

FEKA 3000 /3500/ 3700

SEWAGE PUMPS



VORTEX IMPELLER



Cast iron submersible pumps with vortex impeller for sewage, suitable for foul waste water with solid contents with **80 mm** as maximum diameter. Motor body, hydraulic section and any impeller in cast iron EN G.JL 200.

Double mechanical seals in oil chamber: motor side carbon/alumina, pump side in silicon carbide/silicon carbide. On request : oil chamber with water level detector kit.

Dry type asynchronous sealed motor. Rotor mounted on ball bearings to ensure silent running and long life. Thermal and overcurrent protection are responsibility of the user; on request available already installed in the motor windings.

SEWAGE AND WASTE WATER

Motor protection rating: IP 68

Insulation class: F

Continuous duty with completely immersed pump. Supplied as standard with **10 mt H07RN-F** power cable.

Operating range: from 12 to 90 m³/h with head up to 29 mt.

Liquid quality requirements: Non-aggressive sewage, drain water

Liquid temperature range: From 0° to + 40°.

Maximum immersion depth: 20 mt

Installation: portable, in vertical position.

Free passage: 80 mm.

Comes with: UNI 1092 PN 6 compliant flange.

Lifting device available: see accessories.



ACCESSORIES PAG 499

PANELS PAG 506

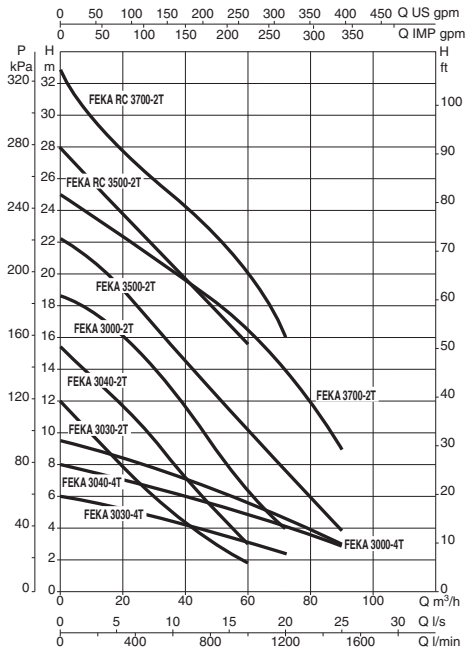
TECHNICAL DATA

MODEL	CODE	ELECTRICAL DATA					HYDRAULIC DATA										
		VOLTAGE 50 HZ	P1 MAX kW	P2 NOMINAL		In A	Q=m ³ h	0	12	18	24	36	48	60	72	90	
				kW	HP			Q=l/min	0	200	300	400	600	800	1000	1200	1500
FEKA 3030.4T	60141727	3X400 V~	2,5	1,8	2,4	5,6	H (m)	6	5,6	5,3	5,1	4,4	3,8	3,1	2,4		
FEKA 3040.4T	60141728	3X400 V~	2,8	2,8	3,7	6,3		8	7,4	7,1	6,8	6,2	5,6	4,9	4,1	2,8	
FEKA 3000.4T	103018090	3X400 V~	4,6	3,1	4,1	9,5		9,5	8,9	8,5	8,1	7,4	6,5	5,6	4,6	3	
FEKA 3030.2T	60141729	3X400 V~	3	2,3	3,1	5,3		12	9,5	8,3	7	5	3,2	1,8			
FEKA 3040.2T	60141730	3X400 V~	3,5	2,9	3,9	6,1		15,4	13,2	12,0	10,8	8	5,4	3			
FEKA 3000.2T	103018010	3X400 V~	5	3,6	4,8	8,8		18,7	17,5	16,4	15,3	12,6	9,4	6,2	4		
FEKA 3500.2T	103018050	3X400 V~	5	4,2	5,6	9,82		22,3	20,4	19,2	17,9	15,2	12,8	10	7,5	3,8	
FEKA 3700.2T	103018060	3X400 V~	6	5,5	7,3	11		25	23,4	22,7	21,9	20,2	18,5	16,5	14	9	
FEKA RC 3500.2T	60141731	3X400 V~	8	4,5	6	13,5		28	25,5	24,3	23	20,6	18	15,6			
FEKA RC 3700.2T	60141732	3X400 V~	10	5,4	7,2	16,2		32,9	29,4	28,1	26,8	24,8	22,8	20,1	16		

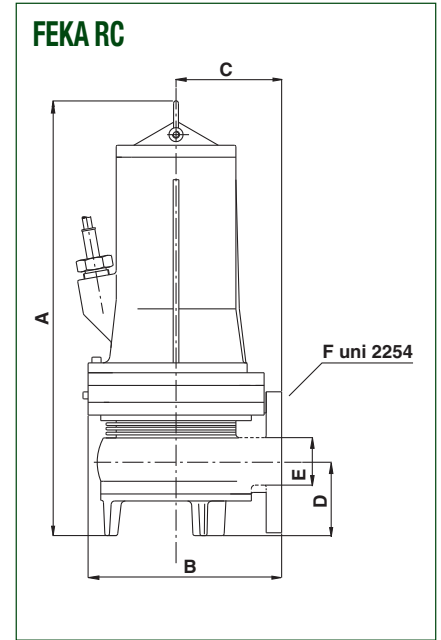
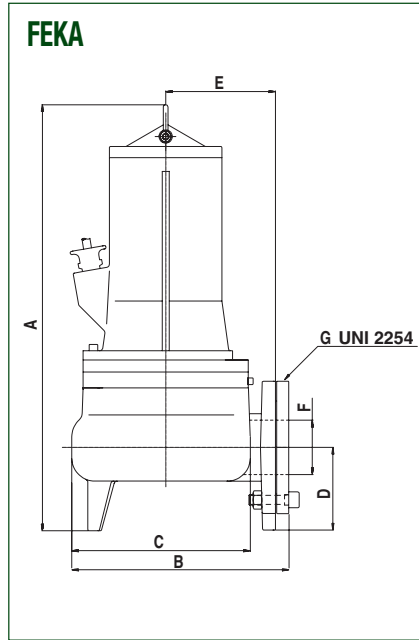
FEKA 3000 /3500/ 3700

SEWAGE PUMPS

FEKA 3000 - 3500 - 3700



DIMENSIONS AND WEIGHTS



MODELLO	A	B	C	D	E	F	G	FREE PASSAGE mm	Q.TY X PALLET	WEIGHT KG
FEKA 3030.4T	620	295	270	125	160	67	Ø 3"	80	8	70
FEKA 3040.4T	620	295	270	125	160	67	Ø 3"	80	8	73
FEKA 3000.4T	620	295	270	125	160	67	Ø 3"	80	8	76
FEKA 3030.2T	620	295	270	125	160	67	Ø 3"	67	8	68
FEKA 3040.2T	620	295	270	125	160	67	Ø 3"	67	8	70
FEKA 3000.2T	620	295	270	125	160	67	Ø 3"	67	8	72
FEKA 3500.2T	620	295	270	125	160	67	Ø 3"	67	8	74
FEKA 3700.2T	620	295	270	125	160	67	Ø 3"	67	8	76
FEKA RC 3500.2T	610	295	145	105	65	DN 80	-	50	8	67
FEKA RC 3700.2T	610	295	145	105	65	DN 80	-	50	8	70

SPECIAL VERSIONS

MODEL	CODE
VERSION WITH THERMAL PROTECTION	on request
VERSION WITH WATER LEVEL DETECTOR	on request