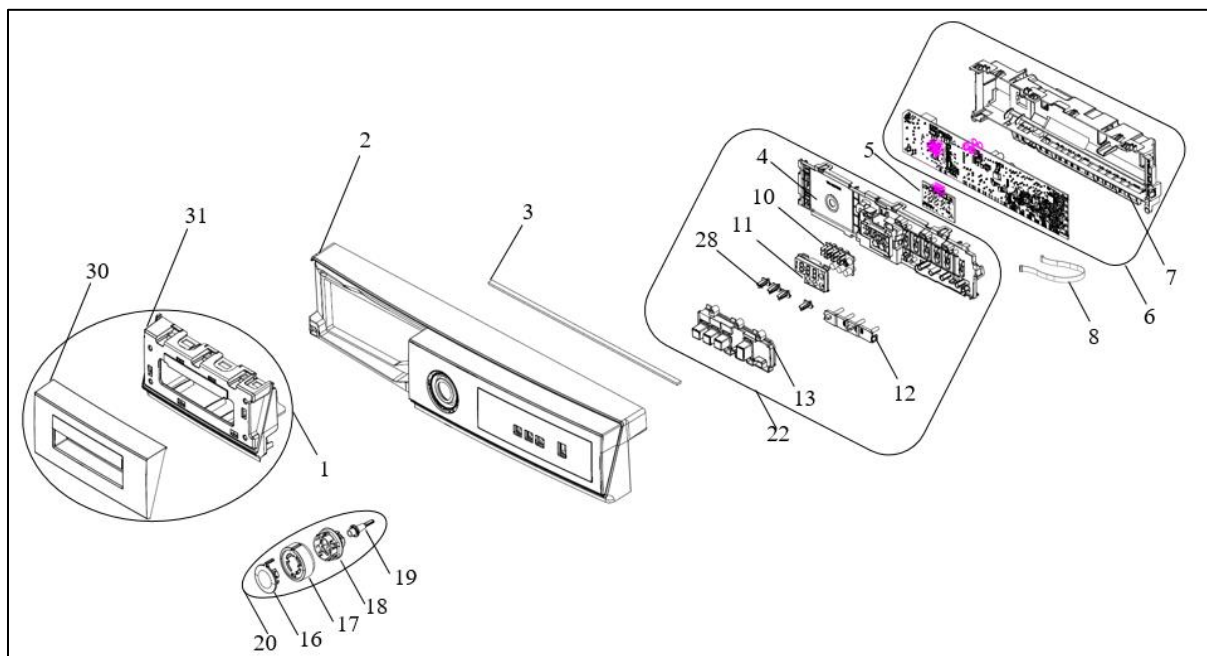


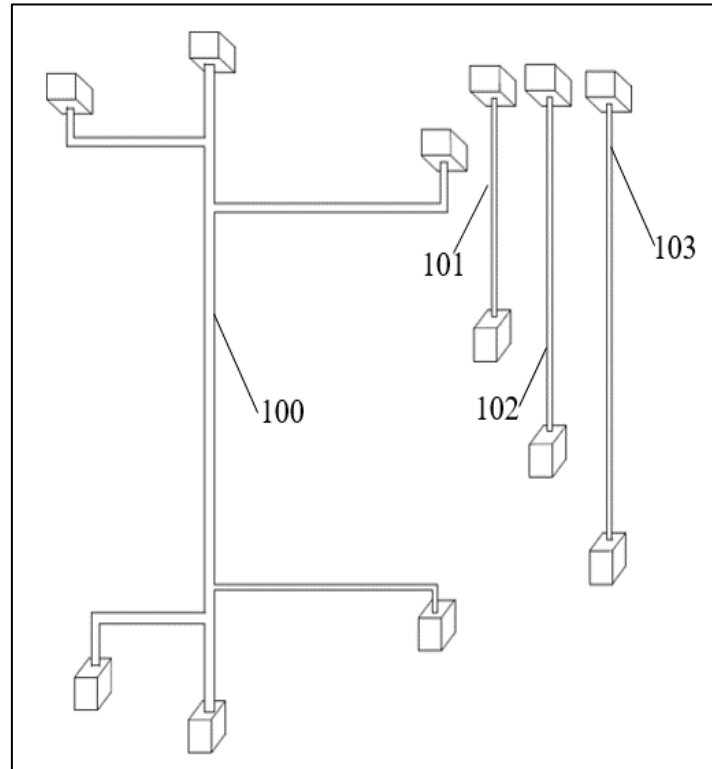
1. CONTROL PANEL PARTS



| NO | PART NAME | QUANTITY |
|----|-----------------------------------|----------|
| 1 | WATER TANK DRAWER COVER GR | 1 |
| 2 | CONTROL PANEL | 1 |
| 3 | CONTROL PANEL ISOLATION | 1 |
| 4 | PCB BOX COVER | 1 |
| 5 | UI CARD | 1 |
| 6 | PCB BOARD GR | 1 |
| 7 | PCB BOX | 1 |
| 8 | UI CONNECTION CABLE | 1 |
| 10 | 1888 LIGHT GUIDE | 1 |
| 11 | 1888 FRONT COVER | 1 |
| 12 | SELECTION BUTTONS LIGHT GUIDE | 1 |
| 13 | SELECTION BUTTONS | 1 |
| 16 | PROGRAM SELECTION KNOB COVER | 1 |
| 17 | PROGRAM SELECTION KNOB BODY | 1 |
| 18 | PROGRAM SELECTION KNOB INS. PART | 1 |
| 19 | PROGRAM SELECTION SHAFT | 1 |
| 20 | PROGRAM SELECTION KNOB | 1 |
| 22 | SELECTION BUTTON GR | 1 |
| 23 | CONTROL PANEL GR (1-2-20-22) | 1 |
| 28 | SELECTION BUTTONS SHAFT | 1 |
| 30 | WATER TANK DRAWER COVER INS. PART | 1 |
| 31 | WATER TANK DRAWER BODY | 1 |

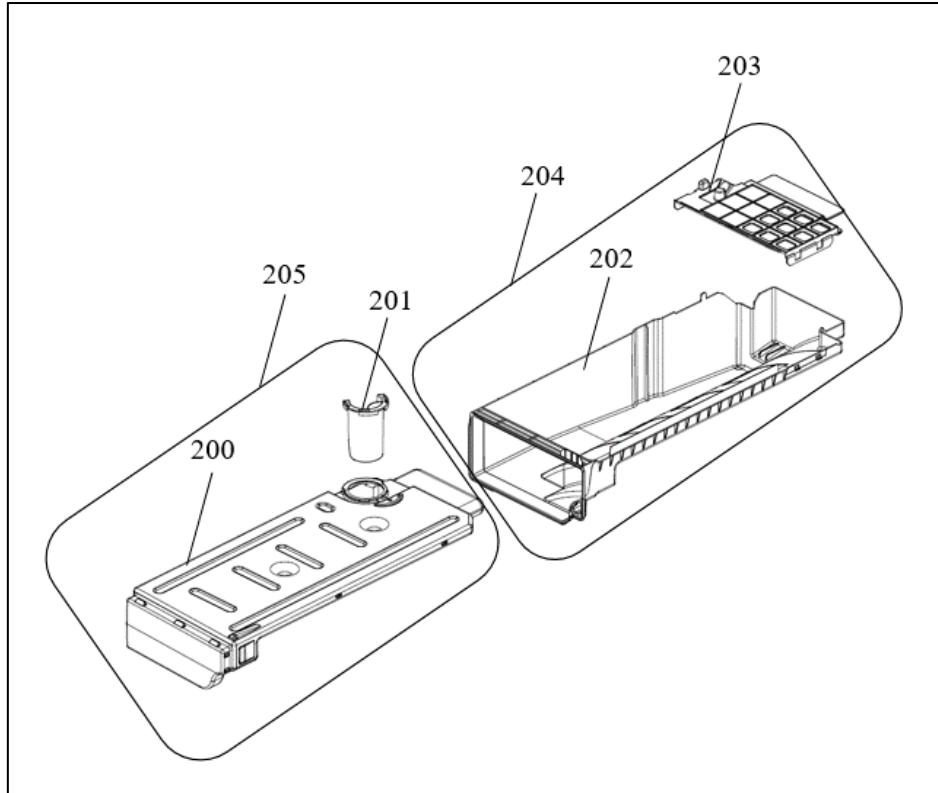
| | | |
|---------------|---------------------------------|-----------------------------|
| VESTEL | CONDENSER T1 MARLA (T20) | CUSTOMER SUPPORT |
| | EXPLODED VIEW | |

2. CABLE GROUP PARTS

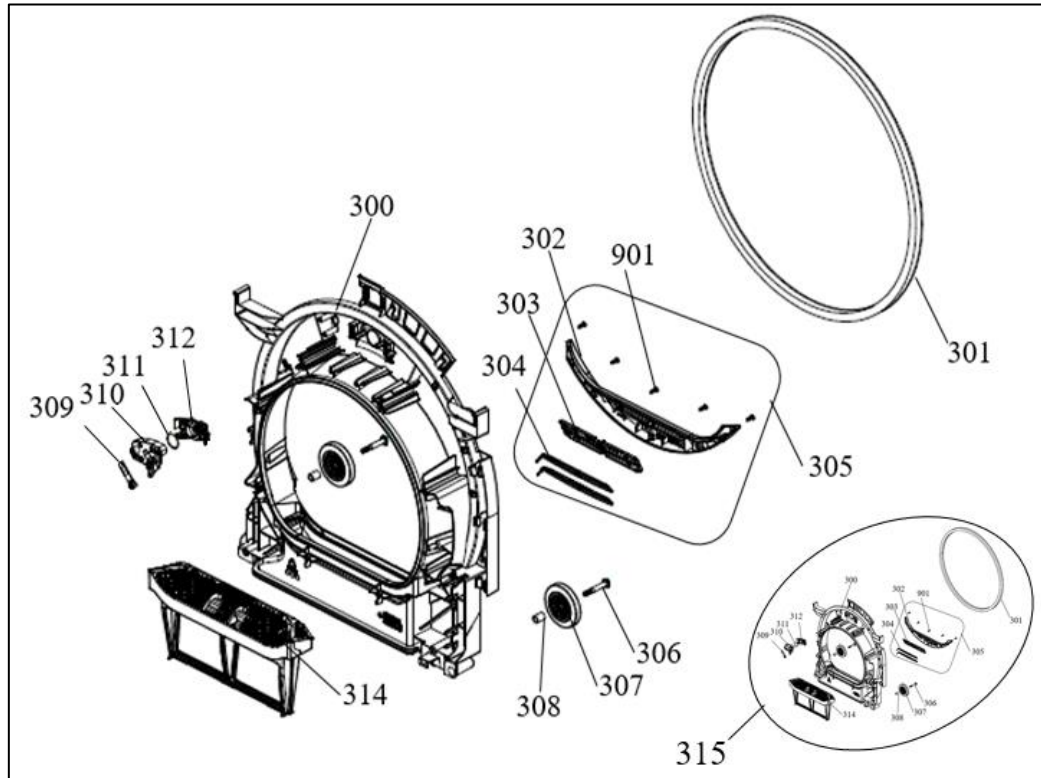


| NO | PART NAME | QUANTITY |
|-----|------------------------|----------|
| 100 | CABLE TREE | 1 |
| 101 | DRUMLIGHT CABLE | 1 |
| 102 | DOOR LATCH CABLE | 1 |
| 103 | HUMMIDITY SENSOR CABLE | 1 |
| 104 | CABLE GR (100-618) | 1 |

3. WATER TANK PARTS



| NO | PART NAME | QUANTITY |
|-----|--------------------------|----------|
| 200 | WATER TANK | 1 |
| 201 | TANK DRAIN COVER | 1 |
| 202 | WATER TANK HOUSING | 1 |
| 203 | WATER TANK HOUSING COVER | 1 |
| 204 | WATER TANK HOUSING GR | 1 |
| 205 | WATER TANK GR | 1 |

4. FRONT SHIELD PARTS


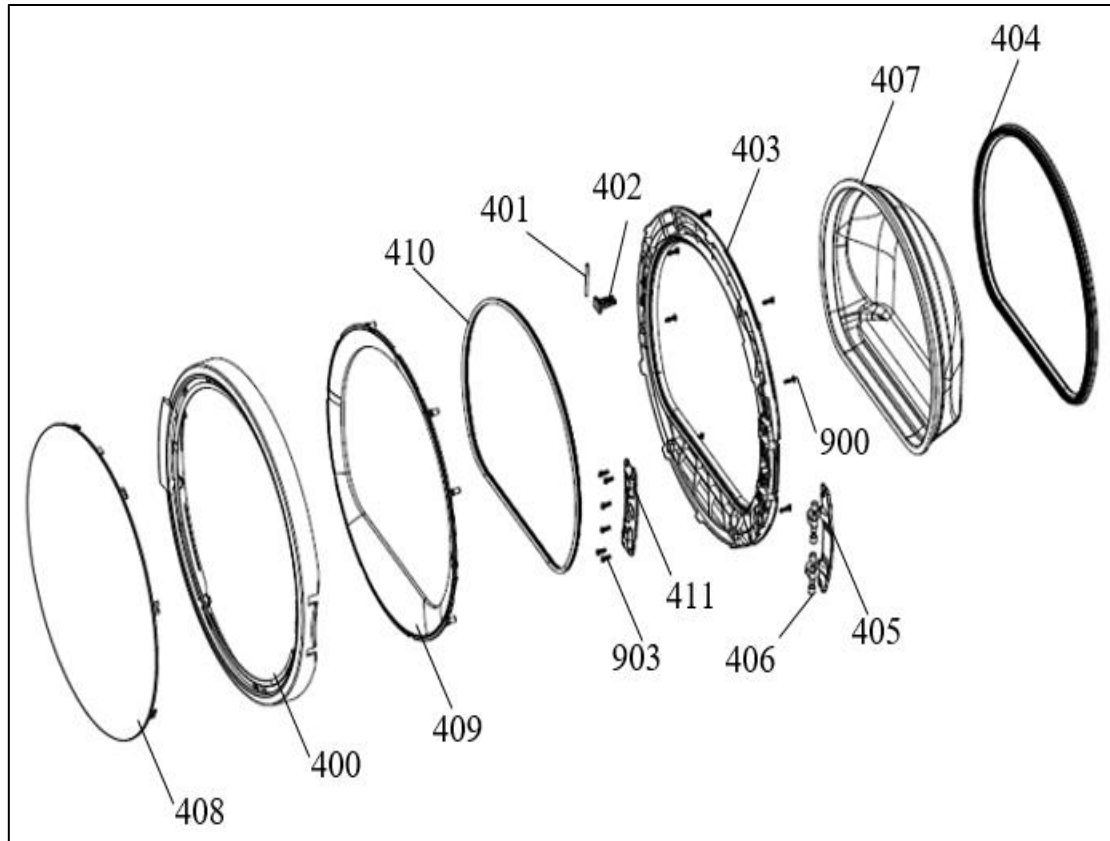
| NO | PART NAME | QUANTITY |
|------|---|----------|
| 300 | FRONT SHIELD | 1 |
| 301 | FRONT ISOLATION FOAM | 1 |
| 302 | HUMMIDITY SENSOR PLASTIC | 1 |
| *303 | SENSOR HOLDER | 1 |
| *304 | SENSOR SHEET | 2 |
| 305 | HUMMIDITY SENSOR GROUP (302-303 -304 - 103) | 1 |
| 306 | WHEEL SCREW | 2 |
| 307 | BEARING WHEEL | 2 |
| 308 | BEARING WHEEL BUSHING | 2 |
| 309 | DRUMLIGHT CARD | 1 |
| 310 | DRUMLIGHT CARD BOX | 1 |
| 311 | DRUMLIGHT CARD GASKET | 1 |
| 312 | DRUMLIGHT COVER | 1 |
| 314 | FILTER | 1 |
| 315 | FRONT SHIELD GROUP | 1 |
| 901 | HUMIDITY SENSOR SCREW | 5 |

*303,304 can order with group code, pos no: 305

| | | |
|---------------|---------------------------------|-----------------------------|
| VESTEL | CONDENSER T1 MARLA (T20) | CUSTOMER SUPPORT |
| | EXPLODED VIEW | |

5. DOOR PARTS

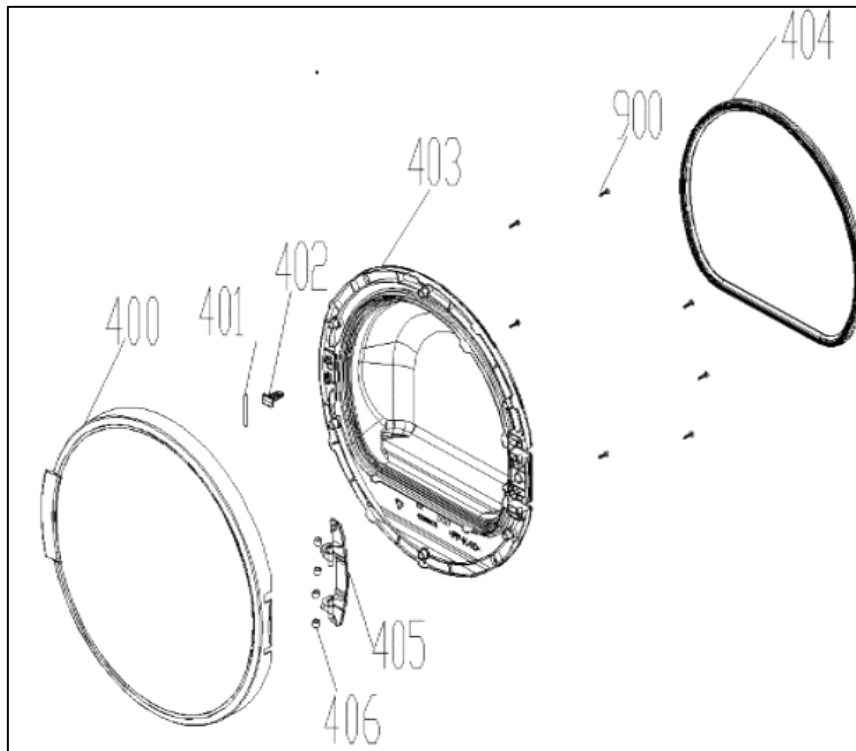
5.1. Glass Door Parts



| NO | PART NAME | QUANTITY |
|-----|-----------------------------|----------|
| 400 | DOOR OUTER PLASTIC | 1 |
| 401 | HINGE PIN | 1 |
| 402 | DOOR HOOK | 1 |
| 403 | INNER DOOR PLASTIC | 1 |
| 404 | DOOR GASKET | 1 |
| 405 | DOOR HINGE | 1 |
| 406 | DOOR HINGE BUSHING | 4 |
| 407 | DOOR GLASS | 1 |
| 408 | DOOR FRONT COVER | 1 |
| 409 | OUTER PLASTIC INNER FRAME | 1 |
| 410 | DOOR GLASS ISOLATION GASKET | 1 |
| 411 | DOOR HINGE SHEET METAL | 1 |
| 412 | DOOR GROUP | 1 |
| 900 | 3.5 X 16 PLASTIC SCREW | 11 |
| 903 | 4 X 12 PLASTIC SCREW | 6 |

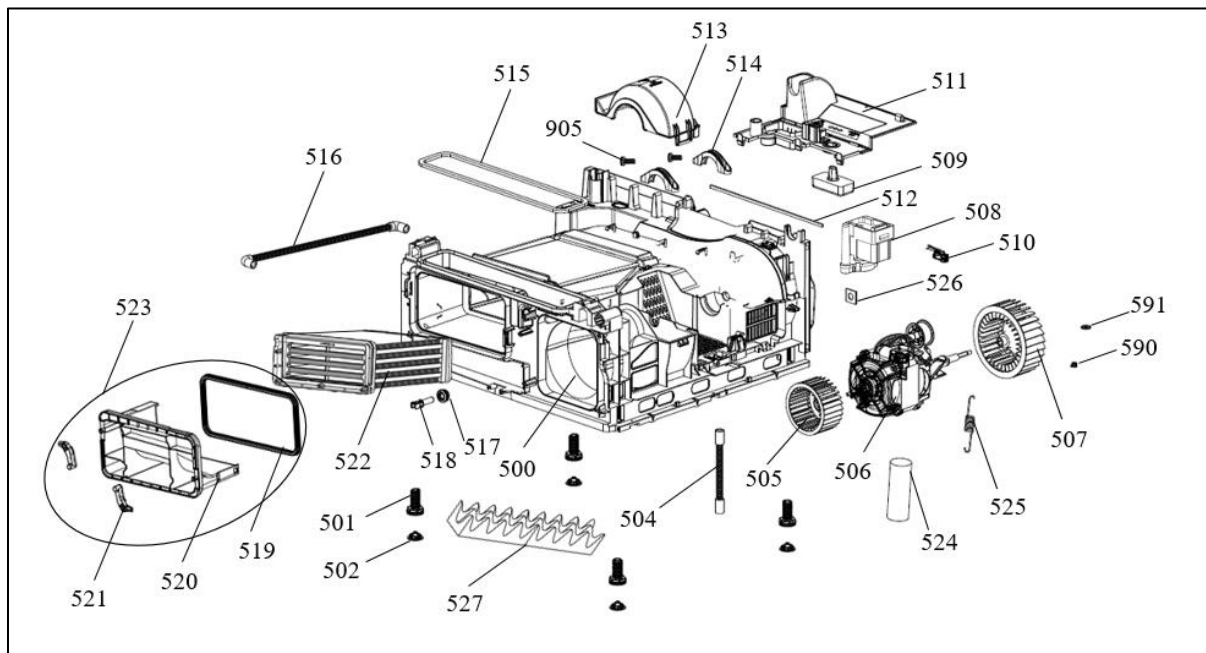
| | | |
|---------------|---------------------------------|-----------------------------|
| VESTEL | CONDENSER T1 MARLA (T20) | CUSTOMER SUPPORT |
| | EXPLODED VIEW | |

5.2. Plastic Door Parts



| NO | PART NAME | QUANTITY |
|-----|------------------------|----------|
| 400 | DOOR OUTER PLASTIC | 1 |
| 401 | HINGE PIN | 1 |
| 402 | DOOR HOOK | 1 |
| 403 | INNER DOOR PLASTIC | 1 |
| 404 | DOOR GASKET | 1 |
| 405 | DOOR HINGE | 1 |
| 406 | DOOR HINGE BUSHING | 4 |
| 900 | 3.5 X 16 PLASTIC SCREW | 7 |

6. BASEMENT PLASTIC PARTS

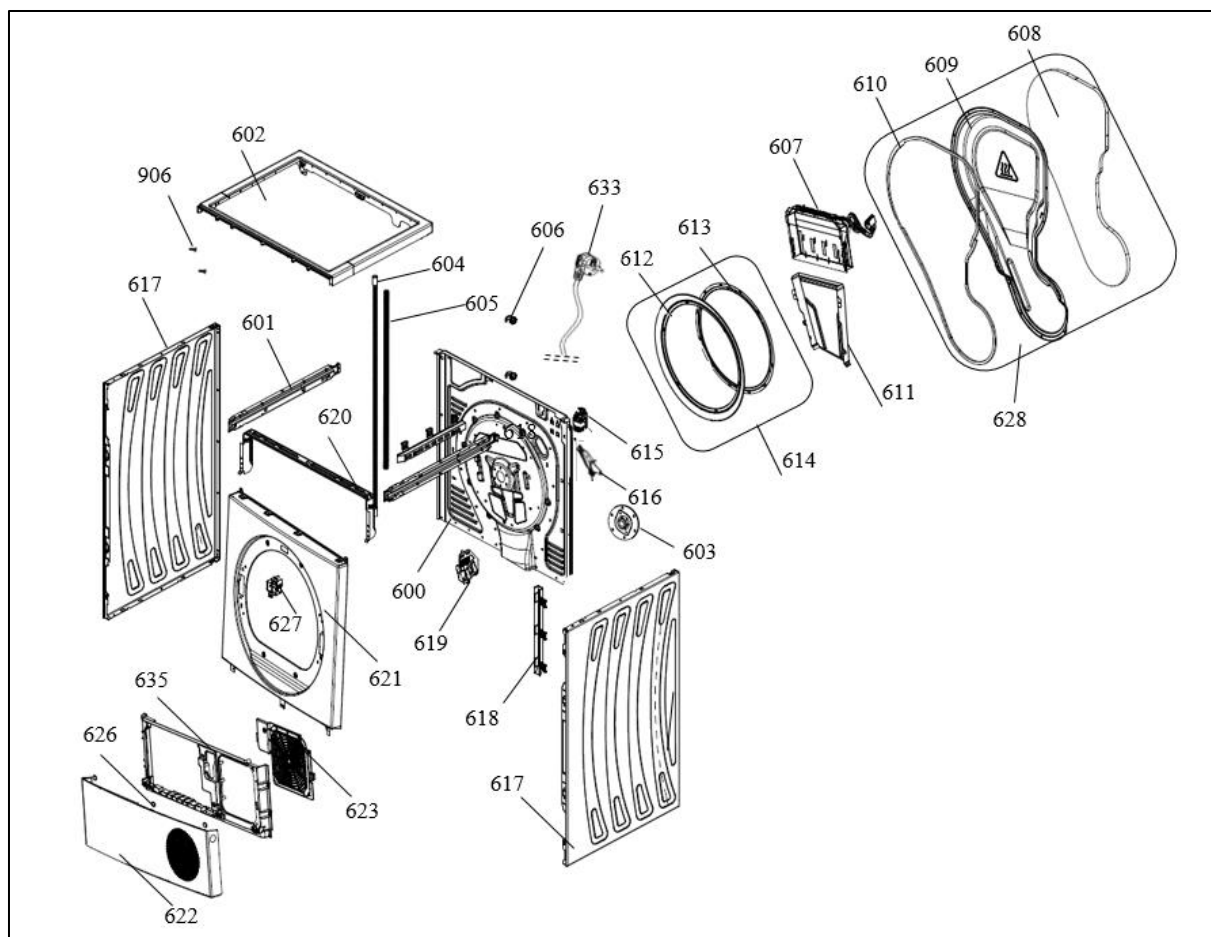


| NO | PART NAME | QUANTITY |
|-----|--------------------------------|----------|
| 500 | BASEMENT PLASTIC GR COND. | 1 |
| 501 | ADJUSTABLE STANDING PLASTIC | 4 |
| 502 | ADJUSTABLE STANDING RUBBER | 4 |
| 504 | RETURN HOSE | 1 |
| 505 | COOLING FAN | 1 |
| 506 | MOTOR | 1 |
| 507 | PROCESS FAN | 1 |
| 590 | PROCESS AIR FAN NUT | 1 |
| 591 | PROCESS AIR FAN WASHER | 1 |
| 508 | PUMP | 1 |
| 509 | FLOAT | 1 |
| 510 | AQUA SWITCH | 1 |
| 511 | PUMP HOUSING | 1 |
| 512 | REAR PANEL ISOLATION FOAM | 1 |
| 513 | COOLING FAN COVER | 1 |
| 514 | MOTOR FIXING PLASTIC | 1 |
| 905 | MOTOR FIXING SCREW, P,TSB,5X20 | 4 |
| 515 | AIR CHANNEL SEAL | 1 |
| 516 | SIDE HOSE | 1 |
| 517 | NTC RUBBER | 1 |
| 518 | NTC | 1 |

| | | |
|---------------|---------------------------------|-----------------------------|
| VESTEL | CONDENSER T1 MARLA (T20) | CUSTOMER SUPPORT |
| | EXPLODED VIEW | |

| | | |
|-----|-------------------------------------|---|
| 519 | CONDENSER DRAWER COVER GASKET | 1 |
| 520 | CONDENSER DRAWER COVER | 1 |
| 521 | CONDENSER DRAWER COVER LOCK PLASTIC | 2 |
| 522 | CONDENSER BOX | 1 |
| 523 | CONDENSER DRAWER COVER GR | 1 |
| 524 | CAPACITOR (11uF) | 1 |
| 525 | MOTOR SPRING | 1 |
| 526 | MOTOR ISOLATION FELT | 1 |
| 527 | SOUND ISOLATION FOAM | 1 |

7. BODY PARTS



| NO | PART NAME | QUANTITY |
|-----|---|----------|
| 600 | REAR PANEL | 1 |
| 601 | SIDE BRACKET | 2 |
| 602 | UPPER TRAY | 1 |
| 906 | UPPER TRAY SCREW, S, TTB,4.8x9.5,C,ST,A3B | 2 |
| 603 | REAR BEARING GR | 1 |
| 604 | WATER TANK HOSE | 1 |
| 605 | WATER TANK RETURN HOSE | 1 |
| 606 | HOSE HOLDER PLASTIC | 2 |
| 607 | HEATER | 1 |
| 608 | REAR COVER OUTER ISOLATION | 1 |
| 609 | REAR COVER PLASTIC | 1 |
| 610 | REAR COVER INNER SEAL | 1 |
| 611 | AIR GUIDE BRACKET | 1 |
| 612 | REAR ISOLATION (SEAL&FELT) | 1 |

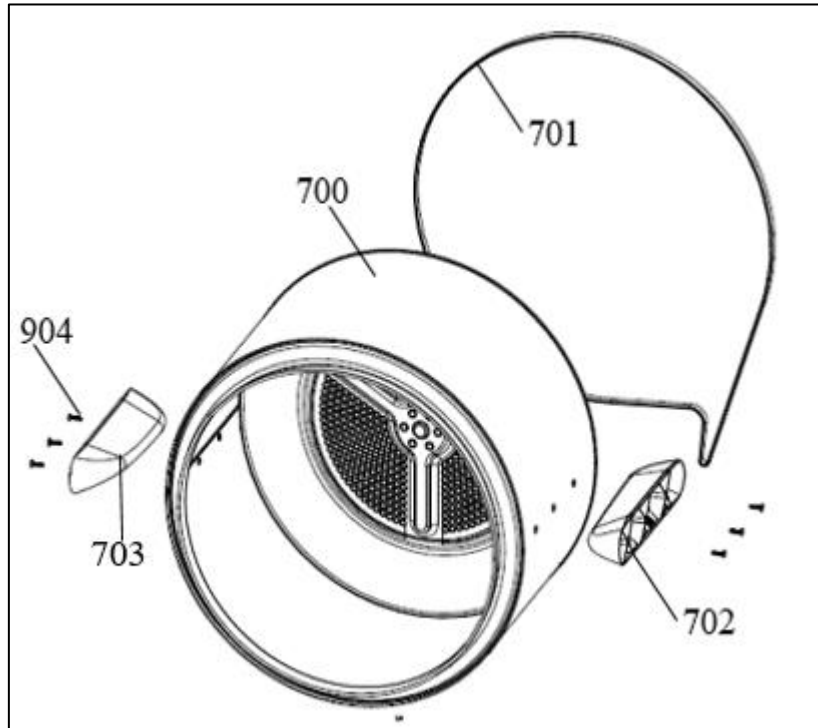
| | | |
|---------------|---------------------------------|-----------------------------|
| VESTEL | CONDENSER T1 MARLA (T20) | CUSTOMER SUPPORT |
| | EXPLODED VIEW | |

| | | |
|-----|-------------------------------------|---|
| 613 | REAR ISOLATION SHEET | 1 |
| 614 | REAR ISOLATION GROUP | 1 |
| 615 | EMI FILTER | 1 |
| 616 | HEATER CABLE GUIDE PLASTIC | 1 |
| 617 | SIDE PANEL | 2 |
| 618 | CABLE HOLDER PLASTIC | 1 |
| 620 | TOP BRACKET | 1 |
| 621 | FRONT PANEL | 1 |
| 622 | PLINTH | 1 |
| 623 | PLINTH FAN COVER | 1 |
| 635 | PLINTH INNER BODY | 1 |
| 626 | PLINTH MAGNET | 1 |
| 627 | DOOR LATCH | 1 |
| 628 | REAR COVER GR (608-609-610) | 1 |
| 629 | REAR PANEL GR (600-614-603-615-606) | 1 |
| 630 | FRONT PANEL GR (621-627) | 1 |
| 633 | SUPPLY CORD | 1 |

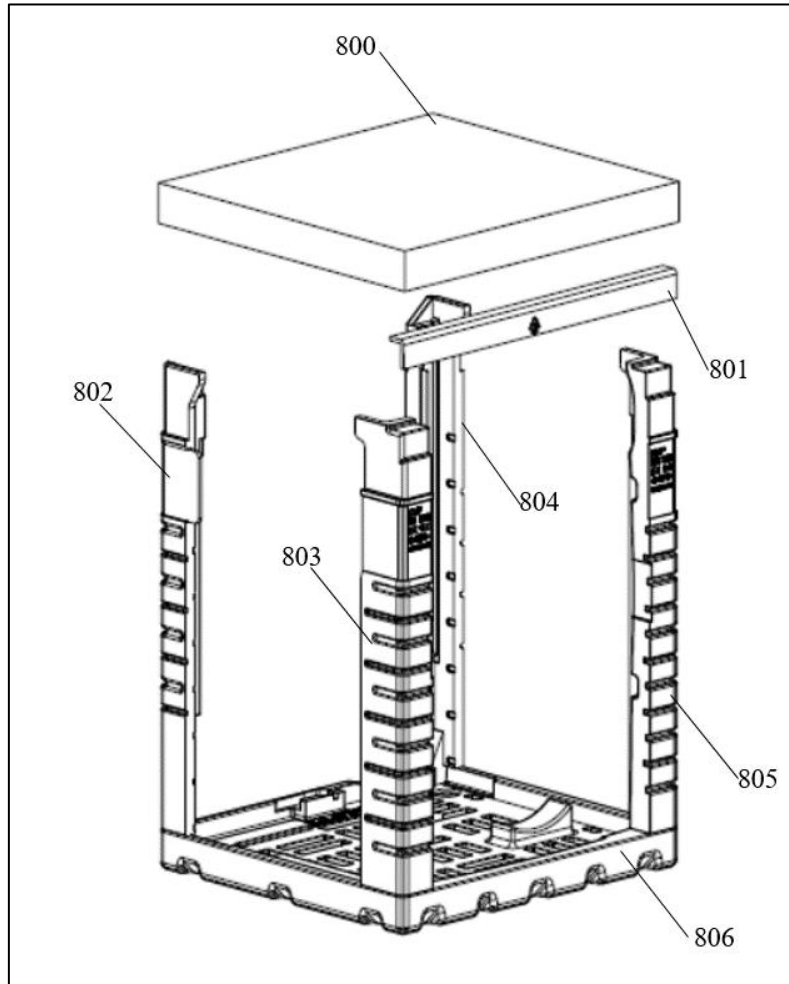
*609 can order with group code, pos no: 628

| | | |
|---------------|---------------------------------|-----------------------------|
| VESTEL | CONDENSER T1 MARLA (T20) | CUSTOMER SUPPORT |
| | EXPLODED VIEW | |

8. DRUM PARTS



| NO | PART NAME | QUANTITY |
|-----|---------------------------|----------|
| 700 | DRUM GR (700-702-703-904) | 1 |
| 701 | BELT | 1 |
| 702 | PLASTIC LIFTER 1 | 1 |
| 703 | PLASTIC LIFTER 2 | 1 |
| 904 | 5 X 20 PLASTIC SCREW | 6 |

9. PACKING GROUP PARTS

| NO | PART NAME | QUANTITY |
|-----|-----------------------|----------|
| 800 | TOP CARTON | 1 |
| 801 | CORNER HARDBOARD | 1 |
| 802 | REAR LEFT STYROFOAM | 1 |
| 803 | FRONT LEFT STYROFOAM | 1 |
| 804 | REAR RIGHT STYROFOAM | 1 |
| 805 | FRONT RIGHT STYROFOAM | 1 |
| 806 | BOTTOM STYROFOAM | 1 |