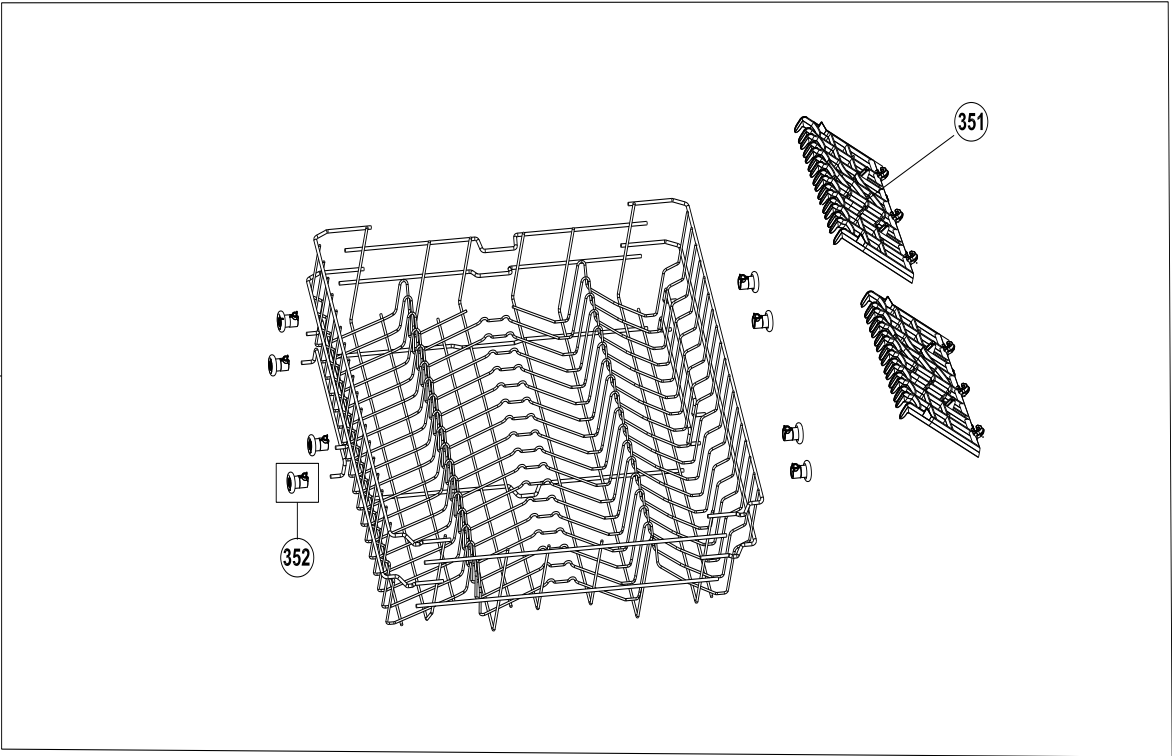
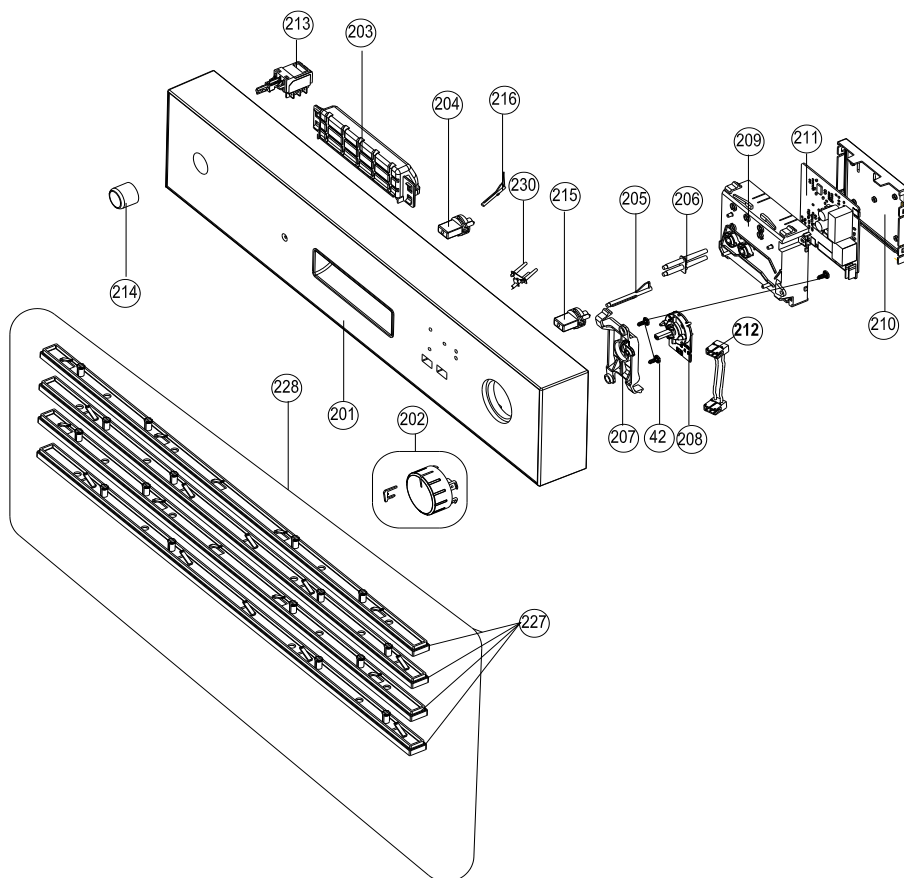


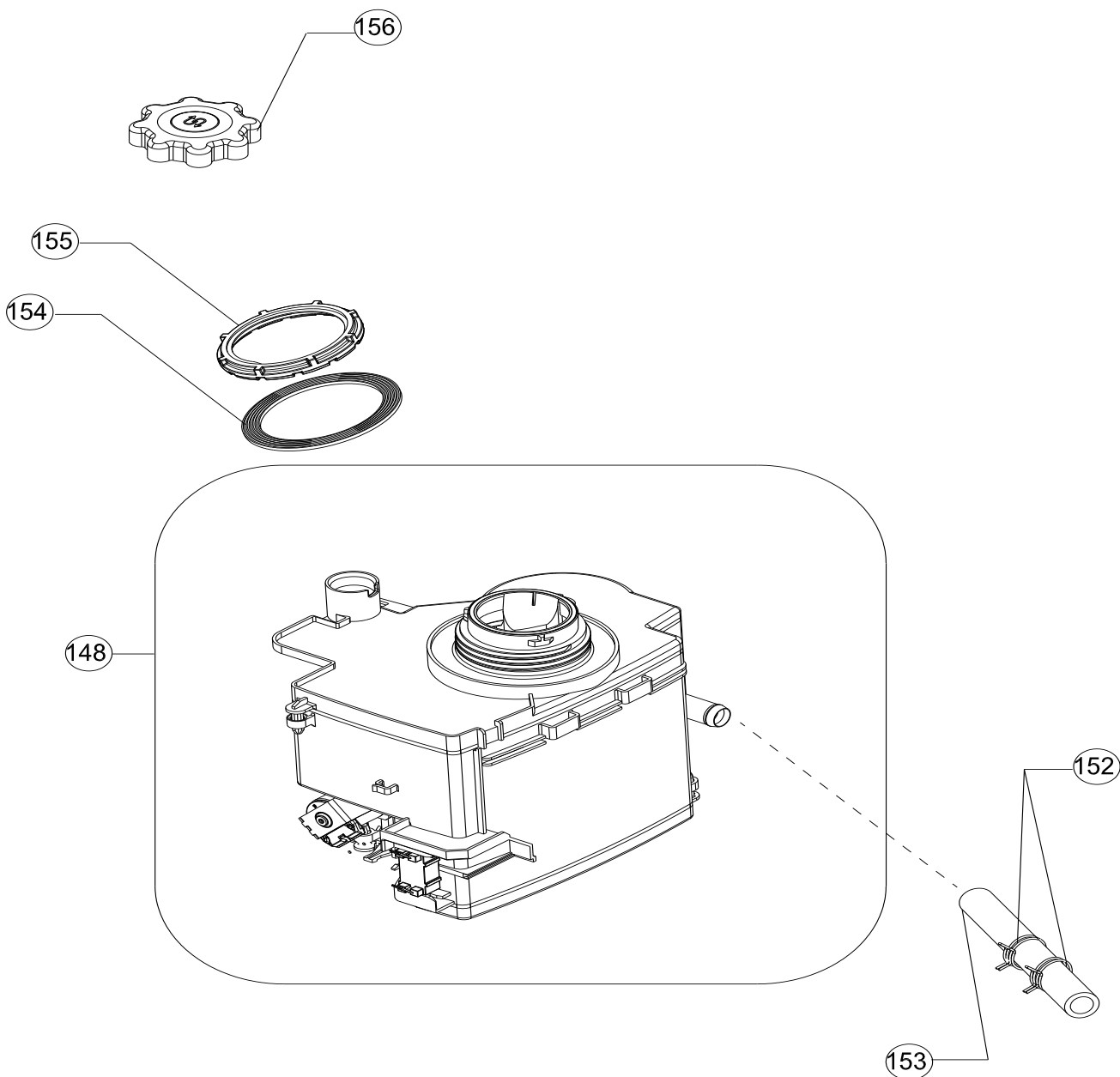
NO	PART NAME
300	LOWER BASKET GROUP - FIXED COMB - ( 301 )
301	LOWER BASKET WHEEL GROUP
325	PLASTIC SET BASKET ( 326-327-328 )
326	PLASTIC BASKET HANDLE
327	PLASTIC BASKET COVER
328	PLASTIC BASKET



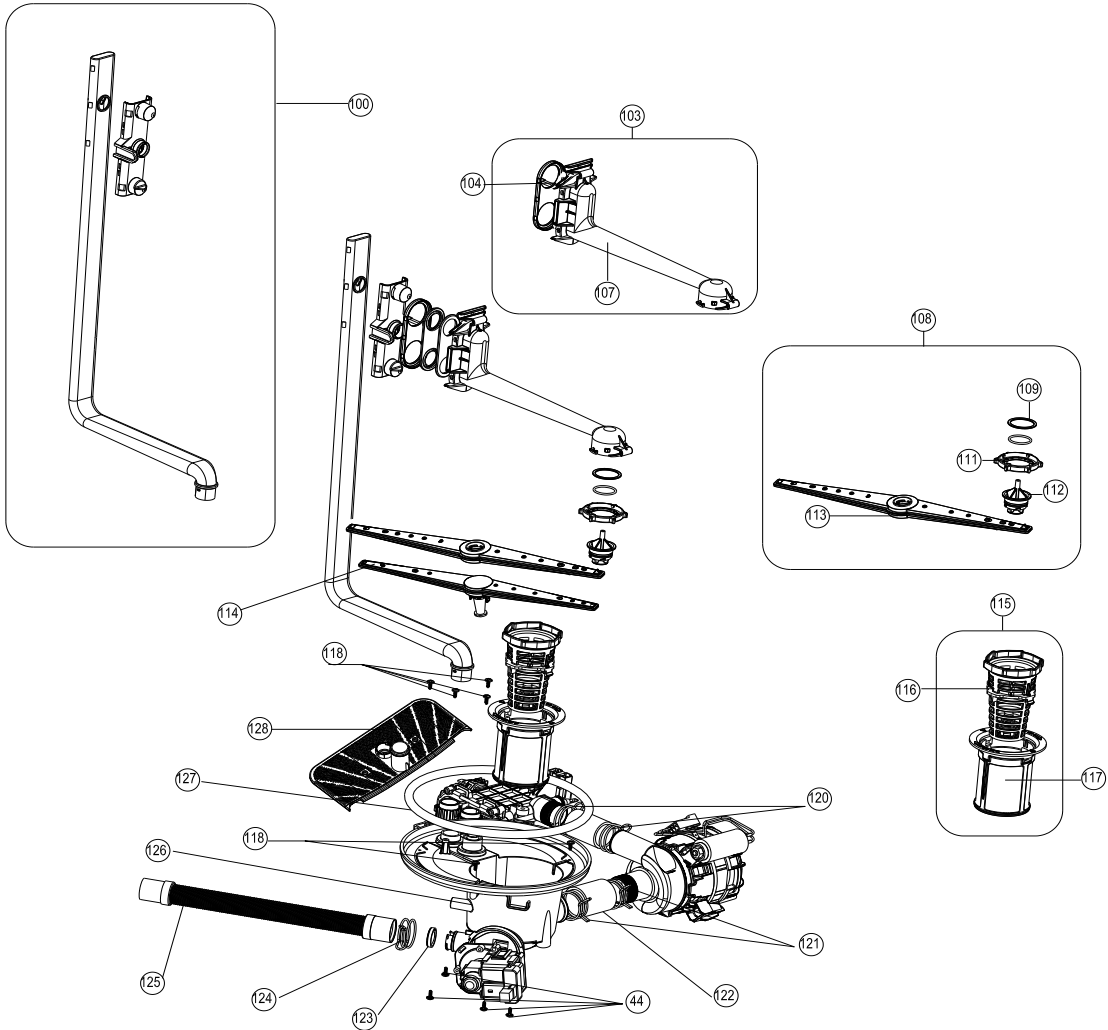
NO	PART NAME
350	UPPER BASKET GR. (351-352-356-357 )
351	MUG SHELVES
352	UPPER BASKET WHELL GROUP



NO	PART NAME
200	CON.PAN.GROUP ( 201-202-203-204-205-206-207-208-209-210-42 )
201	CON.PAN.PRINTED
202	KNOB GR
203	HANDLE
204	ELECTRONIC BUTTON-1
215	ELEKTRONIC BUTTON -2
205	ELECTRON IC BUTTON SHAFT-1
216	ELECTRONIC BUTTON SHAFT-2
206	LIGHT GUIDE-2
230	LIGHT GUIDE-4
207	ROTARY SWITCH CONNECTION PLS.
208	ROTARY SWITCH
209	PCB BOX-1 BODY
210	PCB BOX-1 REAR COVER
211	ELECT.CARD
212	ROTARY SWITCH CABLE
213	ON/OFF SWITCH
214	ON/OFF BUTTON
42	SCREW PT3,5X9 YSB
228	FRONT ESTHETICS LATH GROUP ( 227 )
227	FRONT ESTHETICS LATH



NO	PART NAME
148	WATER SOFTENER GR.WITH REED RELAY
152	CLAMP Dmax19,6X8,8
153	HOSE D12*3*160
154	WATER SOFTENER NUT GASKET
155	WATER SOFTENER NUT
156	SALT CAP GROUP (MAGNETIC VERSION)



NO	PART NAME
100	UPPER SPRAY ARM FEEDING CANAL-L
103	UPPER SPRAY ARM SUPPORT GROUP ( 104-107 )
104	UPPER SPRAY ARM ADAPTER COVER
107	UPPER SPRAY ARM SUPPORT
108	UPPER SPRAY ARM GROUP(113-112-111-110-109)
109	UPPER SPRAY ARM NUT PLASTIC
111	UPPER SPRAY ARM NUT
112	UPPER SPRAY ARM SHAFT
113	UPPER SPRAY ARM

NO	PART NAME
114	LOWER SPRAY ARM
115	MICROFILTER GROUP ( 116-117 )
116	COURSE FILTER
117	MICROFILTER
118	SCREW PT4X12 YSB INOX
120	CLAMP Dmax36,4X14
121	CLAMP Dmax41X14,8
122	HOSE D33X3
123	KLAPE
124	CLAMP Dmax29,4X11,4)
125	DRAIN HOSE 200 CM
126	SUMP
127	SUMP SEAL
128	SPRAY ARM SUPPORT
44	SCREWPT4X12YSB

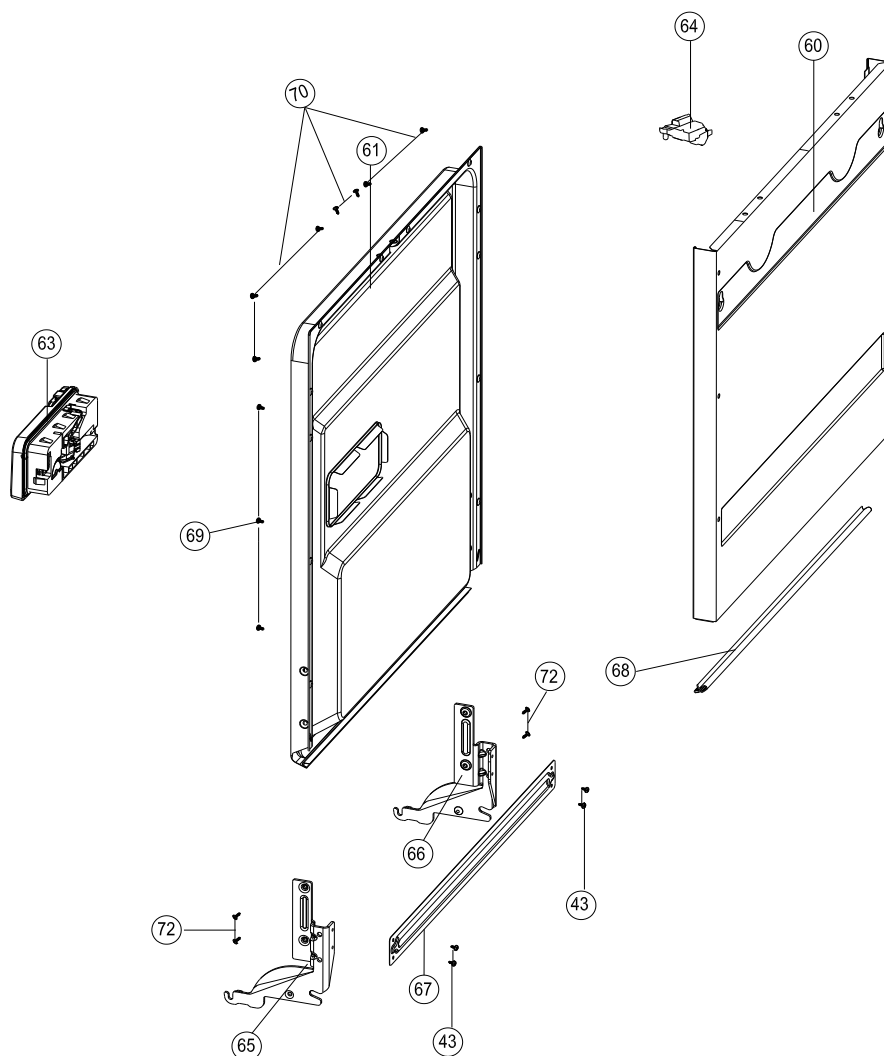
# VESTEL

WHITE GOODS

VESTEL DISWASHER MACH .

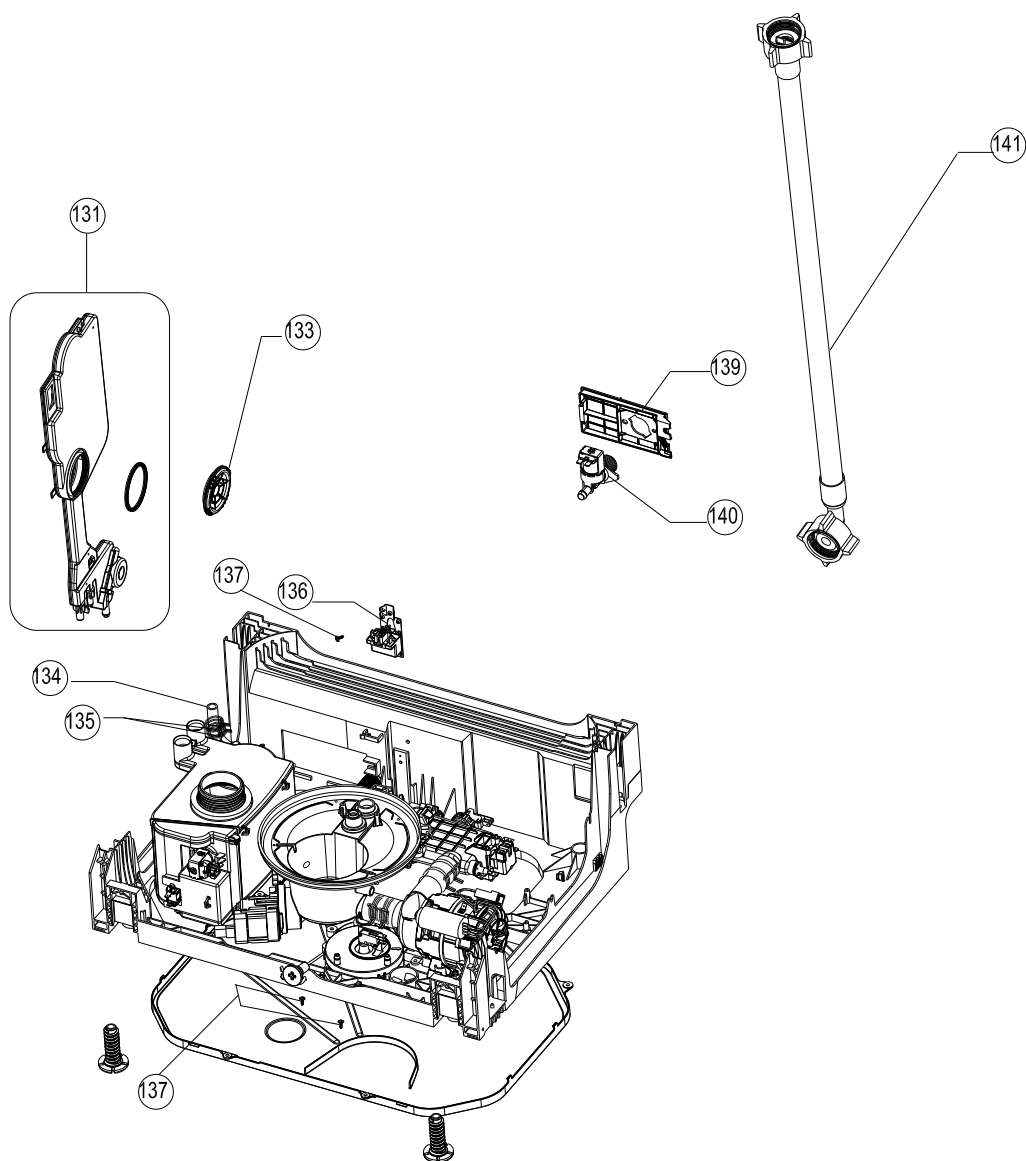
DOOR GROUP

CUSTOMER  
SUPPORT



NO	PART NAME
60	FRONT PANEL-7(A527)PR
61	INNER DOOR ASSEMBLY
63	DISPANSER
64	DOOR LOCK
65	HINGE MOVEMENT SHEETIRON LEFT
66	HINGE MOVEMENT SHEETIRON RIGHT
67	TWISTED SHEETIRON
68	DOOR SEAL
69	SCREW ST 3,9X12 FLAT HEAD INOX
70	SCREW PT4X14 FLAT HEAD INOX
72	SCREW M5X10 TORK HEAD (S)
43	SCREW M4X9 PAN HEAD (S)
44	SCREW PT 4X12 PAN HEAD COLLAR CROSS

JUNE 2015



NO	PART NAME
131	AIR BREAK GROUP
133	AIR BREAK NUT
134	HOSE D10*3*230 PVC/WITH CORD
135	CLAMP Dmax16,8x8,4
136	PARASITE FILTE
137	SCREW PT3X9 YSB
139	BASEMENT HOSE.CON.PLS.
140	WATER INLET VALVE
141	WATER INLET HOSE GROUP



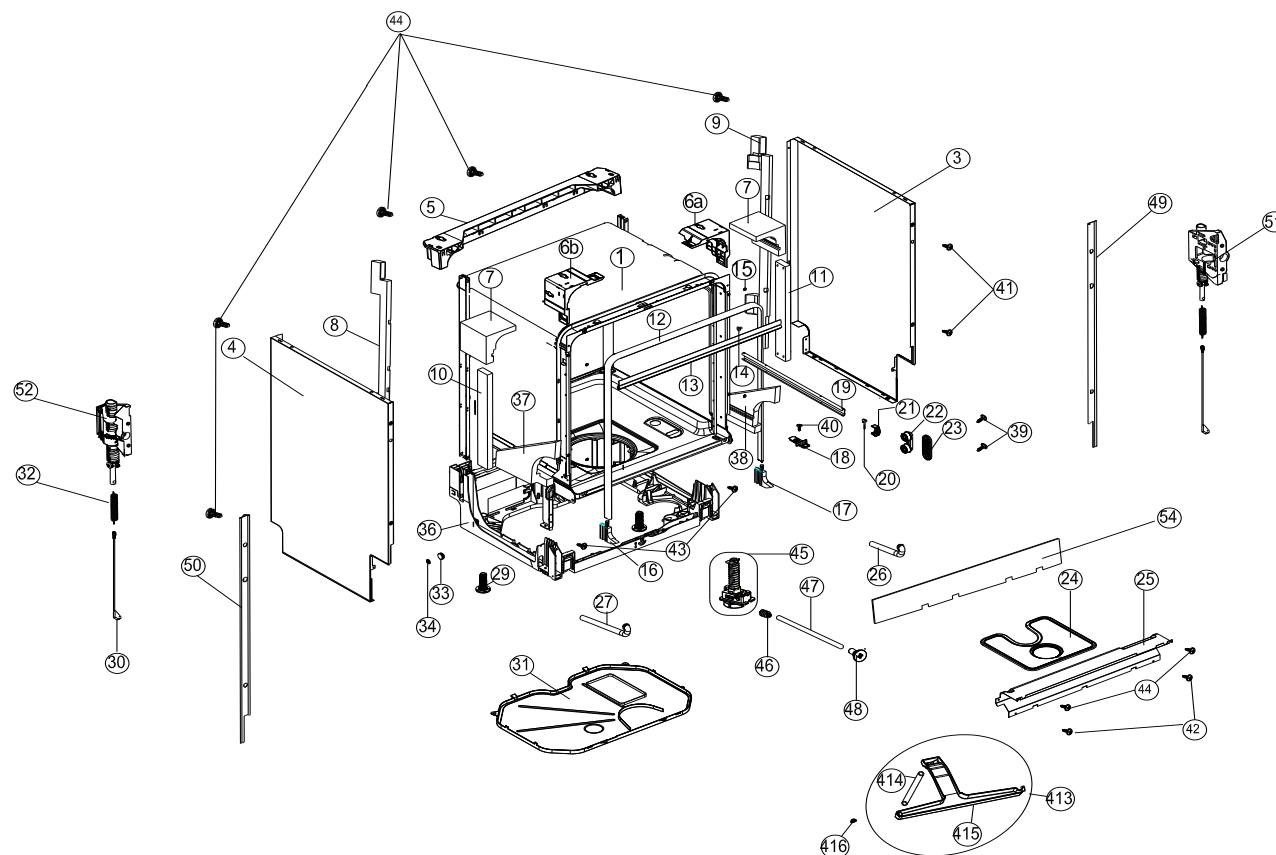
# VESTEL

WHITE GOODS

VESTEL DISWASHER MACH .

TUBE ASSEMBLY GROUP

CUSTOMER  
SUPPORT



NO	PART NAME
1	TUBE ASSEMBLY
3	SIDE PANEL SHEETIRON-RIGHT
4	SIDE PANEL SHEETIRON-LEFT

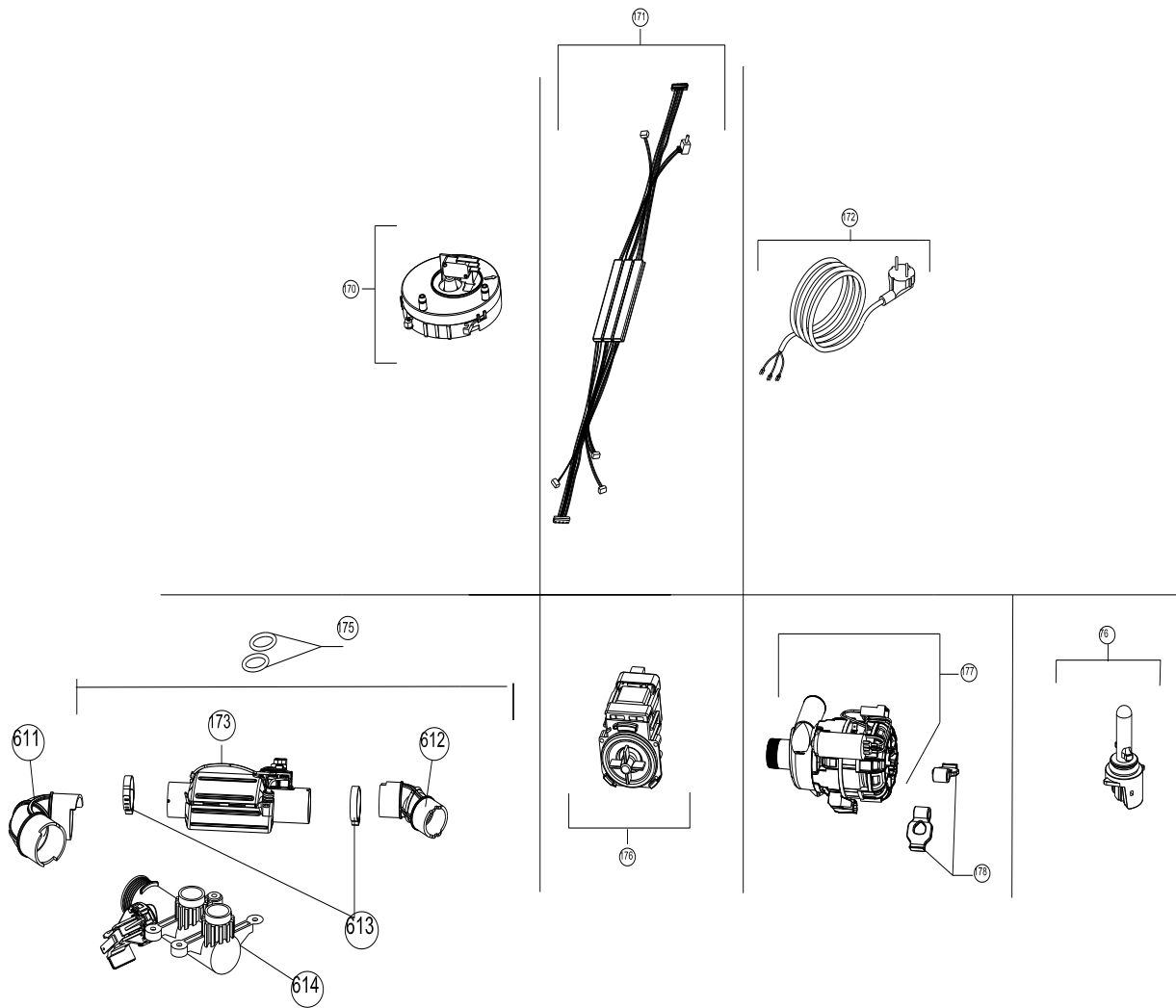
**NOTE-1:** The spare part with poz no 14 is not valid from 06.2011

**NOTE-2:** The spare part with poz no 16 and17 is not valid from29.05.2012

**NOTE-3:** The spare part with poz no 15 is not valid from 09.07.2012

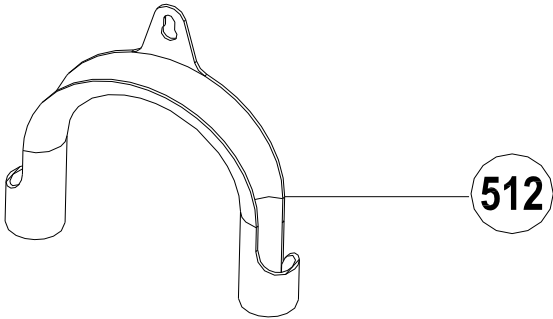
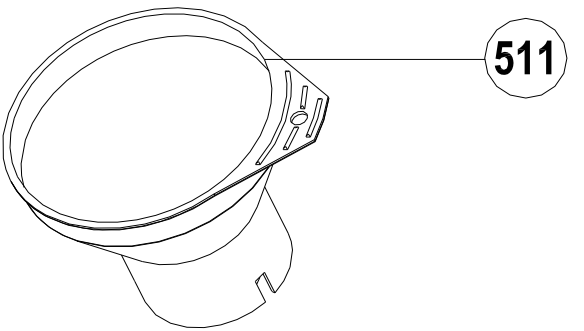
5	REAR UPPER PLS.CROSS BAR
6a	UPPER TRAY SUPPORT PART-RIGHT
6b	UPPER TRAY SUPPORT PART-LEFT
7	TUB TOP CORNER STYROFOAM
8	BACK CROSS BAR STYROFOAM-LEFT
9	BACK CROSS BAR STYROFOAM-RIGHT
10	FRONT CROSS BAR STYROFOAM-LEFT
11	FRONT CROSS BAR STYROFOAM-RIGHT
12	TUB GASKET
13	TOB TUB GASKET
14	TUB HOLE PLUG
15	SIDE PANEL FRONT CROSS BAR SCREW CUPS
16	BOTTOM CORNER GASKET-LEFT
17	BOTTOM CORNER GASKET-RIGHT
18	LATCH DOOR
19	UPPER BASKET RAIL
20	UPPER BASKET STOPPER-REAR
21	UPPER BASKET RAIL LOCK-FRONT
22	UPPER BASKET RAIL CON.BRA.GROUP
23	UPPER BASKET RAIL CON.BRA.GROUP
24	METAL/PLASTIC FILTER
25	KICK PLATE SHEETIRON
26	OVERFLOW PIECE FROM TUB WITH HOSE/300MM
27	OVERFLOW PIECE FROM TUB WITH HOSE/450MM
29	ADJUSTED FOOT
30	HINGE CORD GROUP
31	LOWER COVER
32	HINGE SPRING
33	HINGE PULLEY
34	FIXED PULLEYC SEG. (THE SPARE PART WITH POZ NO 34 IS NOT VALID FROM 01.04.2013)
36	BASEMENT
37	TUB LOWER CORNER STYFROFOAM-LEFT
38	TUB LOWER CORNER STYFROFOAM-RIGHT
39	SCREW DPT5X20 WN 5451 COLLAR CROSS
40	SCREW M4X6 SB
41	SCREW SAC 3,9X7,5 Y
42	SCREW PT3,5X9YSB(F.LI VE T.)
44	SCREW PT4X12 YSB (F.LI
45	BUILT IN ADJUSTMENT MECHANISM
46	BUILT IN WORM GEAR
47	BUILT IN HEIGHT MEC.AXLE
48	BUILT IN ADJUSTMENT MEC.FRONT COVER
49	TUB BORDER GASKET-RIGHT
50	TUB BORDER GASKET-LEFT
51	BUILT IN HINGE SPRING ADJUSTMENT GR.RIGHT
52	BUILT IN HINGE SPRING ADJUSTMENT GR.RIGHT
54	BASEMENT FRONT COVER
413	OVERFLOW PLS GR
414	OVERFLOW PLASTIC HOSE/PVC/UNSTRUNG
415	OVERFLOW PLASTIC
416	BOTTOM TUB OVERFLOW GASKET

**NOTE-4: Pos numbers 26 and 27 which parts are removed from the production 11/07/2014. Instead 413,414,415 and 416 exposure the pieces are used.**



NO	PART NAME
170	FLOATER
171	CABLE HARNESS
172	POWER CABLE 180cm/WHITE
173	HEATER FLOW THROUGH
175	HEATER CASING O-RING
176	DRAIN PUMP
177	WASHING PUMP
178	WASHING PUMP VINE SUPPORT
76	NTC/SLIM
611	HOSE HEATER-ECO
612	HOSE PUMP-HEATER
613	HOSE HANDCUFFS/FLOW THROUGH
614	ECO GR/FT

<b>VESTEL</b> WHITE GOODS	<b>VESTEL DISWASHER MACH .</b>	<b>CUSTOMER SUPPORT</b>
	<b>OPTIONAL PARTS</b>	



NO	PART NAME
511	SALT FUNNEL
512	DRAIN HOSE COAT RACK

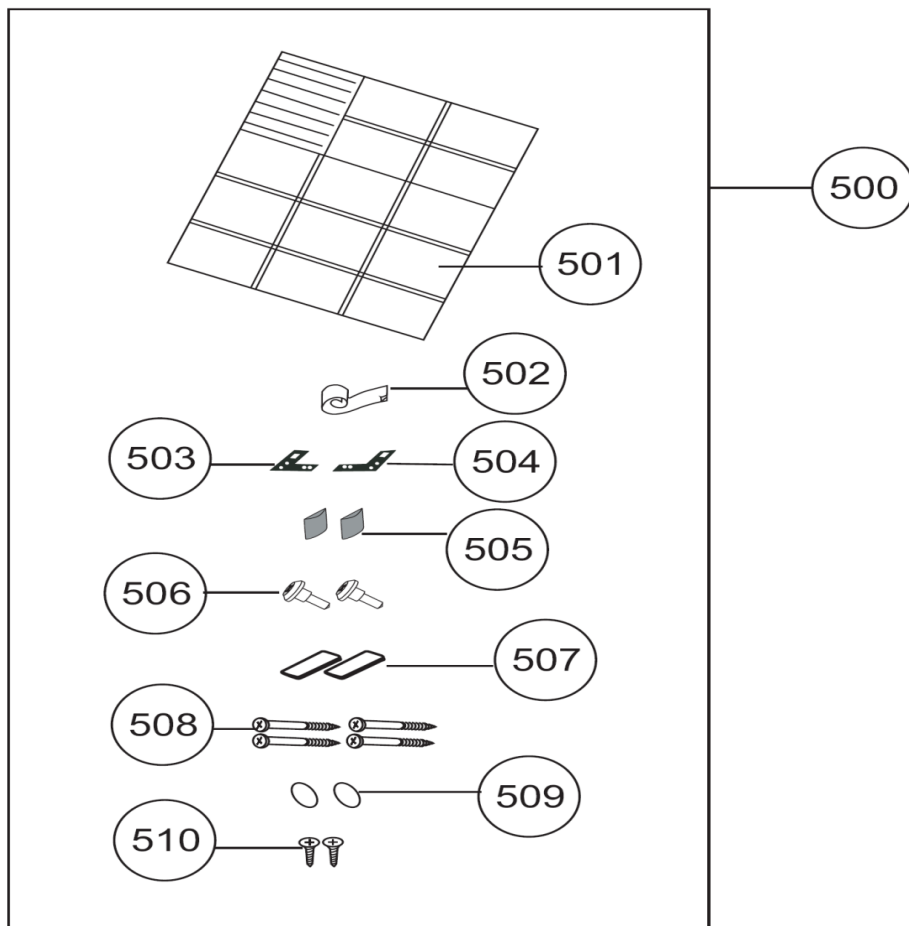
# VESTEL

WHITE GOODS

VESTEL DISWASHER MACH .

ASSEMBLY KIT

CUSTOMER  
SUPPORT



NO	PART NAME
500	INTEGRATED TOOL GR501-502-503-504-505-506-507-508-509-510)
501	FITTING PLAN
502	STEAM HOLDER FOLYO
503	FITTING S.IRON FOR BENCH-LEFT/COVERING
504	FITTING S.IRON FOR BENCH-RIGHT/COVERING
505	SIDE STOPPER STICKER
506	FITTING SCREW FOR WOOD
507	WOOD STOPPER STICKER
508	SCREW 4X42,5 YHB
509	SPRING ADJ.MEC.HOLE FLAP
510	SCREW 4X15 YHB

JUNE 2015