

# HÆGER

Product: CHEST FREEZER

Catalog:

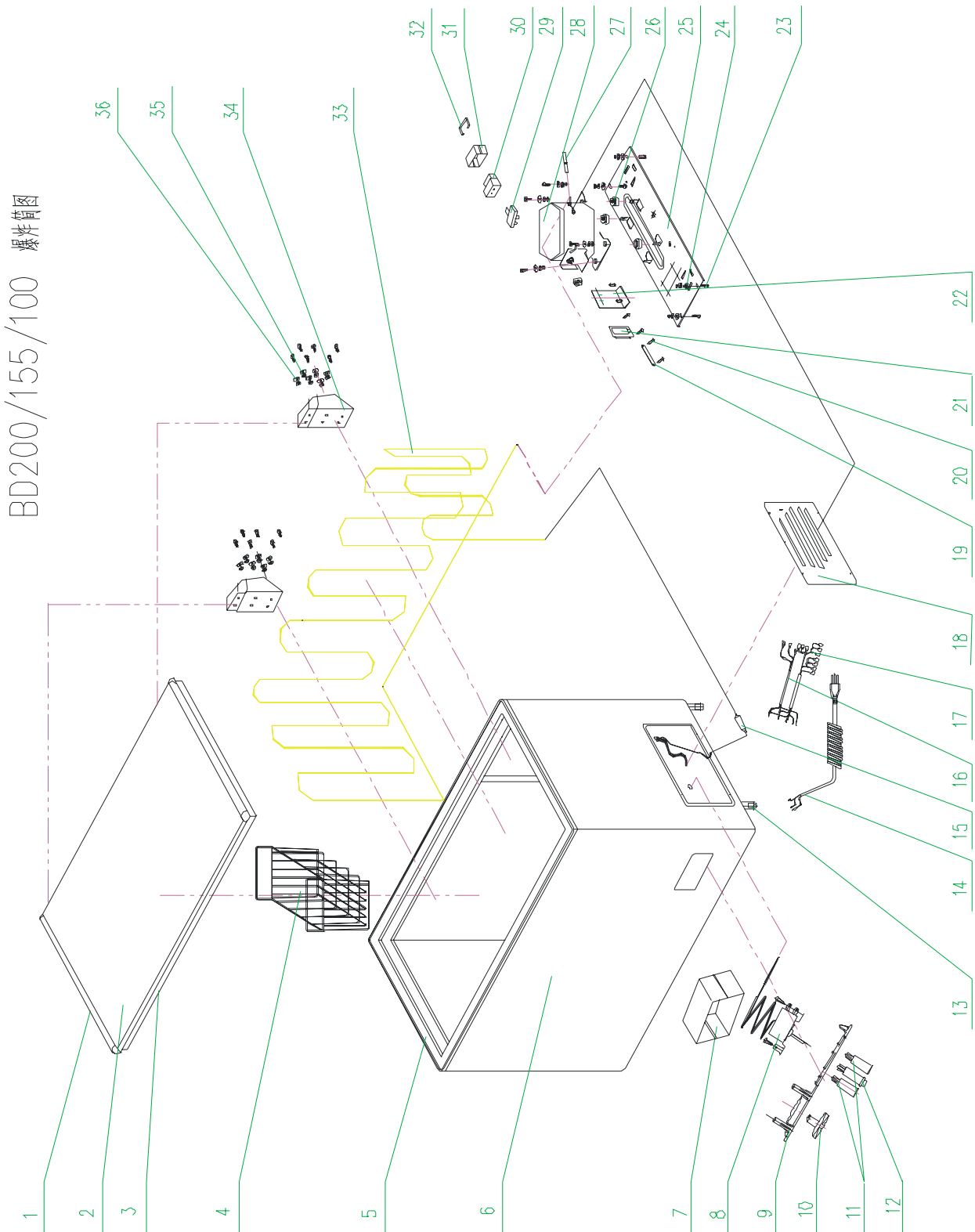
- 1、 specification
- 2、 exploded view
- 3、 part list
- 4、 system diagram
- 5、 circuit diagram
- 6、 trouble shooting

## Server manual

### 1、 specification

MODEL	<b>KS-100C/KS-200C/KS-300C</b> <b>KS-103C/KS-203C/KS-3-3C</b>
TYPE	CHEST FREEZER

2、Exploded view

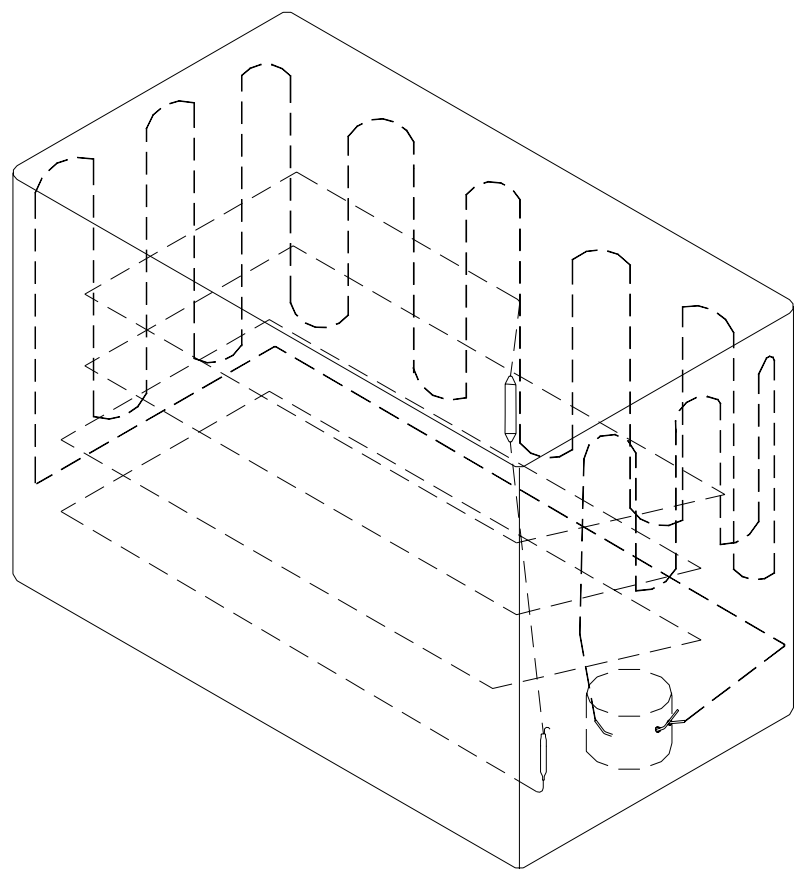


### 3、Part list

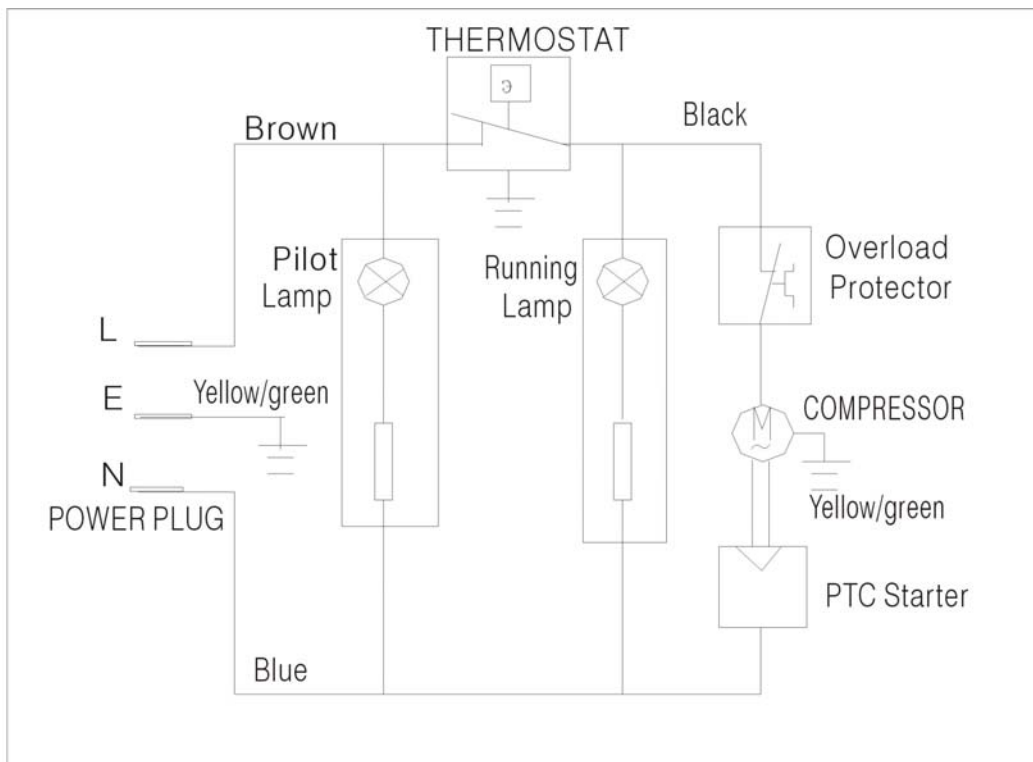
No	Chinese Name	Part Name	Quantity	备注
1	门边框	Door frame	2	
2	门壳	Door panel	1	
3	门封条	Door gasket	1	
4	网篮	Basket	1	
6	围框	Frame	1	
7	箱体	Body	1	
8	温控器	Thermostat	1	
9	温控面罩	Thermostat lid	1	
10	温控旋钮	Thermostat control knob	1	
11	指示灯	Indicator light	1	
12	开关	Switch	1	
13	单向轮	Wheel	2	
14	电源线	Power supply card with plug	1	
15	过滤器	Filter	1	
16	压缩机连线	Compressor connect wire	1	
17	温控连线	Thermostat connect wire	1	
18	百叶窗	Window shade	1	
19	压线板	Press line board	1	
20	压线板螺钉	Press line board bolt	2	
21	铁件接线盒	Junction box	1	
22	接线支架	Connection bracket	1	
23	压缩机底板螺钉	Compressor base bolt	4	
24	压缩机底板垫片	Compressor base washer	4	
25	压缩机底板	Compressor base	1	
26	橡胶垫	Rubber washer	1	
27	加液管	Refrigerant pipe	1	
28	压缩机	Compressor	1	
29	热保护器	Overload protect	1	
30	启动器	PTC starter	1	
31	罩壳	Cover	1	
32	卡簧	Clip reed	1	
33	冷凝管	Condenser	4	
34	弹簧铰链	Spring gemel	2	
35	铰链垫片	Gemel washer	2	
36	铰链螺钉	Gemel bolt	8	
37				

38				
39				

4、system diagram



## 5、 Wiring diagram



## 6、 Trouble shooting guide

N O.	Problem	Possible cause
1	The freezer does not get cold at all	Not plug in. The circuit breaker tripped or fuse. The freezer temperature control is set at “OFF”。
2	The freezer does not get cold enough.	The freezer control dial set to “1” The freezer place in direct sunlight/near a stove or the door is not closed completely. The door being opened and closed frequently。 The door gasket does not seal properly. The freezer overloaded。
3	Vibrations	The freezer is not level and firm.

4	The freezer is noisy	<p>The ratting noise may come from the flow of the freezer which is normal。</p> <p>Contraction and expansion of the inside walls may cause.</p> <p>The freezer unstable or touching the well.</p> <p>The freezer is not level.</p>
5	The door will not close properly.	<p>The freezer is not level.</p> <p>The doors were not properly installed。</p> <p>The gasket is dirty and distortion。</p>
6	The light does not work	<p>The switch is in the “off” position.</p> <p>The home circuit breaker or fuse has tripped.</p> <p>The gasket is dirty and distortion.</p>
7	Operating for all long time	<p>The ambient temperature is too high and temperature controller in freezer chamber is set at strong position.</p> <p>Too much food is placed in the freezer.</p> <p>The door is not closed completely or the gasket not sealing</p> <p>Open the door too often.</p>