

S/M No. :

Service Manual

Microwave Oven

Model: KQG-63475SSC

✓ Caution

: In this Manual, some parts can be changed for improving, their performance without notice in the parts list. So, if you need the latest parts information, please refer to PPL(Parts Price List) in Service Information Center (<http://svc.dwe.co.kr>).

DAEWOO 
ELECTRONICS

Jun. 2010

PRECAUTIONS TO BE OBSERVED BEFORE AND DURING SERVICING TO AVOID POSSIBLE EXPOSURE TO EXCESSIVE MICROWAVE ENERGY

- (a) Do not operate or allow the oven to be operated with the door open.
- (b) Make the following safety checks on all ovens to be serviced before activating the magnetron or other microwave source, and make repairs as necessary: (1) Interlock operation, (2) Proper door closing, (3) Seal and sealing surfaces (arcing, wear, and other damage), (4) Damage to or loosening of hinges and latches, (5) Evidence of dropping or abuse.
- (c) Before turning on power to the microwave oven for any service test or inspection within the microwave generating compartments, check the magnetron, wave guide or transmission line, and cavity for proper alignment, integrity, and connections.
- (d) Any defective or misadjusted components in the interlock, monitor, door seal, and microwave generation and transmission systems shall be repaired, replaced, or adjusted by procedures described in this manual before the oven is released to the owner.
- (e) A microwave leakage check to verify compliance with the Federal performance standard should be performed on each oven prior to release to the owner.

TABLE OF CONTENTS

PRECAUTIONS TO BE OBSERVED BEFORE AND DURING SERVICING TO AVOID POSSIBLE EXPOSURE TO EXCESSIVE MICROWAVE ENERGY	1
SAFETY AND PRECAUTIONS	2
1. FOR SAFE OPERATION	2
2. FOR SAFE SERVICE PROCEDURES	2
SPECIFICATIONS	3
EXTERNAL VIEW	4
1. OUTER DIMENSION	4
2. FEATURES DIAGRAM	5
INSTALLATION	6
OPERATIONS AND FUNCTIONS	7
DISASSEMBLY AND ASSEMBLY	8
INTERLOCK MECHANISM AND ADJUSTMENT	17
TROUBLESHOOTING GUIDE	18
MEASUREMENT AND TEST	20
1. MEASUREMENT OF THE MICROWAVE POWER OUTPUT	20
2. MICROWAVE RADIATION TEST	21
3. COMPONENT TEST PROCEDURE	22
WIRING DIAGRAM	23
EXPLODED VIEW AND PARTS LIST	24
1. DOOR ASSEMBLY	24
2. CONTROL PANEL ASSEMBLY	24
3. TOTAL ASSEMBLY	24

SAFETY AND PRECAUTIONS

1. FOR SAFE OPERATION

Damage that allows the microwave energy (that cooks or heats the food) to escape will result in poor cooking and may cause serious bodily injury to the operator.

IF ANY OF THE FOLLOWING CONDITIONS EXIST, OPERATOR MUST NOT USE THE APPLIANCE.

(Only a trained service personnel should make repairs.)

- (1) A broken door hinge.
- (2) A broken door viewing screen.
- (3) A broken front panel, oven cavity.
- (4) A loosened door lock.
- (5) A broken door lock.

The door gasket plate and oven cavity surface should be kept clean.

No grease, soil or spatter should be allowed to build up on these surfaces or inside the oven.

DO NOT ATTEMPT TO OPERATE THIS APPLIANCE WITH THE DOOR OPEN.

The microwave oven has concealed switches to make sure the power is turned off when the door is opened.

Do not attempt to defeat them.

DO NOT ATTEMPT TO SERVICE THIS APPLIANCE UNTIL YOU HAVE READ THIS SERVICE MANUAL.

2. FOR SAFE SERVICE PROCEDURES

1. If the oven is operative prior to servicing, a microwave emission check should be performed prior to servicing the oven.
2. If any certified oven unit is found to servicing, a microwave emission check should be performed prior to servicing the oven.
 - (a) inform the manufacturer, importer or assembler,
 - (b) repair the unit at no cost to the owner,
 - (c) attempt to ascertain the cause of the excessive leakage,
 - (d) tell the owner of the unit not to use the unit until the oven has been brought into compliance.
3. If the oven operates with the door open, the service person should tell the user not to operate the oven and contact the manufacturer and the dealer immediately.

IMPORTANT

The wire in this mains lead coloured in accordance with the following code.

Green-and-yellow	: Each
Blue	: Neutral
Brown	: Live

As the colours of the wires in the mains lead of this appliance may not correspond with the coloured markings identifying the terminals in your plug, proceed as follows.

The wire which is coloured green-and-yellow must be connected to the terminal in the plug which is marked with the letter 'E', earth symbol or coloured green-and-yellow.

The wire which is coloured blue must be connected to the terminal which is marked with the letter 'N' or coloured black.

The wire which is coloured brown must be connected to the terminal which is marked with the letter 'L' or coloured red.

NOTE :

The oven is designed for counter-top use only.

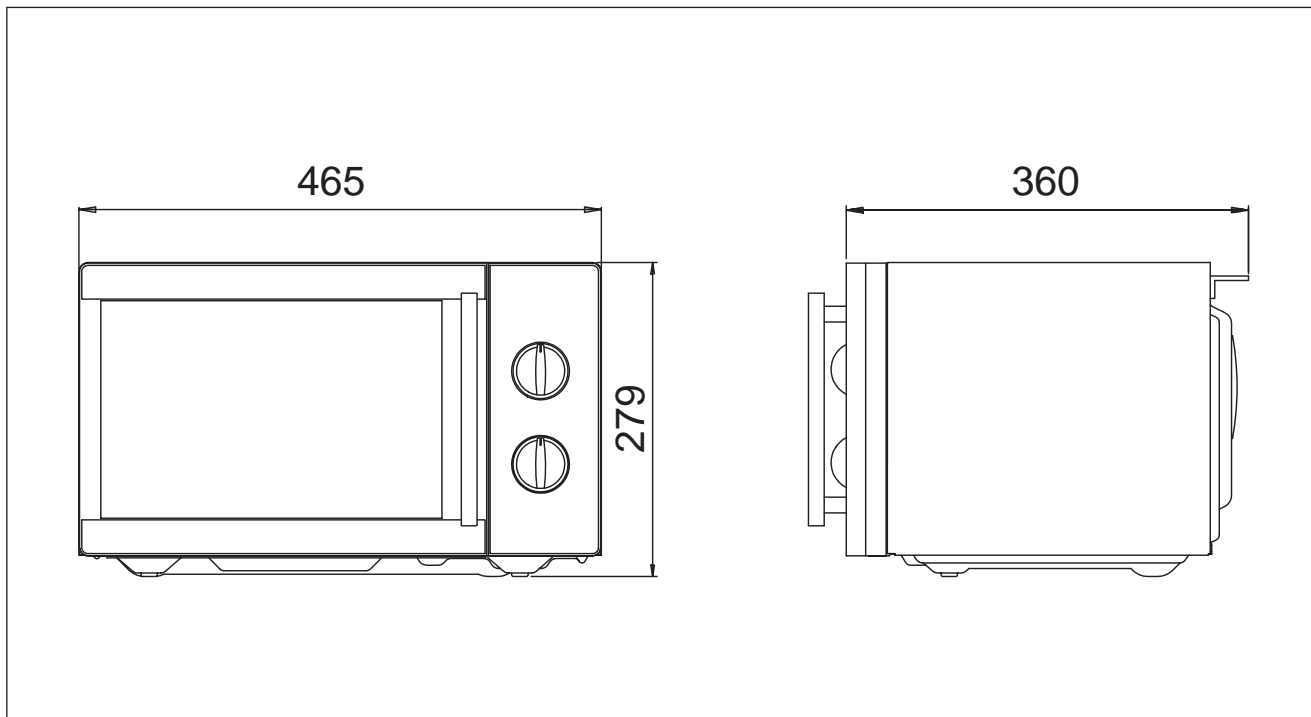
SPECIFICATIONS

POWER SUPPLY		230V AC, 50Hz SINGLE PHASE WITH EARTHING
POWER CONSUMPTION	MICROWAVE	1200 W
	GRILL	1050 W
	COMBINATION	2200 W
MICROWAVE ENERGY OUTPUT		800 W
MICROWAVE FREQUENCY		2,450 MHz
OUTSIDE DIMENSIONS (WXHxD)		465 x 279 x 360 mm
CAVITY DIMENSIONS (WXHxD)		290 x 208 x 306 mm
NET WEIGHT		APPROX. 14 Kg
TIMER		35 min. DUAL SPEED
POWER SELECTIONS		7 Levels

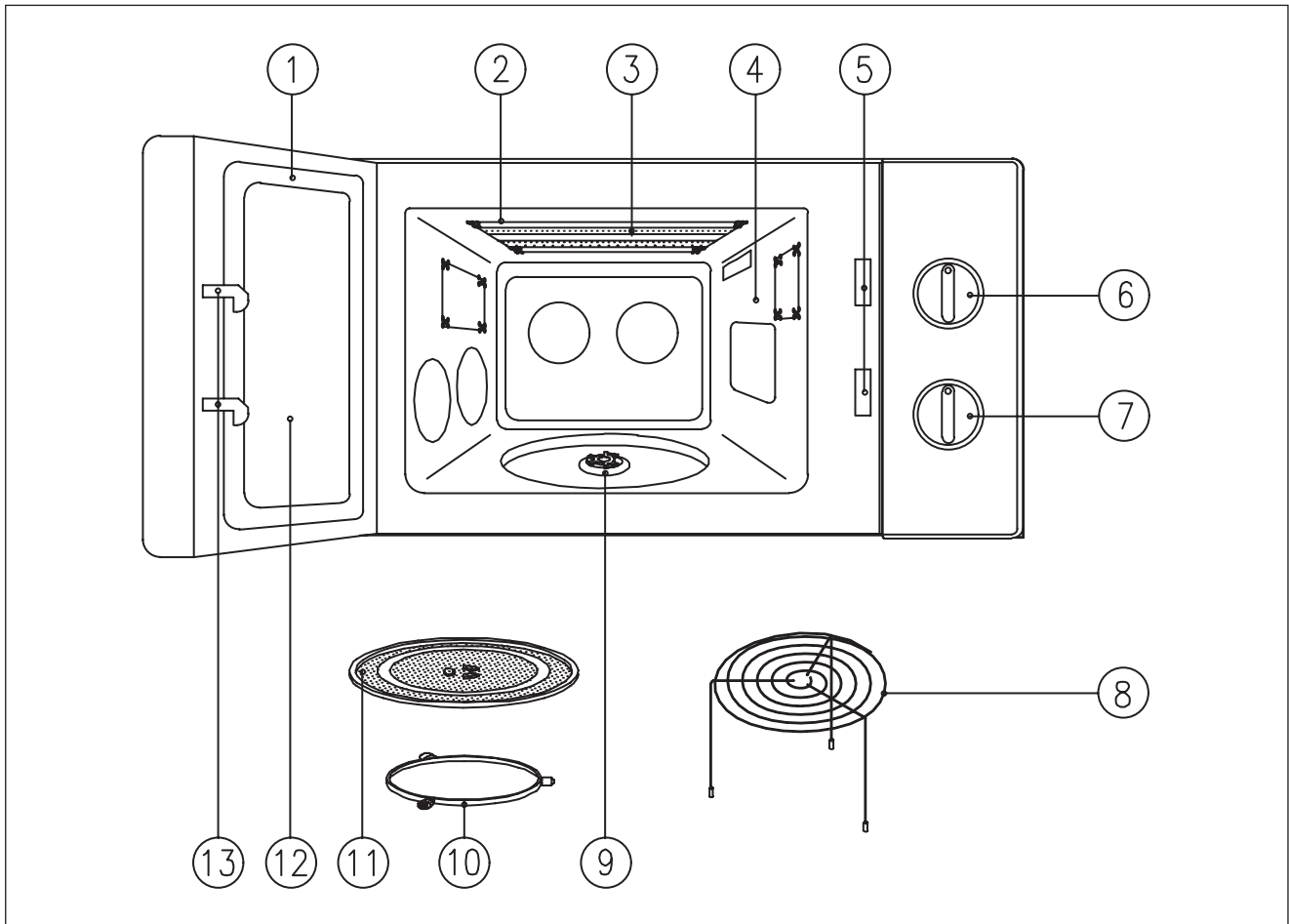
** Specifications are subject to change without notice.*

EXTERNAL VIEW

1. OUTER DIMENSION



2. FEATURES DIAGRAM



① **Door seal** - Door seal maintains the microwave energy within the oven cavity and prevents microwave leakage.

② **Cover Heater**

③ **Heating Element**

④ **Oven cavity**

⑤ **Safety interlock system**

⑥ **Knob V.P.C** - Used to select a microwave power level.

⑦ **Knob timer** - Used in setting cooking time for all functions.

⑧ **Metal Rack**

⑨ **Coupler** - This fits over the shaft in the center of the ovens cavity floor This is to remain in the oven for all cooking.

⑩ **Roller guide** - This must always be used for cooking together with the glass cooking tray

⑪ **Glass cooking tray** - Made of special heat resistant glass Food in a proper receptacle is placed on this tray for cooking.

⑫ **Door viewing screen** - Allows viewing of food The screen is designed so that light can pass through, but not the microwave.

⑬ **Door hook** - When the door is closed, it will automatically shut off If the door is opened while the oven is operating, the magnetron will immediately stop operating.

INSTALLATION

1. Steady, flat location

This microwave oven should be set on a steady, flat surface.
This microwave oven is designed for counter top use only.

2. Leave space behind and side

All air vents should be kept a clearance. If all vents are covered during operation, the oven may overheat and, eventually, cause oven failure.

3. Away from Radio and TV sets

Poor television reception and radio interference may result if the oven is located close to a TV, Radio, antenna or feeder and so on.

4. Away from heating appliances and water taps

Keep the oven away from hot air, steam or splash when choosing a place to position it, or the insulation might be adversely affected and breakdowns occur.

5. Power supply

- Check your local power source.
This microwave oven requires a current of approximately 10 amperes, 230Volts, 50Hz grounded outlet.
- Power supply cord is about 1.0 meters long.
- The voltage used must be the same as specified on this oven. Using a higher voltage may result in a fire or other accident causing oven damage. Using low voltage will cause slow cooking. We are not responsible for damage resulting from use of this oven with a voltage of ampere fuse other than those specified.
- This appliance is supplied with cable of special type, which, if samaged, must be repaired with cable of same type. Such a cable can be purchased from DAEWOO and must be installed by a qualified person.

6. Examine the oven after unpacking for any damage such as:

A misaligned door, broken door or a dent in cavity.
If any of the above are visible, DO NOT INSTALL, and notify dealer immediately.

7. Do not operate the oven if it is colder than room temperature

(This may occur during delivery in cold weather.) Allow oven to become room temperature before operating.

EARTHING INSTRUCTIONS



This appliance must be earthed. In the event of an electrical short circuit, earthing reduces the risk of the electric shock by providing an escape wire for the electric current. This appliance is equipped with a cord having a earthing wire with a earthing plug. The plug must be plugged into an outlet that is properly installed and earthed.

WARNING

Improper use of the earthing plug can result in a risk of electric shock. Consult a qualified electrician or serviceman if the earthing instructions are not completely understood, or if doubt exists as to whether the appliance is properly earthed, and either: If it is necessary to use an extension cord, use only a 3-wire extension cord that has a 3-blade earthing plug, and a 3-slot receptacle that will accept the plug on the appliance. The marked rating of the extension cord should be equal to or greater than the electrical rating of the appliance, or Do not use an extension cord.

OPERATION AND FUNCTIONS

- 1 Connect the mains lead to an electrical outlet.
- 2 After placing the food in a suitable utensil, open the oven door and put it on the glass tray. Glass tray must always be in place during cooking.
- 3 Shut the door.
Make sure that it is firmly closed.
- 4 How to set each function
To set MICROWAVE cooking
 - Set the variable power selector to the desired power level.

SYMBOL	POWER LEVEL	OUTPUT POWER
	WARM	26%
	DEFROST	41%
580W	MEDILUM	73%
700W	MED-HIGH	88%
MAX	HIGH	100%

To set GRILL Cooking

- Set the POWER SELECTOR to the  (grill) position.

To set COMBI Cooking

- Set the POWER SELECTOR to the  (combi) position.

- 5 Set the time control by turning the timer knob and then microwave cooking starts.
 - If turning the timer knob for less than 2 minutes, turn it past 2 minutes and then back to the desired time.
 - During the same time, the rotating angle of the timer knob of the period from 60 to 10 minute is smaller than that of the period from 10 to 0 minute owing to the dual speed of the timer motor.
- 6 Microwave energy will be turned off automatically when the timer point to "OFF".
Then take out foods.
 - To prevent the oven operating with the door open, your microwave oven is fitted with safety door interlock switches. If you wish to inspect the food during the cooking time, simply open the door.
The oven will automatically stop cooking.
To continue cooking, you simply close the door.
 - If you wish to stop cooking during the cooking, simply turn the timer knob the point "OFF".
Cooking can be reset at any time during the cooking cycle by only turning the timer knob.
 - Do not let the timer continue to operate after removing food.
- 7 NOTE : When using the GRILL or COMBI mode;
 - Do not open the door so often, the temperature inside the oven decrease and the cooking may not be completed in setting time.
 - Never touch the oven window and metal interior of the oven when taking food in and out, because the temperature inside the oven and door is very high.
 - When using these modes, be careful as the tray will be hot to touch, use oven gloves or pot holders while handling tray.

DISASSEMBLY AND ASSEMBLY

Cautions to be observed when trouble shooting.

Unlike many other appliances, the microwave oven is high-voltage, high-current equipment.

It is completely safe during normal operation.

However, carelessness in servicing the oven can result in an electric shock or possible danger from a short circuit.

You are asked to observe the following precautions carefully.

1. Always remove the power plug from the outlet before servicing.
2. Use an insulated screwdriver and wear rubber gloves when servicing the high voltage side.
3. Discharge the high voltage capacitor before touching any oven components or wiring.

(1) Check the grounding.

Do not operate on a two-wire extension cord.

The microwave oven is designed to be used while earthed.

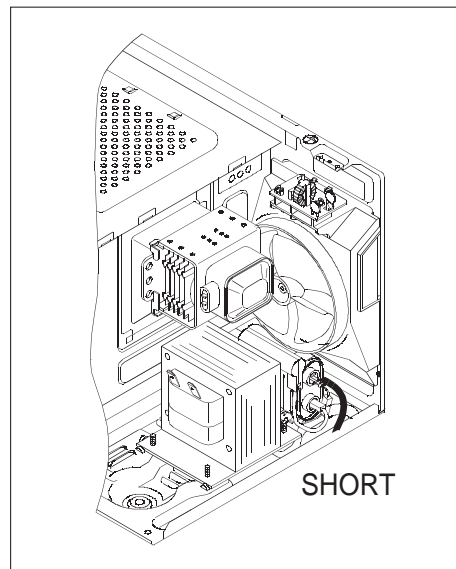
It is imperative, therefore, to make sure it is earthed properly before beginning repair work.

(2) Warning about the electric charge in the high voltage capacitor.

For about 30 seconds after the operation stopped and electric charge remains in the high voltage capacitor.

When replacing or checking parts, short between oven chassis and the negative high terminal of the high voltage capacitor by using a properly insulated screwdriver to discharge.

4. When the fuse is blown out due to the operation of the monitor switch; replace primary interlock switch, secondary interlock switch and interlock monitor switch.
5. After repair or replacement of parts, make sure that the screws are properly tightened, and all electrical connections are tightened.
6. Do not operate without cabinet.

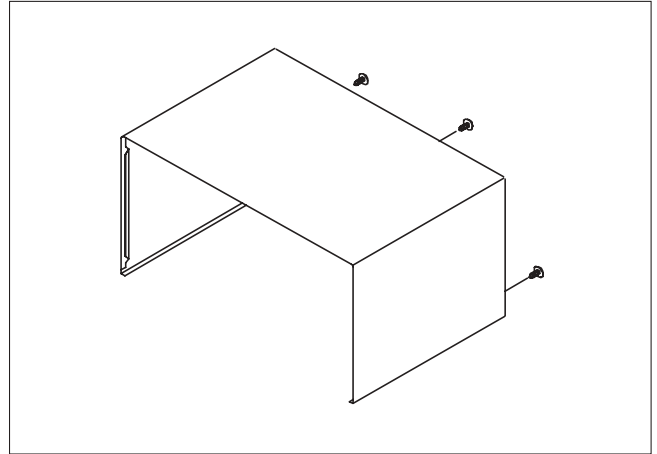


CAUTION : Service personnel should remove their watches whenever working close to or replacing the magnetron.

WARNING : When servicing the appliance, need a care of touching or replacing high potential parts because of electrical shock or exposing microwave. These parts are as follows - HV Transformer, Magnetron, HV Capacitor, HV Diode, HV fuse.

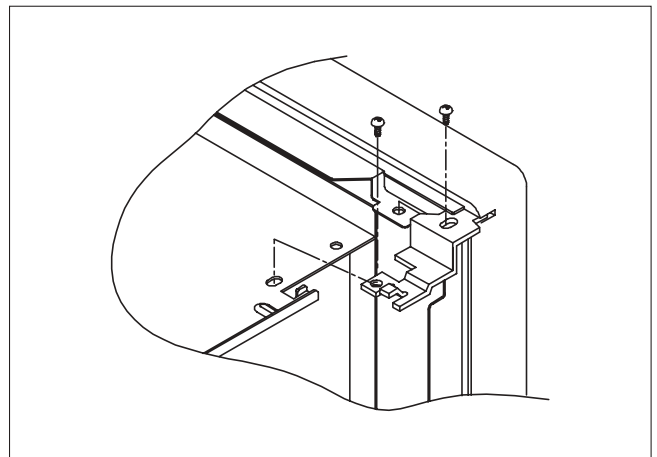
1. To remove cabinet

- 1) Remove three screws on cabinet back.
- 2) Pull the cabinet backward.



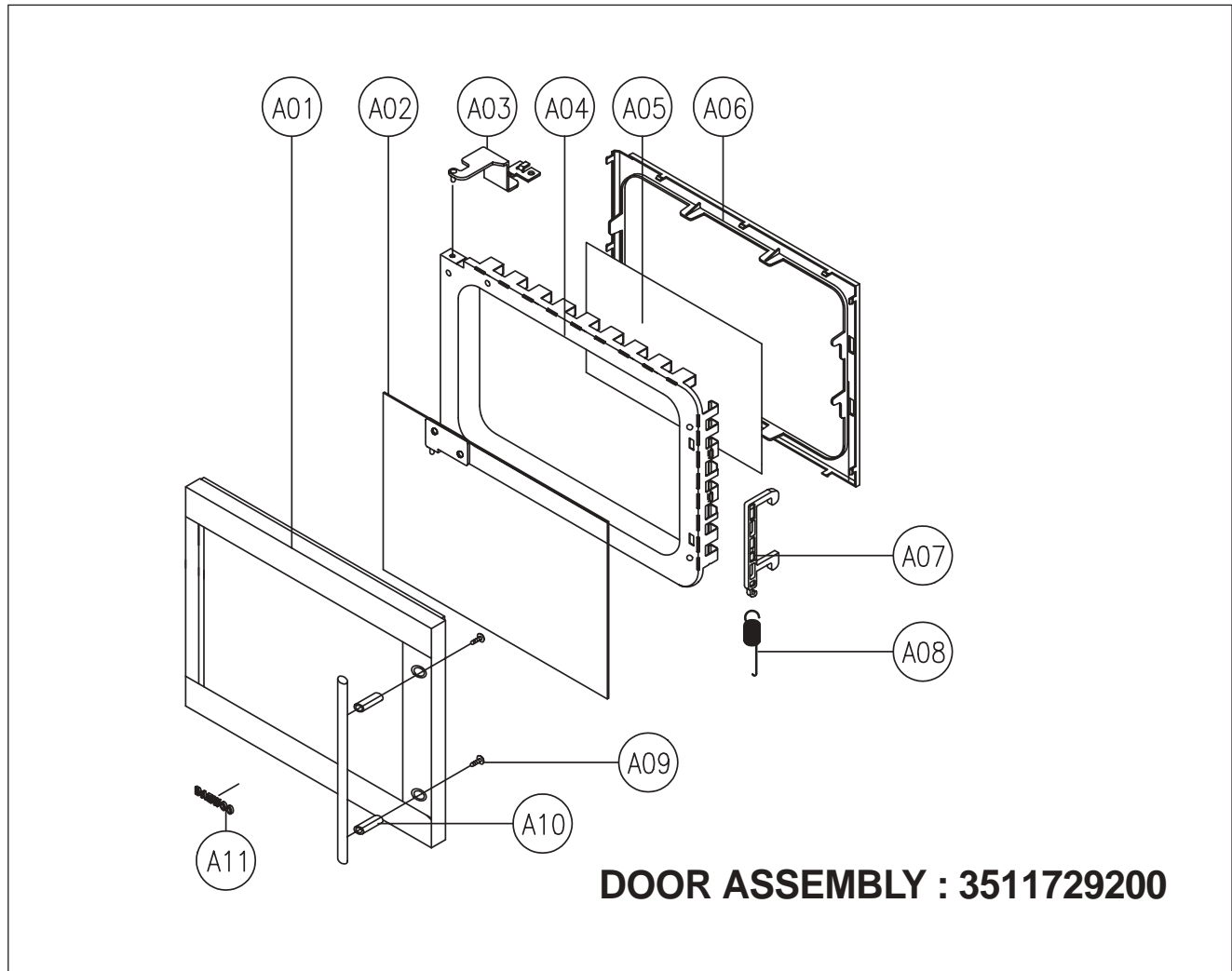
2. To remove door assembly

- 1) Remove two screws which secure the stopper hinge top.
- 2) Remove the door assembly from top plate of cavity.
- 3) Reverse the above for reassembly.



NOTE : After replacing the door assembly, perform a check of correct alignment with the hinge and cavity front plate.

3. To remove door parts.



REF. NO	PART CODE	PART NAME	DESCRIPTION	Q'TY	REMARK
A01	3511718000	DOOR SUB AS	KOR-634R0S	1	
A02	3517005620	BARRIER-SCREEN*O	TEMP GLASS T3.2	1	
A03	3515204100	STOPPER HINGE*T AS	KOR-63150S	1	
A04	3511719500	DOOR PAINTING AS	KOR-6C0B5S	1	
A05	3517002800	BARRIER-SCREEN*I	PE 0.1T	1	
A06	3512300210	GASKET DOOR	PP	1	
A07	3513100730	HOOK	POM BLACK	1	
A08	3513101320	SPRING HOOK	HSW-3	1	
A09	7122402011	SCREW TAPPING	T2S TRS 4X20 MFZN	2	
A10	3512603240	HANDLE DOOR	ABS MP-0160	1	
A11	3511601500	DECORATOR LOGO	AL T1.5	1	

- (1) Remove the gasket door from door weld as.
- (2) Remove the barrier screen inner from weld as.
- (3) Remove the door frame from door weld as.
- (4) Remove the stopper hinge top from door weld as.
- (5) Remove the spring and the hook.
- (6) Remove the barrier screen outer from door frame.
- (7) Reverse the above steps for reassembly.

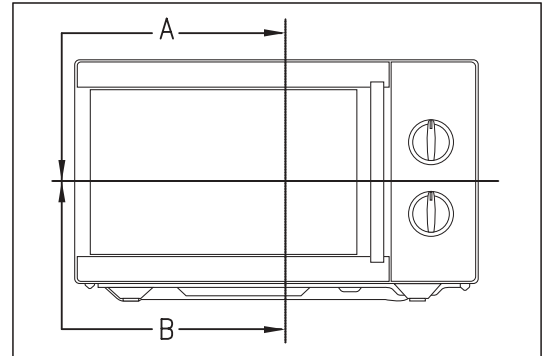
4. Method to reduce the gap between the door seal and the oven front surface.

(1) To reduce gap located on part 'A'

- Loosen two screws on the stopper hinge top, and then push the door to contact the door seal to the oven front surface.
- Tighten two screws.

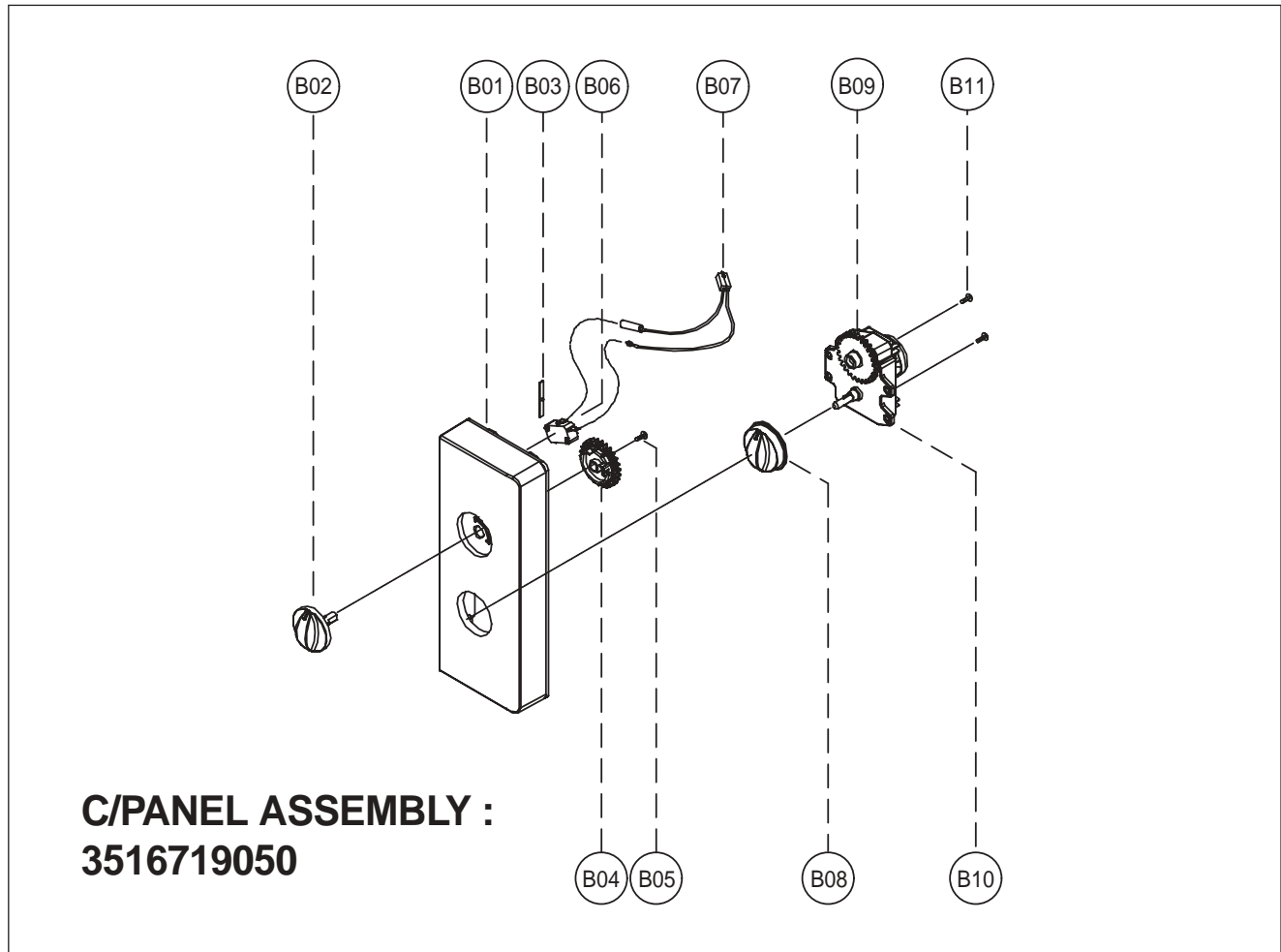
(2) To reduce gap located on part 'B'

- Loosen two screws on the stopper hinge under, and then push the door to contact the door seal to the oven front surface.
- Tighten two screws.



NOTE : A small gap may be acceptable if the microwave leakage does not exceed 4mW/cm².

5. To remove control panel parts.

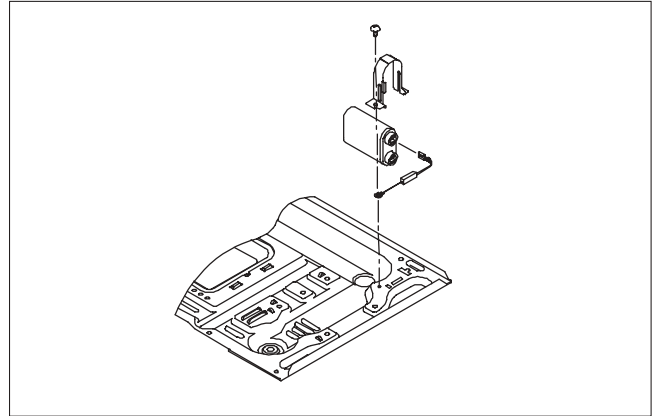


REF. NO	PART CODE	PART NAME	DESCRIPTION	Q'TY	REMARK
B01	3516719060	CONTROL-PANEL SUB AS	KOR-63470S	1	
B02	3513402650	KNOB VPC	ABS SG-0760D SG-175	1	
B03	3515101600	SPRING FLAT	SUS 301 T0.5	1	
B04	3517400510	COUPLER VPC KNOB	POM	1	
B05	7122401211	SCREW TAPPING	T2S TRS 4*12 MFZN	1	
B06	4415A17352	SW MICRO	VP-533A-OF SPNO #187 200G	1	
B07	3512766301	HARNESS TIMER	KOG-37150S	1	
B08	3513402550	KNOB	ABS SG-0760D SG-175	1	
B09	3517400400	COUPLER TIMER	POM	1	
B10	3518205500	TIMER	NT35MKD27E-P BROWNER ONLY	1	
B11	7122401211	SCREW TAPPING	T2S TRS 4*12 MFZN	2	

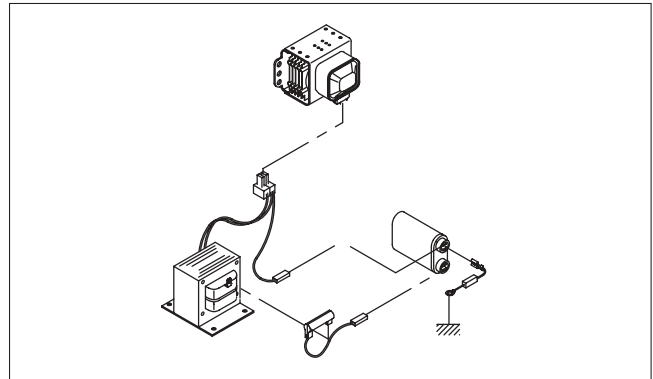
- (1) Remove the screw which secure the control panel, push up two snap fits and draw forward the control panel assembly.
- (2) Remove two screws which secure the timer assembly.
- (3) Remove the timer assembly.
- (4) Pull out the timer knob from the timer.
- (5) Pull out the timer coupler from the timer.
- (6) Remove the screw which secure the V.P.C coupler.
- (7) Pull out the V.P.C coupler, V.P.C knob and flat spring from the control panel.
- (8) Reverse the above steps for reassembly.

6. To remove high voltage capacitor.

- 1) Remove a screw which secure the grounding ring terminal of the H.V. diode and the capacitor holder.
- 2) Remove the H.V. diode from the capacitor holder.
- 3) Reverse the above steps for reassembly.

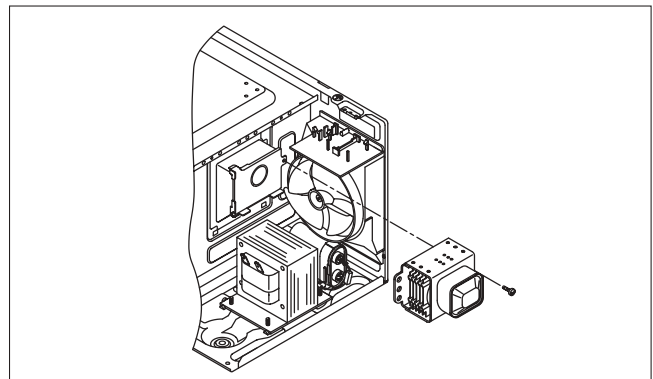


◆ High voltage circuit wiring

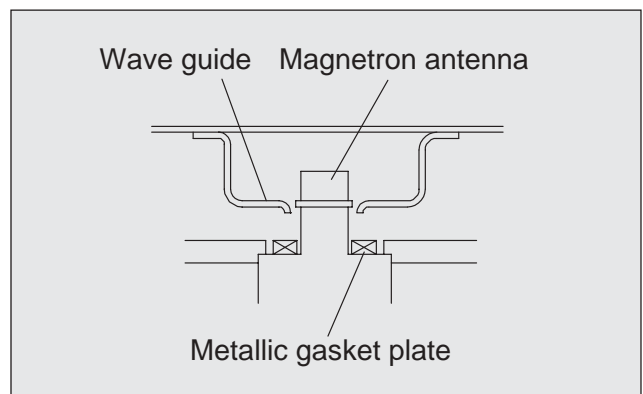
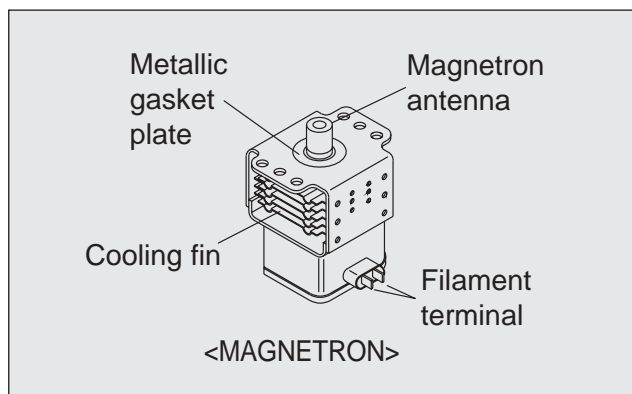


7. To remove magnetron.

- 1) Remove a screw which secure the magnetron.
- 2) Remove the magnetron.
- 3) Reverse the above steps for reassembly.

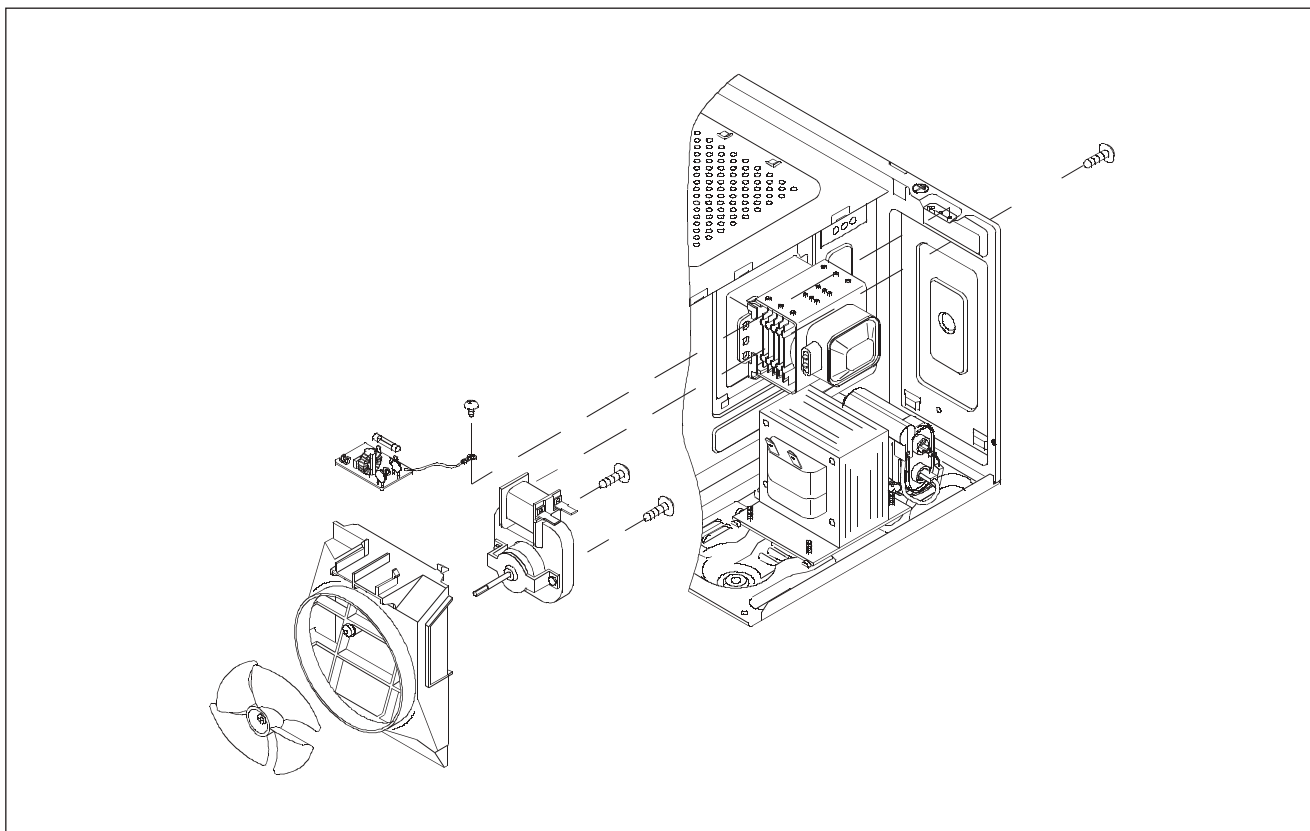


NOTE : Never install the magnetron without the metallic gasket plate which is packed with each magnetron to prevent microwave leakage. Whenever repair work is carried out on magnetron, check the microwave leakage. It shall not exceed $4\text{mW}/\text{cm}^2$ for a fully assembled oven with door normally closed.



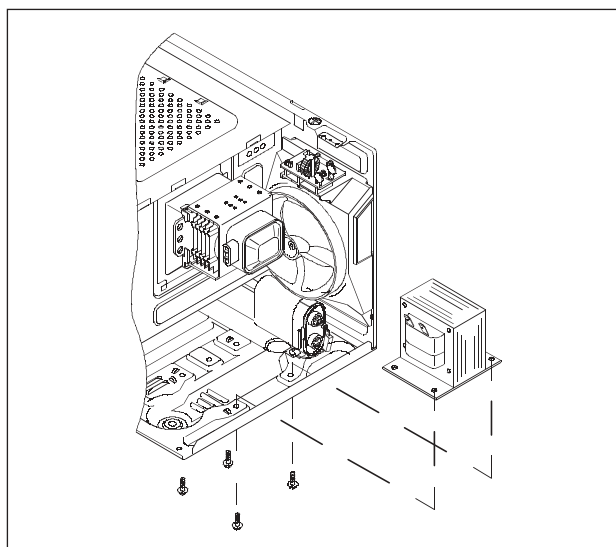
8. To remove wind guide assembly.

- 1) Remove the screw for earthing.
- 2) Remove the noise filter from the wind guide.
- 3) Remove the screw which secure the wind guide assembly.
- 4) Draw forward the wind guide assembly.
- 5) Pull the fan from the motor shaft.
- 6) Remove two screws which secure the motor shaded pole.
- 7) Remove the motor shaded pole.
- 8) Reverse the above steps for reassembly.



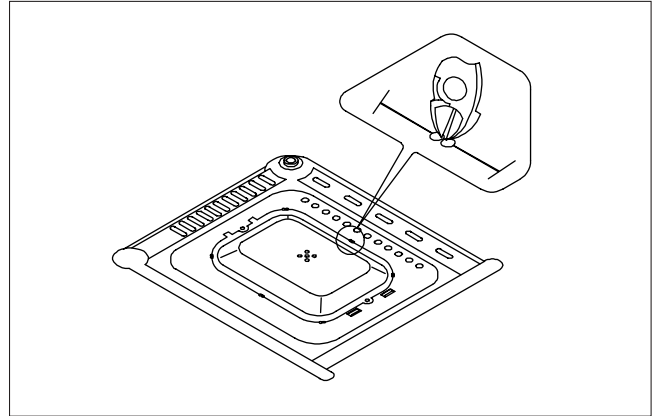
9. To remove H.V.transformer.

- 1) Remove four screws holding the H.V.transformer.
- 2) Remove the H.V.transformer.
- 3) Reverse the above steps for reassembly.

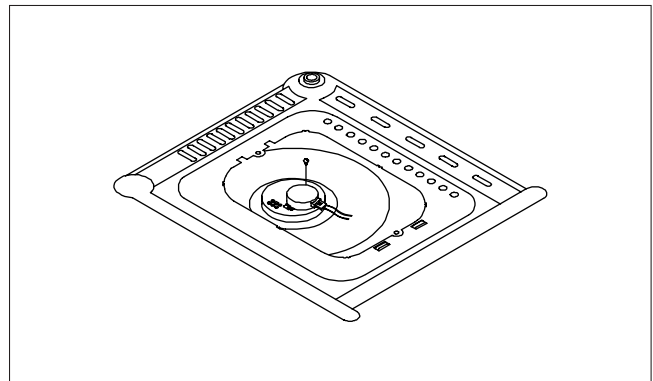


10. To remove tray motor.

- 1) Remove the coupler in the cavity.
- 2) Turn the set upside down.
- 3) Cut the tray motor cover part from the base plate.
- 4) Remove the tray motor cover.

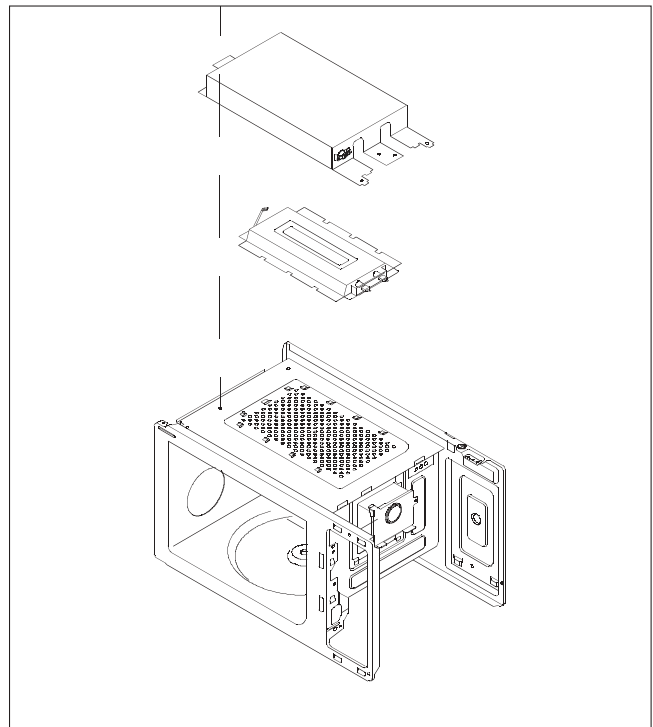


- 5) Remove a screw which secure the tray motor.
- 6) Remove the tray motor.
- 7) Reverse the above steps for reassembly except for securing the tray motor cover with screw.

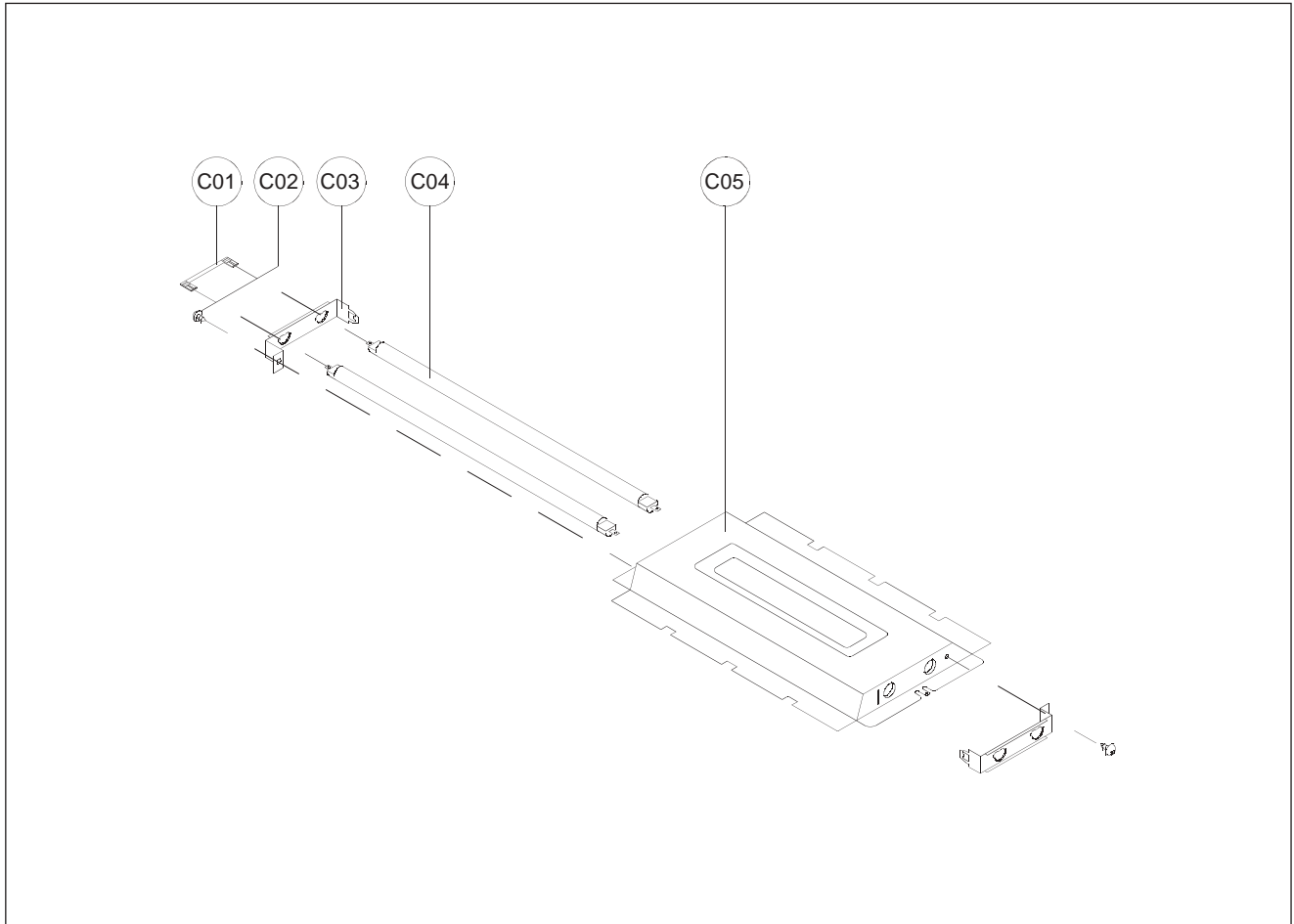


11. To remove heater assembly.

- 1) Remove one side of the heater harness.
- 2) Remove a screw which secure the cover insulator top.
- 3) Remove the cover insulator top.
- 4) Remove the heater top assembly.
- 5) Reverse the above steps for reassembly.



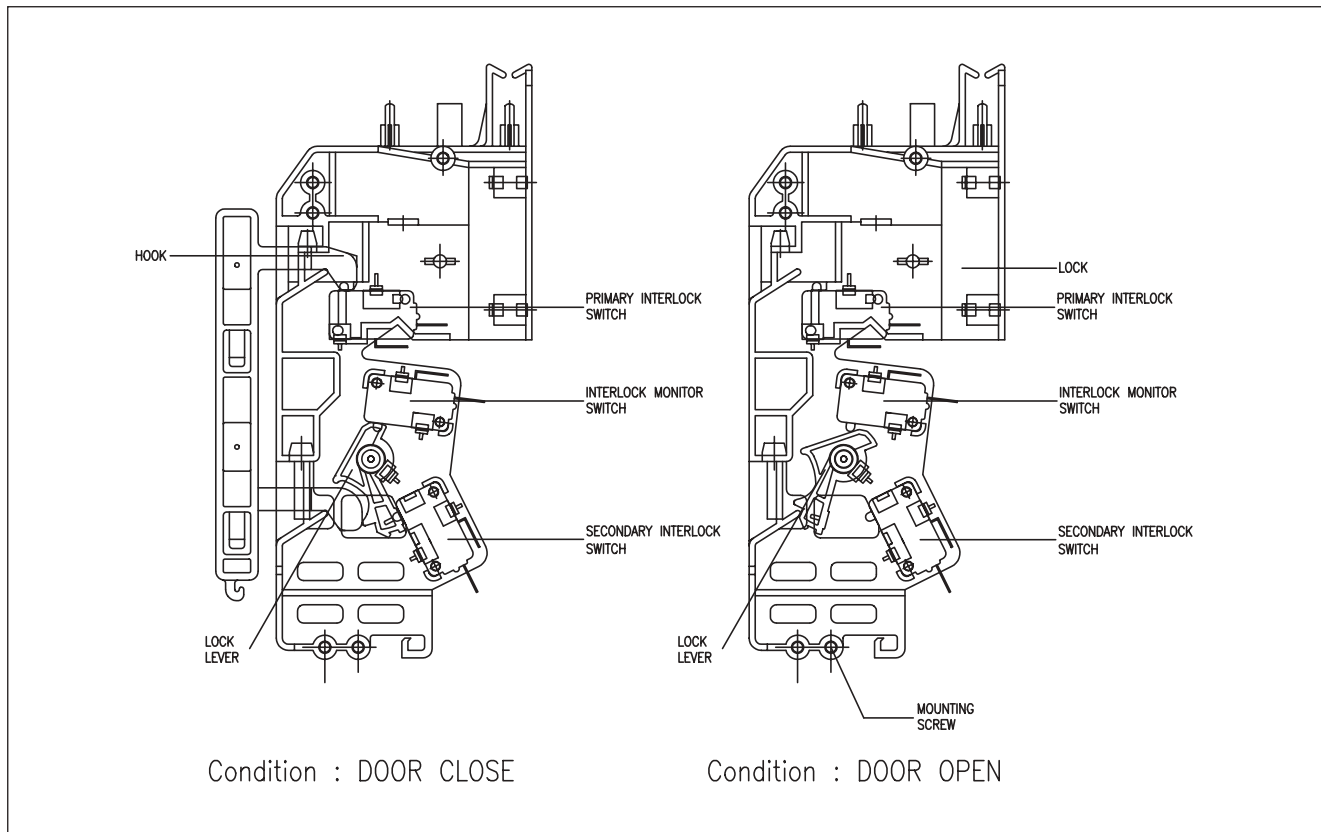
12. To remove heater parts.



REF. NO	PART CODE	PART NAME	DESCRIPTION	Q'TY	REMARK
C01	3512765100	HARNESS HEATER	KOC-970T1S TEFLON	1	
C02	7112401011	SCREW TAPPING T1	TRS 4X10 MFZN	2	
C03	3510607800	BRACKET HEATER *T	SBHG T0.5	2	
C04	3512803700	HEATER MIRACLON	115V AC 500W	2	
C05	3511408100	COVER HEATER *T	STS430 T0.5	1	

INTERLOCK MECHANISM AND ADJUSTMENT

The door lock mechanism is a device which has been specially designed to completely eliminate microwave radiation when the door is opened during operation, and thus to perfectly prevent the danger resulting from the leakage of microwave.



(1) Primary interlock switch

When the door is closed, the hook locks the oven door. If the door is not closed properly, the oven will not operate. When the door is closed, the hook pushes the button of the microswitch. Then the button of the primary interlock switch bring it under ON condition.

(2) Secondary interlock switch and interlock monitor switch

When the door is closed, the hook pushes the lock lever downward. The lock lever presses the button of the interlock monitor switch to bring it under NO condition and presses the button of the secondary interlock switch to bring it under ON condition.

ADJUSTMENT :

Interlock monitor switch

When the door is closed, the interlock monitor switch should be changed (NO condition) before other switches are closed. When the door is opened, the interlock monitor switch should be changed (NC condition) after other switches are opened.

(3) Adjustment steps

- Loosen the one mounting screws.
- Adjust interlock switch assembly position.
- Make sure that lock lever moves smoothly after adjustment is completed.
- Tighten completely one mounting screws.

NOTE :

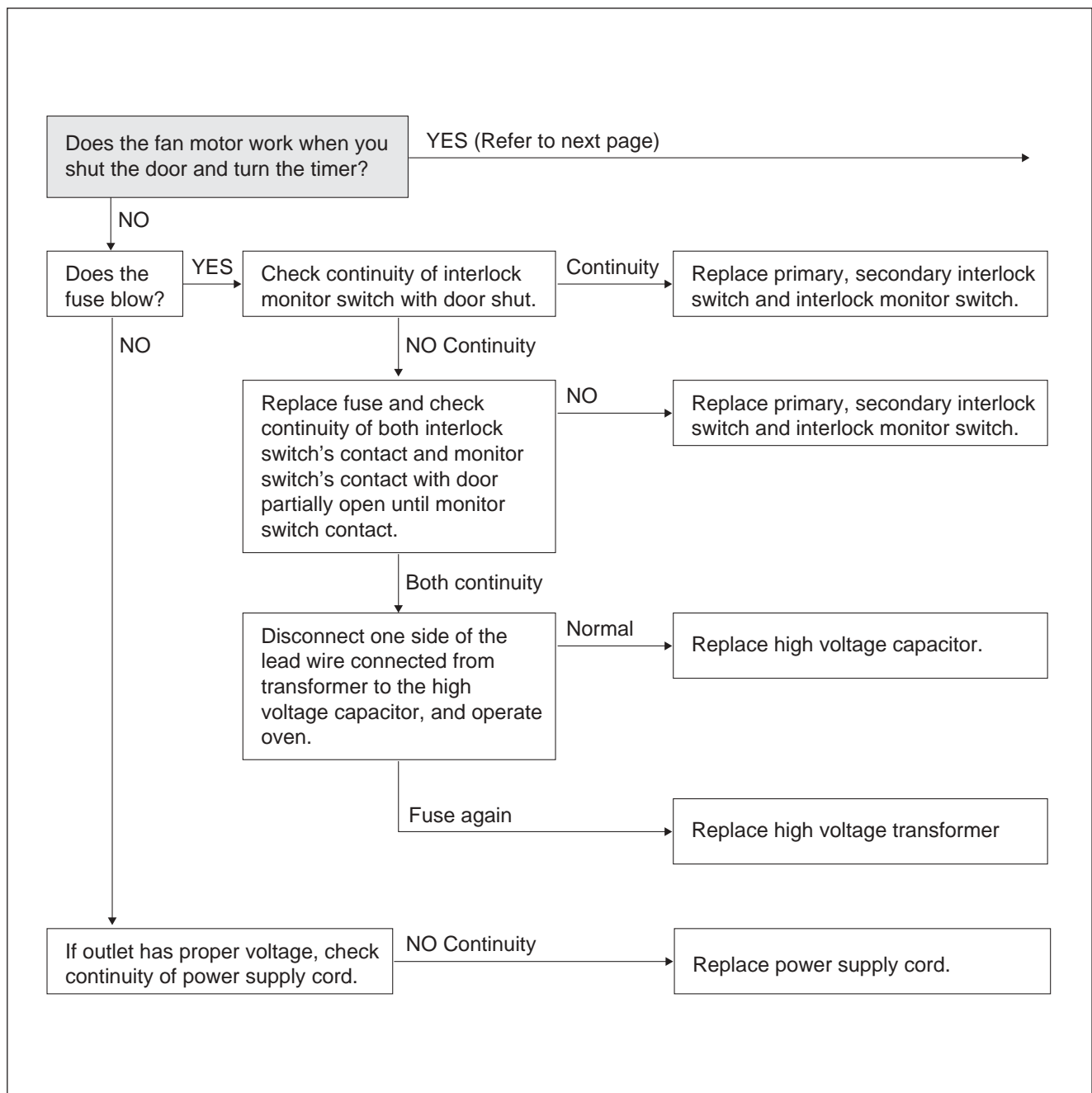
Microwave emission test should be performed after adjusting interlock mechanism. If the microwave smission exceed $4\text{mW}/\text{cm}^2$, readjust interlock mechanism.

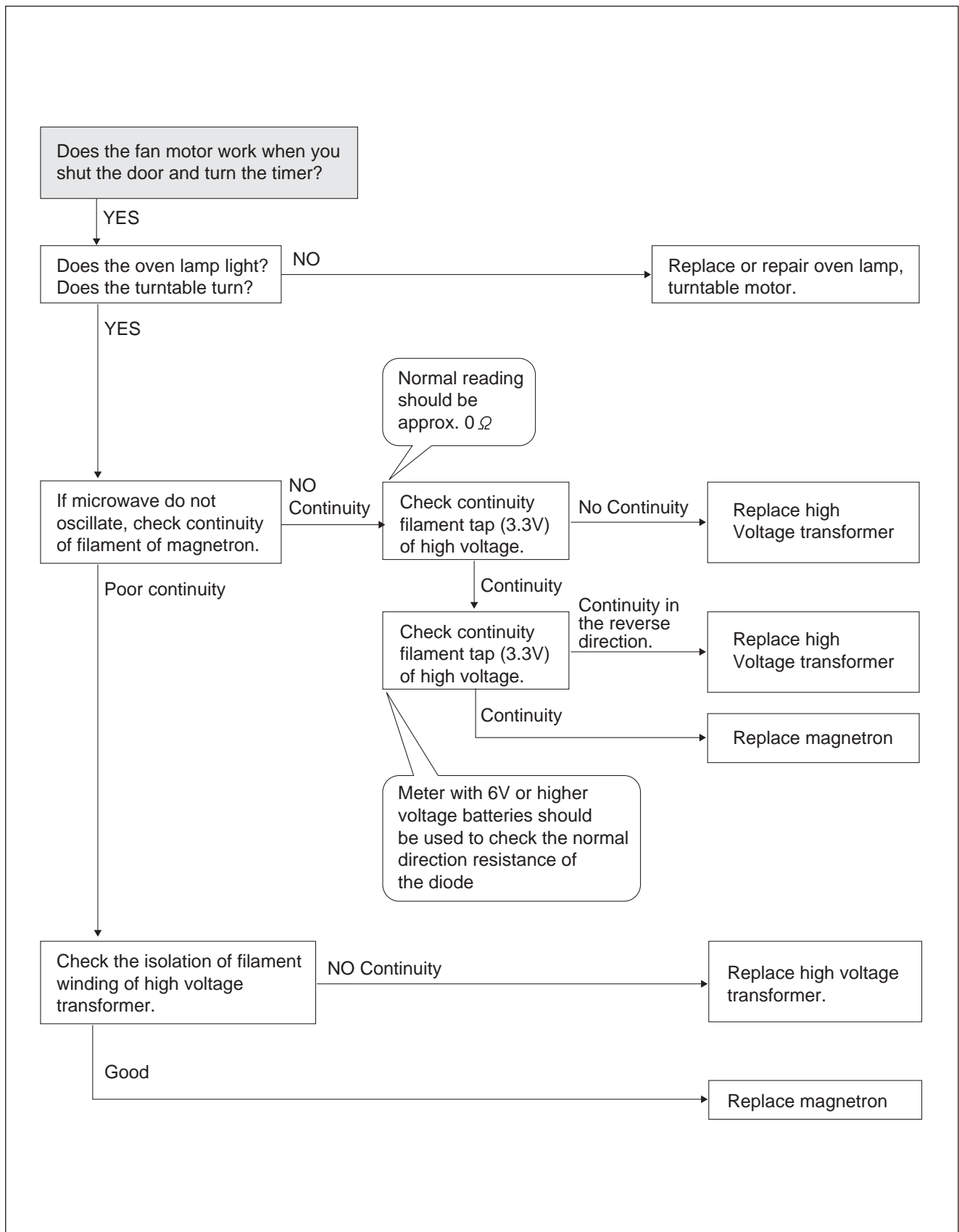
TROUBLESHOOTING GUIDE

Following the procedure below to check if the oven is defective or not.

1. Check grounding before trouble checking.
2. Be careful of the high voltage circuit.
3. Discharge the high voltage capacitor.
4. When checking the continuity of the switches, fuse or high voltage transformer, disconnect one lead wire from these parts and check continuity with the AC plug removed. To do otherwise may result in a false reading or damage to your meter.

(TROUBLE 1) Door shut, timer set, but no cooking takes place.





MEASUREMENT AND TEST

1. MEASUREMENT OF THE MICROWAVE POWER OUTPUT

Microwave output power can be checked by indirectly measuring the temperature rise of a certain amount of water exposed to the microwave as directed below.

PROCEDURE

1. A cylindrical container of borosilicate glass is used for the test. It has a maximum thickness of 3mm, an external diameter of approximately 190mm and a height of approximately 90mm.
The mass of the container is determined.
2. At the start of the test, the oven and the empty container are at ambient temperature. Water having an initial temperature of $10^{\circ}\text{C} \pm 1^{\circ}\text{C}$ is used for the test. The water temperature is measured immediately before it is poured into the container.
3. A quantity of $1000\text{g} \pm 5\text{g}$ of water is added to the container and its actual mass obtained.
The container is then immediately placed in the centre of the oven shelf, which is in its lowest normal position.
The oven is operated and the time for the water temperature to attain $20^{\circ}\text{C} \pm 2^{\circ}\text{C}$ is measured. The oven is then switched off and the final water temperature is measured within 60s.

NOTE 1 - The water stirred is before its temperature is measured.

NOTE 2 - Stirring and measuring devices are to have a low heat capacity.

4. The microwave power output is calculated from the formula

$$P = 4,187 \cdot m_w(T_2 - T_1)/t + 0.55 \cdot m_c(T_2 - T_0)/t$$

where

P is the microwave power output, in watts ;

m_w is the mass of the water, in grams ;

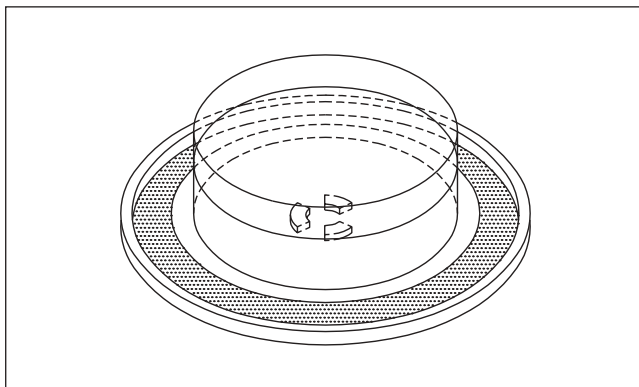
m_c is the mass of the container, in grams ;

T_0 is ambient temperature, in degrees Celsius ;

T_1 is the initial temperature of the water, in degree Celsius ;

T_2 is the final temperature of the water, in degrees Celsius ;

t is the heating time, in seconds, excluding the magnetron filament heating-up time.



* The microwave power output is stated in watts, rounded off to the nearest 50W

CAUTION

1. Water load should be measured exactly to 1 liter.
2. Input power voltage should be exactly specified voltage (Refer to 2. SPECIFICATIONS).
3. Ambient temperature should be $20 \pm 2^{\circ}\text{C}$ ($68 \pm 3.6^{\circ}\text{F}$)

* Heating time for power output: ($T_2 = T_0$)

A (second)	70	64	60	56	52	49	47	44	42	40	38
B (W)	600	650	700	750	800	850	900	950	1000	1050	1100

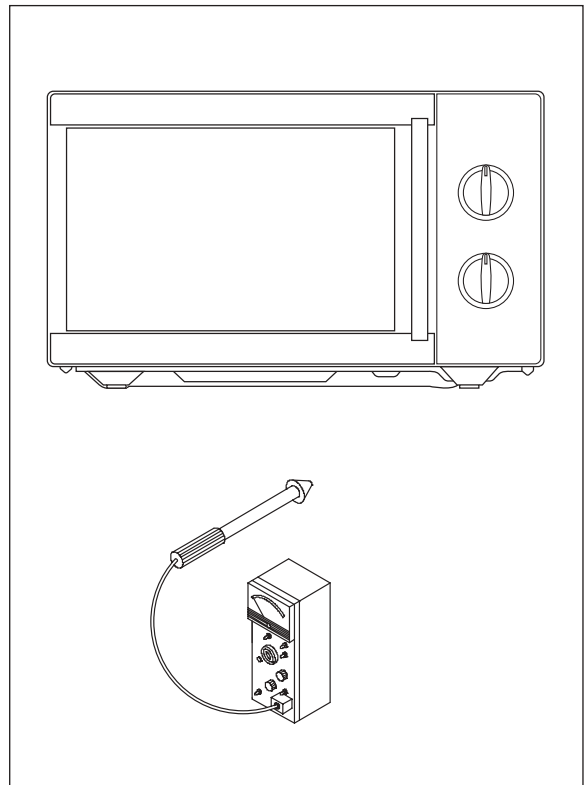
2. MICROWAVE RADIATION TEST

CAUTION :

1. Make sure to check the microwave leakage before and after repair of adjustment.
2. Always start measuring of an unknown field to assure safety for operating personnel from microwave energy.
3. Do not place your hands into any suspected microwave radiation field unless the safe density level is known.
4. Care should be taken not to place the eyes in direct line with the source of microwave energy.
5. Slowly approach the unit under test until the radiometer reads an appreciable microwave leakage from the unit under the test.

PROCEDURES

1. Prepare Microwave Energy Survey Meter, 600cc glass beaker, and glass thermometer $100^{\circ}\text{C}(212^{\circ}\text{F})$.
2. Pour $275\text{cc}\pm 15\text{cc}$ of tap water initially at $20\pm 5^{\circ}\text{C}(68\pm 9^{\circ}\text{F})$ in the 600cc glass beaker with an inside diameter of approx. 95mm(3.5in.).
3. Place it at the center of the tray and set it in a cavity.
4. Close the door and operate the oven.
5. Measure the leakage by using Microwave Energy Survey Meter with dual ranges, set to 2450MHz.
 - 1) Measured radiation leakage must not exceed the value prescribed below. Leakage for a fully assembled oven with door normally closed must be less than $4\text{mW}/\text{cm}^2$.
 - 2) When measuring the leakage, always use the 5cm(2in.) space cone with probe. Hold the probe perpendicular to the cabinet and door. Place the space cone of the probe on the door, cabinet, door seem, door viewing screen, the exhaust air vents and the suction air vents.
 - 3) Measuring should be in a counter-clockwise direction at a rate of 1 in./sec. If the leakage of the cabinet door is unknown, move the probe more slowly.
 - 4) When measuring near a corner of the door, keep the probe perpendicular to the areas making sure the probe end at the base of the cone does not get closer than 2 in. from any metal. If it does not, erroneous reading may result.



3. COMPONENT TEST PROCEDURE

- High voltage is present at the high voltage terminal of the high voltage transformer during any cooking cycle.
- It is neither necessary nor advisable to attempt measurement of the high voltage.
- Before touching any oven components or wiring, always unplug the oven from its power source and discharge the capacitor.

1. High voltage transformer

- (1) Remove connections from the transformer terminals and check continuity.
- (2) Normal readings should be as follows:
 - Secondary winding.....Approx. $110\ \Omega \pm 10\%$
 - Filament winding.....Approx. $0\ \Omega$
 - Primary windingApprox. $1\ \Omega$

2. High voltage capacitor

- (1) Check continuity of capacitor with meter on the highest OHM scale.
- (2) A normal capacitor will show continuity for a short time, and then indicate $10M\Omega$ once the capacitor is charged.
- (3) A shorted capacitor will show continuous continuity.
- (4) An open capacitor will show constant $10M\Omega$
- (5) Resistance between each terminal and chassis should be infinite.

3. High voltage diode

- (1) Isolate the diode from the circuit by disconnecting the leads.
- (2) With the ohmmeter set on the highest resistance scale measure the resistance across the diode terminals.
 - Reverse the meter leads and again observe the resistance reading.
 - Meter with 6V, 9V or higher voltage batteries should be used to check the front-back resistance of the diode, otherwise an infinite resistance may be read in both directions.
 - A normal diode's resistance will be infinite in one direction and several hundred $K\Omega$ in the other direction.

4. Magnetron

For complete magnetron diagnosis, refer to "Measurement of the Microwave Power Output".

Continuity checks can only indicate an open filament or a shorted magnetron.

To diagnose for an open filament or a shorted magnetron.

- (1) Isolate magnetron from the circuit by disconnecting the leads.
- (2) A continuity check across magnetron filament terminals should indicate $0.1\ \Omega$ or less.
- (3) A continuity check between each filament terminal and magnetron case should read open.

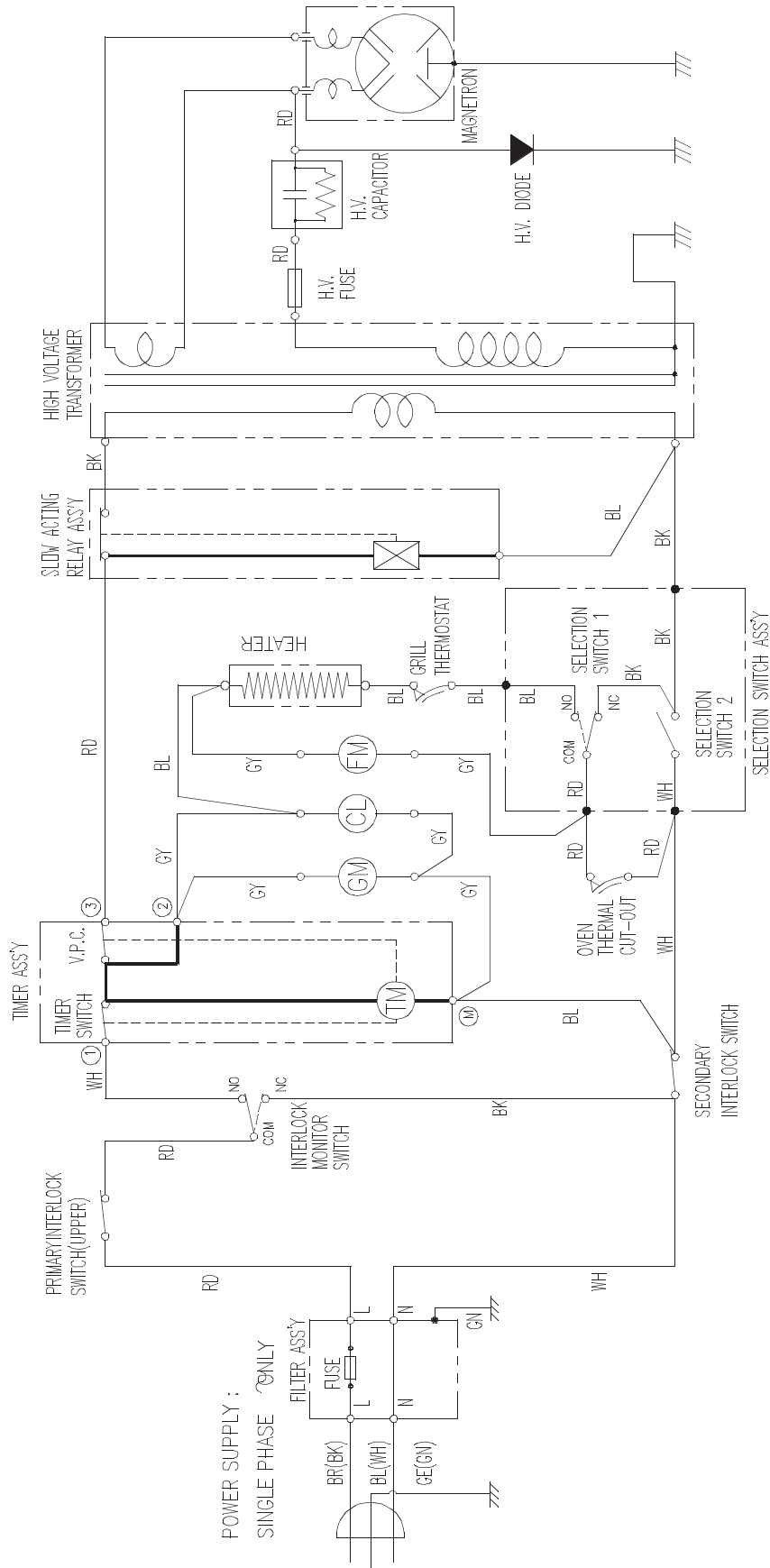
5. Fuse

If the fuse in the primary and monitor switch circuit is blown when the door is opened, check the primary and monitor switch before replacing the blown fuse.

In case the fuse is blown by an improper switch operation, replace the defective switch and fuse at the same time.

Replace just the fuse if the switches operate normally.

WIRING DIAGRAM



NOTE : RD : RED
WH : WHITE
BK : BLACK
GN : GREEN
BR : BROWN

OR : ORANGE
BL : BLUE
GY : GRAY
GE : GREEN/YELLOW

CL : CAVITY LAMP
FM : FAN(BLOWER) MOTOR
GM : GEARED MOTOR
TM : TIMER MOTOR
V.P.C.: VARIABLE POWER CONTROLLER

[CONDITION]
SELECTION : MICROWAVE
DOOR : CLOSED
TIMER : ON
V.P.C. : HIGH

EXPLODED VIEW AND PARTS LIST

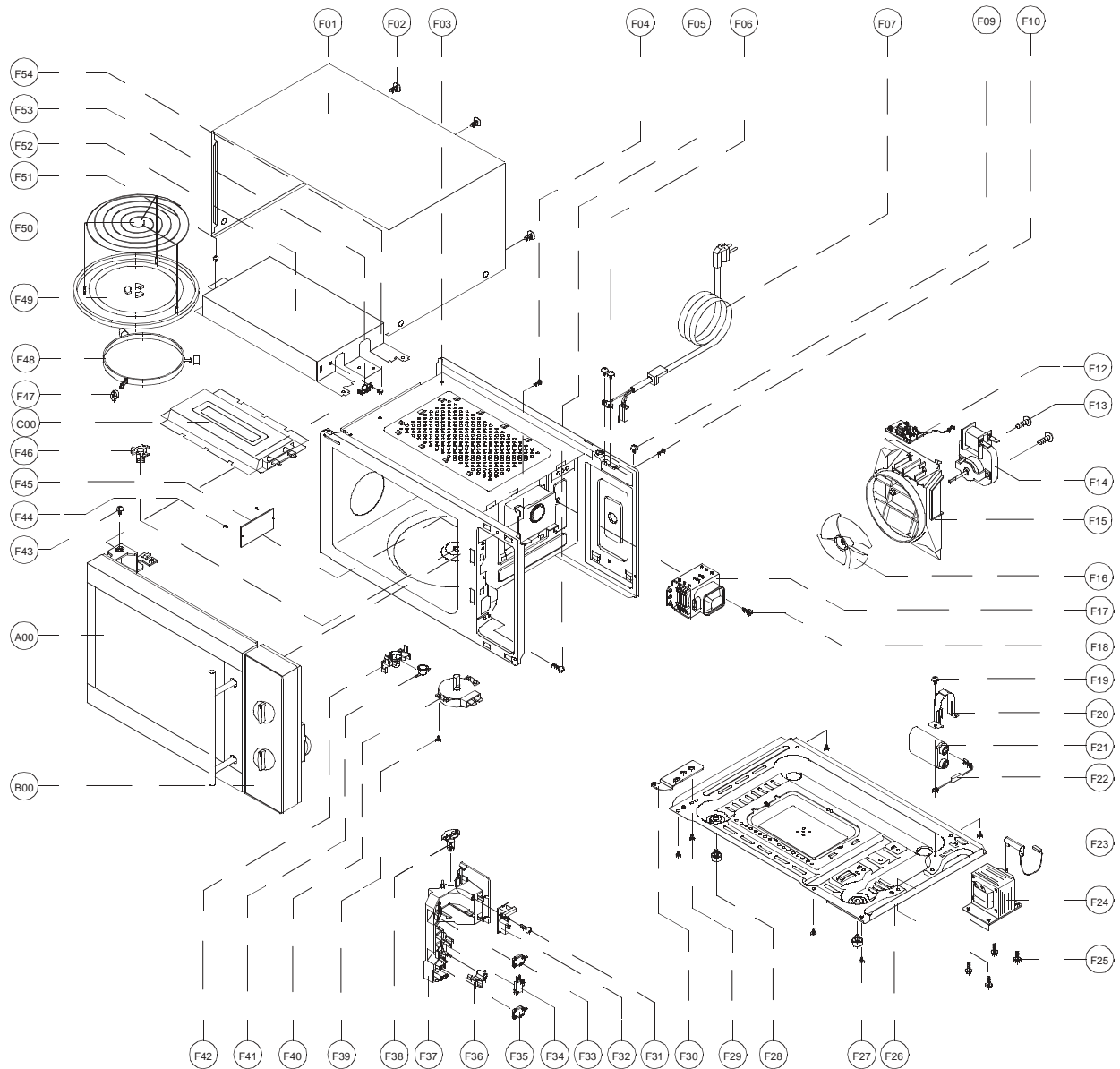
1. DOOR ASSEMBLY

Refer to Disassembly and assembly

2. CONTROL PANEL ASSEMBLY

Refer to Disassembly and assembly

3. TOTAL ASSEMBLY



✓ **Caution** : In this Manual, some parts can be changed for improving, their performance without notice in the parts list. So, if you need the latest parts information, please refer to PPL(Parts Price List) in Service Information Center (<http://svc.dwe.co.kr>).

REF NO.	PART CODE	PART NAME	DESCRIPTION	Q'TY	REMARK
A00	3511729200	DOOR AS	KOR-634R5SSC		
B00	351673800	CONTROL-PANEL AS	KOR-63470S		
C00	3512803600	HEATER *T AS	KOG-57350S		
F01	3510805300	CABINET AS	PCM		
F02	7112401011	SCREW TAPPING	T1 TRS 4*10 MFZN		
F03	3516121000	CAVITY AS	KQG-63475SSC		
F04	7122401211	SCREW TAPPING	T2S TRS 4*12 MFZN		
F05	7122401211	SCREW TAPPING	T2S TRS 4*12 MFZN		
F06	7112401011	SCREW TAPPING	T1 TRS 4*10 MFZN		
F07	35113A5QJ5	CORD POWER AS	3X1.5 80X80 120-RTML 1.4M		
F09	7112401011	SCREW TAPPING	T1 TRS 4*10 MFZN		
F10	7122401211	SCREW TAPPING	T2S TRS 4*12 MFZN		
F12	3518606100	NOISE-FILTER	DWLF-M13		
F13	7121403011	SCREW TAPPING	T2S PAN 4X30 MFZN		
F14	3963512310	MOTOR SHADED POLE	230V 20W MW10CA-MC2		
F15	3512517000	GUIDE WIND	PP		
F16	3511800300	FAN	PP+30% GLASS		
F17	3518003700	MAGNETRON	2M218JFL 6CF		
F18	3516004000	SPECIAL SCREW	T2 BOLT FLANGE 5X12 DACRO		
F19	7272400811	SCREW TAPTITE	TT3 TRS 4X8 MFZN		
F20	3513003200	HOLDER HV CAPACITOR	SECC T0.6		
F21	3518302201	CAPACITOR HV	2100VAC 0.98uF #187 75MM		
F22	3518400900	DIODE HV AS	HVR - 1X- 30B #187		
F23	3518701100	FUSE HV	5KV 0.55A HV-41A55-02		
F24	3518122310	TRANS HV	1S58B (LA00)		
F25	3516003700	SPECIAL SCREW	TT3 HEX 4X8 FLG MFZN		
F26	3510311700	BASE	SBHG T0.7		
F27	7112401011	SCREW TAPPING	T1 TRS 4*10 MFZN		
F28	3512100900	FOOT	PP DASF-130		
F29	7272400811	SCREW TAPTITE	TT3 TRS 4X8 MFZN		
F30	3515201101	STOPPER HINGE *U	SCP-1 T2.5		
F31	7122401211	SCREW TAPPING	T2S 4*12 MFZN		
F32	3518570400	SWITCH S/A RELAY	DWSR-1		
F33	4415A17352	SW MICRO	VP-533A-OF SPNO #187 200G		
F34	4415A66910	SW MICRO	VP-531A-OF/SZM-V16-FA-61		
F35	4415A17352	SW MICRO	VP-533A-OF SPNO #187 200G		
F36	3513702610	LEVER LOCK	POM		

✓ **Caution** : In this Manual, some parts can be changed for improving, their performance without notice in the parts list. So, if you need the latest parts information, please refer to PPL(Parts Price List) in Service Information Center (<http://svc.dwe.co.kr>).

REF NO.	PART CODE	PART NAME	DESCRIPTION	Q'TY	REMARK
F37	3513811710	LOCK	POM BLACK		
F38	3513601600	LAMP	BL 240V 25W T25 C7A H187		
F39	7121400611	SCREW TAPPING	T2S PAN 4X6 MFZN		
F40	3955310100	MOTOR SYNCRO	220V 2.5 ㄱ GM - 16 - 24FD12		
F41	3518905300	THERMOSTAT	FF:75 ON:65 H #187 NB		
F42	3513003410	HOLDER THERMOSTAT	PP (BLACK)		
F43	7272400811	SCREW TAPTITE	TT3 TRS 4X8 MFZN		
F44	4078502031	BUTTON LOCKING	PP HONAM A353		
F45	3511405100	COVER WAVE GUIDE	MICA T0.35		
F46	3517400620	COUPLER	XAREC		
*	3512517500	GUIDE ROLLER AS	KOR-63150S		
F47	3514700710	ROLLER	TEFLON		
F48	3512517300	GUIDE ROLLER	PP 5113MF6 A353B		
F49	3517203600	TRAY	GLASS		
F50	3517206900	TRAY RACK AS	KOG-37150S 110MM		
F51	7112401011	SCREW TAPPING	T1 TRS 4*10 MFZN		
F52	3511408200	COVER INSULATOR *T	SBHG T0.5		
F53	3518905300	THERMOSTAT	OFF:75 ON:65 H #187 NB		
F54	7121300611	SCREW TAPPING	T2S PAN 3X6 MFZN		



DAEWOO ELECTRONICS CORP.

1-2, Jeo-dong 1(il)-ga, Jung-gu, Seoul, Korea

C.P.O. BOX 8003 SEOUL, KOREA

TELEX: DWELEC K28177-8

CABLE: "DAEWOOELEC"

PRINTED DATE: Jun. 2010

S/M NO. :

ABOUT THIS MANUAL

VISION CREATIVE, INC.

서울 종로구 통의동
6번지 이룸빌딩 4층

담	당	이재혁 님	
MODEL		KQG-63475SSC (S/M)	
접	수	2010.06.09	
일	정	1 차	
		2 차	
		3 차	
		4 차	
		5 차	
제	판	한	인 쇄
규	격		
MEMO 총 28p 10.06.09-전체신규 28p 10.06.10-7p, 10p, 12p, 16p, 24p, 25p, 26p 수정_ 신규 7p			

연락처

VISION 담당 방 문 수

TEL: 730-0660 FAX: 730-3788