

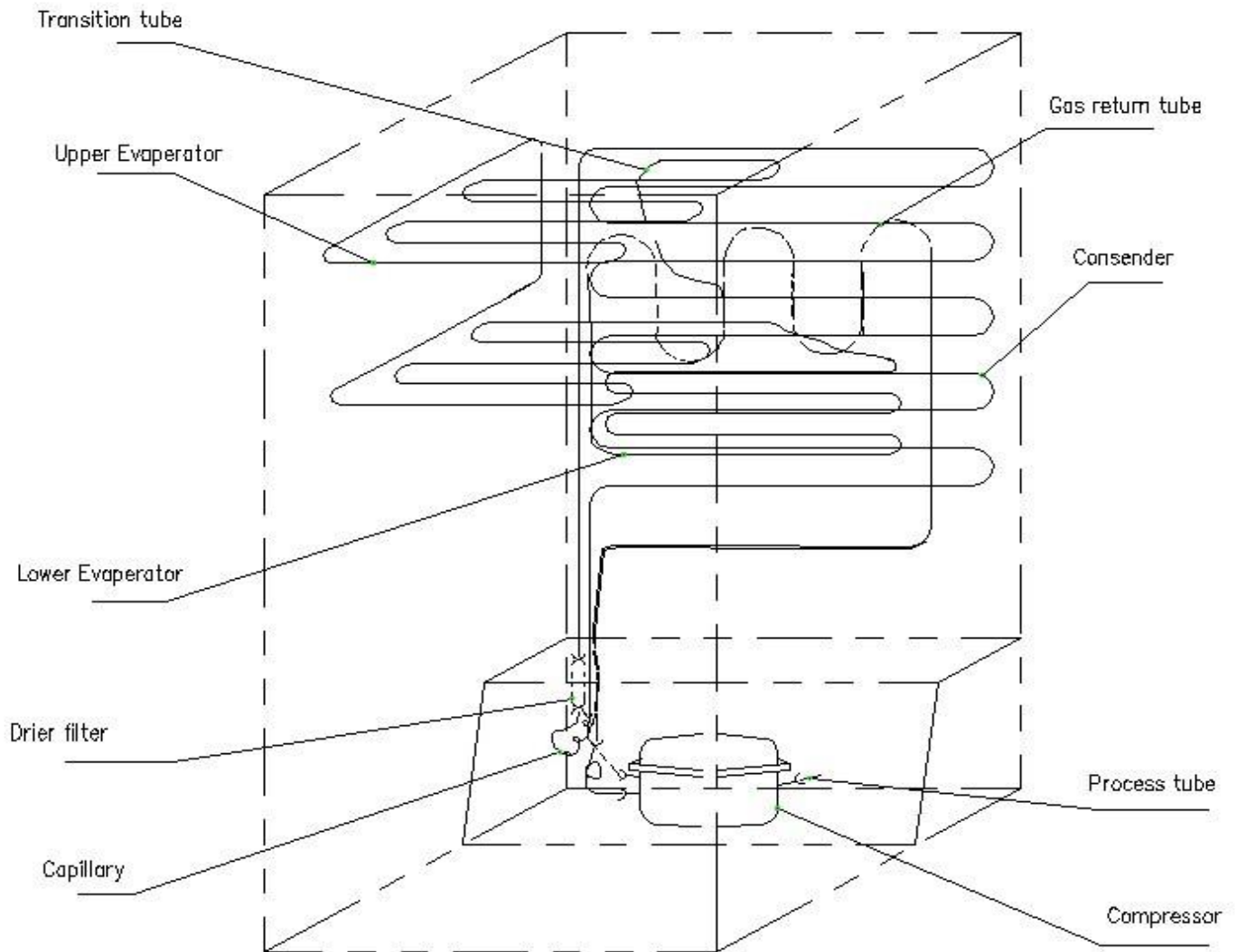
Service Manual

Models: FN-16VA2

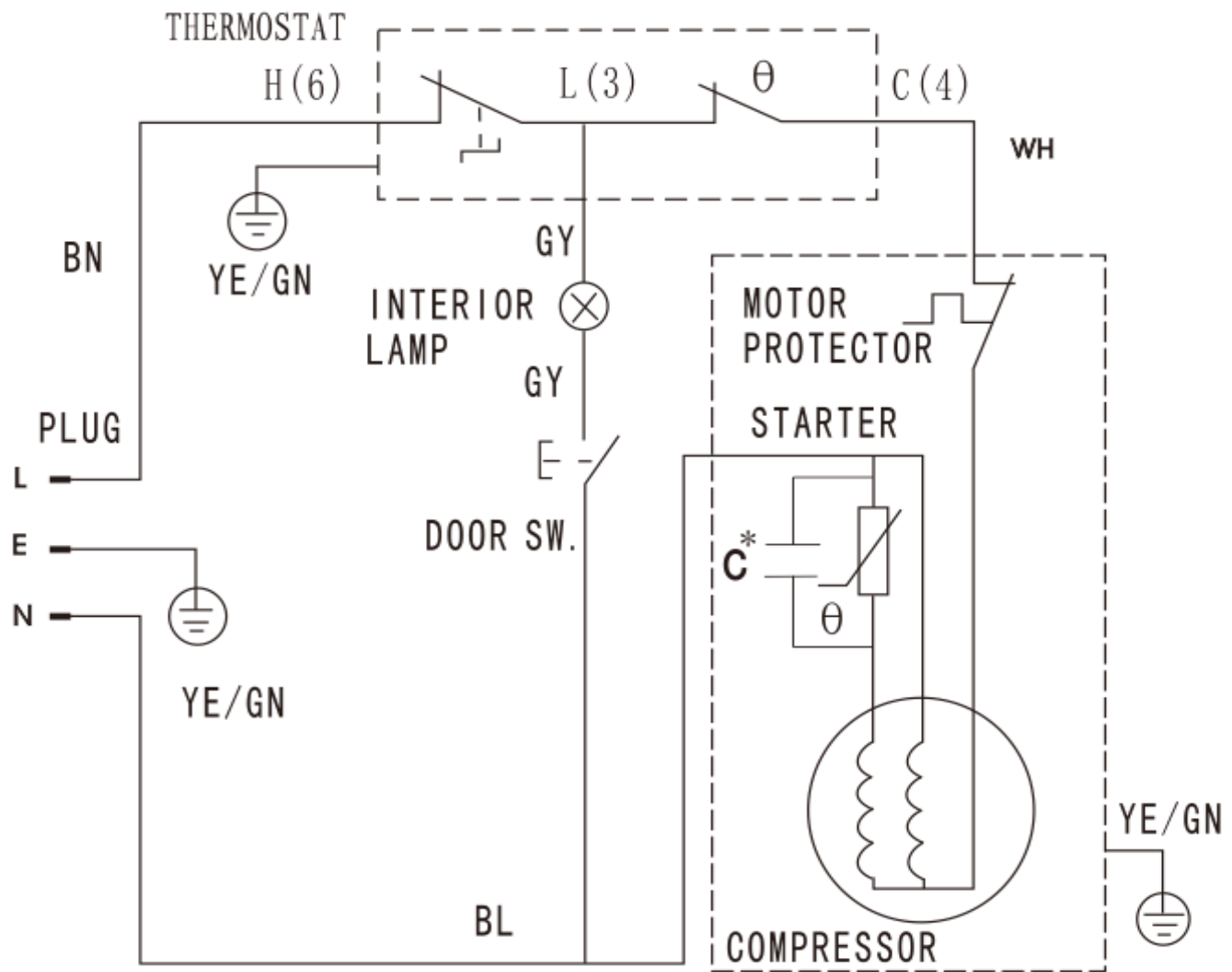
Features

- **Energy efficiency**
- **Micro foam technology**
- **Low noise operation**
- **Thick insulation for energy efficiency**
- **Latest No. 2 micro-biological technology**

The cooling system



The electrical diagram



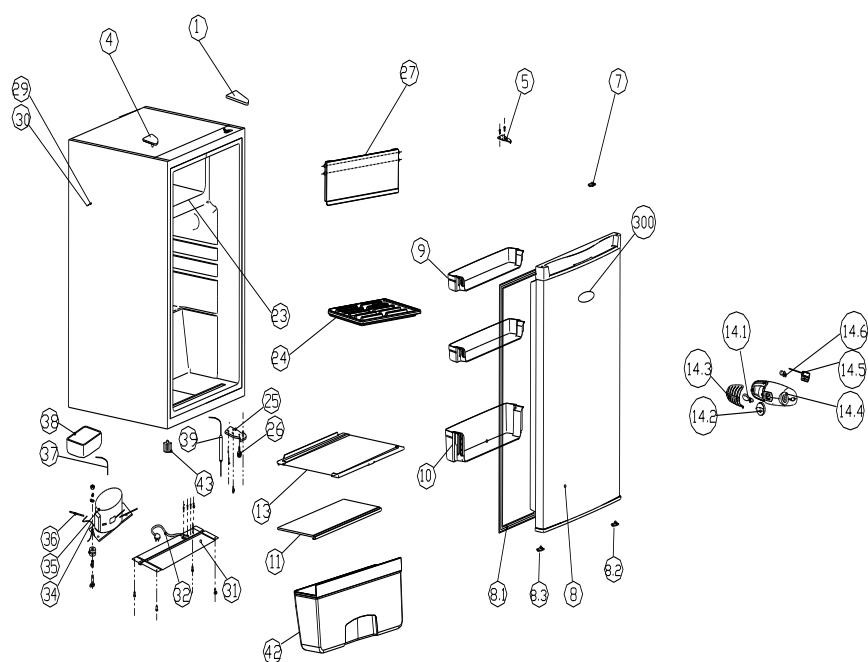
C*: The capacitor is optional according to different compressor model

Trouble shooting guide

No	Problem	Possible Cause	What To Do
1	The refrigerator does not get cold at all.	Not plugged in.	Plug in
		Is the circuit breaker tripped or blown fuse?	Put on the home circuit breaker or change the new fuse.
		Is the refrigerator temperature control setted at "off"?	Set the temperature control knob at "4".
2	The refrigerator does not get cold enough.	Is the refrigerator control dialed set to correct location?	Set it to a colder temperature.
		Is the refrigerator placed in direct sunlight or closely a heat source?	Move the refrigerator to proper location.
		Is the door closed completely?	Close the door completely.
		Is the door opened too frequently or too long?	Open the door less often,
		Does the door gasket seal properly?	Make the gasket sealing properly.
		Is the refrigerator overloaded?	Load less food into it.
3	The food in the refrigerator is frozen	Is the refrigerator control dialed set to correct location?	Set it to a warmer temperature.
		Is the ambient temperature too low?	
4	Two sides of the cabinet are hot: condensation occurs.	Hot-pipe is installed in two sides of refrigerator. That makes refrigerator's temperture lowquckly and save the power	Normal state.
		Condensation can occur when you leave the door open for a long time.	Normal state.
5	Vibrations	The refrigerator is not level and firm.	Place the refrigerator in a level location.
6	The refrigerator is noisy.	Water bubbling comes from the refrigerant circulating of the refrigerator.	Normal state.
		Contraction and expansion of the insulation inside the walls may cause popping and cracking.	Normal state.
		Is the refrigerator unstable or touching the wall?	Keep the refrigerator leaving the wall.
		Is the refrigerator not level?	Adjust the refrigerator leveling.
7	The door can not close properly.	Were the doors not properly installed?	Assure the doors installed properly.
		Is the door gasket dirty and distortion?	Cleaning and flatting the door gasket.
8	The lamp does not work.	Has the home circuit breaker or fuse tripped?	Put on the home circuit breaker or change the new fuse.
		Is the refrigerator's door close completely?	Assure the door close completely.
9	Operating for all long time.	Is the ambient temperature too high?	
		Is the temperature controller in freezer chamber or in refrigerator chamber is set at "strong" position	Sets it at a right position.
		Too much food is loaded into the refrigerator and insufficient spaces for airflow.	Load less food into the refrigerator.

		The door were not closed completely or the gasket not sealing enough.	Close the doors completely or make the gasket sealing enough.
		Open the door too frequently.	Decrease the open-door times.

Exploded view



FN-16VA2

Parts list

No.	Homa Code	Description of Spare Part	Quantity
1	20122080090	Door hinge cover	1
4	20122080033	Door hinge screw hole cover	1
5	3031400148	Upper door hinge,right	1
7	2501100002	Door switch	1
8	20101050024	Door	1
8.1	3020400007	Door gasket	1
8.2	20122090103	Right aid-closer,lower door	1
8.3	20122090103	Left aid-closer,lower door	1
9	20122050179	Upper Rack	2
10	20122050180	Lower Rack	1
11	2106120261	Cover of crisper drawer	1
13	2106100271	Shelf of refrigerator chamber	1
14.1	3050500008	Lamp bulb	1
14.2	2207100001	Thermostat knob	1
14.3	20122010050	Lamp cover	1
14.4	20122010013	Thermostat cover	1
14.5	3040200018	Thermostat	1
14.6	3050600003	Lamp holder	1
23	3040300002	Evaporator assembly	1
24	20122990052	Water pan	1
25	3031400067	Lower door hinge	1
26	20122990001	Short adjust leg	1
27	20122090204	Freezer Door	1
29	20122990192	Cover of temperature sensor capillary	1
30	20122990189	Jacket of temperature sensor capillary	1
31	3039900125	Compressor support base	1
32	3050100083	Power supply cord plug	1
34	3050200094	Earthing wire of compressor	1
35	3040100092	Compressor	1
36	3040600005	Process tube	1
37	20114070006	Connecting tube	1
39	3040500009	Drier filter	1
42	2207400499	Crisper drawer	1
43	20122990016	Long adjust leg	1
300	2700500282	Trade mark	1
301	3070102463	Carton	1