

DAEWOO

DESPIECE

Refrigerator

MODEL : FL-380VP

✓ Caution :

In this Manual, some parts can be changed for improving, their performance without notice in the parts list. So, if you need the latest parts information, please refer to PPL(Parts Price List) in Service Information Center (<http://svc.dwe.co.kr>).

DAEWOO ELECTRONICS Corp.

[http : //svc.dwe.co.kr](http://svc.dwe.co.kr)

Mar. 2004

Service manual

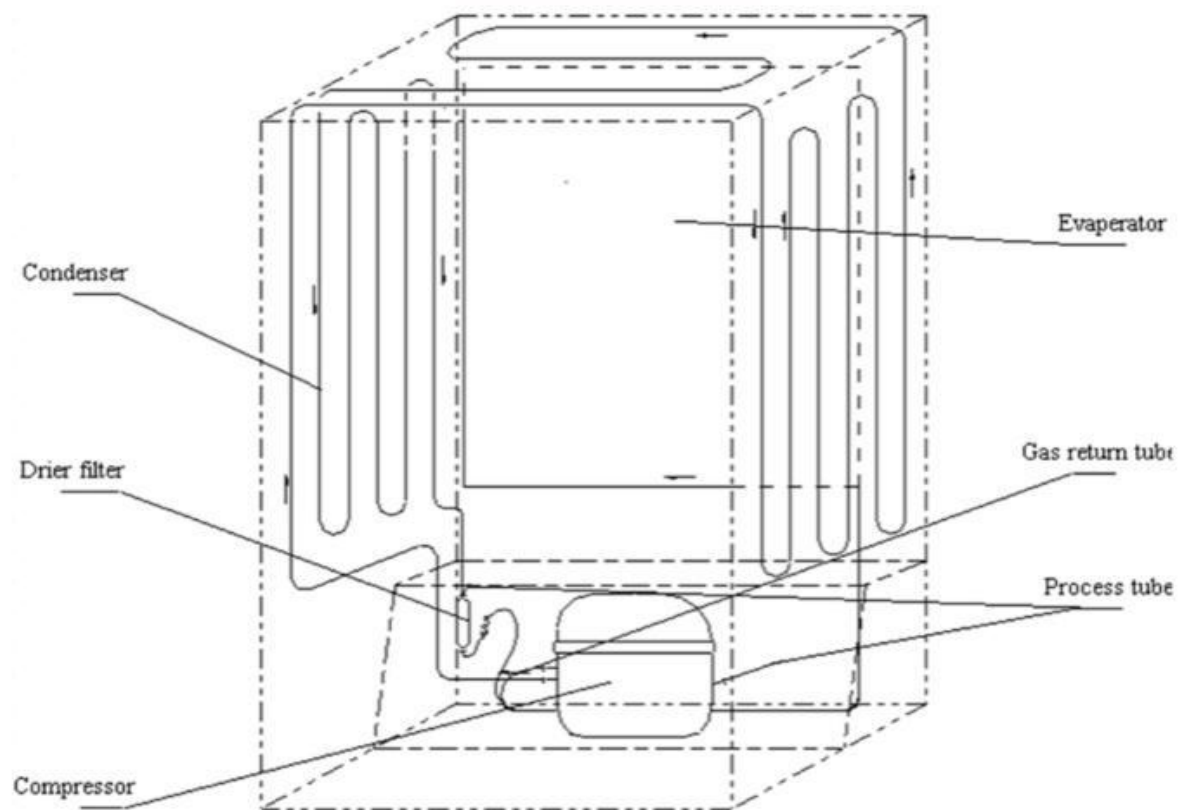
60CM Fridge

Model:FL-380VP

Contents

- 1 Cover
- 2 The cooling system
- 3 The electrical diagram
- 4 Trouble shooting guide
- 5 Exploded view
- 6 Parts list

The cooling system

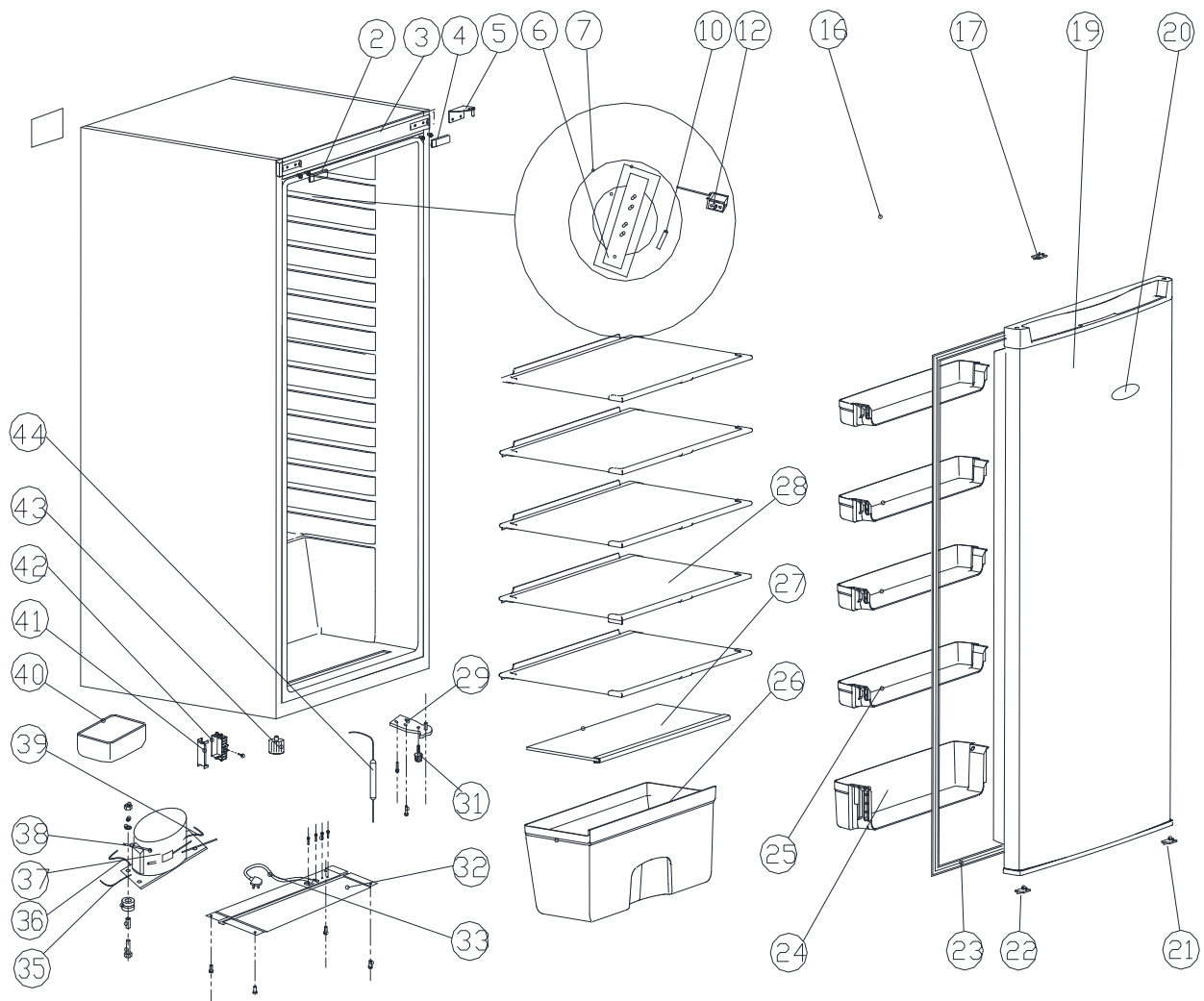


Trouble shooting guide

No	Problem	Possible Cause	What To Do
1	The refrigerator does not get cold at all.	Not plugged in.	Plug in
		Is the circuit breaker tripped or blown fuse?	Put on the home circuit breaker or change the new fuse.
		Is the refrigerator temperature control setted at 0ffö?	Set the temperature control knob at "4".
2	The refrigerator does not get cold enough.	Is the refrigerator control dialed set to correct location?	Set it to a colder temperature.
		Is the refrigerator placed in direct sunlight or closely a heat source?	Move the refrigerator to proper location.
		Is the door closed completely?	Close the door completely.
		Is the door opened too frequently or too long?	Open the door less often,
		Does the door gasket seal properly?	Make the gasket sealing properly.
		Is the refrigerator overloaded?	Load less food into it.
3	The food in the refrigerator is frozen	Is the refrigerator control dialed set to correct location?	Set it to a warmer temperature.
		Is the ambient temperature too low?	
4	Two sides of the cabinet are hot: condensation occurs.	Hot-pipe is installed in two sides of refrigerator. That makes refrigerator's temperture lowquckly and save the power	Normal state.
		Condensation can occur when you leave the door open for a long time.	Normal state.
5	Vibrations	The refrigerator is not level and firm.	Place the refrigerator in a level location.
6	The refrigerator is noisy.	Water bubbling comes from the refrigerant circulating of the refrigerator.	Normal state.
		Contraction and expansion of the insulation inside the walls may cause popping and cracking.	Normal state.
		Is the refrigerator unstable or touching the wall?	Keep the refrigerator leaving the wall.
		Is the refrigerator not level?	Adjust the refrigerator leveling.
7	The door can not close properly.	Were the doors not properly installed?	Assure the doors installed properly.
		Is the door gasket dirty and distortion?	Cleaning and flatting the door gasket.
8	The lamp does not work.	Has the home circuit breaker or fuse tripped?	Put on the home circuit breaker or change the new fuse.
		Is the refrigerator's door close completely?	Assure the door close completely.
9	Operating for all long time.	Is the ambient temperature too high?	
		Is the temperature controller in freezer chamber or in refrigerator chamber is set at 0strongö position	Sets it at a right position.
		Too much food is loaded into the refrigerator and insufficient spaces for airflow.	Load less food into the refrigerator.

		The door were not closed completely or the gasket not sealing enough.	Close the doors completely or make the gasket sealing enough.
		Open the door too frequently.	Decrease the open-door times.

Exploded view



No.	Parts code	Description of Spare Part
2	20014867	Top front decorative cover
3	20014868	Decorative front
4	20014866	Right door hinge cover
5	20022078	Upper Hinge Assembly
6	20050278	LED light
7	20014165	Lamp Cover
10	20061654	Thermostat
12	20015505	Thermostat Knob
16	20015886	Top cover
17	20050016	Door switch
19	20101080075	Door
20		Trade mark
22	20023060	Lower door right aid-closer
21	20023061	Lower door left aid-closer
23	20015103	Door gasket
24	20014785	Lower Rack(ice blue)
25	20014784	Upper rack (ice blue)
26	20014330	Crisper drawer(ice blue)
27	10202760	Crisper cover
28	10202759	Shelf
29	20022157	Lower door hinge
31	20010123	Short adjust foot
32	10202768	Compressor base support
33		Power supply cord with plug
35	20050009	Compressor connecting wire
36	20050008	Compressor earthing wire
37	20061054	Compressor
38	20061718	Process tube
39	20060046	Connecting tube (short)
40	20012807	Drain pan
41	20014438	Base of wire box
42	20014437	Wire box
43	20014361	Long adjust foot
44	20060086	Drier filter (for R600a)
46		Carton
		Totally Quantity: