

DAEWOO

DESPIECE

Refrigerator

MODEL : FF-311VP

✓ Caution :

In this Manual, some parts can be changed for improving, their performance without notice in the parts list. So, if you need the latest parts information, please refer to PPL(Parts Price List) in Service Information Center (<http://svc.dwe.co.kr>).

DAEWOO ELECTRONICS Corp.

[http : //svc.dwe.co.kr](http://svc.dwe.co.kr)

Mar. 2004

Serves manual

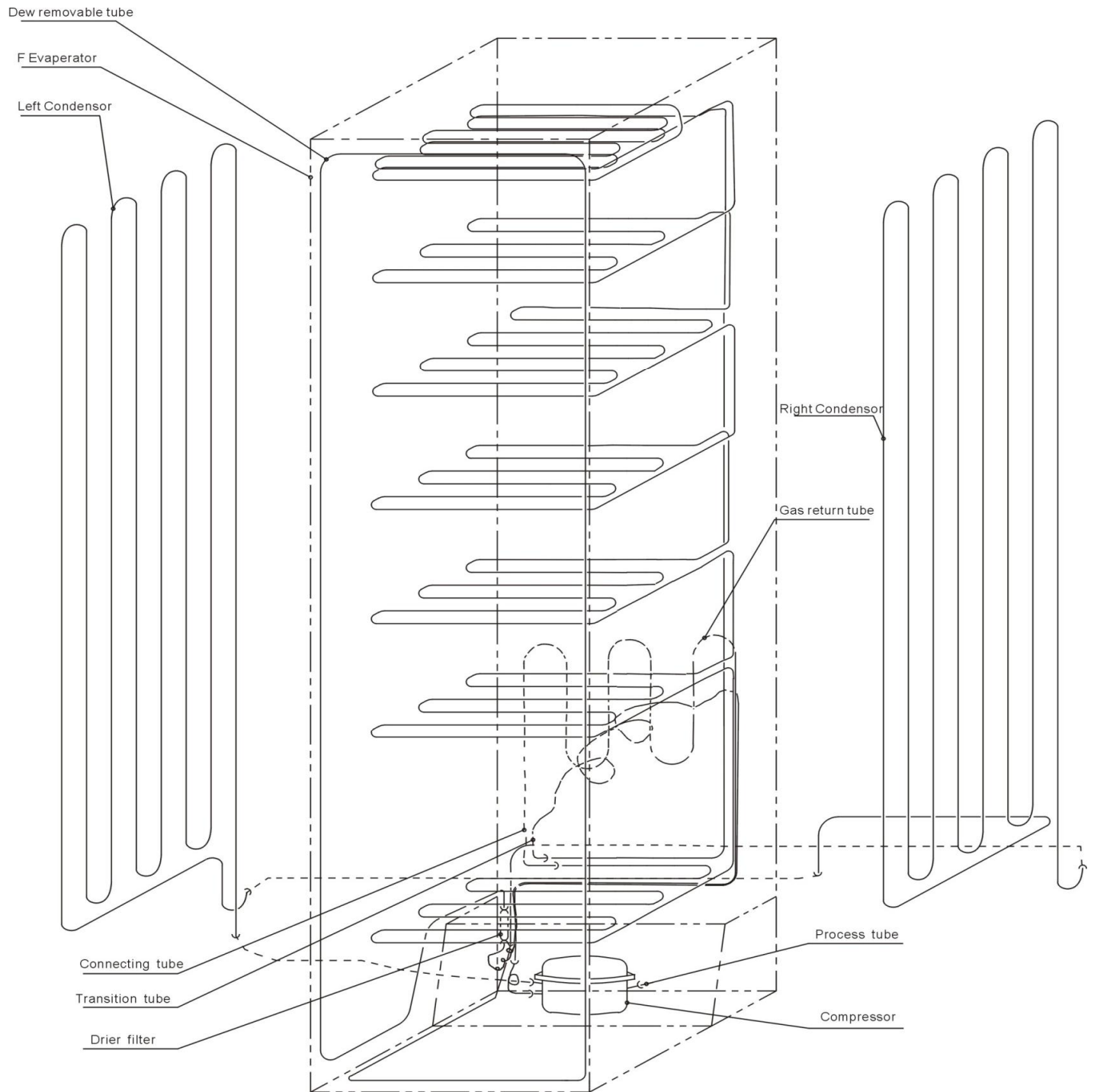
60CM TT Freezer

Model:FF-311VP

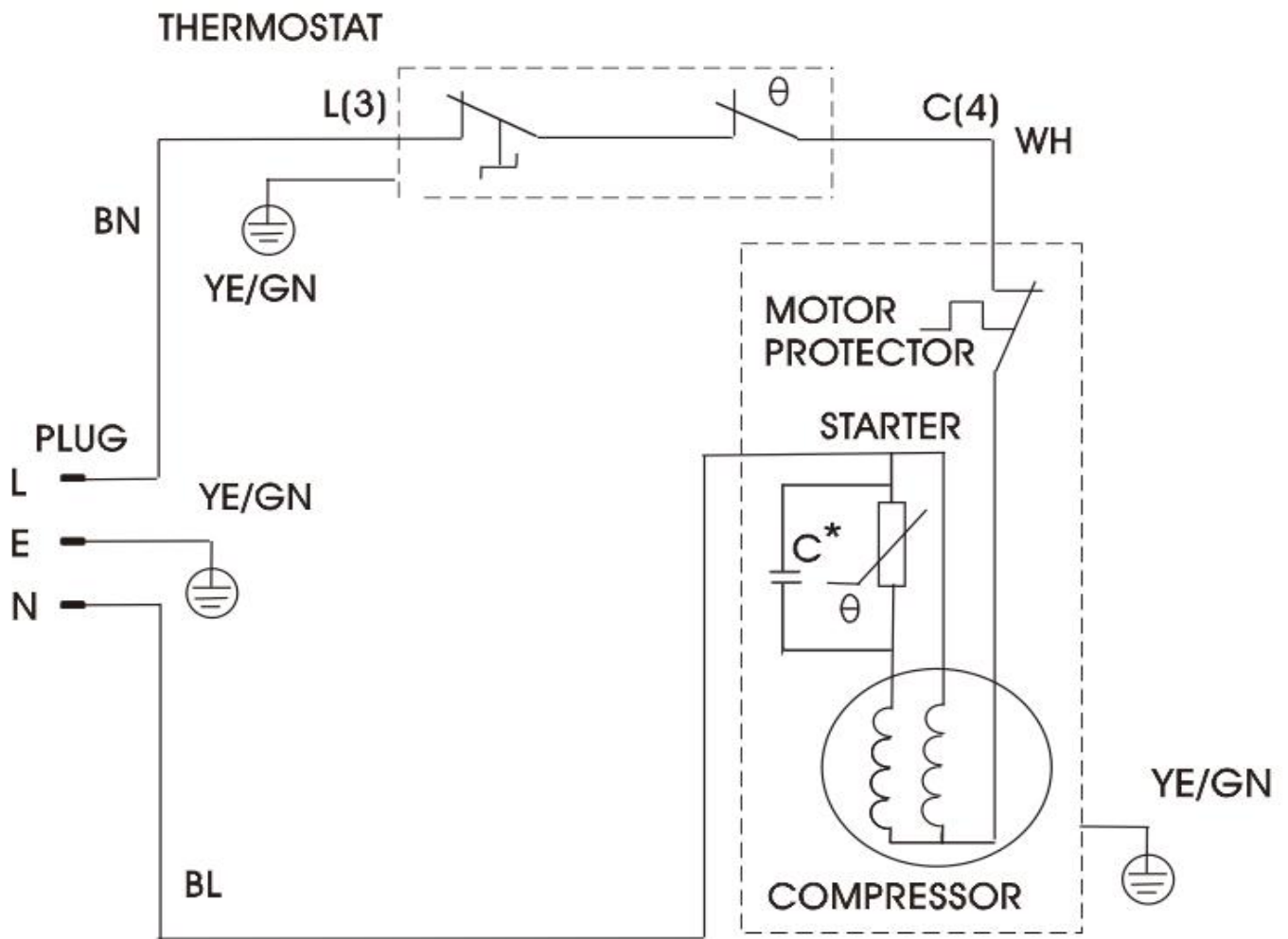
Contents

- 1 Cover
- 2 The cooling system
- 3 The electrical diagram
- 4 Trouble shooting guide
- 5 Exploded view
- 6 Parts list

The cooling system



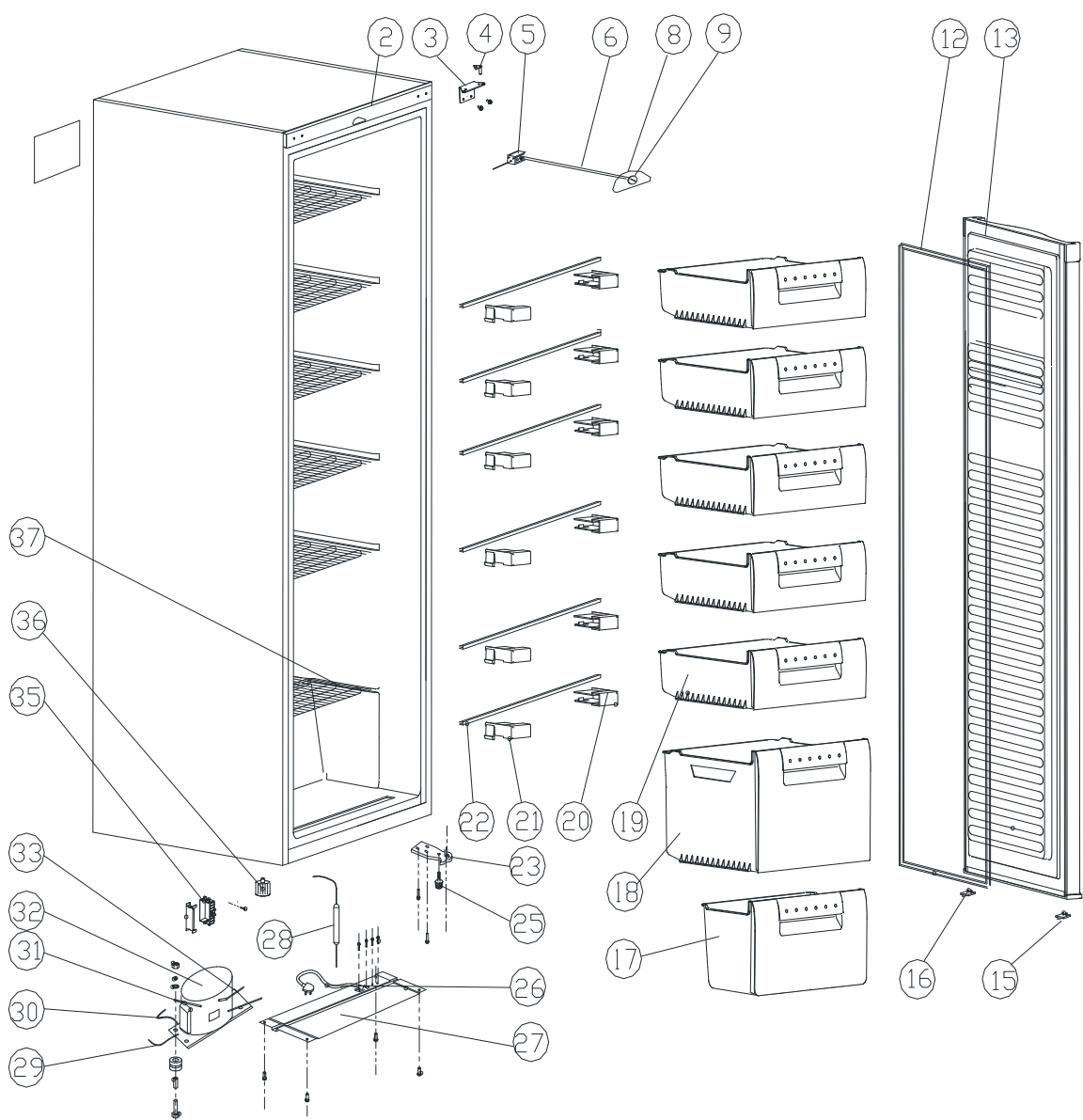
The electrical diagram



Trouble shooting guide

No	Problem	Possible Cause	What To Do
1	The refrigerator does not get cold at all.	Not plugged in.	Plug in
		Is the circuit breaker tripped or blown fuse?	Put on the home circuit breaker or change the new fuse.
		Is the refrigerator temperature control setted at 0ffö?	Set the temperature control knob at "4".
2	The refrigerator does not get cold enough.	Is the refrigerator control dialed set to correct location?	Set it to a colder temperature.
		Is the refrigerator placed in direct sunlight or closely a heat source?	Move the refrigerator to proper location.
		Is the door closed completely?	Close the door completely.
		Is the door opened too frequently or too long?	Open the door less often,
		Does the door gasket seal properly?	Make the gasket sealing properly.
		Is the refrigerator overloaded?	Load less food into it.
3	The food in the refrigerator is frozen	Is the refrigerator control dialed set to correct location?	Set it to a warmer temperature.
		Is the ambient temperature too low?	
4	Two sides of the cabinet are hot: condensation occurs.	Hot-pipe is installed in two sides of refrigerator. That makes refrigerator's temperture lowquckly and save the power	Normal state.
		Condensation can occur when you leave the door open for a long time.	Normal state.
5	Vibrations	The refrigerator is not level and firm.	Place the refrigerator in a level location.
6	The refrigerator is noisy.	Water bubbling comes from the refrigerant circulating of the refrigerator.	Normal state.
		Contraction and expansion of the insulation inside the walls may cause popping and cracking.	Normal state.
		Is the refrigerator unstable or touching the wall?	Keep the refrigerator leaving the wall.
		Is the refrigerator not level?	Adjust the refrigerator leveling.
7	The door can not close properly.	Were the doors not properly installed?	Assure the doors installed properly.
		Is the door gasket dirty and distortion?	Cleaning and flatting the door gasket.
8	The lamp does not work.	Has the home circuit breaker or fuse tripped?	Put on the home circuit breaker or change the new fuse.
		Is the refrigerator's door close completely?	Assure the door close completely.
9	Operating for all long time.	Is the ambient temperature too high?	
		Is the temperature controller in freezer chamber or in refrigerator chamber is set at 0strongö position	Sets it at a right position.
		Too much food is loaded into the refrigerator and insufficient spaces for airflow.	Load less food into the refrigerator.

Exploded view



FF-311VP Parts list

No.	Parts code	Description of Spare Part
2		Decorative front
3	20022129	Upper Hinge base Assembly
4	20022081	Upper Hinge bin Assembly
5	20060641	Thermostat
6	20015955	Thermostat pole
8	20016038	Thermostat dial
9	20015954	Thermostat knob
12	20015103	Door gasket
13	10024420	Door
15	20023061	Lower door left aid-closer
16	20023060	Lower door right aid-closer
17	20015371	Lower Drawer (ice blue)
18	20015510	Big darwer (ice blue)
19	20015370	Upper darwer (ice blue)
20	20015569	Right retainer
21	20015568	Left retainer
22	20014871	Shelf breaker
23	20022157	Lower door hinge assembly
25	20010123	Short adjust foot
26		Power supply cord with plug
27	10202768	Compressor base support
28	20060086	Drier filter (for R600a)
29	20050008	Earthing wire of compressor
30	20050009	Connecting wire of compressor
31	20061718	Process tube
32	20061265	Compressor
33	20060046	Connecting tube (short)
35	20015478	Wire box
36	20014361	Long adjust foot
37	20061292	Evaporator
38		Carton
		Totally Quantity: