

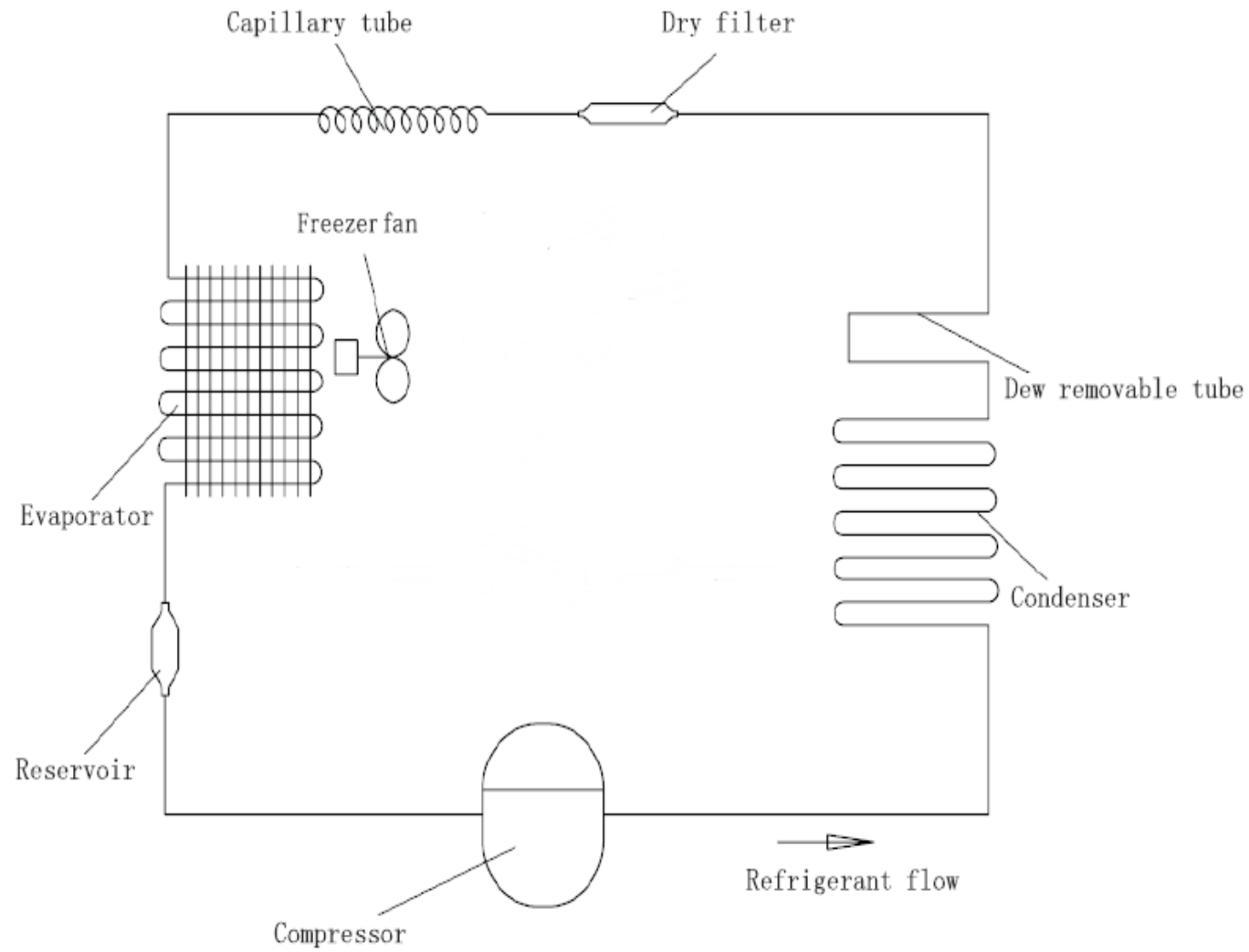
Service Manual

Models: RN-BH2536NPT

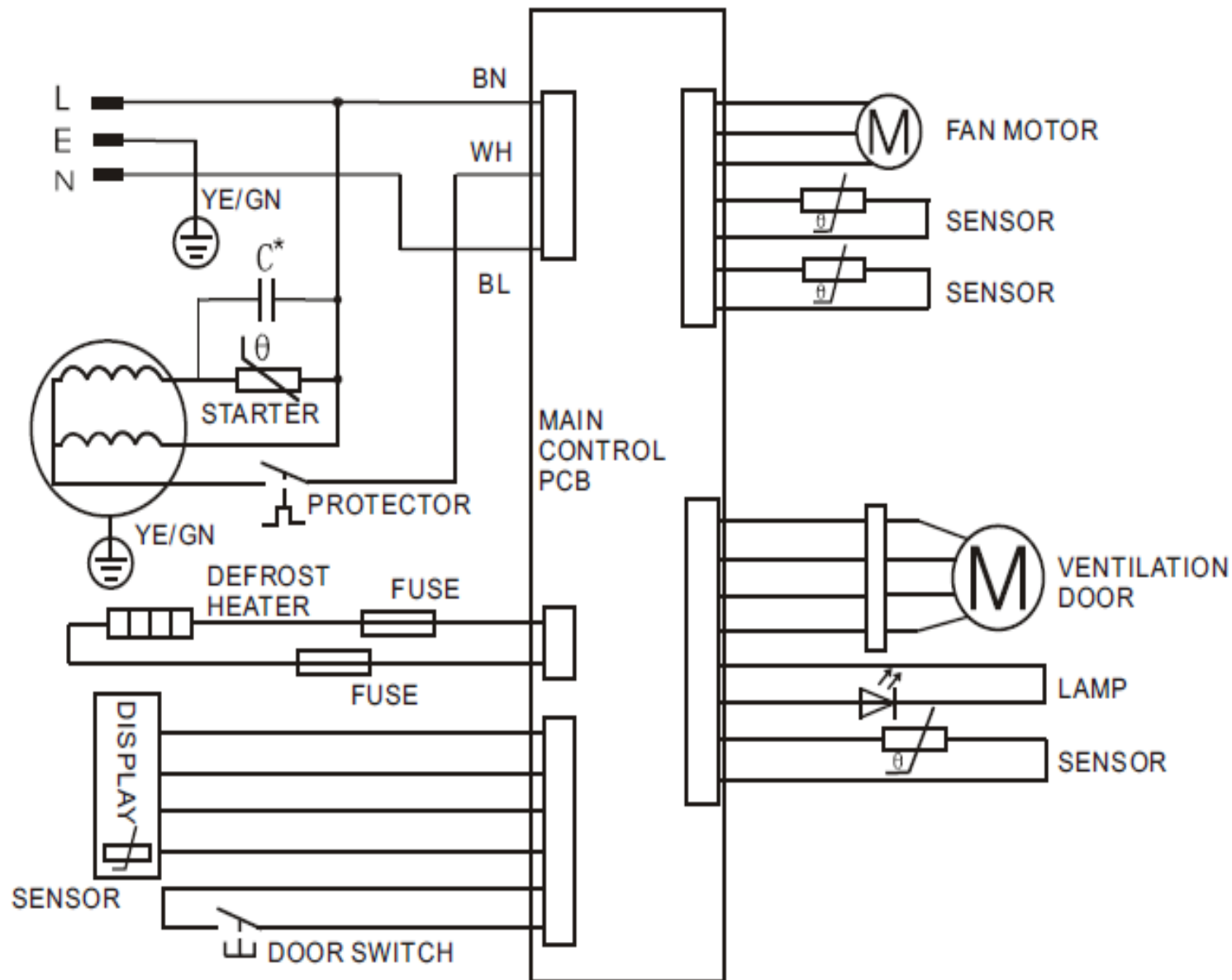
Features

- **Energy efficiency**
- **Micro foam technology**
- **Low noise operation**
- **Thick insulation for energy efficiency**
- **Latest No. 2 micro-biological technology**

The cooling system



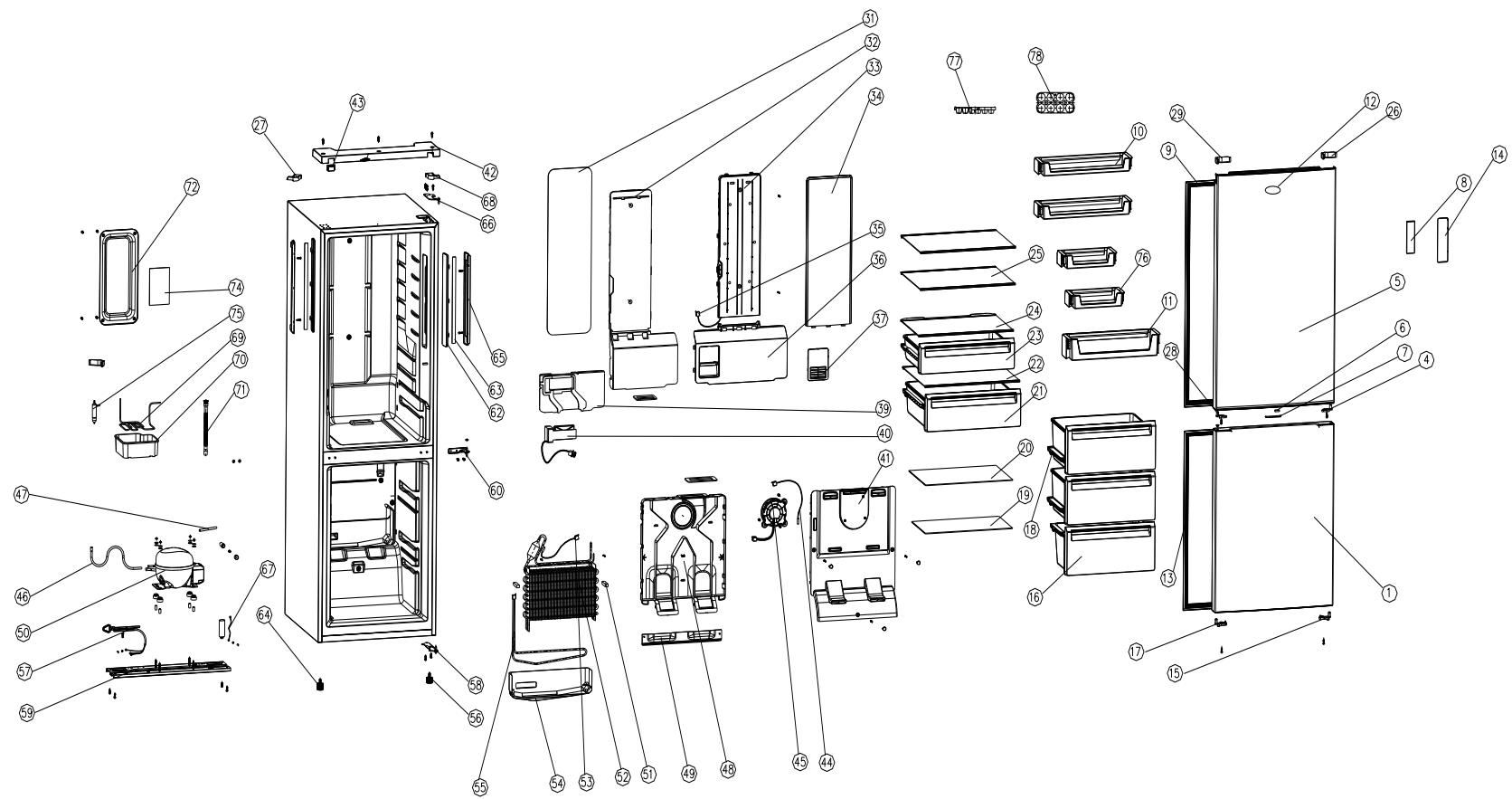
The electrical diagram



Trouble shooting guide

No	Problem	Possible Cause	What To Do
1	Fan no work	the the fan motor is failure and replace it with a new one	open the cover board of air duct in freezer room, check the fan if it no running, then measure the voltage between the red wire and black wire of fan, if the voltage is 12V,the the fan motor is failure and replace it with a new one
2	No defrost.Freezer room temperature no enough cold and refrigerator room OK and open the cover board of are duct and find ice formation on evaporator	the drainpipe contain impurity	disconnect power, and let the ice defrost and inspect the water if it is flow through the drainpipe, if could not flow out, check if it contain impurity and clean the drainpipe
		the sensor failure or PCB failure	check the fuse if it is melt or not. If the fuse is melt, it mean that the sensor failure or PCB failure, need change the sensor or PCB.
		the defrost heater is break or PCB failure	inspecting the CN4 defrost heater two connector.If the heater is OK then it must be PCB failure and change the PCB.
3	the temperature of freezer and refrigerator are no enough cold and the temperature no change by adjusting the potentiometer (thermostat)	the potentiometer failure	inspect the potentiometer (thermostat), and measure the resistance value by adjusting the potentiometer (thermostat), if the resistance value no change by adjusting the potentiometer (thermostat),
		the sensor failure	When the sensor failure and the compressor will be running like this—if the potentiometer (thermostat) setting below 3 position, the compressor will be running 20 minutes and then stop 30 minutes, if the potentiometer (thermostat) setting more than 3 position, the compressor will be running 30 minutes and then stop 20 minutes. If find the compressor work like above situation, it mean the sensor failure and need open the back of refrigerator and change sensor of refrigerator evaporator

4	Compressor no starting	no problem	the time between two starting is shorter than 12min; or refrigerator room temperature is lower than the setting temperature, in this case, it is no problem. You need waiting more time.
		PCB failure	PCB had automatic self-examination: open the cover of PCB at the back of product, plug in power and push the SW101 switch 3 seconds and the PCB begin automatic self-examination program, then the led and compressor and fan and defrost heater all work two second and then stop, all wore one time and then quit automatic self-examination program, and the program will return the original setting. If the automatic self-examination program no work, it mean the PCB failure and need change it
		Compressor wire not right or compressor damage	measure the voltage of compressor input connector, if it is OK then check the starting and relay of compressor, also check the wire if it is OK
6	product no any work	the PCB failure	check the power by multimeter, if the input voltage is 220V-240, but the led, compressor, fan, defrost heater are all no work, it mean the PCB failure and need change a new PCB



RN-BH2536NPT Parts list

No.	Homa code	Description of Spare Part	Quantity
1	2100280102I	Lower door	1
4	2208510008	Right limit block of door	1
5	2100280128I	Upper Door	1
6	3059900042	Door switch,Magnetic control	1
7	2208200056I	Door switch,Magnetic control	1
8	3050300054	Display electric board	1
9	2200200126	Upper door gasket	1
10	2207500027	Upper door Upper balcony	2
11	2207500028	Upper door lower balcony	1
12	2700500474	Trademark	1
13	2200200120	Lower door gasket	1
14	2208100227	Display control board	1
15	2208510010I	Lower door right aid-closer	1
16	2106160305	Lower Drawer	1
17	2208510011I	Lower door left aid-closer	1
18	2106160303	Middle Drawer	2
19	3071300098	Freeze Glass partition,Lower	1
20	3071300097	Freeze Glass partition,Upper	1
21	2106140398	Crisper drawer	1
22	20120030157	Cover of Crisper Box	1
23	20120020220	Freeze zone	1
24	20120030169	Cover of Freeze zone	1
25	20120020219	Shelf of refrigerator chamber	2
26	2208200053I	Decorative Cover of Right Door	1
27	2208200054I	Upper door hinge Cover,Left	1
28	2208510009	Left limit block of door	1
29	2208200055	Decorative Cover of left Door	1
31	2800100003	Adhesive tape of refrigerator wind tunnel parts	1
32	2701000036	Front of refrigerator wind parts	1
33	2208100073	Upper holder of refrigerator wind parts	1
34	2208100144	Decorative block of refrigerator wind parts	1

35	3059900046	Temperature sensor for fridge compartment	1
36	20122990685	Lower holder of refrigerator wind parts	1
37	20122990687	Return air respirator	1
38	2700104879	Carton	1
39	2701000037	Front Cover of refrigerator wind parts	1
40	3059900045	Cold air of refrigerator door parts	1
41	20122990684	Decorative block of Freeze wind parts	1
42	2207200040I	Top Cover,Front	1
43	2208200058I	Top front decorative block	1
44	3059900039	Temperature sensor for freezer compartment	1
45	3059900040	DC centrifugal motor assembly	1
46	20114070006	Connecting tube (short)	1
47	3040600005	Process tube	1
48	20122990683	Freeze wind parts bracket	1
49	3039900346	Water board of freeze wind parts	1
50	2400100016	Compressor	1
51	2701000085	Block gine of Wind bubble	2
52	3040300072	Fin Evaperator	1
53	3059900038	Temperature sensor for defrosting	1
54	3039900301	Fixed slot of heater	1
55	3050700022	drip tray of calorifie	1
56	20122990016	Long adjust leg	1
57	3050100083	Power supply cord plug	1
58	3031400198	Lower door hinge assembly	1
59	2107100002	Compressor Base Support	1
60	3031400040	Middle Door Hinge	1
62	2208100059	Cover of sidelight	2
63	3050400031	LED sidelight	2
64	20122990023	Long leg	1
65	20122010187	Soleplate of sidelight	2
66	3031400197	Upper door hinge assembly	1
67	3050200094	Earthing wire of compressor	1
68	2208200057I	Upper door hinge Cover	1

69	20114010106	Evaporative condenser	1
70	20122990705	Drain pan	1
71	2207700024	Drain pipe	1
72	2305700043	Cover of Control board	1
74	2500300029	Control board assembly	1
75	3040500011	Drier filter	1
76	2207500499	Upper door Middle balcony	2
77	20122990103	Ice tray	1
78	20122990140	Egg tray	1