

DAEWOO

# **DESPICE**

Refrigerator

**MODEL : RN-325PW**

✓ **Caution :**

In this Manual, some parts can be changed for improving, their performance without notice in the parts list. So, if you need the latest parts information, please refer to PPL(Parts Price List) in Service Information Center (<http://svc.dwe.co.kr>).

**DAEWOO ELECTRONICS Corp.**

[http : //svc.dwe.co.kr](http://svc.dwe.co.kr)

Mar. 2004

# **Serves manual**

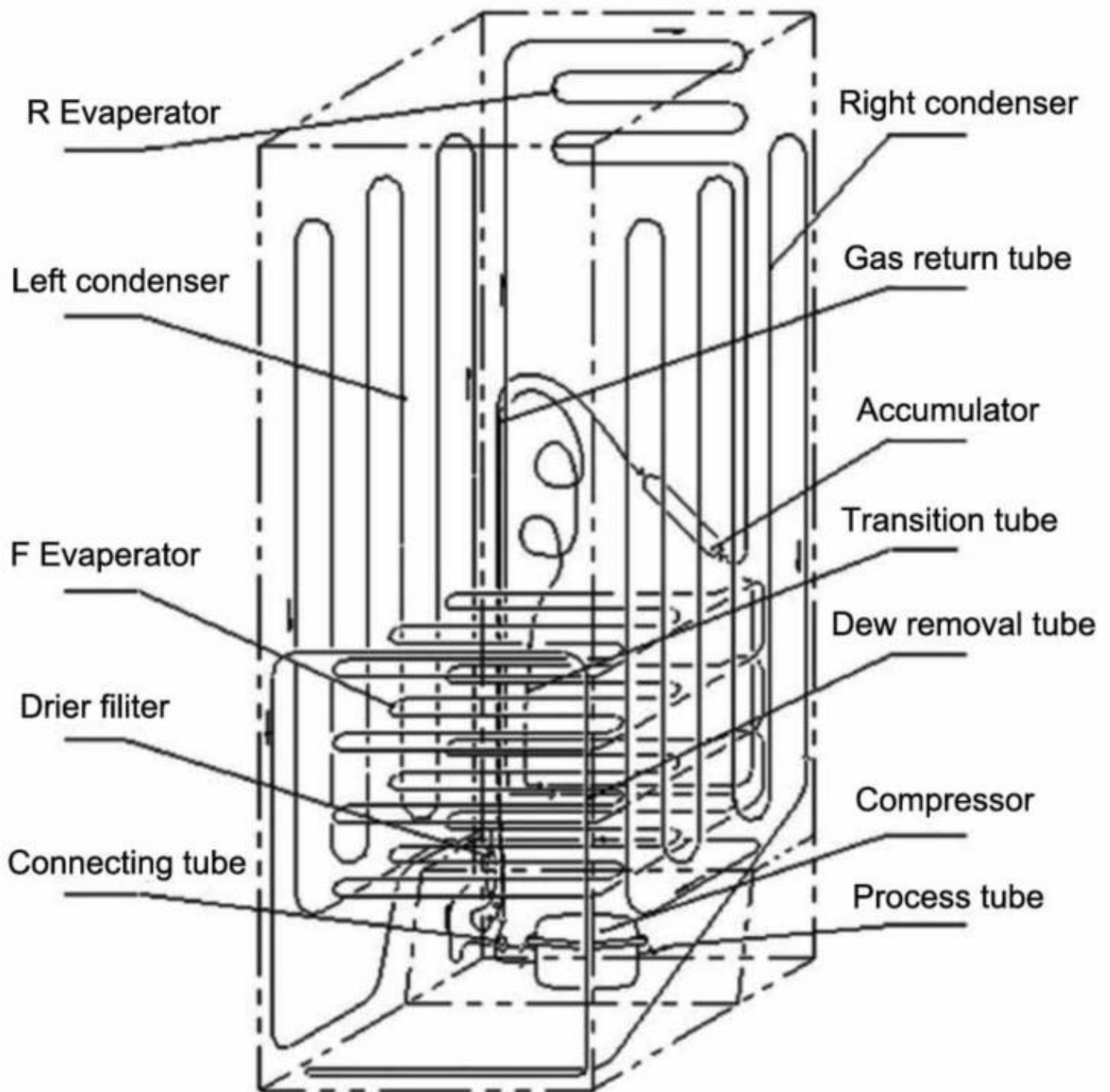
## **60CM Freezer Fridge**

Model:DD2-40

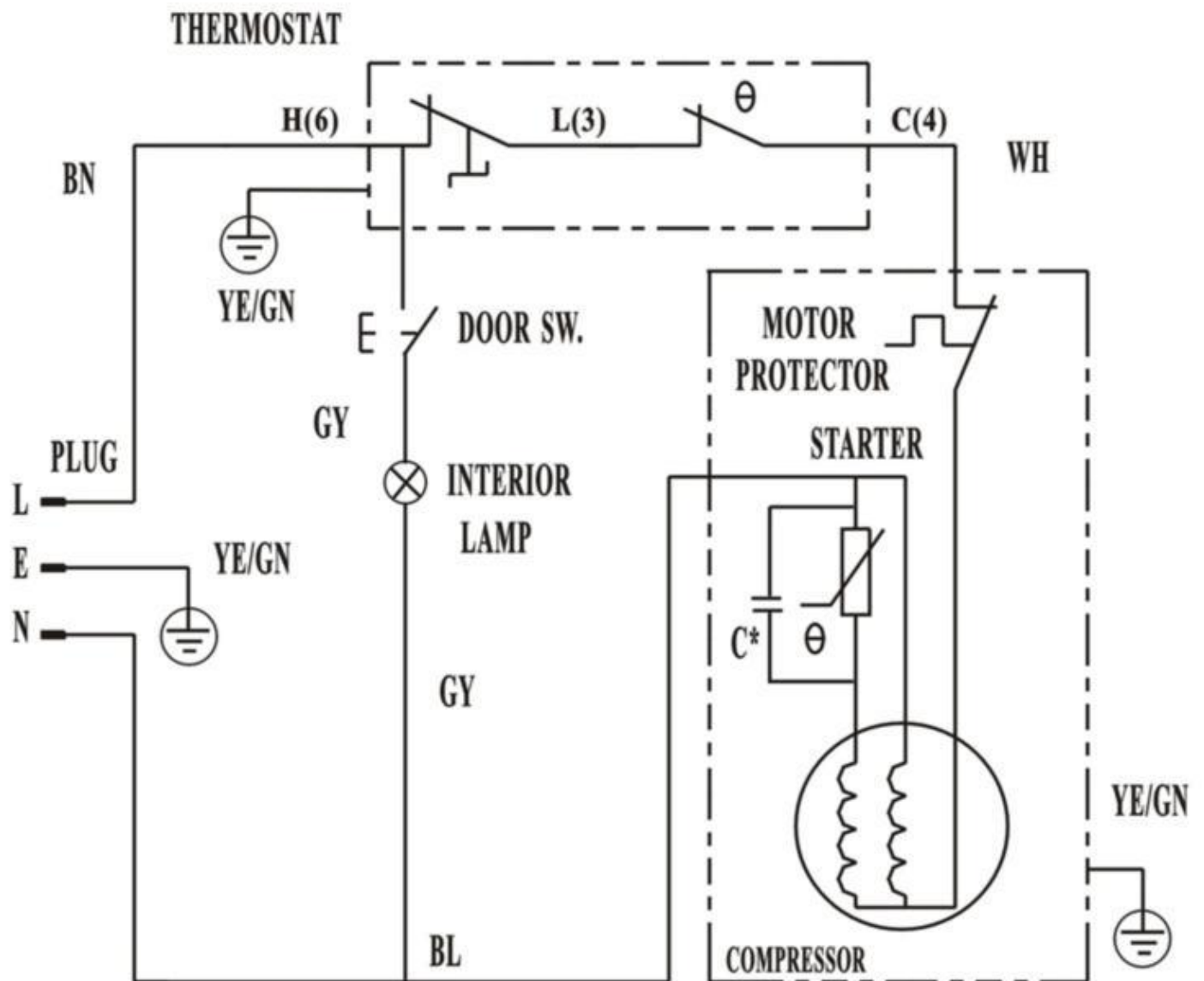
### Contents

- 1      Cover
- 2      The cooling system
- 3      The electrical diagram
- 4      Trouble shooting guide
- 5      Exploded view
- 6      Parts list

## The cooling system



## The electrical diagram

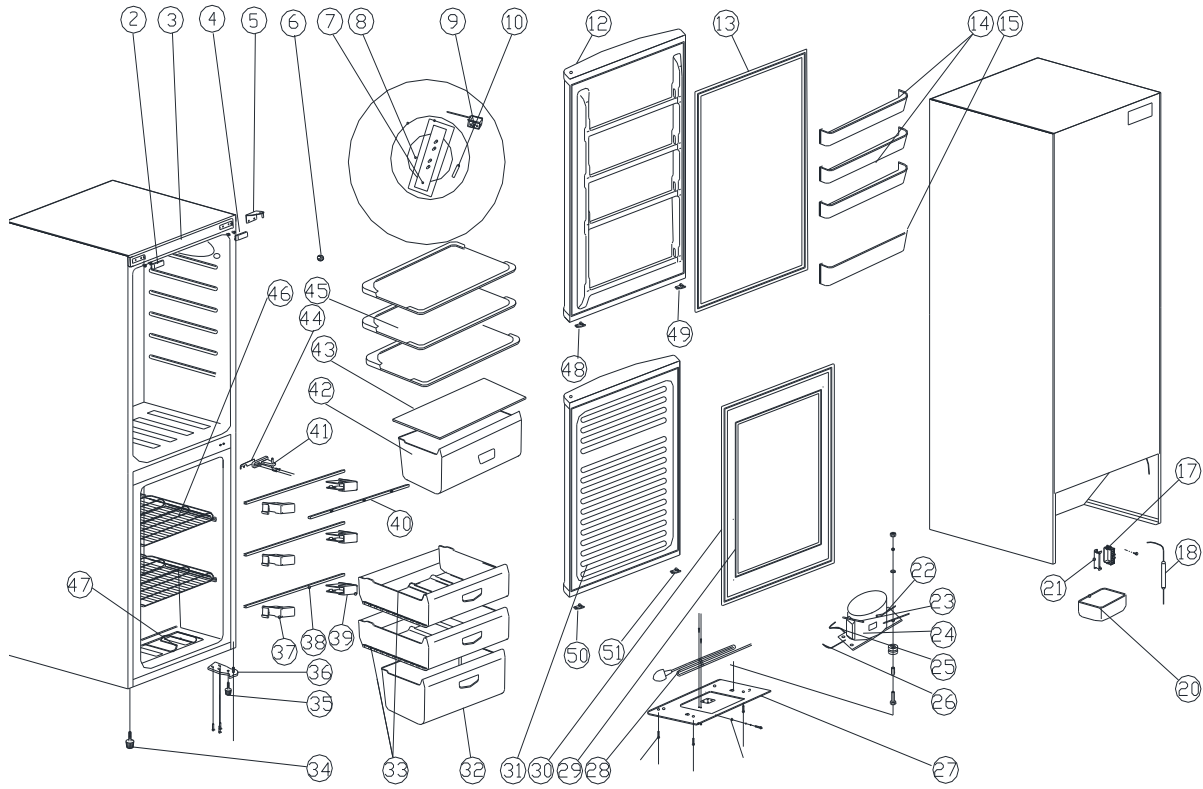


## Trouble shooting guide

No	Problem	Possible Cause	What To Do
1	The refrigerator does not get cold at all.	Not plugged in.	Plug in
		Is the circuit breaker tripped or blown fuse?	Put on the home circuit breaker or change the new fuse.
		Is the refrigerator temperature control setted at "off"?	Set the temperature control knob at "4".
2	The refrigerator does not get cold enough.	Is the refrigerator control dialed set to correct location?	Set it to a colder temperature.
		Is the refrigerator placed in direct sunlight or closely a heat source?	Move the refrigerator to proper location.
		Is the door closed completely?	Close the door completely.
		Is the door opened too frequently or too long?	Open the door less often,
		Does the door gasket seal properly?	Make the gasket sealing properly.
		Is the refrigerator overloaded?	Load less food into it.
3	The food in the refrigerator is frozen	Is the refrigerator control dialed set to correct location?	Set it to a warmer temperature.
		Is the ambient temperature too low?	
4	Two sides of the cabinet are hot: condensation occurs.	Hot-pipe is installed in two sides of refrigerator. That makes refrigerator's temperture lowquckly and save the power	Normal state.
		Condensation can occur when you leave the door open for a long time.	Normal state.
5	Vibrations	The refrigerator is not level and firm.	Place the refrigerator in a level location.
6	The refrigerator is noisy.	Water bubbling comes from the refrigerant circulating of the refrigerator.	Normal state.
		Contraction and expansion of the insulation inside the walls may cause popping and cracking.	Normal state.
		Is the refrigerator unstable or touching the wall?	Keep the refrigerator leaving the wall.
		Is the refrigerator not level?	Adjust the refrigerator leveling.
7	The door can not close properly.	Were the doors not properly installed?	Assure the doors installed properly.
		Is the door gasket dirty and distortion?	Cleaning and flatting the door gasket.
8	The lamp does not work.	Has the home circuit breaker or fuse tripped?	Put on the home circuit breaker or change the new fuse.
		Is the refrigerator's door close completely?	Assure the door close completely.
9	Operating for all long time.	Is the ambient temperature too high?	
		Is the temperature controller in freezer chamber or in refrigerator chamber is set at "strong" position	Sets it at a right position.
		Too much food is loaded into the refrigerator and insufficient spaces for airflow.	Load less food into the refrigerator.

		The door were not closed completely or the gasket not sealing enough.	Close the doors completely or make the gasket sealing enough.
		Open the door too frequently.	Decrease the open-door times.

## Exploded view



(RN-325PW)

No.	Parts code	Description of Spare Part	Quantity
			(UNIT)
2	20014867	Top front decorative cover	1
3	20014868	Decorative front	1
4	20014866	Right door hinge cover	1
5	3031400182	Upper Hinge Assembly	1
6	20050016	Door Switch	1
7	3050400021	LED light	1
8	20014203	Lamp Cover	1
9	20061367	Thermostat	1
10	20015505	Thermostat Knob	1
12	10023171	Upper Door	1
13	20014875	Upper Door Gasket	1
14	20122050412	Upper rack (ice blue)	3
15	20122050413	Lower Rack (ice blue)	1
17	20014437	Wire box	1
18	20060086	Drier filter (for R600a)	1
20	20012807	Drain pan	1
21	20014438	Base of wire box	1
22	20060046	Connecting tube (short)	1
23	20061718	Process tube	2
24	20120090230	Compressor	1
25	20050009	Connecting wire of compressor	1
26	20050008	Earthing wire of compressor	1
27	20120080130	Compressor Base Support	1
28	20050242	Power supply cord plug	1
29	20014877	Inner Door Gasket	1
30	20014876	Lower Door Gasket	1
31	10023172	Lower Door	1
32	20122030357	Lower Drawer (ice blue)	1
33	20122030358	Middle Drawer (ice blue)	2
34	20014361	Long adjustable Foot	1
35	20010123	Long adjustable foot	1
36	20021538	Lower Door Hinge Assembly	1
37	20016937	Left Position Block	1
38	20122990591	Shelf breaker	2
39	20016938	Right Position Block	1
40	20017709	Decorative breaker	1
41	20023116	Middle Door Hinge	1
42	20122040261	Crisper drawer(ice blue)	1
43	20120030099	Cover of Crisper Box	1
44	20012230	Cushion for Door Hinge	1
45	20120020165	Shelf of refrigerator chamber	3
46	20061201	Evaperator of freezer	1
47	20061267	Bottom Evaperator of freezer	1
48	20010068	Right limit block of door	1
49	20010371	Left limit block of door	1
50	20010021	Lower door right aid-closer	1
51	20010384	Lower door left aid-closer	1
52	3070101586	Carton	1
		Totally Quantity:	

Total Amount: