

DAEWOO
ELECTRONICS



SERVICE MANUAL
MODEL: ERF-334M

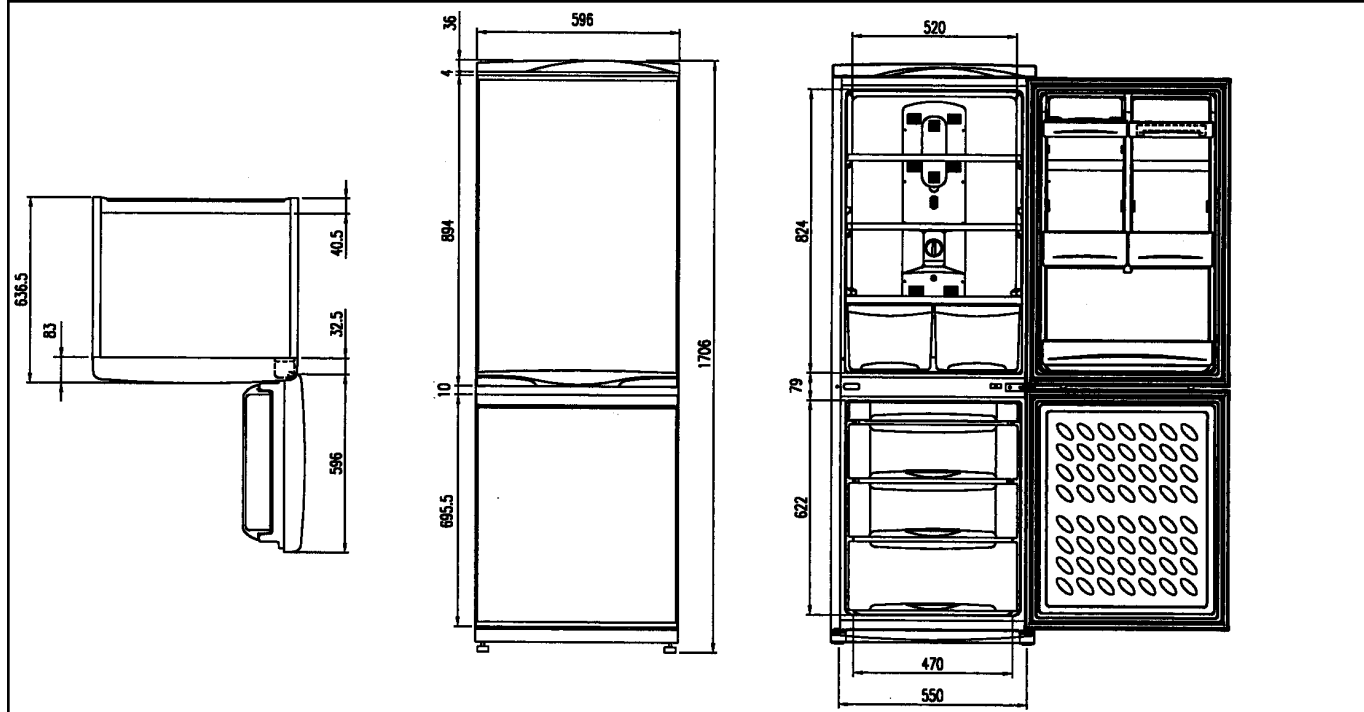
1. SPECIFICATIONS

Specification

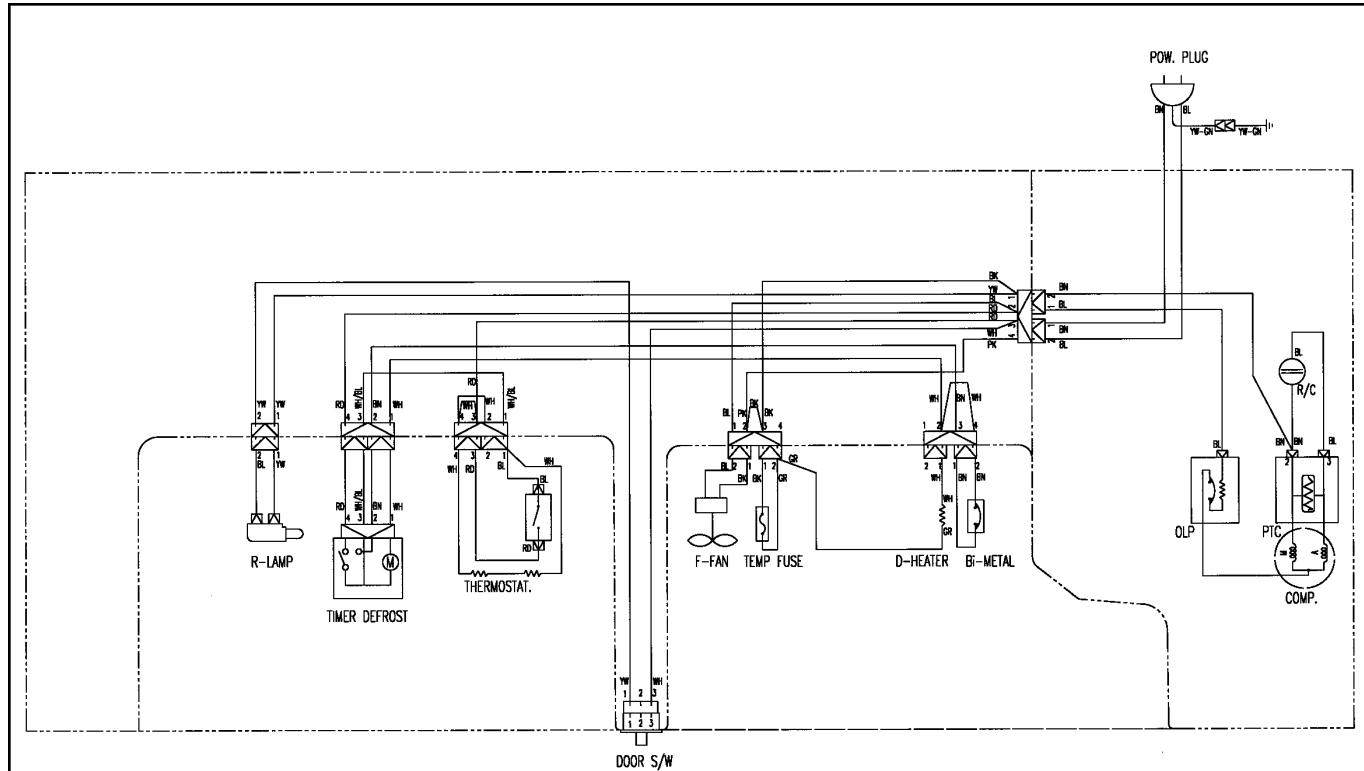
1.1 Product specification

Model name		ERF-334							
Division		M							
Refrigerant type		R-134A							
Refrigerant Q'ty		0.09Kg							
Blowing agent		C-PENTANE							
Cooling system		Fan cool system							
Defrost system		Automatic start & Automatic stop system							
Compressor		HPL17YH-5							
Rated voltage		AC220~240V / 50Hz							
Rated input (W)		135							
Lamp rated input (W)		15							
Gross capacity (liter)	Freezer	99							
	Refrigerator	201							
	Total	300							
External dimension (mm)	Height	1706							
	Width	596							
	Depth	636,7							
Energy consumption	kwh/24h	0,92							
	class	A							
Freezing capacity(kg/24h)		5							
Star rating		* ** *							
Climate class		N							
Net weight (kg)		63,5							

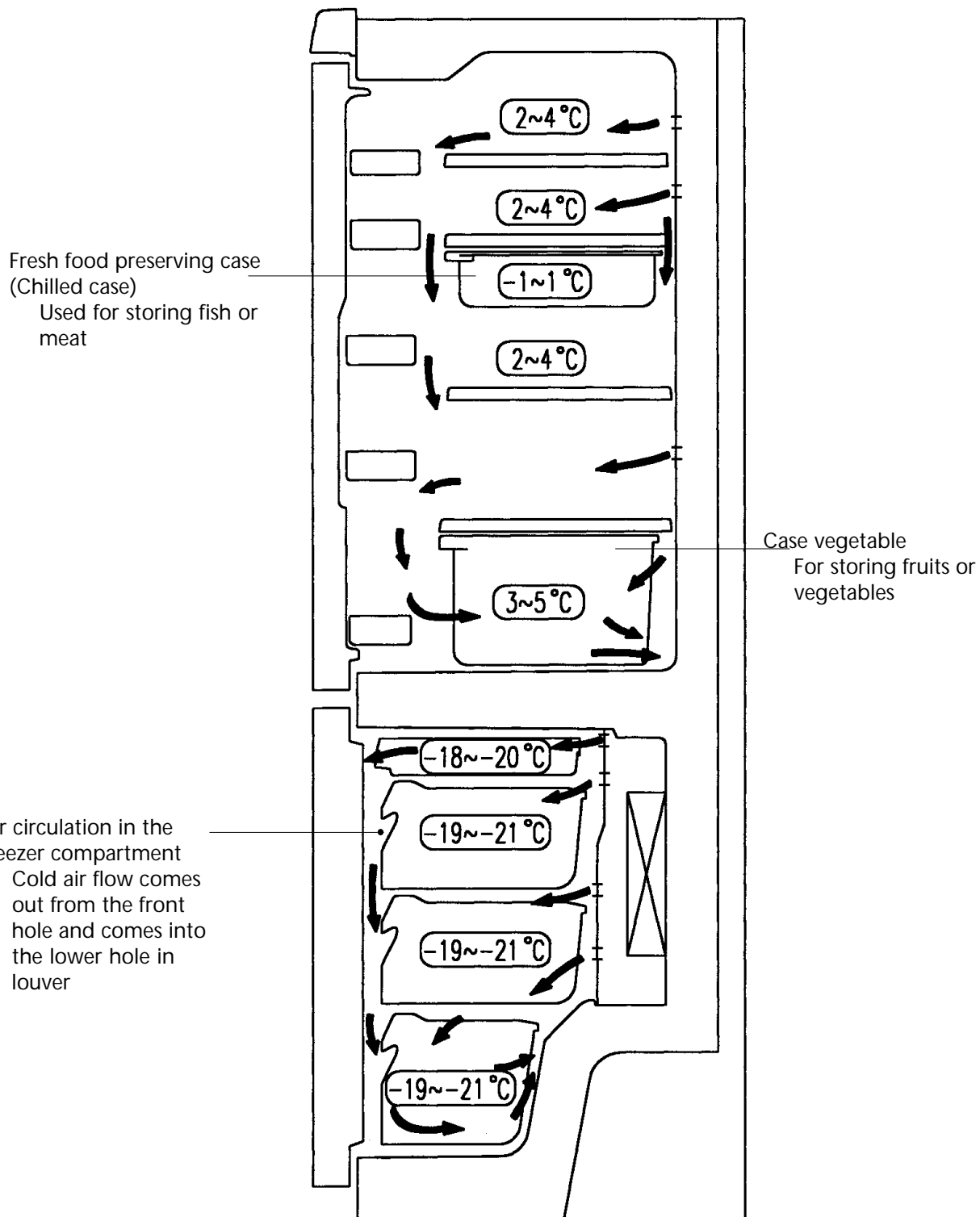
2. EXTERNAL DRAWINGS



3. WIRING DIAGRAMS

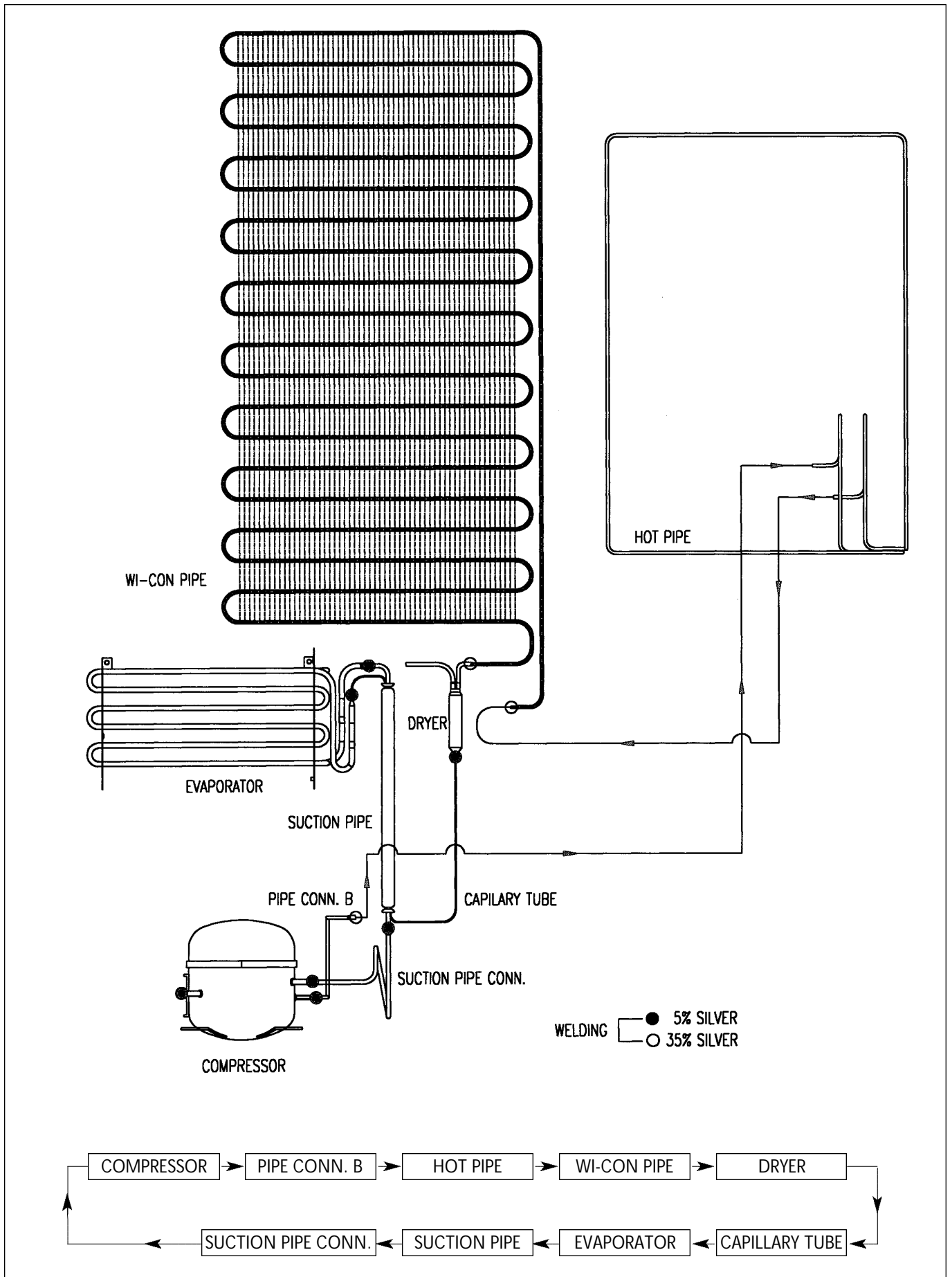


4. AIR FLOW DIAGRAM

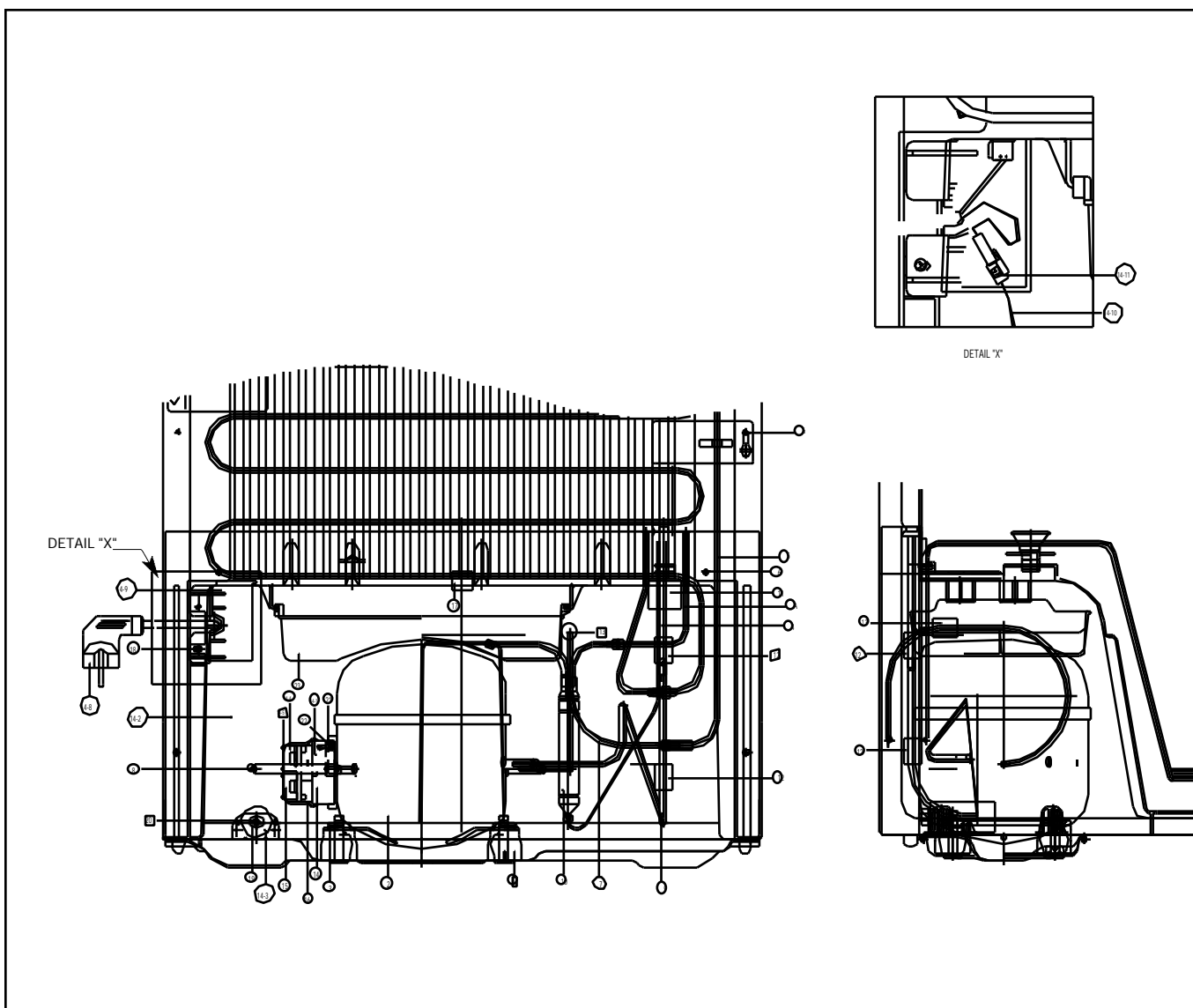


* Standard Model

5. REFRIGERANT CYCLE DIAGRAM



6. MACHINE ROOM VIEW AND PART LIST



N°	PART NAME	N°	PART NAME	N°	PART NAME
A	PIPE HOT	14	BOX RELAY AS	17	CAP DRAINER
1	ABSORBER COMP.	14-1	BOX RELAY	18	SCREW TAPPING
2	COMPRESSOR	14-2	HARNESS RELAY	19	SPECIAL WASHER R/C
3	FIXTURE COMP.	14-3	CAPACITOR RUN AS	20	SPECIAL NUT R/C
4	EVAPORATOR AS	14-4	CABLE CLAMP	21	SPECIAL WASHER
5	PIPE Wi-CON AS	14-5	SCREW TAPPING	22	SCREW MACHINE
6	SPECIAL SCREW E	14-6	SWITCH P RELAY PTC	23	CASE VAPORI
7	PIPE CONN B	14-7	SWITCH P RELAY OL		
8	PIPE CHARGE	14-8	CORD POWER AS		
9	PIPE SUC. CONN	14-9	COVER ME HOUSING		
10	DRYER AS	14-10	HARNESS EARTH		
11	ABSORBER PIPE B (GUM)	14-11	LABEL EARTH		
12	ABSORBER PIPE C (40 gr)	15	RELAY COVER		
13	ABSORBER PIPE C (38 gr)	16	BAND RELAY		

8. COMPONENTS SPECIFICATIONS

1. COMPRESSOR

	ERF-334M
Part name	HPL17YH-5
Part code	3956117S50
Rated voltage	220~240V / 50Hz
Starting type	RSCR
Refrigerant	R-134a

2. PTC

	ERF-334M
Part name	SWITCH P RELAY PTC
Part code	3817923700

3. OLP

	ERF-334M
Part name	4TM129SHBYY-53
Part code	3817923600

4. RUNNING CAPACITOR

	ERF-334M
Part name	CAPACITOR RUN
Specification	5 Uf
Part code	3016402110

5. FAN MOTOR AS

	ERF-334M
Part name	AS MOTOR FAN
Specification	DAI-6122 DESPA
Part code	3011804710

6. HEATER D AS

	ERF-334M
Part name	GLASS HEATER
Specification	230V / 148W
Part code	3012807600

7. LAMP

	ERF-334M
Type	Pygmy
Specification	230V / 15W
Part code	3013600700

8. SWITCH LAMP

	ERF-334M	
Type	DSD-6	
Specification	250V, 0.5A	
Part code	3011721300	

9. SOCKET LAMP AS

	ERF-334M	
Type	AJ0	
Specification	AC 250V	
Part code	3017903900	

10. FUSE TEMPERATURE

	ERF-334M	
Type	SW-105T	
Specification	AC250V, 77°C	
Part code	3017200420	

11. SWITCH BI-METAL

	ERF-334M	
Type	PST-3	
Specification	250V, 50~60Hz	
Part code	3018120600	

12. SWITCH D TIMER

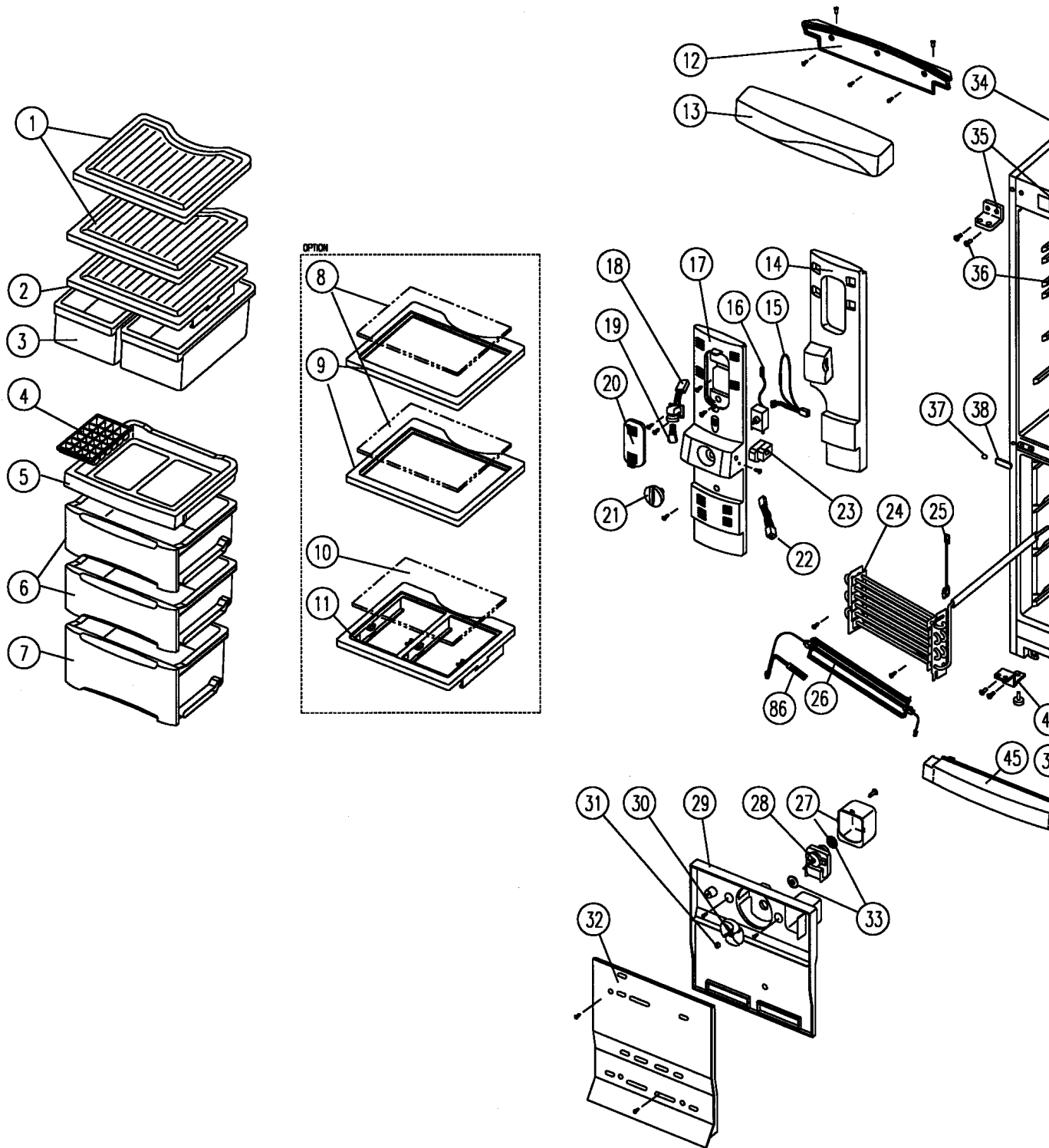
	ERF-334M	
Type	TMDEX09UU1	
Specification	200-240 VAC 50/60 HZ	
Part code	3018100350	

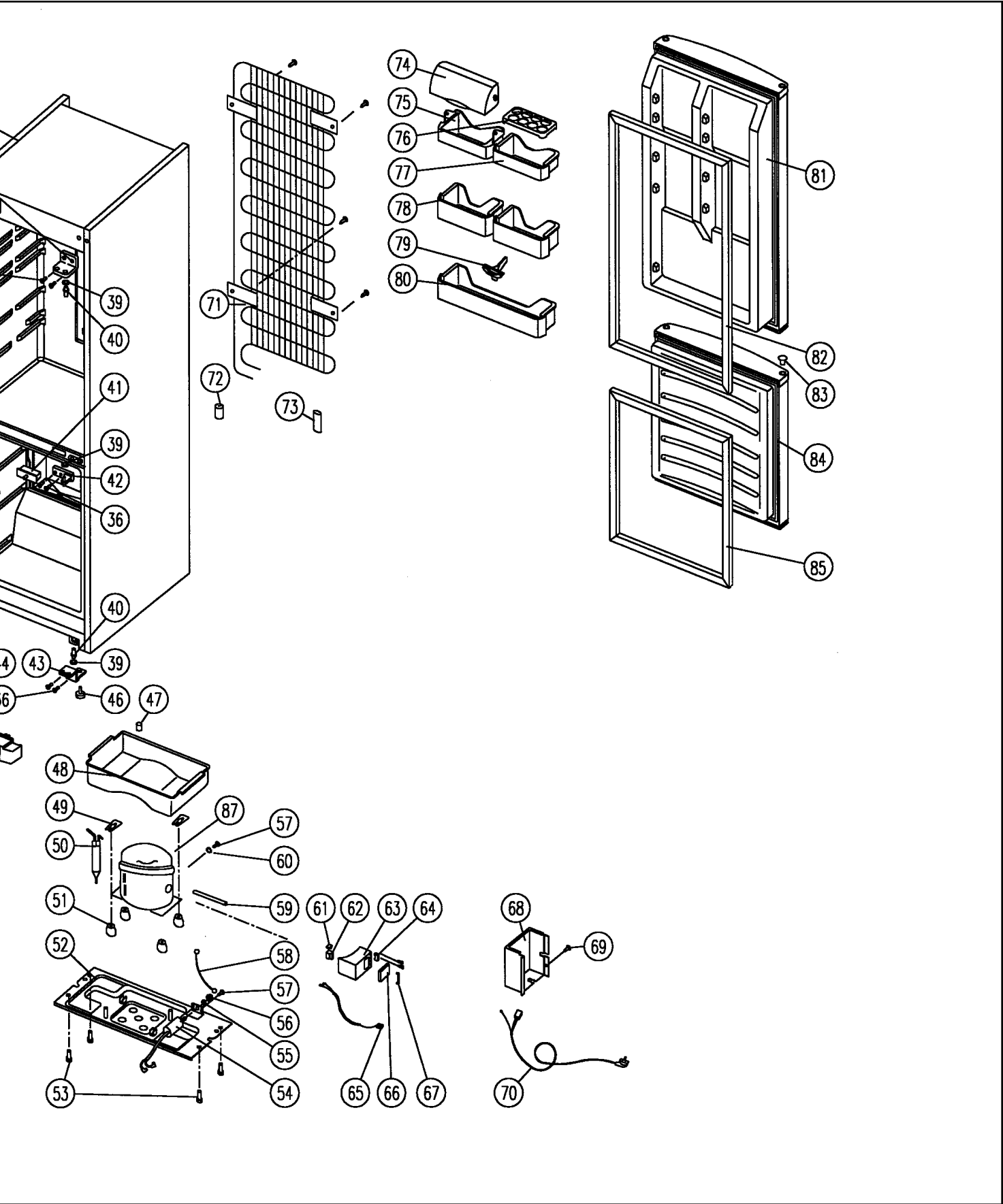
13. THERMOSTAT

	ERF-334M	
Type	BU-261	
Specification	250V, 5A	
Part code	3018120900	

9. EXPLODE DRAWINGS

1. ERF-334M





10. PART LIST

1. Part list (ERF-334M type)

NO	PART NAME	PART CODE	MODEL	DESCRIPTION	REMARK
1	SHELF R	3017823200	2	GPPS	394/414
2	COVER VEGTB CASE	3011453600	1	GPPS	
3	CASE VEGTB	3011163480	2	GPPS	
4	CASE ICING	3011163200	1	PP	
5	CASE FD	3011163140	1	HIPS	
6	CASE FB AS	3011168300	2	CASE+COVER	
7	CASE FA AS	3011164100	1	CASE+COVER	
8	PLATE SHELF GLASS	3014547700	2	GLASS t4.0	OPTION
9	FRAME GLASS SHELF	3012202400	2	HIPS	OPTION
10	PLATE V/CASE COVER GLASS	3014547800	1	GLASS t4.0	OPTION
11	FRAME V/CASE COVER	3012202600	1	HIPS	OPTION
12	BASE CONTROL PANEL	3010318700	1	PP	
13	PANEL CONTRL M	3014231100	1	HIPS	
14	INSULATOR MULTI DUCT	3013337600	1	F-PS (0.025)	
15	HARNES THERMOSTAT	3012731500	1		
16	THERMOSTAT AS	3018120900	1	BU-261	
17	COVER MULTI DUCT	3011453000	1	HIPS	
18	SOCKET LAMP AS	3017903900	1		ASSY
19	LAMP	3013600700	1	230V 15W	
20	WINDOW LAMP	3015503300	1		GPPS
21	KNOB R	3013401410	1	HIPS	
22	HARNES TIMER	3012735300	1		
23	SWITCH DEF TIMER	3018100350	1	220V/50HZ	
24	EVAPORATOR AS	3017045700	1	EVA+SUC PIPE	
25	SWITCH BI-METAL	3018120600	1	250V 5A	
26	HEATER D AS	3012807600	1	GLASS HEATER+FUSE TEMP	
27	BRACKET FAN MOTOR	3010615600	1	PP	
28	MOTOR FAN AS	3011804710	1	DAI-6122DESPA	
29	LOUVER F B	3018911400	1	PP (411:HIPS)	
30	FAN	3011801410	1	ABS	
31	FIXTURE FAN RING	3012005400	1	SUS304 t0.5	
32	LOUVER F A	3018913700	1	HIPS	
33	BUSHING FAN MOTOR	3010901800	2	NBR	
34	ASSY CAB URT	3010086300	1	ASSY	
35	HINGE *T	3012908100	2	P/O+ZN t3.2	
36	SPECIAL BOLT C	3016004900	10	M5xP0.89xL16 SWCH22A	
37	CAP SCREW	3010920200	1	PE-LD	
38	CAP SCREW HOLE	3010920300	1	HIPS	
39	SPECIAL WASHER HINGE	3016005500	3	S20C t1.0 13/7	
40	SHAFT HI	3014903200	2		
41	SWITCH DOOR	3018120500	1	DSD-6	
42	HINGE *M	3012913101	1	ZNDC2, DIE CASTING	
43	HINGE *U *R	3012912200	1	SCP-1 (T3,2)	
44	HINGE *U *L	3012912100	2	SCP-1 (T3,2)	
45	COVER CAB BRACKET	3011467600	1	HIPS	
46	FOOT ADJUSTING AS	3012101800	2	PP+SPECIAL BOLT	
47	CAP DRAIN HOSE	3010919700	1	NBR	
48	CASE VAPORY	3011162600	1	PP	
49	FIXTURE COMP	3012005300	2	SK5+ZN5-C t0.8	
50	DRYER ASSY	3016802202	1	15Gr (t0.51)	
51	ABSORBER COMP	3010101700	4	NR	
52	BASE COMP	3010318600	1	SBHG t1.0	
53	SPECIAL SCREW A	3016004300	4	M6.5xL20	
54	CAPACITOR RUN	3016402110	1	5uF	
55	SPECIAL WASHER R/C	3016006510	1		
56	SPECIAL NUT R/C	3016006410	1		
57	SCREW MACHINE	7051401065	2	PAN 4x10 BSNI	

