



Service Manual

Vacuum Cleaner

Model: RC-4085BLBA



1. SPECIFICATIONS

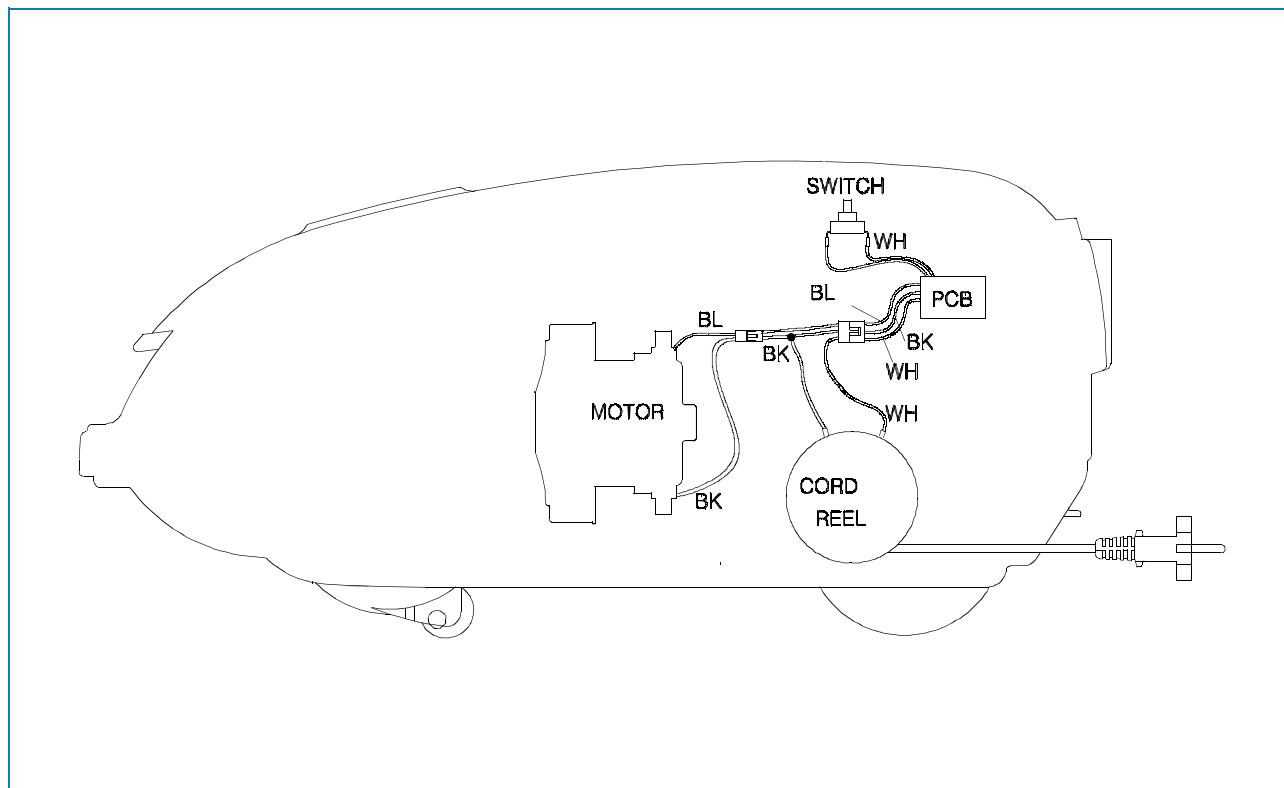
MODEL	RC-4085B	
RATED VOLTAGE/FREQUENCY	230V/50Hz	
INPUT WATT	NOR(1100W) MAX(1300W)	
WEIGHT(BODY)	3.7Kg	
DIMENSION(LHD)	482 X 272 X 223KΩ	
CORD LENGTH	6m	
POWER CONTROL	ON/OFF	
DUST METER	MECHANICAL	
HOSE	NON-CURRENT 1.6m	
EXTENSION PIPE	2 PLASTICS	
BRUSH	NORMAL SUCTION BRUSH	
NOZZLE	DUSTING BRUSH CREVICE NOZZLE	

2. EXTERNAL VIEWS

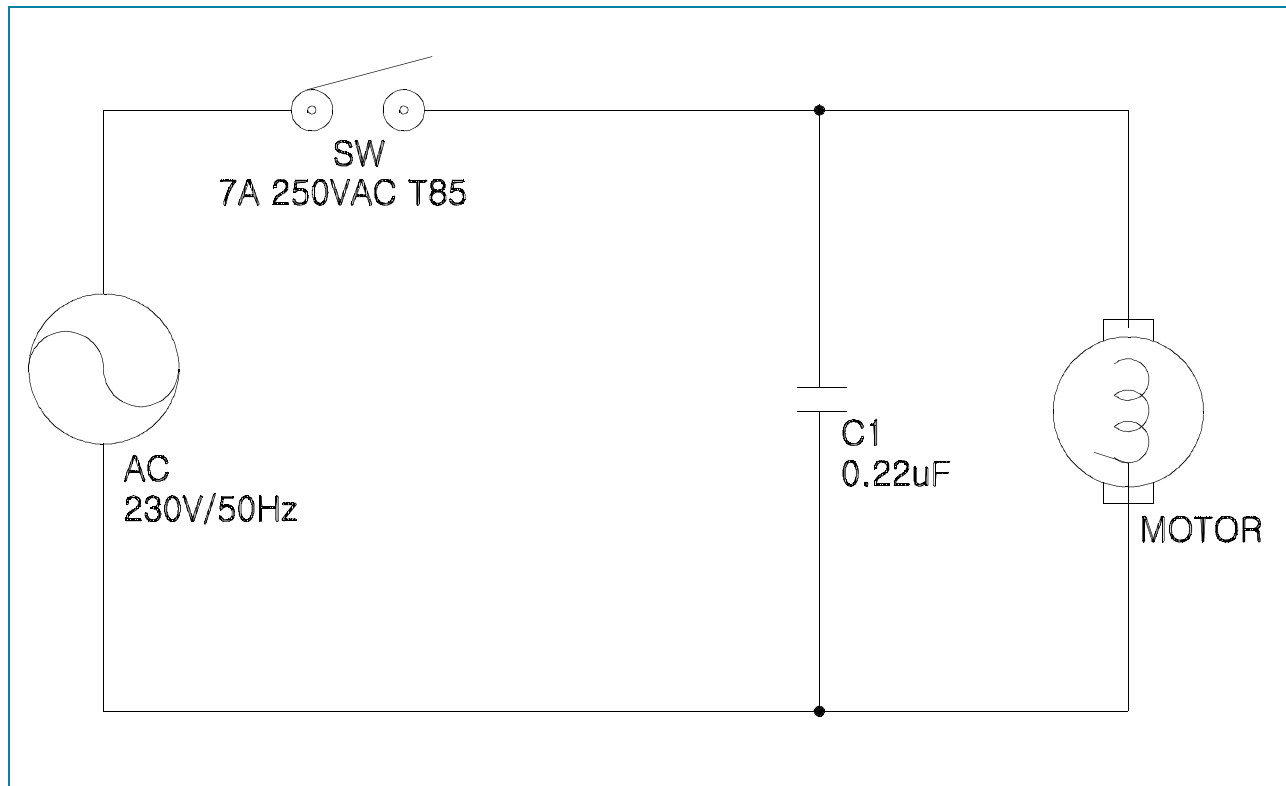
1. ASSEMBLY

PART NAME		MODEL		
		RC-4085B		
A - DUST METER		O		
B - CREVICE NOZZLE		O		
C - DUSTING BRUSH		O		
D - SWITCH BUTTON		O		
E - CORD REWIND BUTTON		O		
F - POWER CORD		O		
G - HOSE ASSY		O		
H - NORMAL BRUSH		O		
I-1 - EXTENSION PIPE (2 Plastic Tubes)		O		
I-2 - EXTENSION PIPE (Steel Telescopic Tube)		-		
POWER CONTROL	ELECTRONIC VARIABLE	-		
	ON/OFF TYPE	O		

3. WIRING DIAGRAM MODEL : RC-4085B



2. CIRCUIT DIAGRAM MODEL : RC-4085B

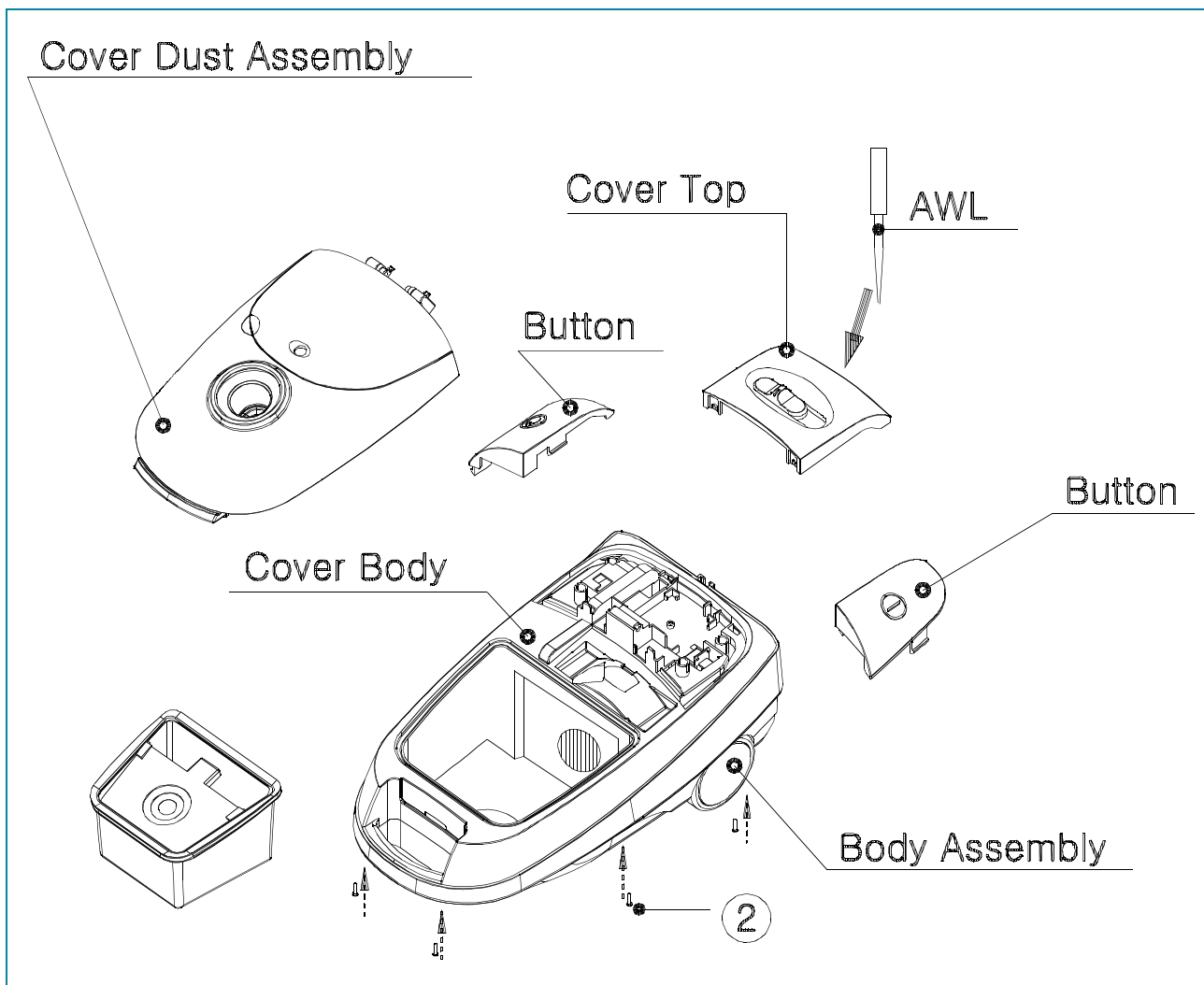


4. TROUBLE SHOOTING GUIDE

TROUBLE	CAUSE	COUNTERMEASURE
SUCTION POWER IS WEAK	FILTER BAG(PAPER OR CLOTH) IS FULL WITH DUST	CHANGE IT WITH NEW ONE OR REMOVE THE DUST
	CLOGGING OR TEAR IN HOSE	REMOVE OBSTACLE OR REPLACE THE HOSE
	DEFECTIVE MOTOR	REPLACE THE MOTOR (SEE 5-2)
CLEANER DOES NOT WORK	BREAKING IN POWER CORD (AT BLADE TIP OR ROOT OF PLUG)	REPLACE THE POWER CORD (SEE 5-3)
	DEFECTIVE SLIDE VOLUME LOCATED IN COVER BODY	REPLACE IT (SEE 5-5)
	DEFECTIVE PCB ASSEMBLY	REPLACE IT (SEE 5-5)
	BREAKING OF CONNECTIONS OR POOR CONTACTS IN CORD REEL ASSEMBLY	REPAIR (SEE 5-3)
	DEFECTIVE MOTOR	REPLACE IT (SEE 5-2)
	BREAKING OF CONNECTIONS IN COVER BODY ASSEMBLY	REPAIR (SEE 5-5)
	DEFECTIVE SWITCH	REPLACE IT (SEE 5-5)
MOTOR DOES NOT STOP EVEN IF SWITCH	DEFECTIVE PCB ASSEMBLY	REPLACE IT (SEE 5-5)
POWER CORD IS NOT WOUND UP	BROKEN REEL SPRING OF CORD REEL	REPLACE IT (SEE 5-3)
	POWER CORD BROKE AWAY FROM THE BOBBIN	REPAIR (SEE 5-3)
CAUTION : BE CAREFUL WHEN BREAKING UP THE CORD REEL, THE REEL SPRING MAY SPRING OUT OF THE SPRING COVER.		
POWER CORD DOES NOT STOP AT AN ARBITRARY POSITION	ABRASION OF THE ROLLER BRAKE OF CORD REEL	REPLACE THE ROLLER BRAKE (SEE 5-3)
	LEVER SPRING BROKE AWAY FROM THE CORD REEL BRACKET	REPAIR (SEE 5-3)

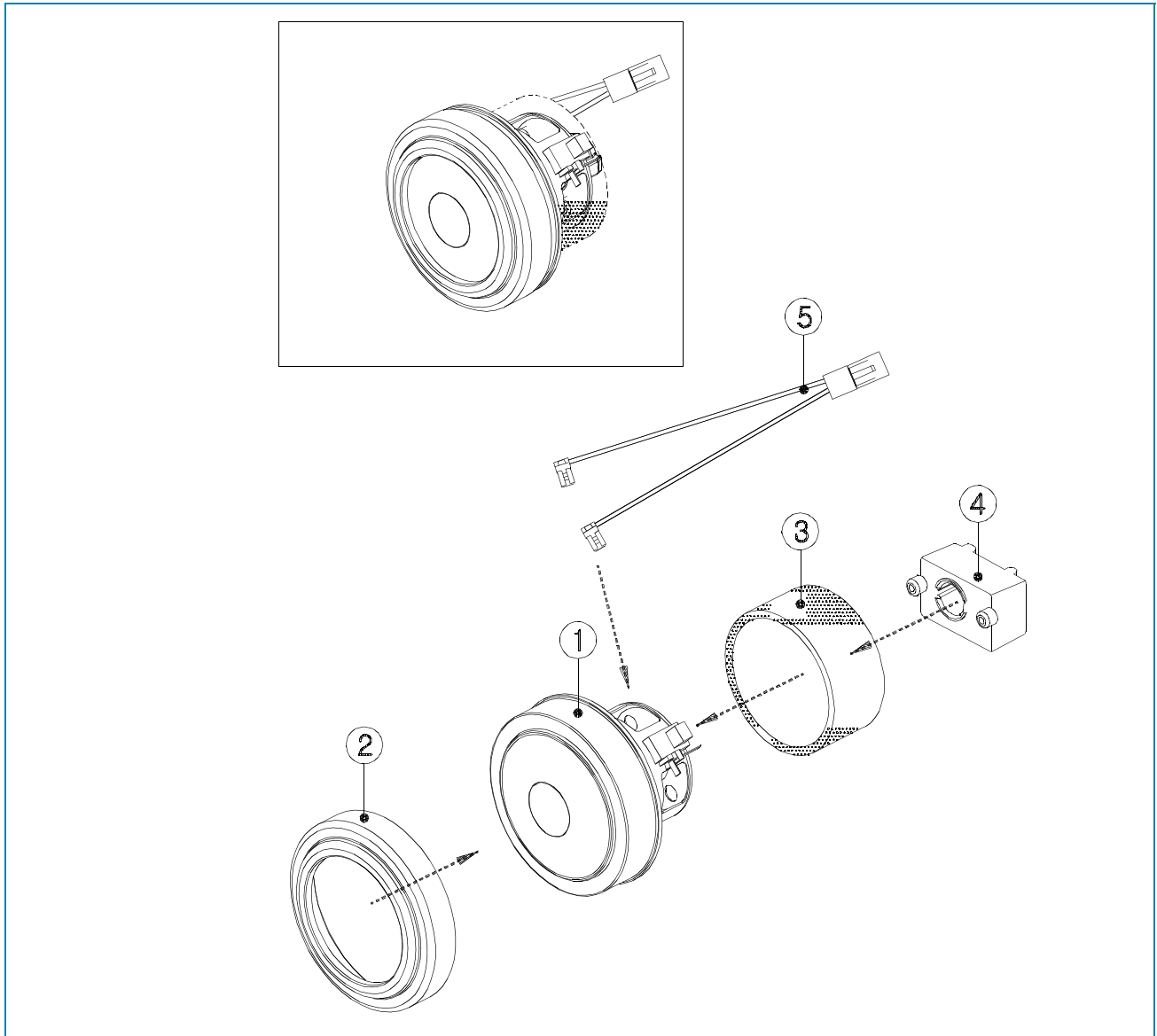
5. DISASSEMBLING AND TREATMENT

1. CLEANER ASSEMBLY



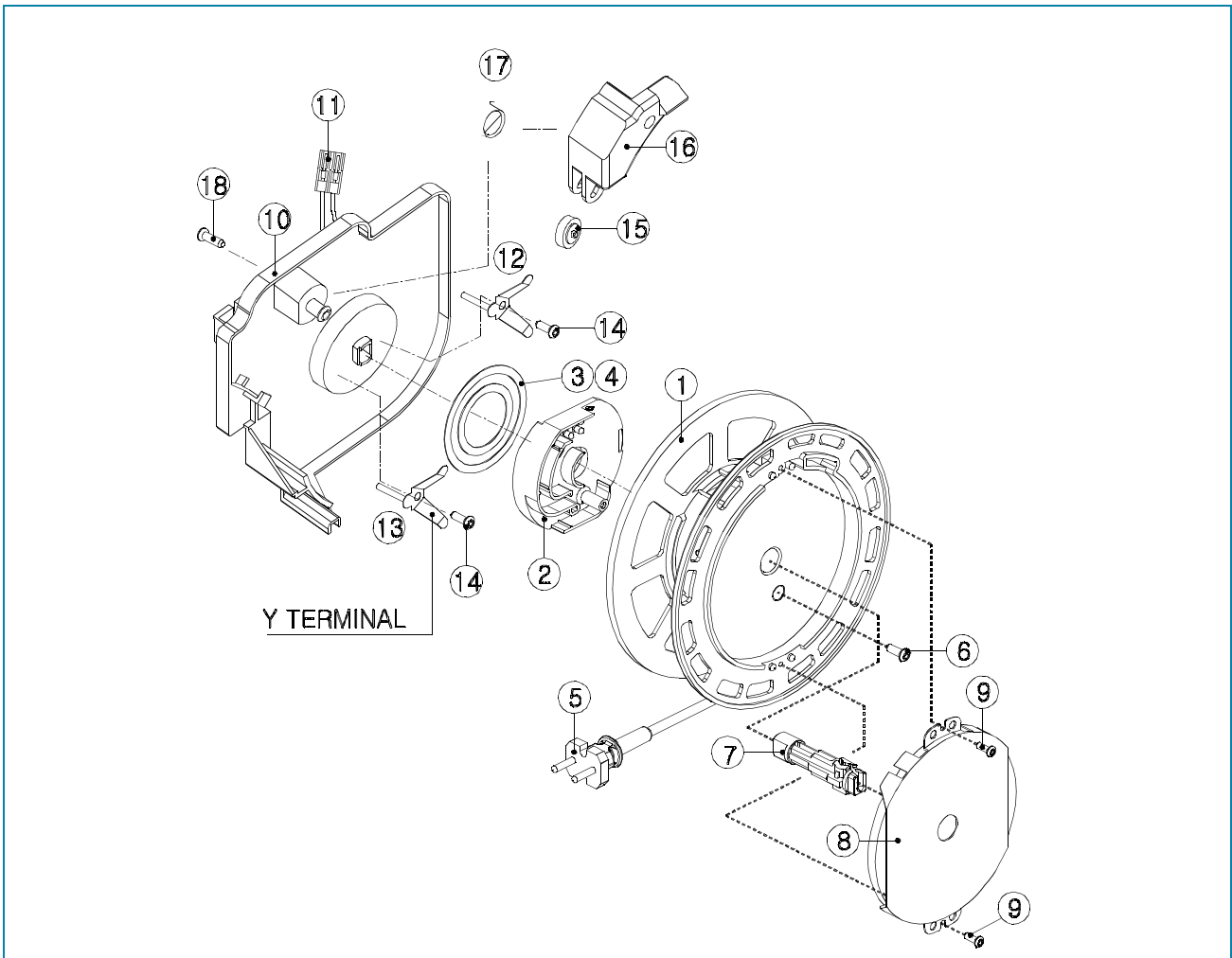
- 1) TAKE THE COVER TOP OUT OF THE COVER BODY BY USING AN AWL.
- 2) SEPARATE THE COVER DUST ASSEMBLY FROM THE COVER BODY.
- 3) UNSCREW THE 6 SCREWS(2) THEN LIFT THE COVER BODY UP FROM THE BODY ASSEMBLY.
- 4) SEPARATE THE TWO BUTTONS FROM THE COVER BODY.

2. MOTOR ASSEMBLY



- 1) TAKE THE MOTOR ASSEMBLY OUT OF THE BODY.
- 2) CHECK THE MOTOR(1) (WHETHER THE MOTOR IS BURNT OUT OR NOT).

3. CORD FREEL ASSEMBLY

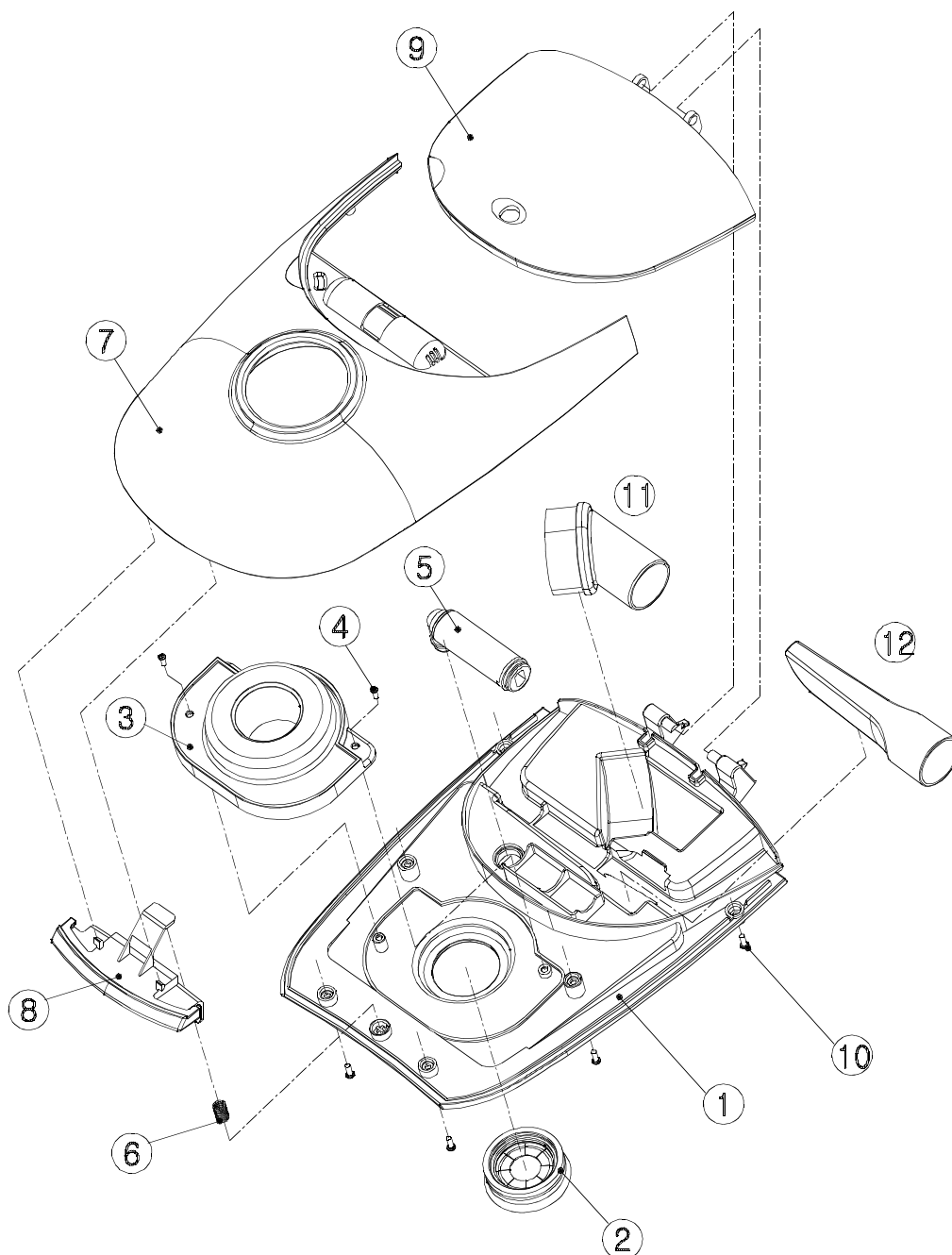


- 1) TAKE THE CORD REEL OUT OF THE BODY.
 - 2) UNSCREW THE SCREW(18) AND SEPARATE THE BOBBIN(1) FROM THE BRACKET(10) AND CHECK THE CONTACTS BETWEEN THE Y TYPE TERMINALS AND THE RING TYPE TERMINALS(3, 4).
 - 4) CHECK THE LEVER SPRING(17).
 - 5) IF THE ROLLER BRAKE(15) IS WORN OUT AND SEPARATE THE LEVER(16) FROM THE BRACKET (10), THEN REPLACE THE ROLLER BRAKE(15).
- AT THIS TIME, THE BOBBIN(1) IS ROTATED COUNTERCLOCKWISE DUE TO THE PRESERVED WINDING.
- 6) IF THE REEL SPRING(8) IS BROKEN, UNSCREW THE 2 SCREWS(9) AND REPLACE IT.

CAUTION : WHEN DISASSEMBLING, THE REEL SPRING MAY SPRING OUT OF THE COVER.

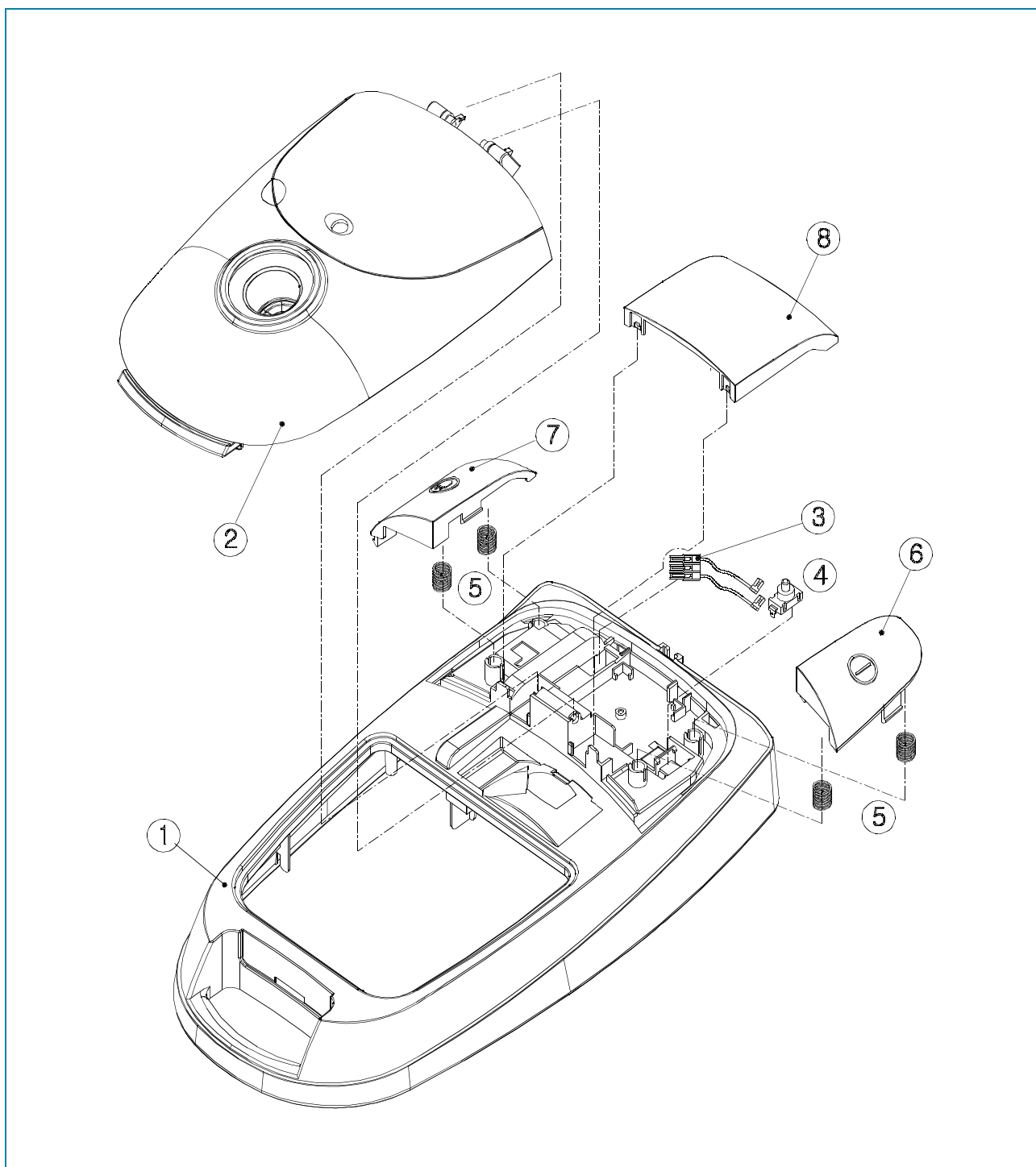
- 7) UNSCREW THE SCREW (6) AND SEPARATE THE HOLDER TERMINAL(2) FROM THE BOBBIN(1).
- 8) CHECK THE CONNECTIONS BETWEEN THE POWER CORD(5) AND THE RING TERMINALS(3,4).
- 9) WHEN ASSEMBLING, MAKE THE RESERVED WINDING 5 REVOLUTIONS OF THE BOBBIN CLOCKWISE.

4. COVER DUST ASSEMBLY



- 1) UNSCREW THE 6 SCREW(10) AND SEPARATE THE PLATE COVER(1) FROM THE COVER DUST(7).
- 2) UNSCREW THE 2 SCREW(4) AND SEPARATE THE SOCKET(3) FROM THE PLATE COVER(1).

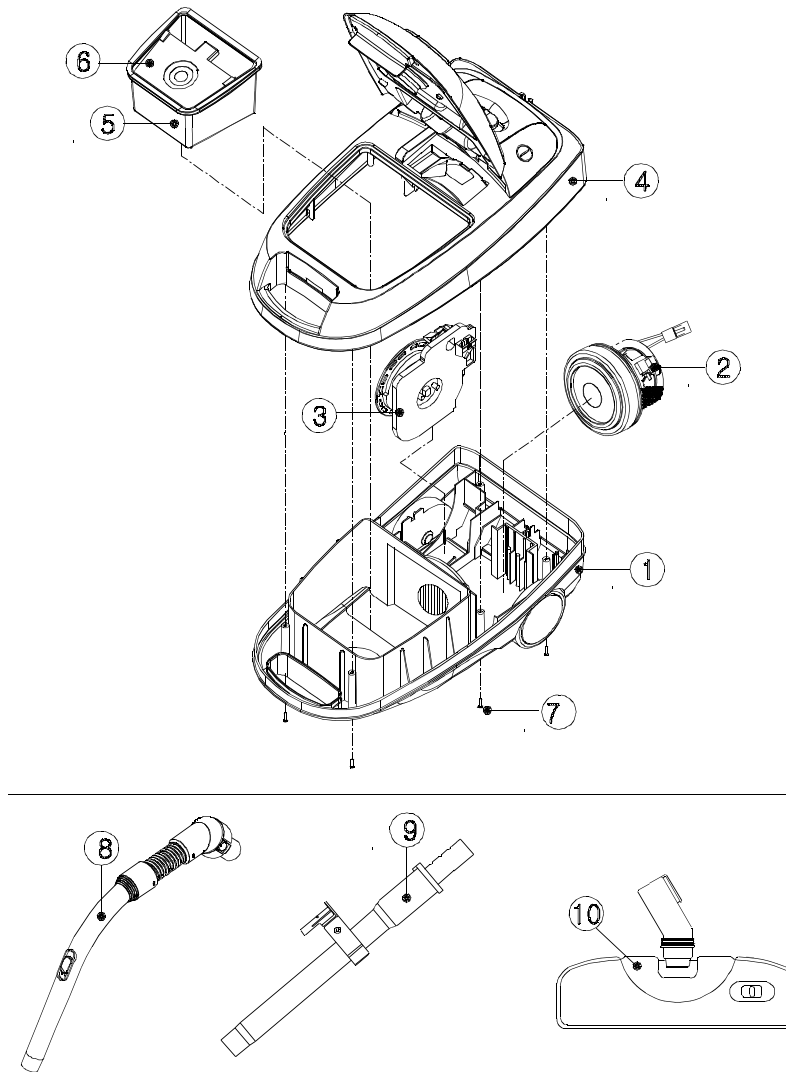
RC-4085B



- 1) CHECK THE CONNECTIONS BETWEEN THE C/R ASSY AND HARNESS(3).
- 2) CHECK THE SWITCH(4).

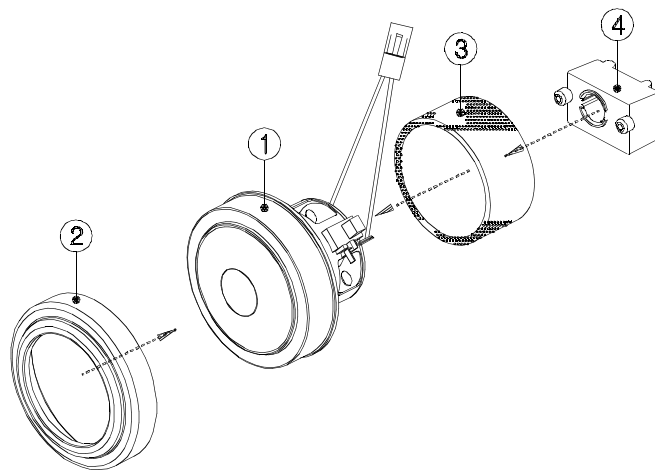
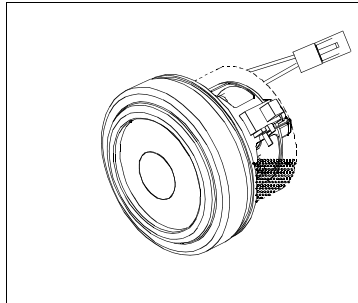
EXPLODED VIEW AND PARTS LIST

RC-4085B



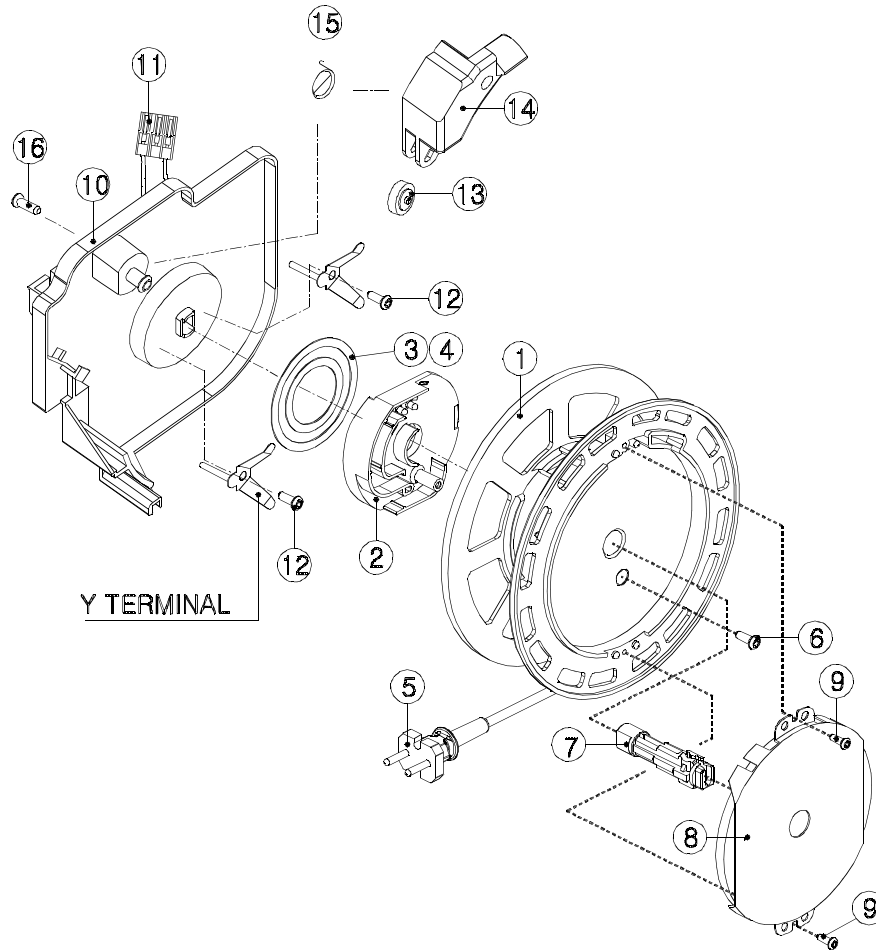
No	PART NAME	PART CODE	SPECS.	QTY
1	BODY AS	3620408900	ASSY	1
2	ASSY MOTOR	3962511400	230V 1100W VH111CA010	1
3	CORD REEL AS	3629507300	ASSY	1
4	PCB AS	3624304710	ON/OFF PCB	1
5	COVER AS	3621426100	ASSY	1
6	FILTER BOX AS	4569C21000	ASSY	1
7	HOLDER FILTER AS	3623001700	PP	1
8	SCREW TAPPING	7121402011	T2S PAN 4 X 20 MFZN	6
9	HOSE AS	3623207400	ASSY	1
10	PIPE AS	3624412200	2 PLASTICS	2
11	BRUSH AS	3629307300	ASSY	1

2. MOTOR ASSEMBLY



No	PART NAME	PART CODE	SPECS.	QTY
1	MOTOR UNIVERSAL	3962511400	230V 1100W VH111CA010	1
2	ABSORBER MOTOR	4569C10071	PU FOAM	1
3	CAP MOTOR F	4565T20040	NR FORM	1
4	MOUNT MOTOR	3627900201	NR	1

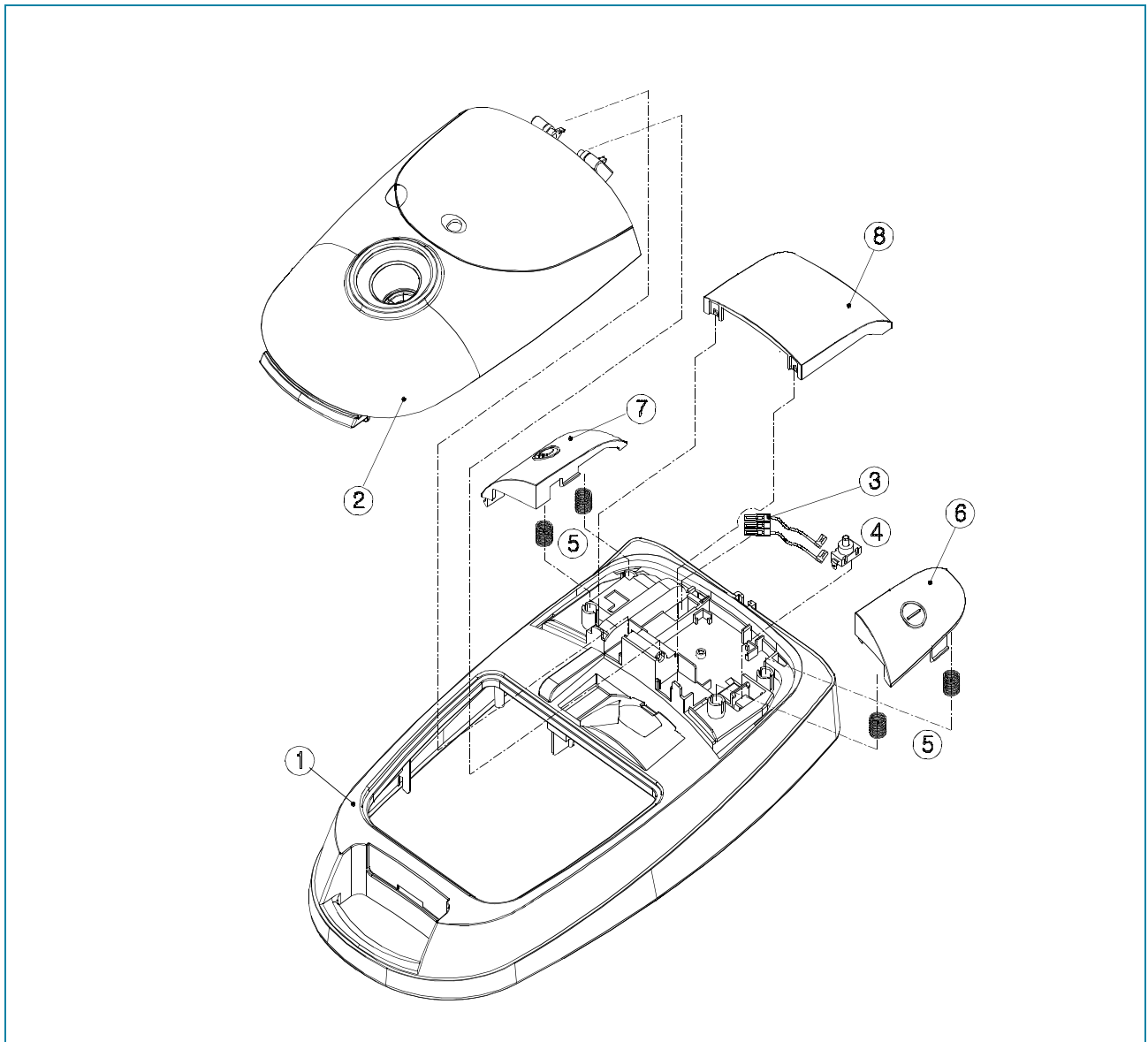
2) RC-4085B (36295077300)



No	PART NAME	PART CODE	SPECS.	QTY
1	BOBBIN	4569C35011	PP	1
2	HOLDER TERMINAL	4565A36020	PC(V-0)	1
3	TERMINAL	4565A36024	C2600P-1/2H T0.3	1
4	TERMINAL	4565A36034	C2600P-1/2H T0.3	1
5	CORD POWER	3621302500	250V 16A H05VVH2F TA-17	1
6	SCREW TAPPING	7121301411	T2S PAN 3 X 14 MFZN	1
7	SHAFT CR	4569C35051	PC	1
8	SPRING AS	3625102005	SUS301-EH+COVER 3800MM	1
9	SCREW TAPPING	7121300811	T2S PAN 3 X 8 MFZN	2
10	BRACKET CR	3620600310	PP	1
11	HARNESS	3628703110	Y TER + WIR(BK/WH) + HOUSING	1
12	SCREW TAPPING	7121400811	T2S PAN 4 X 8 MFZN	2
13	STOPPER CR	4569C35082	NBR	1
14	LEVER CR	3623700700	ABS	1
15	SPRING LEVER	3625102300	HSW3	1
16	SCREW TAPPING	7121401411	T2S PAN 4 X 14 MFZN	1

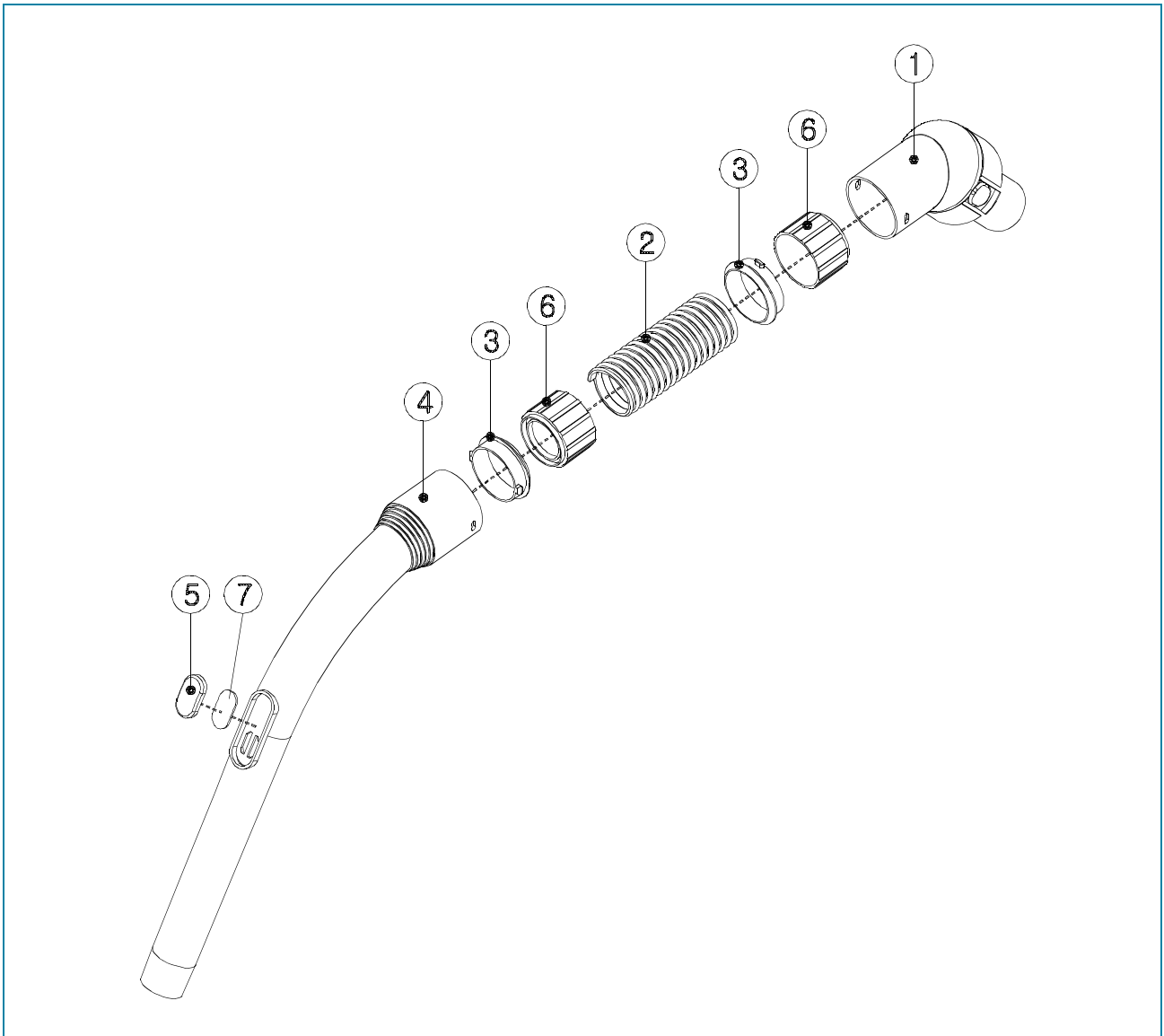
EXPLODED VIEW AND PARTS LIST

2) RC-4085B (3621426100)



No	PART NAME	PART CODE	SPECS.	QTY
1	COVER BODY	3621423700	ABS	1
2	COVER DUST AS	3621423600	ASSY	1
3	HARNESS	3622711700	3P HOUSING + 187RE	1
4	PUSH SWITCH	3629002000	DPC 1114	1
5	SPRING BUTTON	3625108400	HSW3	4
6	BUTTON SWITCH	3626605000	ABS	1
7	BUTTON CR	3626605100	ABS	1
8	COVER TOP(F)	3621424100	ABS	1

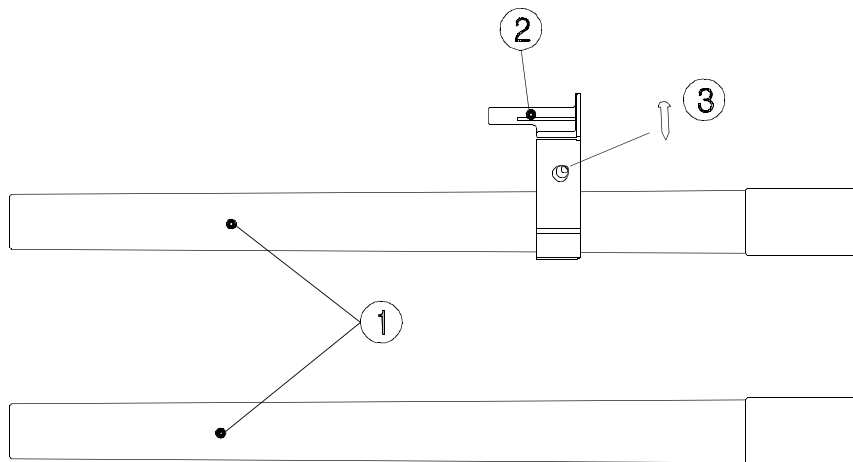
6. HOSE ASSEMBLY (3623207400)



No	PART NAME	PART CODE	SPECS.	QTY
1	PIPE ADAPTER	3629102000	PP	1
2	HOSE	3623207500	EVA, 1.6m	1
3	HOLDER HOSE	4569A71021	PP	2
4	PIPE HOSE	3624408200	PP	1
5	VALVE AIR	3625400400	PP	1
6	CUFF HOSE	3620800200	LDPE	2
7	PACKING HOSE	3624005900	SPONGE	1

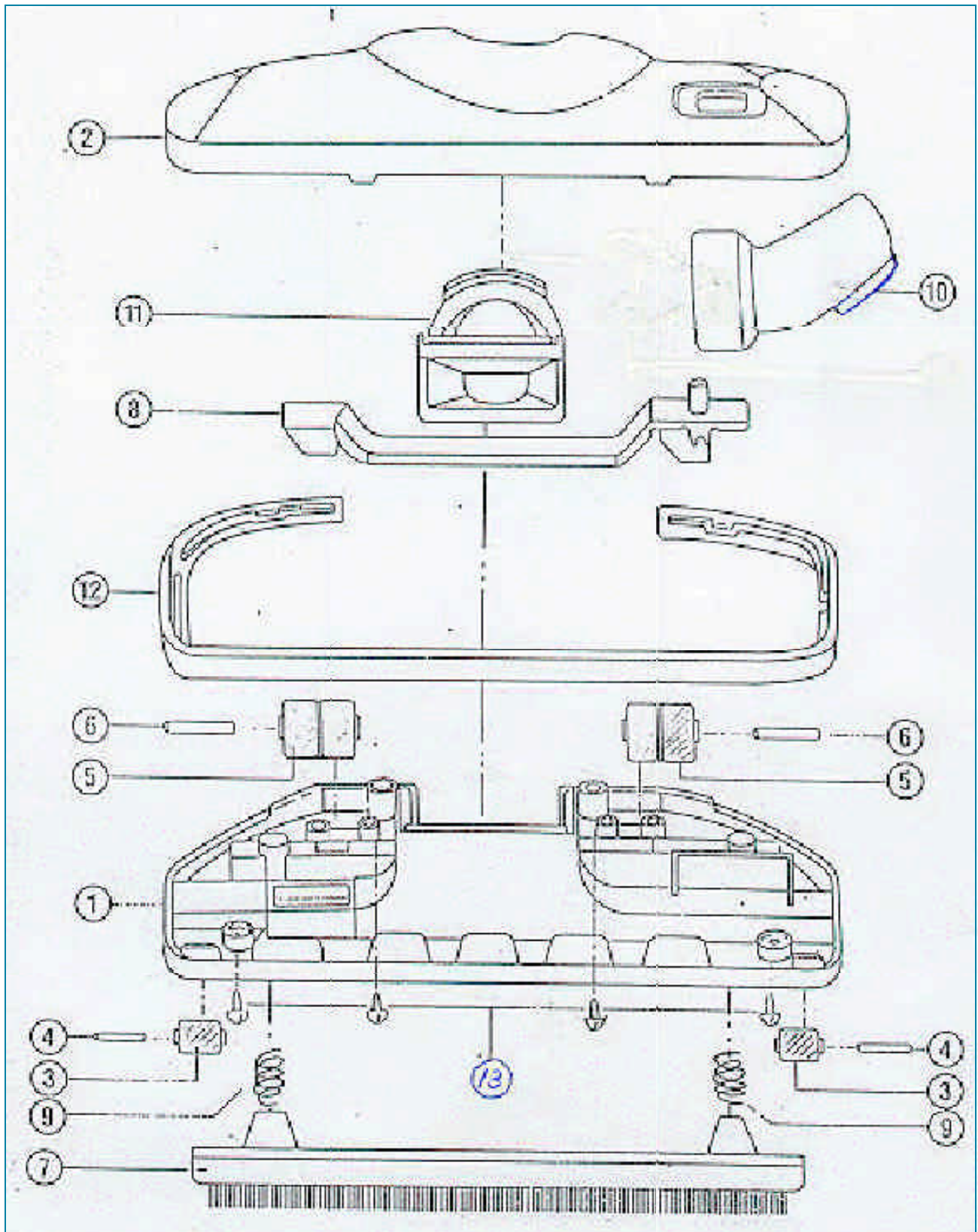
7. PIPE ASSEMBLY

RC-4085B (3624412220)



No	PART NAME	PART CODE	SPECS.	QTY
1	PIPE EXTENSION	3624408500	PP	2
2	HOLDER PIPE	3623001900	ABS	1
3	SCREW TAPPING	7121401411	T2S PAN 4 X 14 MFZN	1

8. BRUSH ASSEMBLY (3629307300)



EXPLODED VIEW AND PARTS LIST

No	PART NAME	PART CODE	SPECS.	QTY
1	BODY BRUSH	4560F90010	PP	1
2	COVER BRUSH	4560F90080	ABS	1
3	ROLLER BRUSH	4560F90020	PP	2
4	PIN BRUSH	4560F90110	SWRM	2
5	ROLLER BRUSH	4560F90090	PP	2
6	PIN ROLLER	4560F90120	SWRM	2
7	HOLDER BRUSH AS	4568B91001	ASSY	1
8	LEVER BRUSH	4560F90040	ABS	1
9	SPRING	4568B90050	HSW 3	2
10	PIPE BRUSH	3624408300	PP	1
11	NECK BRUSH	3628002400	PP	1
12	GASKET BRUSH	4560F90030	PVC-3	1
13	SCREW TAPPING	7121401411	T2S PAN 4 × 14	4