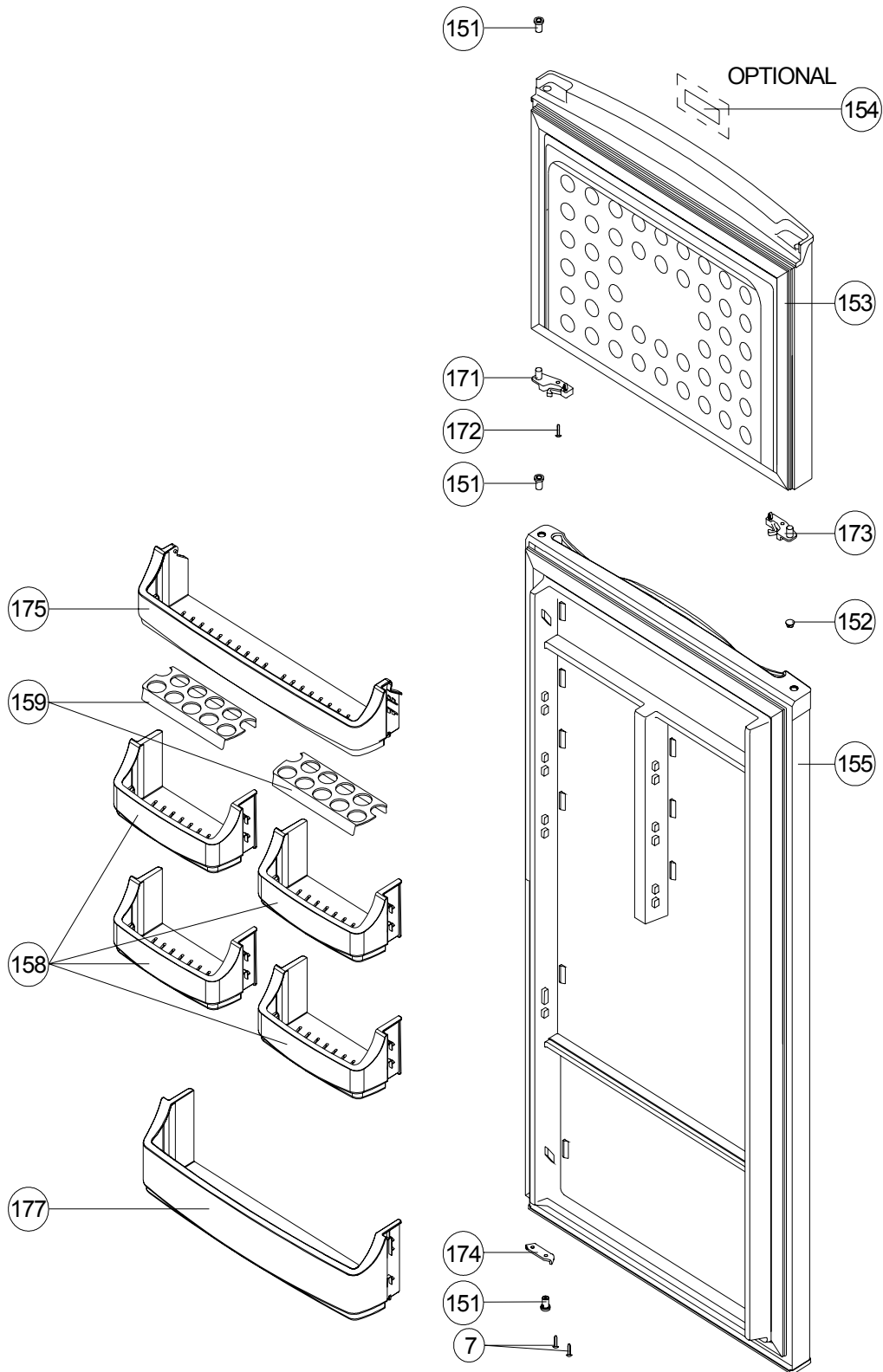





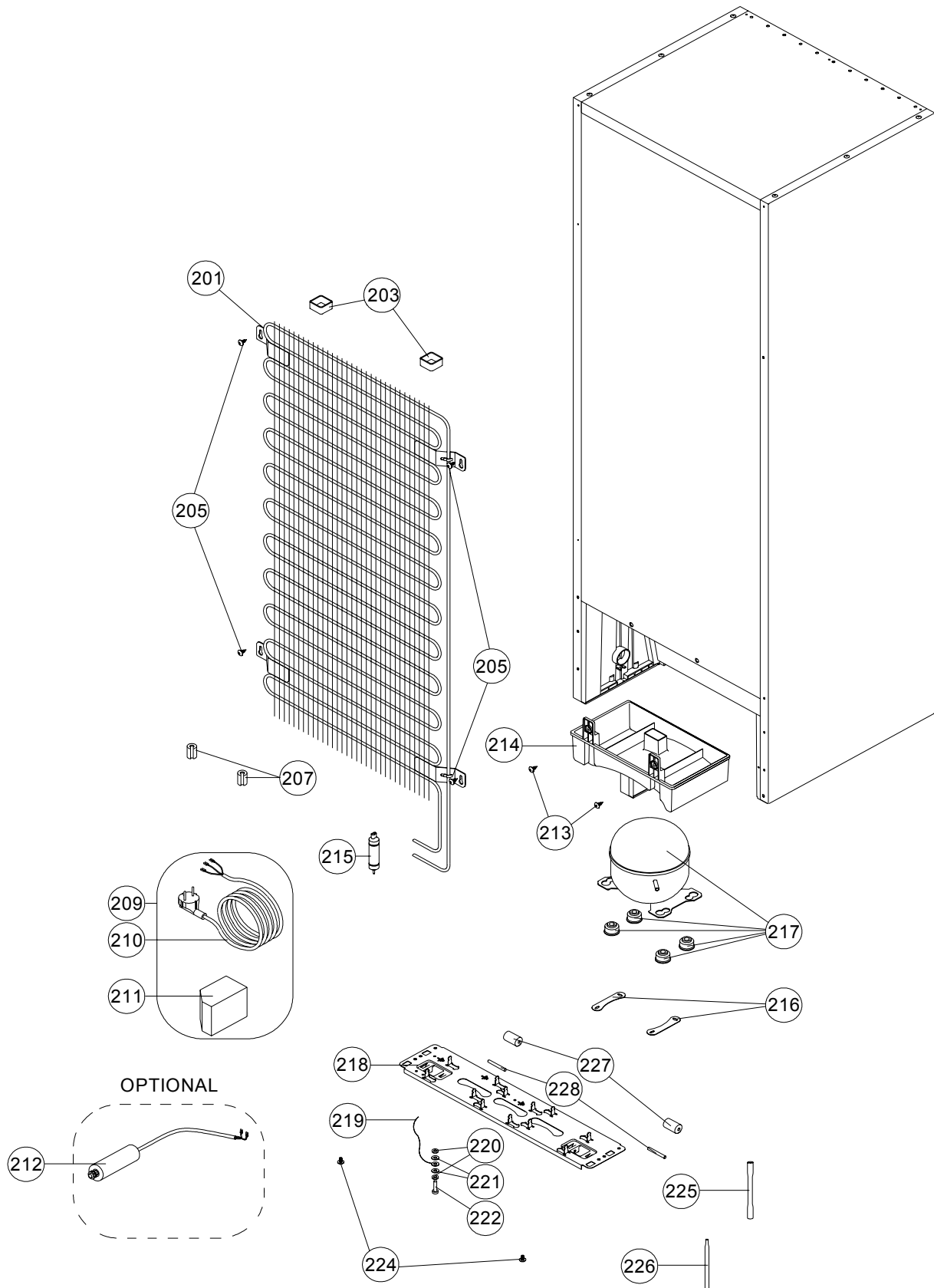
POSITION NUMBER	PART NAME
1	ASSY URT CAB/3451
2	TOP HINGE/345
6	HEAD PANEL/345
7	SCREW M5*14 YSB-F
8	SCREW ST 4.2*9.5 YSB-C
9	MIDDLE HINGE PAINTED/345
12	MIDDLE HINGE SCREW CAP (BIG)
13	DOOR SWITCH
14	TUNNEL DRAIN PLUG
15	BOTTOM HINGE/345
16	STATIONARY FOOT
17	ICE SCRAPER (OPTIONAL)
18	ICE TRAY (OPTIONAL)
19	F COMPARTMENT SHELF/345
20	SHELF TRIM F/345-2
21	THERMOSTAT BOX GR/345
22	LAMP (E14/220-240V/15W)
23	LAMP HOLDER-E14
24	HEAT REFLECTOR FOIL
26	THERMOSTAT BOX/345
27	THERMOSTAT
28	LAMP COVER/345
29	THERMOSTAT KNOB SRGF/345
30	THERMOSTAT KNOB SPRING
35	WIRING HARNESS/THERMOSTAT/345
37	R COMPARTMENT SHELF/345
39	CRISPER COVER/345
40	CRISPER COVER TRIM/345
41	CRISPER/345
58	KICK PLATE HOLDER
59	SCREW 3.5*13 DIN 7981 YSB
60	KICK PLATE/345
69	THERMOSTAT BOX CAP
70	SCREW KA 40*14 YSB-R-F-INOX
76	HEAD PANEL CAP RIGHT
77	HEAD PANEL CAP LEFT
164	DOOR HANDLE SCREW CAP



 WHITE GOODS	DOUBLE DOOR - 3451	CUSTOMER SUPPORT
	DOORASSY. PARTS LIST	

POSITION NUMBER	PART NAME
7	SCREW M5*14 YSB-F
151	BUSHING/345P
152	BUSHING CAP
153	F DOOR ASSY/3451V
154	LOGO (<i>OPTIONAL</i>)
155	R DOOR ASSY/345DM
158	EGG SHELF/345
159	EGG HOLDER(I+II)345
171	CATCHER RIGHT
172	SCREW KA 35*12 YSB-C
173	CATCHER LEFT
174	R BOTTOM STOPPER
175	CHEESE/BUTTER SHELF/345
177	BOTTLE SHELF/345

JULY 2012



JULY 2012

 WHITE GOODS	DOUBLE DOOR - 3451	CUSTOMER SUPPORT
	UNIT PARTS LIST	

POSITION NUMBER	PART NAME
201	MAIN CONDANSER/345
203	SPACER
205	SCREW ST 4.8*13 YSB-T-C
207	ANTIVIBRATION (CONDENSER)
209	POWER CORD GR
210	POWER CORD
211	OVER LOAD RELAY
212	CAPACITOR (<i>OPTIONAL</i>)
213	SCREW 4.2*9.5 DIN 7981 YSB
214	EVAPORATING TRAY/345
215	DRYER (XH9,10GR)
217	COMPRESSOR
216	COMPR. FIXING BRACKET
218	COMPR. BASEMENT/345
219	GROUNDING WIRE
220	NUT M4*3.2 DIN 934 ZNK
221	WASHER 4.3*8*0.9 DIN 6798 ZNK
222	SCREW M4*16 AKB-F
224	SCREW KA 50*14 YSB-F
225	SERVICE TUBE
226	DRYER VACUUM TUBE
227	WHEEL
228	REAR WHEEL PIN

JULY 2012