

---

# Skyworth Front-loading WM working fundamental and troubleshooting—— 440-18 serials


## CONTENTS

|  |    |
|--|----|
| 1 Product introduction.....                        | 4  |
| 1-1 Functions and specifications.....              | 4  |
| 1-2 Features.....                                  | 5  |
| 1-3 Specifications.....                            | 5  |
| 1-4 Main parts specification.....                  | 6  |
| 1-5 Notice before washing.....                     | 7  |
| 2 Structure and functions.....                     | 7  |
| 2-1 System of waterway.....                        | 7  |
| 2-2 Main control panel connector and function..... | 8  |
| 2-3 Control panel and its settings.....            | 8  |
| 2-3-1 control panel.....                           | 9  |
| 2-3-2 Setting and display.....                     | 9  |
| 2-3-3 Additional functions.....                    | 10 |
| 2-3-4 Control check.....                           | 10 |
| 2-3-5 Process of electric units check.....         | 11 |
| 2-3-6 Specification display.....                   | 12 |
| 3 06 EXPLOSIVE VIEW.....                           | 13 |
| 3-1 Cabinet cover asm.....                         | 13 |
| 3-2 Cabinet asm.....                               | 15 |
| 3-3 Outer Tub asm.....                             | 17 |
| 3-4 Inner Tub asm.....                             | 19 |
| 3-5 Control panel asm.....                         | 20 |
| 4 Disassemble steps.....                           | 21 |
| 5 Faults code.....                                 | 27 |
| 6 Common troubleshootings.....                     | 28 |
| 6-1 Circuit diagram.....                           | 28 |
| 6-2 Troubleshooting procedure.....                 | 28 |

---

# 1 Product introduction

## 1-1 Functions and specifications

|                           |   |
|---------------------------|---|
| Model                     | F60118UU  |
| Color                     | White/Silver  |
| Product picture           |  |
| Touch-button control      | √   |
| LED display               | √   |
| Automatic program         | √   |
| Smart memory              | √   |
| Tub-clean program         | √   |
| Variable temp wash        | √   |
| Adjustable spinning speed | √   |
| Stainless steel tub       | √   |
| Water draining            | √   |
| Up drain                  | √   |
| Child lock                | √   |
| Power-off automatically   | √   |
| Rated voltage             | 220-240V~50Hz   |
| Rated washing power(W)    | 250   |
| Rated spin power(W)       | 400   |
| Rated heating power(W)    | 1500  |
| Washing temp              | cold/20/40/60/90  |

---

|                         |      |
|-------------------------|------|
| Water consumption       | 48   |
| Power consumption       | 0.78 |
| Energy Efficiency Class | A++  |
| Washing ratio           | 1.03 |

## 1-2 Features

- (1) Various functions and easy operations for use
- (2) Various programme to use expediently
- (3) Washing (heating wash) and spinning are operated automatically.
- (4) High accuracy of cloth measurement and eccentric force check to enhance wash ratio.
- (5) Auto door-lock, Universal motor( lighter vibration, lower noise)
- (6) Various automatic program: Cotton, Mix,Synthetic, Baby Care,Quick15', Rinse+Spin, Spin, Duvet, Wool,Eco,Underwear, Sports,Eco, There are also different Tub Clean, Pre delay,rinse times, temp and spin speeds for choose.

## 1-3 Specifications

| Items                 | F60118UU                        |
|-----------------------|---------------------------------|
| Product size          | W595mm×D440mm×H850mm            |
| Packing size W×D×H)   | 657×490×885mm                   |
| tub size (mm)         | Φ484*263.5                      |
| Net weight            | 52kg                            |
| Washing way           | Front-loading                   |
| Spin way              | Centrifugal                     |
| Vibration way         | Friction damper+ hanging spring |
| water level check way | Frequency switch                |
| Water level           | Program shifted automatically   |
| Dry way               | NONE                            |
| Washing, spin way     | Universal Motor                 |
|                       | Universal Motor                 |
| Motor quantity        | 1                               |





|  |         |   |
|--|---------|---|
| Tub spin speed                           | washing | 50rpm                                   |
|  | spin    | 400/600/800/1000rpm                     |
| Rated washing capacity                   |         | 6.0kg                                   |
| Rated spin capacity                      |         | 6.0kg                                   |
| Longest washing time and rinse times     |         | 163min、3 times                          |
| Heating wash temp                        |         | 20/40/60/90℃                            |
| Voice                                    | Washing | 60dB                                    |
|  | Spin    | 74dB                                    |
| Water pressrure                          |         | 0.03~1MPa (0.3~1.0kgf/cm <sup>2</sup> ) |
| Parts: Manual. In-let components, Wrench |         |   |


#### 1-4 Main parts specification

| Parts name          | specification                             | Parts name           | specification  |
|---------------------|---|----------------------|--|
| body                | Material: PCM                             | outer drum           | Material: PP+glass fiber 30%   |
| back cover          | SGCC, T0.4                                | Bottom feet          | Four adjustable feet   |
| Door panel          | Material: PCM, w: 592mm h: 693mm          | Buzzer               | Electronic Buzzer  |
| Upper cover         | Material: : ABS+wood board                | temp sensor          | Resistance R(70℃)=8.514KΩ<br>5%<br>R(25℃)=49KΩ + 8.7, -8.3%<br>B Constant 3970K 2%<br>(0-100℃) |
| Inner tub           | Materia: Stainless steel                  |                      |  |
|                     | inner diameter: 483.8mm                   |                      |  |
| Power Switch        | Mechanical                                | Optional switch      | Knob   |
| Start/stop switch   | Mechanical                                | Door Lock            | PTC Door switch  |
| water level sensor  | Frequency switch                          | inlet valve          | Water pressure range:<br>0.02~1.0Mpa   |
| Drain pipe          | Bellows                                   |                      | Max flow:<br>A、Main: 14L/min<br>B、Prewash: 14L/min   |
| Drain pump          | Flat                                      |                      |  |
| Water inlet pipe    | PVC pipe 1.5m                             |                      |  |
| Washing, spin motor | Uni Motor/CIM<br>Motor: 220-240V /50/60Hz | Washing heating tube | 1500W  |

## 1-5 Notice before washing

- (1) Before washing, please adjust and tight each screw to keep the machine flat and stable for the risk of great vibration when spinning.
- (2) Please use the low bubble detergent and refer to its manufacture suggestions specially to wash the cloths.
- (3) Please check and confirm the suitable temp from clothes label before heating.
- (4) Caution:

|  |  |
|--|--|
|  <b>WARNING</b>     |  |
| <br><b>Danger</b>   | <ul style="list-style-type: none"><li>● <b>May cause the risk of electric shock or fire</b><br/>Please do not place the washing machine in damp places like the bathroom, or in weather-beaten places.<br/>It needs to be safely grounded during being used. After using, please Unplug the power cord and cut off the power.</li></ul>  |
| <br><b>Danger</b>  | <ul style="list-style-type: none"><li>● <b>May cause the risk of being injured</b><br/>Before WM stopping running, don't put your hands into dewatering cylinder even though the cylinder spin slowly, because it may cause injury due to clothes wrapped in arms. Pay special attention to the danger of children</li></ul>   |
| <br><b>Danger</b> | <ul style="list-style-type: none"><li>● <b>May cause the risk of fire</b><br/>Please use special ground-able wire socket of 220~ 240, more than 10A. If share sockets with other electrical appliances, it may cause fire due to heating.</li><li>● <b>May cause the risk of explosion or fire</b><br/>Please do not put in items carrying with kerosene, gasoline, thinner, alcohol and other chemicals, or wash clothes which may cause fire due to heating. Please do not place beside the WM with flammable items.</li></ul> |

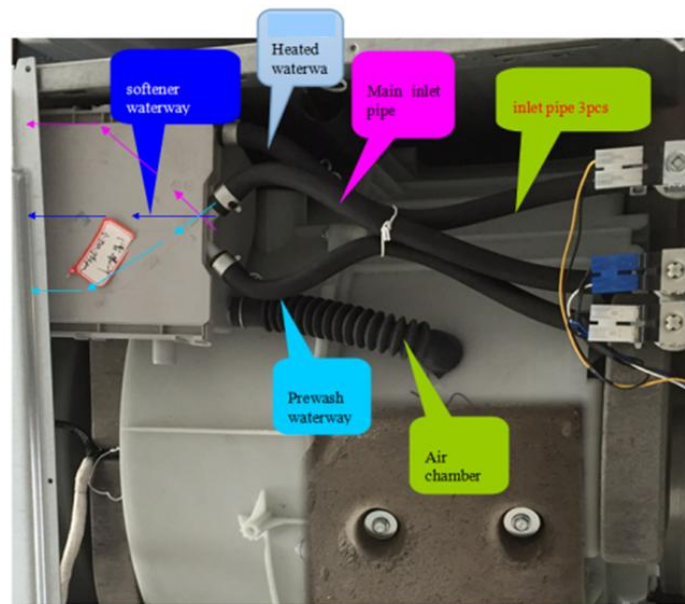
|   |   |
|---|---|
| <br><b>Danger</b>  | <ul style="list-style-type: none"><li>● <b>May cause the risk of children going inside and injured</b><br/>Don't let people like children use WM, who are not familiar with operation of WM. It may cause children go inside and lead to injury, etc.</li></ul> |
| <b>WARM PROMPT</b>  |   |
| <ul style="list-style-type: none"><li>● Installation, Before using, please read the instructions carefully and remove the transport screws behind the machine.</li><li>● To avoid overflow and burns, please confirm the water level in the tub before opening the door when adding items or power cut.</li><li>● In the process of running don't put the items on the top cover, the vibration may lead to items damage.</li></ul> |   |
| <b>Attentions when using mesh laundry bags</b>  |   |
| <ul style="list-style-type: none"><li>● Do not use mesh laundry bags when washing items such as blankets, cotton quilt (it may cause abnormal vibration).</li><li>● Do not put too much clothing into the mesh laundry bags.</li></ul>  |   |

## 2 Structure and functions

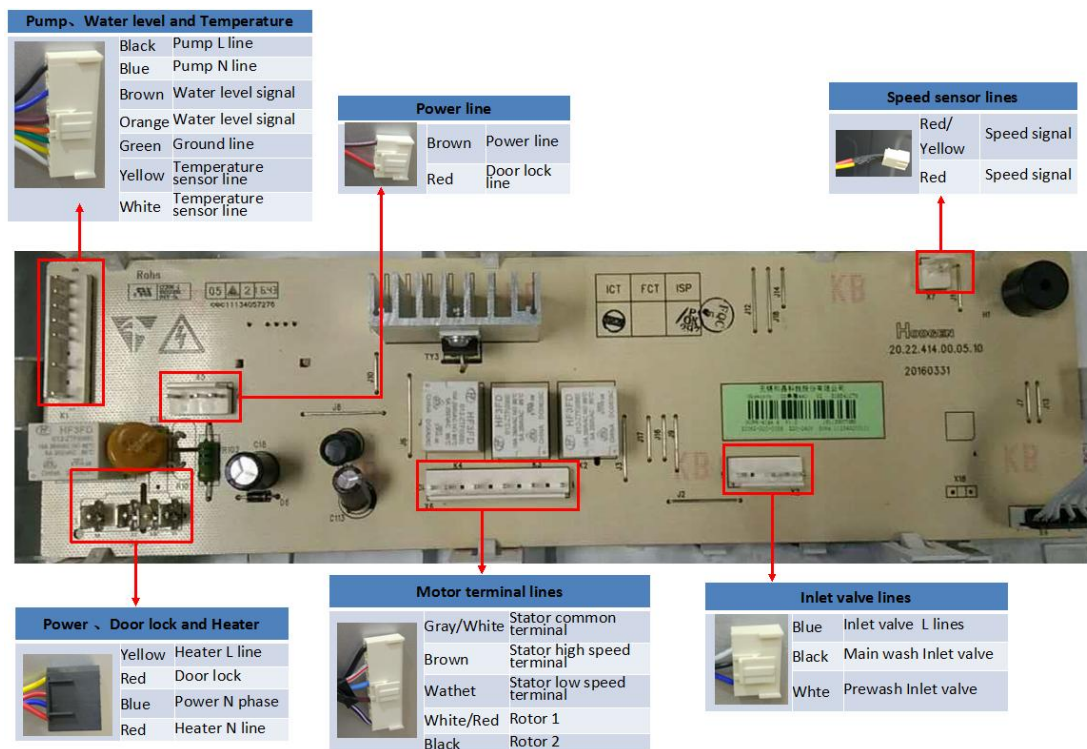
### 2-1 System of waterway

Water inlet: inlet pipe→inlet valve→inlet hose→detergent box→detergent box bellows  
→outer tub

Dewatering: inner tub→outer tub→pump→bellows→drain pipe

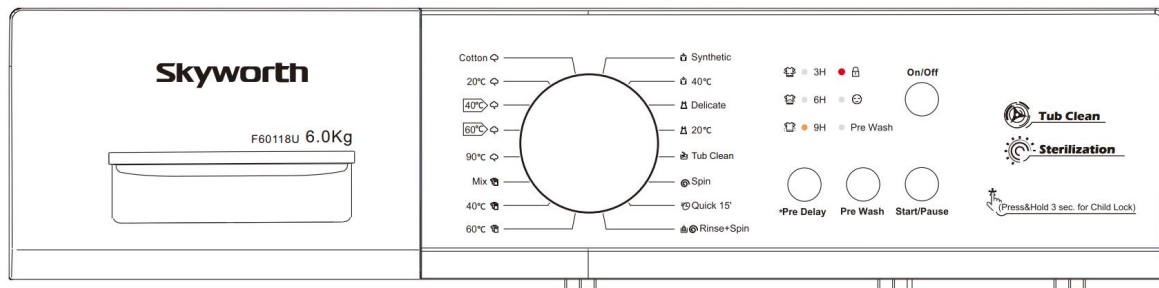


## 2-2 Main control panel connector and function



## 2-3 Control panel and its settings

### 2-3-1 control panel



F60118UU Control Panel( Image show here is indicative only,Actual product you receive may differ)

### 2-3-2 Setting and display

**Power:** Press it to the original program; Procedure finished, power off automatically

**Start/Pause:** Press Start button to start operation; Press Pause button to stop temporarily

**Knob:** Rotate it to select additional functions as following:

**Model:** F60118UU

| program   | temperature (°C) | rinse (times) | time (m) | revolution (rpm) | maximum load | Cloth type                                   |
|---|------------------|---------------|----------|------------------|--------------|--|
| Cotton  | Cold             | 2             | 88       | 800              | rated        | general cotton fabrics                       |
| 20°C  | 20               | 2             | 93       | 800              |              |  |
| 40°C  | 40               | 2             | 254      | 1000             |              |  |
| 60°C  | 60               | 2             | 272      | 1000             |              |  |
| 90°C  | 90               | 2             | 149      | 800              |              |  |
| Mix   | Cold             | 2             | 66       | 800              | ≤4kg         | cotton fabrics/<br>cellulose compound        |
| 40°C  | 40               | 2             | 78       | 800              |              |  |
| 60°C  | 60               | 2             | 95       | 800              |              |  |
| Synthetic   | Cold             | 2             | 61       | 800              | ≤3kg         | cellulose compound                           |
| 40°C  | 40               | 2             | 73       | 800              |              |  |
| Delicate  | Cold             | 2             | 56       | 800              | ≤3kg         | Gauze/Silk<br>Fabric                         |
| 20°C  | 20               | 2             | 59       | 800              |              |  |
| Tub Clean   | 60               | 2             | 78       | 800              | —            | Normal<br>(Intensive, Time Save)             |
| Spin  | —                | —             | 14       | 800              | rated        | cotton fabrics/cellulose<br>compound         |
| Quick 15'   | Cold             | 1             | 15       | 800              | ≤2kg         | not too dirty and frequently<br>used clothes |
| Rinse+Spin  | Cold             | 2             | 34       | 800              | rated        | cotton fabrics/<br>cellulose compound        |
| <b>Note:</b> 40°C 60°C is the standard energy efficiency program. |                  |               |          |                  |              |  |

**Pre-delay:** When use “Pre Delay” function for washing, the delay time is 3hours、6hours、9hours、12hours、15hours、18hours .

**Door Lock:** When operating, door lock effects automatically and the button is lighting ; Press “Start/Pause”, tub stops for 2 mins, door is unlocked;High-temp and high water level

---

working, door is locked;

Child Lock: If you want to start child lock function, you should press “Pre Delay” button for 3 seconds ; To unlock the lock, you can press “Pre Delay” button for 3 seconds during any programs.

Tub-clean: Press Delay+Temp. for more than 3 seconds to start tub clean program

### 2-3-3 Additional functions

Power-off automatically: Finishing washing program about 10min, the machine will be powered-off automatically.

Eccentricity check: When spinning, the machine is loaded to check the eccentricity and find the spinning track automatically.

Defoam: When washing and spinning, the machine will check the foam and handle it accordingly.

Smart dewatering: When program is finished, the machine will check the water level whether it exceeds the inner tub or not. If yes, it will open the drain valve and let it comes down to the inner tub and closed the valve automatically.

Smart unlock: After program finished, if the water level is too high, drain pump will start to work until the level reaches the right line and it is unlocked. If the inner temp is too high, it will be unlocked when the temp comes down to the safe and waits for 1mins.

### 2-3-4 Control check

Abnormal heated pipe check: When the machine doesn't work properly, broken or short circuit of the heated pipe will be checked and set the alarm.

Door lock check: Any abnormal action will cause the alarm when the door is locked or unlocked.

Speed check: When motor both runs and stops, the machine will alarm if the speed is abnormal.

Water temp sensor check: Abnormal sensor will cause an alarm.

Water level check: When the level is higher than overflow level, the machine will alarm

### 2-3-5 Process of electric units check

Function application s of LQC



---

- When plug-in, pressing Pre Delay, Prewash and ON/OFF at the same time means LQC effected

- Under this condition, only ON/OFFr, Start/Pause and Pre-delay are available

- Under this condition, press ON/OFF means power-off; press Start/Pause means units test as following steps; Press Pre Delay within 5s means Life Test effects.

Test each units function by following steps:

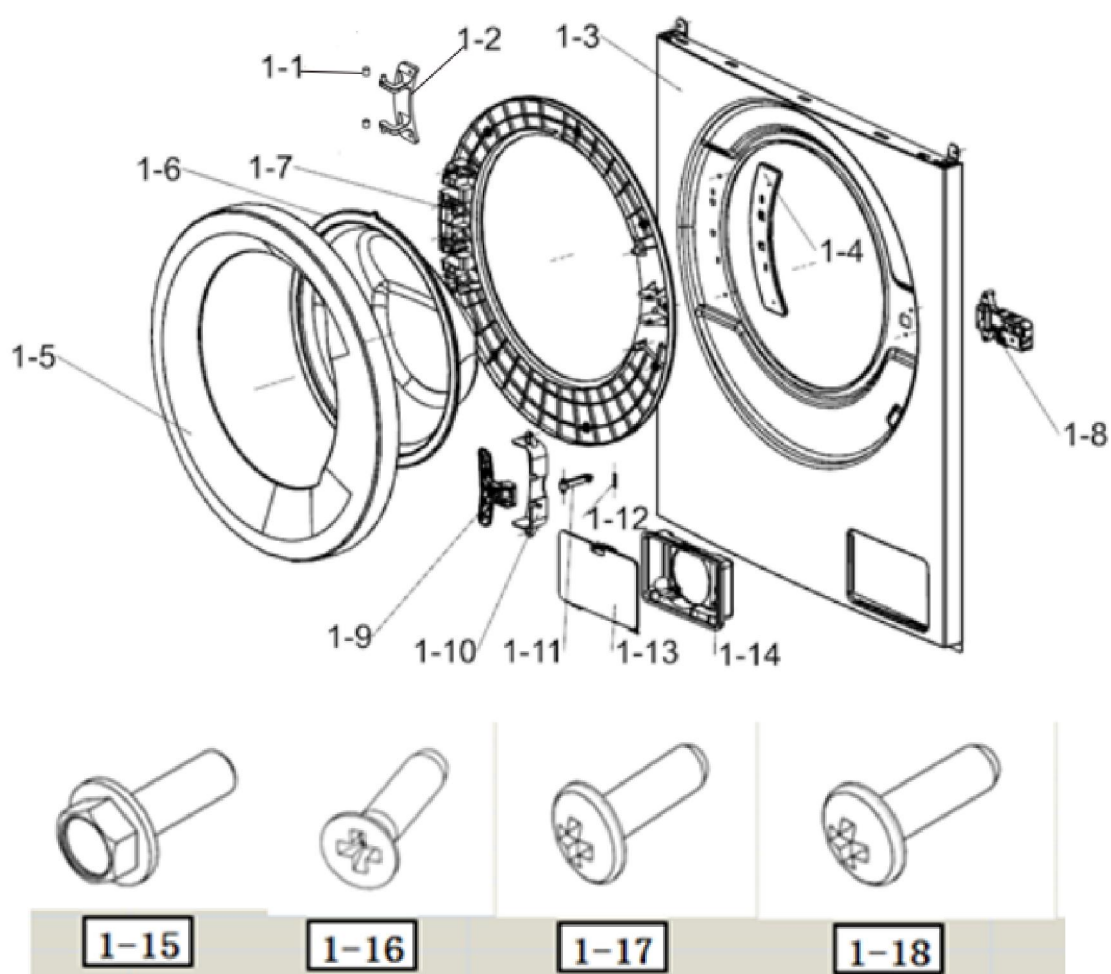
| ★Function application s of LQC : |  |   |  |
|----------------------------------|--|---|--|
| Steps                            | Function   | Display   | Note   |
| 1                                | Inject water,<br>worker check the<br>structure   | /   | The machine<br>hasn' t power-on<br>yet   |
| 2                                | Enter LQC  | All lights shine 2s<br>continuously                     | Press the Pre<br>Delay , Prewash<br>and ON/OFF<br>together, then<br>power on to move<br>the next step. |
| 3                                | Check the<br>programs changes<br>ande versions   | it shows program changes-2S,<br>and 2S of versions next | Move to the next<br>step-Whether all<br>LED lights are OK?   |
| 4                                | Check whether all<br>LED lights are OK;<br>check all using<br>programs whether<br>is ok( No need of<br>draining) | Door lock light is on                                   | Press the Start<br>button to continue  |
| 5                                | Inlet test of<br>prewash valve   | Door lock light is on                                   | press "Start" to<br>next step  |
| 6                                | Inlet test of wash<br>valve  | Door lock light is on                                   | press "Start" to<br>next step  |
| 7                                | Inlet test of heated<br>water valve ,  | Door lock light is on ( except<br>for the alarm light ) | press "Start" to<br>next step  |
| 8                                | Inlet confirm of<br>Rinse (two valves)   | Door lock light is on                                   | press "Start" to<br>next step  |
| 9                                | Heater test  | Door lock light is on                                   | press "Start" to   |

---

|    |   |                       |   |
|----|---|-----------------------|---|
|    | (power-on 5s)                           |                       | next step   |
| 10 | Motor spinning with water test          | Door lock light is on | Firstly rotate in 50 speed in clockwise for 5s, then stop for 3s, later change automatically in anticlockwise in 400 speed for 40s, afterwards move to the next step , the motor stopped, and pump started to drain. All situation over could start the next step |
| 11 | Drain pump test                         | Door lock light is on | press "Start" to next step( The water should be drained totally, otherwise when the level is over 2mm, it will alarm.   |
| 12 | Motor test with no water and high speed | Door lock light is on | Drain totally, then move to the next step.  |
| 13 | Motor test with no water and high speed | Door lock light is on | press "Start" to next step  |
| 14 | LQC test finished                       | All lights are off    | power-off   |

### 3 EXPLOSIVE VIEW

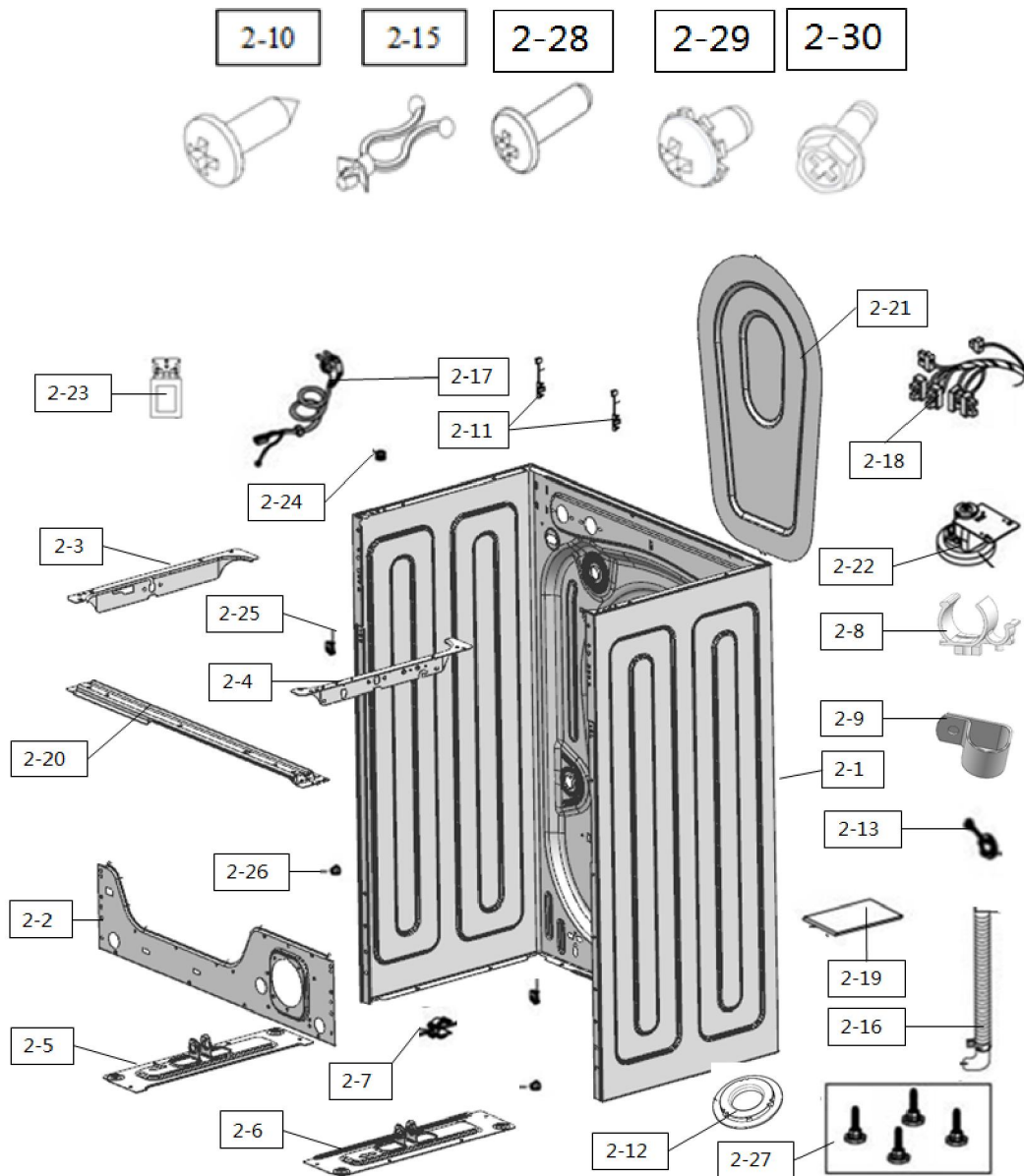
#### 1. Cabinet cover asm



| NO.  | Chinese Name | English Name       | Quantity | Unit | Note |
|------|--------------|--------------------|----------|------|------|
| 1-1  | 门铰链帽子        | Holder             | 2        | PC   |      |
| 1-2  | 门铰链          | Door hinge         | 1        | PC   |      |
| 1-3  | 前门板-手动门锁     | Cabinet Cover      | 1        | PC   |      |
| 1-4  | 门加强板         | Door holder        | 1        | PC   |      |
| 1-5  | 外门           | Outer door         | 1        | PC   |      |
| 1-6  | 门玻璃          | Door glass         | 1        | PC   |      |
| 1-7  | 内门           | Inner Door         | 1        | PC   |      |
| 1-8  | 门锁           | Door switch        | 1        | PC   |      |
| 1-9  | 门把手          | Door handle        | 1        | PC   |      |
| 1-10 | 门把手支架        | Door handle holder | 1        | PC   |      |
| 1-11 | 门卡勾          | Latch hook         | 1        | PC   |      |
| 1-12 | 门销           | Pin                | 1        | PC   |      |
| 1-13 | 排水盖板-欧系      | Cap cover          | 1        | PC   |      |
| 1-14 | 排水盖板盒子-欧系    | Case               | 1        | PC   |      |

|      |       |       |    |    |  |
|------|-------|-------|----|----|--|
| 1-15 | 门铰链螺栓 | Bolt  | 2  | PC |  |
| 1-16 | 螺钉    | Screw | 12 | PC |  |
| 1-17 | 螺钉    | Screw | 6  | PC |  |
| 1-18 | 螺钉    | Screw | 2  | PC |  |

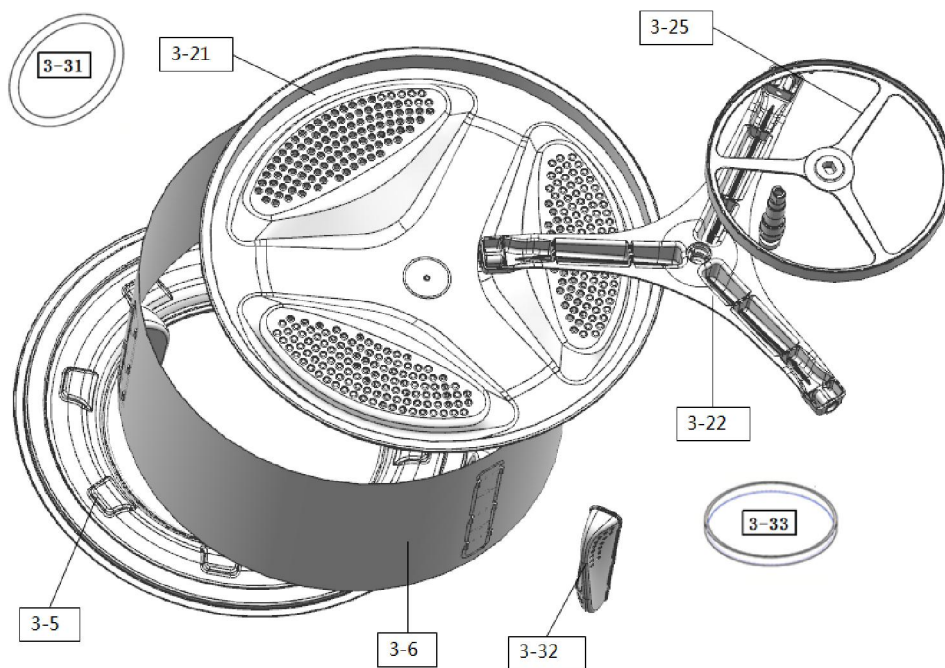
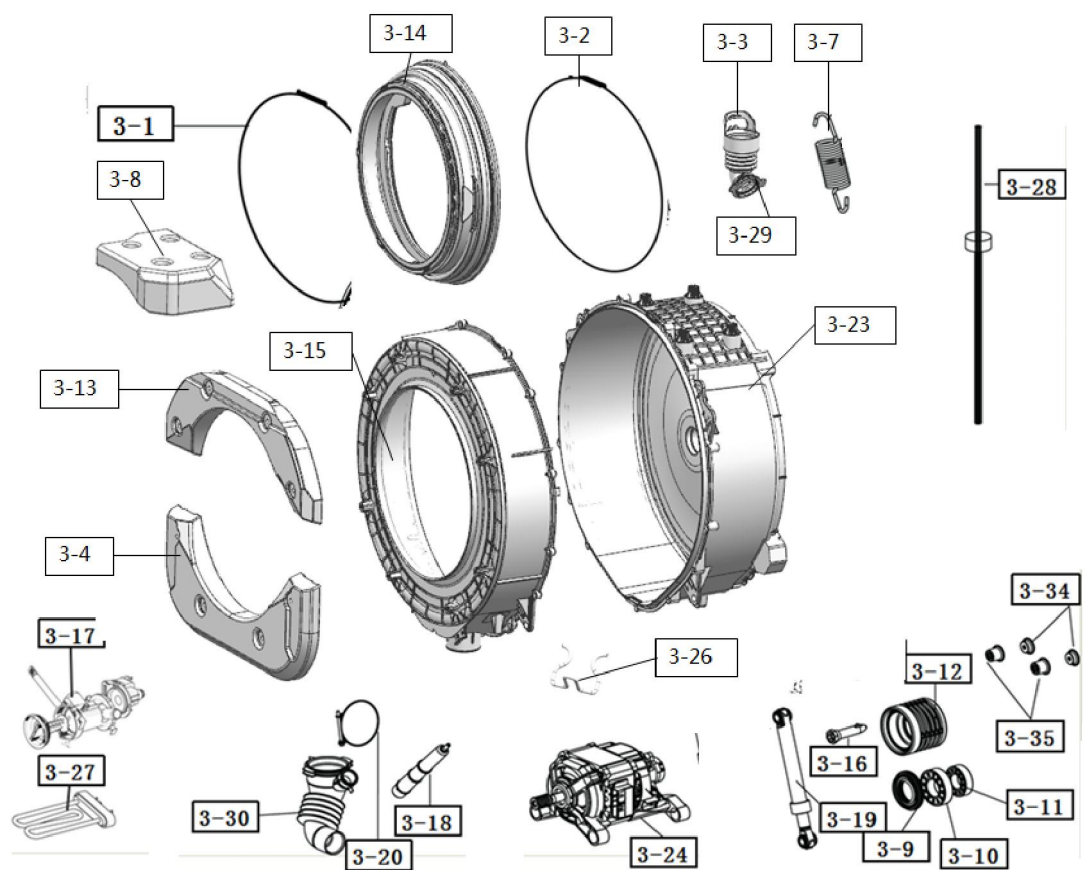
## 2. Cabinet asm

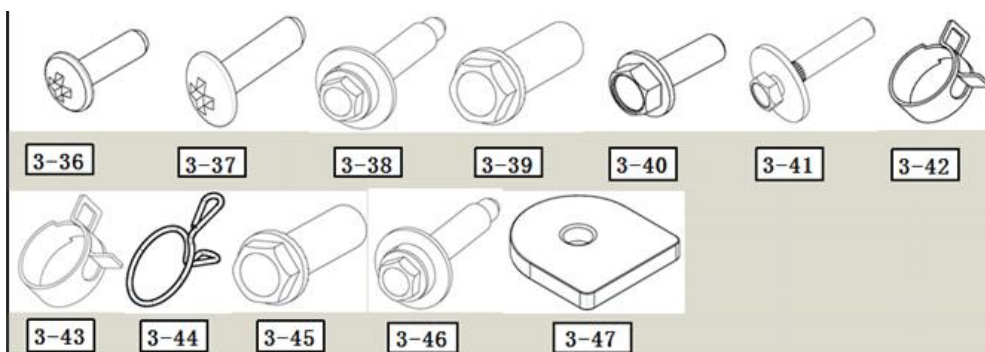


| NO. | Chinese Name | English Name     | Quantity | Unit | Note |
|-----|--------------|------------------|----------|------|------|
| 2-1 | 箱体 PCM 钢板    | Cabinet          | 1        | PC   |      |
| 2-2 | 下支架          | Low Frame        | 1        | PC   |      |
| 2-3 | 上撑板-左        | Top bracket-Left | 1        | PC   |      |

|      |              |                    |    |    |  |
|------|--------------|--------------------|----|----|--|
| 2-4  | 上撑板-右        | Top bracket-Right  | 1  | PC |  |
| 2-5  | 下撑板-左        | Base bracket-Left  | 1  | PC |  |
| 2-6  | 下撑板-右        | Base bracket-Right | 1  |    |  |
| 2-7  | 排水管卡         | Holder             | 1  | PC |  |
| 2-8  | 排水管卡         | Holder             | 1  | PC |  |
| 2-9  | 排水管卡         | Holder             | 1  | PC |  |
| 2-10 | 螺钉           | Screw              | 1  | PC |  |
| 2-11 | 吊簧卡座         | Holder             | 2  | PC |  |
| 2-12 | 排水管卡套        | Holder             | 1  | PC |  |
| 2-13 | 运输螺栓帽        | Holder             | 4  | PC |  |
| 2-14 | 铁线扎          | Tread              | 1  | PC |  |
| 2-15 | 八字线卡         | Holder             | 4  | PC |  |
| 2-16 | 排水管          | Pump hose          | 1  | PC |  |
| 2-17 | 电源线（低端）      | Power Cord         | 1  | PC |  |
| 2-18 | 主线束（低端倒置400） | Main harness       | 1  | PC |  |
| 2-19 | 箱体海绵(侧)      | Damper             | 1  | PC |  |
| 2-20 | 上支架          | Panel Frame        | 1  | PC |  |
| 2-21 | 后盖板          | Back Cover         | 1  | PC |  |
| 2-22 | 水位传感器        | Pressure switch    | 1  | PC |  |
| 2-23 | 滤波器（低端 倒置）   | Noise filter       | 1  | PC |  |
| 2-24 | 上盖板卡         | Holder             | 1  | PC |  |
| 2-25 | 前门板销子        | Holder             | 2  | PC |  |
| 2-26 | 前门板销子        | Holder             | 2  | PC |  |
| 2-27 | 调整脚          | Transport Bolt     | 4  | PC |  |
| 2-28 | 螺钉           | Screw              | 6  | PC |  |
| 2-29 | 地线螺钉         | Screw              | 2  | PC |  |
| 2-30 | 螺钉           | Screw              | 10 | PC |  |

### 3. Tub asm

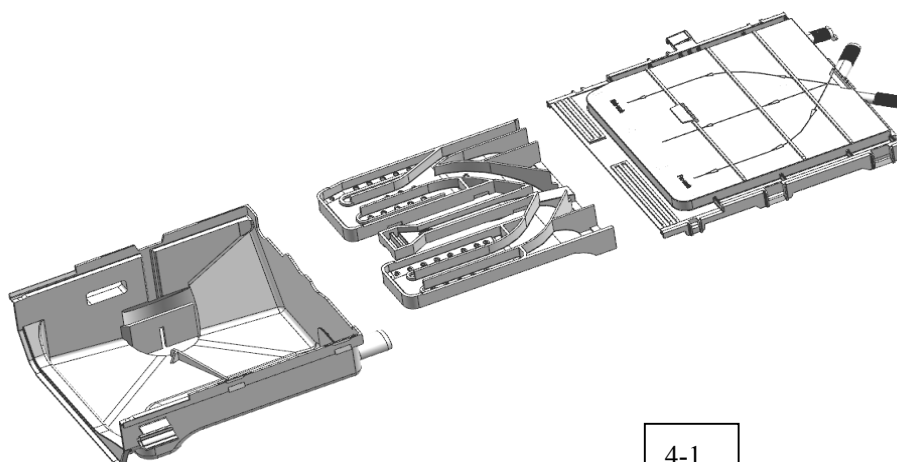




| NO.  | Chinese Name | English Name     | Quantity | Unit | REMARKS |
|------|--------------|------------------|----------|------|---------|
| 3-1  | 门密封圈卡簧(小)    | Clamp            | 1        | PC   |         |
| 3-2  | 门密封圈卡簧(大)    | Clamp            | 1        | PC   |         |
| 3-3  | 洗涤剂盒波纹管      | Hose             | 1        | PC   |         |
| 3-4  | 前平衡块-3.6kg   | Balance weight   | 1        | PC   |         |
| 3-5  | 内桶前盖         | Inner tub,front  | 1        | PC   |         |
| 3-6  | 内桶桶身不锈钢钢板    | Inner Tub,center | 1940     | G    |         |
| 3-7  | 吊簧           | Spring           | 2        | PC   |         |
| 3-8  | 上平衡块-9.5kg   | Balance weight   | 2        | PC   |         |
| 3-9  | 水封           | Water seal       | 1        | PC   |         |
| 3-10 | 轴承 6206      | Bearing          | 1        | PC   |         |
| 3-11 | 轴承 6205      | Bearing          | 1        | PC   |         |
| 3-12 | 轴盘           | Bearing housing  | 1        | PC   |         |
| 3-13 | 前平衡块-5.4kg   | Balance weight   | 1        | PC   |         |
| 3-14 | 门密封圈-440     | Seal             | 1        | PC   |         |
| 3-15 | 外桶桶盖 PP+GF15 | Tub cover        | 1        | PC   |         |
| 3-16 | 减震销          | Damper pin       | 2        | PC   |         |
| 3-17 | 排水泵          | Pump             | 1        | PC   |         |
| 3-18 | 气室           | Air chamber      | 1        | PC   |         |
| 3-19 | 减震器          | Damper           | 2        | PC   |         |
| 3-20 | 排水波纹管卡簧      | Clamp            | 1        | PC   |         |
| 3-21 | 内桶桶底         | Inner Tub,back   | 1        | PC   |         |
| 3-22 | 三脚架          | Spider           | 1        | PC   |         |
| 3-23 | 外桶桶底 PP+GF15 | Tub outer        | 1        | PC   |         |
| 3-24 | 串激电机         | Universal Motor  | 1        | PC   |         |
| 3-25 | 皮带轮          | Belt pulley      | 1        | PC   |         |
| 3-26 | 加热器支架        | Heater bracket   | 1        | PC   |         |

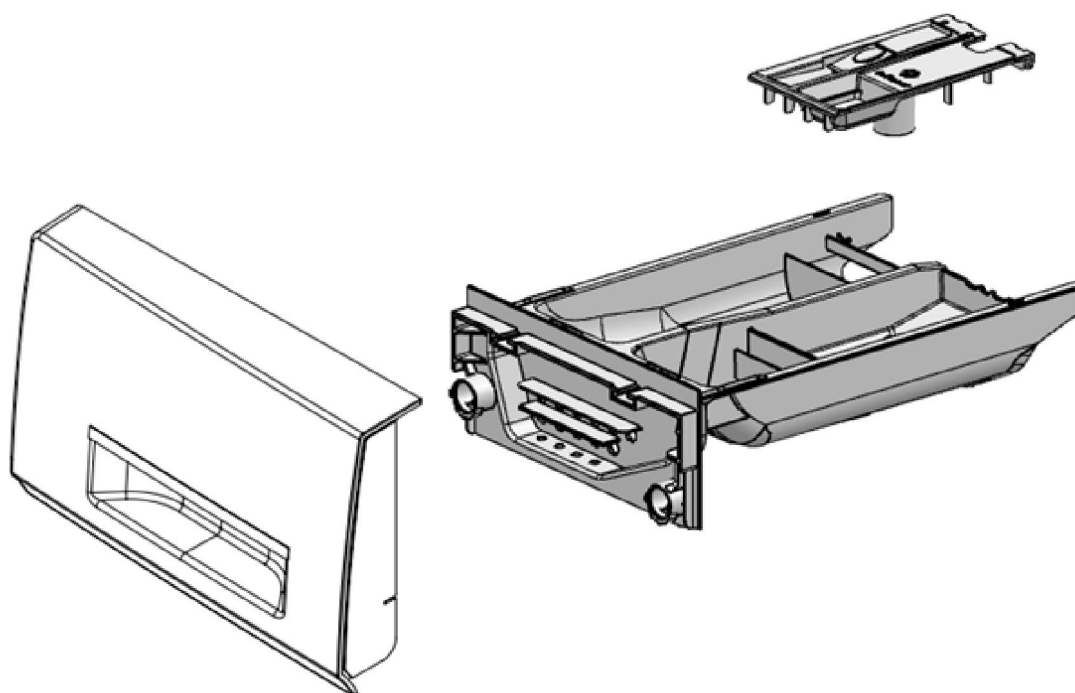
|      |           |        |    |    |  |
|------|-----------|--------|----|----|--|
| 3-27 | 加热器       | Heater | 1  | PC |  |
| 3-28 | 水位传感器管子   | Hose   | 1  | PC |  |
| 3-29 | 洗涤剂盒波纹管管夹 | Clamp  | 1  | PC |  |
| 3-30 | 排水波纹管     | Hose   | 1  | PC |  |
| 3-31 | 密封圈       | Seal   | 1  | PC |  |
| 3-32 | 提升筋       | Lifter | 3  | PC |  |
| 3-33 | 皮带        | Belt   | 1  | PC |  |
| 3-34 | 串激电机脚套    | Cover  | 2  | PC |  |
| 3-35 | 串激电机脚套    | Cover  | 2  | PC |  |
| 3-36 | 螺钉        | Screw  | 7  | PC |  |
| 3-37 | 螺钉        | Screw  | 3  | PC |  |
| 3-38 | 定子螺栓      | Screw  | 6  | PC |  |
| 3-39 | 皮带轮螺栓     | Bolt   | 1  | PC |  |
| 3-40 | 外桶螺栓      | Bolt   | 12 | PC |  |
| 3-41 | 平衡块螺栓     | Bolt   | 13 | PC |  |
| 3-42 | 气室片簧      | Clamp  | 1  | PC |  |
| 3-43 | 排水泵片簧     | Clamp  | 1  | PC |  |
| 3-44 | 洗涤剂盒管夹    | Clamp  | 4  | PC |  |
| 3-45 | 三脚架螺栓     | Bolt   | 3  | PC |  |
| 3-46 | 串激电机螺栓    | Screw  | 2  | PC |  |
| 3-47 | 串激电机螺栓垫片  | Gasket | 2  | PC |  |

#### 4. Dispenser asm/Drawer panel asm/Top plate asm/Control panel asm

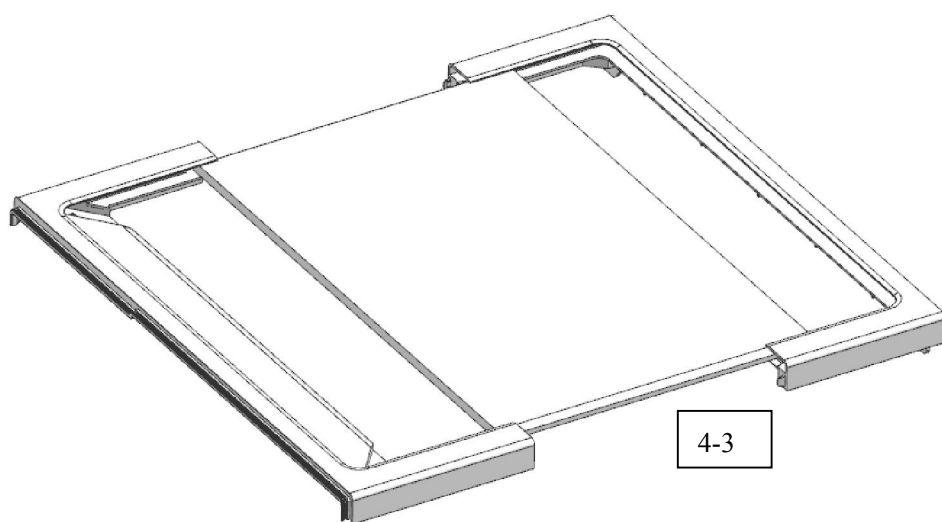


4-1

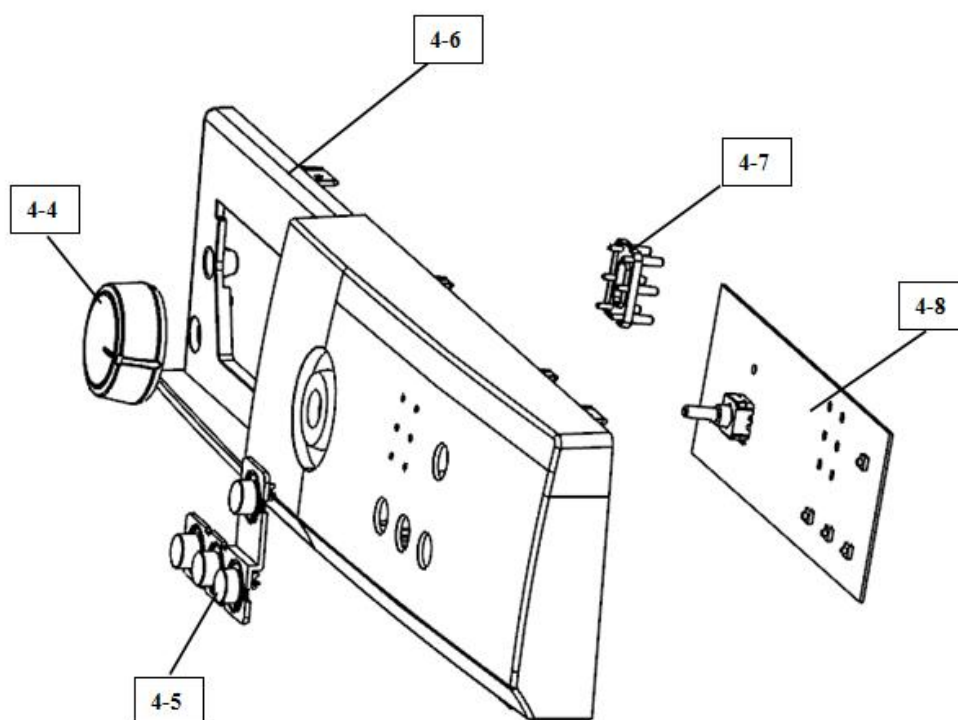




4-2



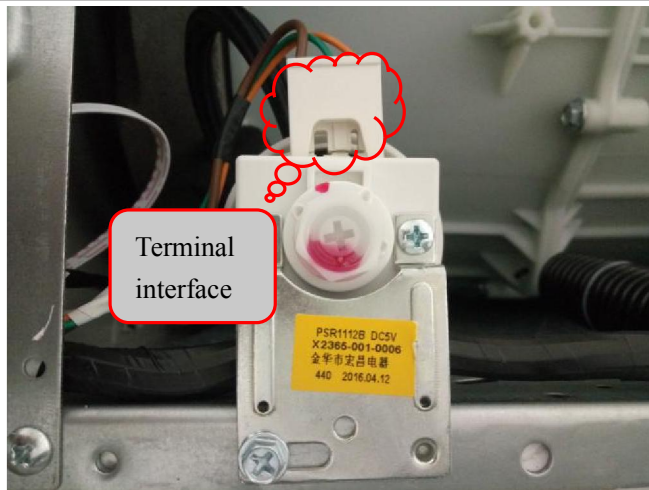
4-3



| NO. | Chinese Name | English Name          | Quantity | Unit | Note |
|-----|--------------|-----------------------|----------|------|------|
| 4-1 | 洗涤剂盒组件       | Dispenser assembly    | 1        | PC   |      |
| 4-2 | 抽屉面板组件       | Drawer panel assembly | 1        | PC   |      |
| 4-3 | 上盖板          | Top plate assembly    | 1        | PC   |      |
| 4-4 | 旋钮           | Knob                  | 1        | PC   |      |
| 4-5 | 按键           | Button                | 1        | PC   |      |
| 4-6 | 控制面板         | Control panel         | 1        | PC   |      |
| 4-7 | 导光柱          | Guide light column    | 1        | PC   |      |
| 4-8 | 电脑板          | PWB assembly          | 1        | PC   |      |

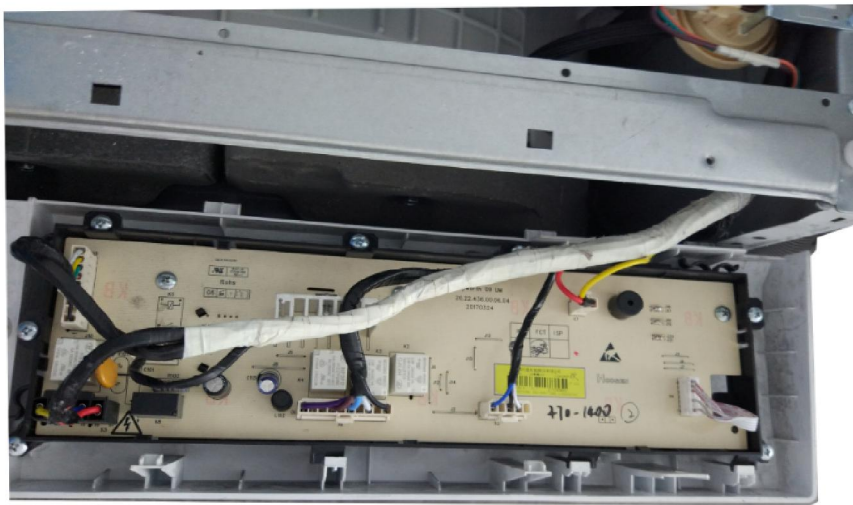
#### 4 Disassemble steps

| Related pictures   | Disassemble steps   |
|--|---|
|    | Remove 2 screws from the fixed upper cover.   |
|   | Push the cover and take it away as the arrow direction shows                                  |
|  | Remove 2 screws fixed from the control panel  |
|   | <p>1.Pull out the detergent parts</p> <p>2.Remove 2 screws fixed from the detergent parts</p> |



Terminal interface

- 1.Pull out the terminal of PWB and take it away.
- 2.Split the control panel:remove screws fixed from the PWB panel.
- 3.pry the knob parts.
- 4.Take out the display panel, button parts and the frame parts



- The replaced units as follows
1. detergent box parts;
  - 2.water inlet pipe;
  - 3.double inlet valve;
  - 4.single inlet valve;
  - 5 air pipe
  - 6.water level sensor
  - 7.balancing weight(up)
  - 8.balancing spring and the base



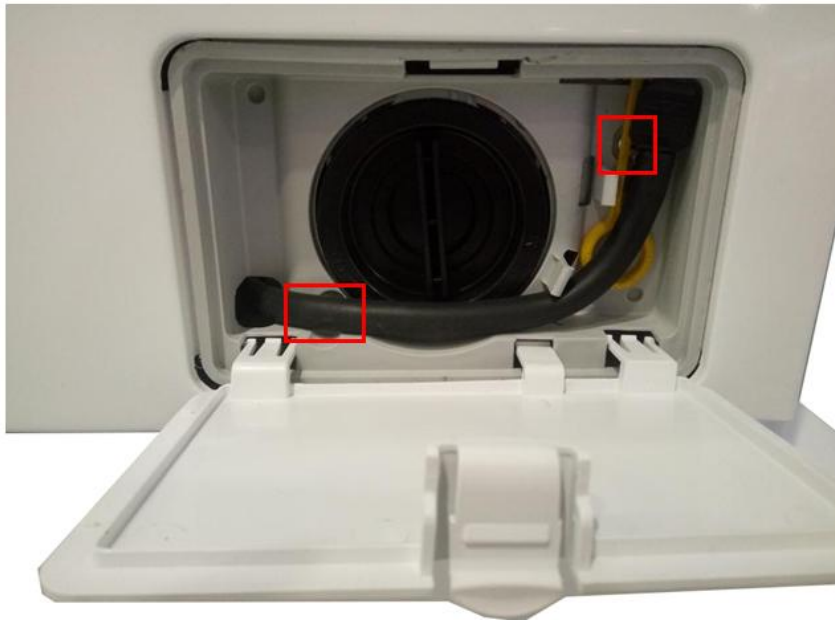
Remove 2 screws fixed from the door and take the parts away.



1.Remove the spring coil from the door seal.

2.Remove 2 screws from the latch hook





Open the cap cover, remove 2 screws fixed from it, take the cover and case away.



1. Remove 6 screws from the door cover,  
2. Take the front door cover as the arrow direction

|   |   |
|---|---|
|  | <p>replaceable :</p> <ol style="list-style-type: none"><li>1.door seal</li><li>2.spring coil</li><li>3.balance weight(front left)</li><li>4.balance weight(front right)</li><li>5.drain pump;</li><li>6.drain pipe parts;</li><li>7.door switch</li></ol> |
|  | <p>Remove 4 screws from the back cover and take the cover away.</p>   |



Replacable :  
1.Universal Motor  
( or Belt pulley ) ;  
2.Heater parts ;



## 5 Faults code

| Phenomenon                    | Indicator light state |        |        |        | check points  | solutions   |
|-------------------------------|-----------------------|--------|--------|--------|---|---|
|                               | Child Lock            | Wash   | Rinse  | Spin   |   |   |
| Water inflow                  | flash                 | light  | quench | quench | <ul style="list-style-type: none"> <li>● Check if turn the tap off?</li> <li>● Is the water supply cut off or the water pressure too low?</li> <li>● Are the water inlet pipes frozen?</li> <li>● Are the filters blocked?</li> </ul>             | Open the stopcock.<br>Please wait.<br>Use hot water to unfreeze the pipes.<br>Take out the filters and clean them.  |
| Water outflow                 | flash                 | quench | light  | quench | <ul style="list-style-type: none"> <li>● Are the outlet pipes placed too highly?</li> <li>● Are the outlet pipes frozen?</li> <li>● Are the outlet pipes blocked?</li> <li>● Are the floor drain blocked?</li> </ul>                              | Please put away the outlet pipes and make sure the height within 1M.<br>Use hot water to unfreeze the pipes.<br>Take out the foreign matter and dredge the pipes.<br>Clean the floor drain. |
| Door trouble                  | flash                 | quench | quench | light  | <ul style="list-style-type: none"> <li>● Make sure if start the washer without closing the door well.</li> </ul>  | Make sure the door truly closed   |
| Spin trouble                  | flash                 | light  | quench | light  | <ul style="list-style-type: none"> <li>● Check if disassemble the carriage bolt?</li> <li>● Is the machine placed steadily?</li> <li>● Are the clothes too small or light?</li> <li>● Are the locknuts on under the feet tightened up?</li> </ul> | Disassemble the carriage bolt.<br>Place the machine on a steady ground.<br>Add more clothes.<br>Tighten up the locknuts.  |
| Continuous water              | flash                 | light  | light  | quench | Close the stopcock, pull the plug and , entrust the after-sales service.  |   |
| No heating                    | flash                 | light  | light  | light  | Please pull the plug and entrust the after-sales service  |   |
| when wash tub doesn't rotate. | flash                 | quench | quench | quench | Close the stopcock, pull the plug and , entrust the after-sales service.  |   |
| Too much foam                 |                       |        |        |        | <ul style="list-style-type: none"> <li>● Check if add too much detergent?</li> </ul>  | Add reasonable amount of detergent.<br>Use the detergent correctly.   |

### Notes:

1. When faults occur, only Power and Start/Pause button are available; If Child lock was set, it is available also.

Power button: power-off

Start/Pause: first press stops alarming, second press continues the operation.

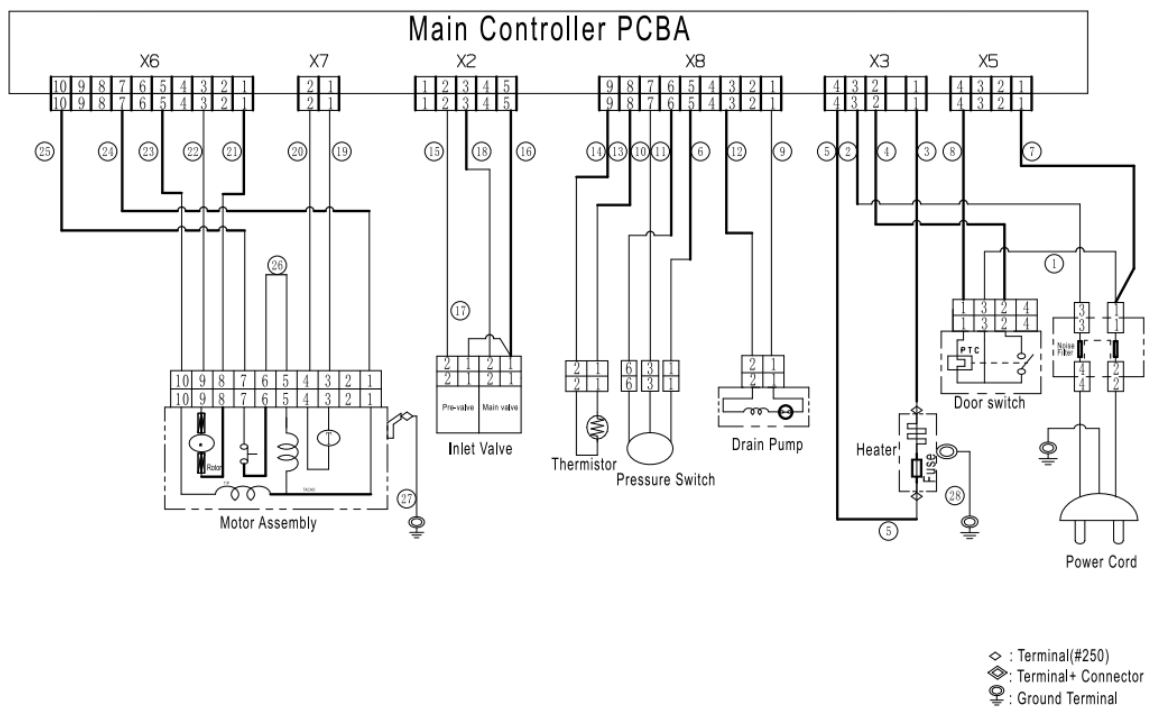
2. Dynamic balance NG alarms when the machine moves to spinning. When spinning from prewash or rinse program, if high speed spinning failed 28 times, please stop and move to next step.

3. Additional notes of door lock alarm: The lock alarming under unusual shut (with too strong or light power) is not quality problem. It needs reset by another push to effect closing. Suggest customer to close the door as the picture shows.



## 6 Common troubleshootings

### 6-1 Circuit diagram



## 6-2 Troubleshooting procedure

