

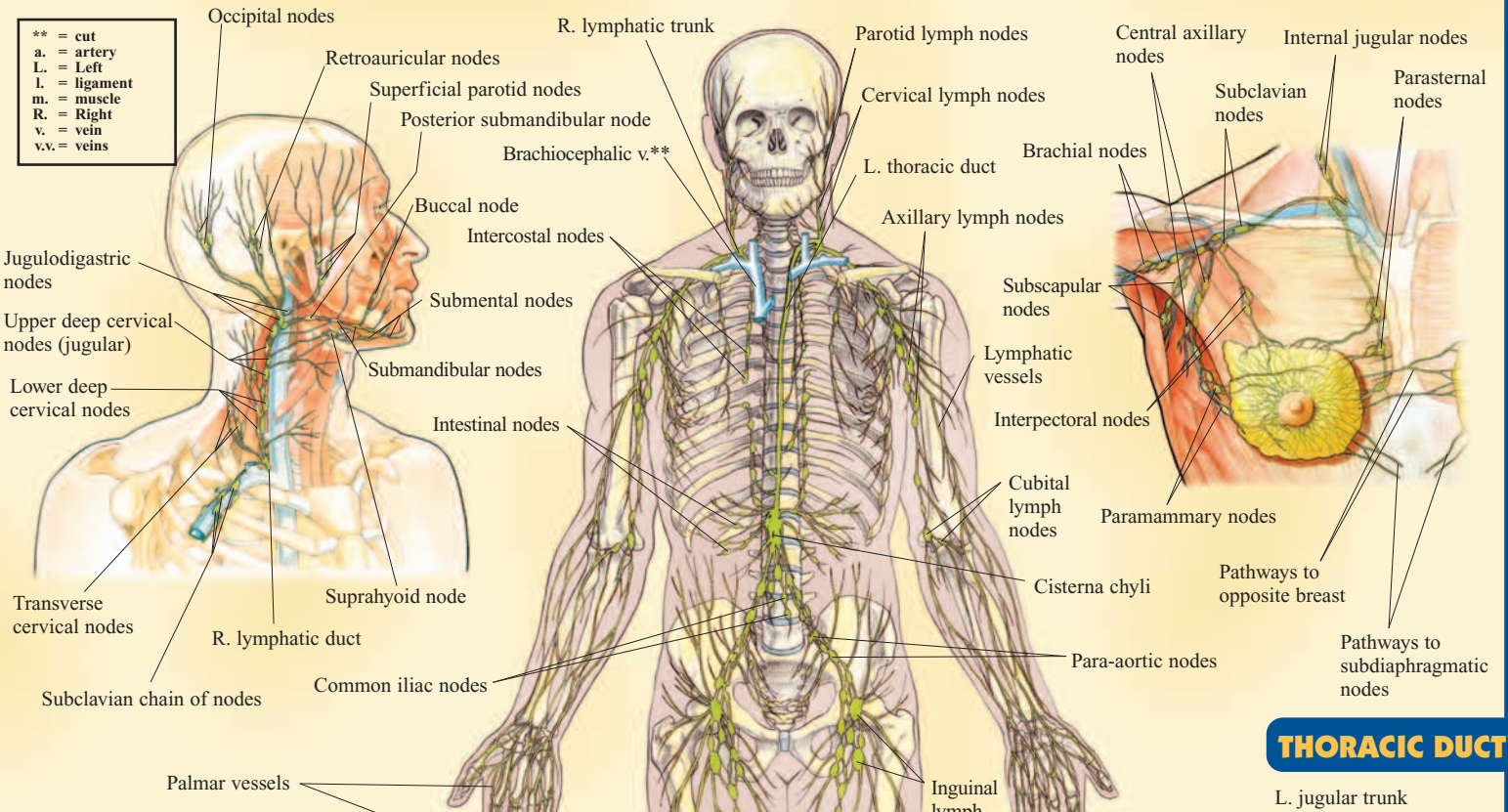
LYMPHATIC SYSTEM

HEAD & NECK

LYMPHATIC SYSTEM

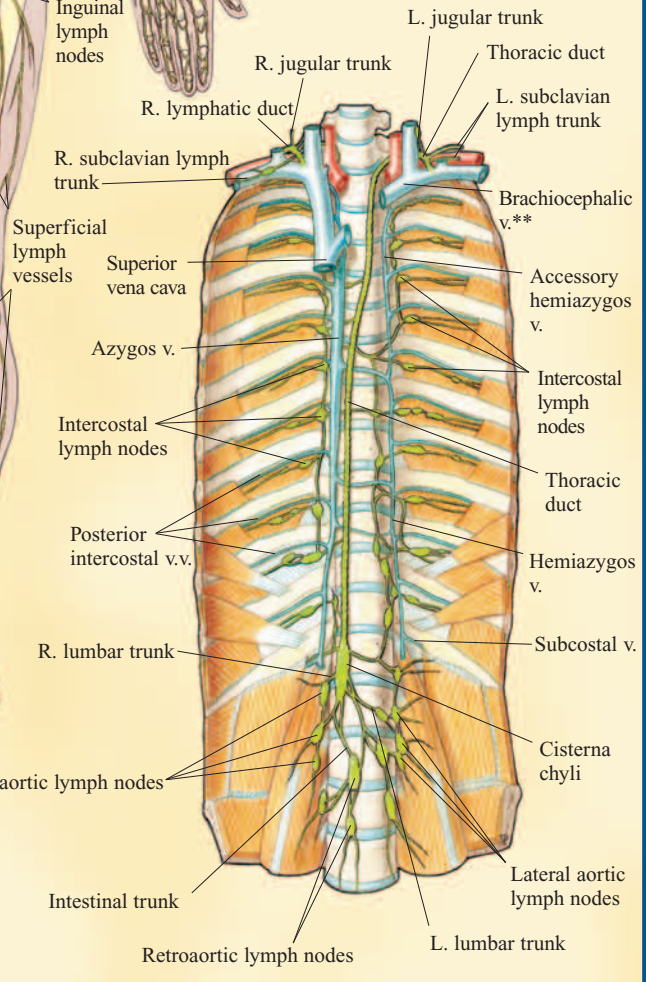
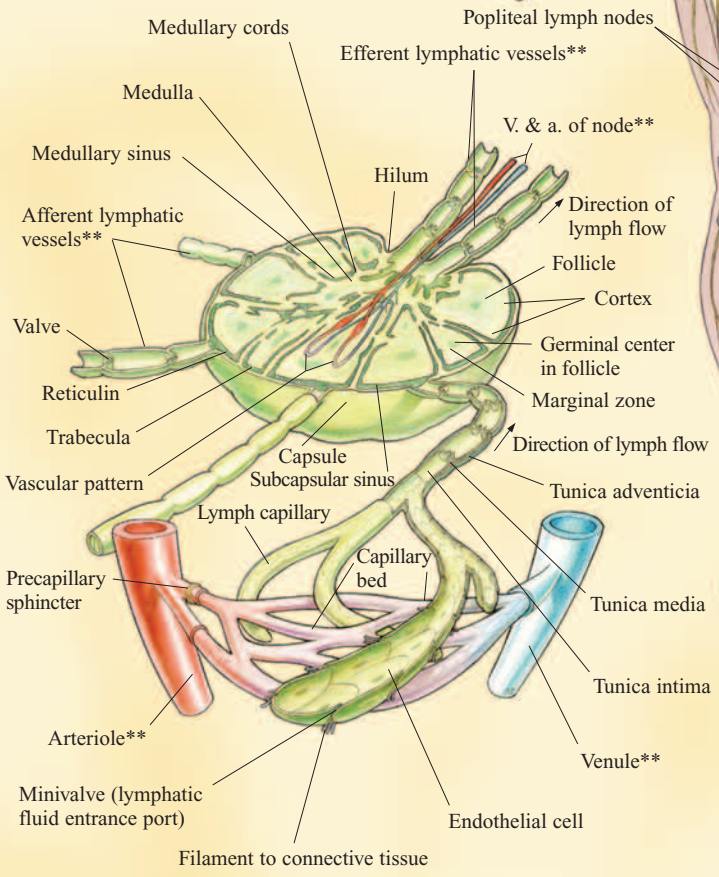
ARM AXILLA & THORAX

** = cut
 a. = artery
 L. = Left
 l. = ligament
 m. = muscle
 R. = Right
 v. = vein
 v.v. = veins



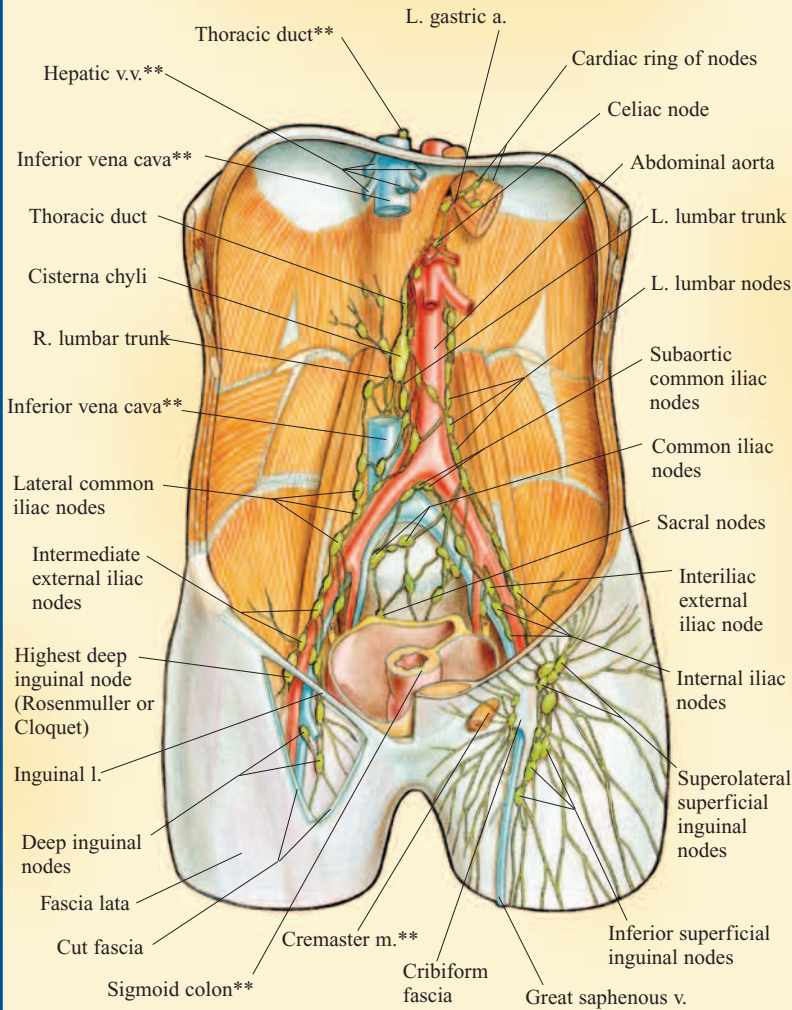
THORACIC DUCT

NODES & VESSELS

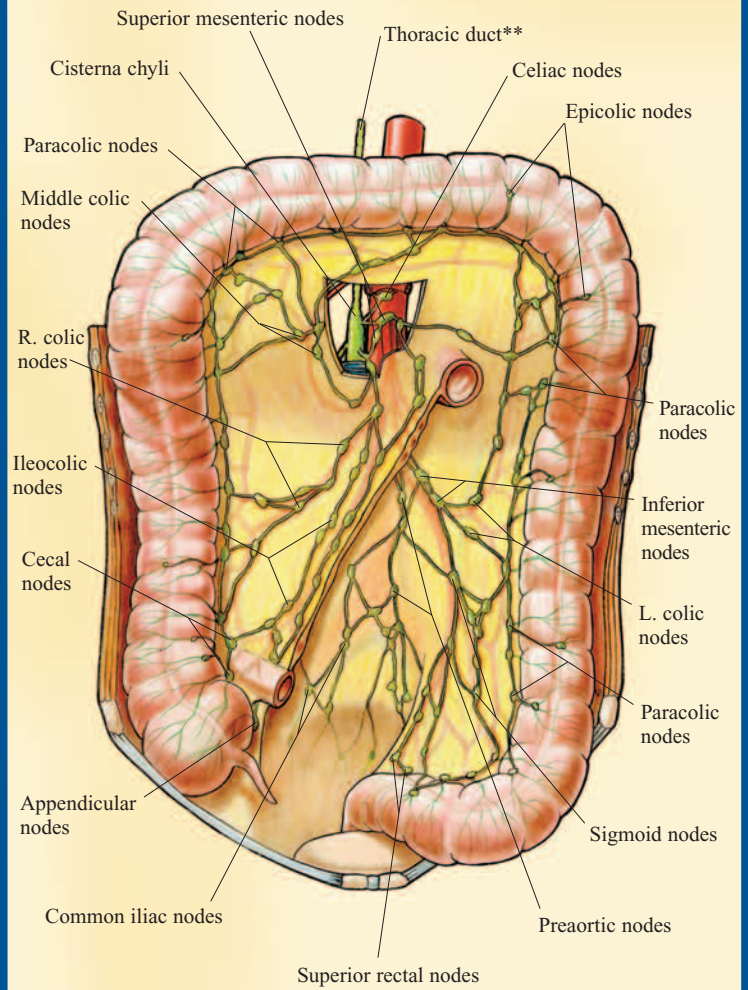


Plantar vessels

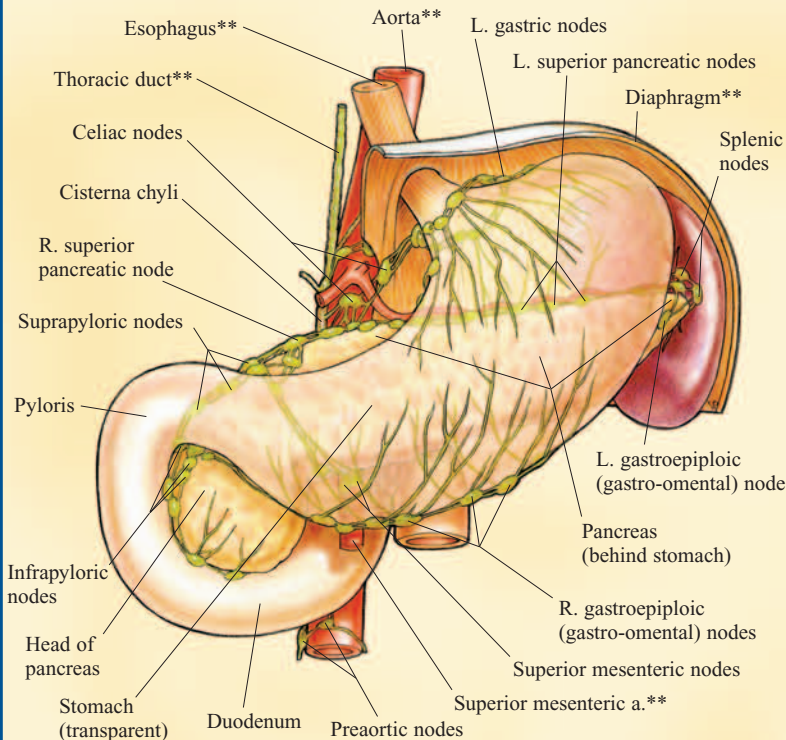
DEEP ABDOMINAL & INGUINAL NODES



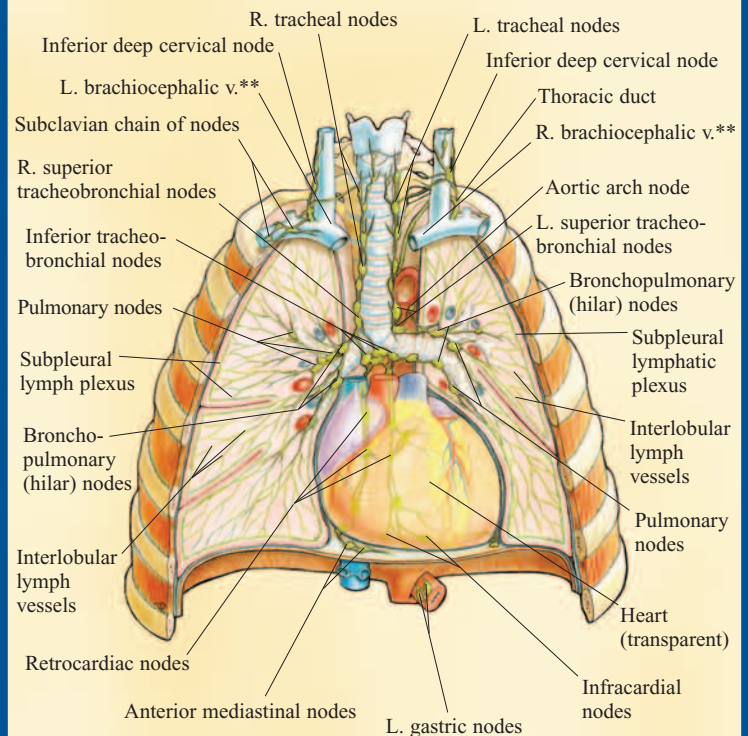
LARGE INTESTINE



STOMACH & PANCREAS



HEART & LUNGS



NOTE TO STUDENT

Use this comprehensive study guide in the classroom, in the gym, at home or anywhere you need complete anatomical information. This guide is not designed to take the place of classroom attendance. All rights reserved. No part of this publication may be reproduced or transmitted in any form, or by any means, electronic or mechanical, including photocopy, recording, or any information storage and retrieval system, without written permission from the publisher.

©2002, 2005 BarCharts Inc. 0807

ISBN-13: 978-142320734-4

ISBN-10: 142320734-3



5 0 3 9 5

9 781423 207344

CREDITS

Images © Vincent Perez
perezstudio.com
Layout: Dominic Thompson

Customer Hotline
1.800.230.9522

U.S.\$3.95
CAN.\$5.95

free downloads &
hundreds of titles at
quickstudy.com



6 54614 100734 6