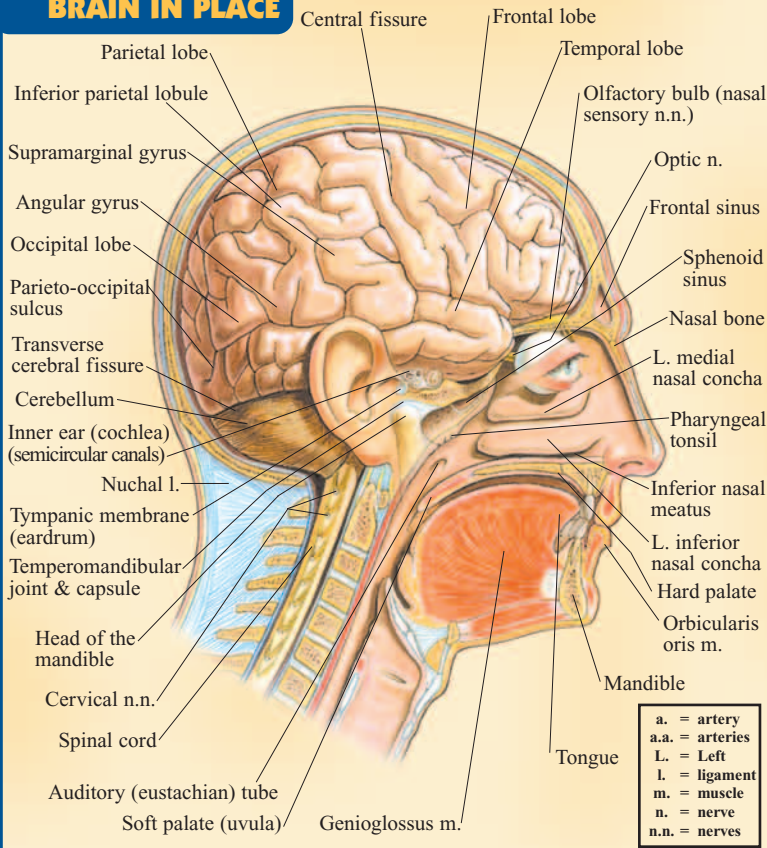


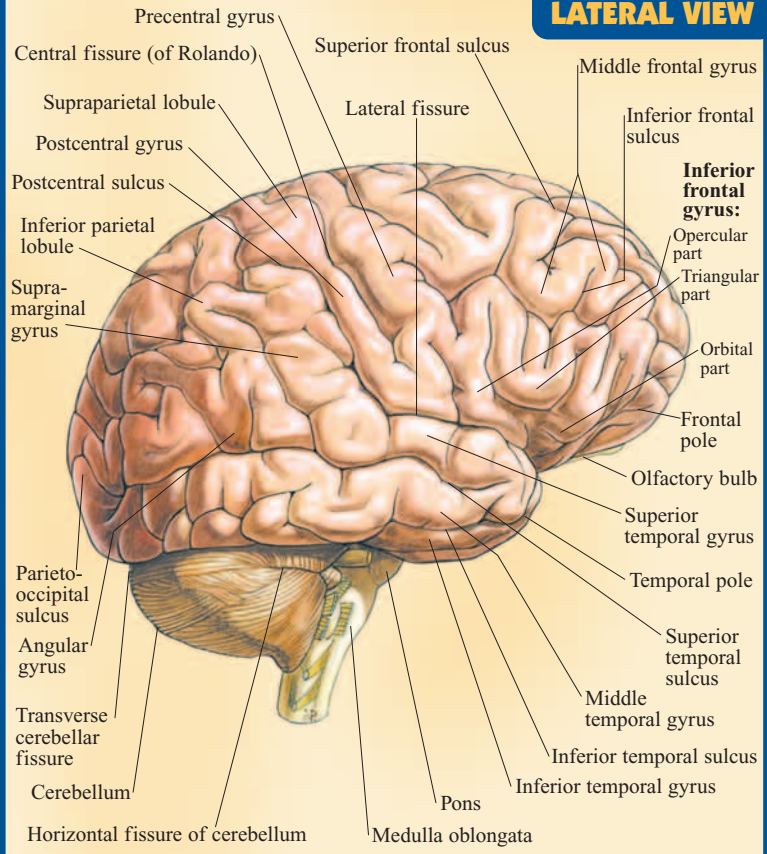
# THE BRAIN

## BRAIN IN PLACE



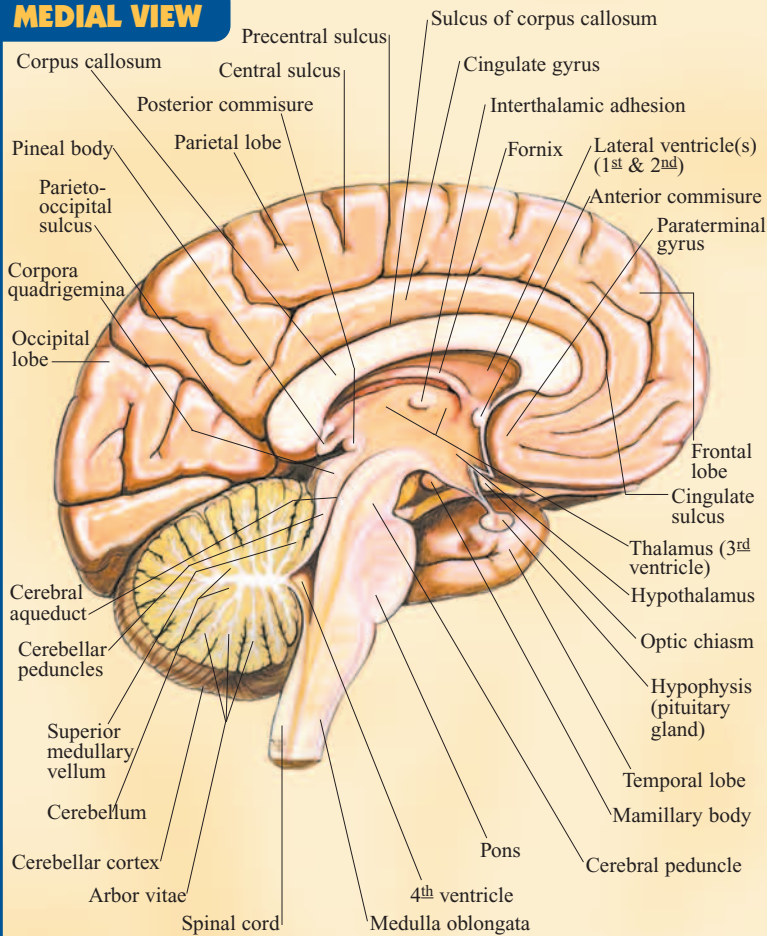
a. = artery  
a.a. = arteries  
L. = Left  
l. = ligament  
m. = muscle  
n. = nerve  
n.n. = nerves

## LATERAL VIEW

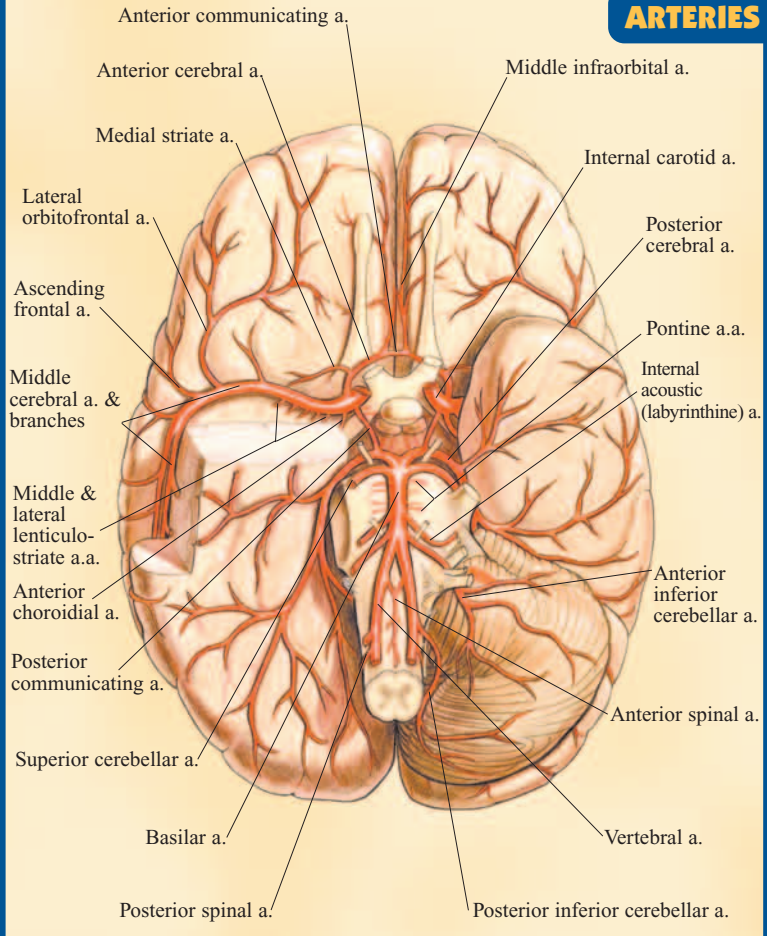


**Inferior frontal gyrus:**  
Opercular part  
Triangular part  
Orbital part

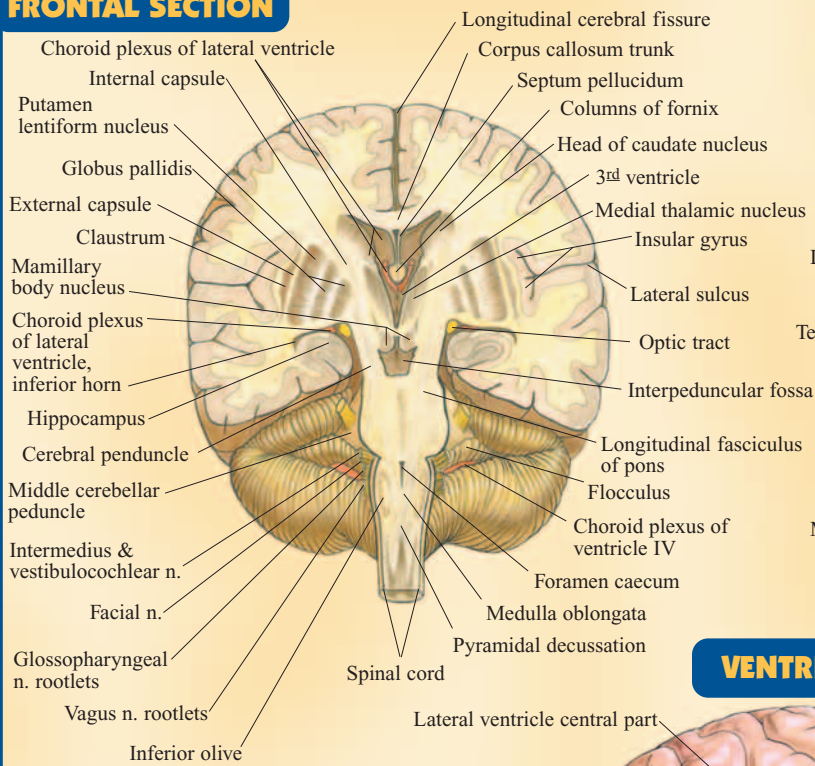
## MEDIAL VIEW



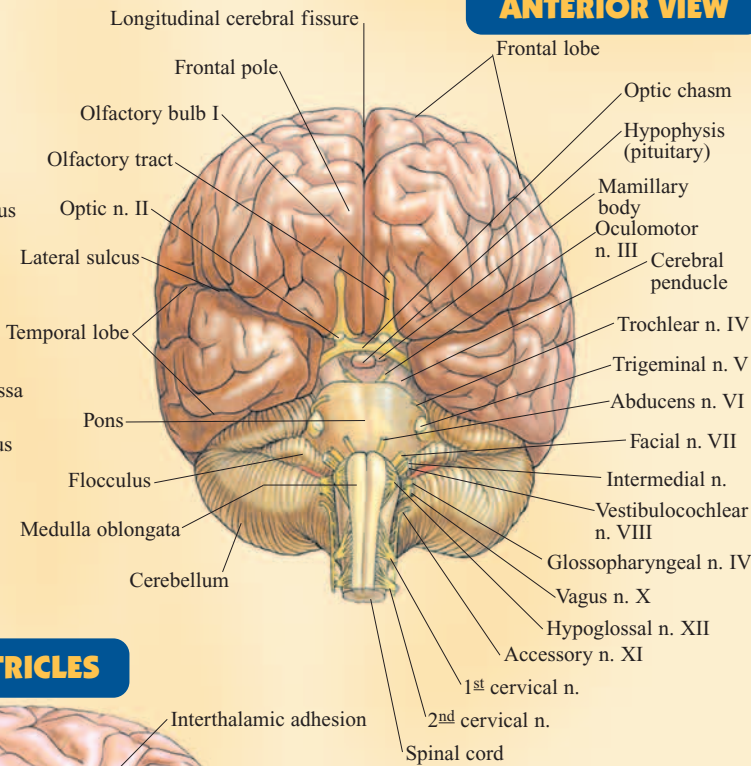
## ARTERIES



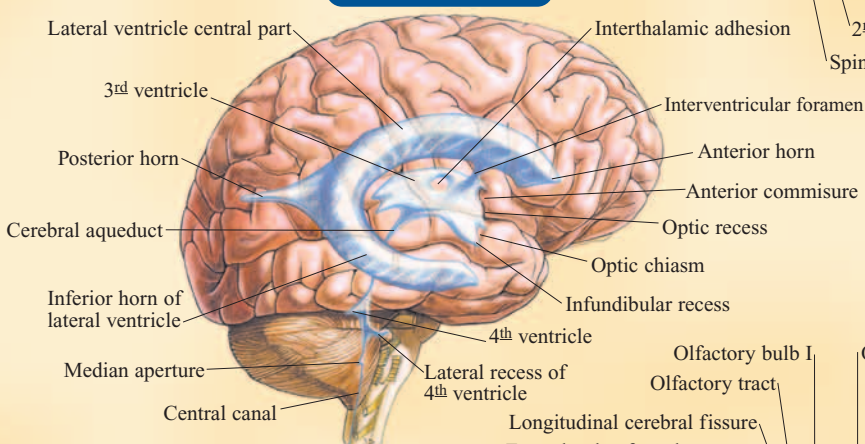
**FRONTAL SECTION**



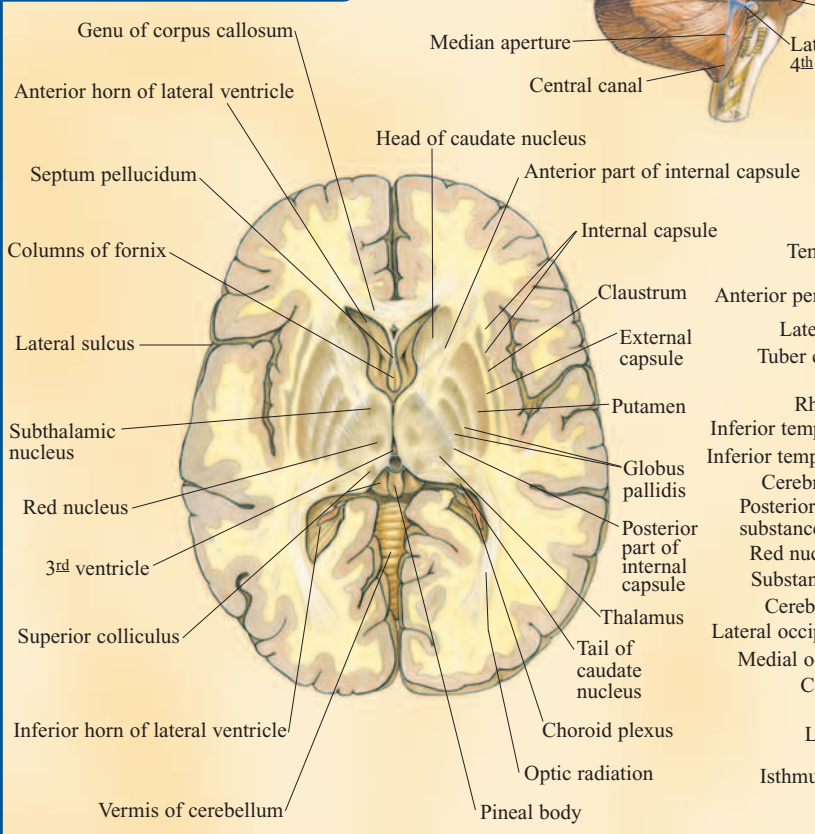
**ANTERIOR VIEW**



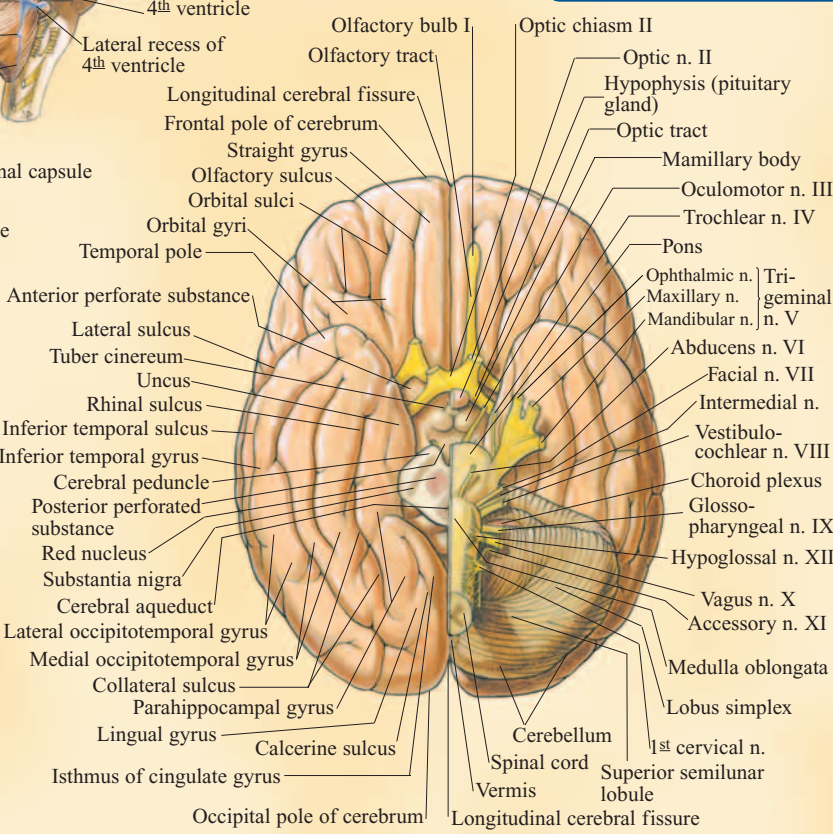
**VENTRICLES**



**HORIZONTAL SECTION**



**INFERIOR VIEW**



**NOTE TO STUDENT**

Use this comprehensive QuickStudy® guide in the classroom, at home or anywhere you need complete information about the brain. This guide is not designed to take the place of classroom attendance.

All rights reserved. No part of this publication may be reproduced or transmitted in any form, or by any means, electronic or mechanical, including photocopying, recording, or any information storage and retrieval system, without written permission from the publisher. ©2001, 2003 BarCharts Inc. 0608

ISBN-13: 978-142320717-7  
ISBN-10: 142320717-3



**CREDITS**

Images © Vincent Perez/perezstudio.com  
Layout: Dale Nibbe

Customer Hotline # 1.800.230.9522

free downloads & hundreds of titles at [quickstudy.com](http://quickstudy.com)

U.S. \$3.95 / CAN. \$5.95

