



ANATOMY

THE MOST COMPREHENSIVE ALL-IN-ONE ANATOMY CHART

SKELETAL SYSTEM

Anterior View Labels: Maxilla, Temporal, Frontal, Zygomatic, Mandible, Cervical vertebrae, Coracoid process, Scapula, Acromion, Lesser tubercle, Greater tubercle, Bicipital groove, Sternum, Ribs, Xiphoid process, Trochlea, Capitulum, Iliac crest, Ilium, Acetabulum (socket), Sacrum, Neck, Head, Pubis, Ischium, Pubic symphysis, Femur, Patella, Tibia, Fibula, Medial malleolus, Lateral malleolus, Cuneiforms (I, II, III), Metatarsals, Phalanges, Navicular, Cuboid, Talus, Sacrum (5 fused), Coccyx (3-5), Metatarsals, Phalanges, Metatarsals.

Lateral View Labels: Parietal, Occipital, Cervical vertebrae (I-VII), Scapula, Humerus, Olecranon, Ulna, Radius, Carpal, Metacarpals, Phalanges, Femur, Patella, Tibia, Fibula, Talus, Navicular, Calcaneus, Cuboid, Metatarsals, Phalanges, Metatarsals.

Posterior View Labels: Parietal, Occipital, Cervical vertebrae (I-VII), Clavicle, Scapula, Humerus, Spine of scapula, Thoracic vertebrae (I-XII), Lumbar vertebrae (I-V), Sacroiliac joint, Sacrum (5 fused), Coccyx (3-5), Obturator foramen, Ischium, Femur, Metacarpals, Lateral condyle, Medial condyle, Tibia, Fibula, Calcaneus, Metatarsals, Phalanges.

Legend:
 ** = cut
 a. = artery
 a.a. = arteries
 ex. = extensor
 fl. = flexor
 L. = Left
 (L.i.) = large intestine
 l. = ligament
 l.l. = ligaments
 m. = muscle
 m.m. = muscles
 n. = nerve
 n.n. = nerves
 R. = Right
 (s.i.) = small intestine
 v. = vein
 v.v. = veins

CARPALS
 1. Scaphoid 5. Trapezium
 2. Lunate 6. Trapezoid
 3. Triquetral 7. Capitate
 4. Pisiform 8. Hamate
 (behind hamate)

ANTERIOR VIEW

LATERAL VIEW

POSTERIOR VIEW

VERTEBRAL COLUMN

Labels: Cervical vertebrae (I-VII), Atlas vertebrae, Axis vertebrae, Thoracic vertebrae (I-XII), Transverse costal facet, Costal facet, Transverse process, Superior and inferior articulating processes, Spinous processes, Intervertebral foramen, Lumbar vertebrae (I-V), Pedicle, Body, Disc, Sacrum (I-V fused), Promontory, Auricular surface (for ilium), Coccyx (3-5 Var.) (coccygeal vertebrae).

Labels: Lateral epicondyle, Patellar groove, Outer layer, Inner layer, Periosteum, Interstitial lamellae, Concentric lamellae, Blood vessels within Volkman's or perforating canal, Osteon (haversian system), Lacunae containing osteocytes, Canaliculi, Endosteum, Nutrient foramen, Vein, Nutrient a., Yellow marrow, Femur, Medullary cavity, Periosteum (covers all nonarticulating surfaces), Compact bone, Diaphysis, Trabeculae, Head of femur, Neck of femur, Cancellous bone, Proximal secondary epiphysis, Great trochanter, Epiphyseal lines, Fovea capitis, Proximal epiphysis.

BONE STRUCTURE

Lateral View Labels: Lambdoid suture, Parietal, Frontal, Temporal, Occipital, Mastoid process, Acoustic (or external auditory) meatus, Styloid process, Zygomatic arch.

Anterior View Labels: Supraorbital foramen, Parietal, Frontal, Wing of sphenoid, Lacrimal, Ethmoid, Temporal, Nasal, Nasal conchae, Zygomatic, Infraorbital foramen, Mastoid process, Vomer, Maxilla, Mandible, Mental foramen.

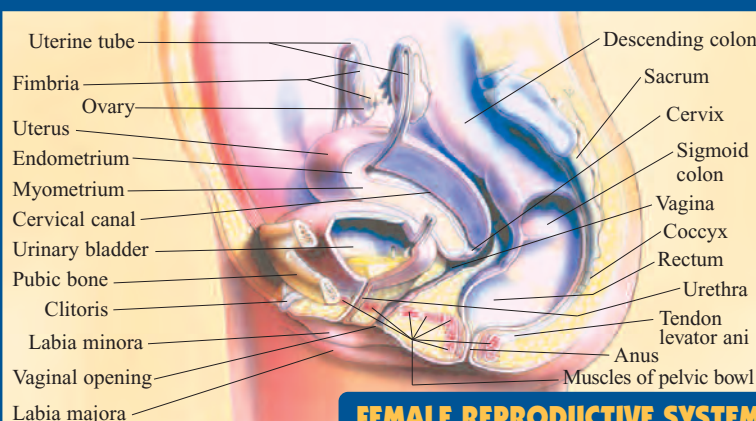
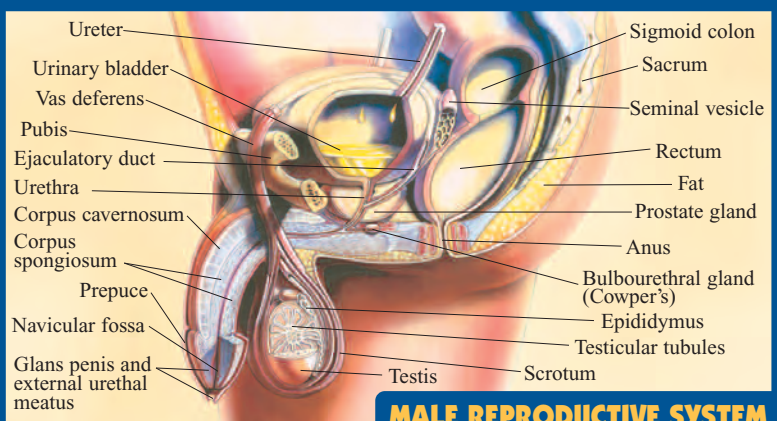
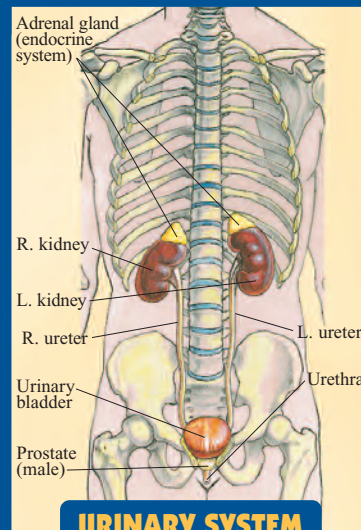
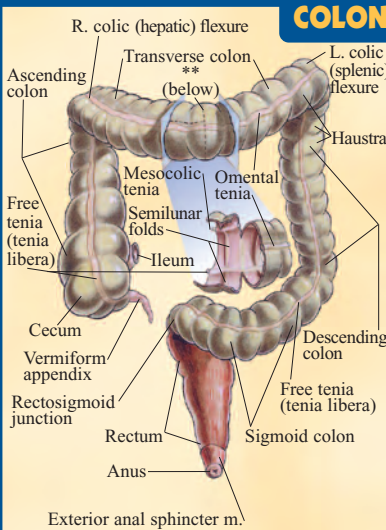
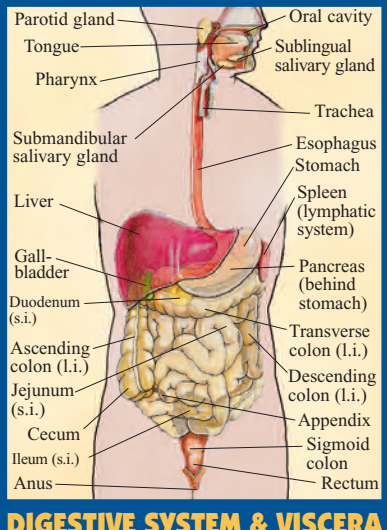
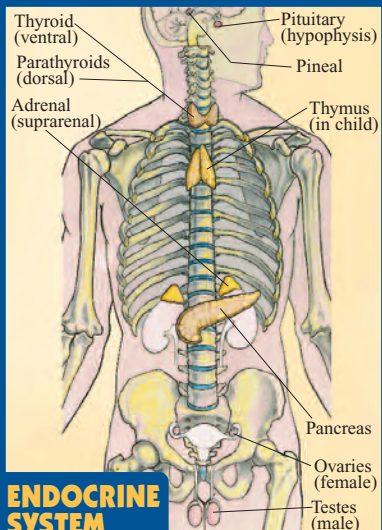
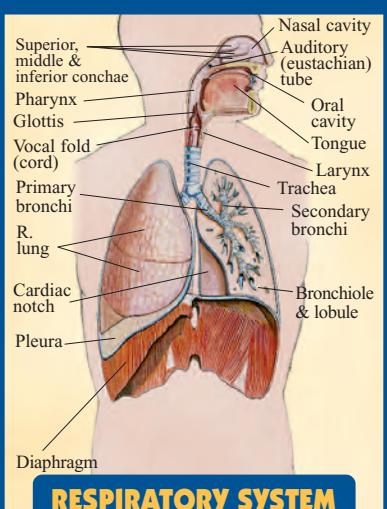
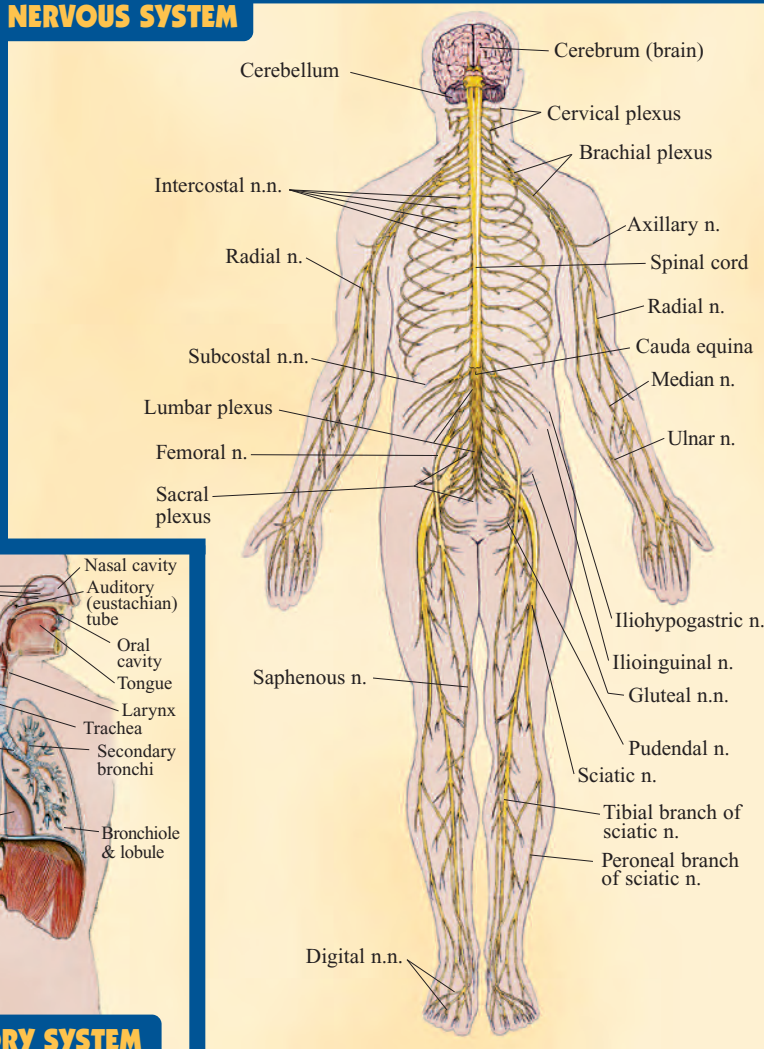
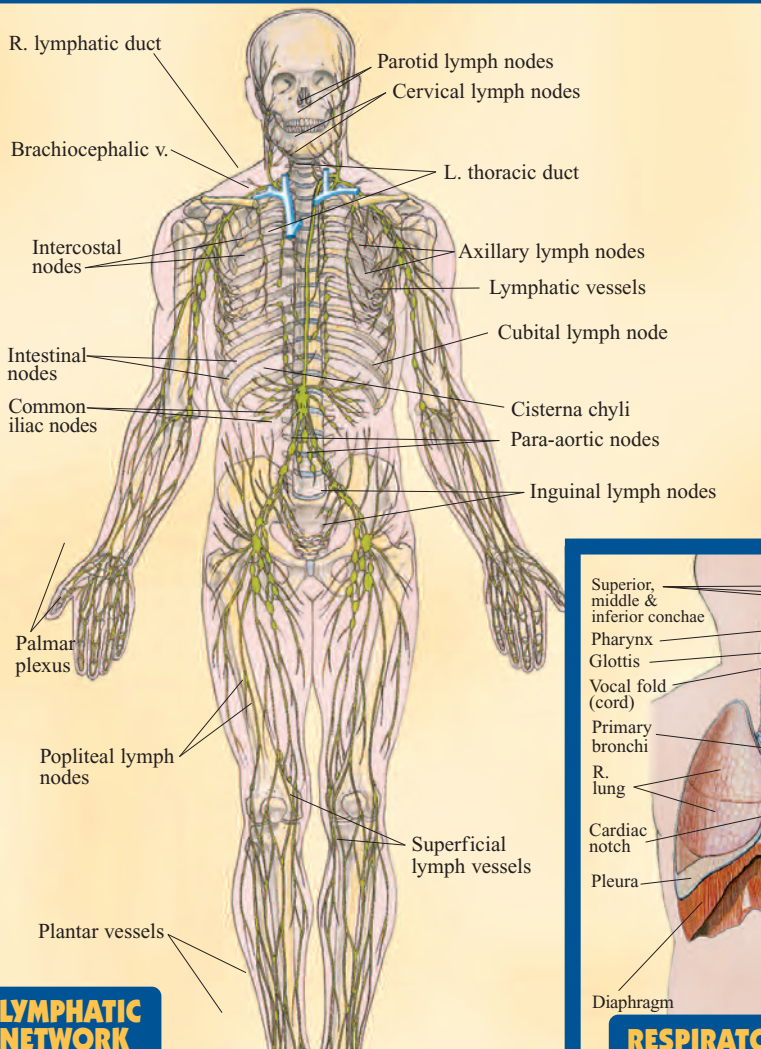
SKULL

Vertebra Labels: Dorsal root (sensory), Ventral root (motor), Spinous process, Sensory ganglion, Superior articular process, Pedicle, Transverse process, Gray and white rami communicans, Inferior articular process and facet, Sympathetic trunk, Intervertebral disc.

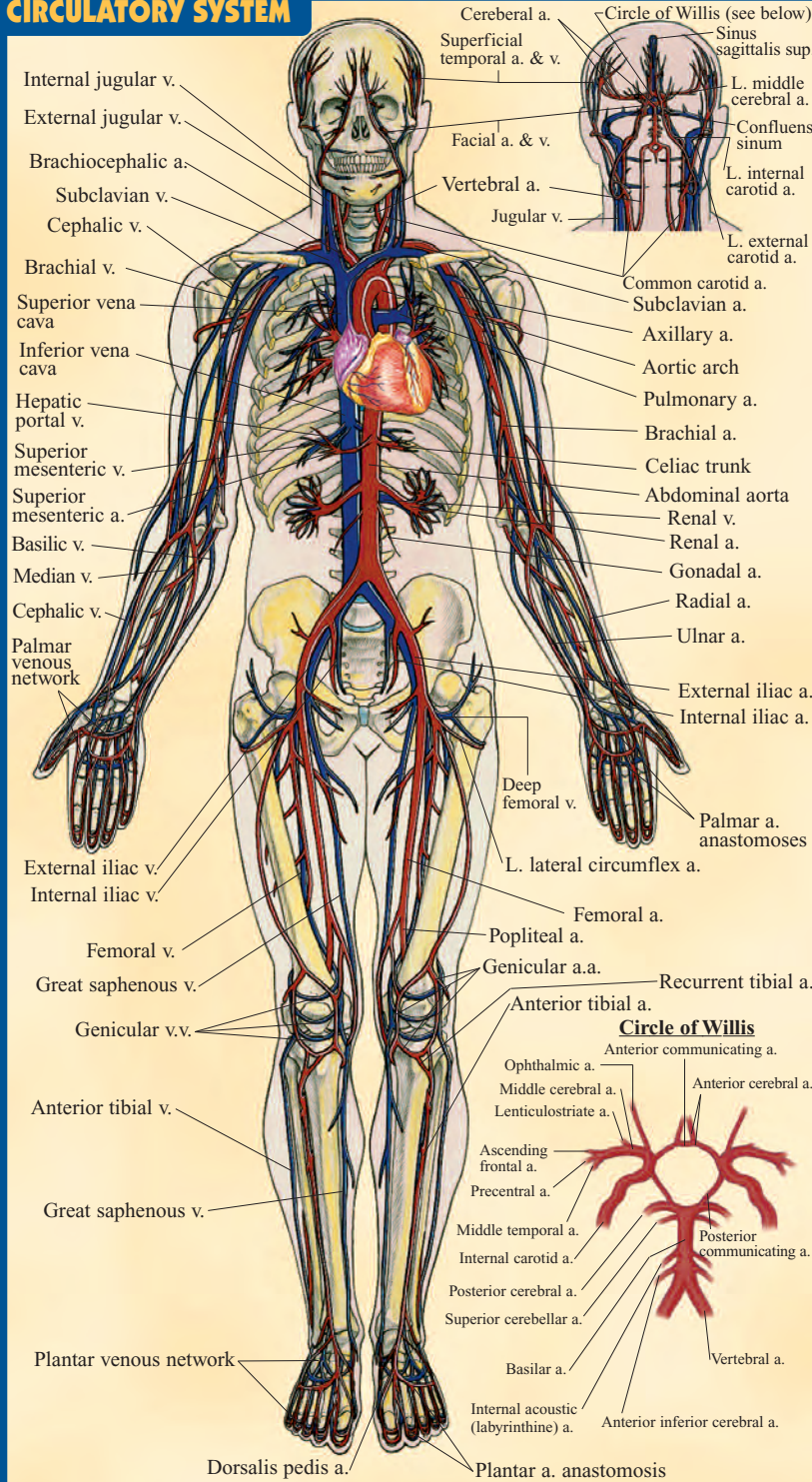
Spinal Nerve Root Labels: White matter (sensory), Synapse, Gray matter, White matter (motor), Pia mater, Motor n. fibers, Arachnoid matter, Nerve fibers, Dura mater, Vertebral body (centrum), Sympathetic ganglion, Spinous process, Lamina, Superior articular facet, Superior articular process, Mamillary process, Accessory process, Transverse process, Pedicle, Superior vertebral notch, Vertebral foramen, Body.

VERTEBRAE & NERVE STRUCTURE

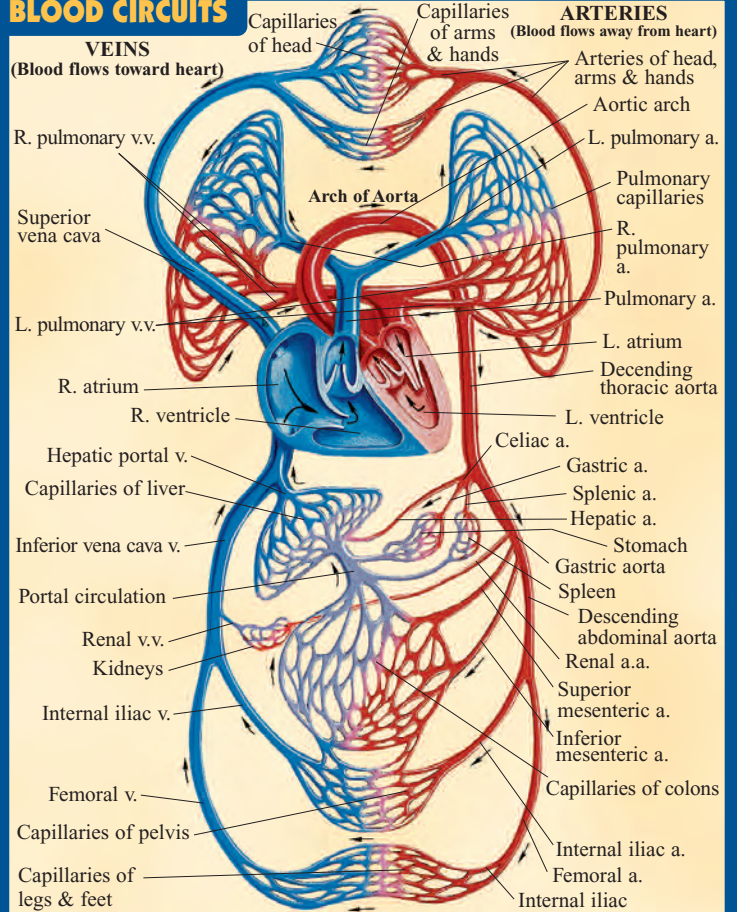
NERVOUS SYSTEM



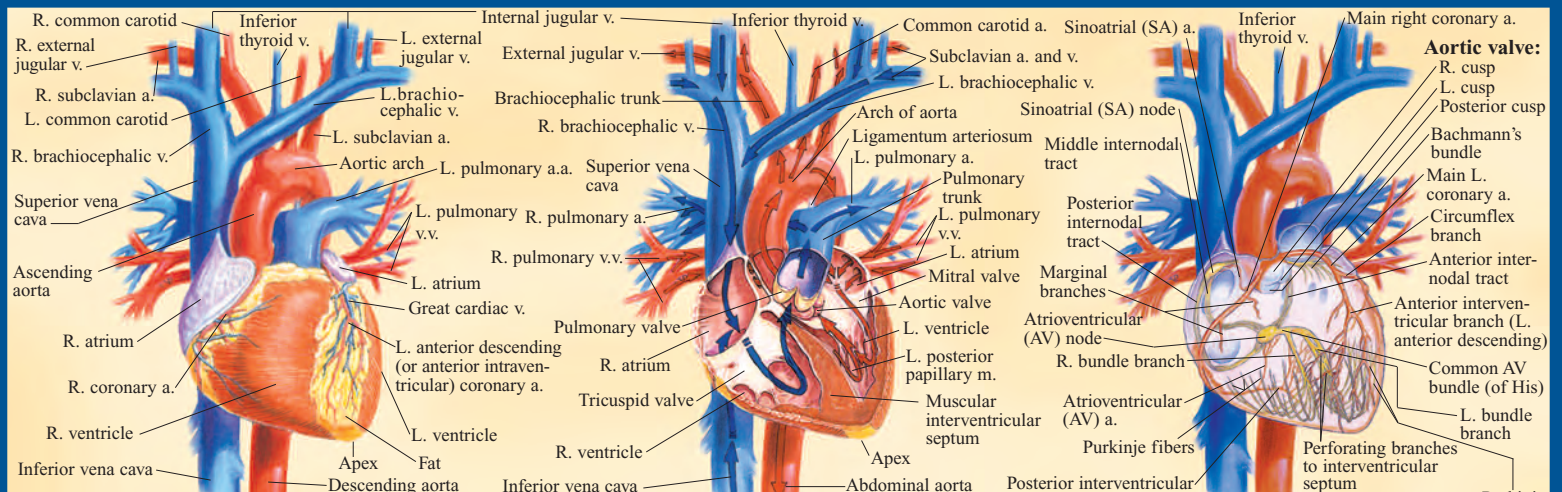
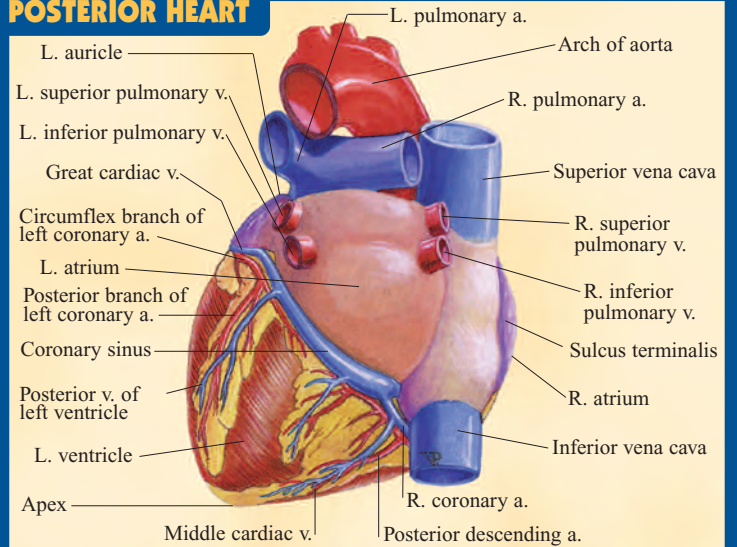
CIRCULATORY SYSTEM



BLOOD CIRCUITS



POSTERIOR HEART



ANTERIOR HEART

CIRCULATION

NERVES & ARTERIES

MUSCLES

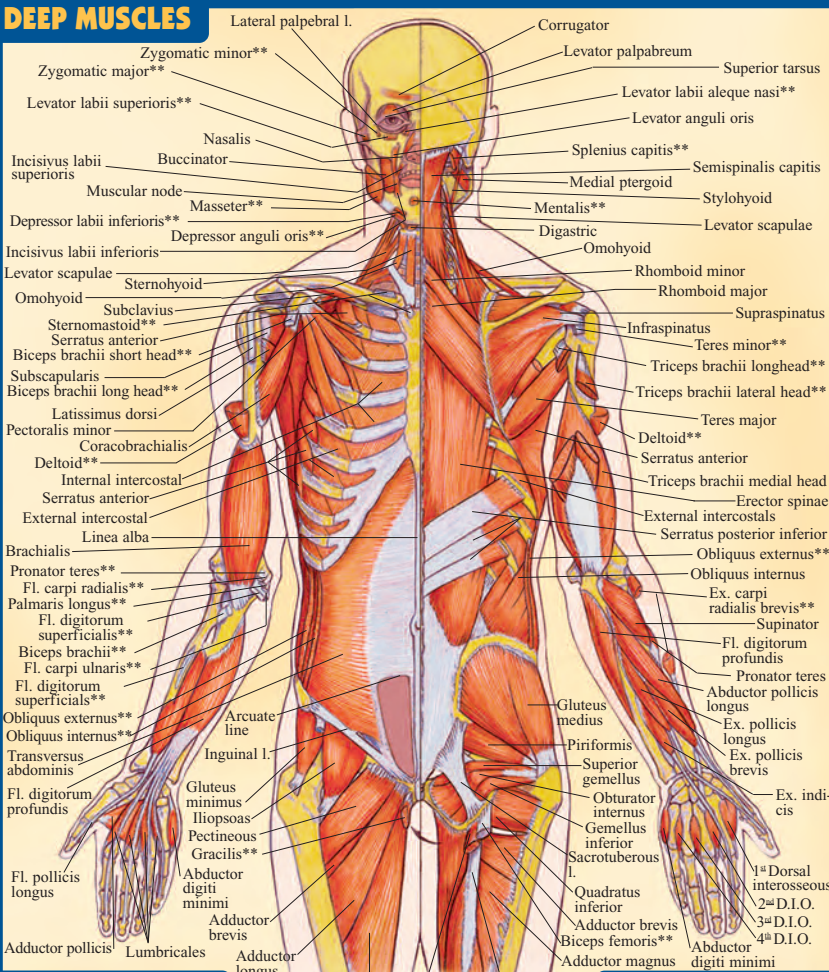


ANTERIOR VIEW

LATERAL VIEW

POSTERIOR VIEW

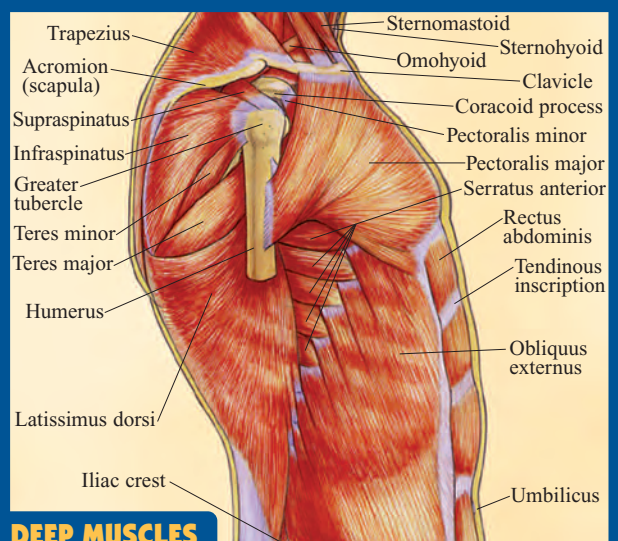
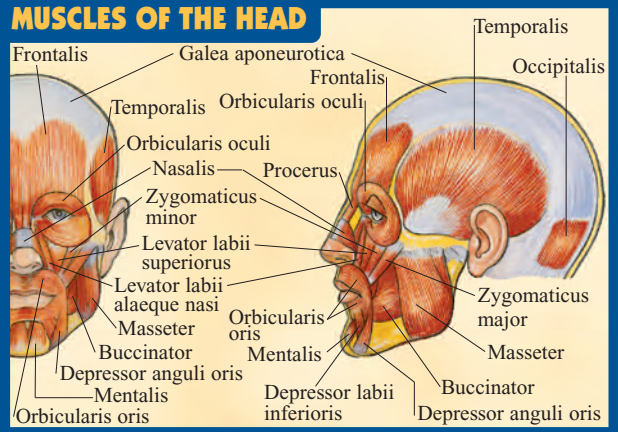
DEEP MUSCLES



ANTERIOR VIEW

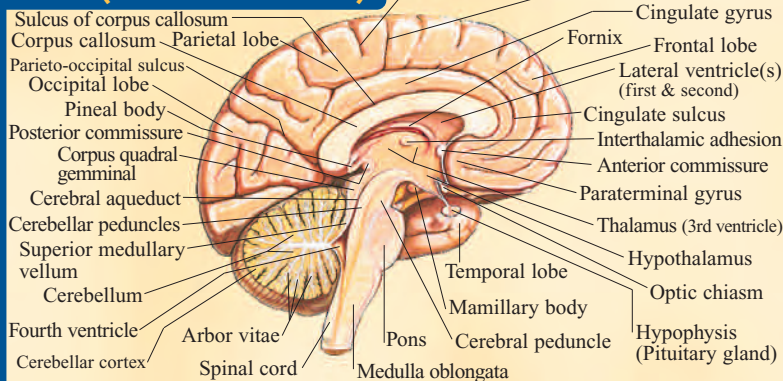
POSTERIOR VIEW

MUSCLES OF THE HEAD

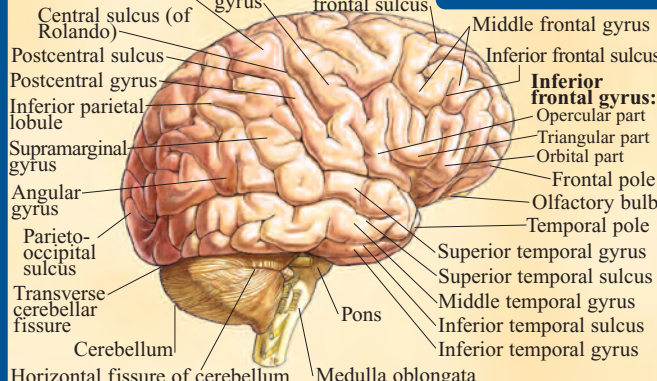


DEEP MUSCLES LATERAL VIEW

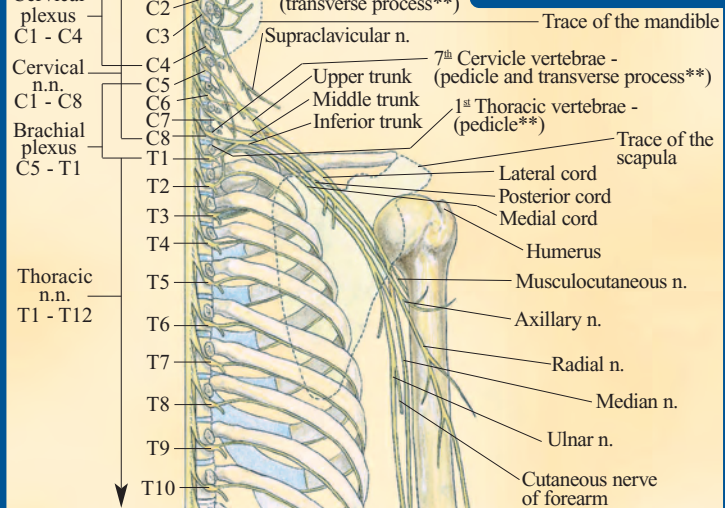
BRAIN (SAGITTAL SECTION)



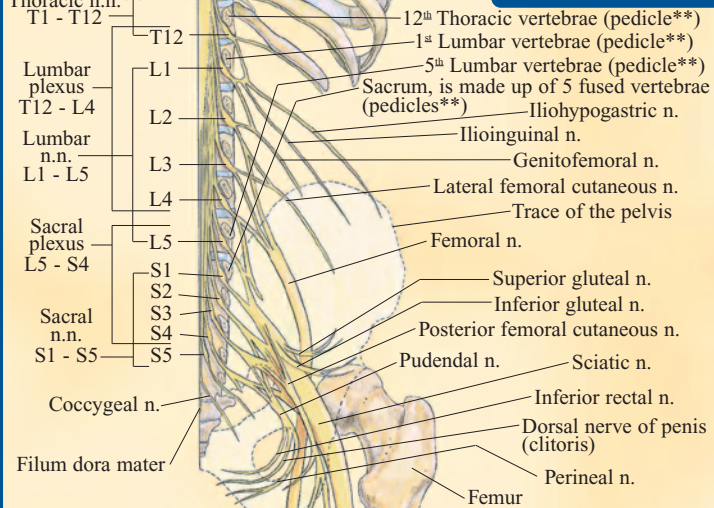
SURFACE BRAIN



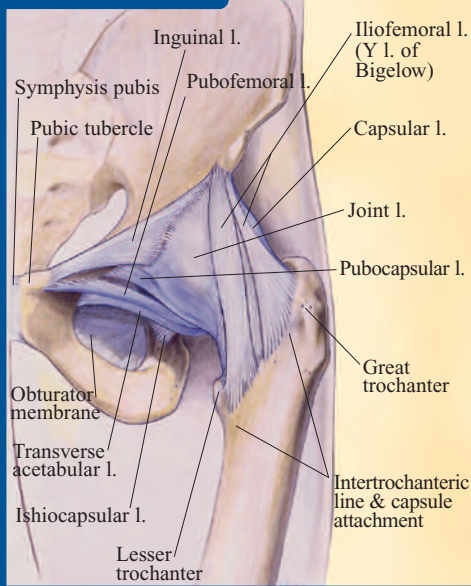
BRACHIAL PLEXUS



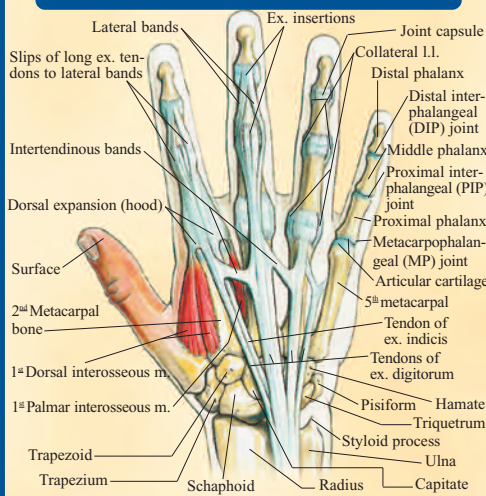
SACRAL PLEXUS



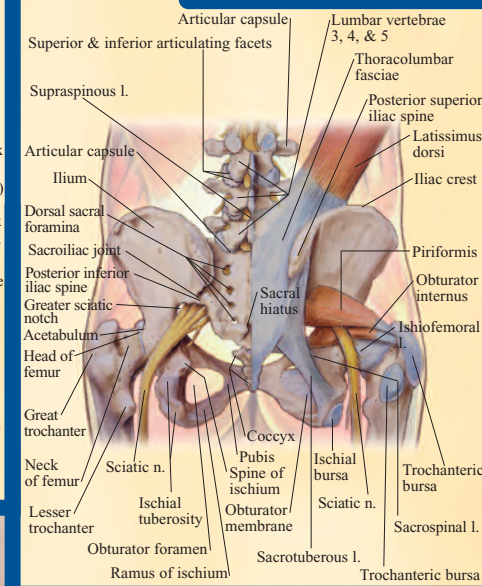
HIP LIGAMENTS



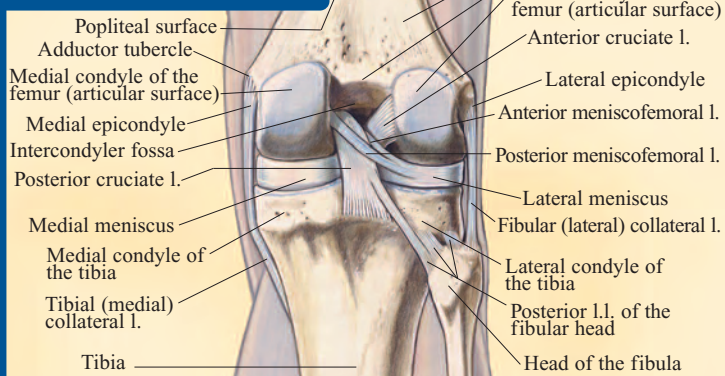
COMPONENTS OF THE FINGER



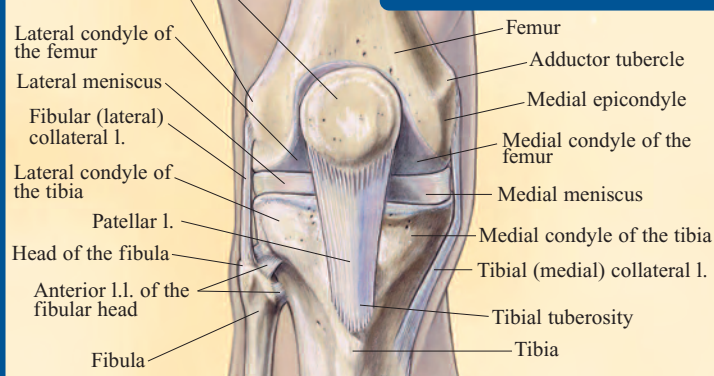
HIP & SCIATIC NERVE



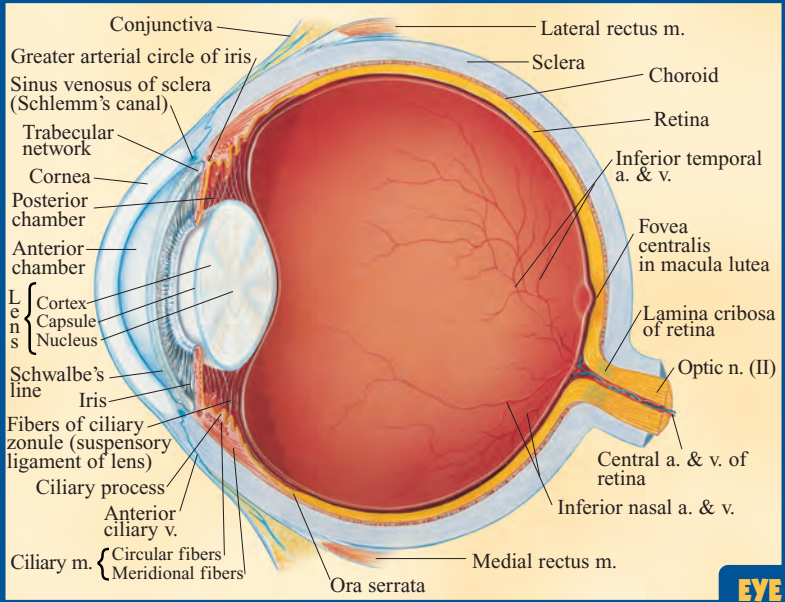
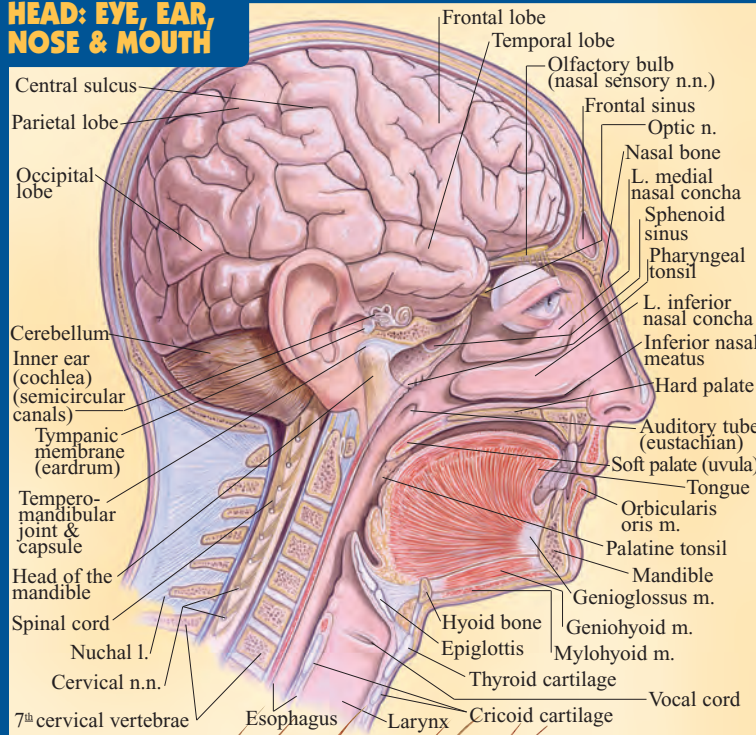
KNEE LIGAMENTS BACK



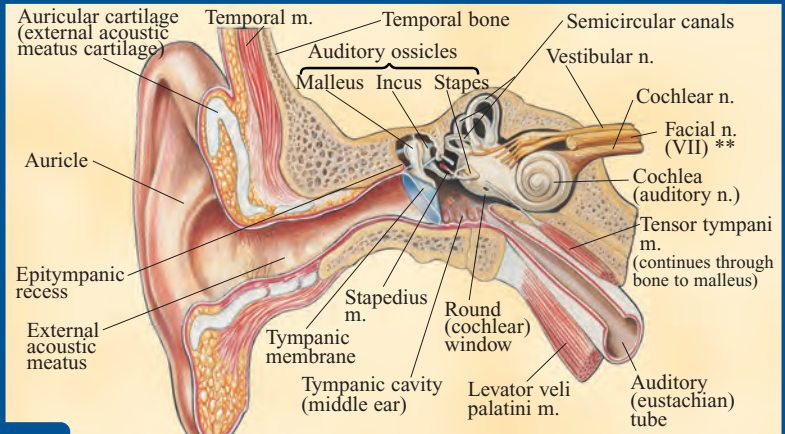
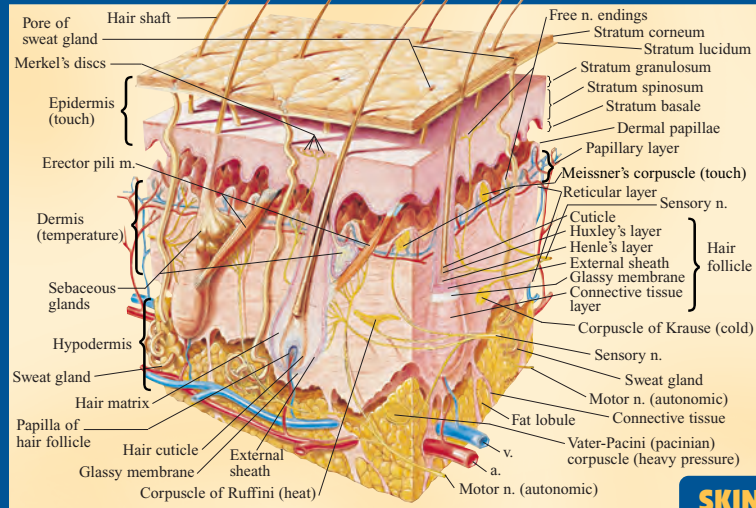
KNEE LIGAMENTS FRONT



HEAD: EYE, EAR, NOSE & MOUTH

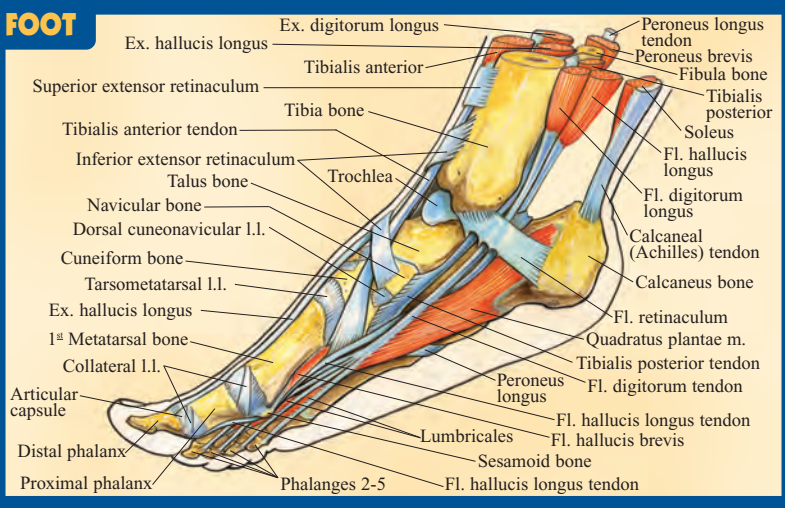
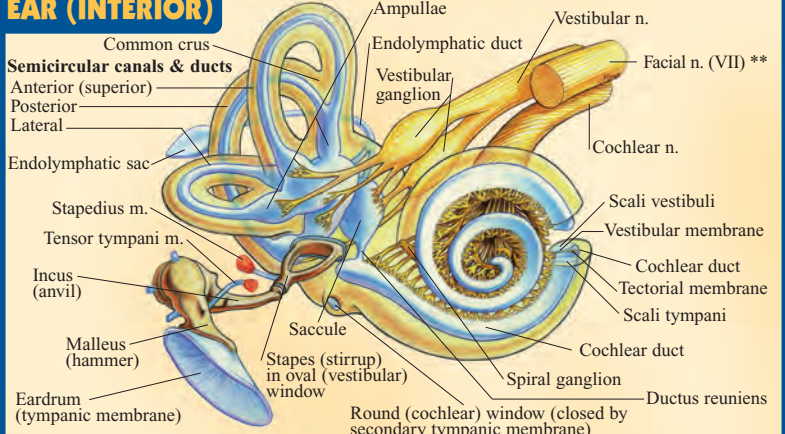
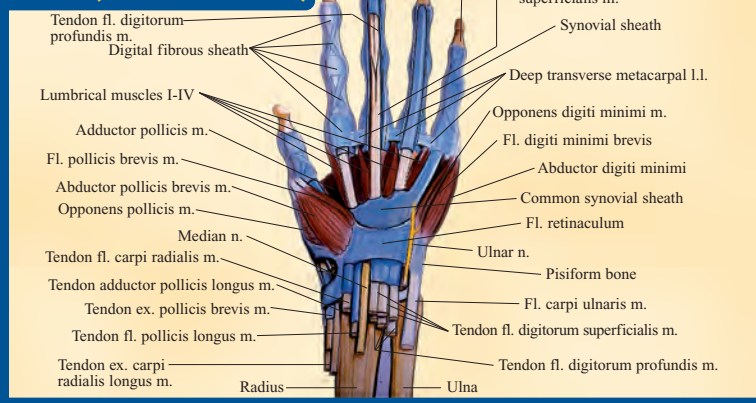


EYE



EAR (INTERIOR)

ANATOMY OF THE HAND (PALMAR SURFACE)



FOOT

NOTE TO STUDENT: This *QuickStudy* reference guide is the single most comprehensive "ANATOMY" guide ever published. It is a powerful study tool that can be quickly and repeatedly referred to during and well beyond your college years. All rights reserved. No part of this publication may be reproduced or transmitted in any form, or by any means, electronic or mechanical, including photocopy, recording, or any information storage and retrieval system, without written permission from the publisher. © 2001, 2003, 2005 **BARCharts** Inc. 1106

Images © Vincent Perez/perezstudio.com
 Layout: Rich Marino
 U.S.\$5.95 / CAN.\$8.95

Customer Hotline: 1.800.230.9522
 hundreds of titles at
quickstudy.com



6 54614 00203 7



ISBN-13: 978-142320203-5
 ISBN-10: 142320203-1
 50595