

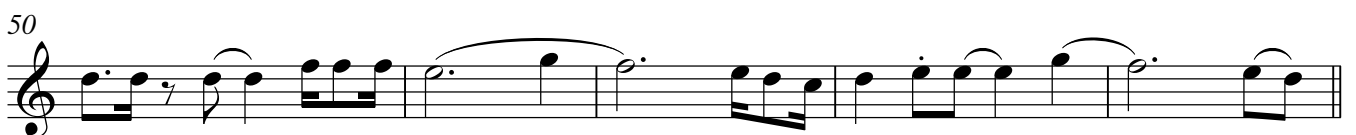
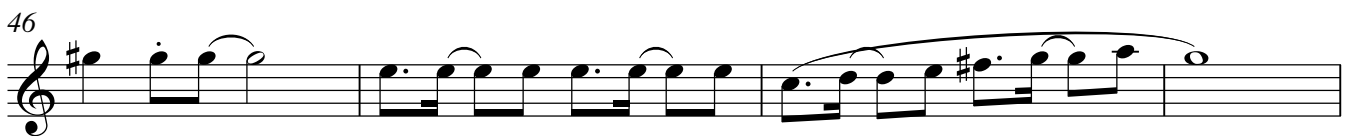
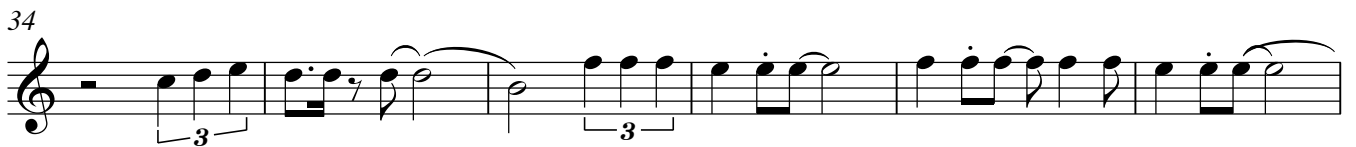
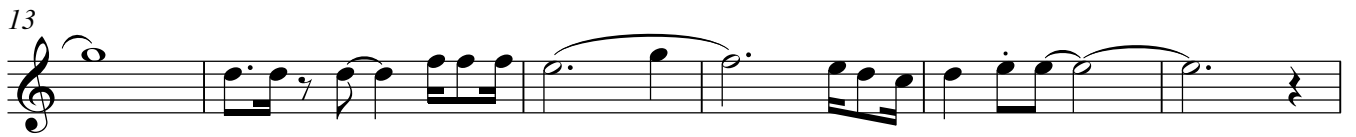
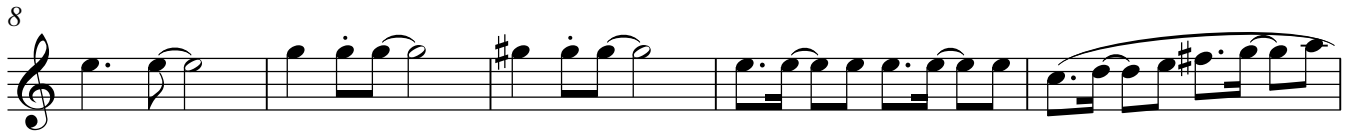
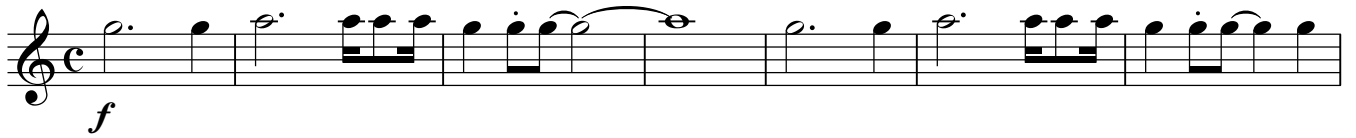
ABBA GOLD

Tenor II

"Dancing Queen"

♩ = 100

Transcrição Sgt Paulo



"Mamma Mia" ♩ = 136

Tenor II

55

3

f

62

67

72

77

f

82

7

f

95

♩ = 96

f

"Fernando"

100

p

105

109

112

2/4

Tenor II tutti

115

f

119

123

128

132

137

142

"The Winner takes it all" ♩ = 120 *rall.*

148

154

160

166