

ChessTrainer

100 mates in 3

vol.1



Prologue

Chess is 99% tactics.

Teichmann

www.chesstrainer.org

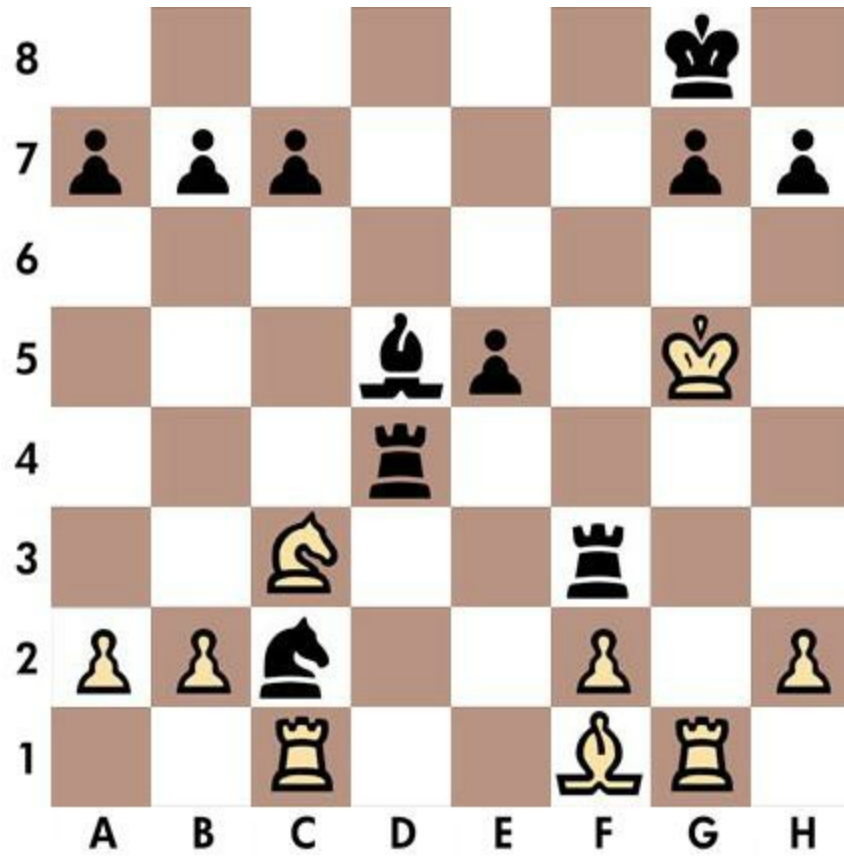
Chapter 1

Quizzes 1-10

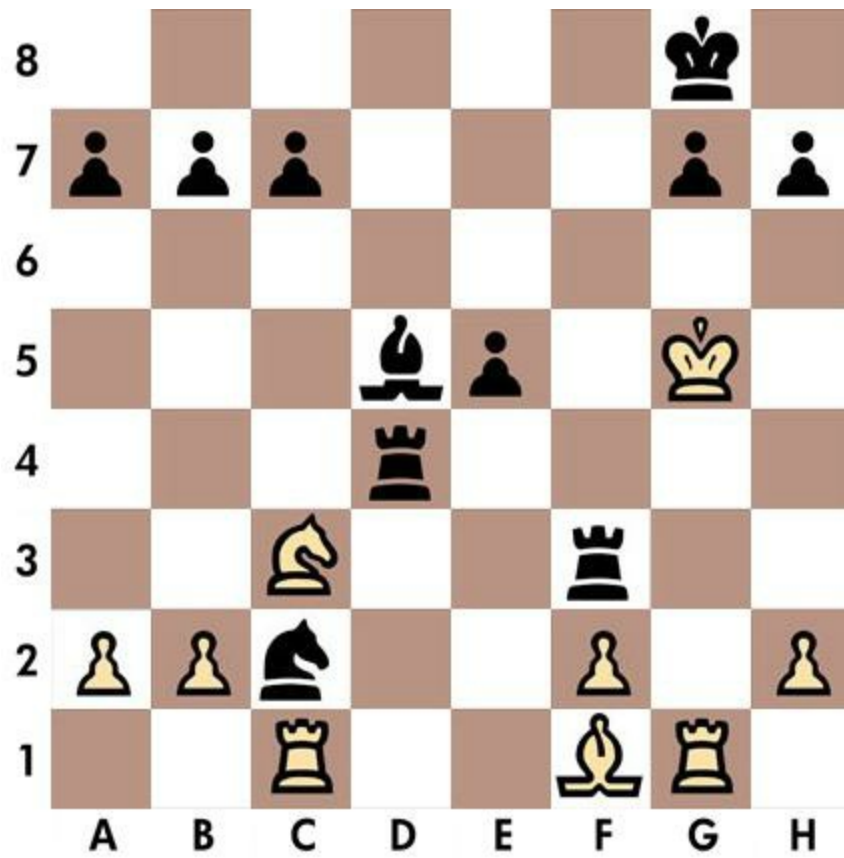
It is a mistake to think that combination is solely a matter of talent, and that it cannot be acquired.

Reti

Quiz n.1 - Black to move

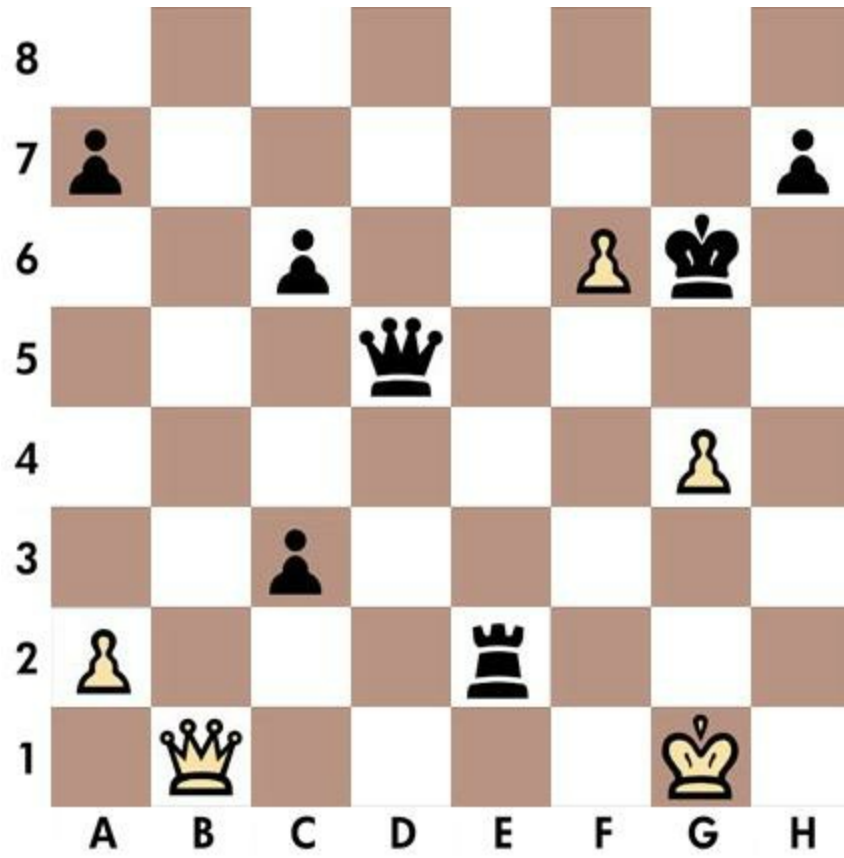


Solution n.1

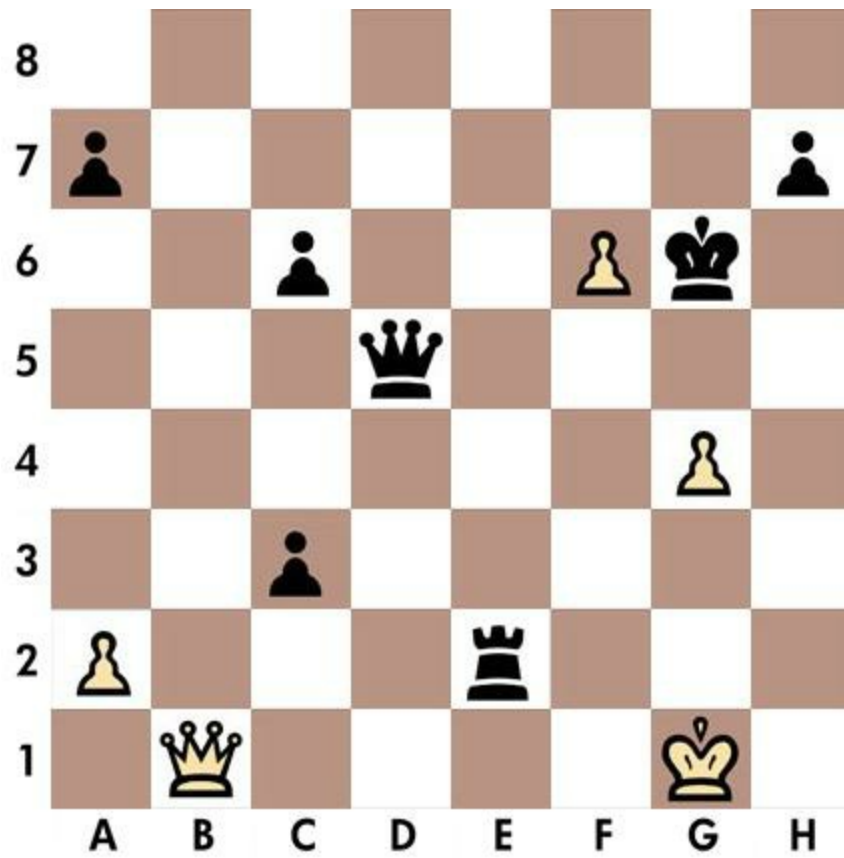


1... h6 2. Kh5 Bf7 3. Rg6 Rf5

Quiz n.2 - Black to move



Solution n.2



1... c2 2. Qf1 c1=R 3. Qxc1 Qg2

Quiz n.3 - White to move

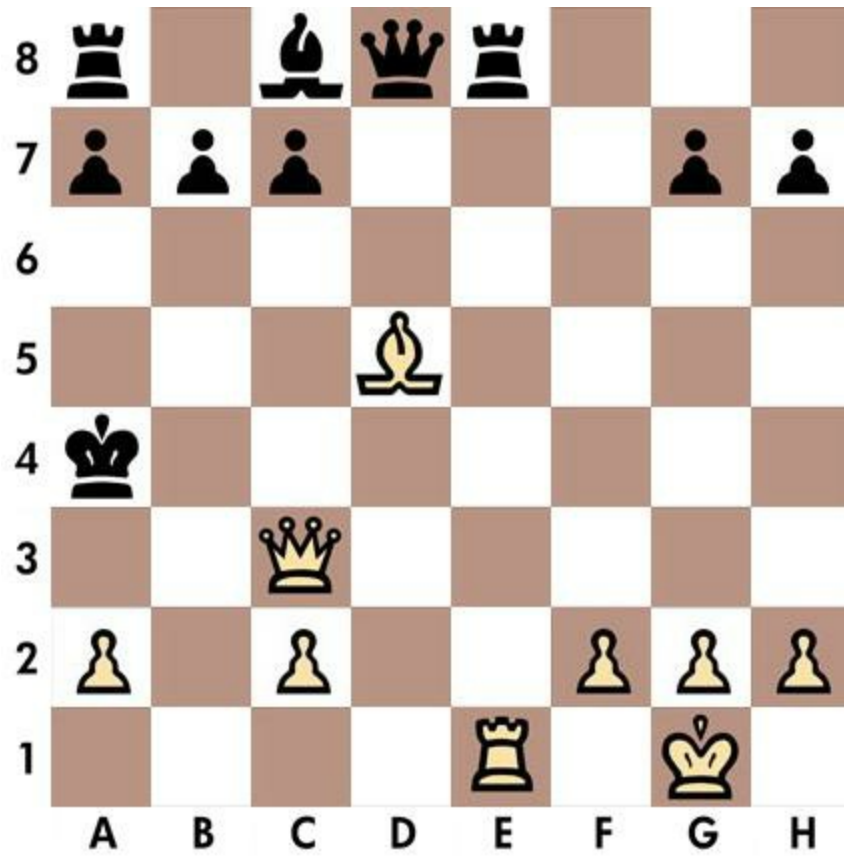


Solution n.3

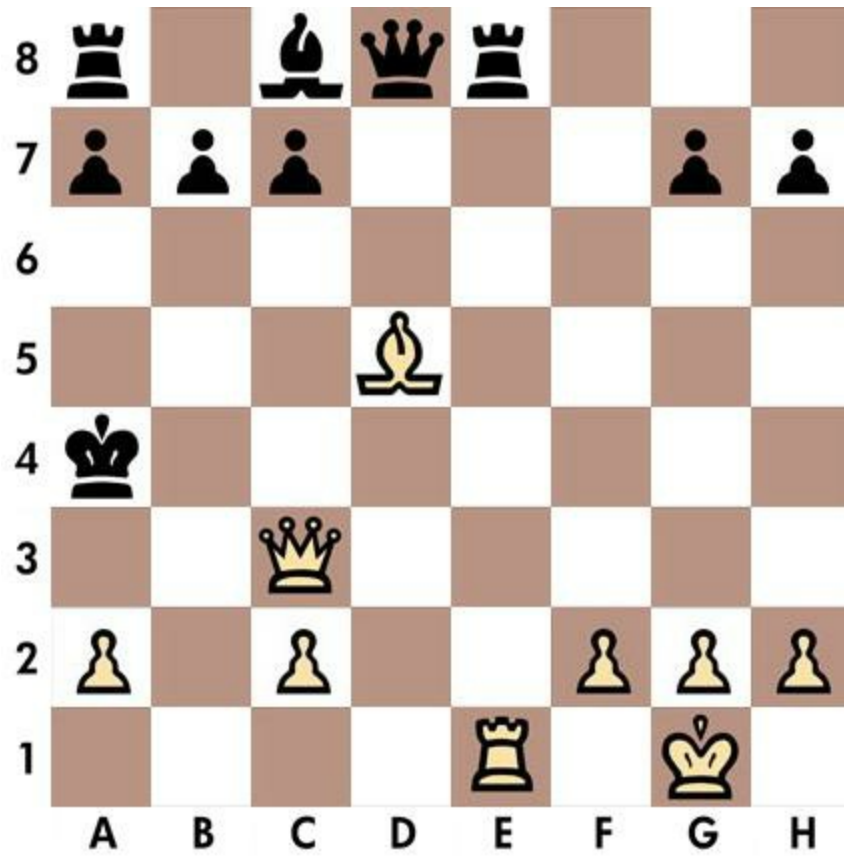


1. Kb5 Ka8 2. c7 a1=Q 3. c8=Q

Quiz n.4 - White to move



Solution n.4



1. Qb3 Ka5 2. Qa3 Kb6 3. Rb1

Quiz n.5 - White to move



Solution n.5



1. Qf6 Kg8 2. Re8 Qf8 3. Ne7

Quiz n.6 - White to move



Solution n.6



1. Qxf4 Kh5 2. g4 Kh4 3. Rh1

Quiz n.7 - White to move



Solution n.7



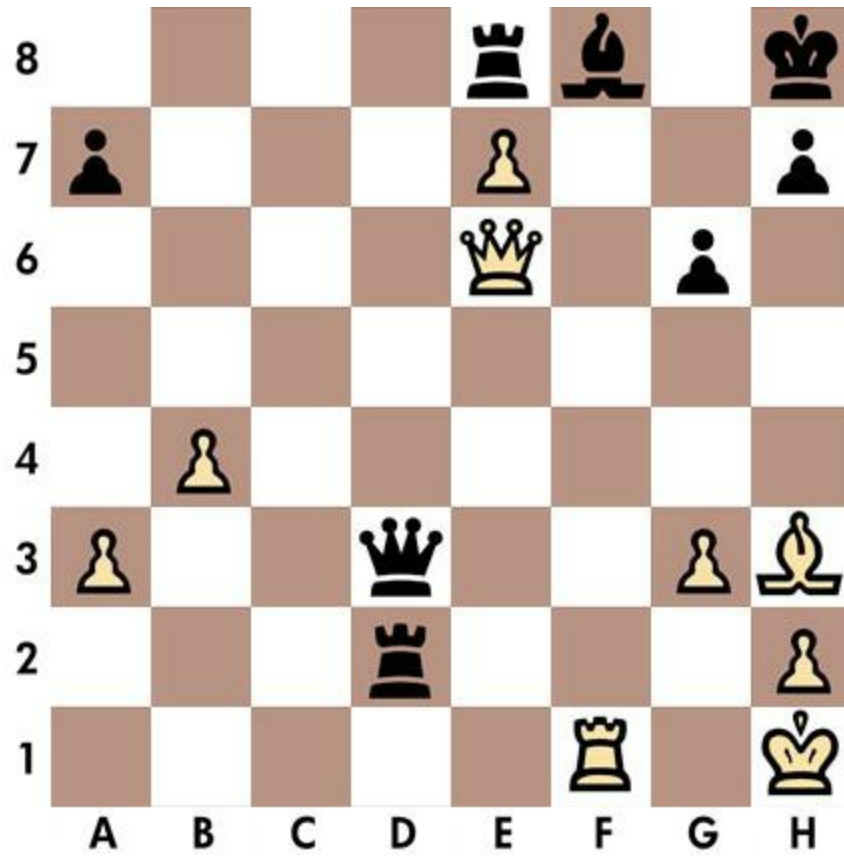
1. Bf2 Kh3 2. Rfb1 Raa8 3. Bf1

Solution n.8



1. Bb6 Kb5 2. Rc5 Ka6 3. Ra5

Quiz n.9 - White to move



Solution n.9

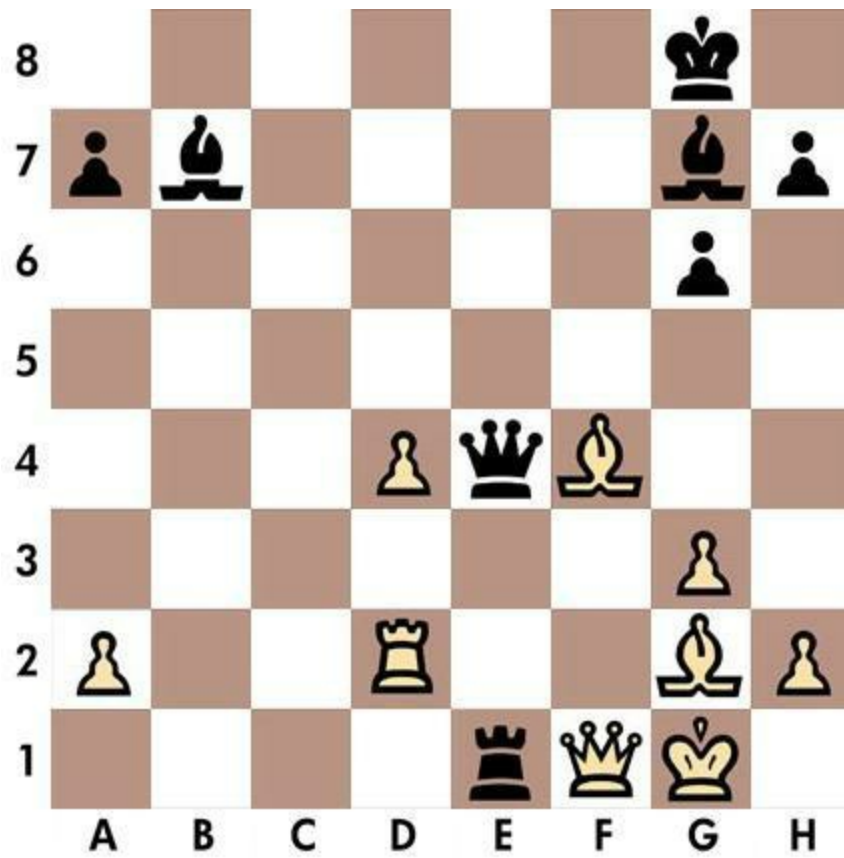


1. Qe5 Bg7 2. Rf8 Rxf8 3. exf8=Q

Quiz n.10 - Black to move



Solution n.10



1... Bxd4 2. Be3 Bxe3 3. Kh1 Rxf1

Chapter 2

Quizzes 11-20

Chess is mental torture.

Kasparov

Quiz n.11 - White to move



Solution n.11



1. Kf2 Rg8 2. g3 Rxc3 3. hxg3

Solution n.12



1. Qc4 Kh8 2. Rh5 Rh7 3. Rxf7

Solution n.13



1. Rxa6 Rxa6 2. Qd7 Kb6 3. c5

Solution n.14



1... g5 2. Kh5 Bg6 3. Rxb6 fxb6

Quiz n.15 - Black to move



Solution n.15

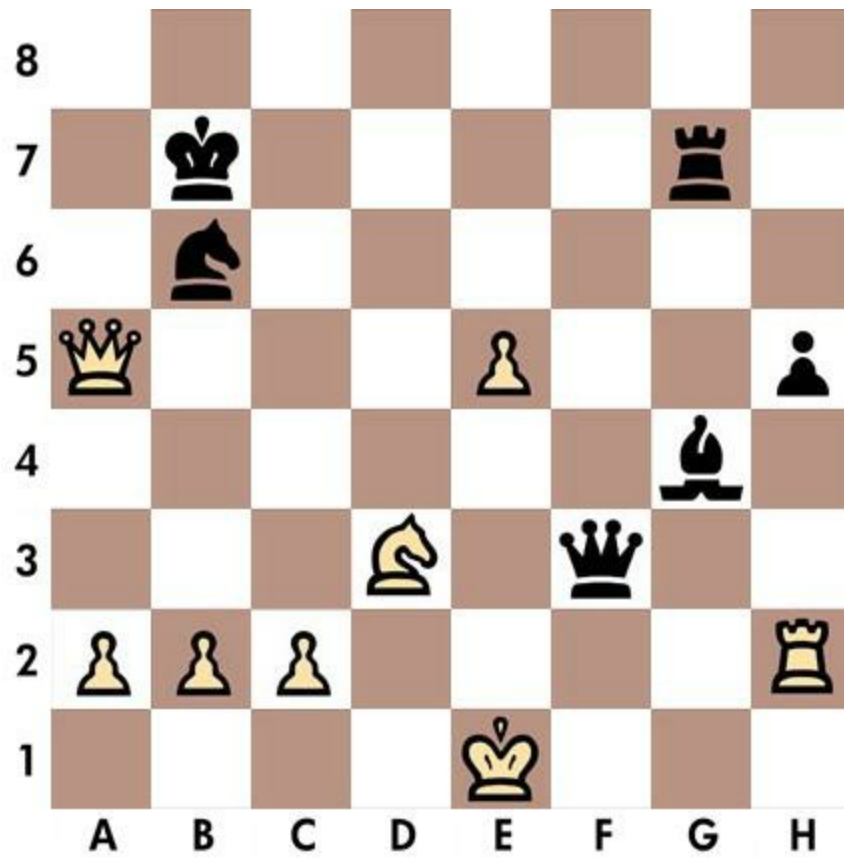


1... Bh6 2. Re3 Bxe3 3. Ke2 Rf2

Quiz n.16 - Black to move

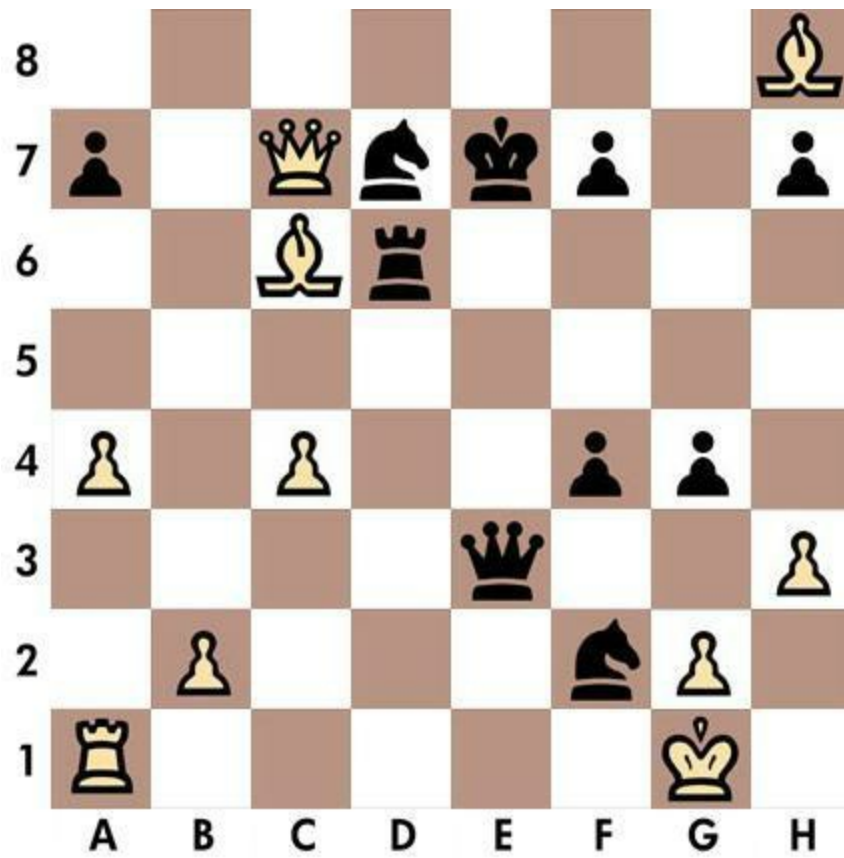


Solution n.16

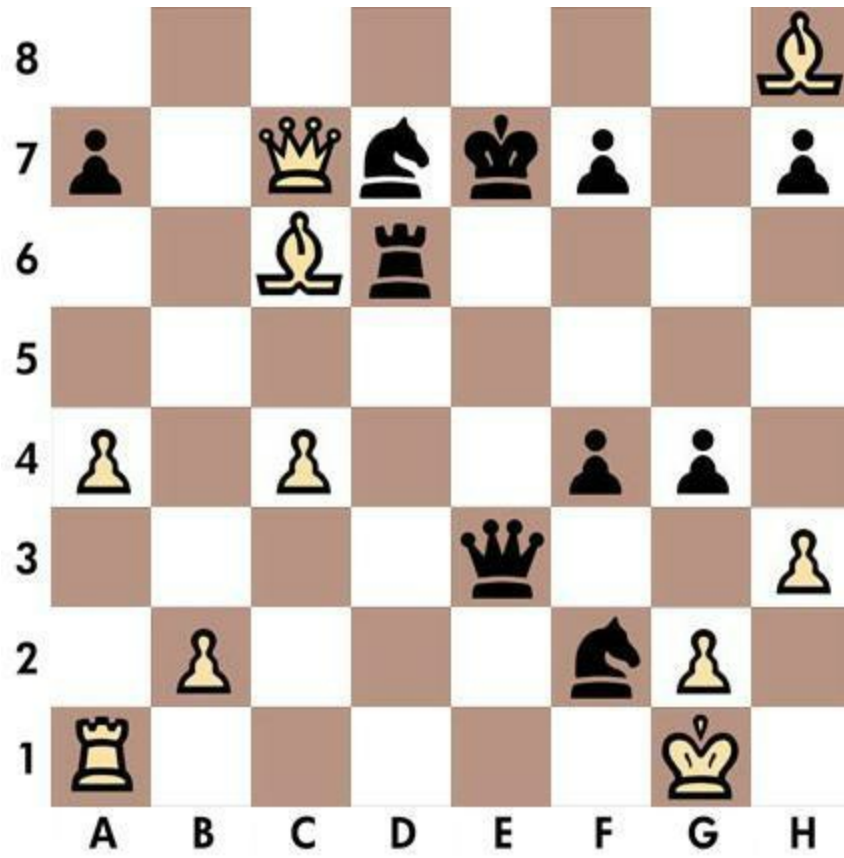


1... Qe3 2. Kf1 Bh3 3. Rxh3 Rg1

Quiz n.17 - Black to move

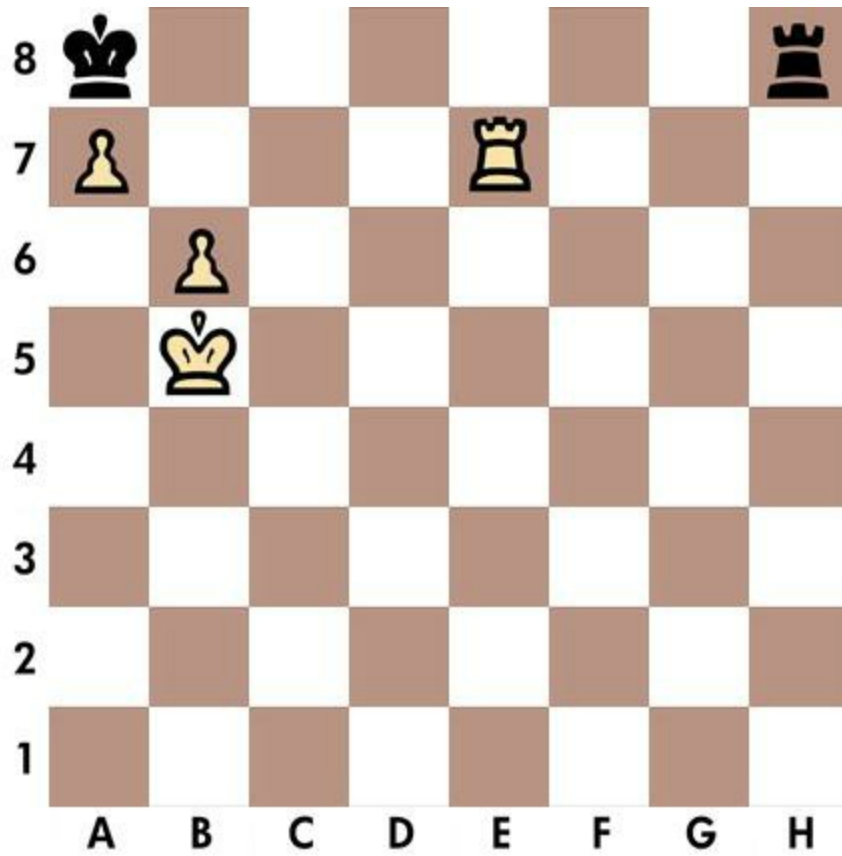


Solution n.17



1... Nd1 2. Kh2 g3 3. Kh1 Qe1

Solution n.18



1. Ka6 Rb8 2. axb8=Q Kxb8 3. Re8

Quiz n.19 - White to move



Solution n.19



1. fxg7 Kh5 2. Qg4 Kh6 3. g8=N

Quiz n.20 - White to move



Solution n.20



1. Nf6 Kg7 2. Qxh7 Kxf6 3. Ng4

Chapter 3

Quizzes 21-30

Chess, like love, like music, has the power to make men happy.

Tarrasch

Quiz n.21 - White to move



Solution n.21



1. Re6 Kg5 2. Qh6 Kf5 3. g4

Quiz n.22 - Black to move



Solution n.22



1... Qxg2 2. Kh4 Nf5 3. Kh5 g6

Quiz n.23 - White to move



Solution n.23



1. Re5 Nxe5 2. f4 Kg4 3. h3

Solution n.24



1. Bd2 Qxd2 2. Nc4 Ka4 3. b3

Quiz n.25 - White to move



Solution n.25



1. Qa4 Kb6 2. Ne6 Nd4 3. Bxd4

Quiz n.26 - White to move



Solution n.26



1. Qg7 Rg6 2. Qxg6 Kh4 3. Nf5

Quiz n.27 - White to move



Solution n.27



1. h4 Rh8 2. Qh7 Rxf7 3. Rxf7

Quiz n.28 - White to move



Solution n.28



1. Bf6 Kxh7 2. Qh6 Kxh6 3. Rh4

Quiz n.29 - Black to move



Solution n.29



1... Bg4 2. Ke1 Qg3 3. Kf1 Rh1

Quiz n.30 - White to move



Solution n.30



1. Re4 Kf5 2. Re3 Kf4 3. g3

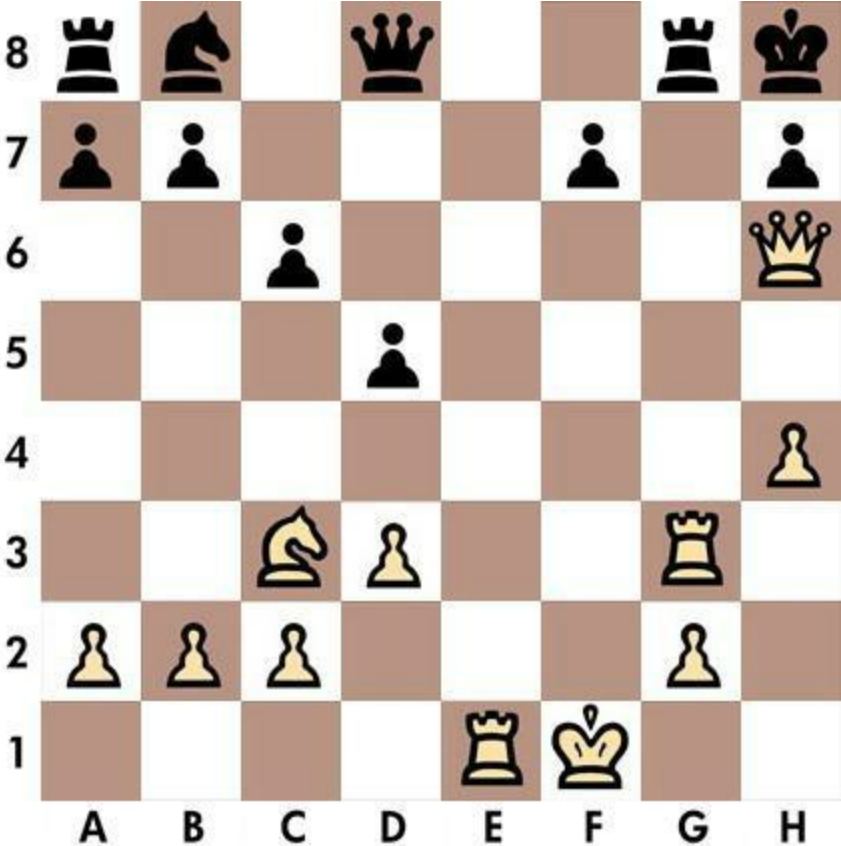
Chapter 4

Quizzes 31-40

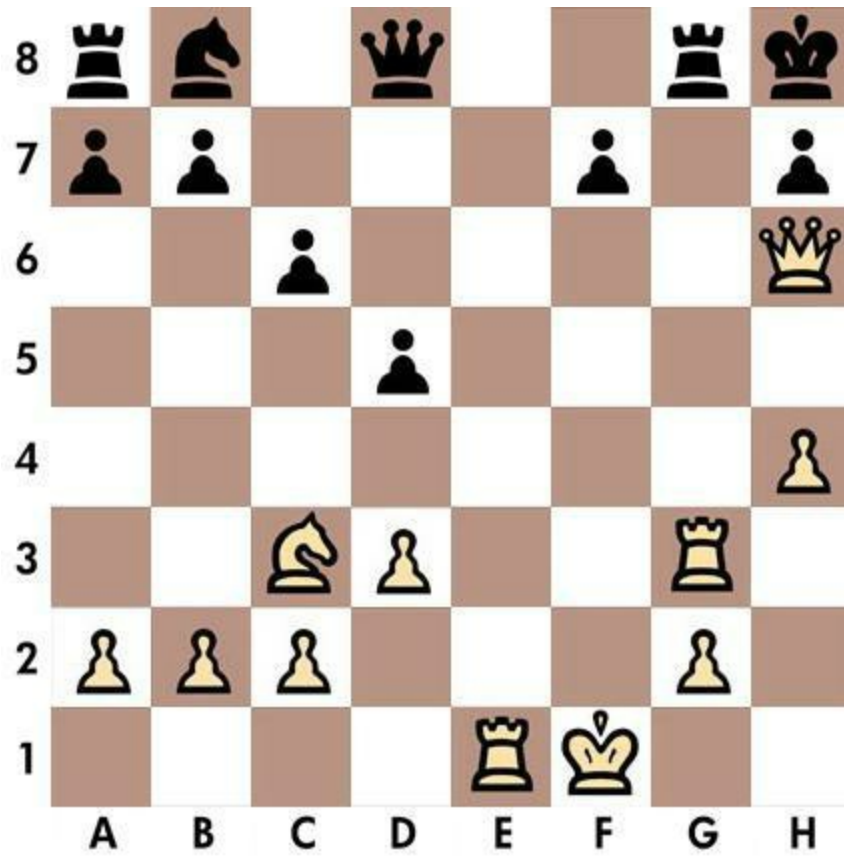
All that matters on the chessboard is good moves.

Fischer

Quiz n.31 - White to move



Solution n.31



1. Re8 Qxe8 2. Qf6 Rg7 3. Qxg7

Quiz n.32 - White to move



Solution n.32



1. g6 Rxc6 2. fxg6 Kxc6 3. Qf5

Quiz n.33 - White to move



Solution n.33



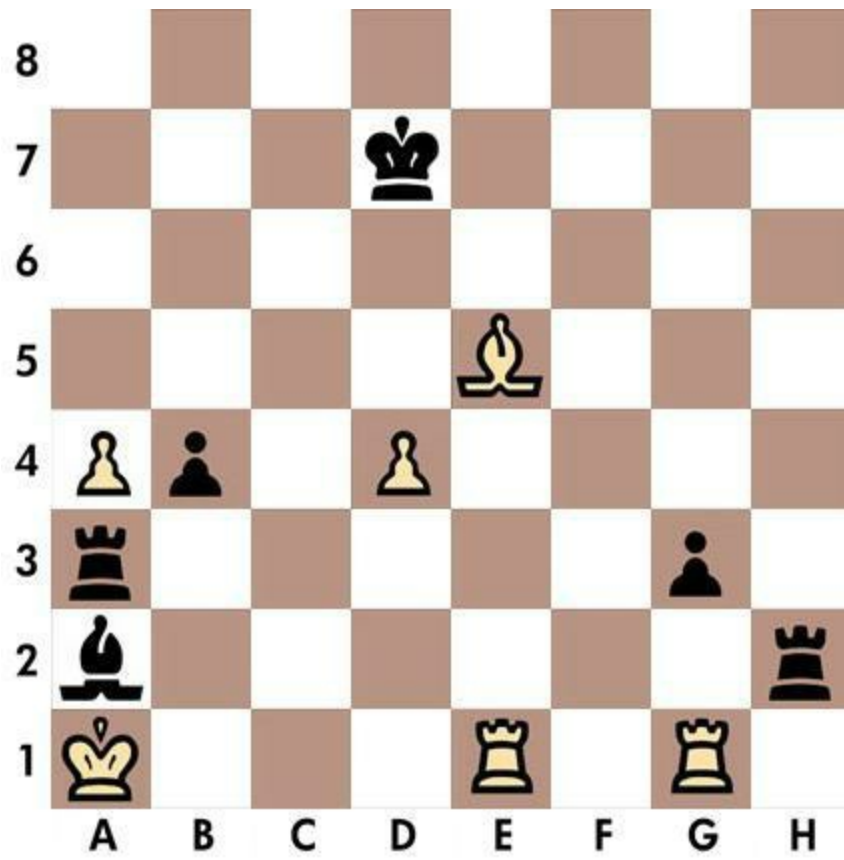
1. Rg6 Rg7 2. Bxd5 Rff7 3. Qxg7

Solution n.34

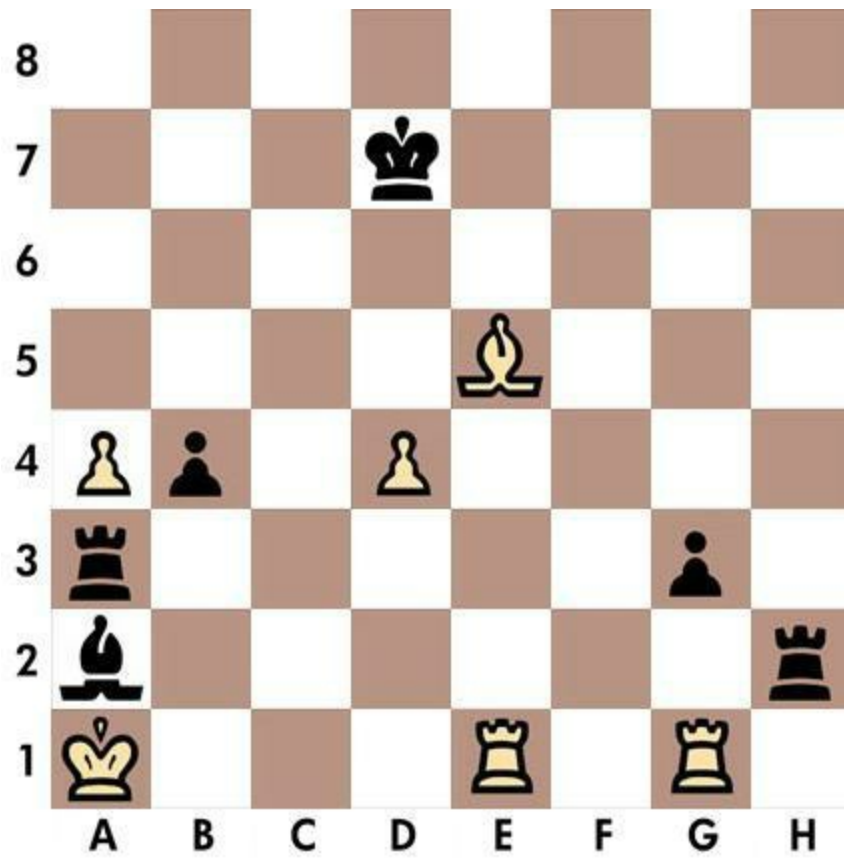


1... Rg3 2. Kxg3 g1=Q 3. Kh3 Qg2

Quiz n.35 - Black to move



Solution n.35



1... Bc4 2. Kb1 Bd3 3. Kc1 Ra1

Quiz n.36 - White to move

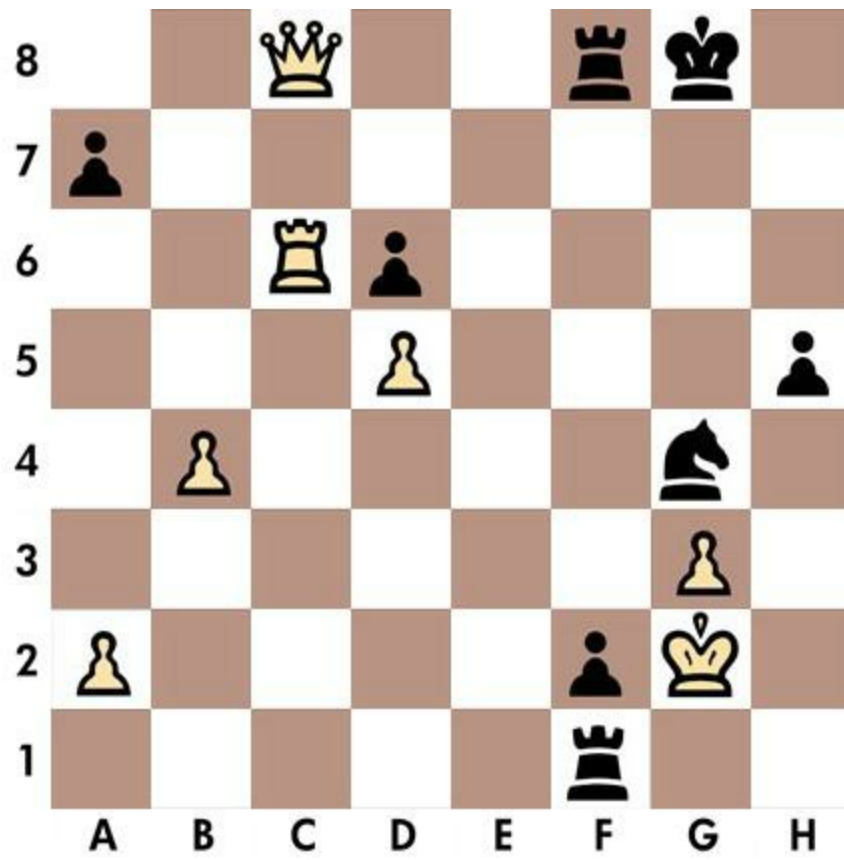


Solution n.36



1. Qh7 Kg4 2. f3 Kf4 3. Qe4

Quiz n.37 - Black to move

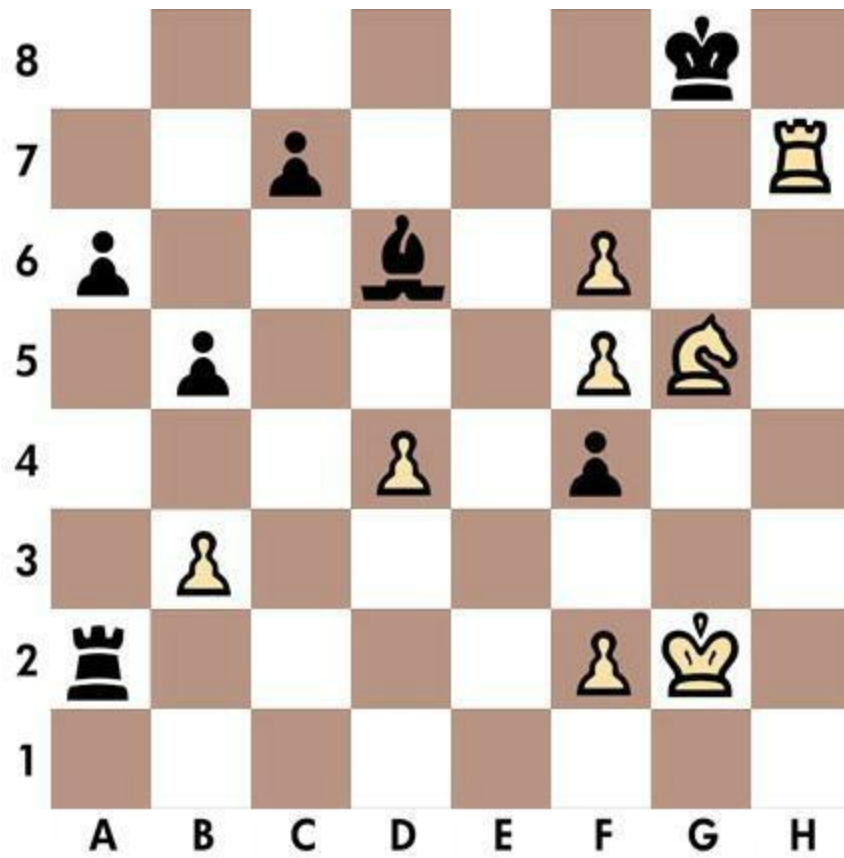


Solution n.37



1... Rg1 2. Kh3 Rh1 3. Kg2 f1=Q

Solution n.38



1. f7 Kf8 2. Ne6 Ke7 3. f8=Q

Quiz n.39 - Black to move



Solution n.39



1... Ba4 2. Ke1 Rc1 3. Nxc1 Qf2

Quiz n.40 - White to move



Solution n.40



1. h7 Kg7 2. Bf6 Kh6 3. h8=Q

Chapter 5

Quizzes 41-50

The combination player thinks forward. He starts from the given position, and tries the forceful moves in his mind.

Lasker

Quiz n.41 - Black to move

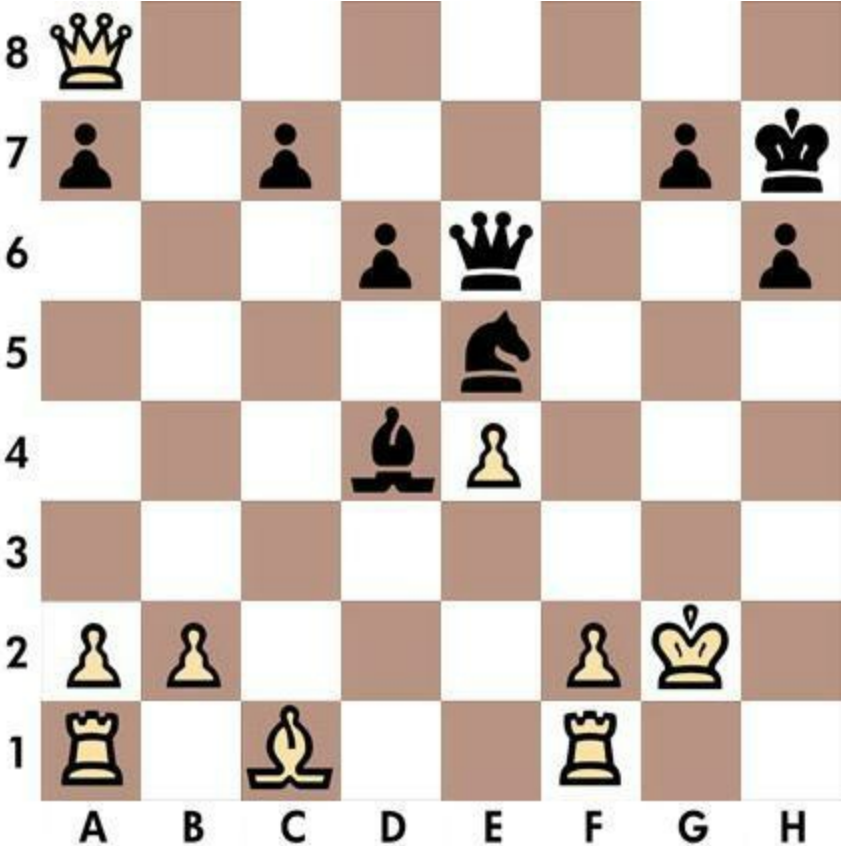


Solution n.41



1... Ng2 2. Kg5 Be3 3. Kh5 g6

Quiz n.42 - Black to move



Solution n.42



1... Qg4 2. Kh1 Qh3 3. Kg1 Nf3

Quiz n.43 - White to move

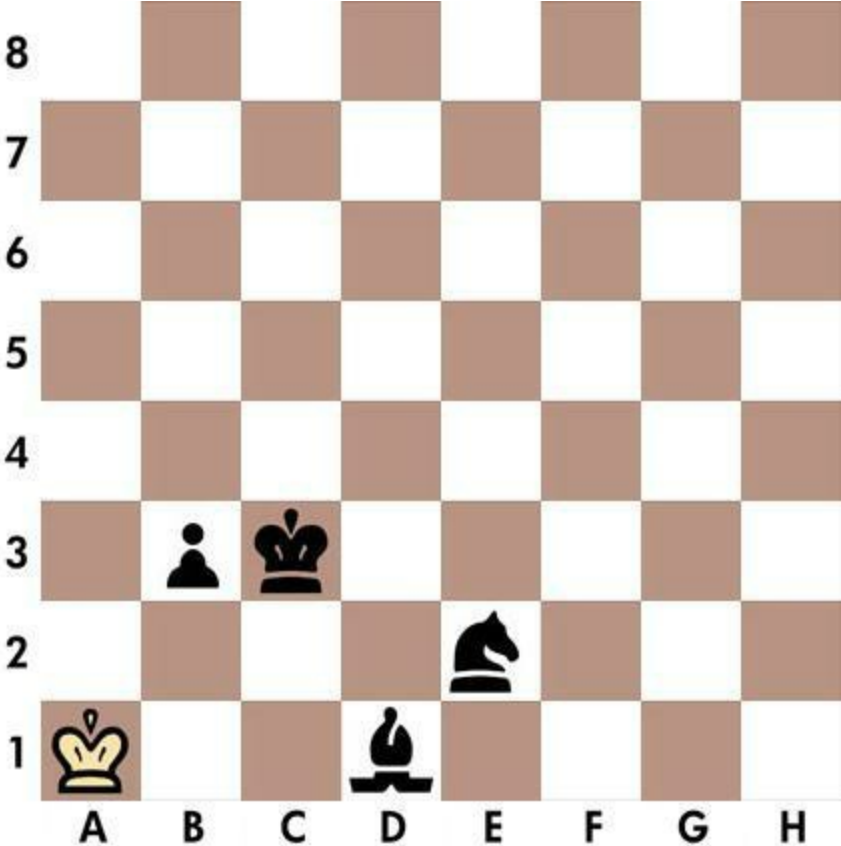


Solution n.43

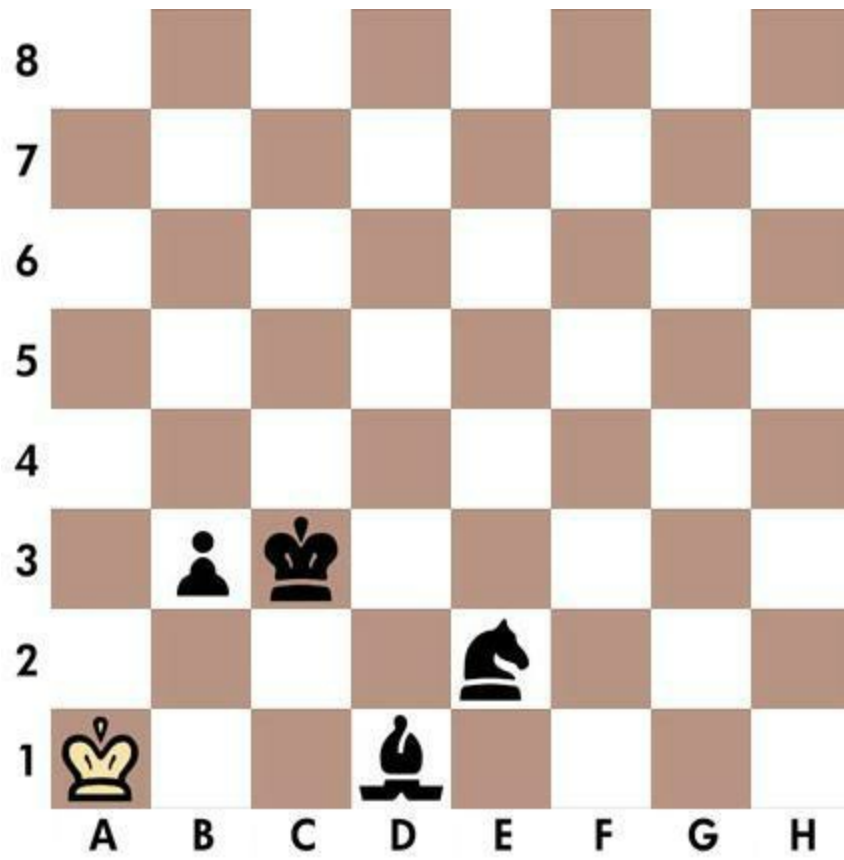


1. Nh6 Kh8 2. Nxf7 Kg8 3. Rxf7

Quiz n.44 - Black to move

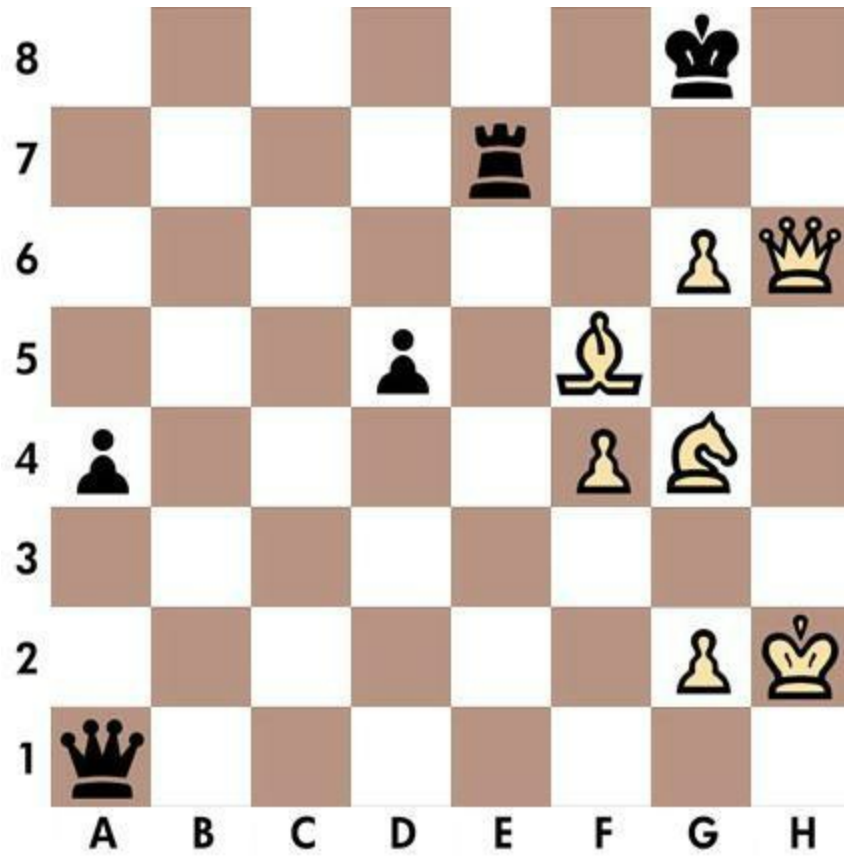


Solution n.44

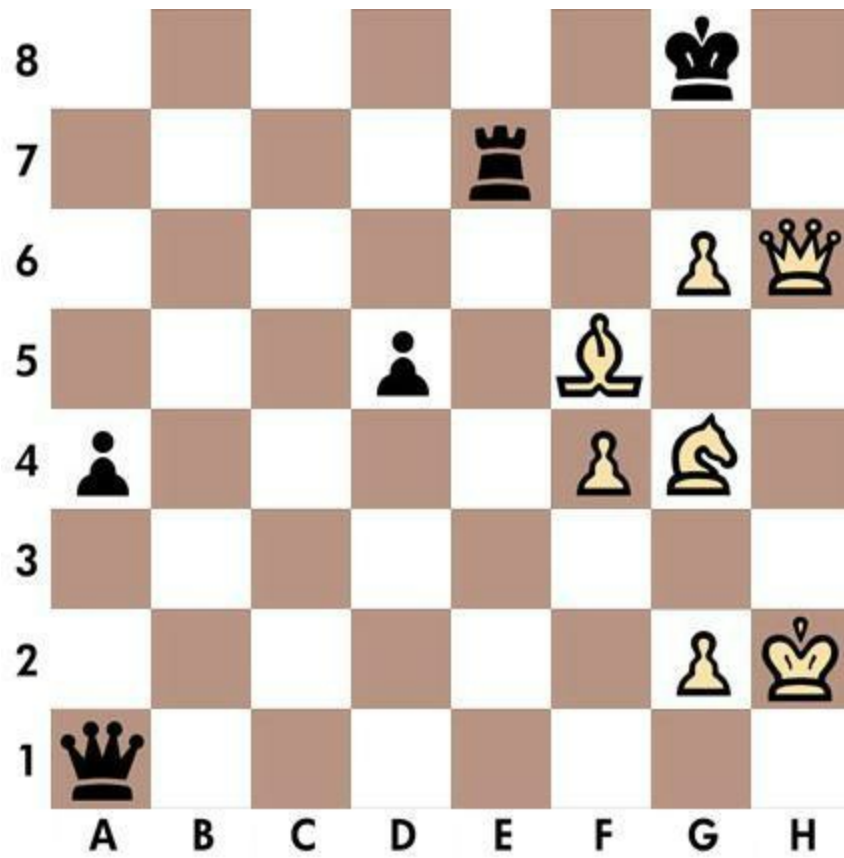


1... Nc1 2. Kb1 Bc2 3. Kxc1 b2

Quiz n.45 - White to move



Solution n.45



1. Be6 Rxe6 2. Qh7 Kf8 3. Qf7

Quiz n.46 - White to move

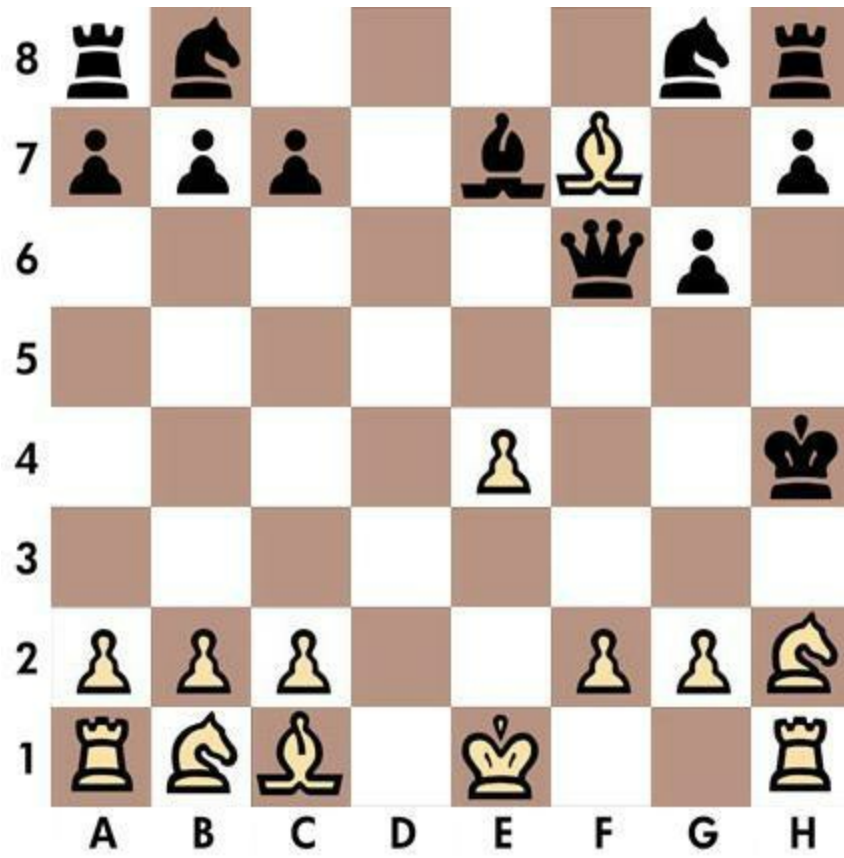


Solution n.46

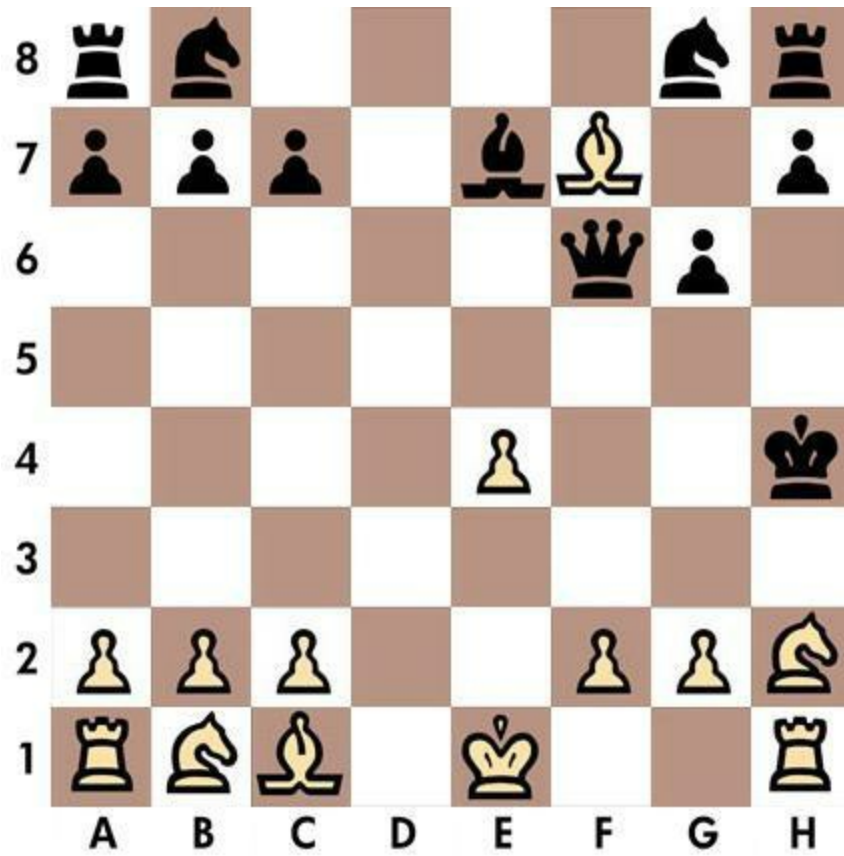


1. Qxf8 Kh7 2. Qf7 Kh8 3. Be5

Quiz n.47 - White to move



Solution n.47



1. Nf1 Kg4 2. Be6 Qxe6 3. f3

Quiz n.48 - White to move



Solution n.48

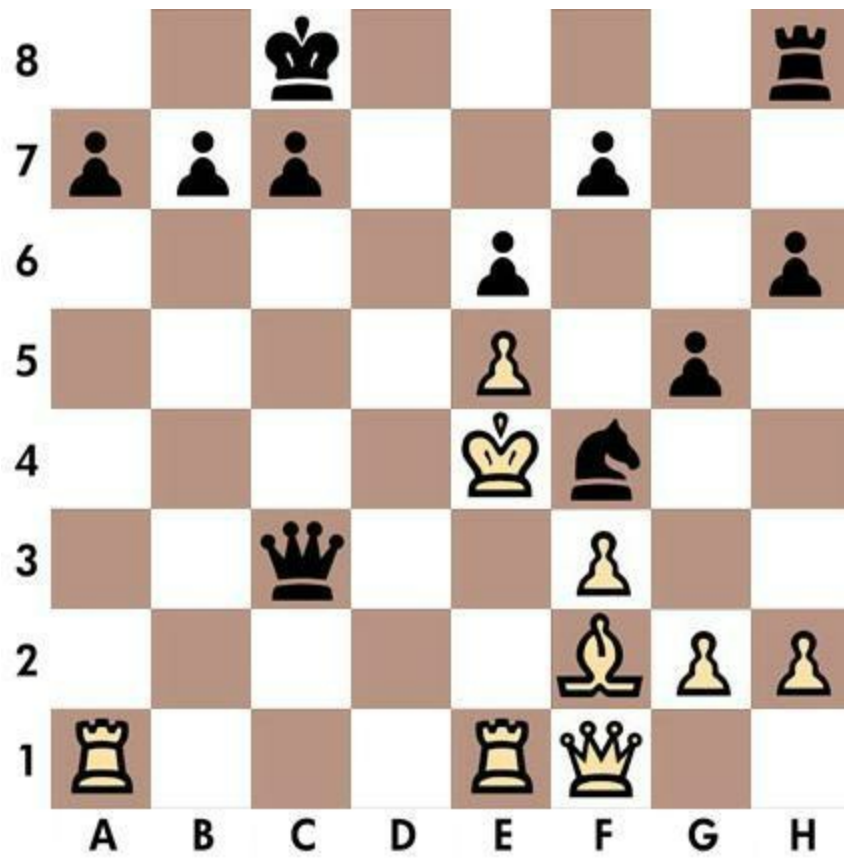


1. Rxd7 Kc8 2. Qc6 bxc6 3. Ba6

Quiz n.49 - Black to move

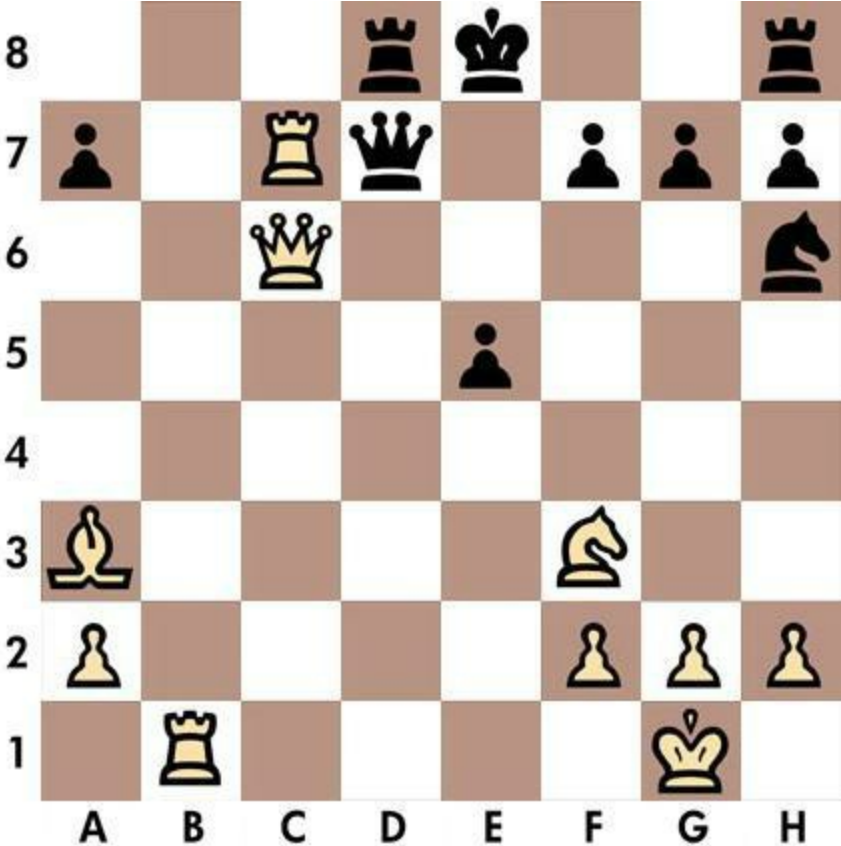


Solution n.49



1... Qc2 2. Kd4 c5 3. Ke3 Nd5

Quiz n.50 - White to move



Solution n.50



1. Rxd7 e4 2. Rxa7 Rd7 3. Qxd7

Chapter 6

Quizzes 51-60

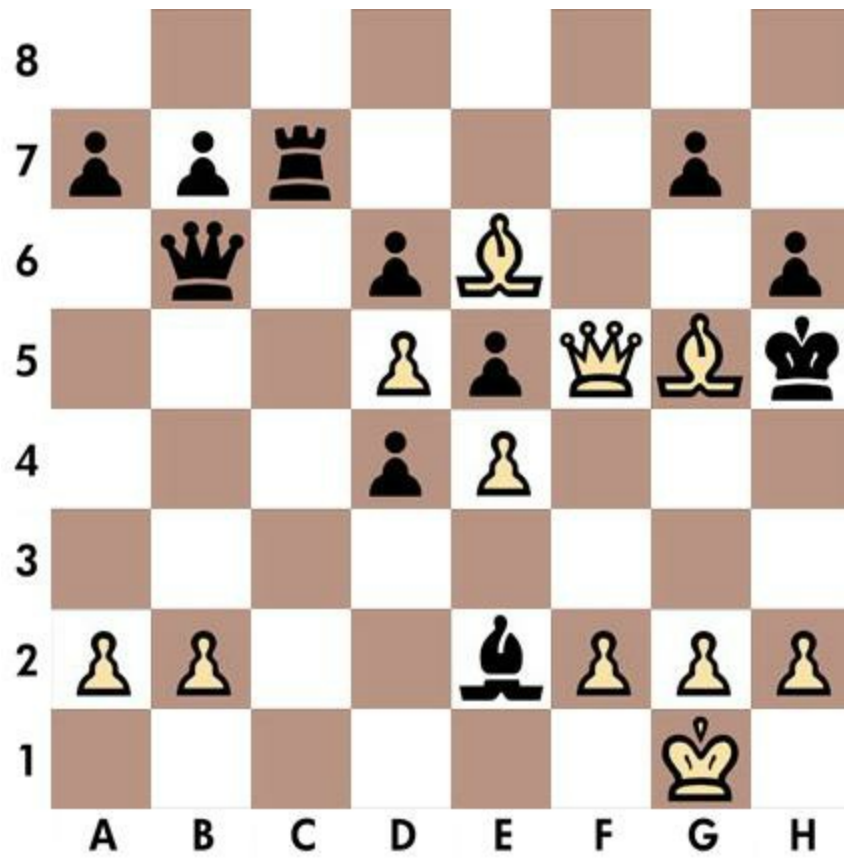
Good players develop a tactical instinct, a sense of what is possible or likely and what is not worth calculating.

Reshevsky

Quiz n.51 - White to move

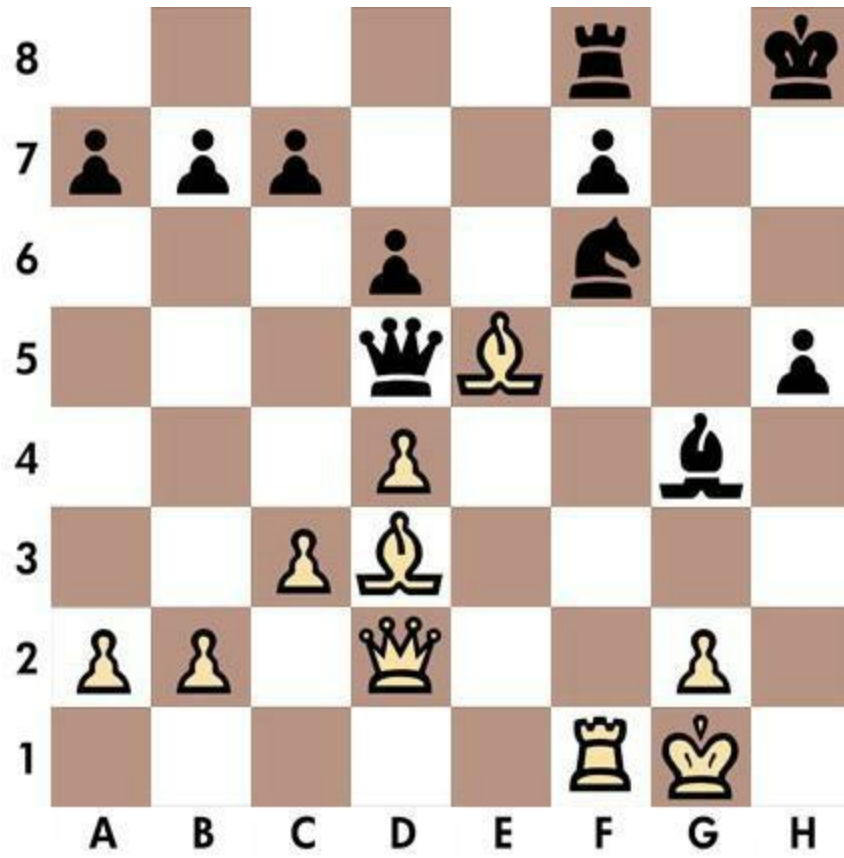


Solution n.51

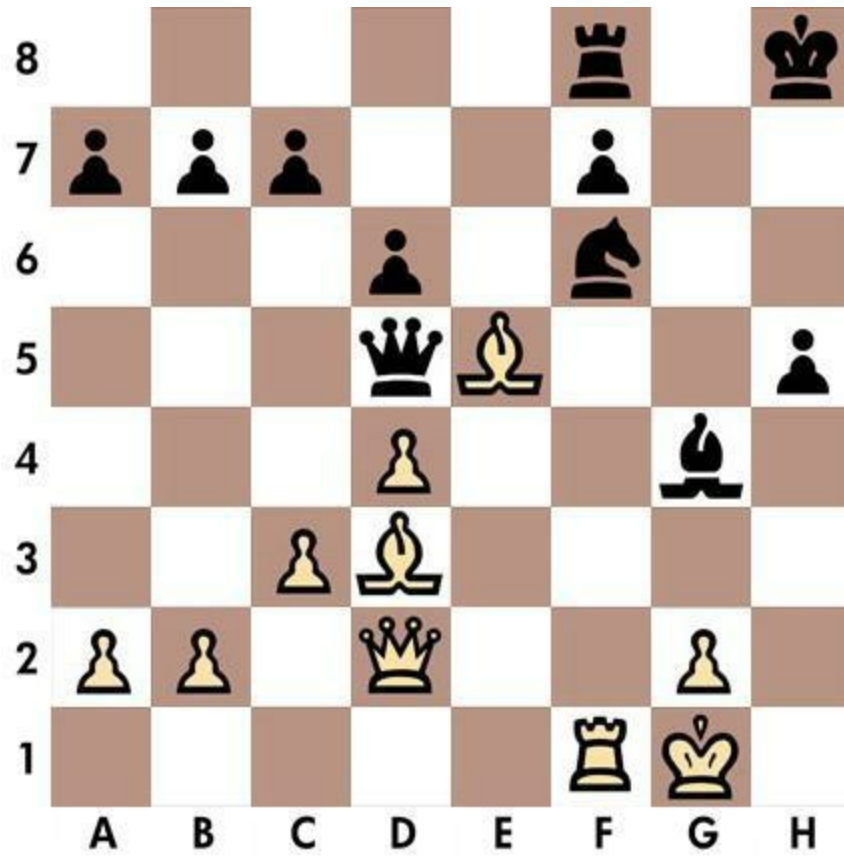


1. Be7 g5 2. Bf7 Kh4 3. g3

Quiz n.52 - White to move

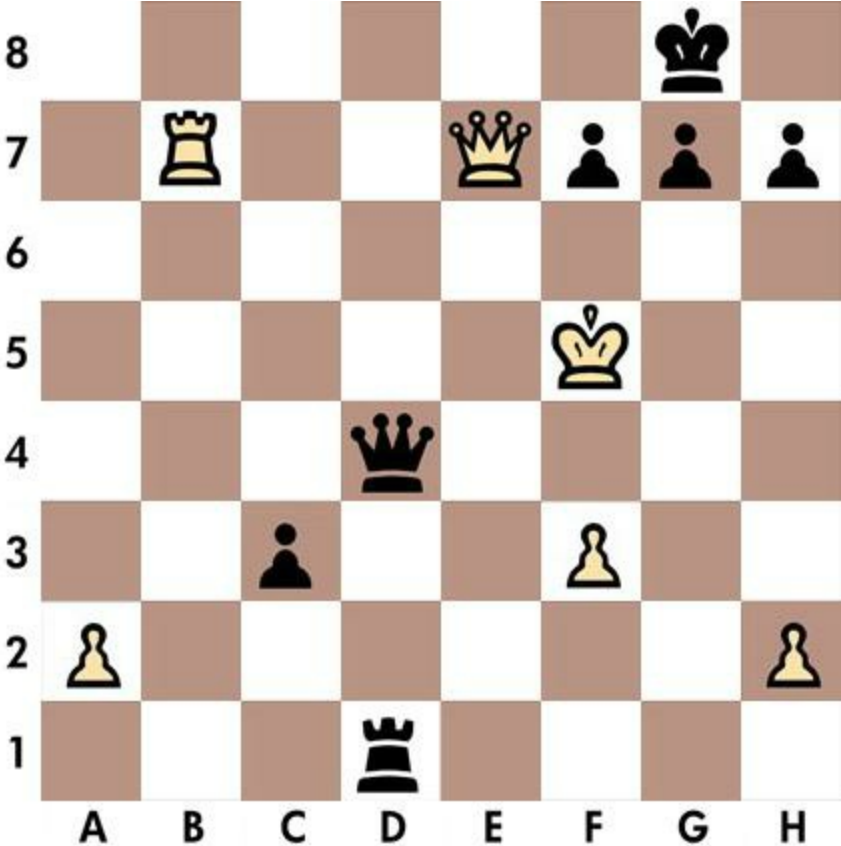


Solution n.52

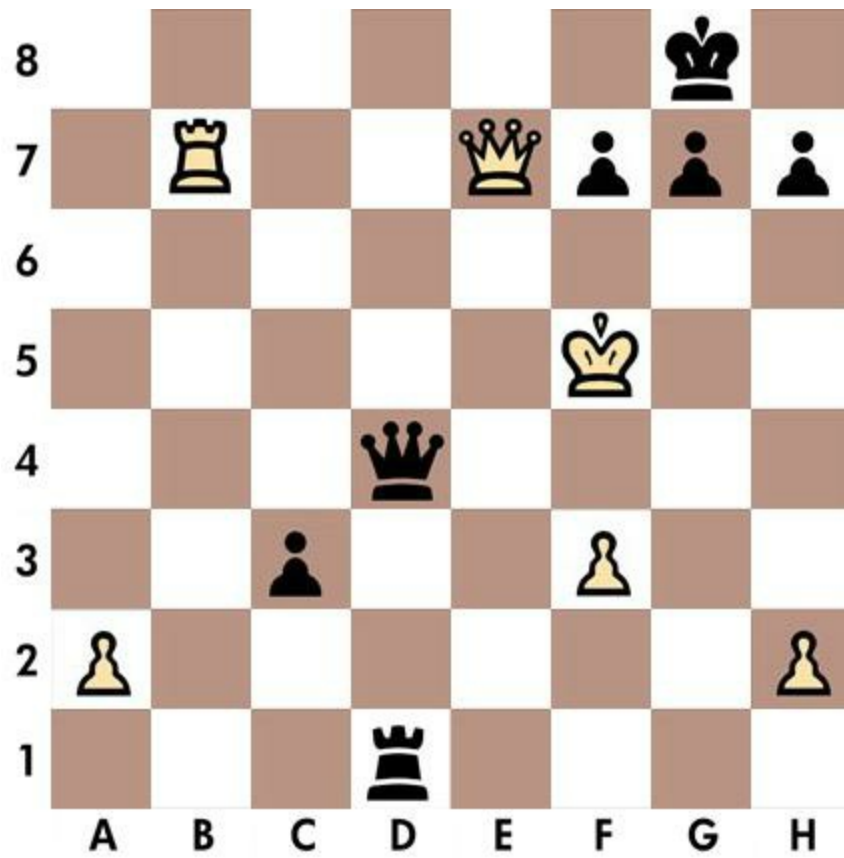


1. Qh6 Kg8 2. Qg5 Kh8 3. Bxf6

Quiz n.53 - Black to move



Solution n.53



1... g6 2. Kg5 Rg1 3. Kh6 Qg7

Quiz n.54 - Black to move



Solution n.54



1... Qf4 2. Kh4 Rh5 3. Kxh5 Qg5

Quiz n.55 - White to move

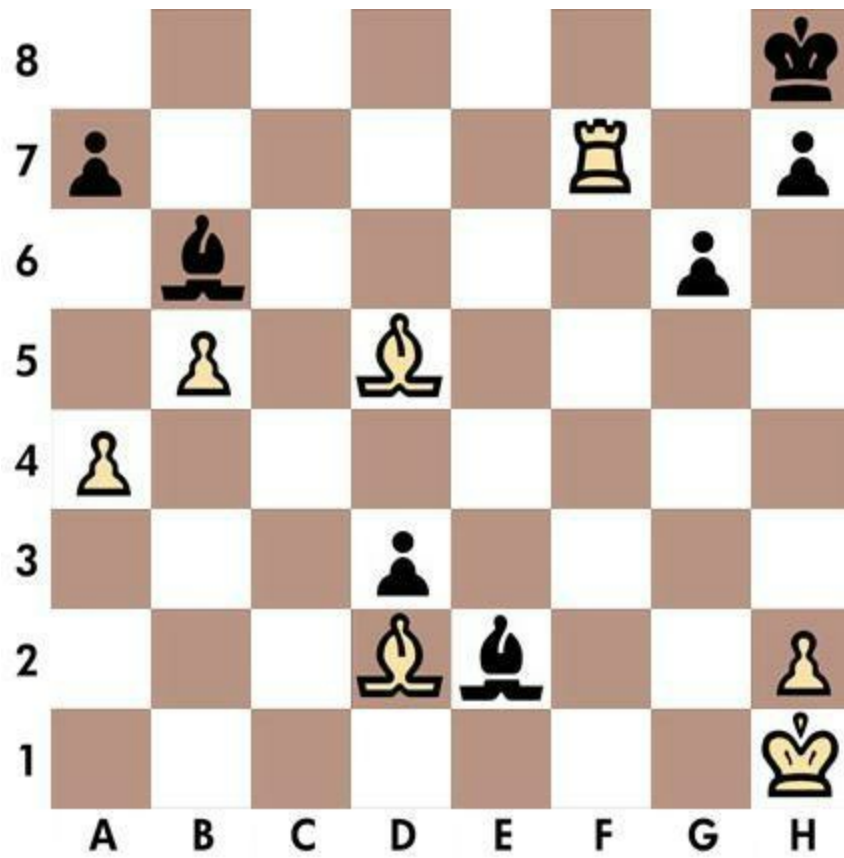


Solution n.55



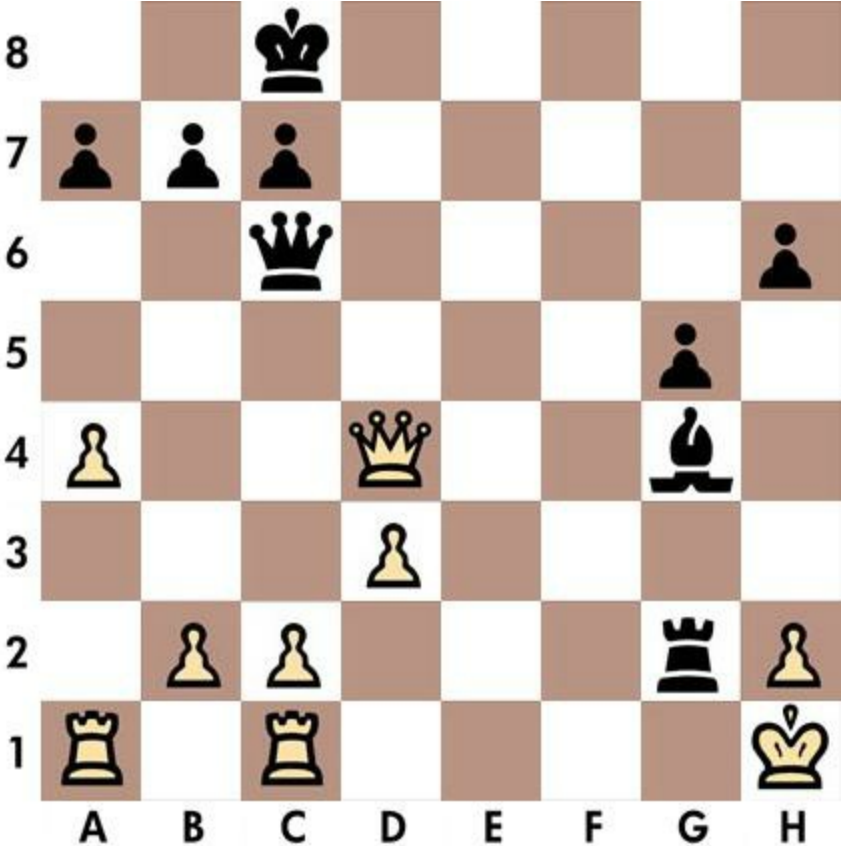
1. Nf7 Qg3 2. Rxc3 Kh7 3. Qxh5

Solution n.56

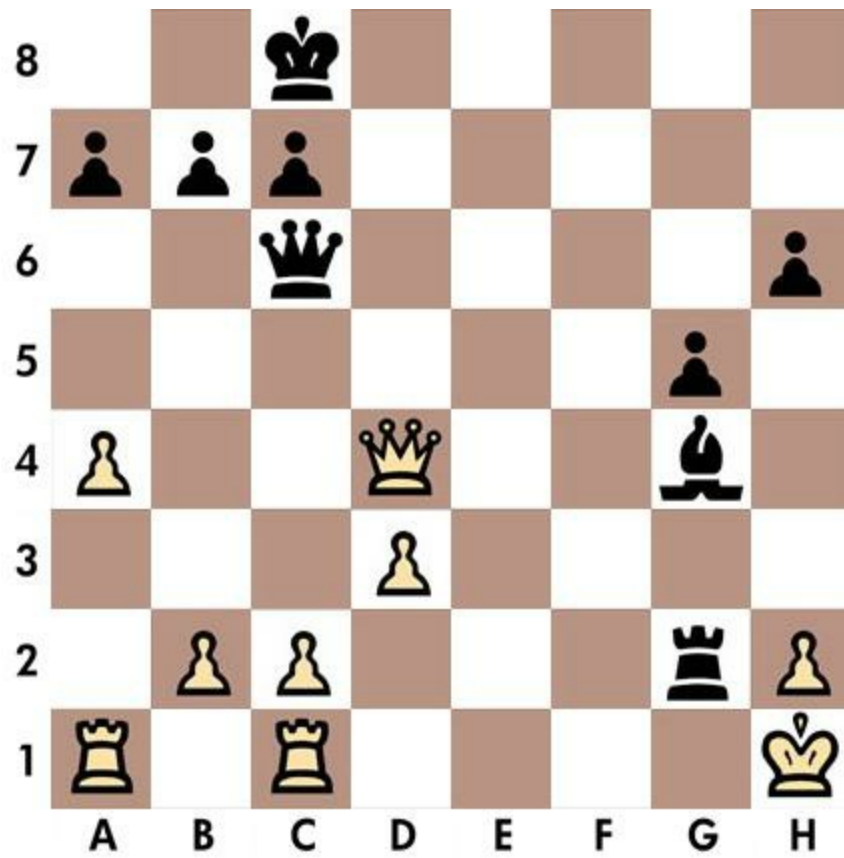


1. Bc3 Bd4 2. Bxd4 Kg8 3. Rf1

Quiz n.57 - Black to move



Solution n.57



1... Rg3 2. Qe4 Bf3 3. Qxf3 Qxf3

Quiz n.58 - White to move

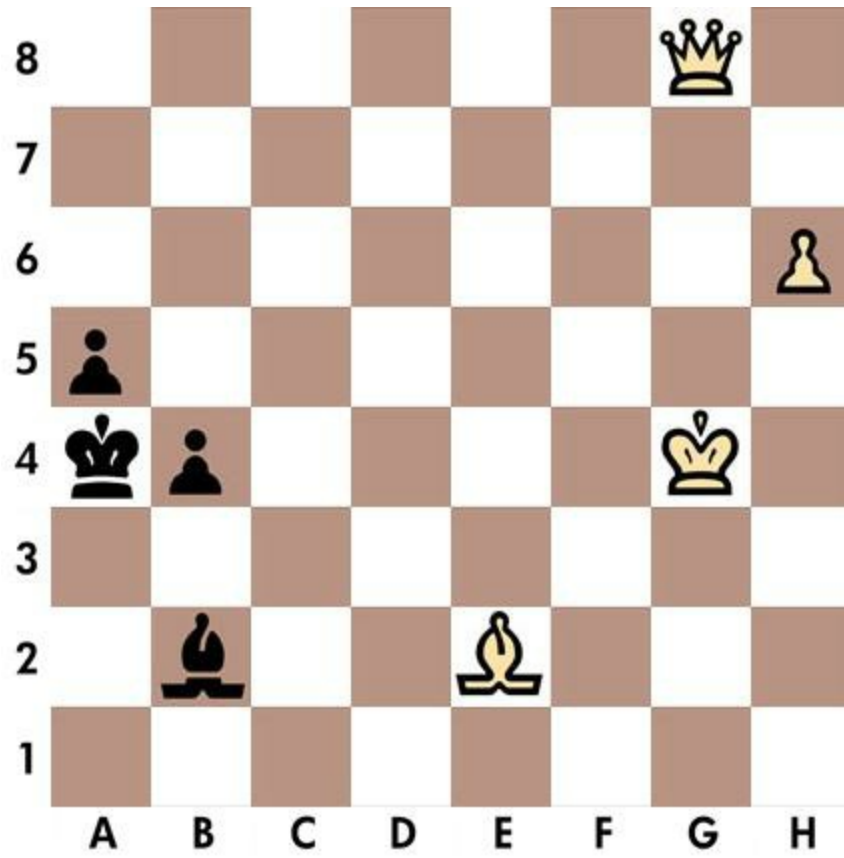


Solution n.58

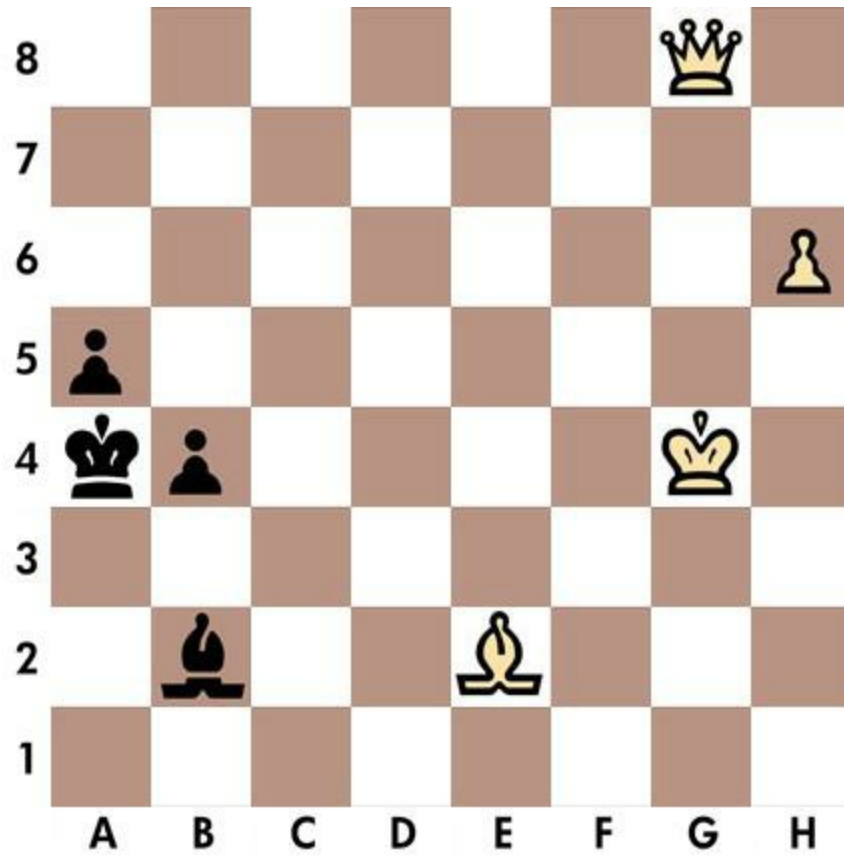


1. Qg6 Kf8 2. Re8 Rxe8 3. fxe8=Q

Quiz n.59 - White to move

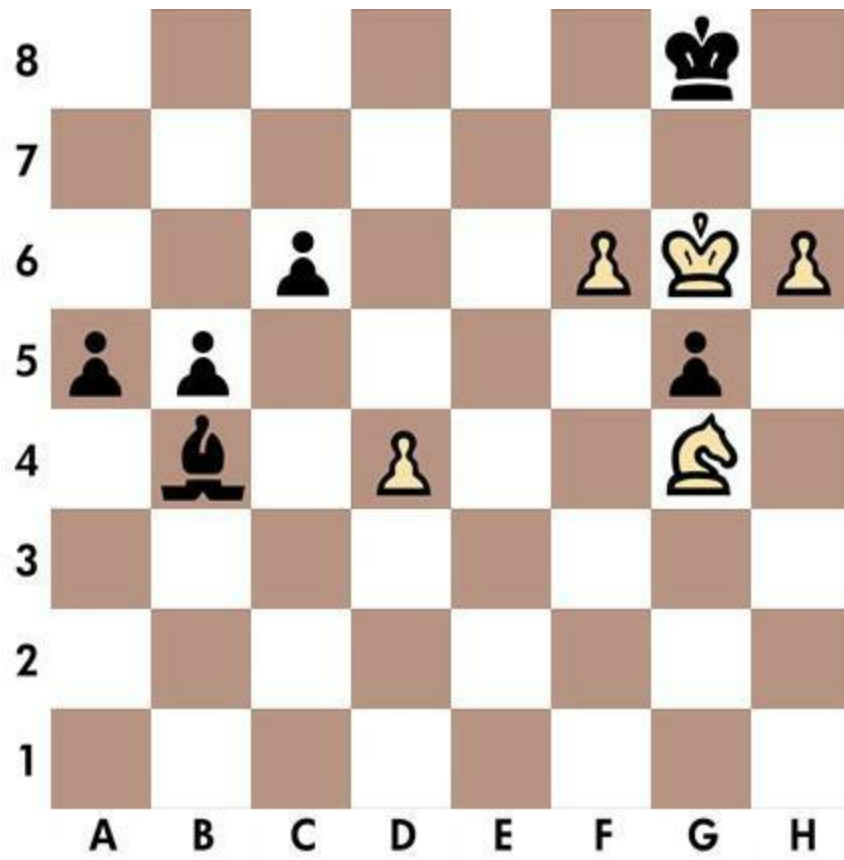


Solution n.59



1. Qa2 Ba3 2. Bc4 b3 3. Qxb3

Solution n.60



1. h7 Kh8 2. Ne5 a4 3. Nf7

Chapter 7

Quizzes 61-70

Even the laziest king flees wildly in the face of double check.

Nimzowitsch

Quiz n.61 - White to move

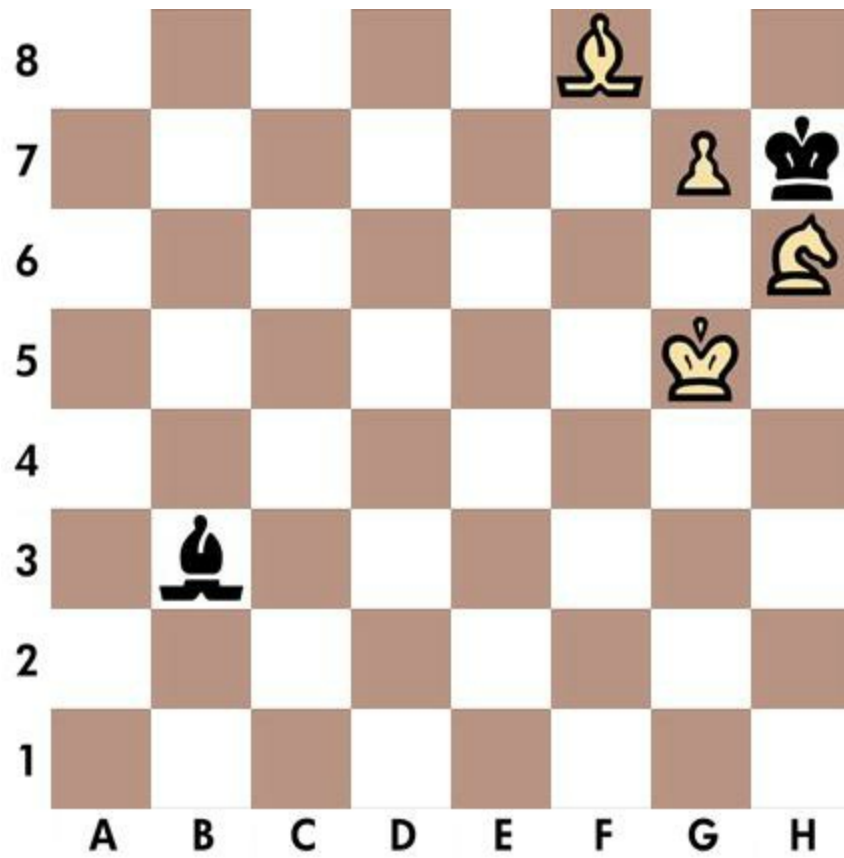


Solution n.61



1. Rxf7 Kg8 2. Nf6 Kh8 3. Rh7

Solution n.62

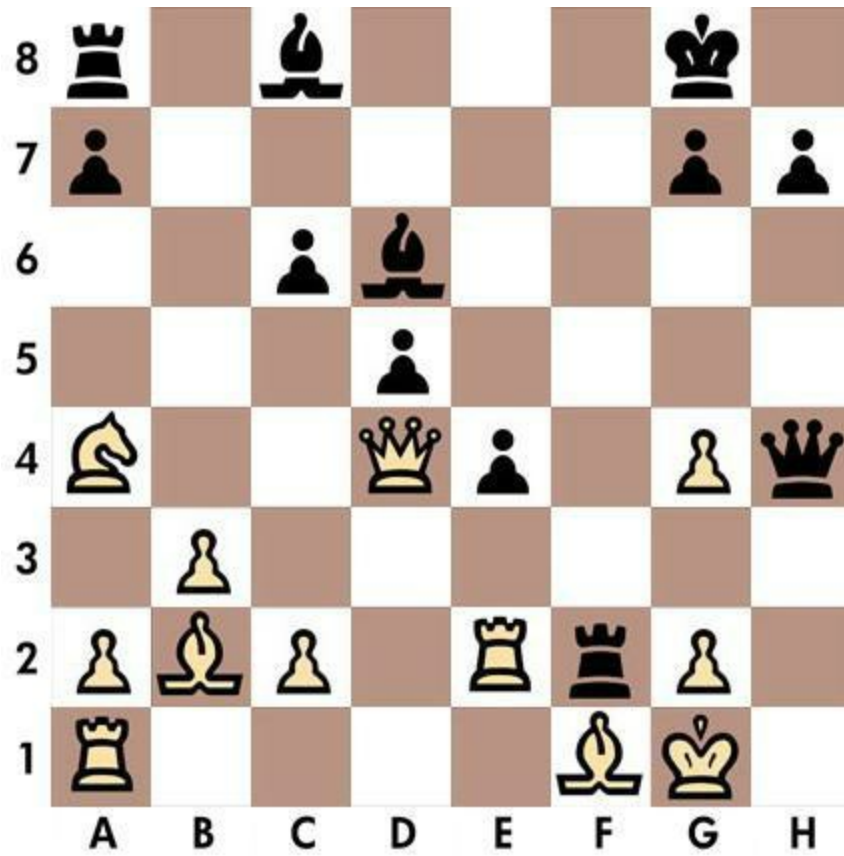


1. Ng4 Kg8 2. Nf6 Kf7 3. g8=Q

Quiz n.63 - Black to move



Solution n.63



1... Bh2 2. Kh1 Bg3 3. Kg1 Qh2

Quiz n.64 - White to move



Solution n.64



1. Qxh7 Kxh7 2. Bf8 Qh4 3. Rxh4

Quiz n.65 - White to move



Solution n.65

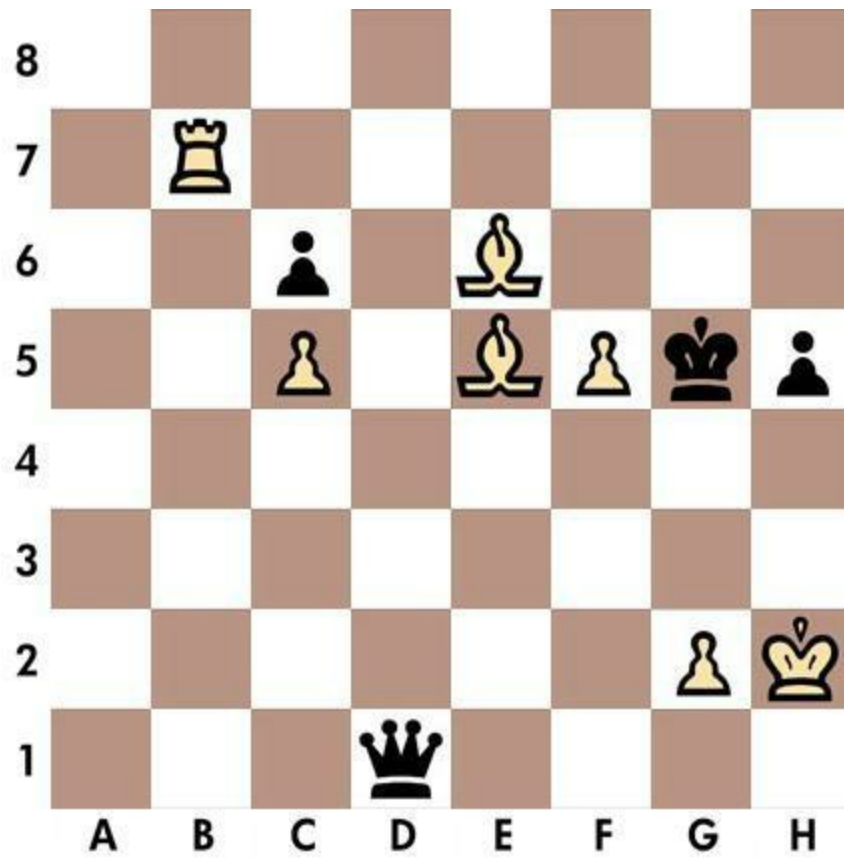


1. Qxg7 Ke8 2. Bb5 Bd7 3. f7

Quiz n.66 - White to move

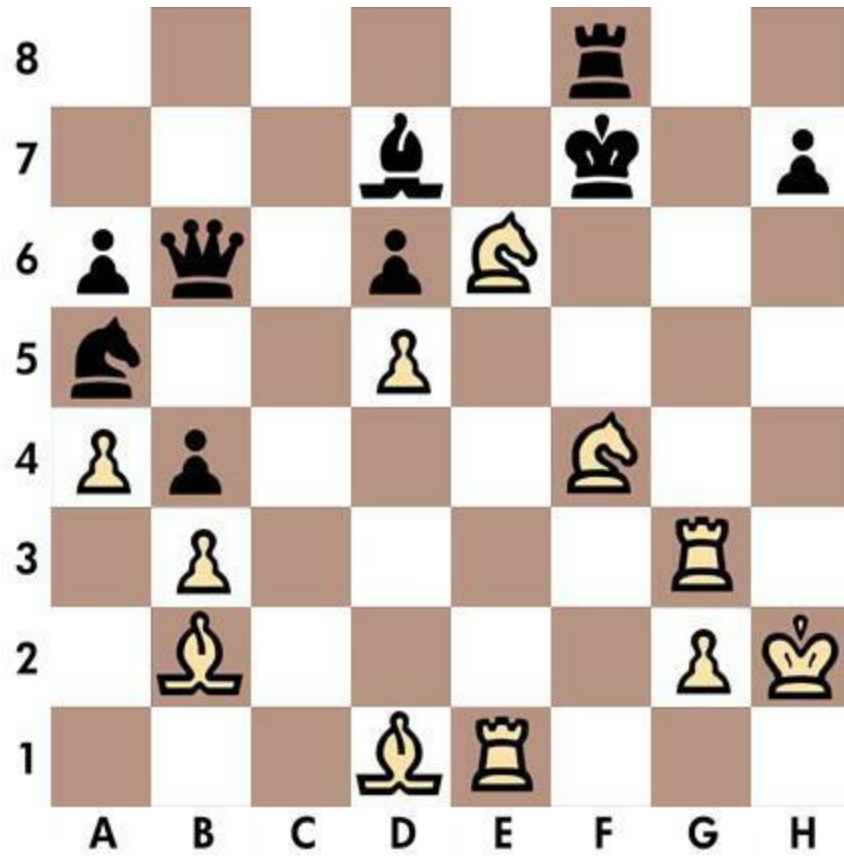


Solution n.66



1. Rg7 Kh6 2. Rg6 Kh7 3. Bg8

Quiz n.67 - White to move

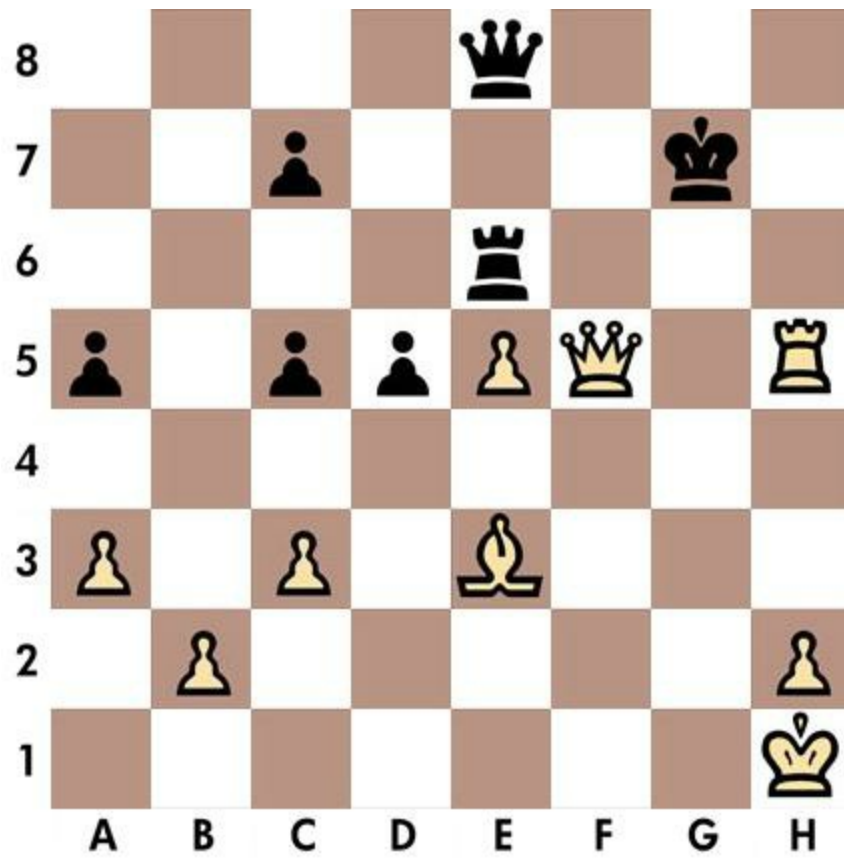


Solution n.67



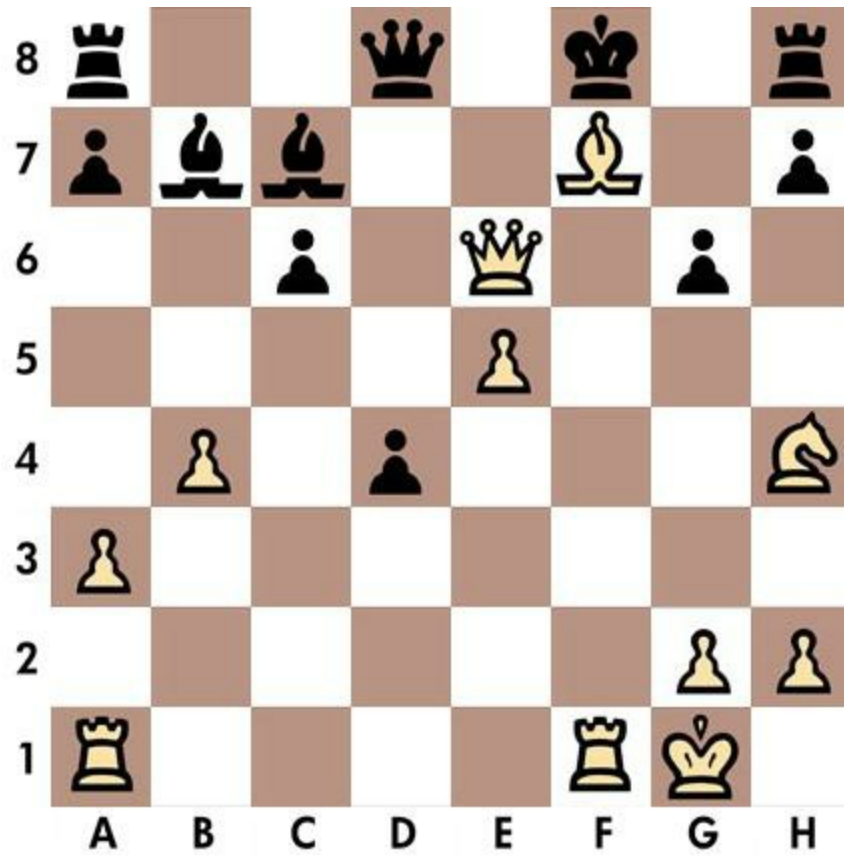
1. Ng5 Kg8 2. Nf7 Kxf7 3. Rg7

Solution n.68

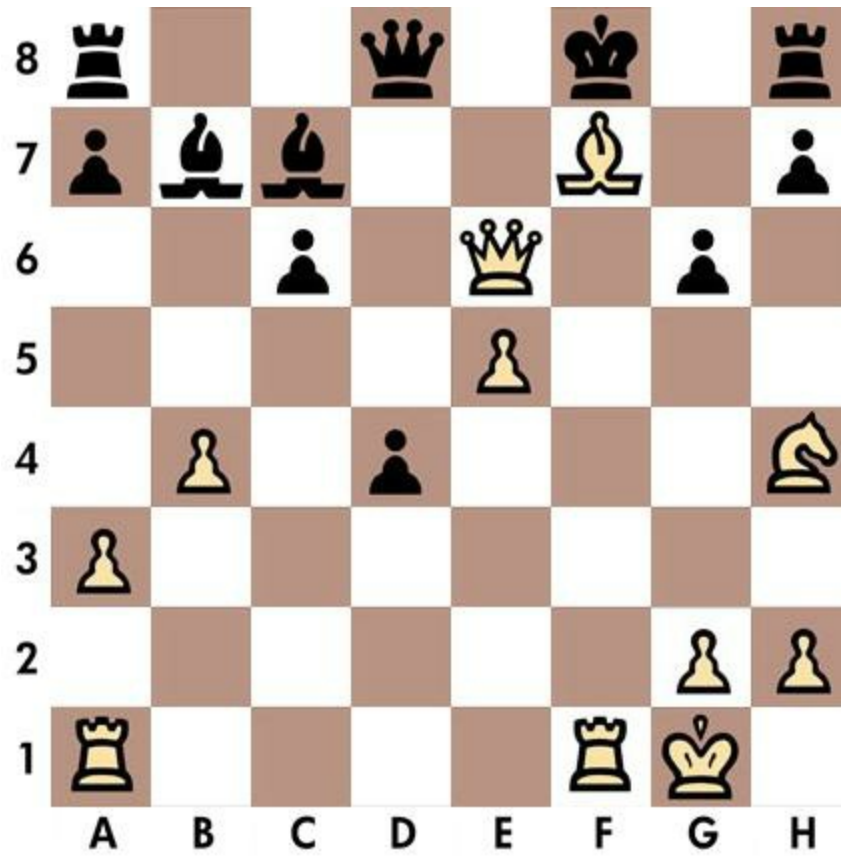


1. Qh7 Kf8 2. Rf5 Rf6 3. Bh6

Quiz n.69 - White to move



Solution n.69



1. Bxg6 Kg7 2. Nf5 Kf8 3. Qf7

Quiz n.70 - White to move



Solution n.70



1. Bxc5 Ka5 2. Rg3 Nc6 3. Ra3

Chapter 8

Quizzes 71-80

You cannot play at chess if you are kind-hearted.

French proverb

Solution n.71



1. Qe8 Qg8 2. Nf7 Kh7 3. Qxg8

Quiz n.72 - Black to move

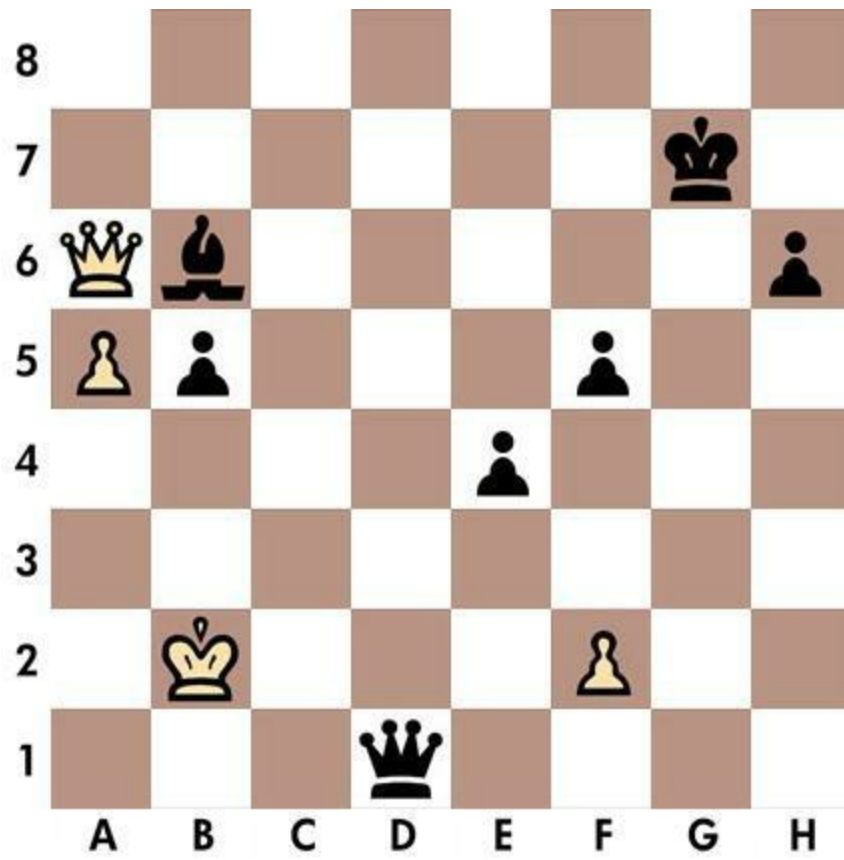


Solution n.72

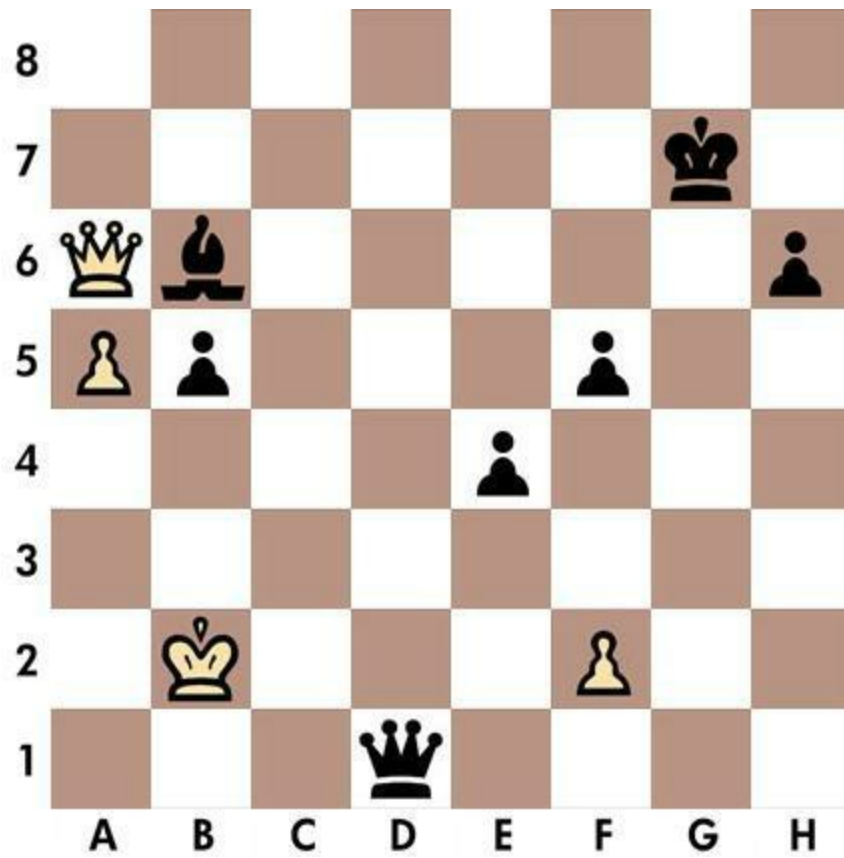


1... Rxd2 2. Nxd2 Nf4 3. Nxa6 Qxd2

Quiz n.73 - Black to move

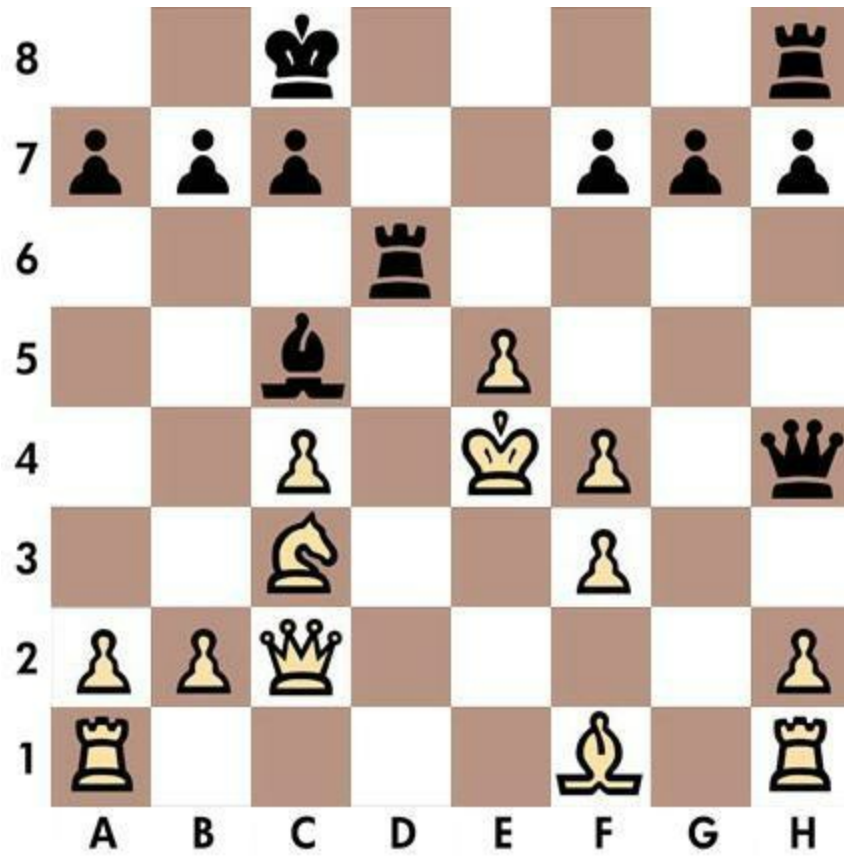


Solution n.73

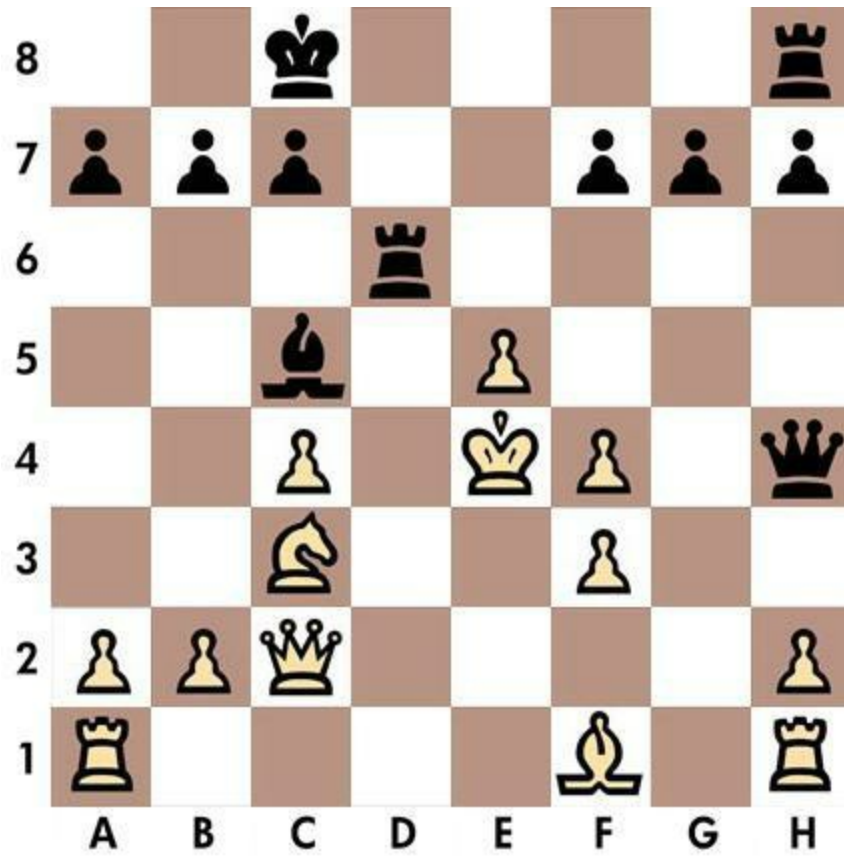


1... Bd4 2. Ka2 Qa1 3. Kb3 Qb2

Quiz n.74 - Black to move

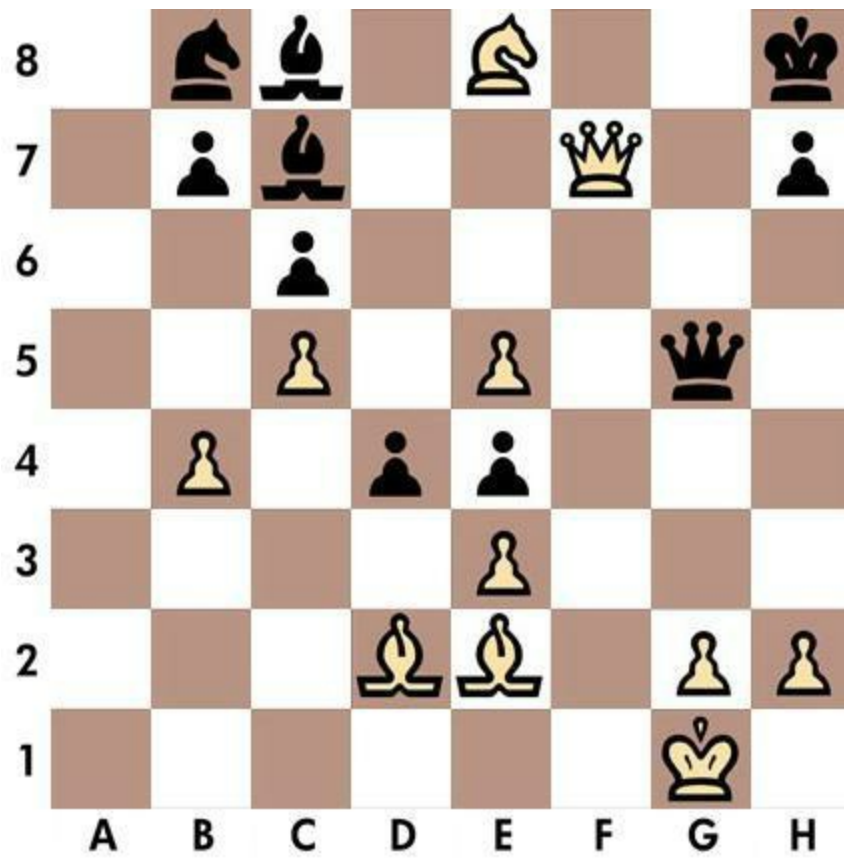


Solution n.74

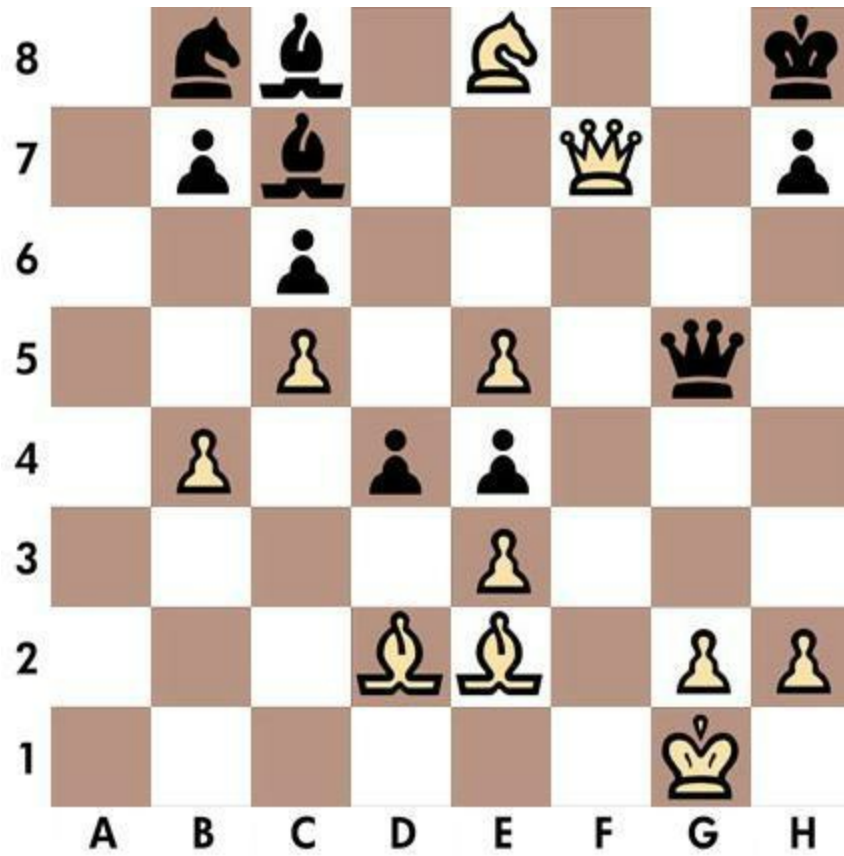


1... f5 2. Kxf5 Rf8 3. Ke4 Rxf4

Quiz n.75 - White to move

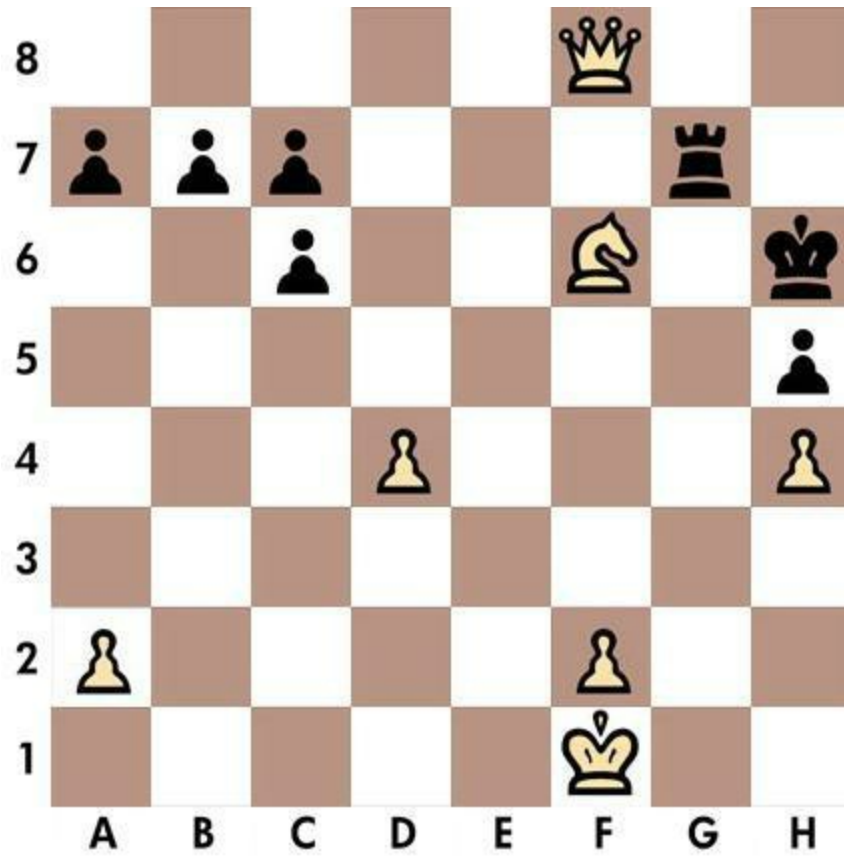


Solution n.75

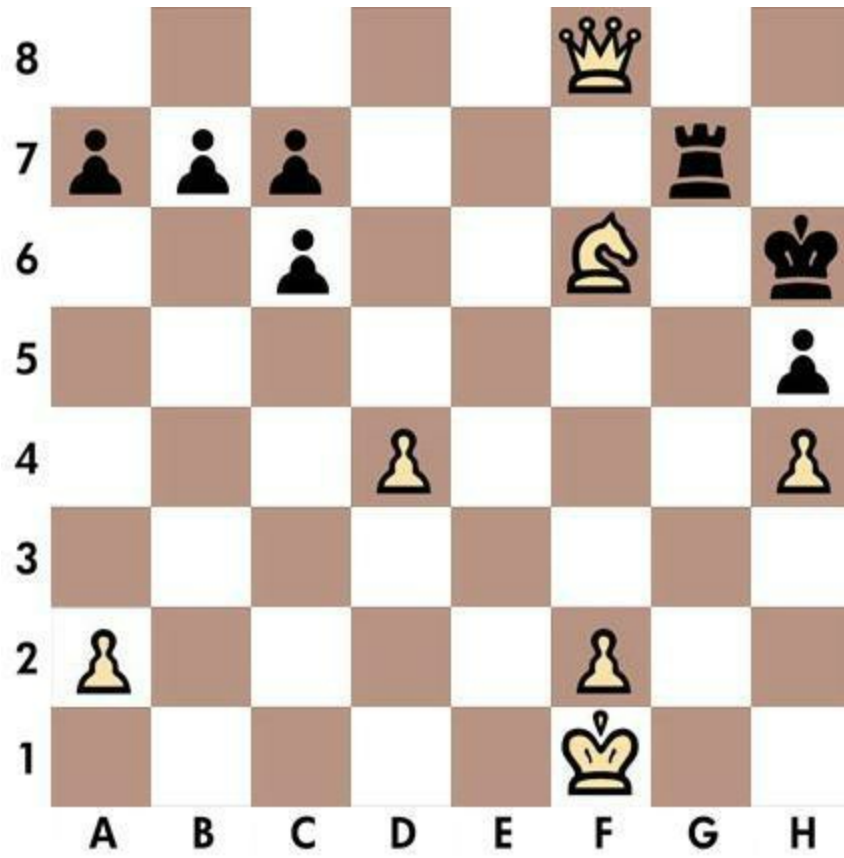


1. Qf8 Qg8 2. Qf6 Qg7 3. Qxg7

Quiz n.76 - White to move



Solution n.76



1. Ne8 Kg6 2. Qf6 Kh7 3. Qxg7

Quiz n.77 - Black to move



Solution n.77



1... Bxc2 2. Ke3 Ng4 3. Bxg4 Rd3

Solution n.78



1. Rg7 Be7 2. Rh7 Nxb7 3. Qg7

Solution n.79



1. Qxe6 Kxh5 2. Bd1 Rg4 3. hxg4

Quiz n.80 - Black to move



Solution n.80



1... f6 2. Kh4 Bf2 3. g3 Bxg3

Chapter 9

Quizzes 81-90

Once there is the slightest suggestion of combinational possibilities on the board, look for unusual moves. Apart from making your play creative and interesting it will help you to get better results.

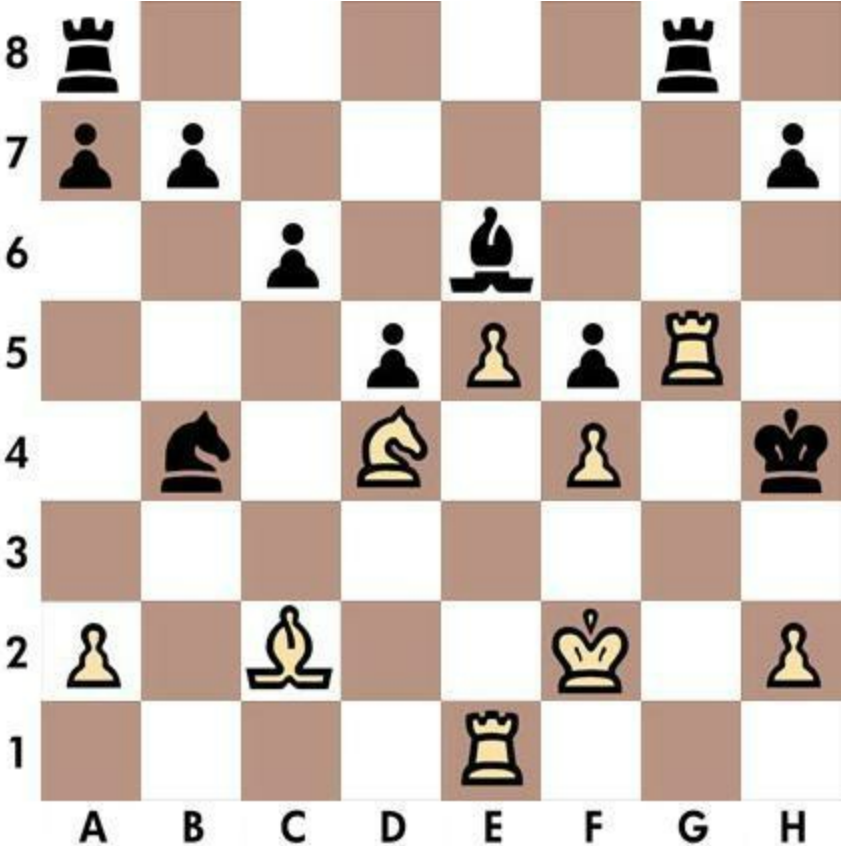
Kotov

Solution n.81



1. g4 Kg5 2. Qf4 Kh4 3. Rxf6

Quiz n.82 - White to move



Solution n.82



1. Nf3 Kh3 2. Rh5 Kg4 3. Rh4

Solution n.83



1. Rxd7 Kxd7 2. Qh7 Kf6 3. Rh6

Quiz n.84 - White to move

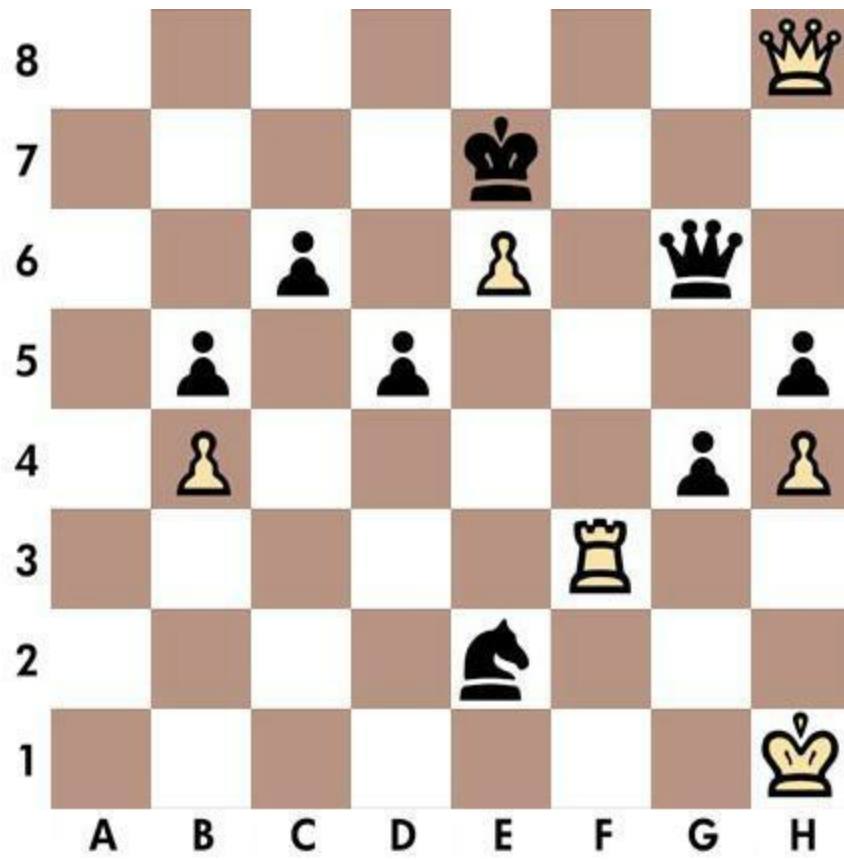


Solution n.84



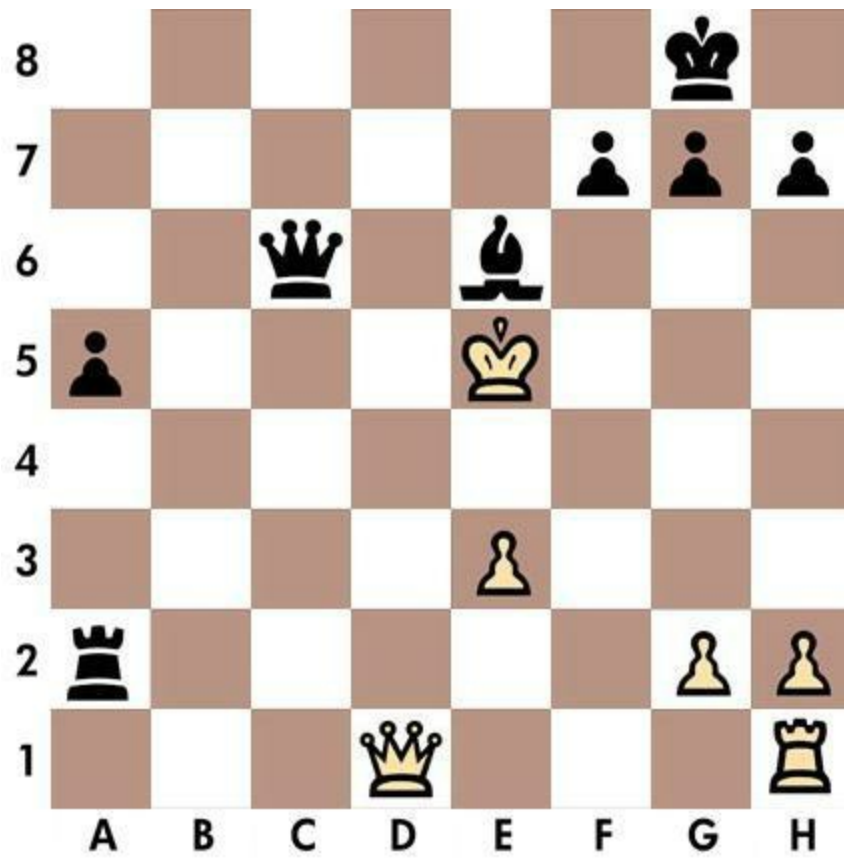
1. Reg6 Qd5 2. Rg5 Rf7 3. Rh8

Solution n.85

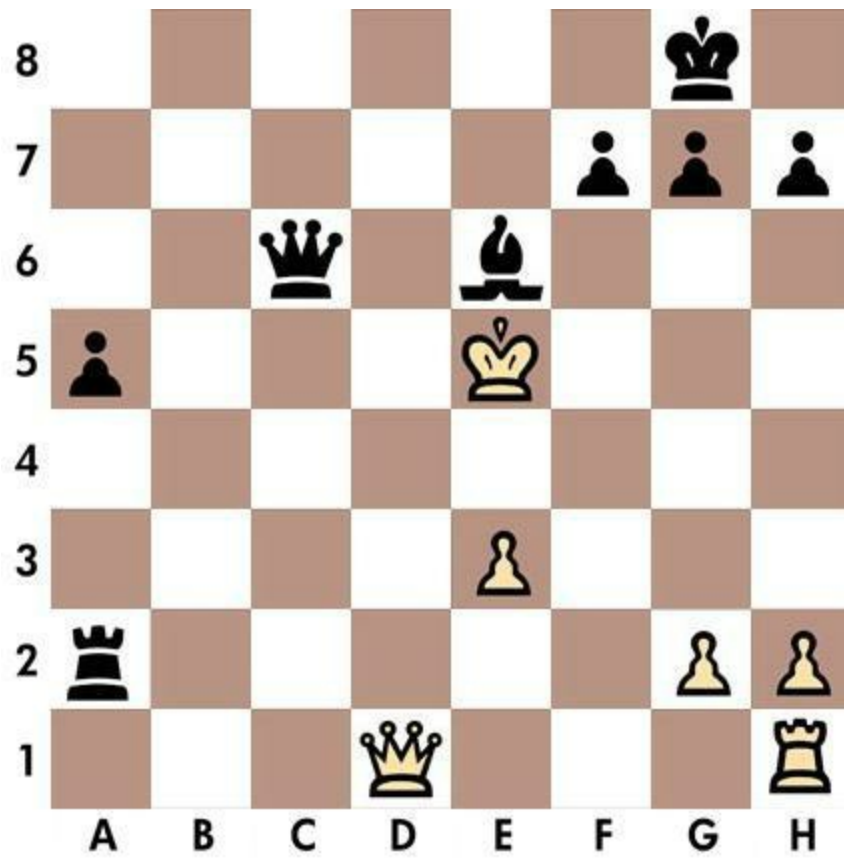


1... Qb1 2. Rf1 Qxf1 3. Kh2 g3

Quiz n.86 - Black to move

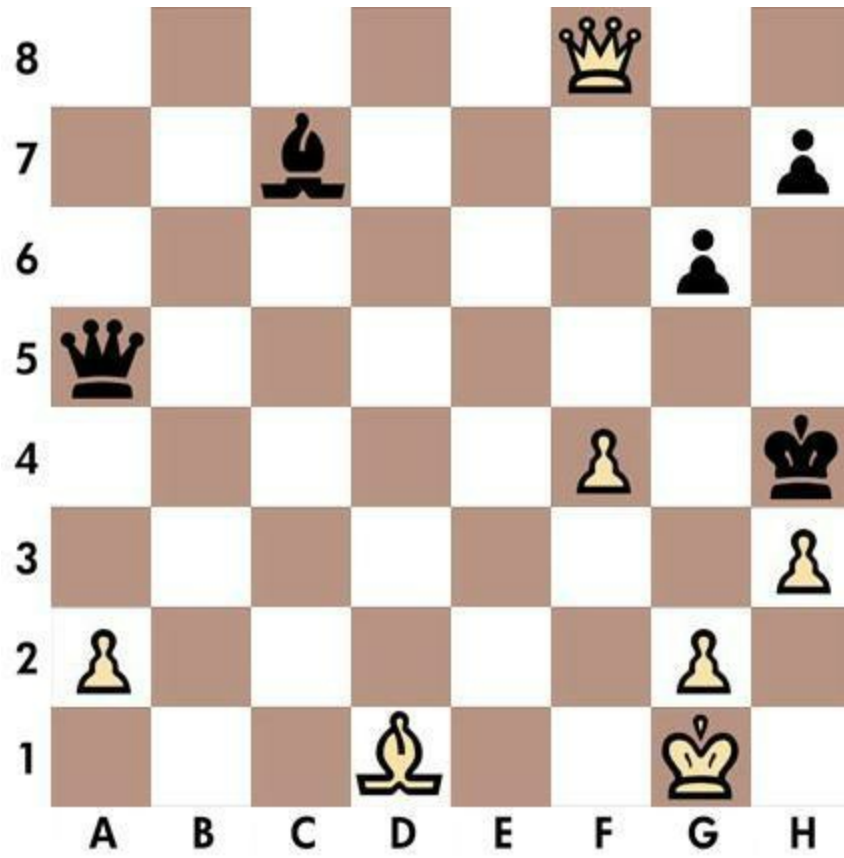


Solution n.86

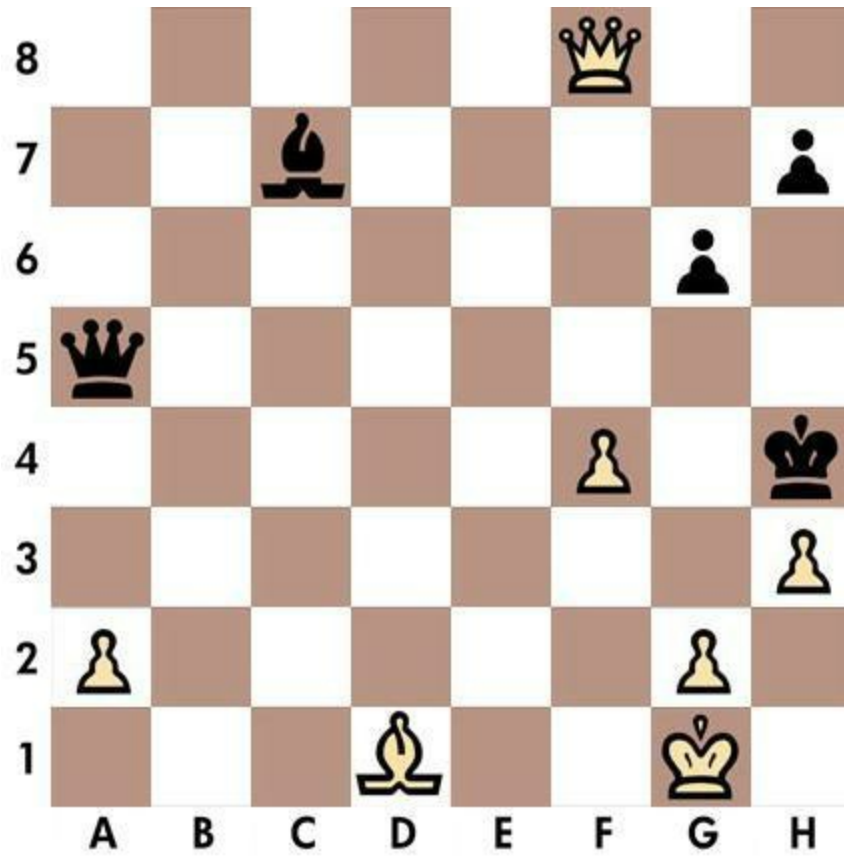


1... f6 2. Kf4 g5 3. Kg3 Rxd2

Quiz n.87 - White to move



Solution n.87



1. Kh2 Qg5 2. Qh6 Qxh6 3. g3

Quiz n.88 - White to move



Solution n.88



1. Re8 Kc7 2. Bd6 Kb6 3. Rb8

Solution n.89



1. Bg5 f6 2. Bxf6 Kf7 3. e6

Quiz n.90 - White to move



Solution n.90



1. Rc7 Qxd6 2. Rxd6 Ke8 3. Rxe7

Chapter 10

Quizzes 91-100

The most powerful weapon in chess is to have the next move.

Bronstein

Solution n.91



1. Bg6 Kxg6 2. Qg5 Kf7 3. Qxg7

Solution n.92

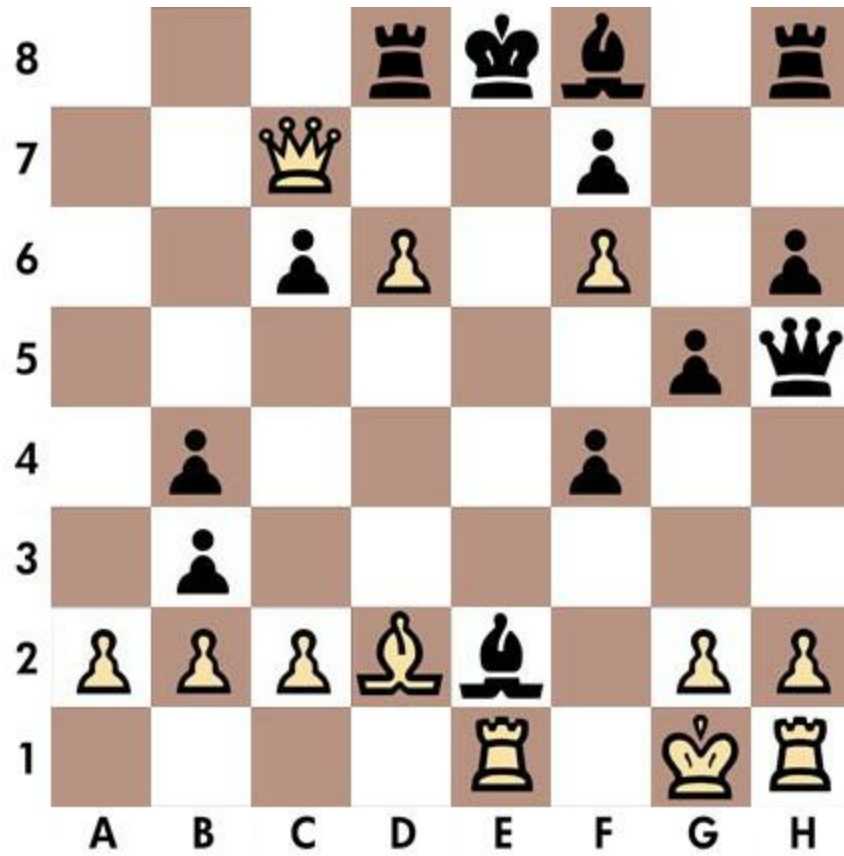


1. Bxg7 Kg8 2. f7 Qxf7 3. exf7

Quiz n.93 - White to move



Solution n.93



1. Qxc6 Rd7 2. Qc8 Rd8 3. d7

Quiz n.94 - White to move



Solution n.94



1. Re1 Kxd4 2. c3 Kd3 3. Rd5

Quiz n.95 - White to move

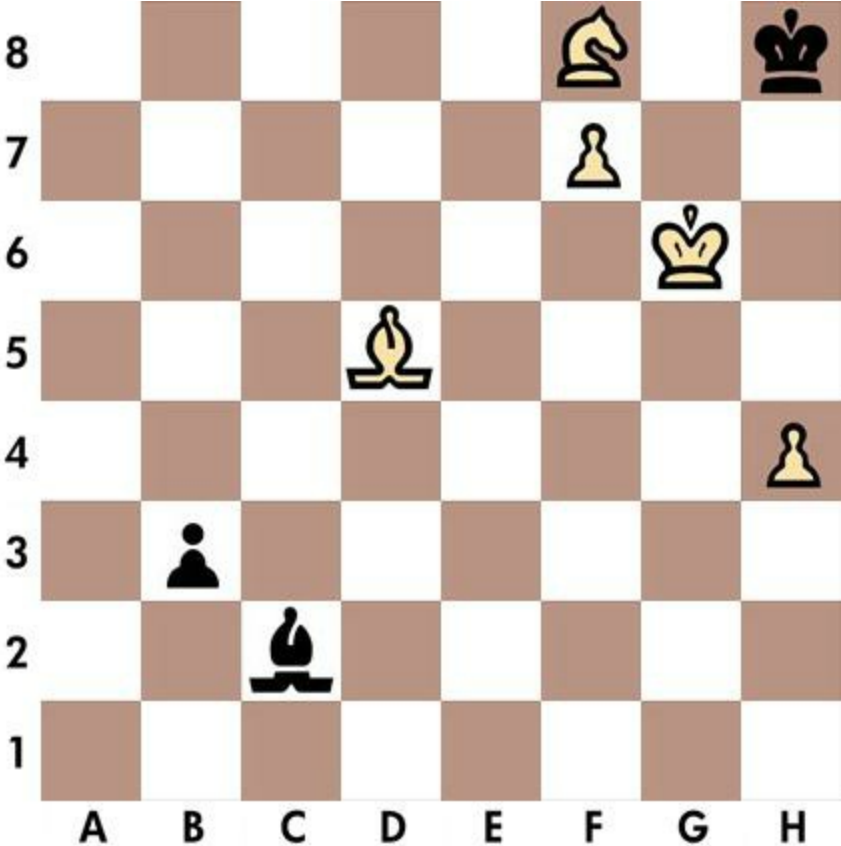


Solution n.95

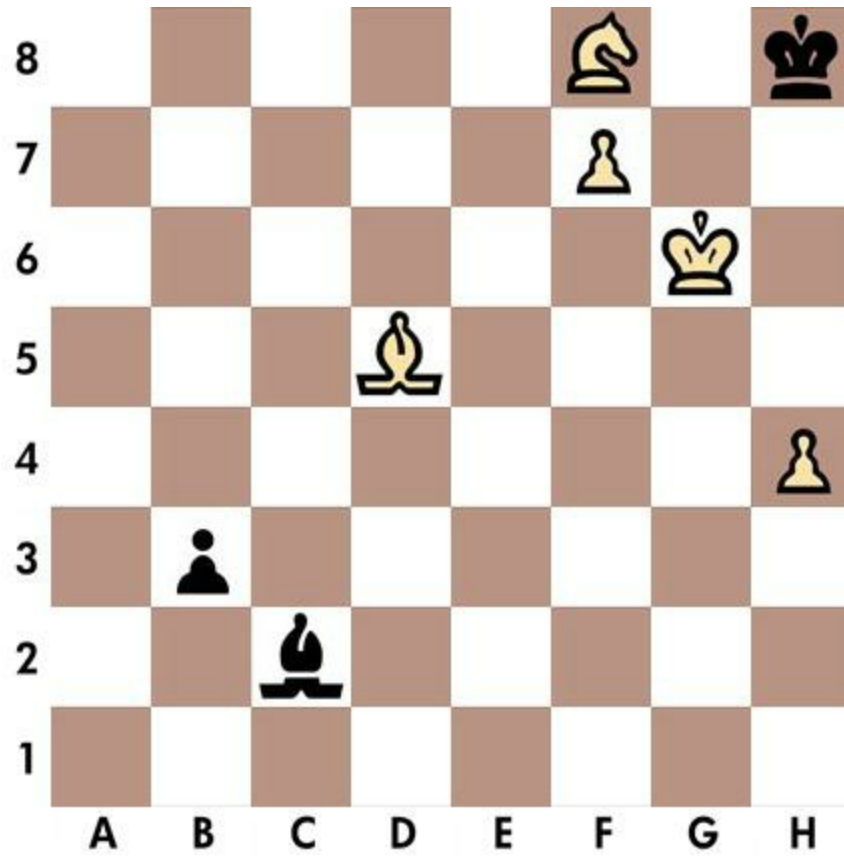


1. Ng7 Qxg7 2. Rd6 Nxd6 3. Rxd6

Quiz n.96 - White to move

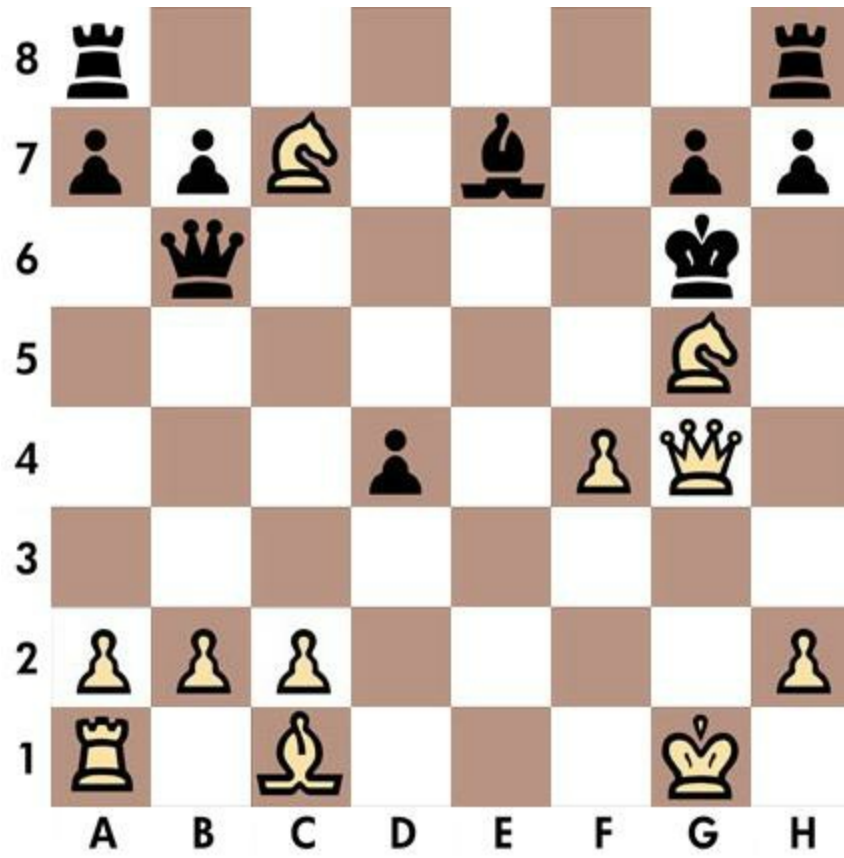


Solution n.96

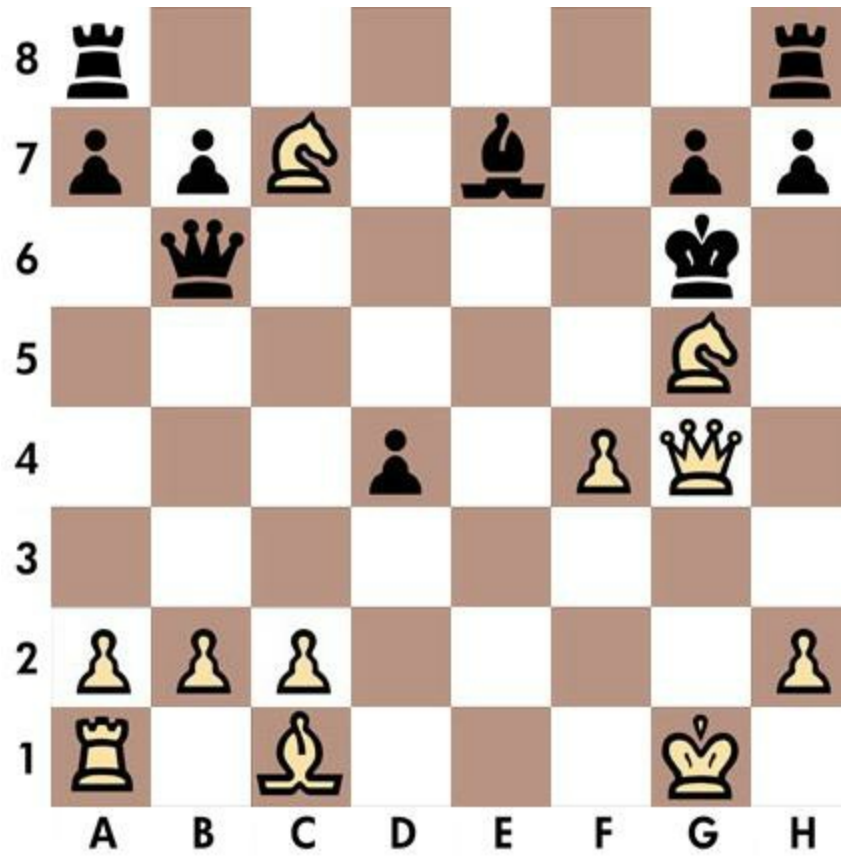


1. Kh6 b2 2. Ng6 Bxg6 3. f8=Q

Quiz n.97 - White to move



Solution n.97



1. Nge6 Kh6 2. f5 g5 3. Qh3

Quiz n.98 - Black to move

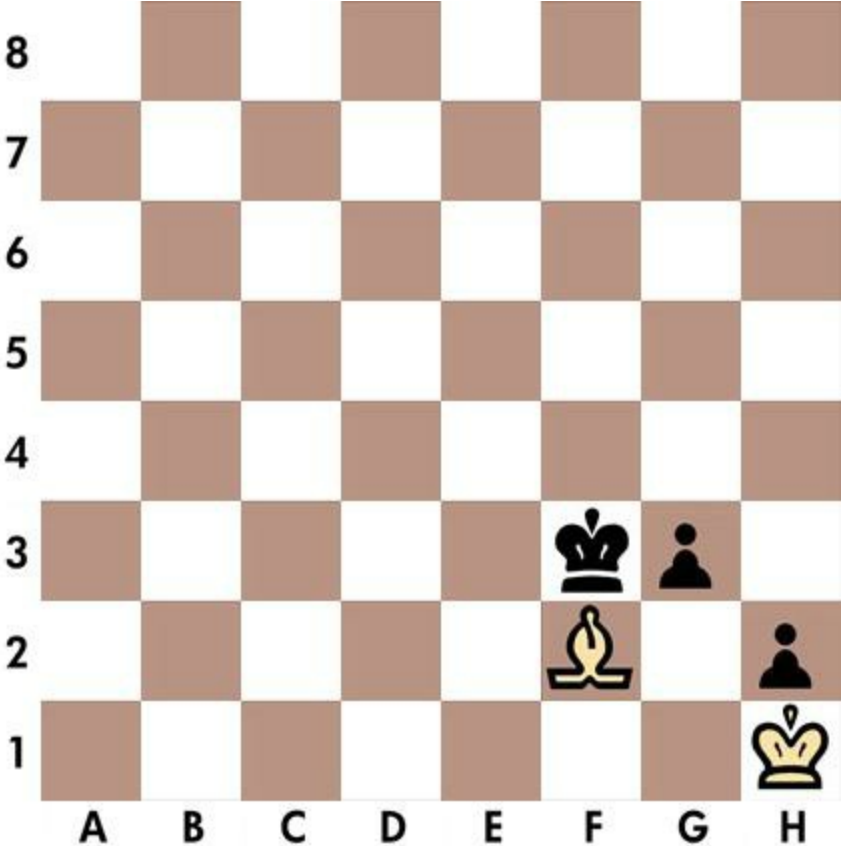


Solution n.98

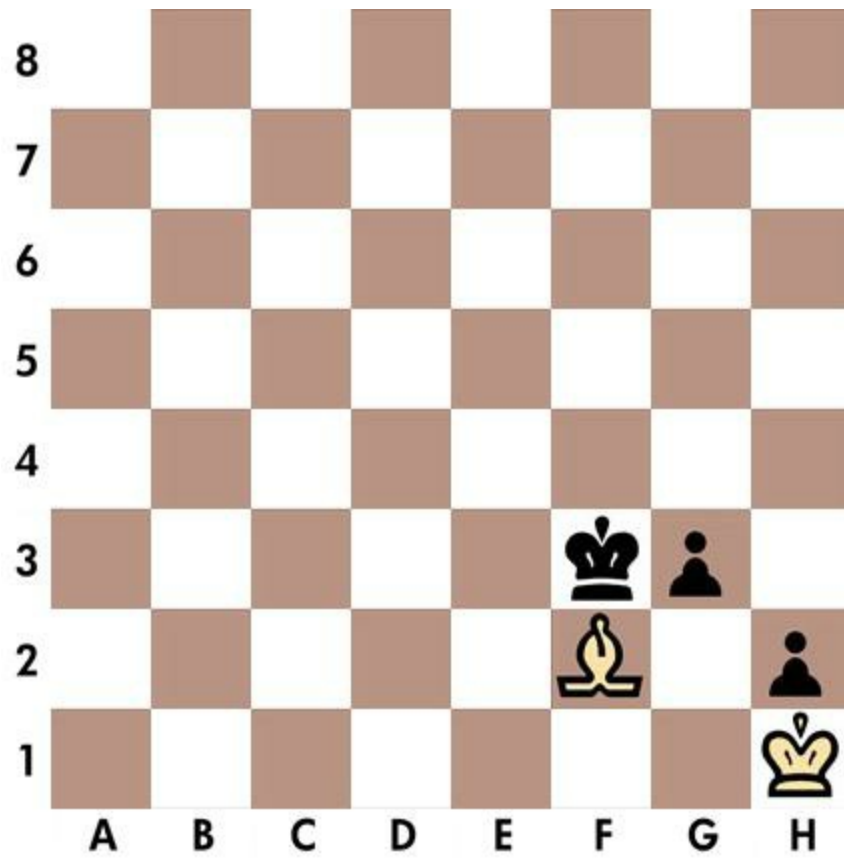


1... Ng3 2. Kg1 Ne2 3. Kh1 Rg1

Quiz n.99 - Black to move



Solution n.99

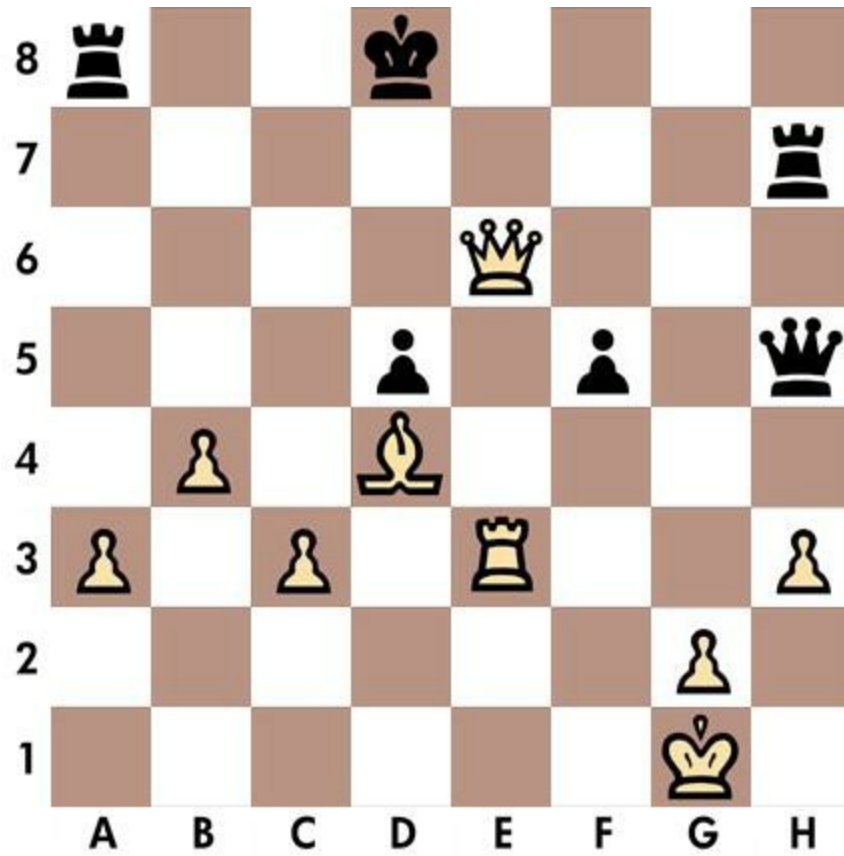


1... gxf2 2. Kxh2 f1=R 3. Kh3 Rh1

Quiz n.100 - White to move



Solution n.100



1. Bb6 Rc7 2. Qd6 Kc8 3. Qxc7

Epilogue

When the chess game is over, the pawn and the king go back to the same box.

Irish proverb

www.chesstrainer.org