

ChessTrainer

100 mates in 2

vol.1



Prologue

Chess is 99% tactics.

Teichmann

www.chesstrainer.org

Chapter 1

Quizzes 1-10

It is not possible to become a great player without having learned how to analyse deeply and accurately

Mark Dvoretsky

Quiz n.1 - White to move



Solution n.1



1. Rf8 Bc8 2. dxc8=Q

Quiz n.2 - White to move

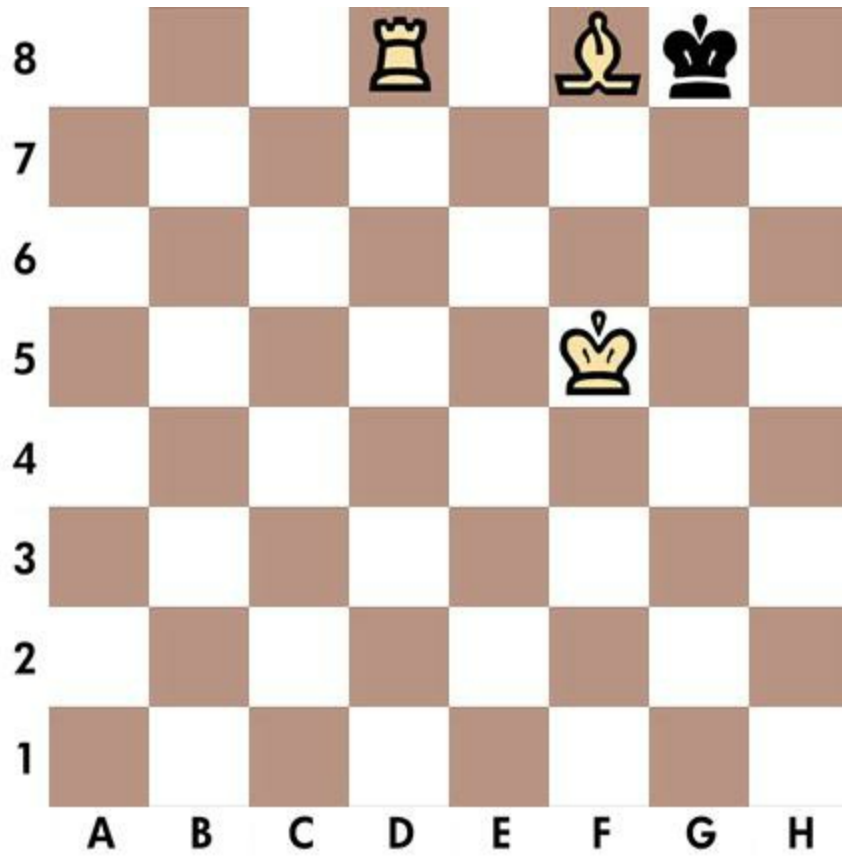


Solution n.2

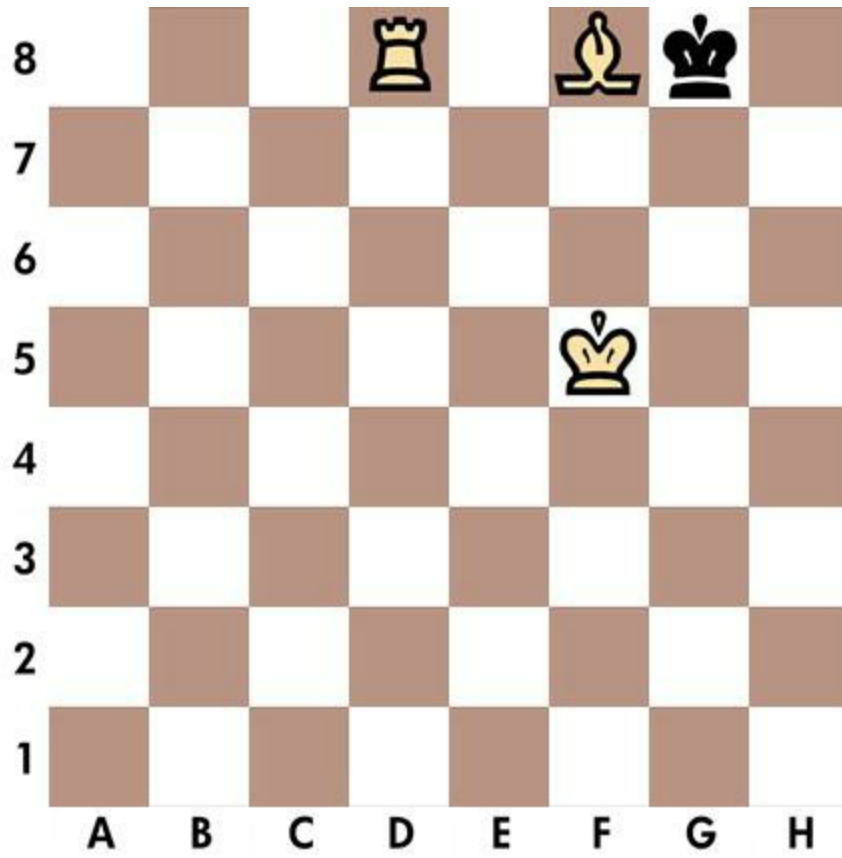


1. Qf6 Nxf6 2. Be7

Quiz n.3 - White to move



Solution n.3



1. Kg6 Kh8 2. Bb4

Quiz n.4 - White to move



Solution n.4



1. Qxc7 Ke8 2. Qf7

Quiz n.5 - White to move



Solution n.5



1. Qf7 Kh8 2. Bf6

Quiz n.6 - White to move



Solution n.6



1. Qxf7 Kh8 2. Bxf6

Quiz n.7 - Black to move



Solution n.7



1... Bd5 2. Kd6 Ne8

Quiz n.8 - Black to move



Solution n.8



1... Nf3 2. Kh5 Bg4

Quiz n.9 - White to move

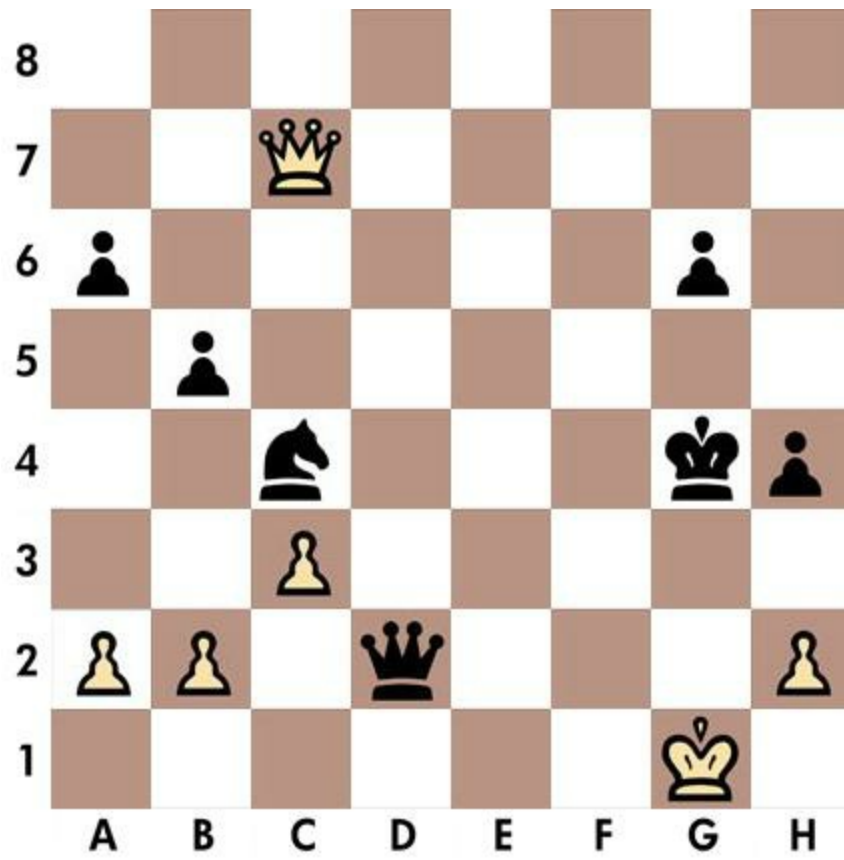


Solution n.9



1. Qxe6 Kf4 2. Nh3

Solution n.10



1... Qe1 2. Kg2 Ne3

Chapter 2

Quizzes 11-20

The beauty of a move lies not in its appearance but in the thought behind it.

Aaron Nimzowitsch

Quiz n.11 - White to move

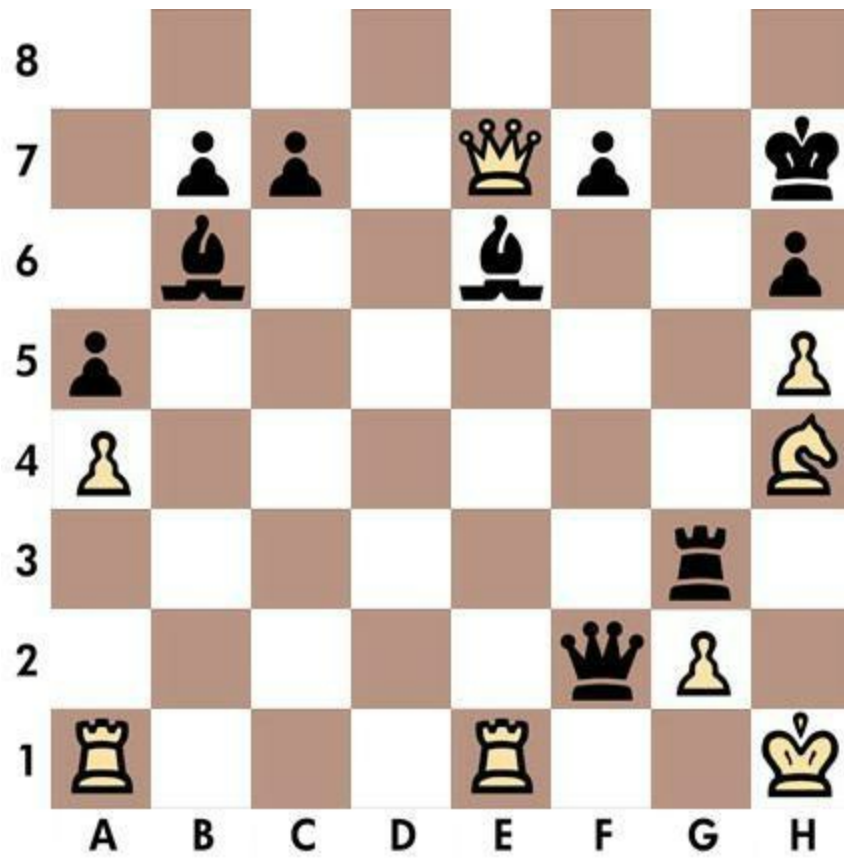


Solution n.11

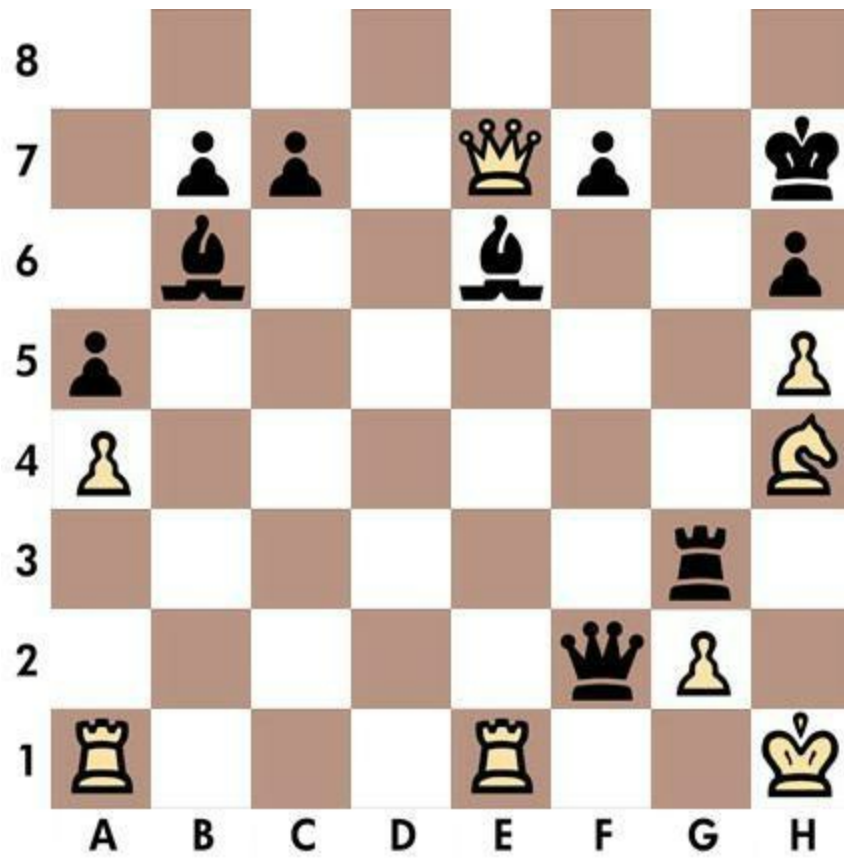


1. g3 Rxc3 2. hxg3

Quiz n.12 - Black to move

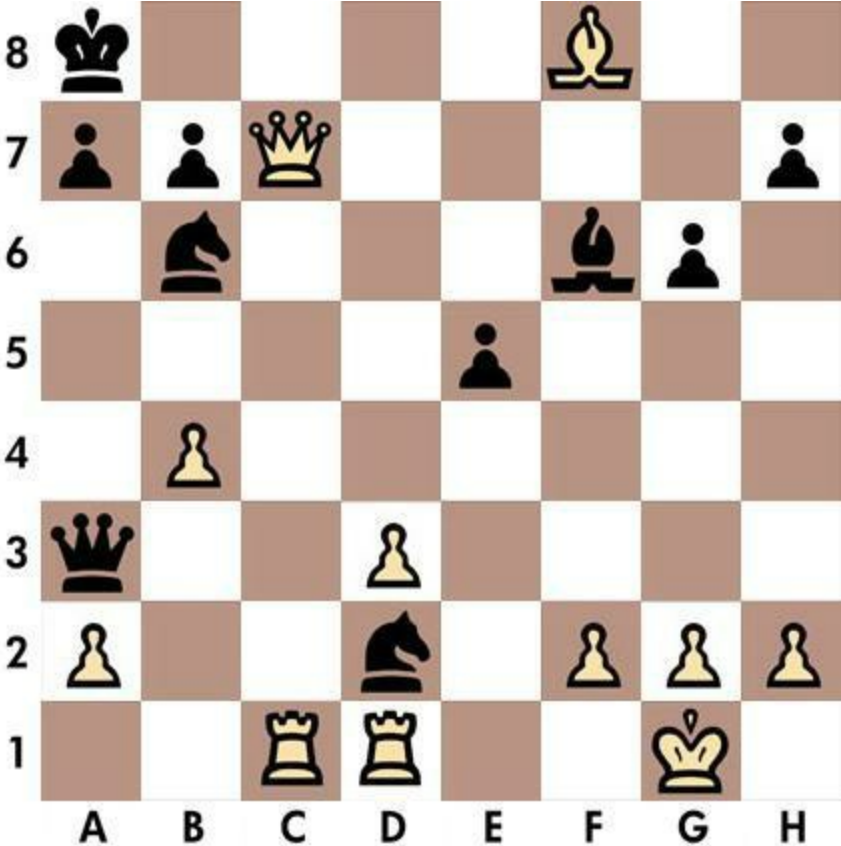


Solution n.12



1... Qxg2 2. Nxg2 Rh3

Quiz n.13 - White to move



Solution n.13

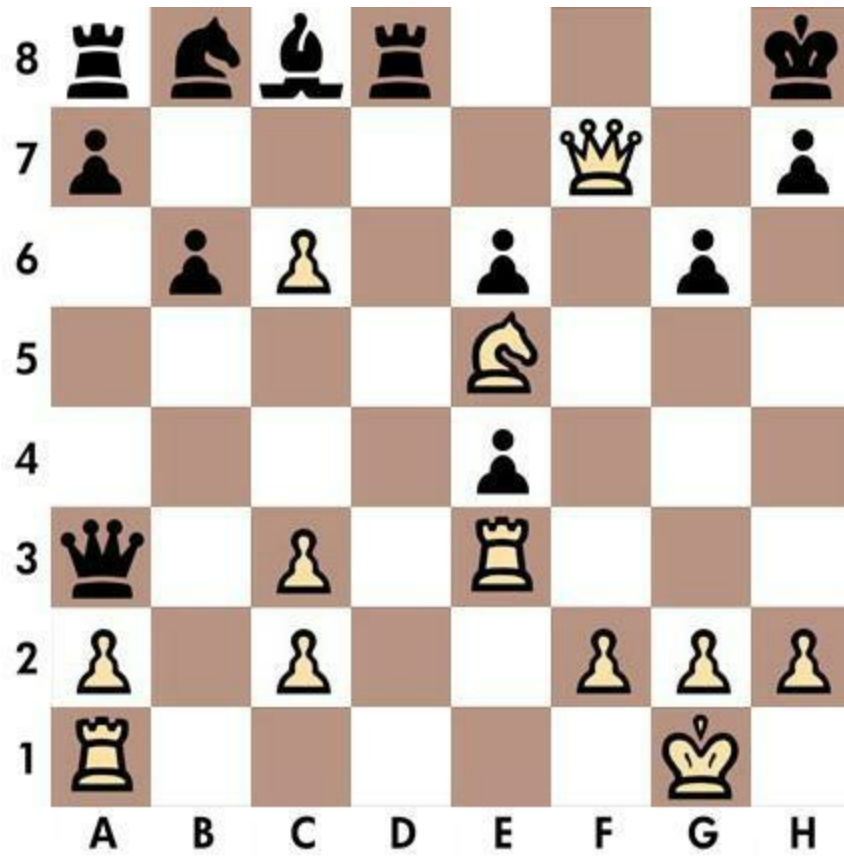


1. Qc8 Nxc8 2. Rxc8

Quiz n.14 - White to move



Solution n.14



1. Nxg6 hxg6 2. Rh3

Quiz n.15 - White to move

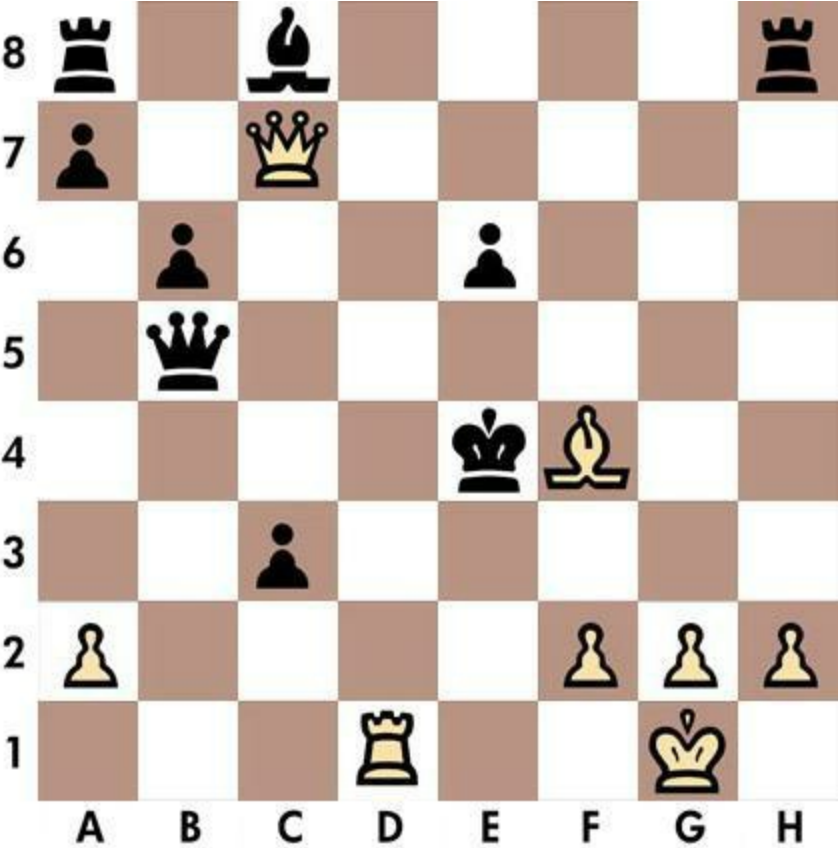


Solution n.15



1. Rh8 Nxh8 2. Qh7

Quiz n.16 - White to move



Solution n.16



1. f3 Kf5 2. Qf7

Quiz n.17 - Black to move



Solution n.17



1... Qf3 2. Kh4 g5

Quiz n.18 - Black to move



Solution n.18



1... Nf5 2. Kh5 g6

Quiz n.19 - Black to move

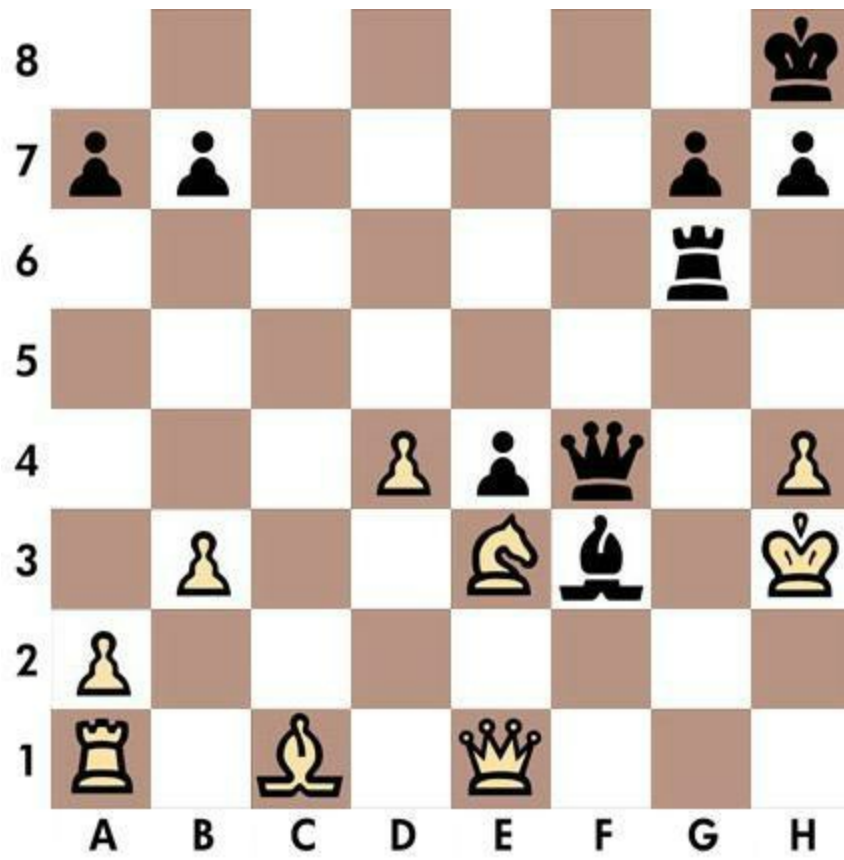


Solution n.19

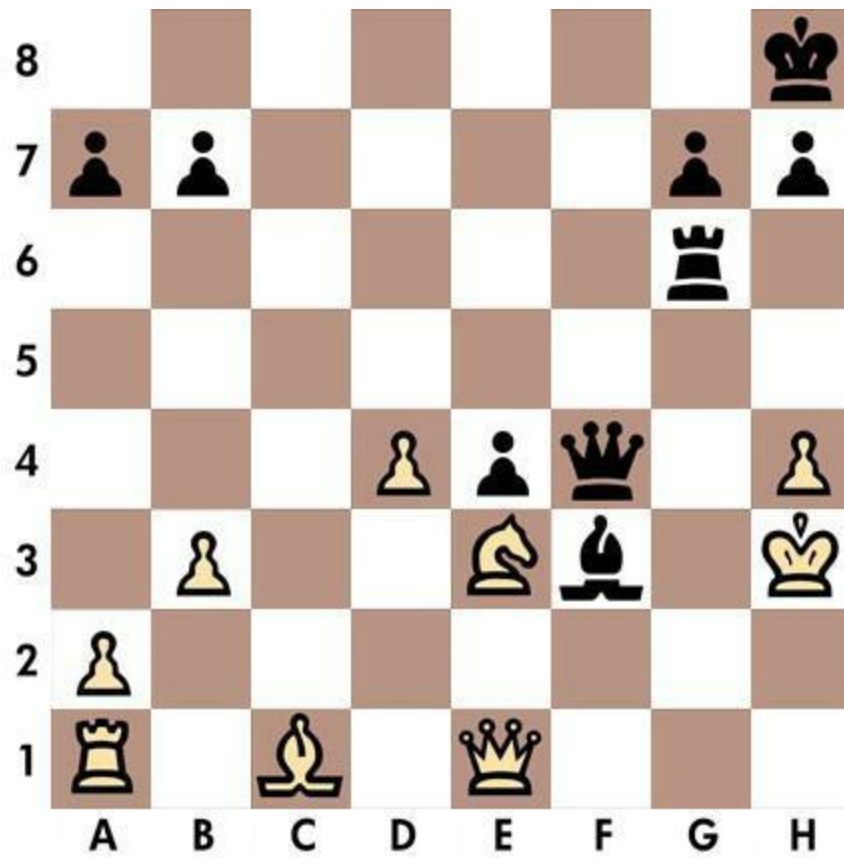


1... g6 2. Kg5 Be3

Quiz n.20 - Black to move



Solution n.20



1... Rg2 2. Nxf2 Bg4

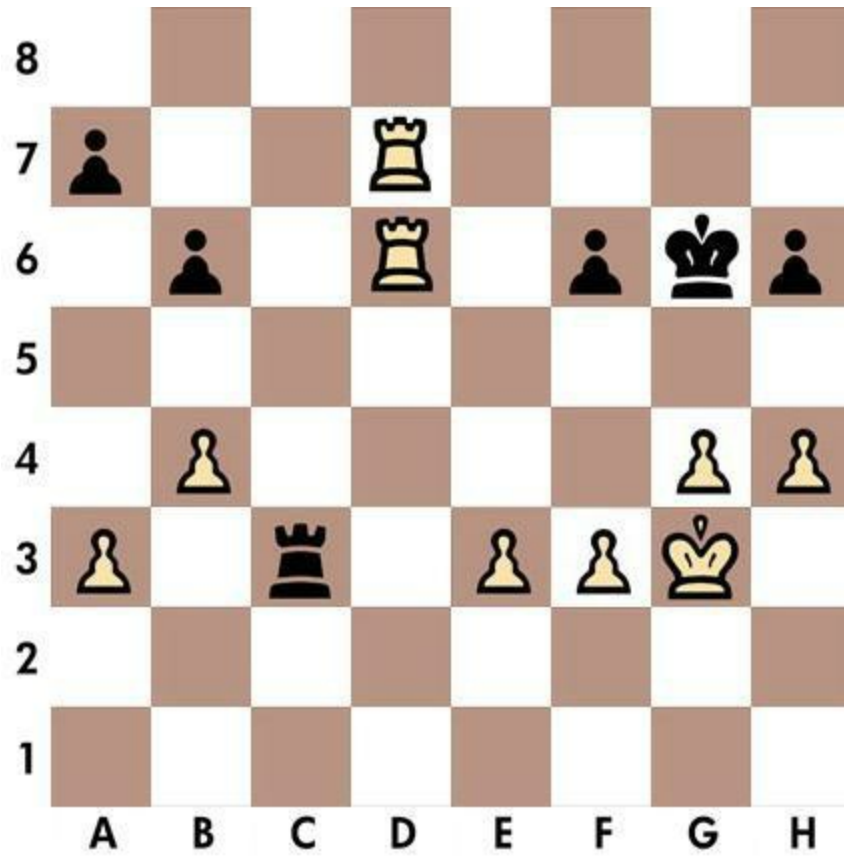
Chapter 3

Quizzes 21-30

Chess is like a language, the top players are very fluent at it. Talent can be developed scientifically but you have to find first what you are good at.

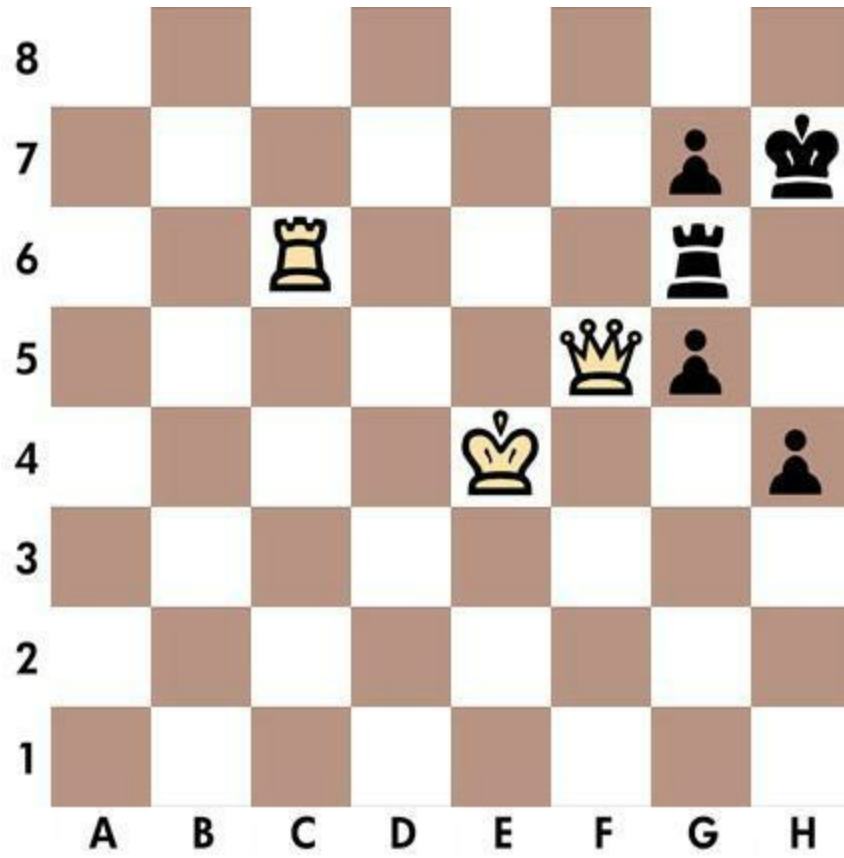
Viswanathan Anand

Solution n.21



1. h5 Kg5 2. f4

Solution n.22

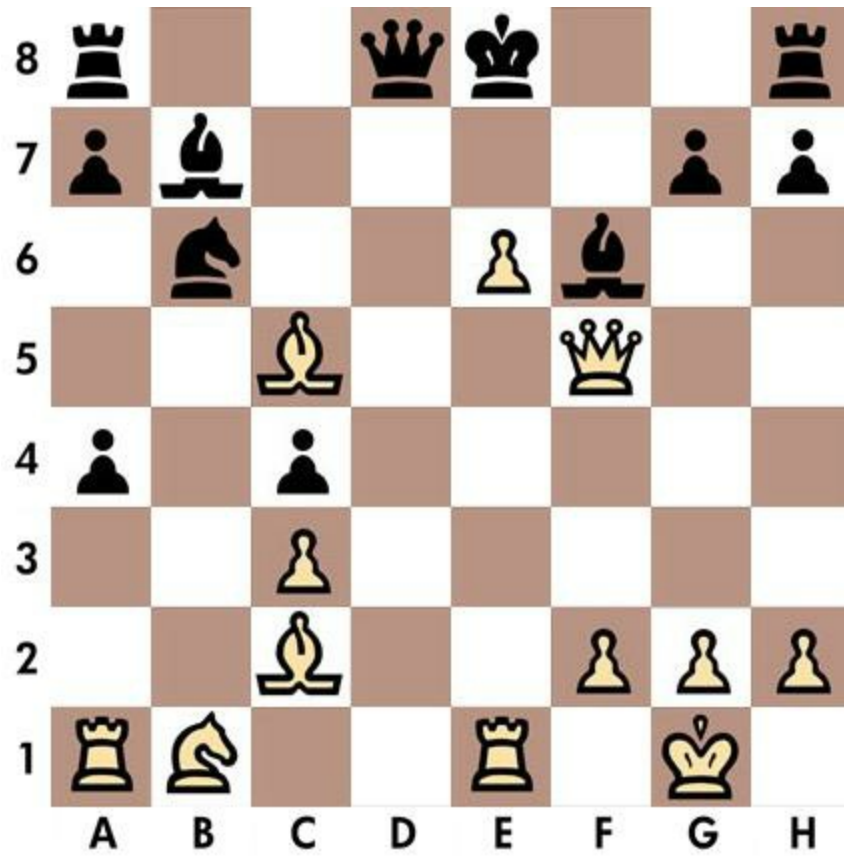


1. Qxg6 Kg8 2. Rc8

Quiz n.23 - White to move

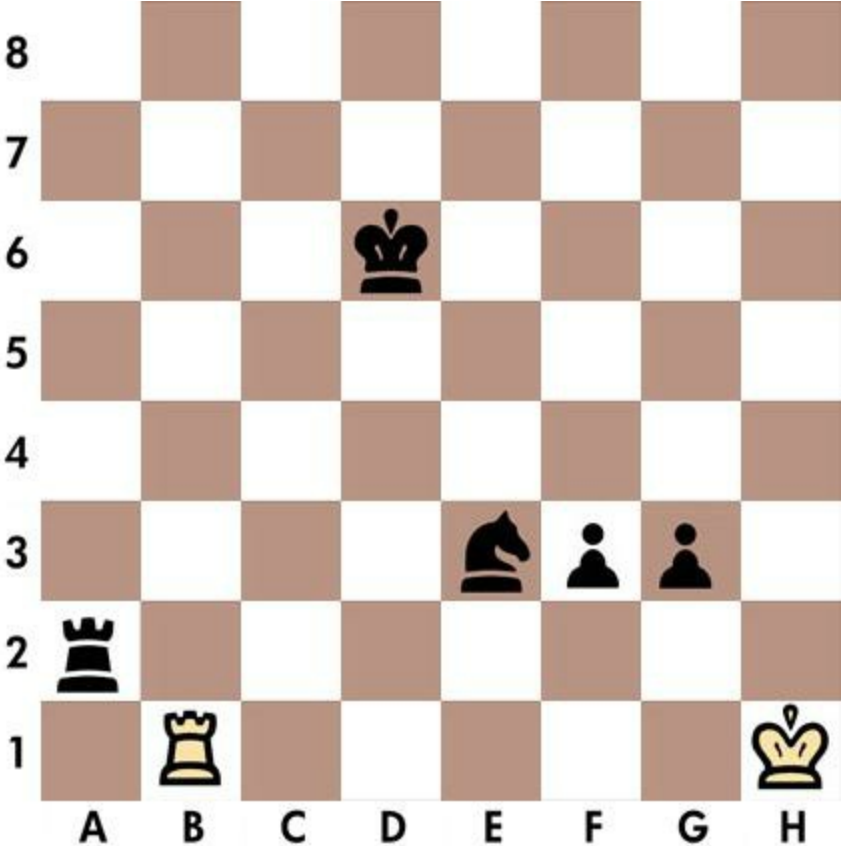


Solution n.23

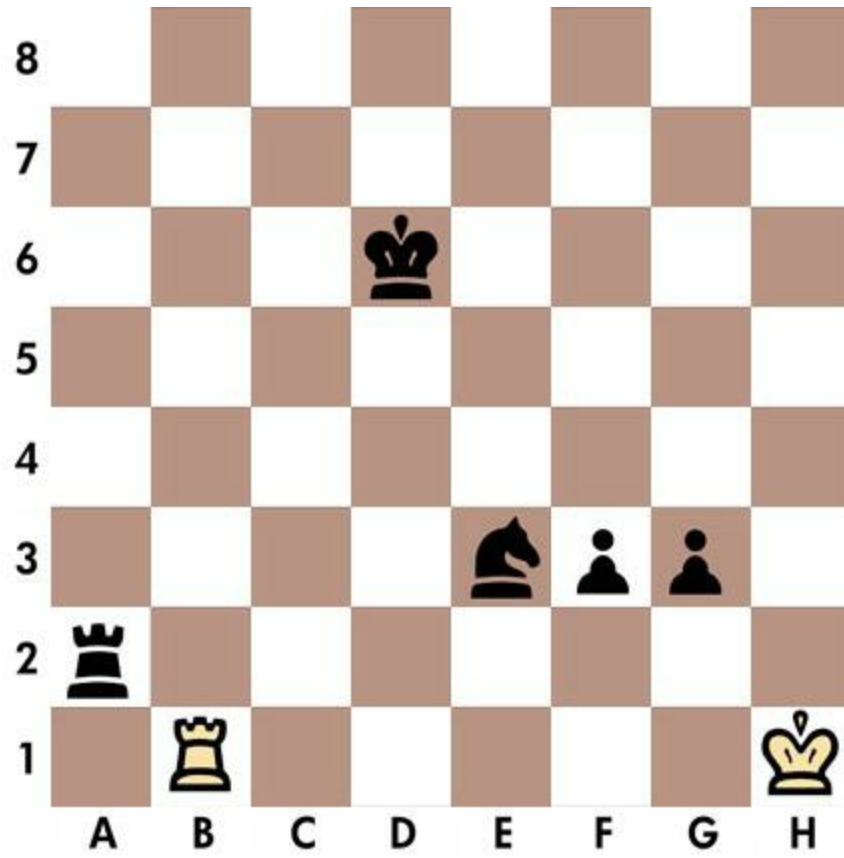


1. Qg6 hxg6 2. Bxg6

Quiz n.24 - Black to move



Solution n.24



1... Rh2 2. Kg1 f2

Quiz n.25 - White to move



Solution n.25



1. Nf5 Kh5 2. g4

Quiz n.26 - White to move



Solution n.26



1. Bf7 Kf8 2. Bc5

Quiz n.27 - White to move



Solution n.27



1. Qxc7 Ka7 2. Bc5

Quiz n.28 - White to move

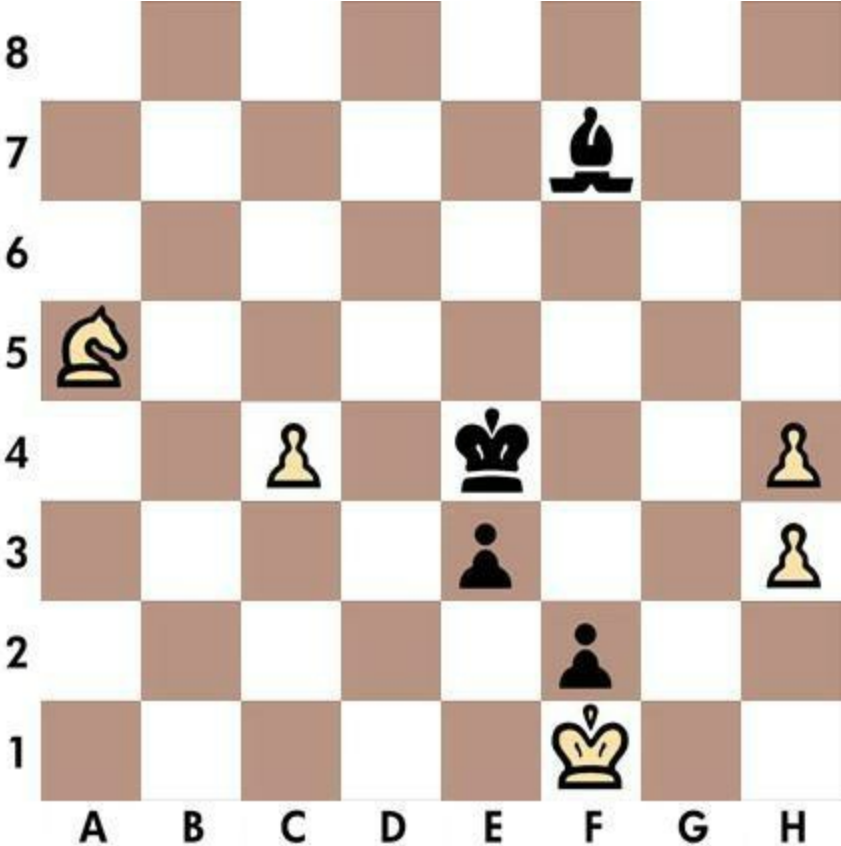


Solution n.28

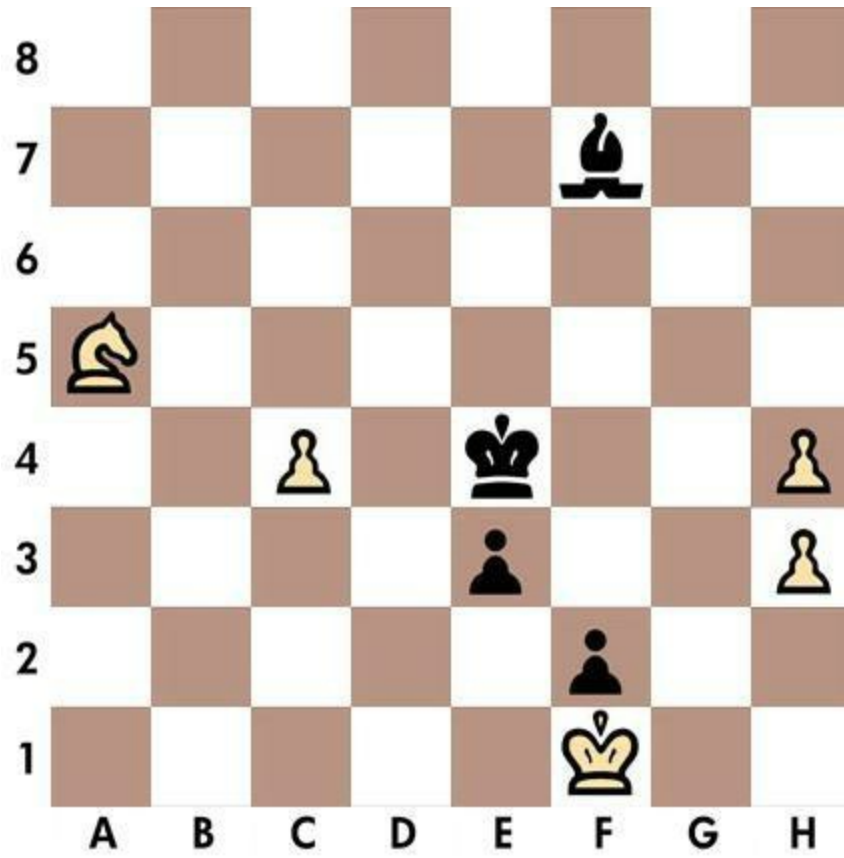


1. Qc6 bxc6 2. Ba6

Quiz n.29 - Black to move

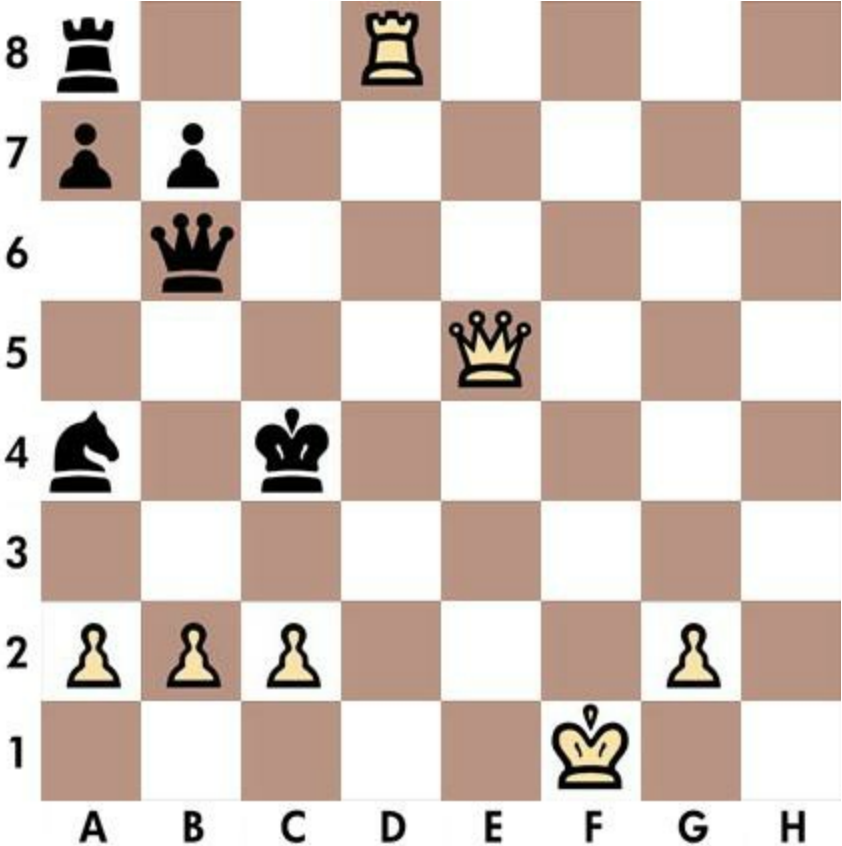


Solution n.29

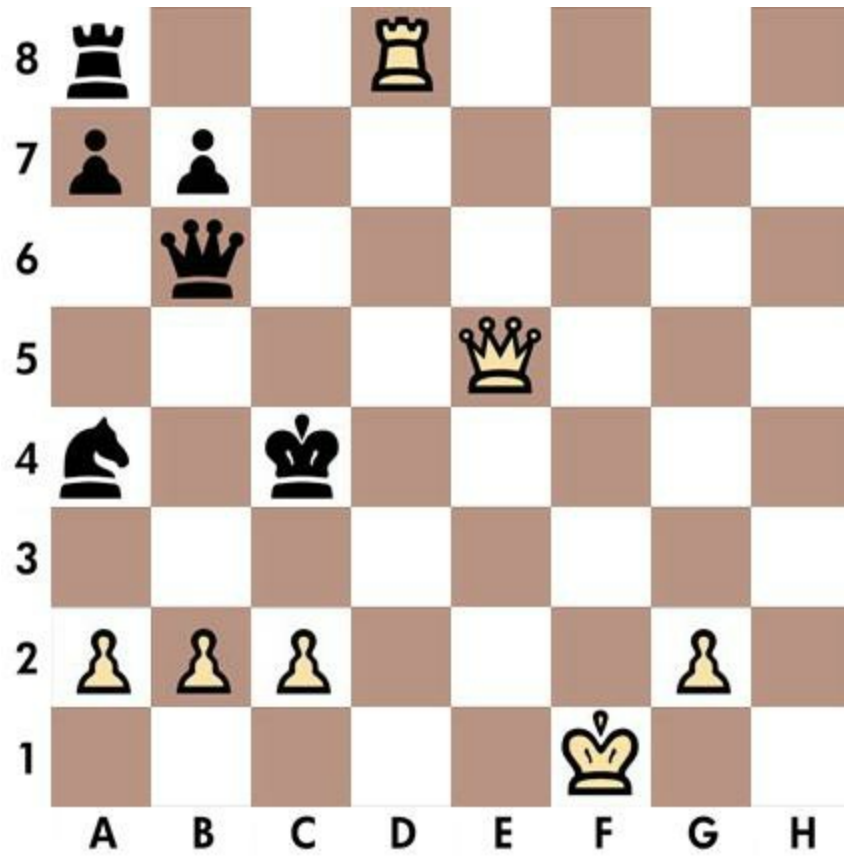


1... Kf3 2. c5 e2

Quiz n.30 - White to move



Solution n.30



1. Qd5 Kb4 2. a3

Chapter 4

Quizzes 31-40

I have always had a slight feeling of pity for man who has no knowledge of chess.

Siegbert Tarrasch

Quiz n.31 - White to move



Solution n.31



1. Ne7 Kh8 2. Qf6

Quiz n.32 - Black to move



Solution n.32



1... Qxd3 2. Nxd3 e2

Quiz n.33 - White to move



Solution n.33



1. h3 Qxh3 2. Qxh3

Quiz n.34 - White to move



Solution n.34



1. Rd4 Kxc3 2. Qd2

Quiz n.35 - White to move



Solution n.35



1. Qxe7 Kc6 2. Nd4

Quiz n.36 - White to move



Solution n.36



1. Qc8 Rd8 2. d7

Quiz n.37 - Black to move

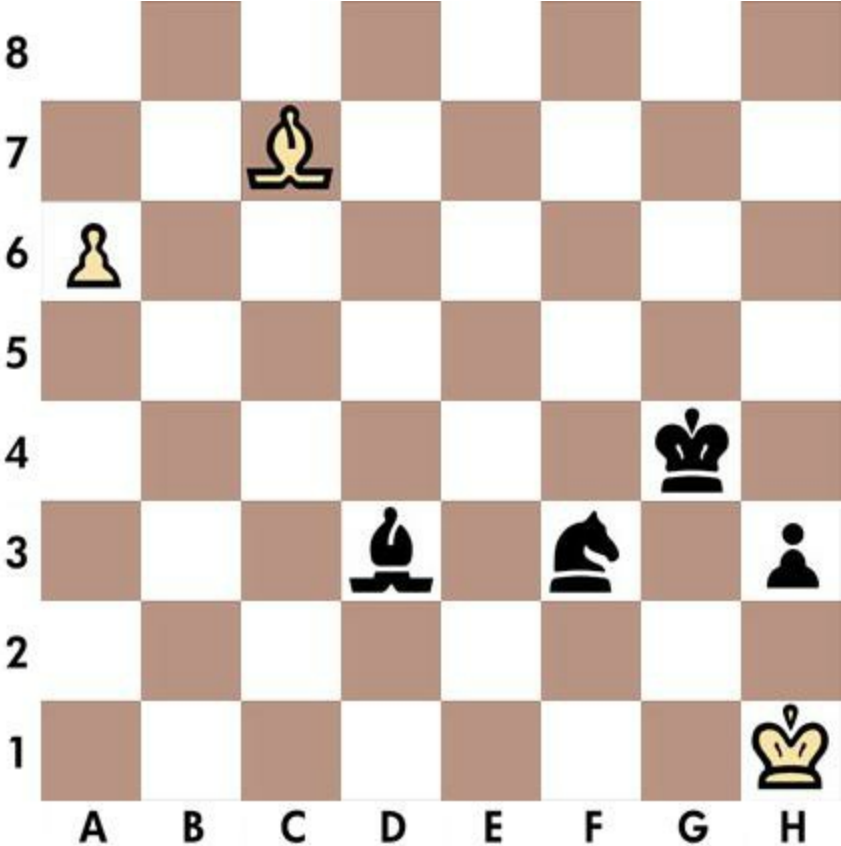


Solution n.37

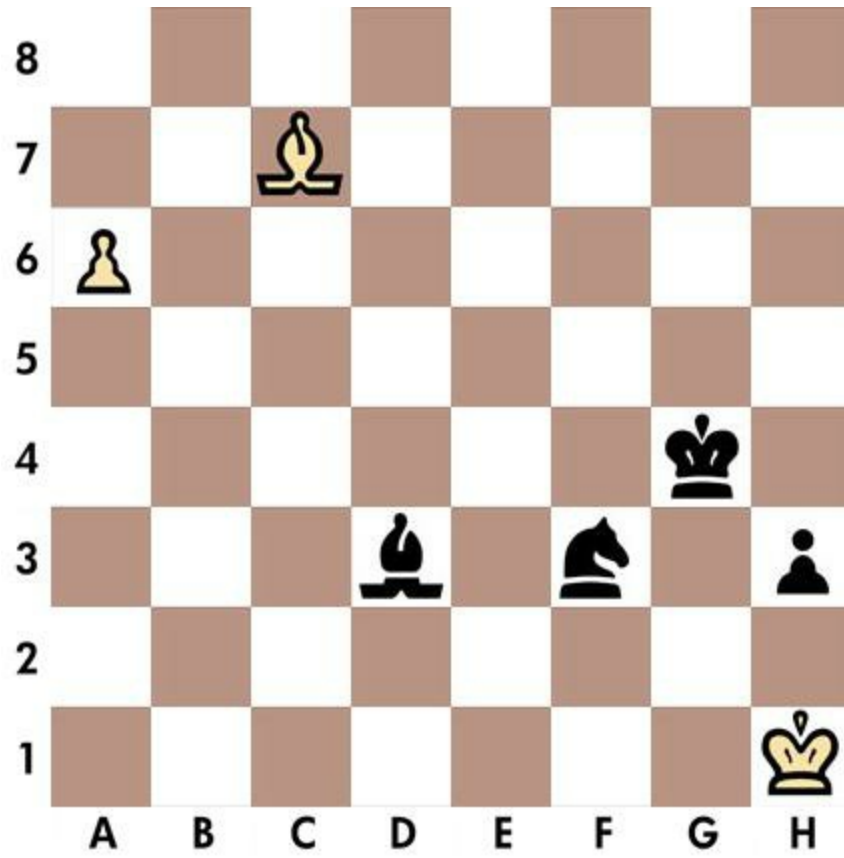


1... Rh5 2. Kxh5 Qg5

Quiz n.38 - Black to move

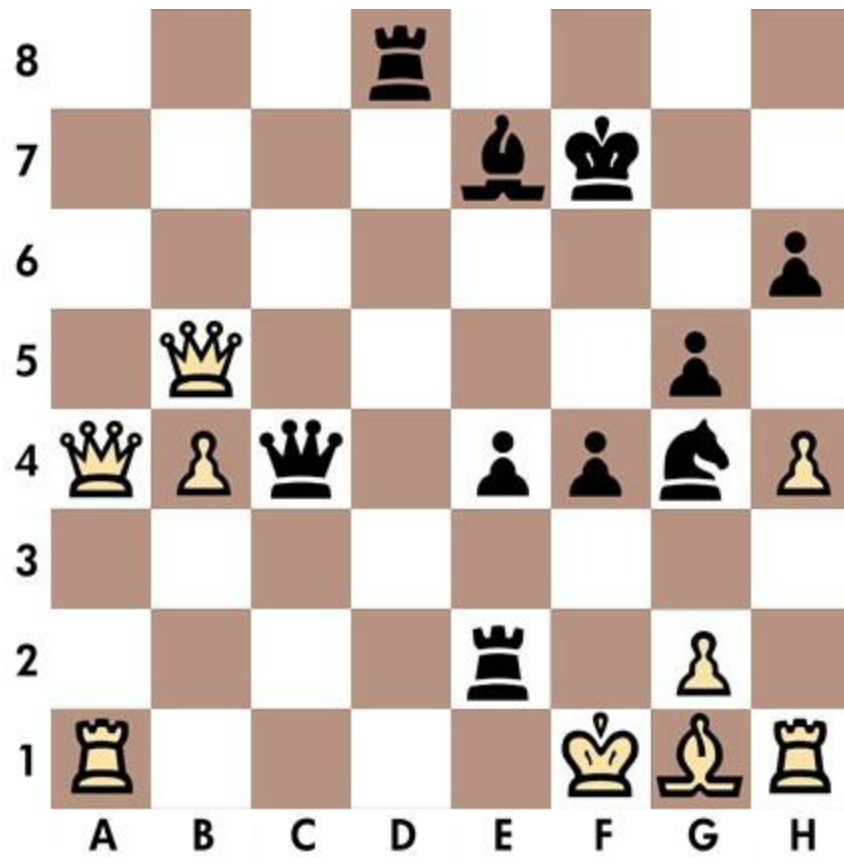


Solution n.38

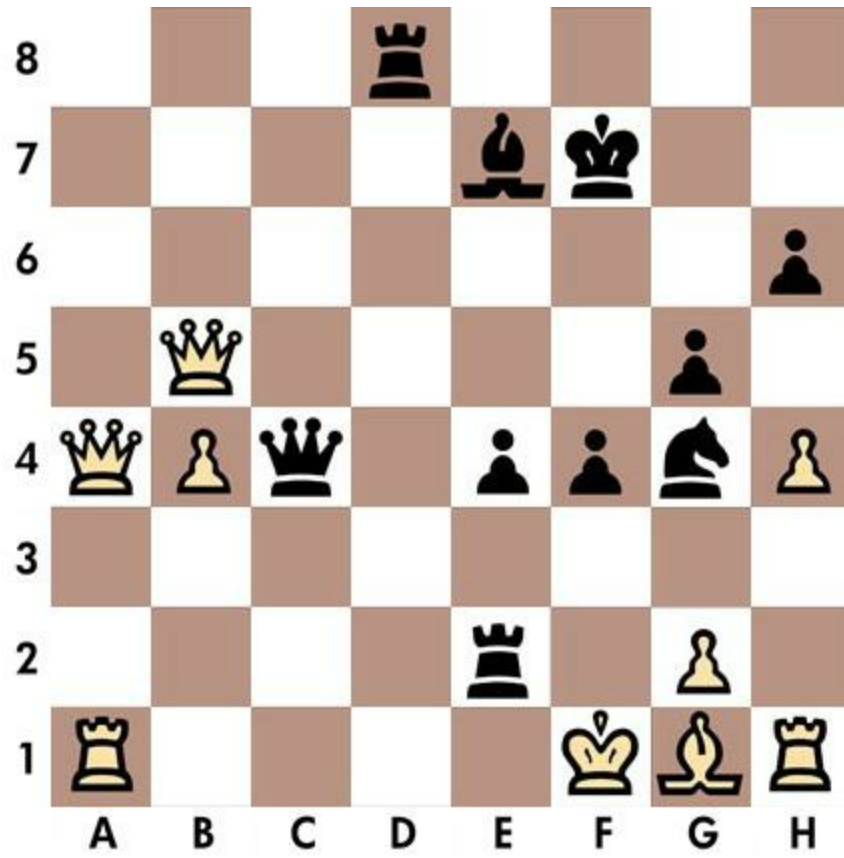


1... Bf1 2. a7 Bg2

Quiz n.39 - Black to move

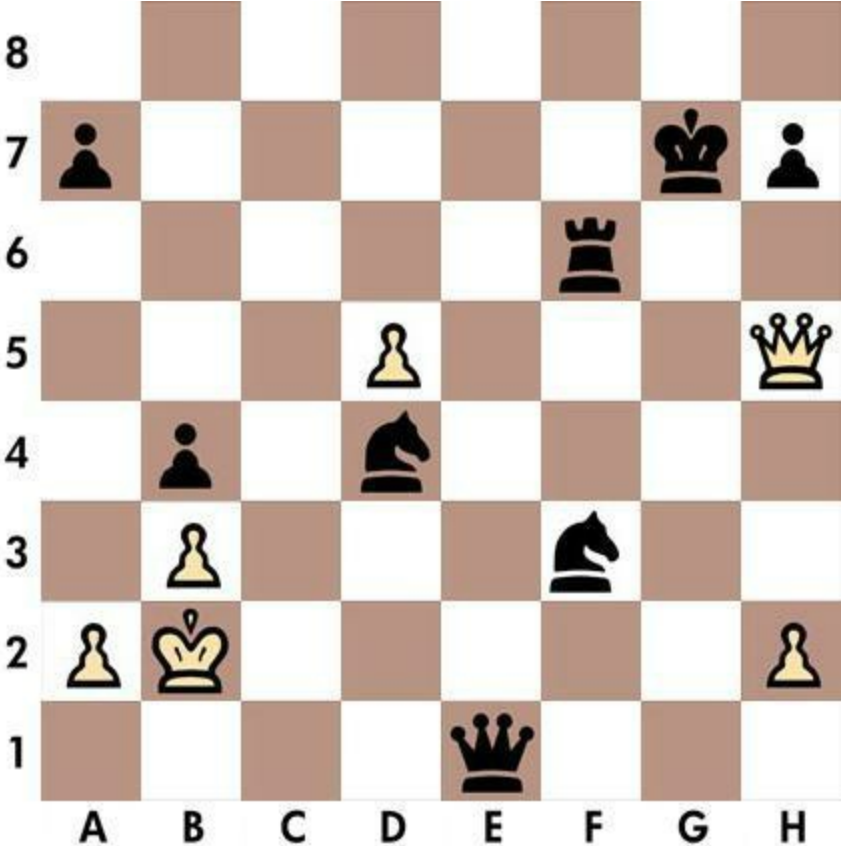


Solution n.39



1... Rf2 2. Ke1 Rf1

Quiz n.40 - Black to move



Solution n.40



1... Qc3 2. Kb1 Nd2

Chapter 5

Quizzes 41-50

For me, Chess is life and every game is like a new life. Every chess player gets to live many lives in one lifetime.

Eduard Gufeld

Quiz n.41 - Black to move

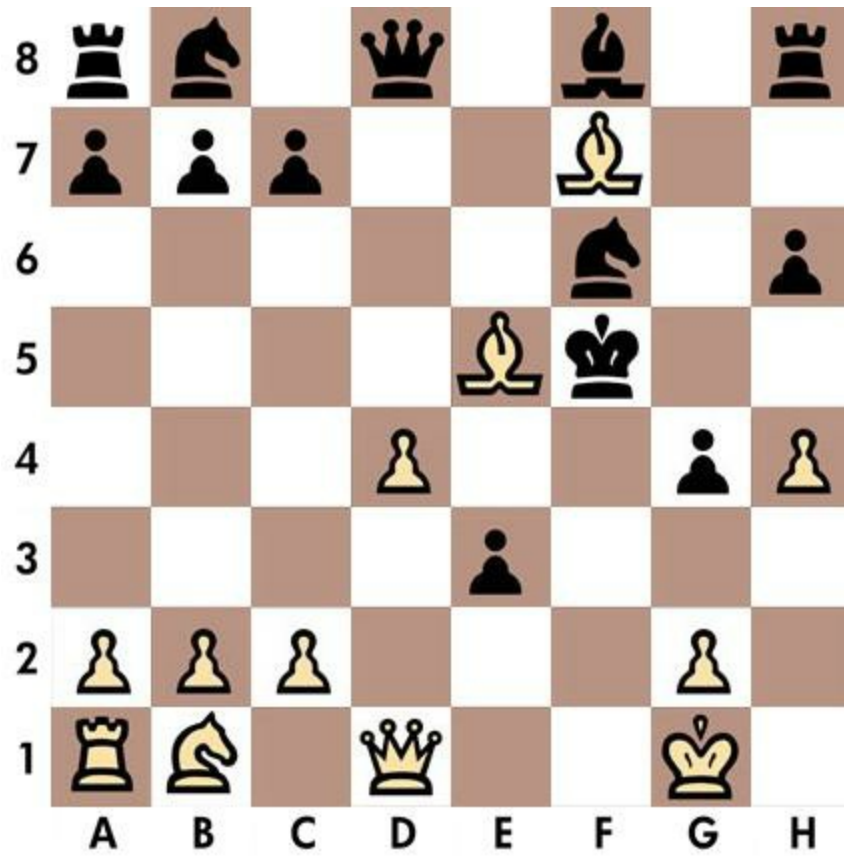


Solution n.41



1... Bf2 2. Kh2 Qg1

Quiz n.42 - White to move

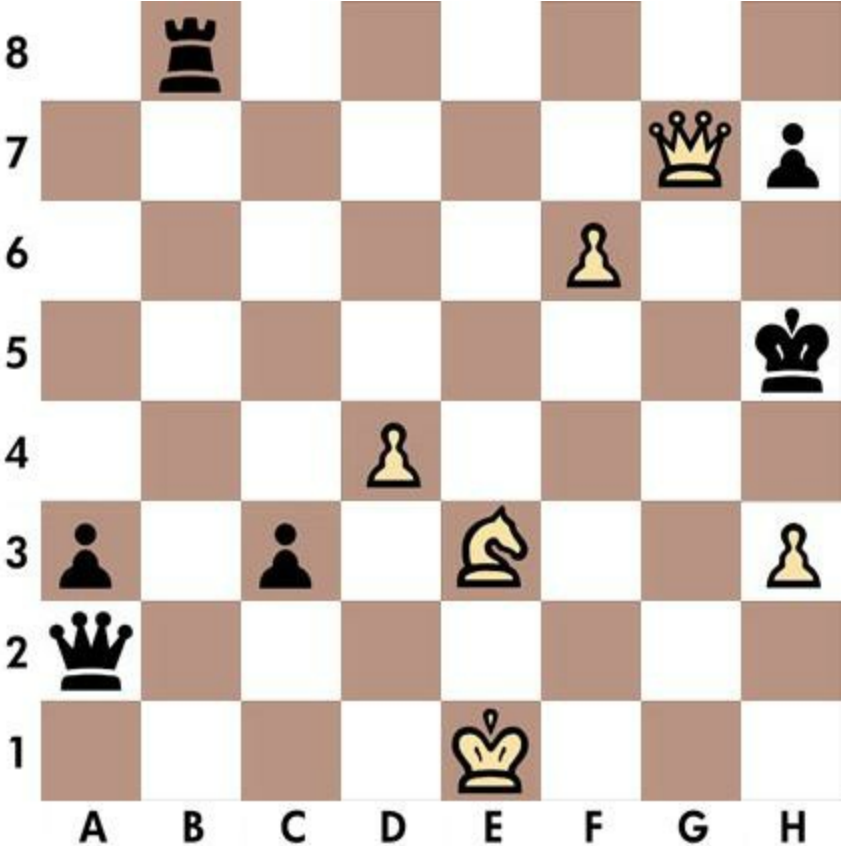


Solution n.42

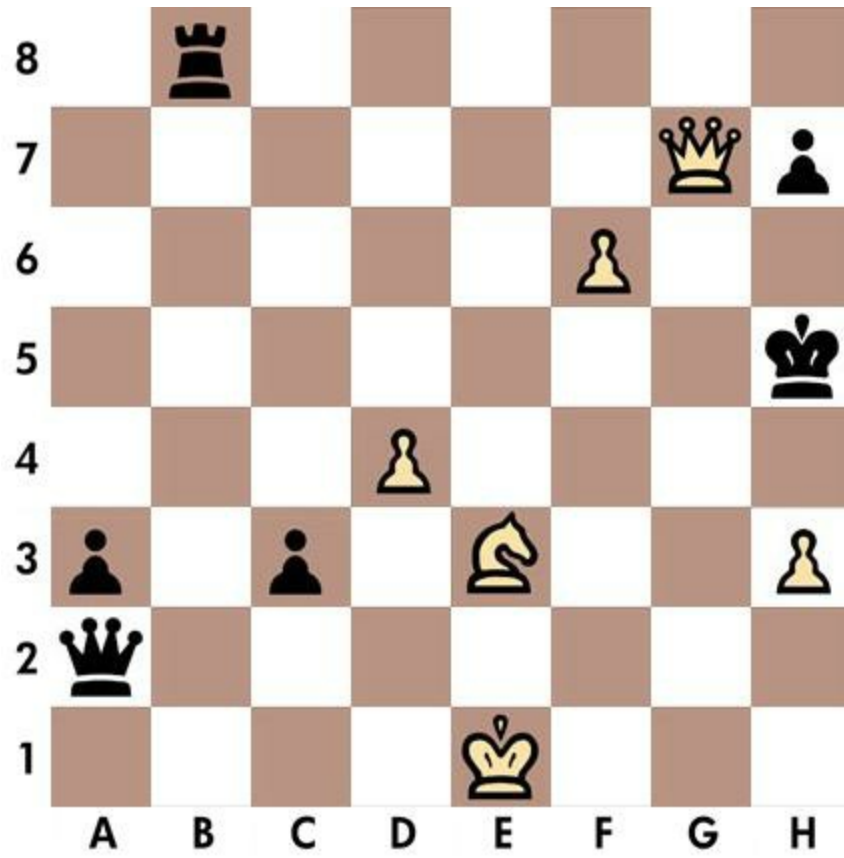


1. Qf1 Ke4 2. Nc3

Quiz n.43 - White to move



Solution n.43



1. Qg4 Kh6 2. Nf5

Quiz n.44 - White to move

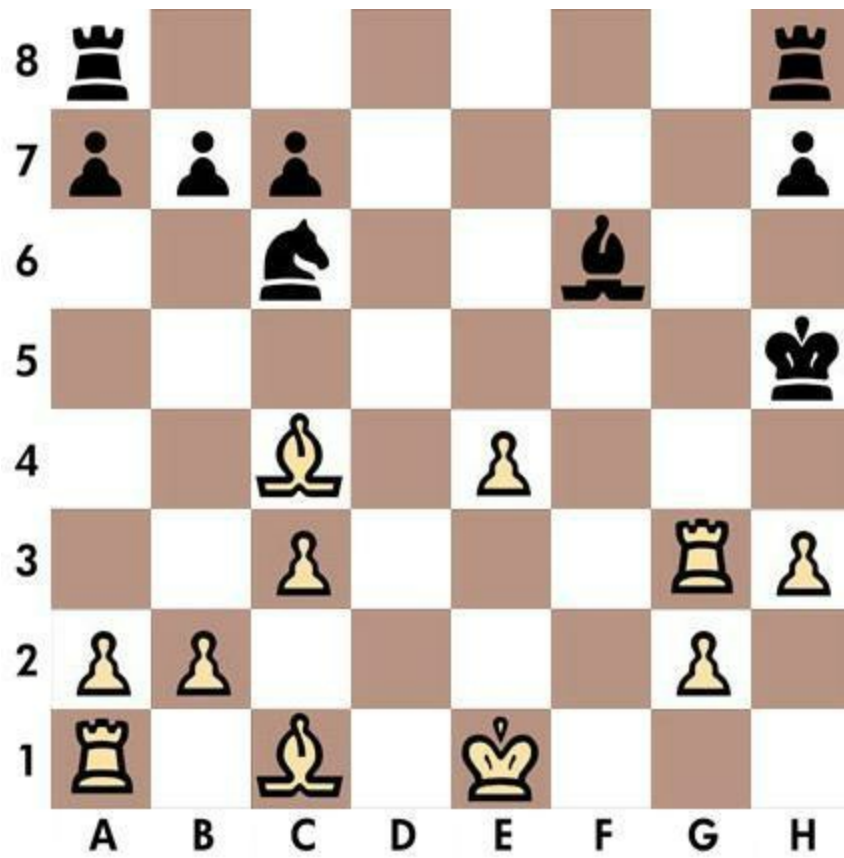


Solution n.44

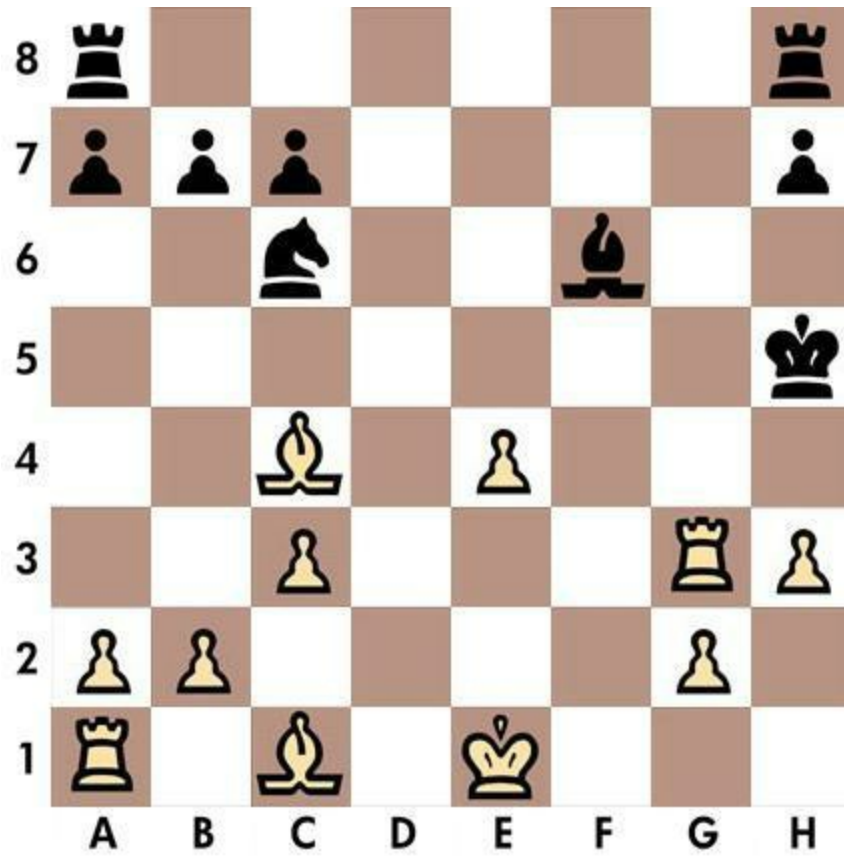


1. Rxf7 Kg8 2. Rf8

Quiz n.45 - White to move



Solution n.45



1. Bf7 Kh4 2. Rg4

Quiz n.46 - White to move



Solution n.46



1. Qf7 Kh8 2. Be5

Quiz n.47 - White to move



Solution n.47



1. Rh5 gxh5 2. g5

Quiz n.48 - White to move

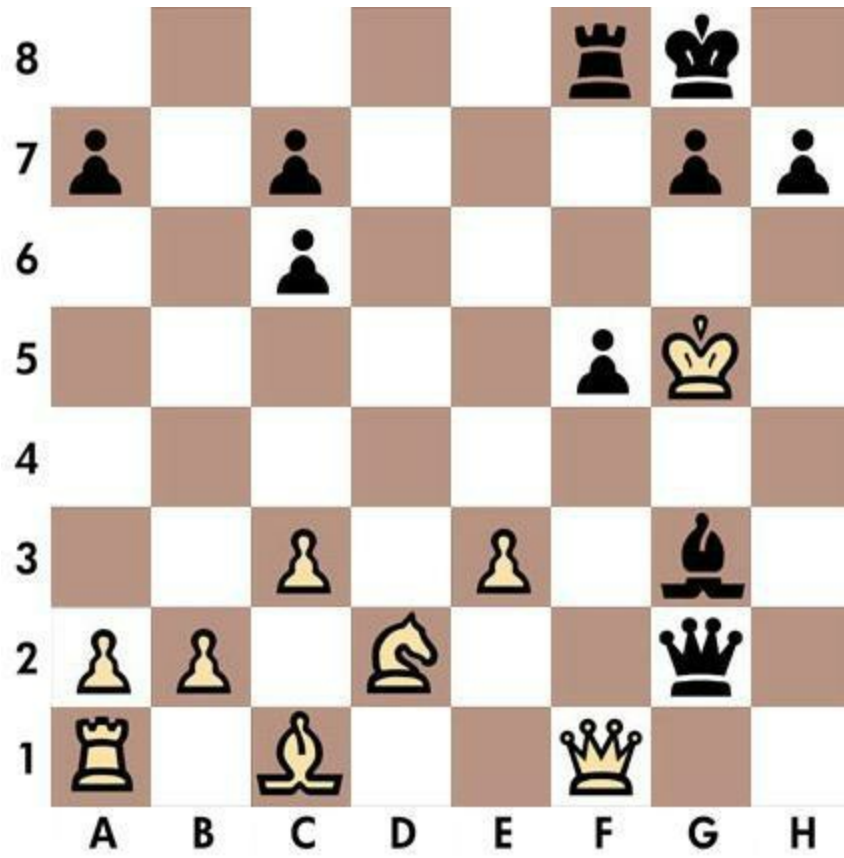


Solution n.48

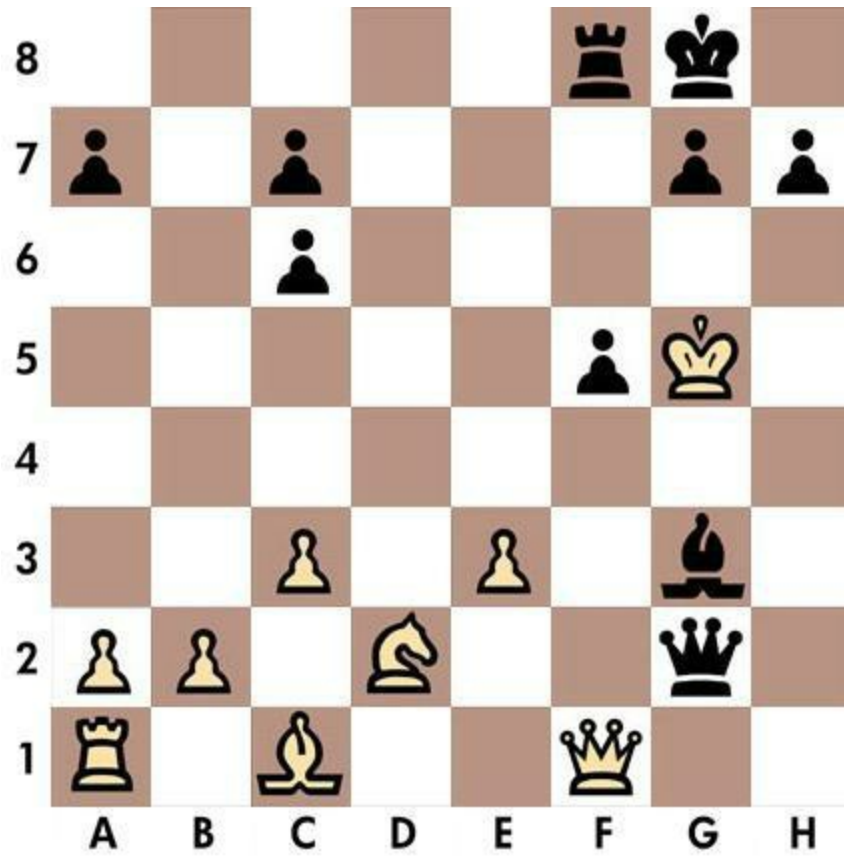


1. Be8 Nxe4 2. Bf7

Quiz n.49 - Black to move



Solution n.49



1... Bh4 2. Kxh4 Qg4

Quiz n.50 - White to move



Solution n.50



1. Bc5 Kg8 2. Bc4

Chapter 6

Quizzes 51-60

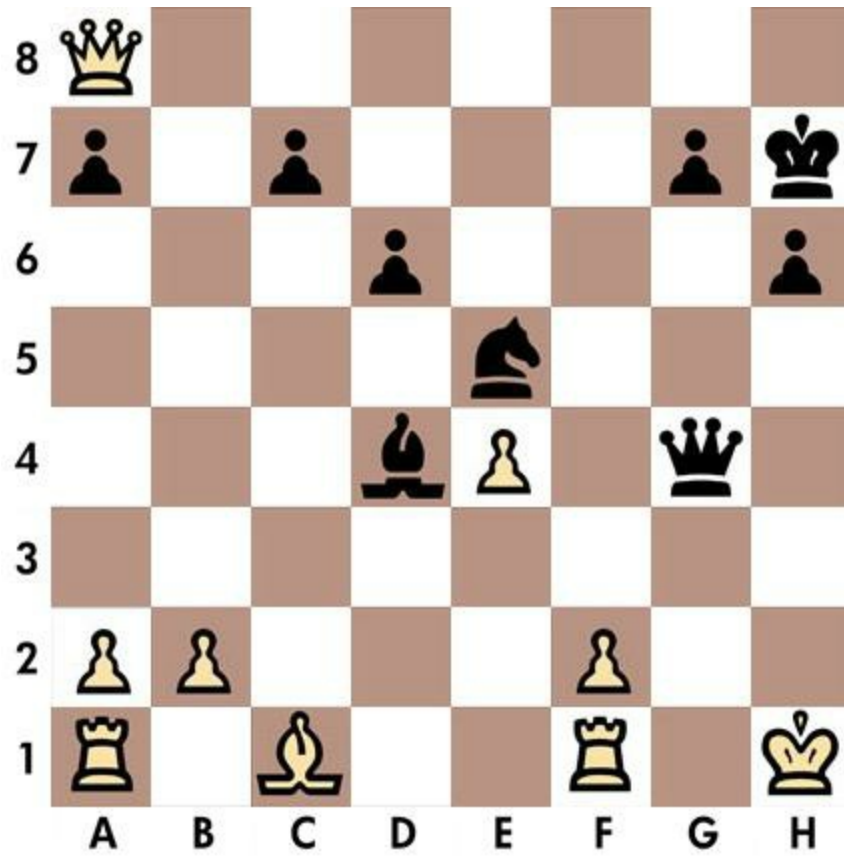
I have frequently stated that I regard chess as an art form, where creativity prevails over other factors.

Vasily Smyslov

Quiz n.51 - Black to move



Solution n.51



1... Qh3 2. Kg1 Nf3

Quiz n.52 - White to move



Solution n.52



1. Qxg6 Kh4 2. Nf5

Solution n.53



1. a4 Nxa4 2. c4

Quiz n.54 - White to move



Solution n.54



1. Rh4 Kd3 2. Qf3

Quiz n.55 - Black to move

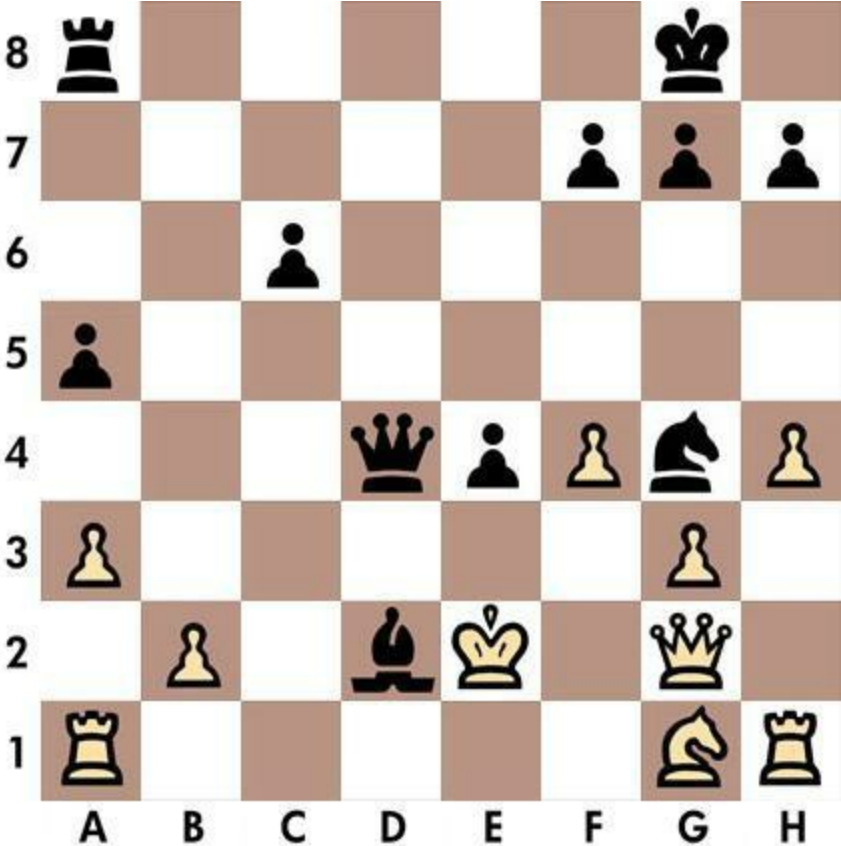


Solution n.55



1... Rc1 2. Nxc1 Qf2

Quiz n.56 - Black to move



Solution n.56



1... Qd3 2. Kd1 Ne3

Quiz n.57 - White to move

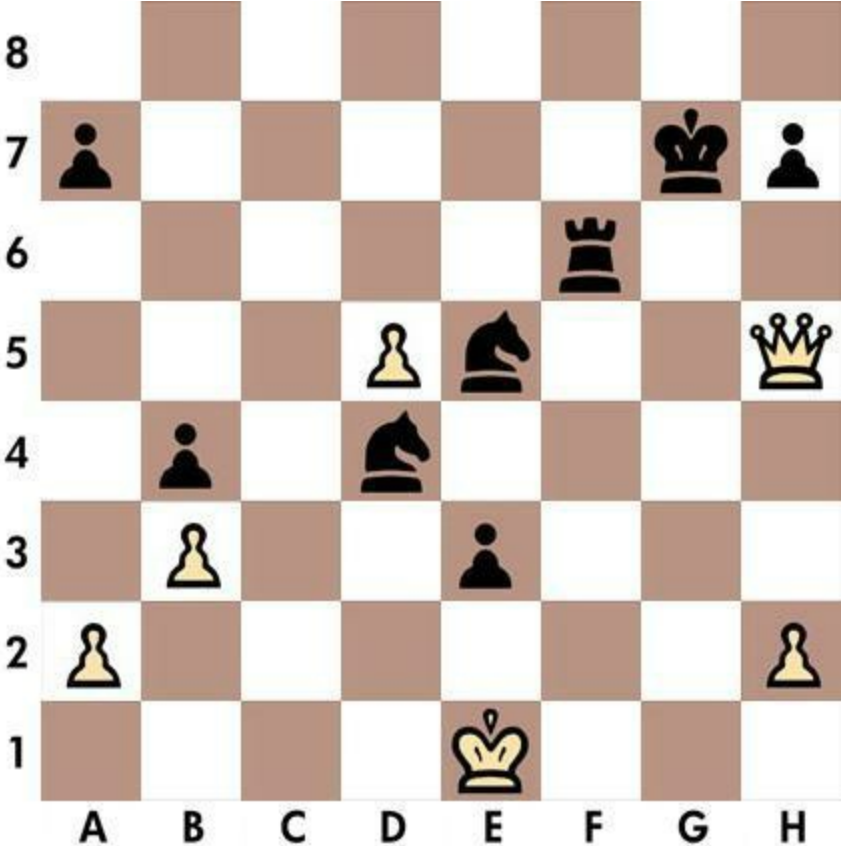


Solution n.57

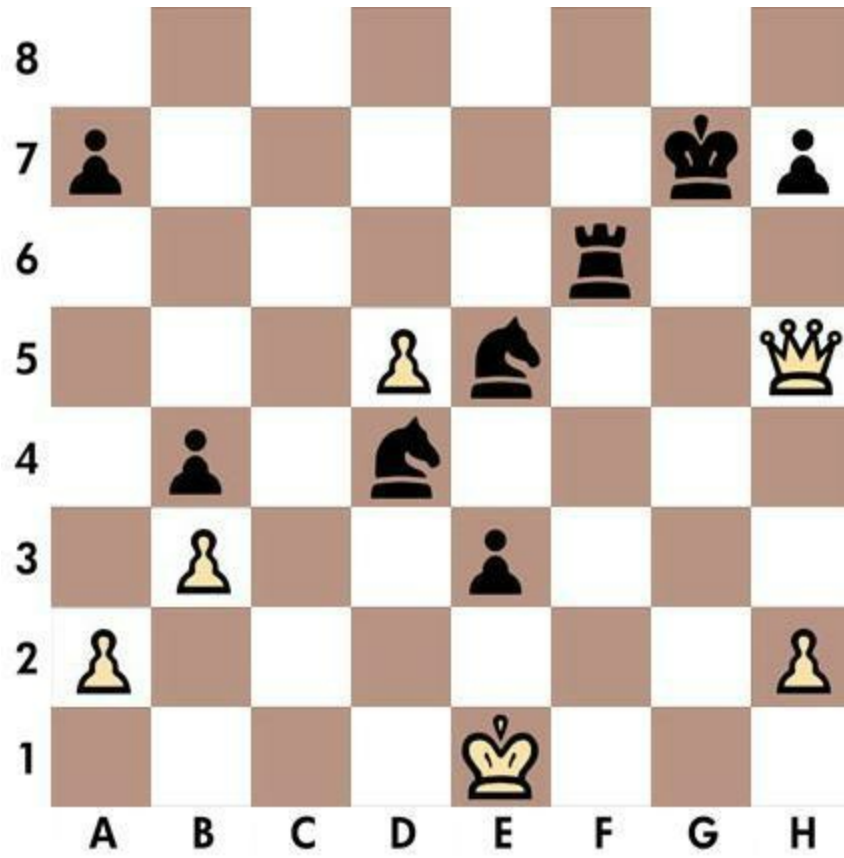


1. Bd6 Kb6 2. Rb8

Quiz n.58 - Black to move

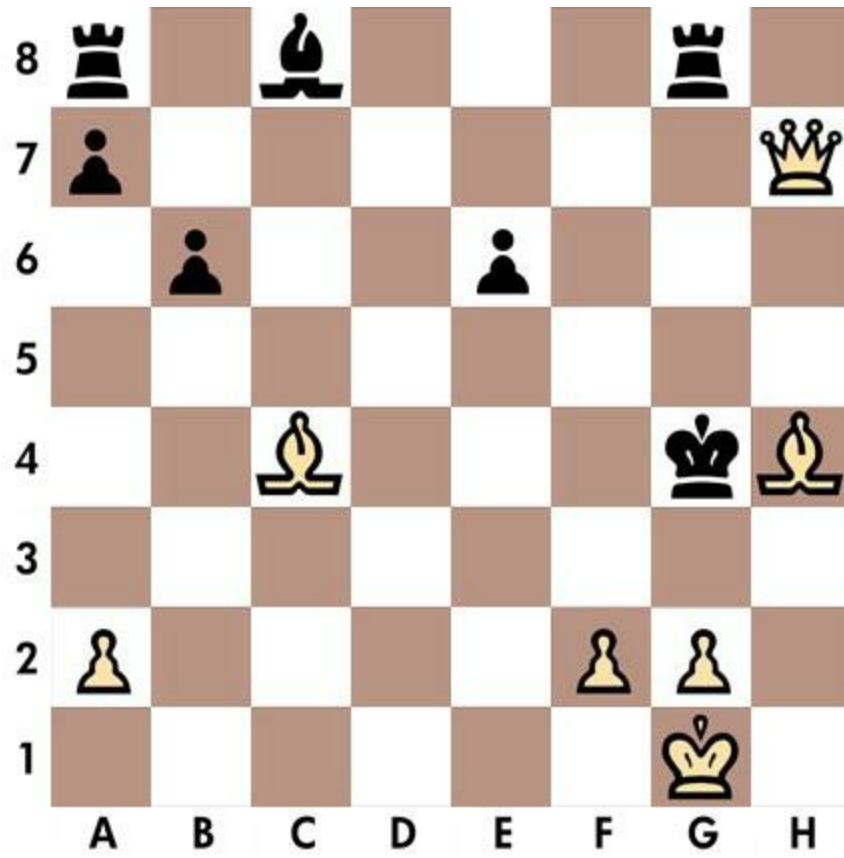


Solution n.58



1... Nd3 2. Kd1 Rf1

Quiz n.59 - White to move



Solution n.59



1. f3 Kf4 2. Qe4

Quiz n.60 - White to move



Solution n.60



1. Qf5 g6 2. hxg6

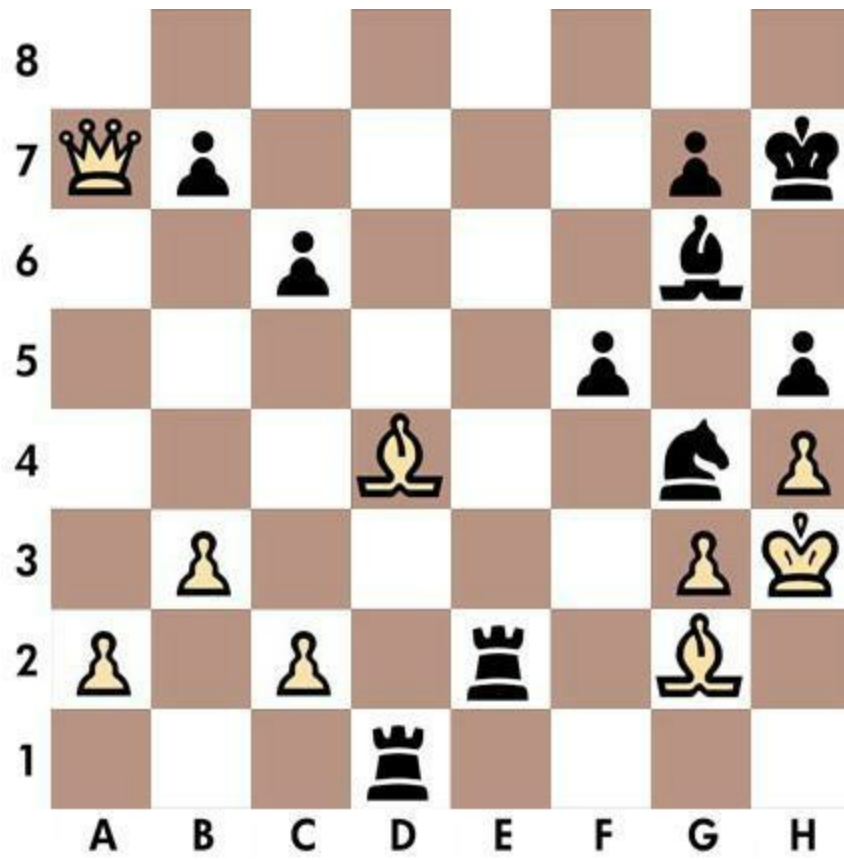
Chapter 7

Quizzes 61-70

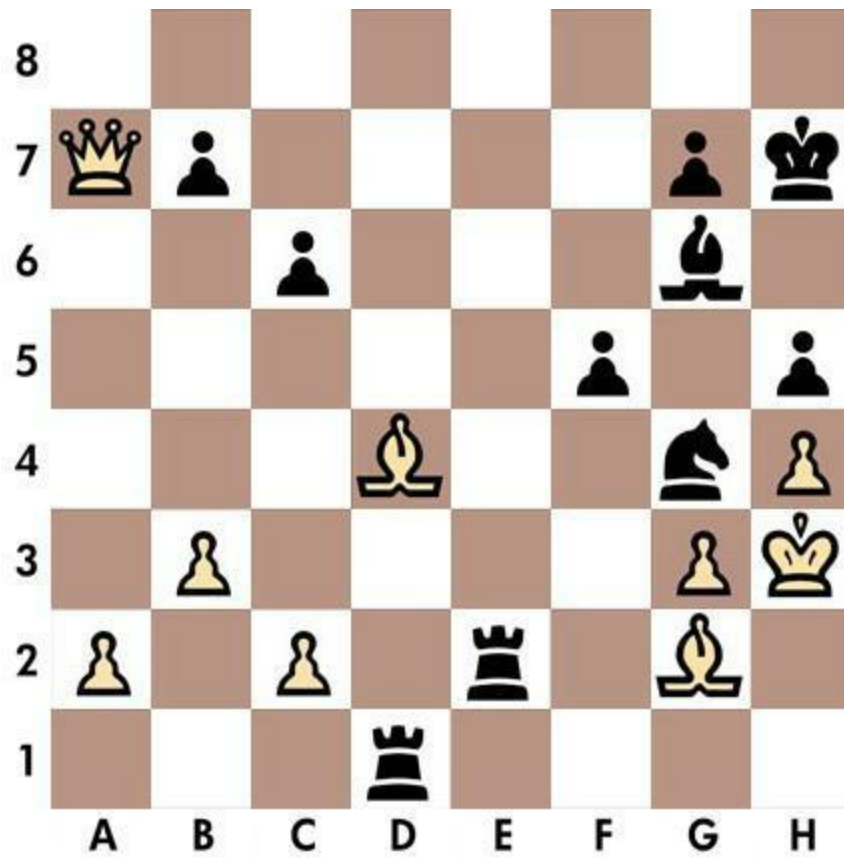
The older I grow, the more I value pawns.

Paul Keres

Quiz n.61 - Black to move

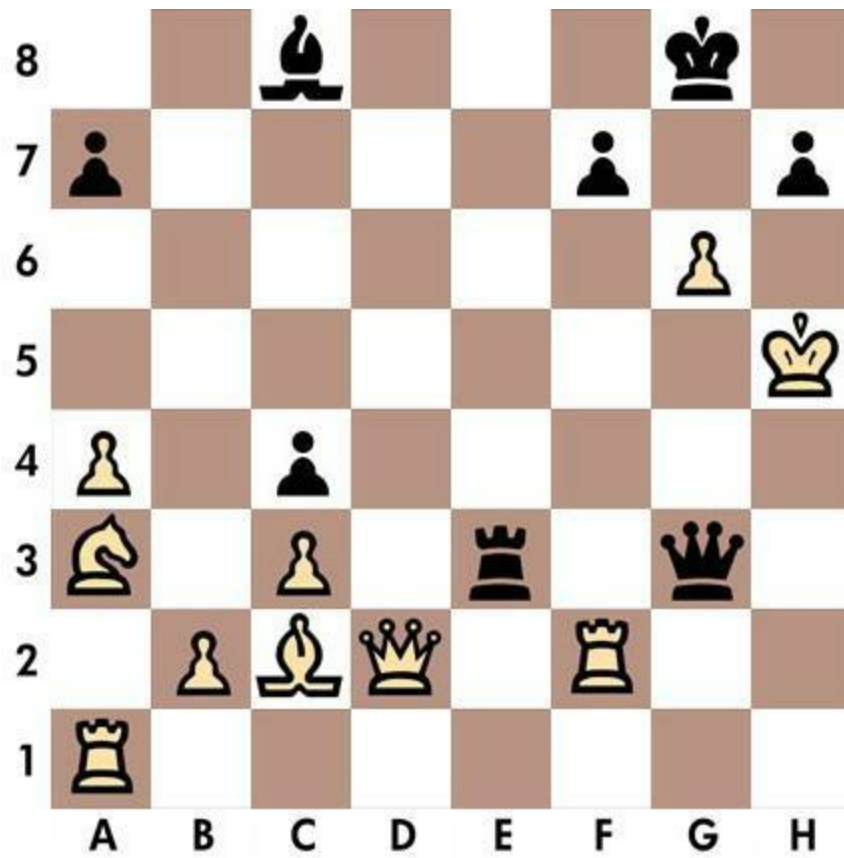


Solution n.61



1... Rh1 2. Bxh1 Rh2

Quiz n.62 - Black to move



Solution n.62



1... Qg4 2. Kh6 Rh3

Quiz n.63 - White to move



Solution n.63



1. Qa5 Kb2 2. Rab1

Quiz n.64 - Black to move



Solution n.64

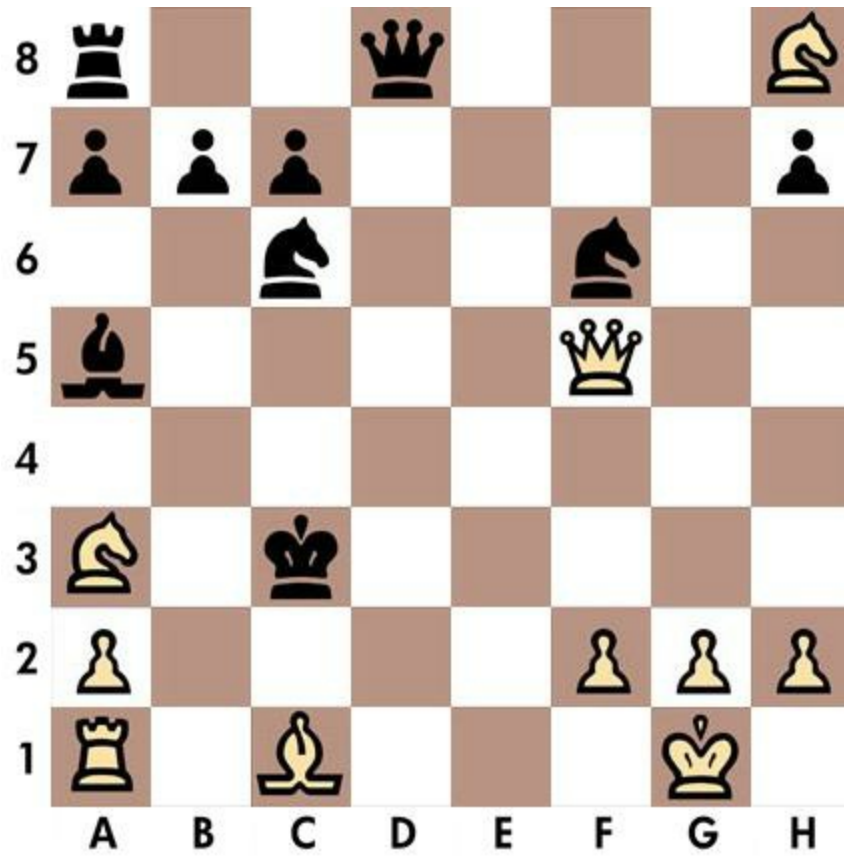


1... Nf4 2. Kg3 Ne2

Quiz n.65 - White to move

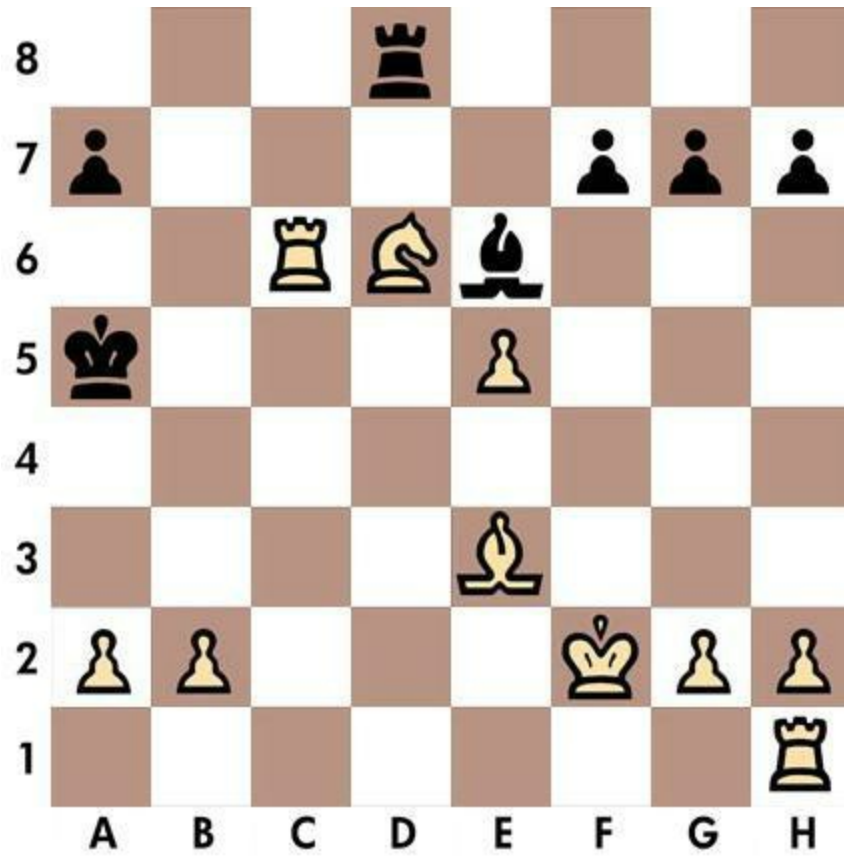


Solution n.65



1. Qc5 Kd3 2. Qe3

Solution n.66

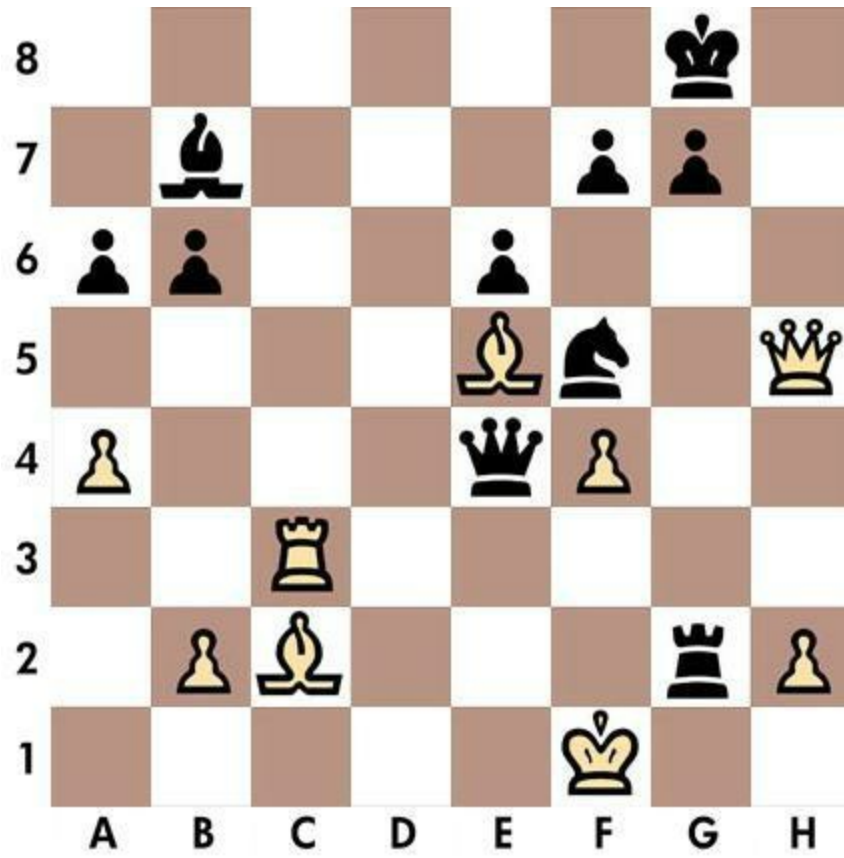


1. Bd2 Ka4 2. Ra6

Quiz n.67 - Black to move

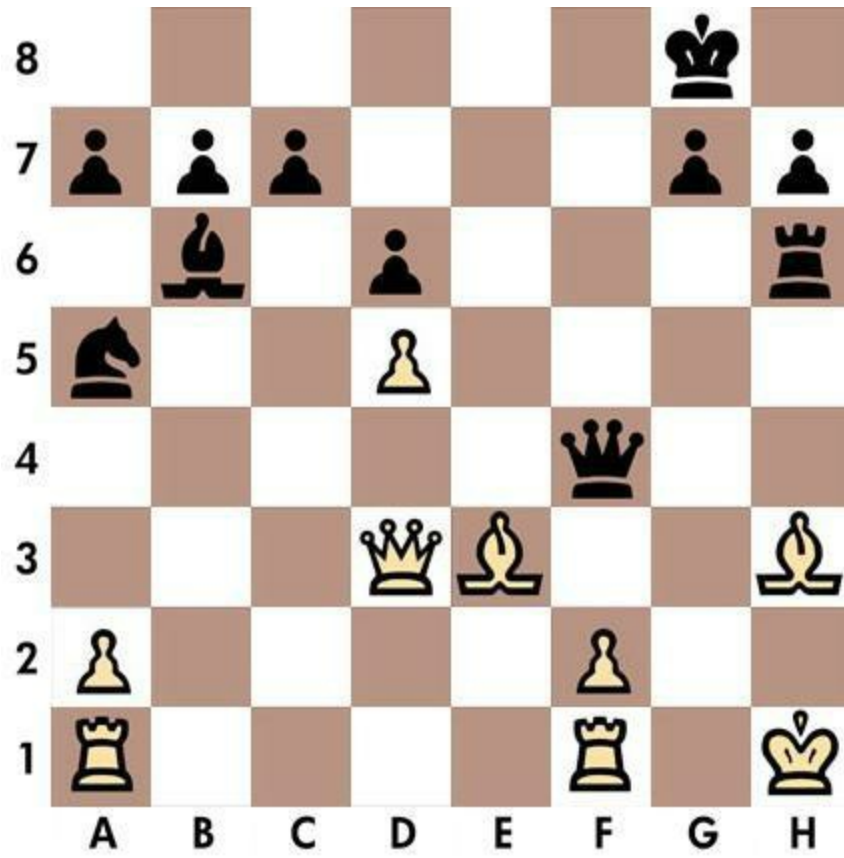


Solution n.67

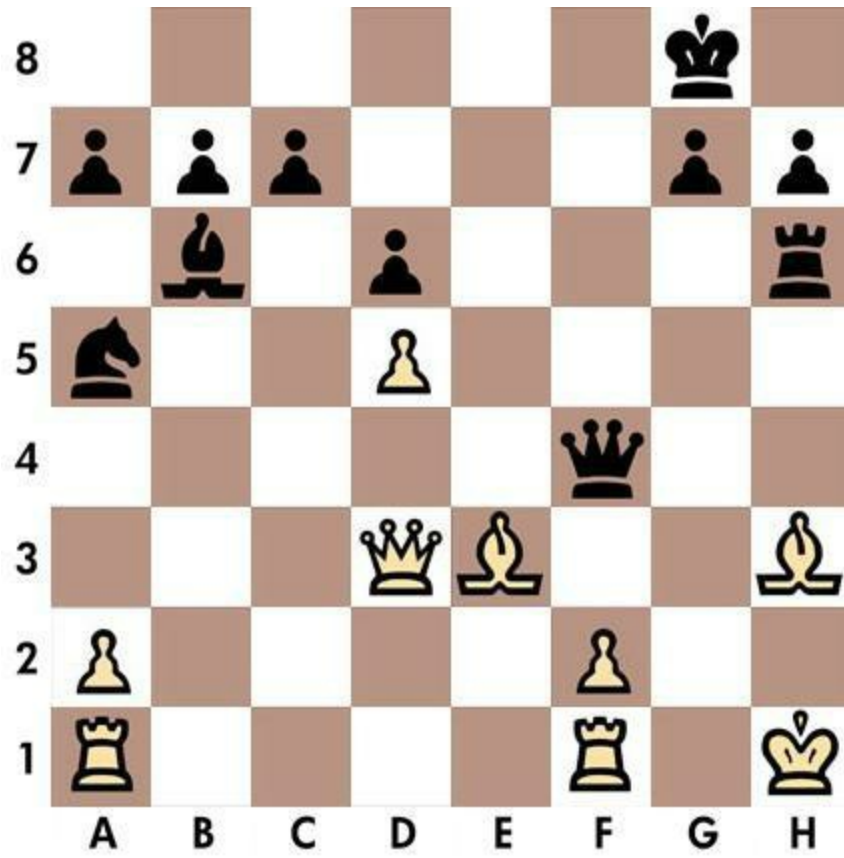


1... Rg1 2. Kxg1 Qe1

Quiz n.68 - Black to move

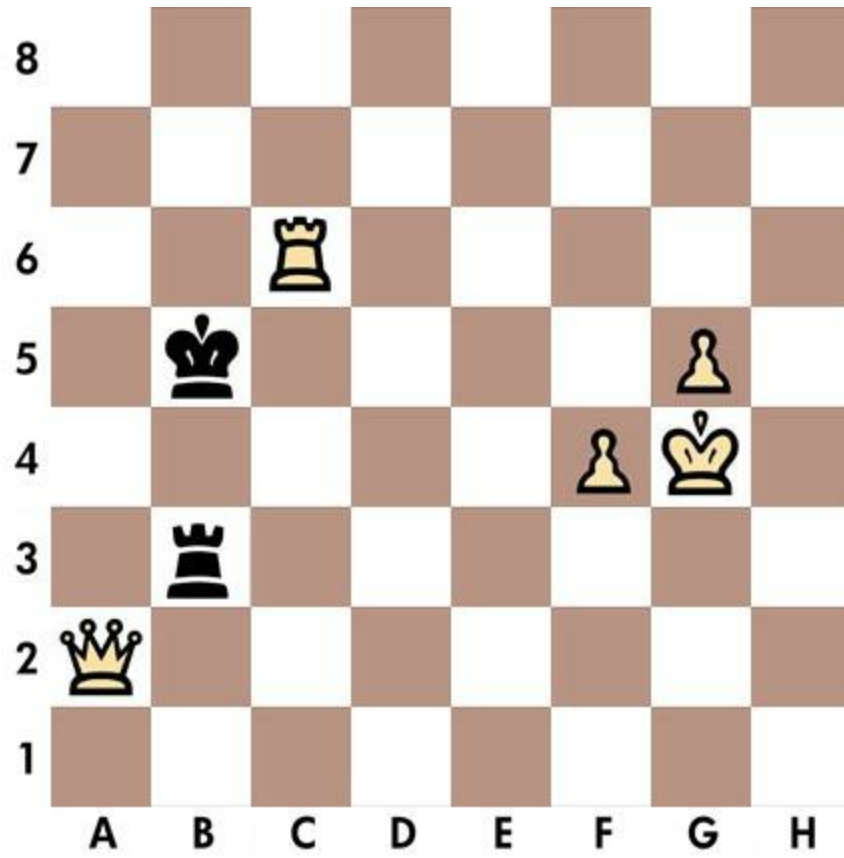


Solution n.68



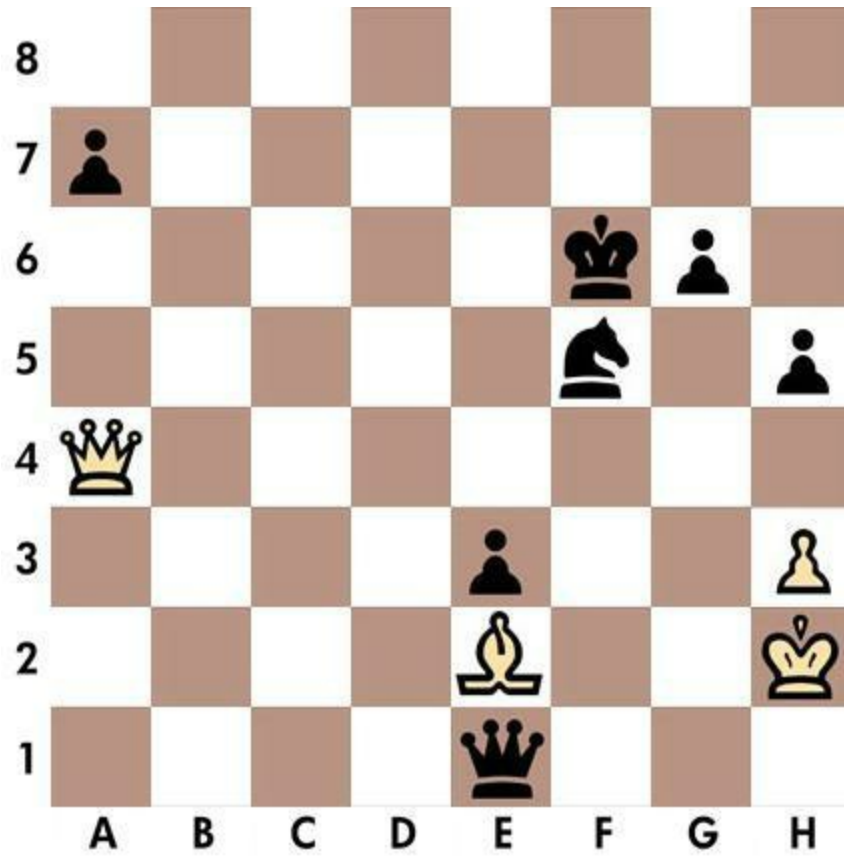
1... Rxh3 2. Kg1 Qh2

Solution n.69

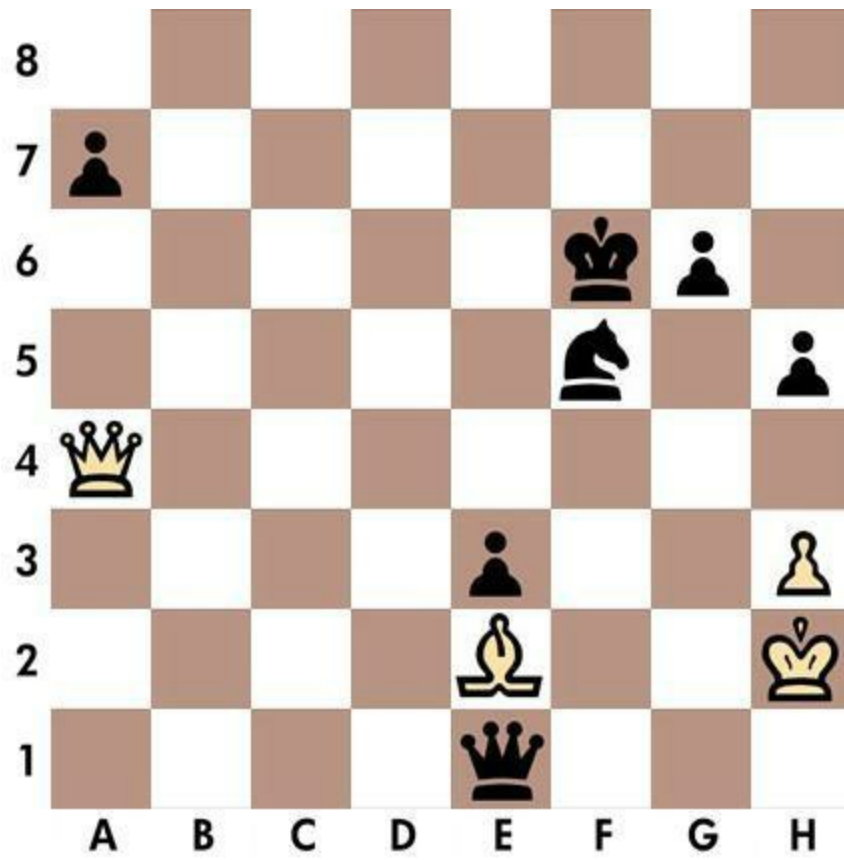


1. Qa6 Kb4 2. Rc4

Quiz n.70 - Black to move



Solution n.70



1... Qf2 2. Kh1 Ng3

Chapter 8

Quizzes 71-80

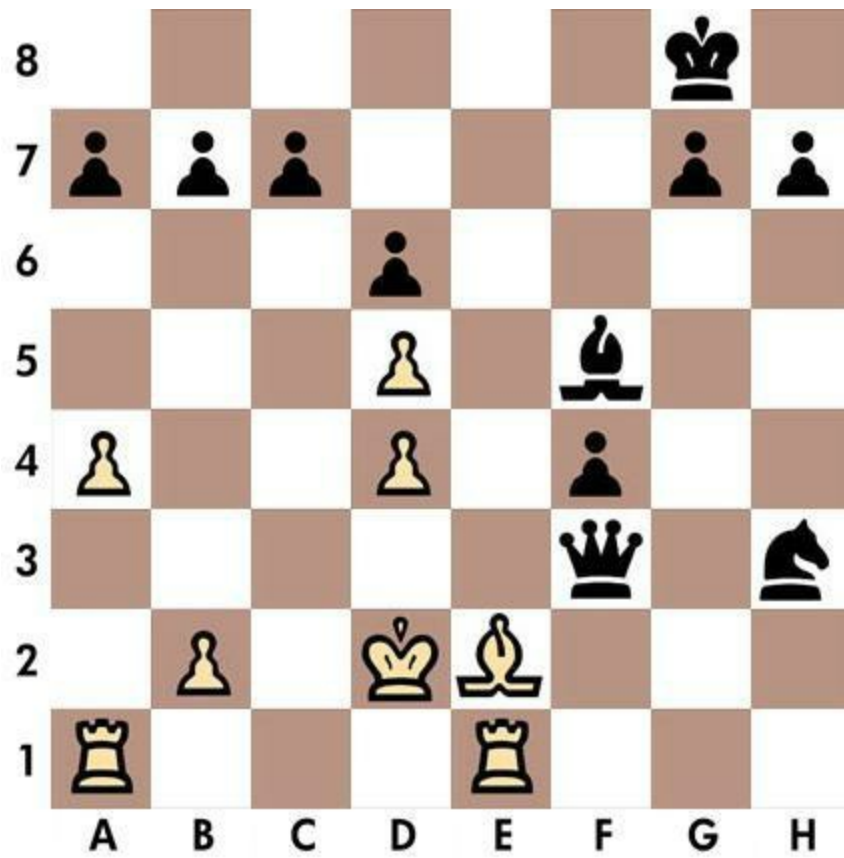
The tactician must know what to do whenever something needs doing the strategist must know what to do when nothing needs doing.

Savielly Tartakower

Quiz n.71 - Black to move

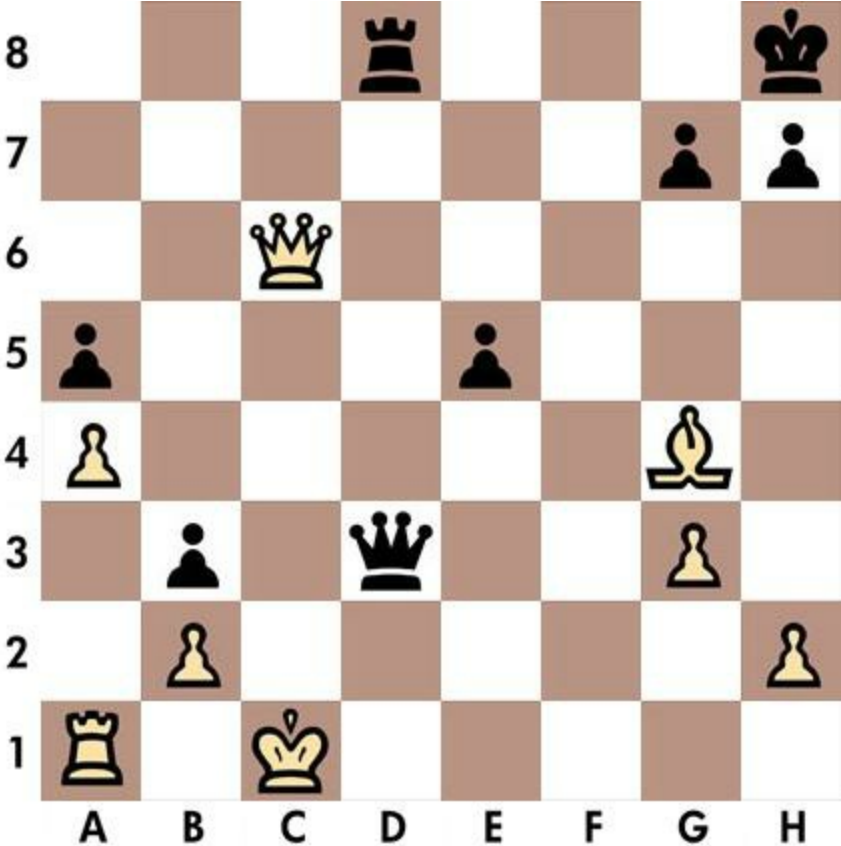


Solution n.71



1... Qe3 2. Kd1 Nf2

Quiz n.72 - Black to move

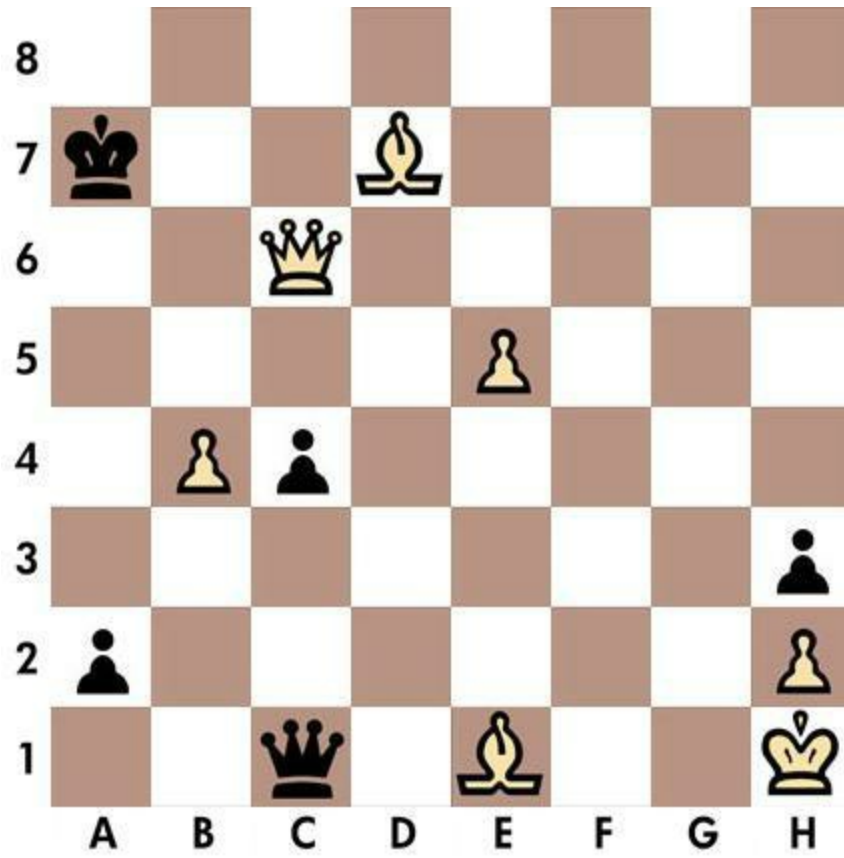


Solution n.72

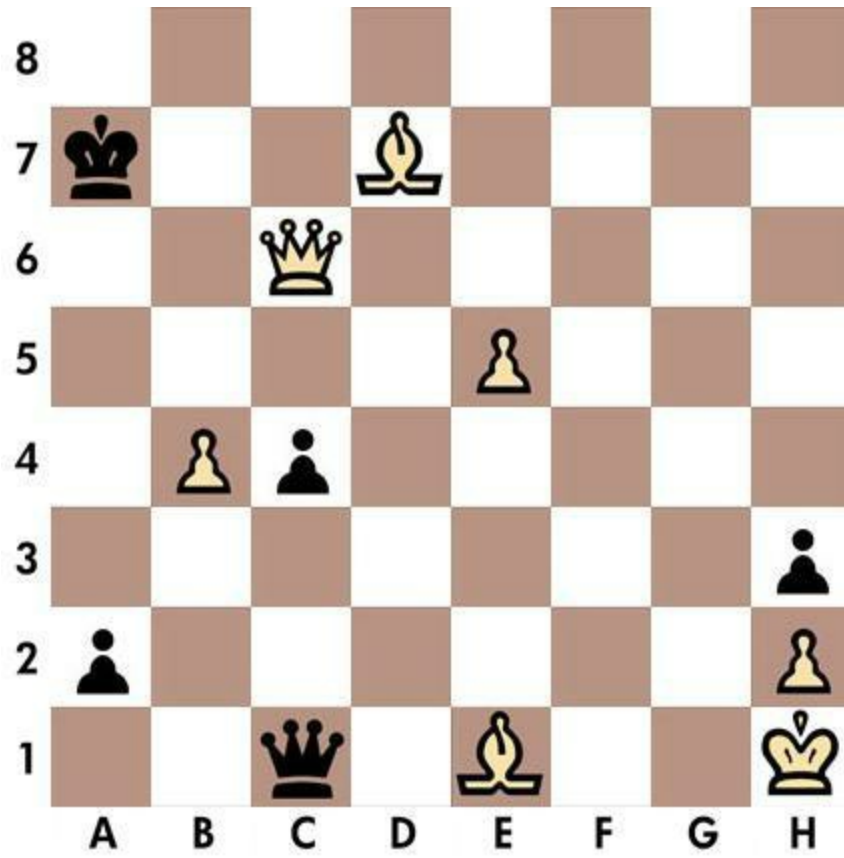


1... Qf1 2. Bd1 Rxd1

Quiz n.73 - White to move



Solution n.73



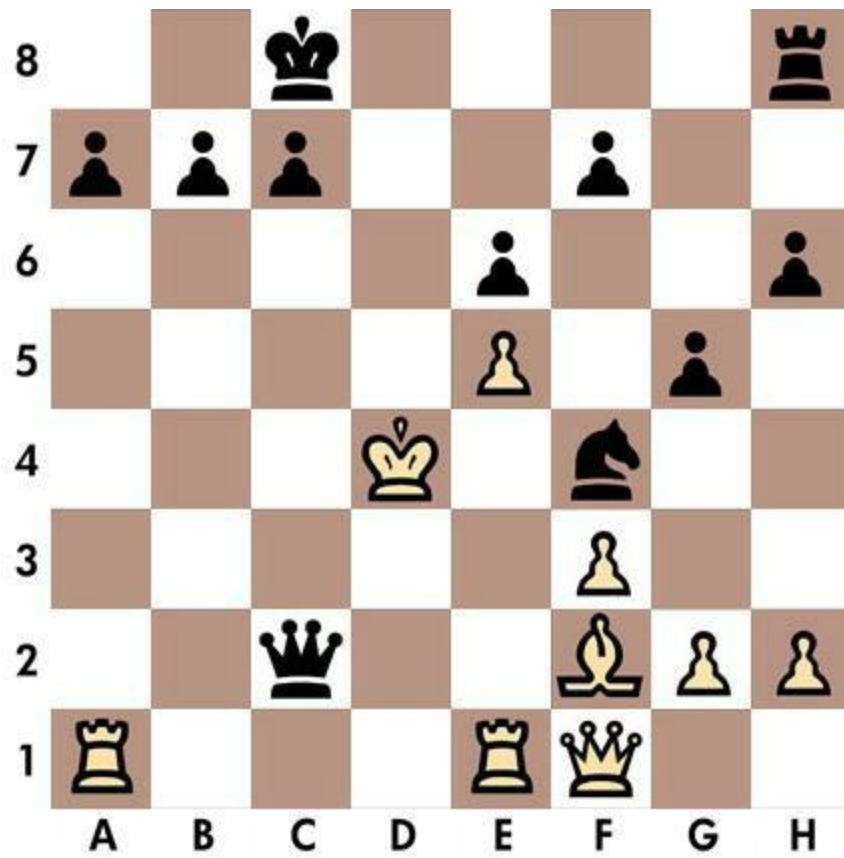
1. Qc7 Ka8 2. Bc6

Solution n.74

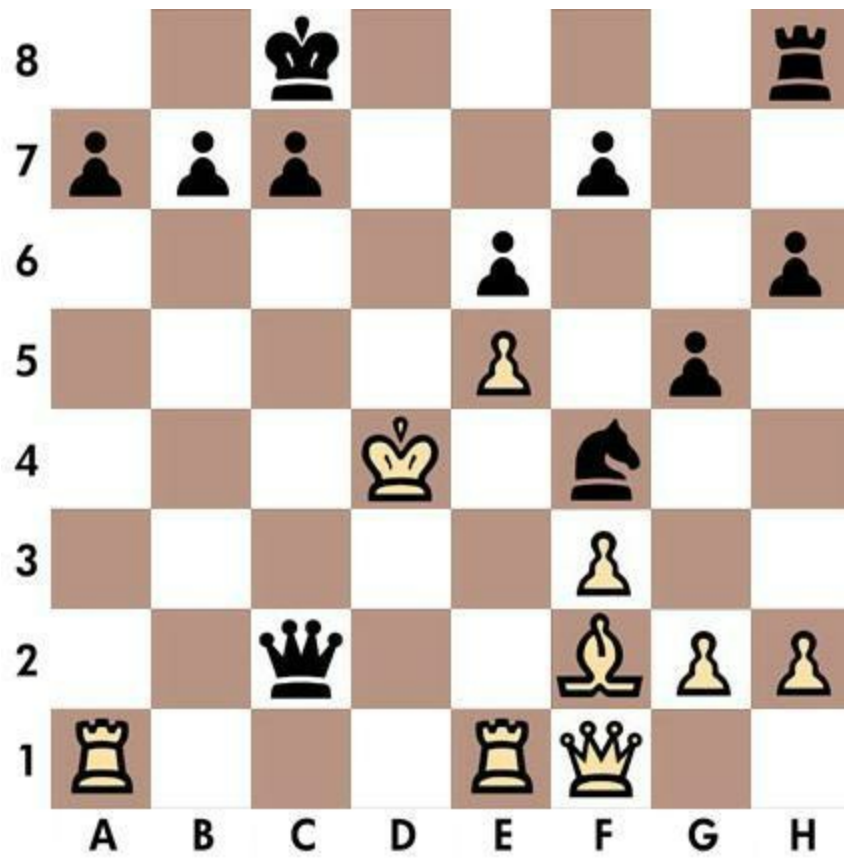


1. Bg7 Kg8 2. Bxf6

Quiz n.75 - Black to move



Solution n.75



1... c5 2. Ke3 Nd5

Quiz n.76 - Black to move

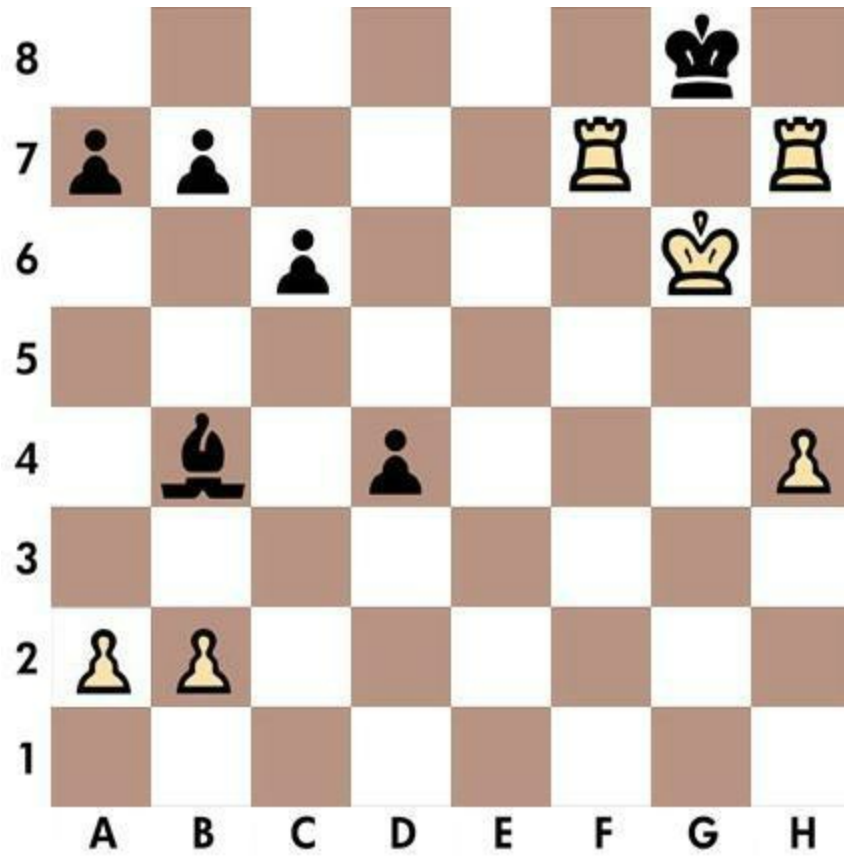


Solution n.76



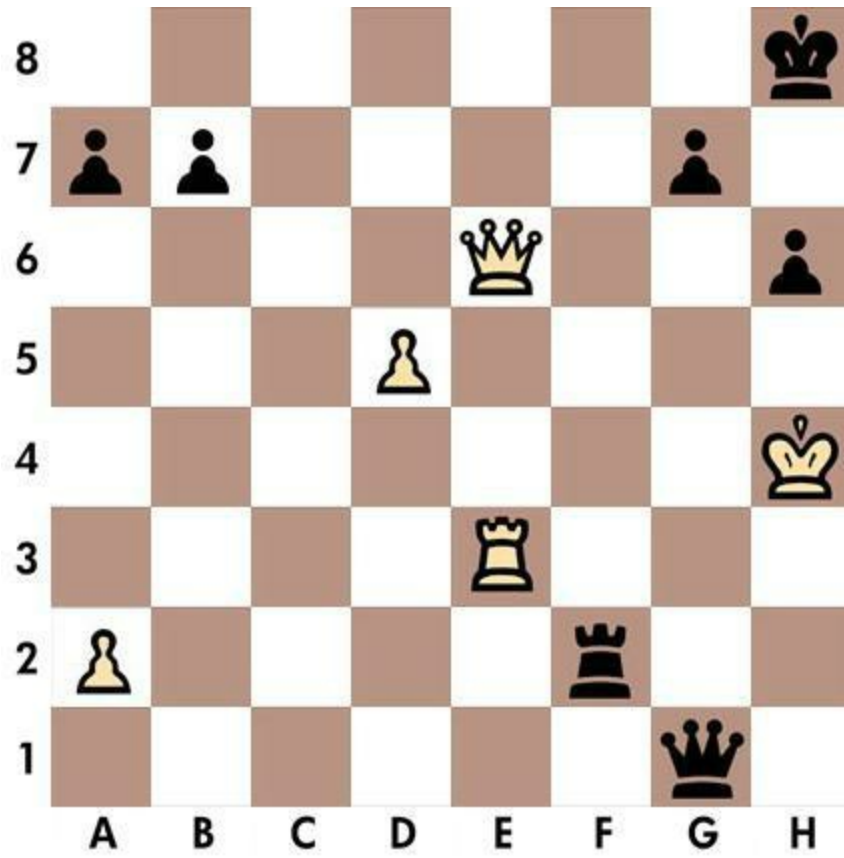
1... Ng3 2. Kf2 Re2

Solution n.77



1. Rfg7 Kf8 2. Rh8

Solution n.78



1... Rh2 2. Rh3 Qg5

Quiz n.79 - White to move



Solution n.79



1. Qxh7 Kxf6 2. Ng4

Quiz n.80 - Black to move



Solution n.80



1... Qe3 2. Kf1 g2

Chapter 9

Quizzes 81-90

Every pawn is a potential queen.

James Mason

Quiz n.81 - White to move



Solution n.81



1. Nf7 Nxd4 2. Nh6

Solution n.82

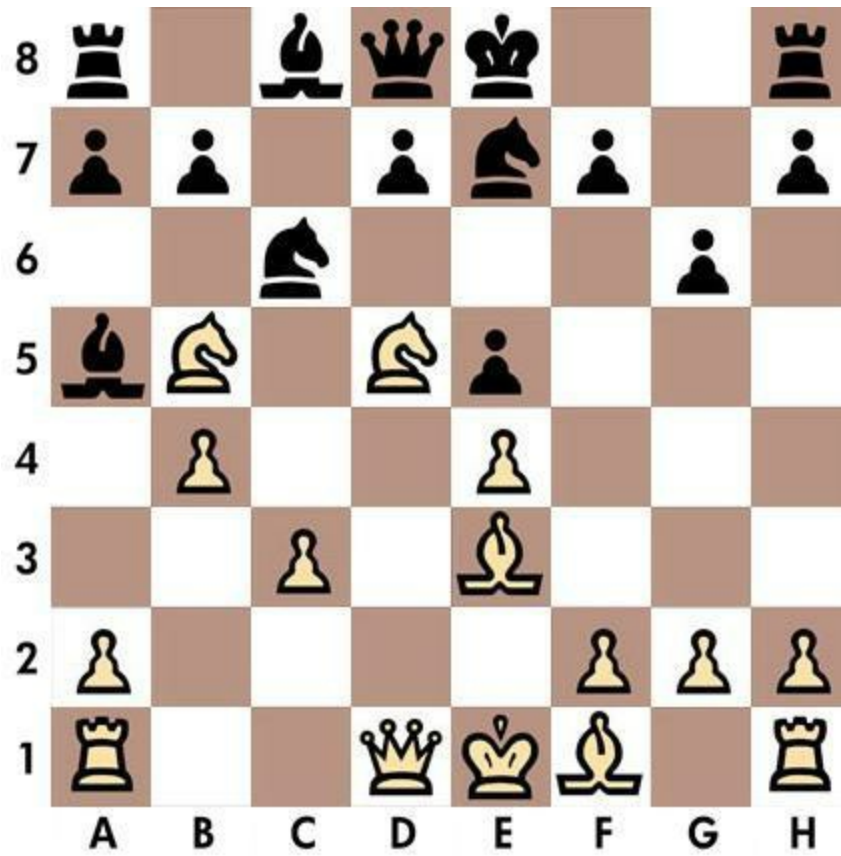


1. g8=Q Rxc8 2. Qh5

Quiz n.83 - White to move



Solution n.83



1. Nf6 Kf8 2. Bh6

Quiz n.84 - White to move

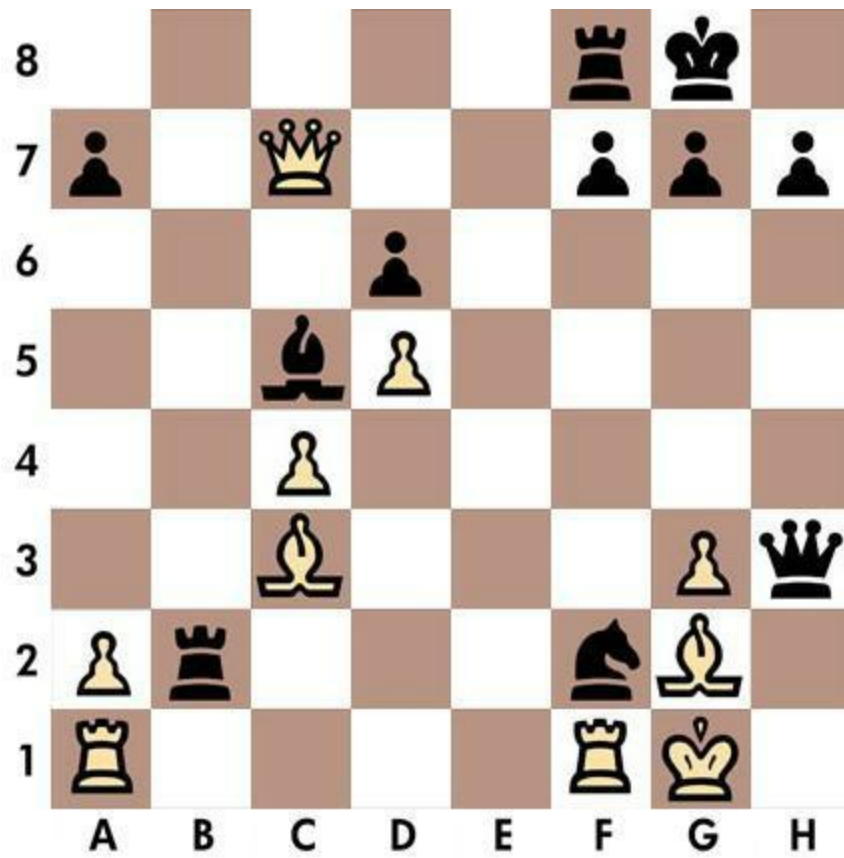


Solution n.84

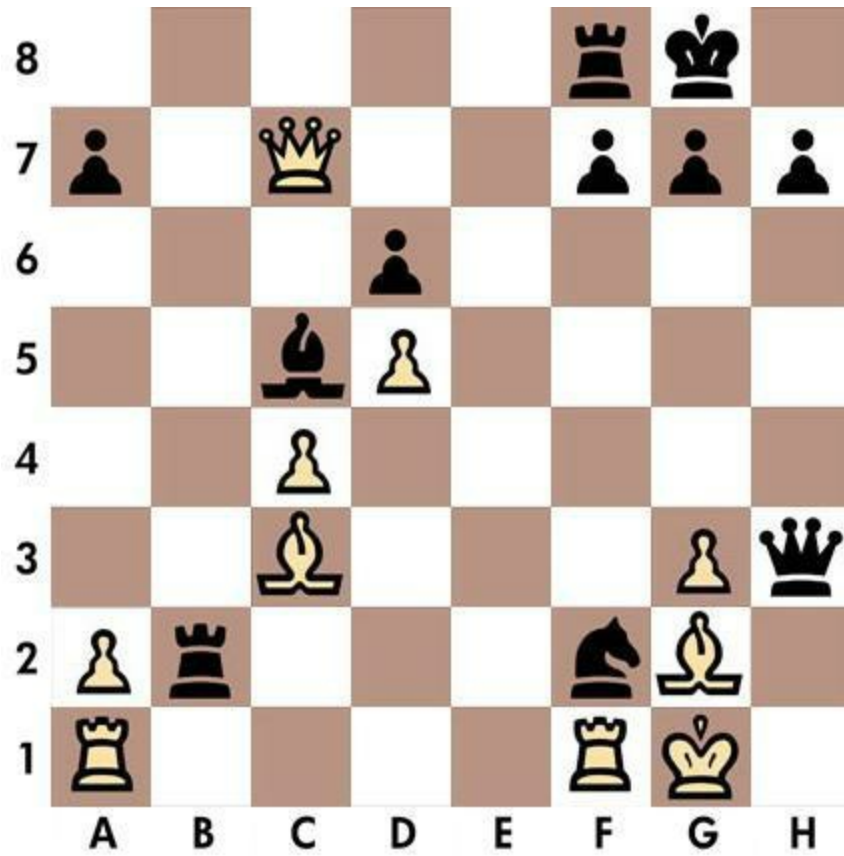


1. Nxb6 Kb8 2. Qa8

Quiz n.85 - Black to move



Solution n.85



1... Qh1 2. Bxh1 Nh3

Quiz n.86 - White to move

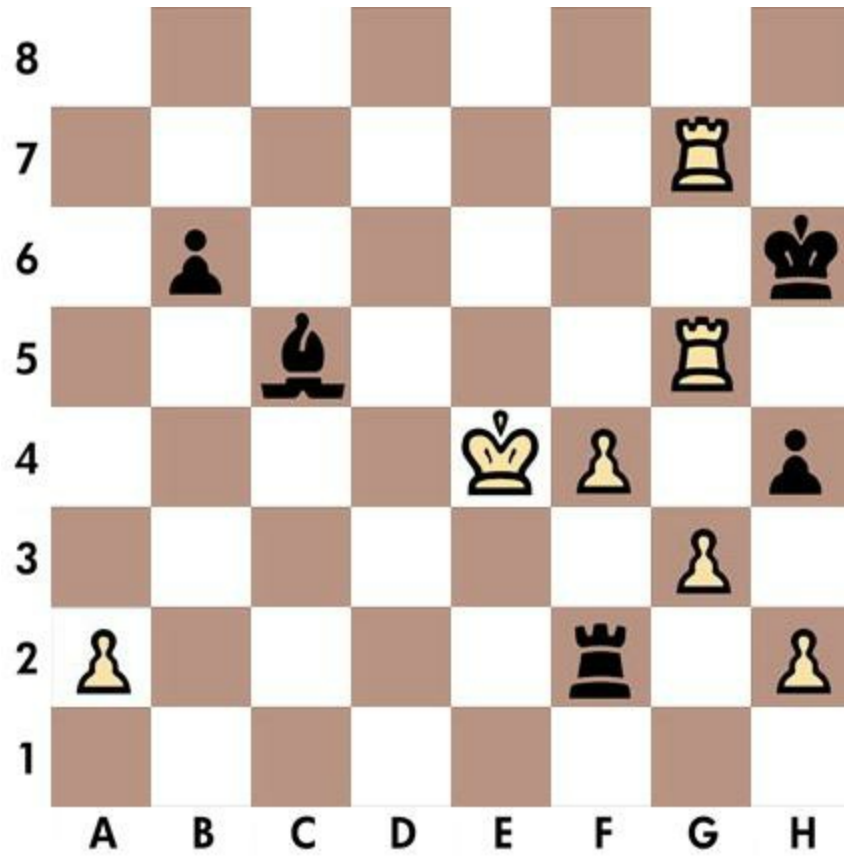


Solution n.86



1. Qh6 Kf5 2. g4

Solution n.87



1. R5g6 Kh5 2. g4

Quiz n.88 - White to move



Solution n.88

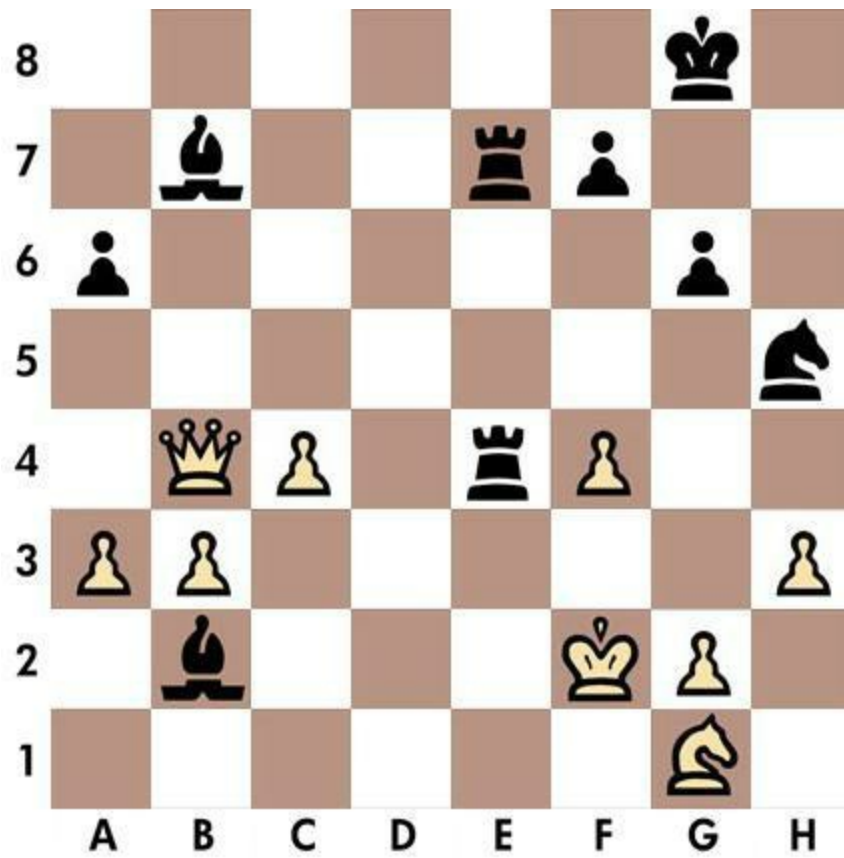


1. Qg3 Bxf3 2. Qh3

Quiz n.89 - Black to move

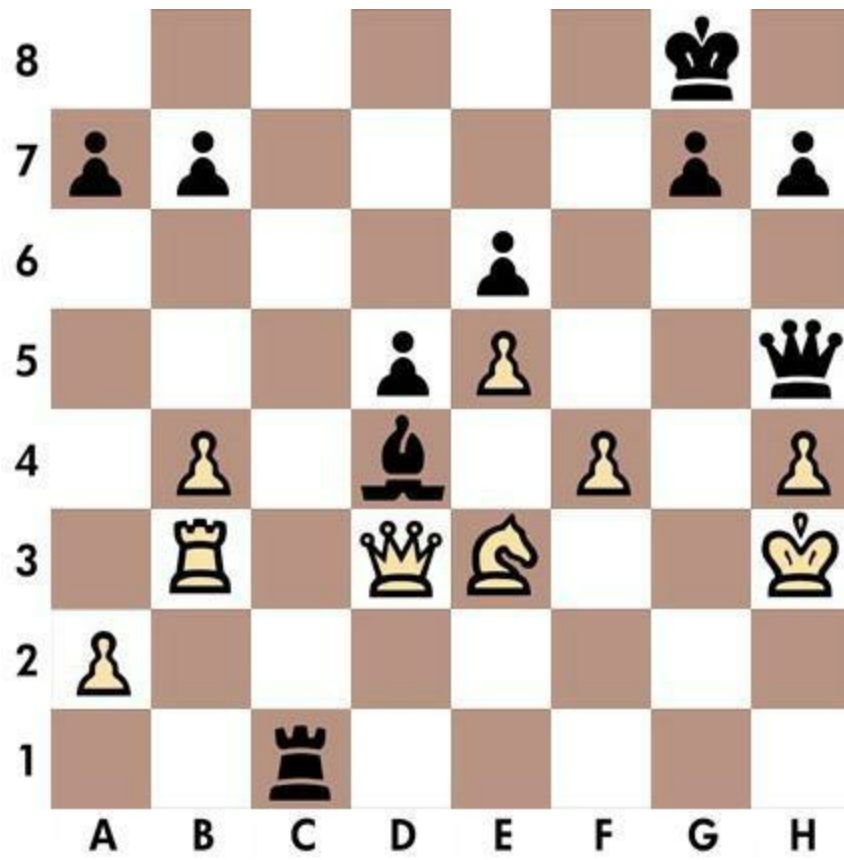


Solution n.89



1... Bd4 2. Kf1 Ng3

Quiz n.90 - Black to move



Solution n.90



1... Qf3 2. Kh2 Rh1

Chapter 10

Quizzes 91-100

A player surprised is half beaten.

Proverb

Quiz n.91 - White to move



Solution n.91



1. Qf5 Ke8 2. Qf7

Quiz n.92 - White to move

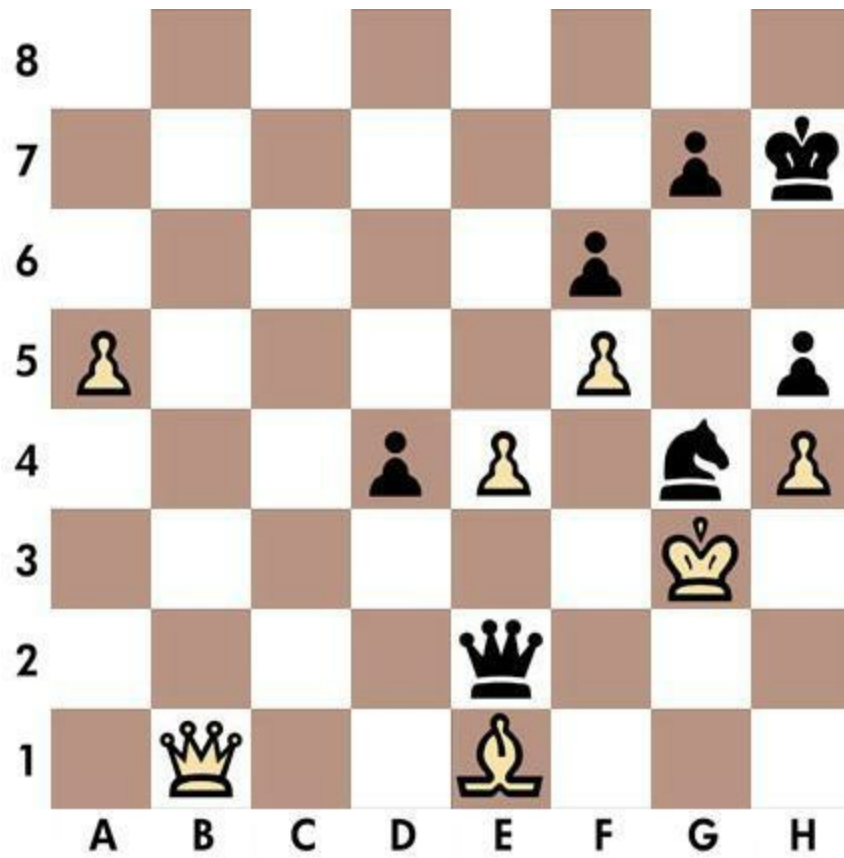


Solution n.92

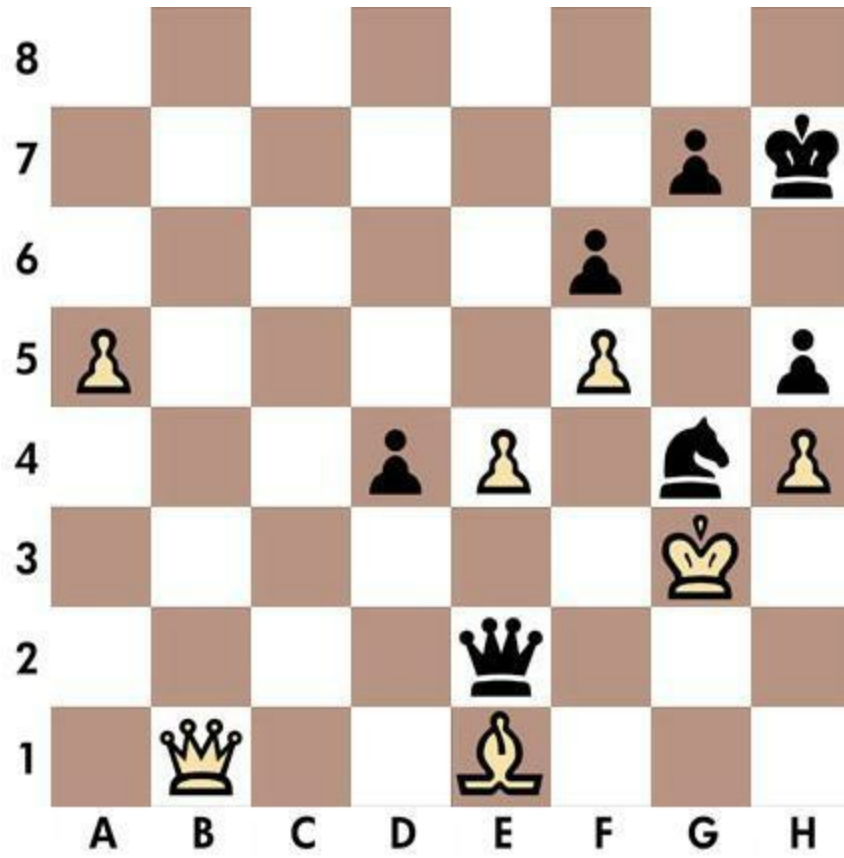


1. Be8 Nxe4 2. Bf7

Quiz n.93 - Black to move

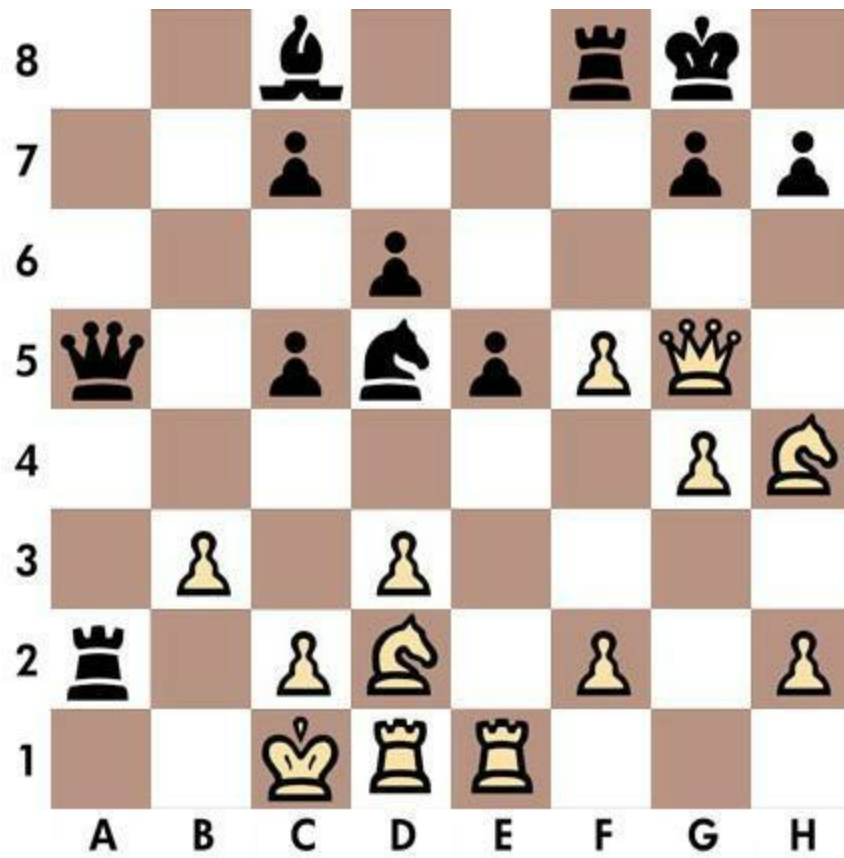


Solution n.93



1... Qh2 2. Kf3 Ne5

Quiz n.94 - Black to move

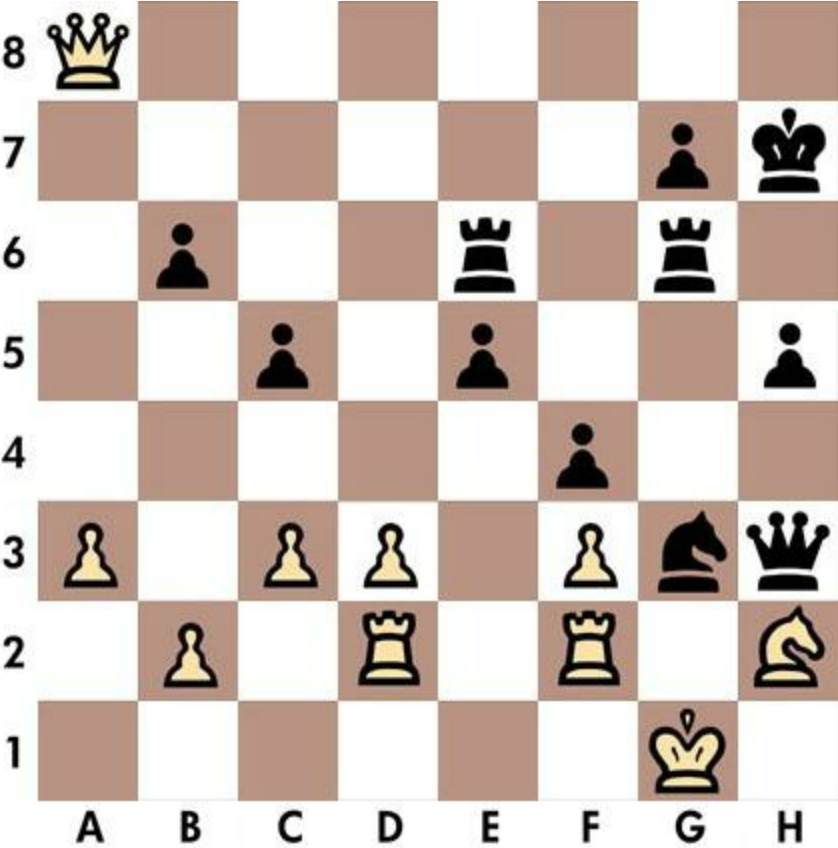


Solution n.94



1... Qa3 2. Kb1 Nc3

Quiz n.95 - Black to move



Solution n.95



1... Ne2 2. Kh1 Rg1

Quiz n.96 - White to move

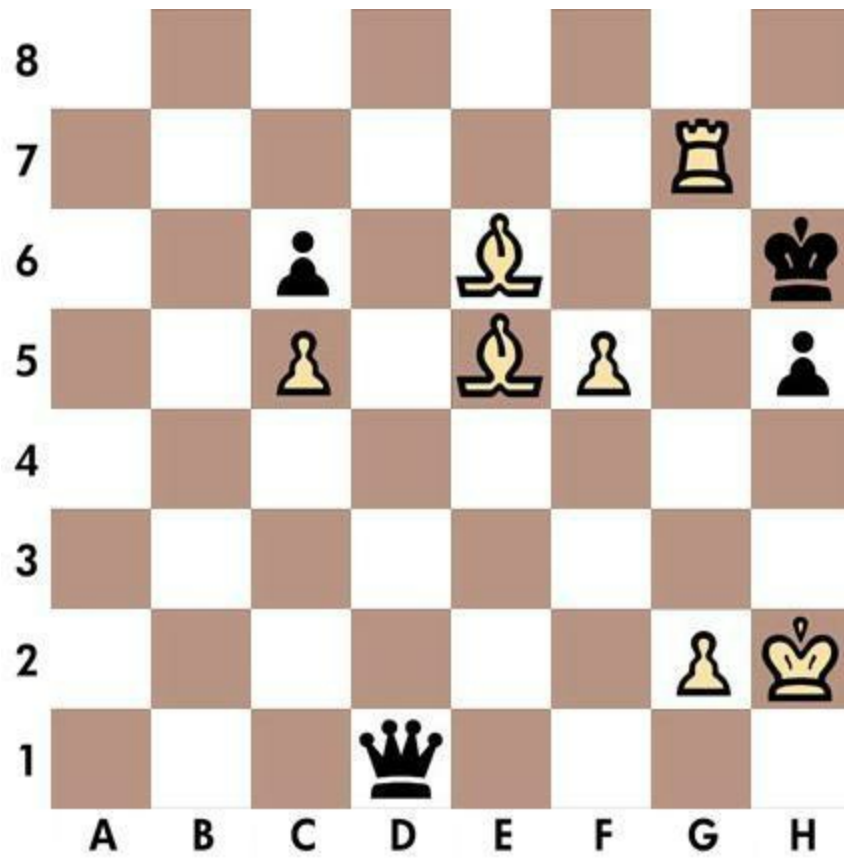


Solution n.96

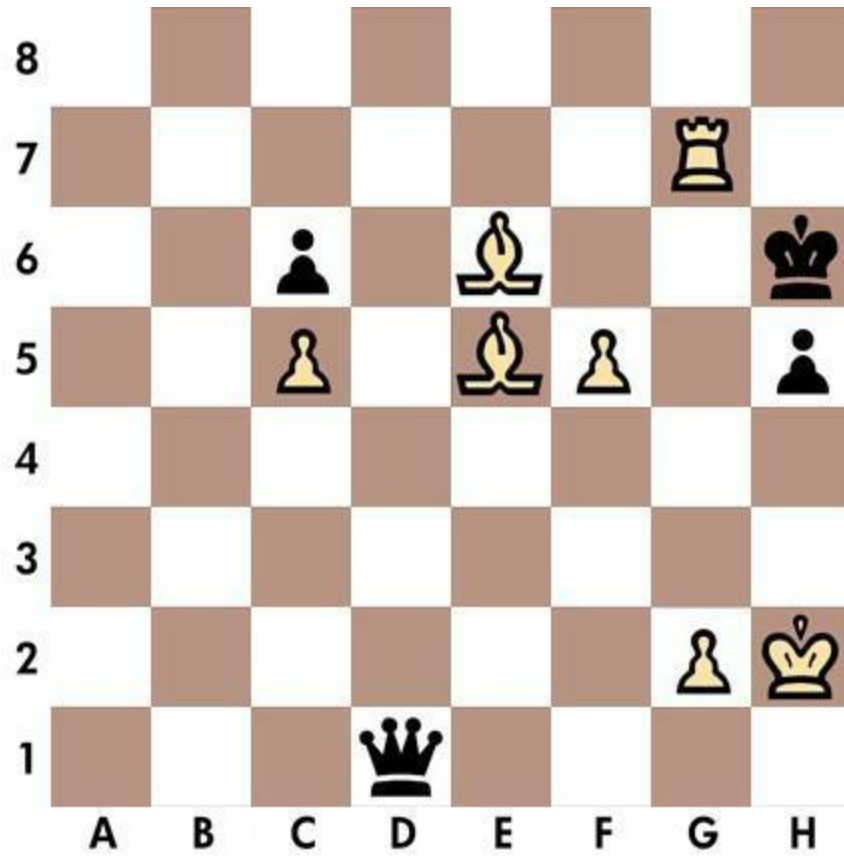


1. Qxd4 Kf5 2. g4

Quiz n.97 - White to move

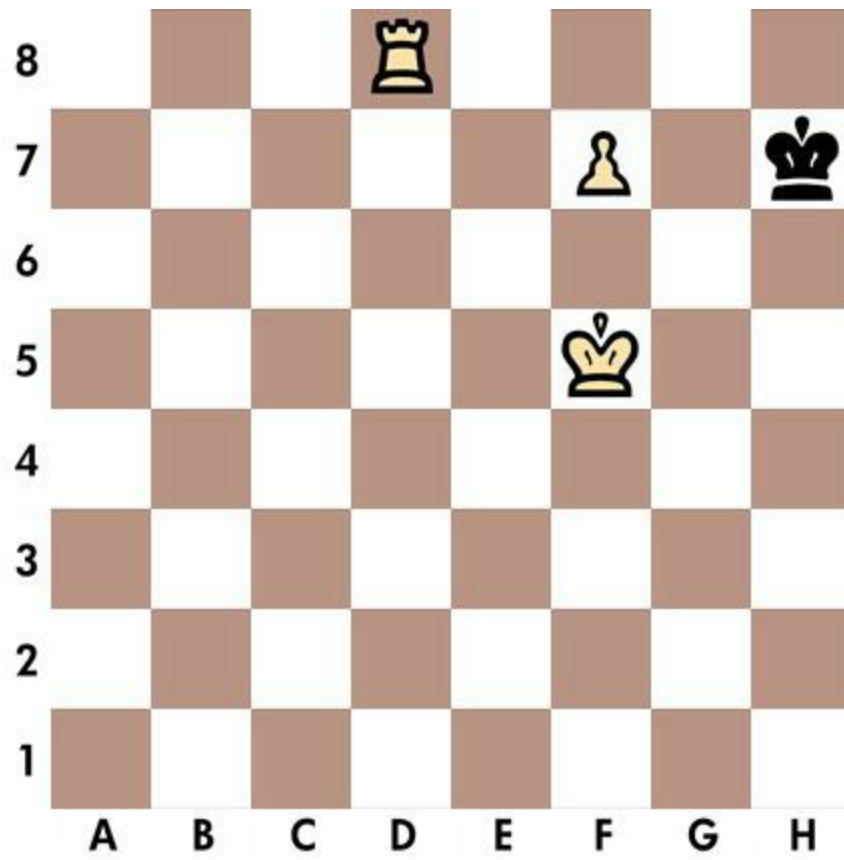


Solution n.97

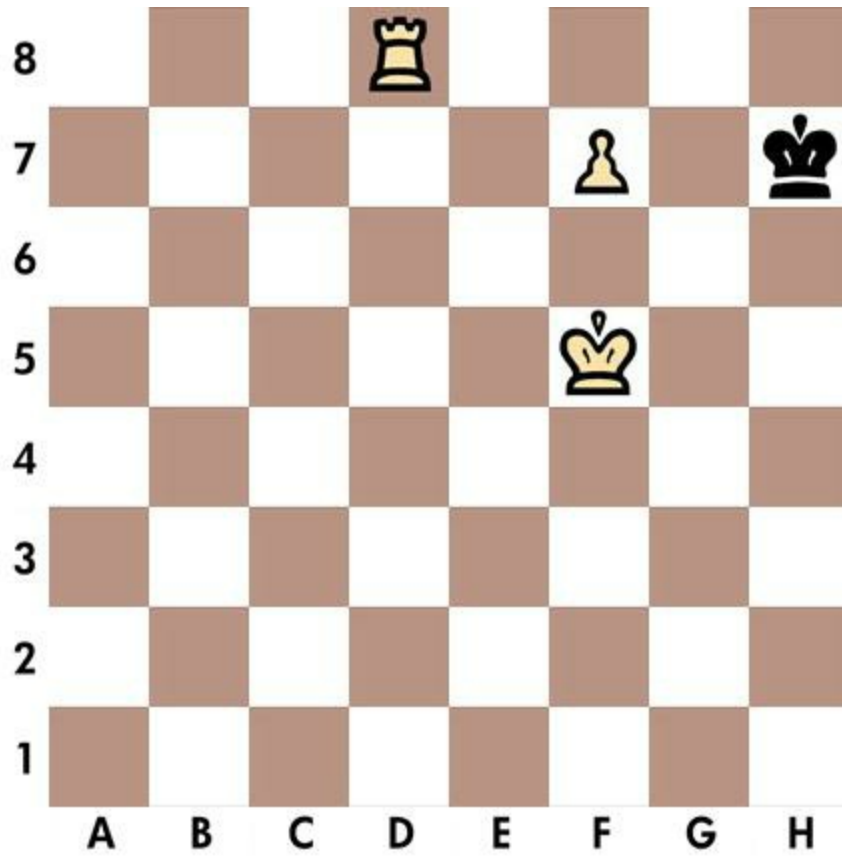


1. Rg6 Kh7 2. Bg8

Quiz n.98 - White to move



Solution n.98

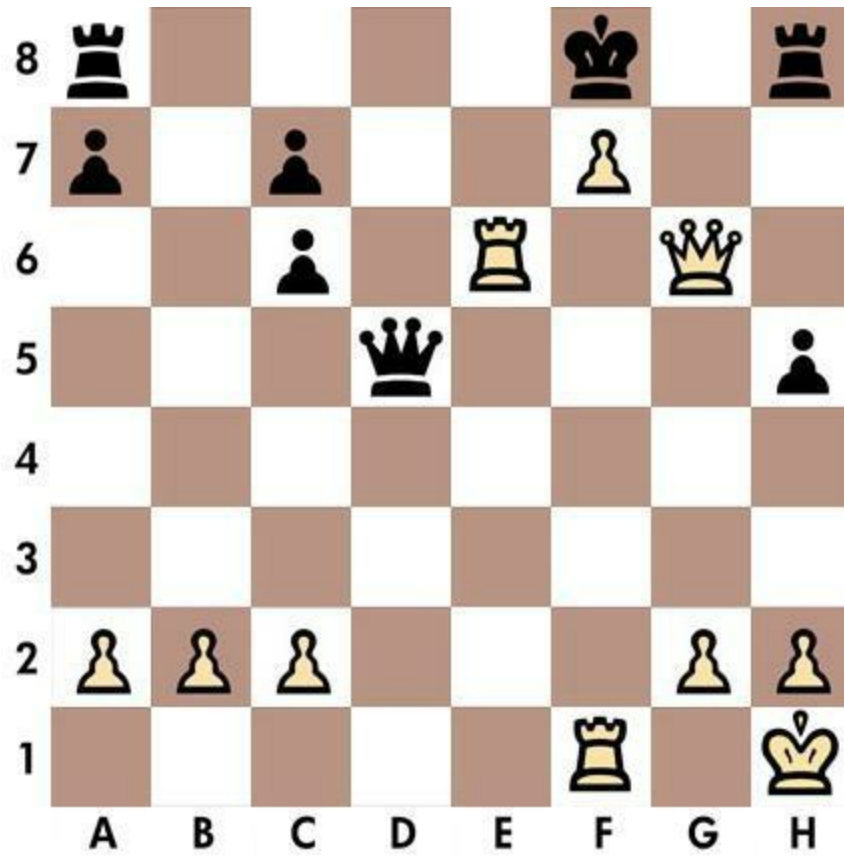


1. Kf6 Kh6 2. Rh8

Quiz n.99 - White to move



Solution n.99



1. Re8 Rxe8 2. fxe8=Q

Quiz n.100 - White to move



Solution n.100



1. Rh1 Kg6 2. f5

Epilogue

When the chess game is over, the pawn and the king go back to the same box.

Irish proverb

www.chesstrainer.org