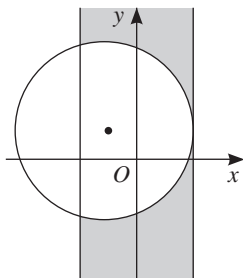
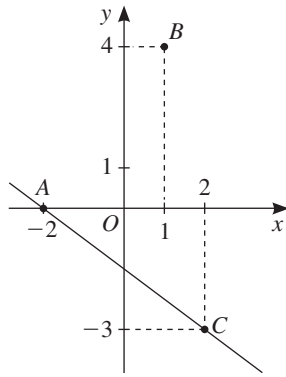


FICHA DE AVALIAÇÃO 5 **Geometria analítica****Grupo I****1** B**2** A**3** 3.1 D

3.2 B

Grupo II**1** $|x| \leq 2 \wedge (x + 1)^2 + (y - 1)^2 \geq 9$ 

2 2.1



2.2 $y = \frac{1}{7}x + \frac{2}{7}$

O ponto A pertence à mediatriz de $[BC]$.

2.3 Triângulo isósceles.

2.4 $(x - 2)^2 + (y + 3)^2 = 50$

3 3.1 a) BV e CE , por exemplo.b) AGF e BCE .c) A reta GF .3.2 $A(6, -3, 6); B(6, -3, 0); C(6, 3, 0); E(0, 3, 0); H(0, -3, 0); G(0, -3, 6)$ e $V(3, 0, 9)$ 3.3 a) $y = 3$; b) $x = 6 \wedge y = -3$; c) $-6x + 6y + 18z = 45$; d) $(x - 3)^2 + y^2 + (z - 9)^2 \leq 9$

3.4 $V = 104$