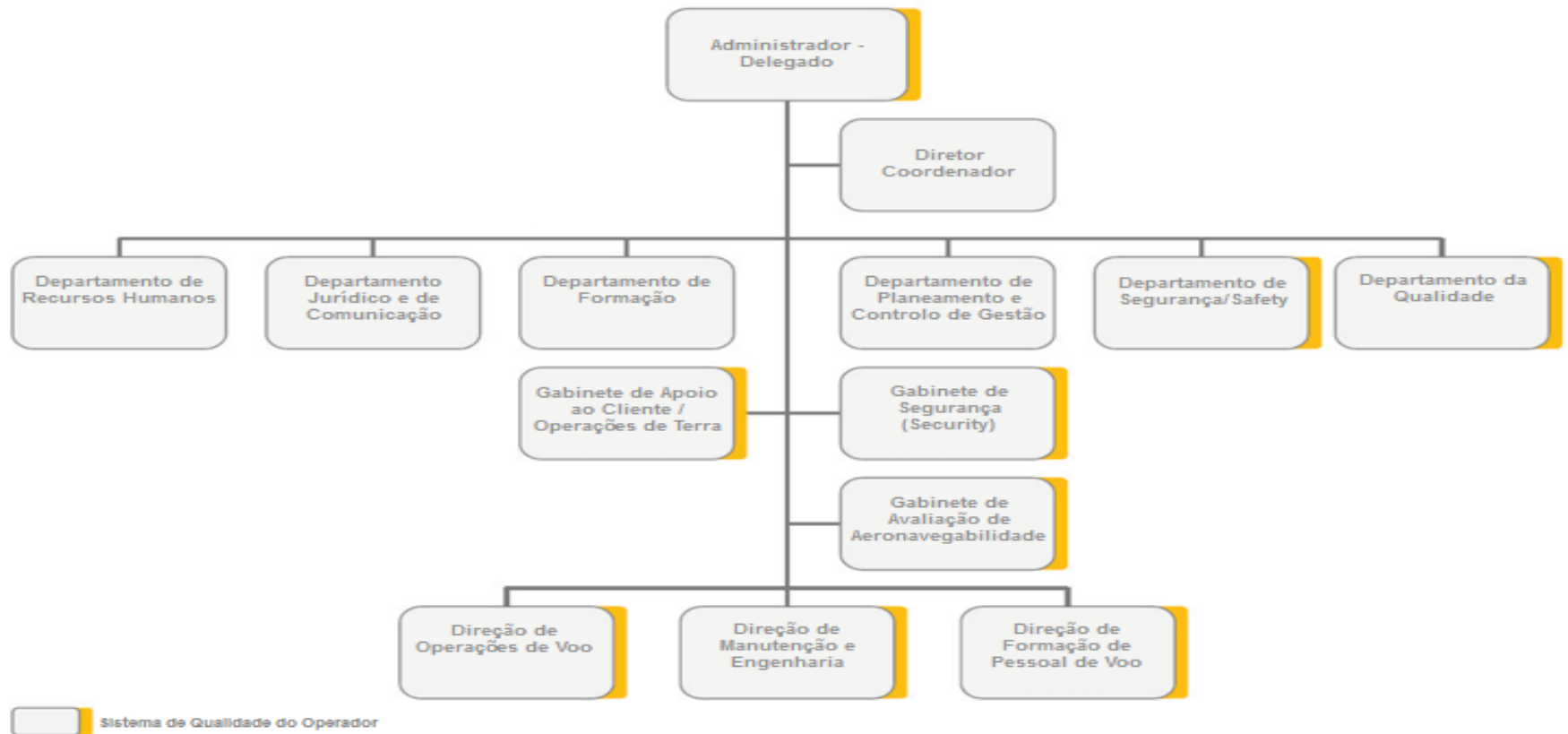
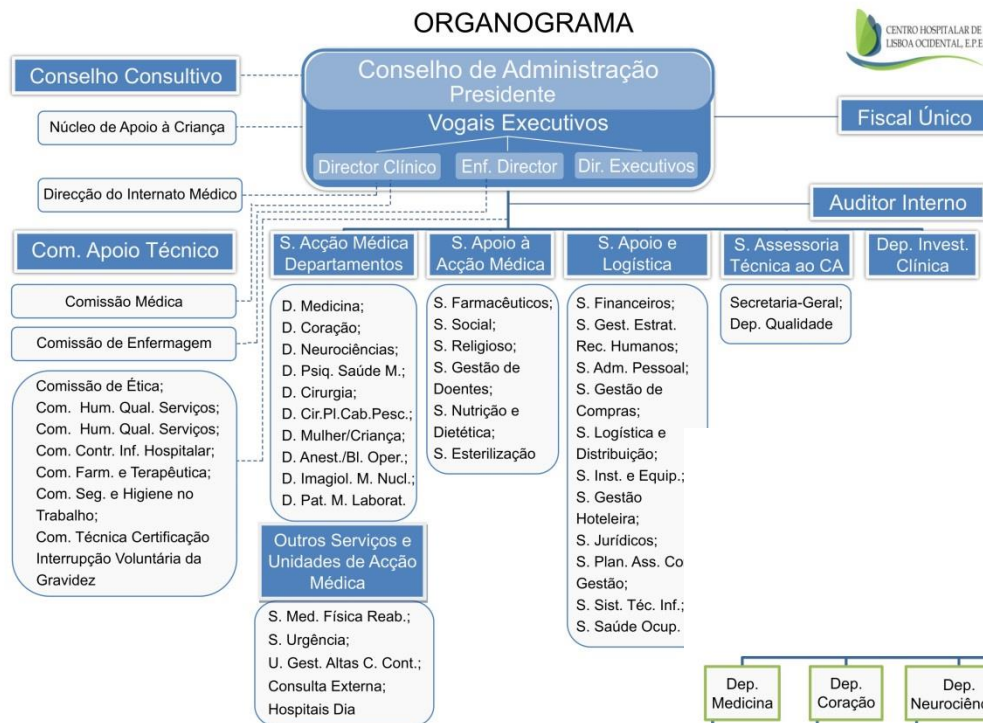


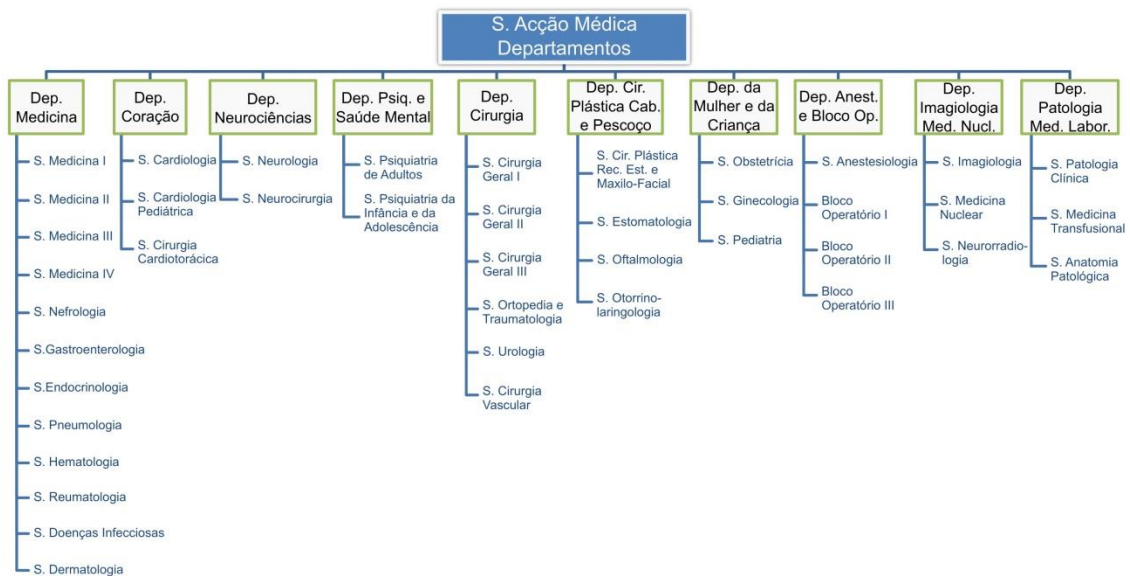
# Organograma PGA- Portugália Airlines



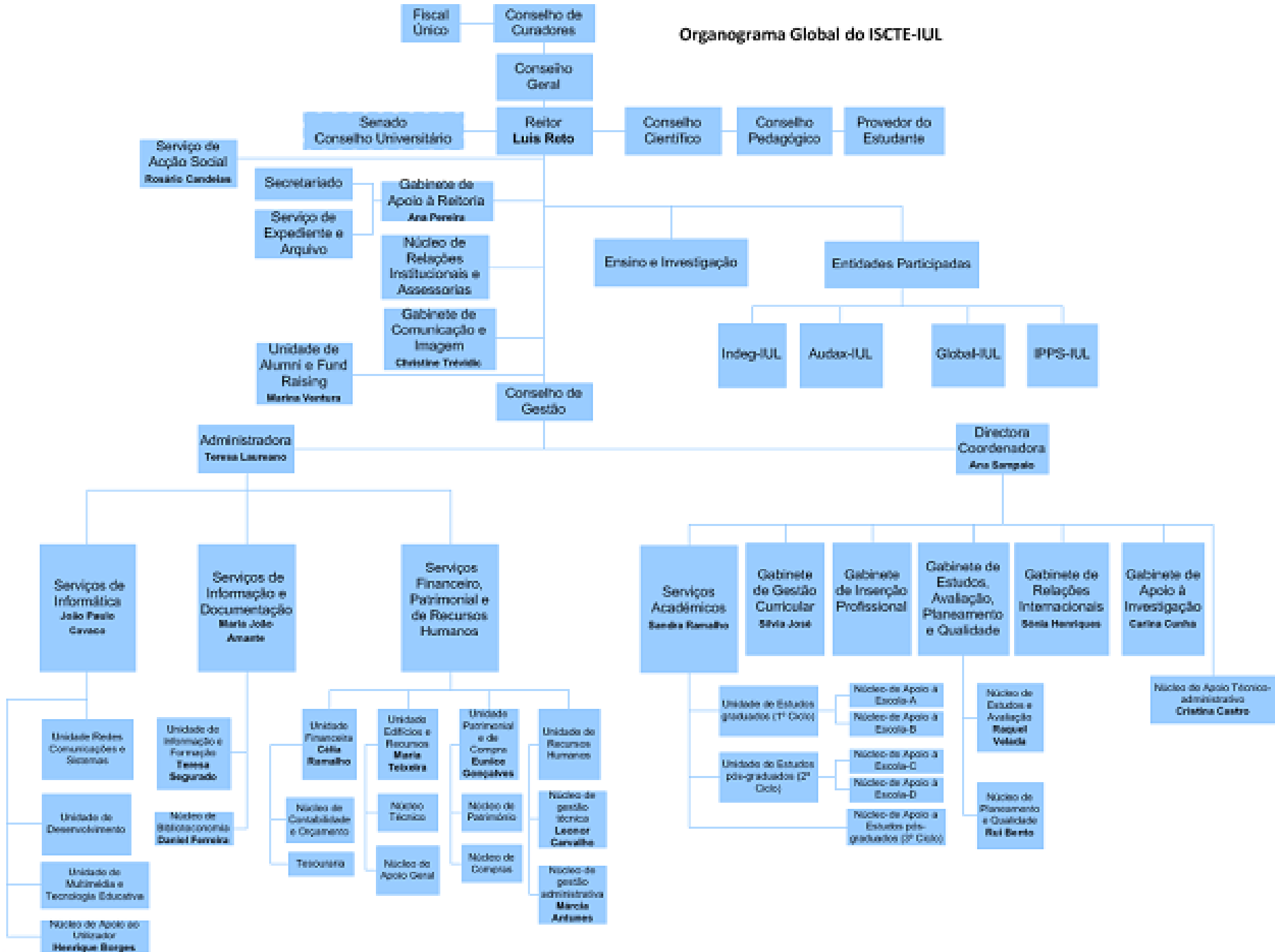


# Organograma do HOSPITAL DE SANTA MARIA

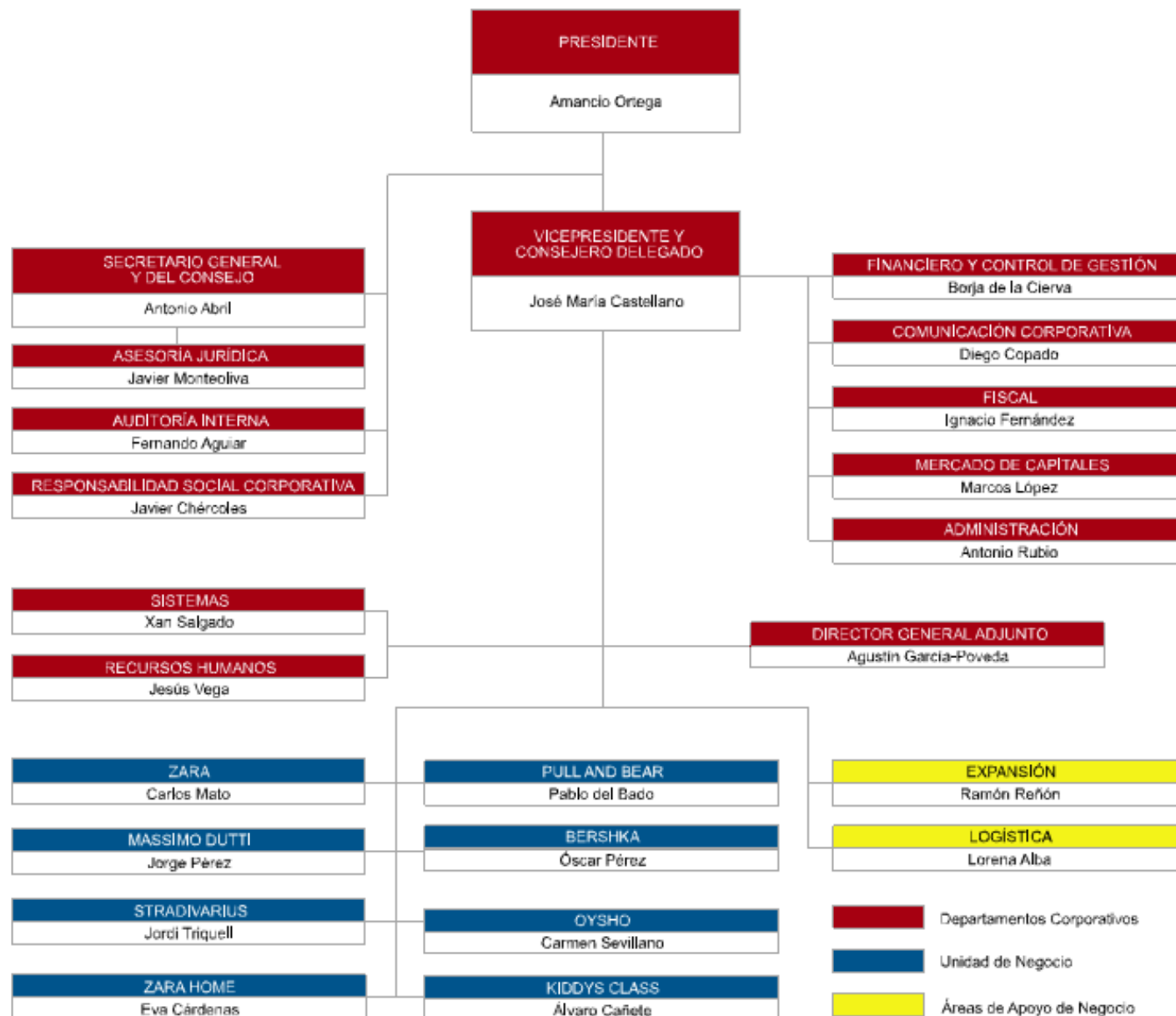
## ORGANOGRAMA (Continuação)



# Organograma Global do ISCTE-IUL



# Organograma INDITEX

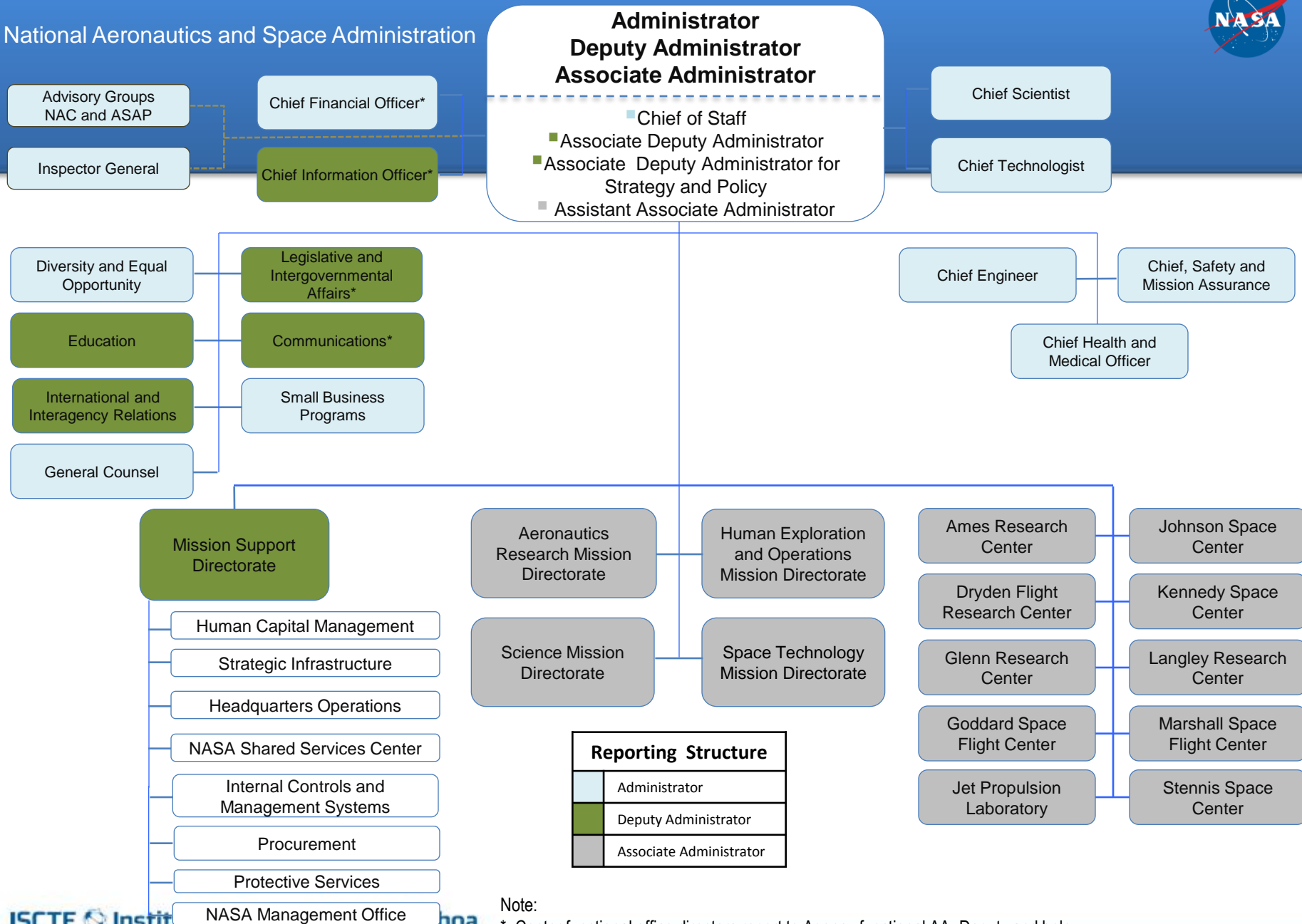


# Organograma MODELO CONTINENTE, S.G.P.S., S.A





# National Aeronautics and Space Administration



Note:

\* Center functional office directors report to Agency functional AA. Deputy and below report to Center leadership.