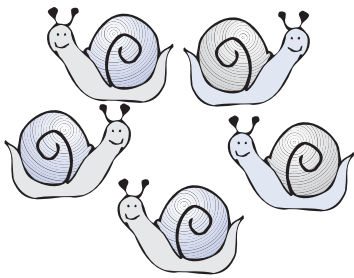


Os números até 5

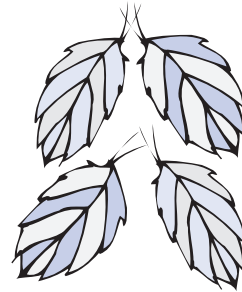
- Observar os sinais > (maior), = (igual) e < (menor).



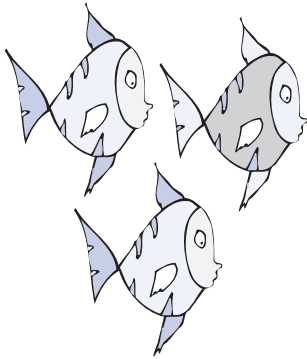
- Circundar o conjunto que tem mais elementos.



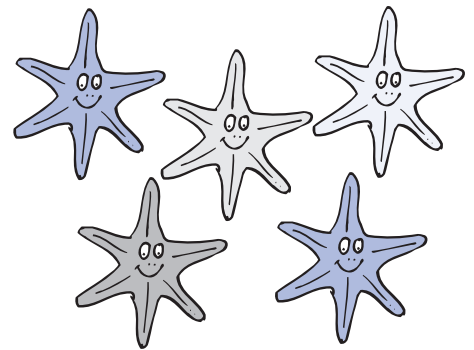
$$5 > 4$$



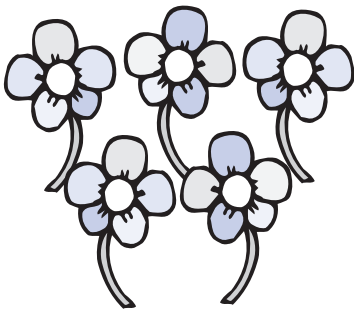
- Circundar o conjunto que tem menos elementos. Completar.



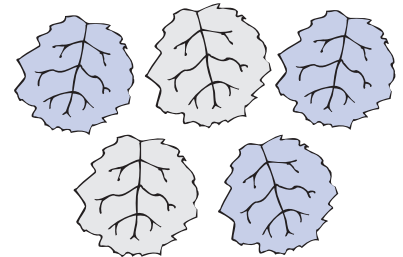
$$3 < \square$$



- Circundar os conjuntos que têm o mesmo número de elementos. Completar.



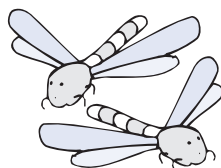
$$5 = \square$$



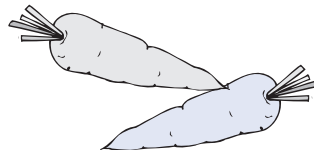
- Completar com >, = ou <.



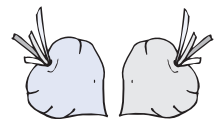
$$4 \quad \square$$



$$2$$



$$2 \quad \square$$



$$2$$