

5ªA	2	3	4	5
L. Portuguesa	14,29%	78,57%	7,14%	-
Inglês	35,71%	28,57%	35,71%	-
H.G.P.	7,14%	28,57%	50,00%	14,29%
Matemática	21,43%	50,00%	28,57%	-
C. Natureza	7,14%	42,86%	42,86%	7,14%
F Artística	-	64,29%	28,57%	7,14%
E. Musical	-	35,71%	50,00%	14,29%
TIC	-	42,86%	57,14%	-
E. Física	-	14,29%	57,14%	28,57%
E.M.R.C.	-	35,71%	35,71%	28,57%
Total	8,57%	42,14%	39,29%	10,00%

5ªB	2	3	4	5
L. Portuguesa	21,05%	36,84%	31,58%	10,53%
Inglês	47,37%	21,05%	21,05%	10,53%
H.G.P.	10,53%	36,84%	5,26%	47,37%
Matemática	26,32%	42,11%	5,26%	26,32%
C. Natureza	10,53%	47,37%	0,00%	42,11%
EVT	0,00%	63,16%	31,58%	5,26%
E. Física	0,00%	31,58%	52,63%	15,79%
E. Musical	0,00%	47,37%	26,32%	26,32%
E.M.R.C.	0,00%	40,00%	33,33%	26,67%
Total	13,17%	40,72%	22,75%	23,35%

5ªC	2	3	4	5
L. Portuguesa	18,75%	56,25%	18,75%	6,25%
Inglês	31,25%	31,25%	25,00%	12,50%
H.G.P.	18,75%	50,00%	25,00%	6,25%
Matemática	6,25%	50,00%	37,50%	6,25%
C. Natureza	12,50%	50,00%	12,50%	25,00%
EVT	12,50%	68,75%	12,50%	6,25%
E. Física	-	50,00%	31,25%	18,75%
E. Musical	-	25,00%	31,25%	43,75%
E.M.R.C.	-	54,55%	18,18%	27,27%
Total	11,51%	48,20%	23,74%	16,55%

5ªD	2	3	4	5
L. Portuguesa	5,88%	41,18%	41,18%	11,76%
Inglês	17,65%	29,41%	11,76%	41,18%
H.G.P.	-	29,41%	17,65%	52,94%
Matemática	-	52,94%	29,41%	17,65%
C. Natureza	11,76%	41,18%	35,29%	11,76%
EVT	-	58,82%	29,41%	11,76%
E. Física	-	-	58,82%	41,18%
E. Musical	-	5,88%	64,71%	29,41%
E.M.R.C.	-	-	52,94%	47,06%
Total	3,92%	28,76%	37,91%	29,41%

5ªE	2	3	4	5
L. Portuguesa	6,25%	37,50%	37,50%	18,75%
Inglês	6,25%	37,50%	31,25%	25,00%
H.G.P.	6,25%	31,25%	37,50%	25,00%
Matemática	6,25%	37,50%	37,50%	18,75%
C. Natureza	6,25%	50,00%	31,25%	12,50%
EVT	-	25,00%	68,75%	6,25%
E. Física	-	31,25%	31,25%	37,50%
E. Musical	-	18,75%	50,00%	31,25%
E.M.R.C.	-	12,50%	18,75%	68,75%
Total	3,47%	31,25%	38,19%	27,08%

6ªA	2	3	4	5
L. Portuguesa	-	83,33%	16,67%	-
Inglês	11,11%	66,67%	11,11%	11,11%
H.G.P.	-	61,11%	22,22%	16,67%
Matemática	5,56%	72,22%	16,67%	5,56%
C. Natureza	-	61,11%	27,78%	11,11%
EVT	-	61,11%	22,22%	16,67%
E. Física	-	33,33%	50,00%	16,67%
E. Musical	-	33,33%	50,00%	16,67%
E.M.R.C.	-	18,75%	43,75%	37,50%
Total	1,88%	55,00%	28,75%	14,38%

6ªB	2	3	4	5
L. Portuguesa	4,76%	66,67%	14,29%	14,29%
Inglês	28,57%	38,10%	23,81%	9,52%
H.G.P.	-	57,14%	4,76%	38,10%
Matemática	14,29%	47,62%	23,81%	14,29%
C. Natureza	-	57,14%	23,81%	19,05%
EVT	-	66,67%	14,29%	19,05%
E. Física	-	28,57%	42,86%	28,57%
E. Musical	-	33,33%	23,81%	42,86%
E.M.R.C.	-	28,57%	28,57%	42,86%
Total	5,29%	47,09%	22,22%	25,40%

6ªC	2	3	4	5
L. Portuguesa	-	61,11%	33,33%	5,56%
Inglês	5,56%	55,56%	38,89%	-
H.G.P.	-	27,78%	22,22%	50,00%
Matemática	11,11%	50,00%	16,67%	22,22%
C. Natureza	-	50,00%	33,33%	16,67%
EVT	-	61,11%	33,33%	5,56%
E. Física	-	-	38,89%	61,11%
E. Musical	-	33,33%	27,78%	38,89%
E.M.R.C.	-	-	62,50%	37,50%
Total	1,88%	38,13%	33,75%	26,25%

6ªD	2	3	4	5
L. Portuguesa	-	60,00%	30,00%	10,00%
Inglês	25,00%	25,00%	35,00%	15,00%
H.G.P.	-	60,00%	20,00%	20,00%
Matemática	5,00%	40,00%	25,00%	30,00%
C. Natureza	-	45,00%	25,00%	30,00%
EVT	5,00%	40,00%	40,00%	15,00%
E. Física	-	30,00%	45,00%	25,00%
E. Musical	-	20,00%	45,00%	35,00%
E.M.R.C.	-	-	47,06%	52,94%
Total	3,95%	36,16%	34,46%	25,42%

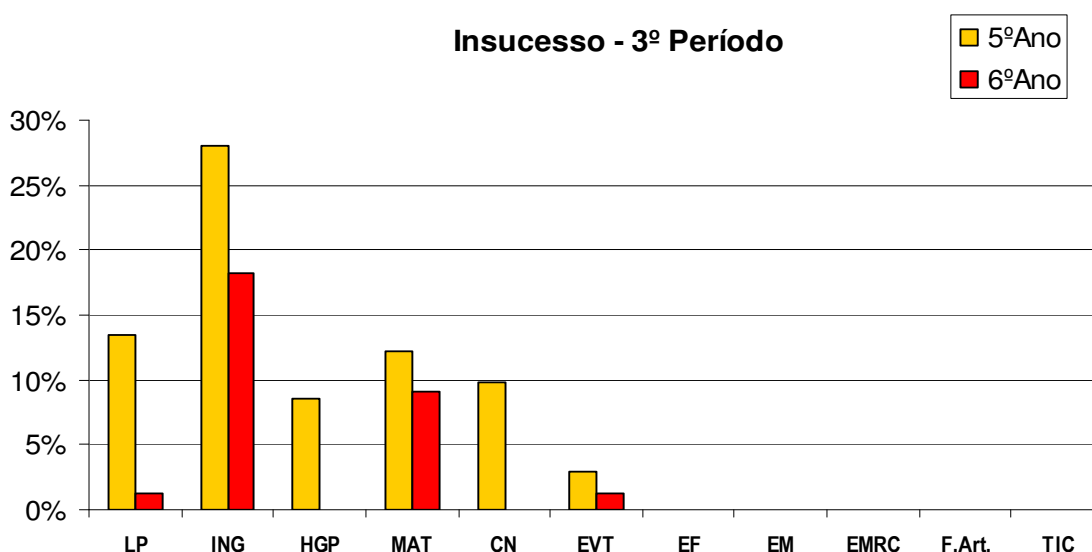


## AVALIAÇÃO POR DISCIPLINA

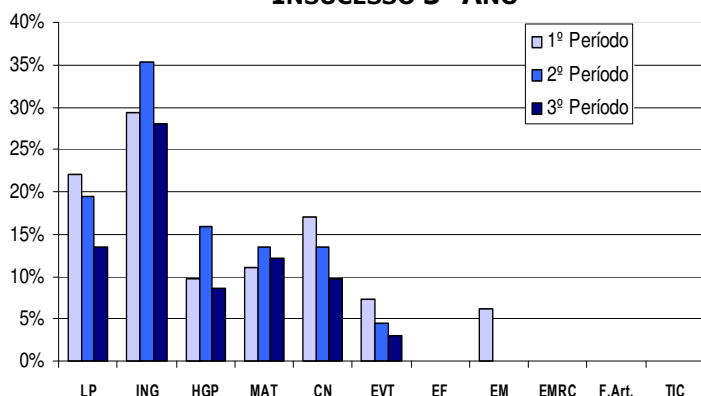
5ºANO	2	3	4	5
L. PORTUGUESA	13,41%	48,78%	28,05%	9,76%
INGLÊS	28,05%	29,27%	24,39%	18,29%
H.G.P.	8,54%	35,37%	25,61%	30,49%
MATEMÁTICA	12,20%	46,34%	26,83%	14,63%
C. NATUREZA	9,76%	46,34%	23,17%	20,73%
E.V.T.	2,94%	54,41%	35,29%	7,35%
E. FÍSICA	-	25,61%	46,34%	28,05%
E. MUSICAL	-	26,83%	43,90%	29,27%
E.M.R.C.	-	26,03%	32,88%	41,10%
F. ARTÍSTICA	-	64,29%	28,57%	7,14%
T.I.C.	-	42,86%	57,14%	-
<b>TOTAL</b>	6,81%	40,56%	33,83%	18,80%

6ºANO	2	3	4	5
L. PORTUGUESA	1,30%	67,53%	23,38%	7,79%
INGLÊS	18,18%	45,45%	27,27%	9,09%
H.G.P.	-	51,95%	16,88%	31,17%
MATEMÁTICA	9,09%	51,95%	20,78%	18,18%
C. NATUREZA	-	53,25%	27,27%	19,48%
E.V.T.	1,30%	57,14%	27,27%	14,29%
E. FÍSICA	-	23,38%	44,16%	32,47%
E. MUSICAL	-	29,87%	36,36%	33,77%
E.M.R.C.	-	12,86%	44,29%	42,86%
<b>TOTAL</b>	3,32%	43,71%	29,74%	23,23%

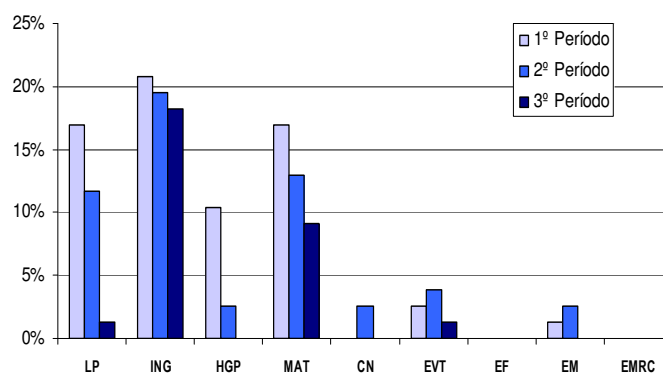
### Insucesso - 3º Período



### INSUCESSO 5º ANO



### INSUCESSO 6º ANO



## RETENÇÕES

(alunos com três níveis inferiores a 3 ou nível inferior a 3 a L.P. e Matemática)

	Nº de alunos	percentagem	Insucesso total 2º Ciclo
5ºAno	8	9,76%	<b>5,03%</b>
6ºAno	0	0%	