



FUSEHOLDERS FOR FERRULE STYLE FUSES

20.6 x 190
36 x 190
36 x 250
36 x 400

- STURDY ASSEMBLY
WITH A VERY HIGH COLLISION WITHSTANDING
- MOUNTING AS BASE
WITH OR WITHOUT MICROSWITCH
- POLYESTER-MADE ISOLATORS
FOR ALL APPLICATIONS



MAIN CHARACTERISTICS

Code	Thermal current rating (I _{th})*	Insulation voltage U _i (AC 50/60 Hz & DC) (According to VDE 0110 : 565 - C group)	Dielectric withstand test		Fire and fumes class
			RMS voltage 1 mn 50/60 Hz	Impulse voltage 1.2/50µs	
SI 85 - 20 - 190 SI 85 - 20 - 190 + MC 2R 1 - 5	50 A	7 200 V	27 kV phase-ground	60 kV phase-ground	F ₁ M ₂ NF 16102
SI 85 - 36 - 190 TRAC SI 85 - 36 - 190 + MC 2R 1 - 5	100 A	7 200 V			
SI 85 - 36 - 250	50 A	7 200 V	9 kV phase-microswitch		UL 94 VO
SI 85 - 36 - 400 TRAC	20 A	7 200 V			

Nota : "TRAC" in code means that this type of fuseholder is usable for rolling stock with a reinforced fixing of clips on isolators.

* No use limitation for FERRAZ fuses mounted in the above holders.

Vibrations withstanding :

Tests with sine vibrations carried out at ambient with scanning each of the three main axis of the holder.

Spectrum : 1st segment (2 to 16 Hz) constant trip x = 5 mm peak.

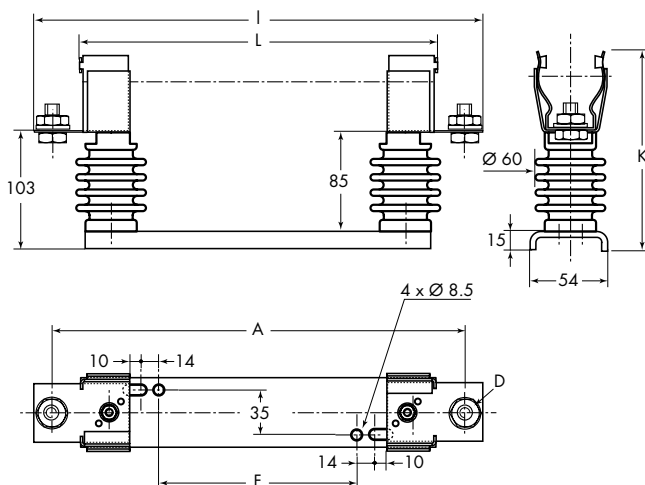
2nd segment (16 to 250 Hz) constant acceleration γ = 5 g peak.

Exponential scanning speed : 1 octave per minute.

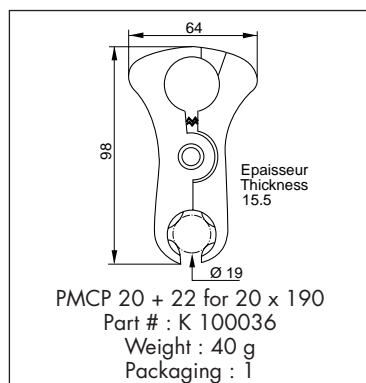
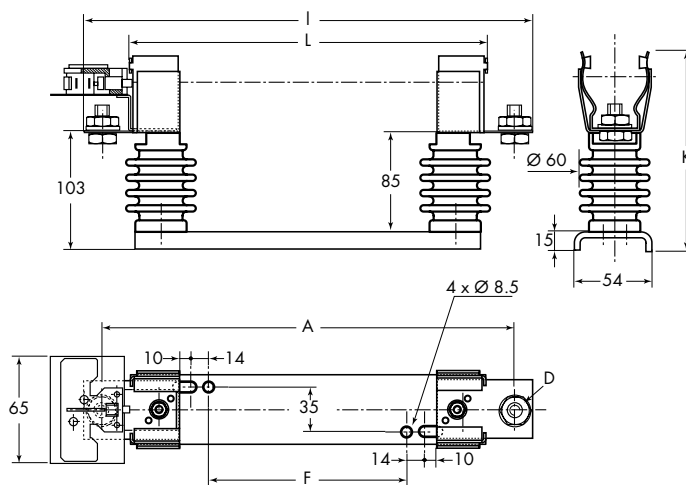
Duration : 2 hours per axis.

FUSEHOLDER AND ACCESSORY

Without microswitch



With microswitch



Code	Part #	Weight (g)	Packg.	Dimensions					
SI 85 20 x 190	Y 092665	950	1	I 241	L 192	A 223	F 73	D 6.5	131
SI 85 20 x 190 + MC 1-5	B 220525	1 050	1	I 288	L 192	A 223	F 73	D 6.5	
SI 85 36 x 190 TRAC	C 092738	1 080	1	I 250	L 194	A 228	F 73	D 8.5	150.5
SI 85 36 x 190 + MC 2R1-5	B 220617	1 180	1	I 299	L 194	A 228	F 73	D 8.5	
SI 85 36 x 250	P 092864	1 170	1	I 316	L 260	A 294	F 139	D 8.5	
SI 85 36 x 400 TRAC	D 092831	1 400	1	I 455	L 399	A 433	F 266	D 8.5	

* Electrical connection of fuseholder and wires by screws made in plated steel 8-8 class (supplied with fuseholder).

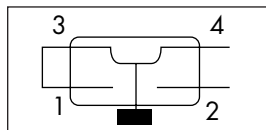
maximum tightening torque advised : $22 \pm \frac{0}{8}$ Nm for M8 screw. (SI 85 36x ...)

9 ± 2 Nm for M6 screw. (SI 85 20x ...)

- Fixing of base with M8 screws. Tightening torque 10 ± 2 Nm.

MICROSWITCH CHARACTERISTICS

Microswitch current rating	Interrupting rating Non inductive circuit
10 A - 50 Hz	7 A - 250 V
10 A - DC	10 A - 30 V
	2,2 A - 110 V
Positive operating voltage/current : 20 V - 100 mA 6.35 mm slip on connectors tags	



- With hand-made resetting reversing style microswitch
- 10A - 250V ~ with $\cos \varphi = 0.3$
- # 1 and 3 terminals must always be connected

Each microswitch weighs less than 100g, therefore no fumes and smokes grade is required by NF 16102 standard

FERRAZ

28, rue Saint Philippe
B.P. 3025 - 69391 Lyon Cedex 03-France
Tél. 33 (0)4 72 22 66 11
Fax. 33 (0)4 72 22 67 13

Rue de Vaucanson
69720 Saint-Bonnet de Mure - France
Tél. 33 (0)4 72 22 66 11
Fax. 33 (0)4 72 22 66 12

N° Identification CEE : FR 429 555 11 217

Publication : P600520-12/97
CP3P2/3P 32053GB
RA 0355A