

Flanged Cable Entries

Type of Explosion Protection:

 I M2 EEx e I

Degree of Enclosure Protection:

IP 67

EC-Type Examination Certificate:

IBExU 03 ATEX 1029



Use

BöSha-Flanged Cable Entries serve for leading in of armoured cables or armoured leads.

They are intended for attachment to connection compartments of electrical apparatus having type of explosion protection EEx e I (protection against firedamp).

In the cast brass casing which has a lead-in bell-mouth are fitted an adapter collar with external O-ring, a sealing ring, a contact ring and a compression member. The contact ring and the compression member are fixed to the adapter collar with four screws.

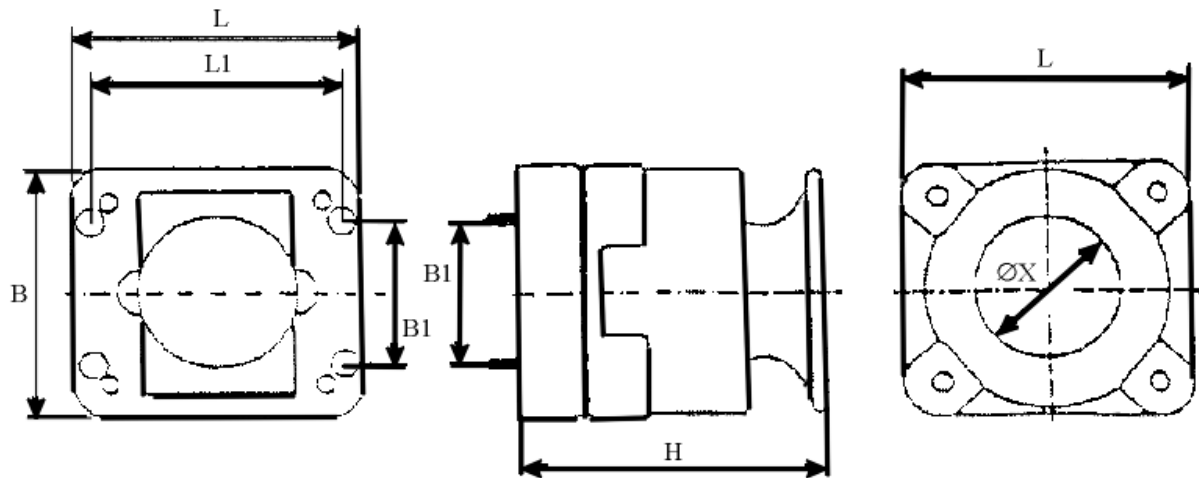
After interposing a rubber gasket, using four hexagon socket head cap screws, the casing is mounted on a fixing plate, the internal components being locked to prevent rotation.

For the purpose of relieving the strain on the conductor ends the armouring of the cable is firmly clamped between the rib of the contact ring and the groove of the adapter collar. The contact ring incorporates a protective ground conductor H 07 V-K.

The fixing plate is mounted on the wall of the connection compartment after interposing a rubber gasket, using four hexagon socket head cap screws that are closed off with tapped blind holes.

The protective shrouds of the casing are designed to accommodate hexagon socket head cap screws and are provided with throughholes.

Technical Drawing and Data



Article No.	Mounting Dimensions L1 x B1 in mm	Ø Cable / Lead from - to in mm	Flange Dimensions L x B in mm	Height H in mm	Cross Section of Protective Ground Conductor
BS 11 a	112 x 65 M 8	30 - 35	130 x 115	130	16 mm ² 400 mm long
BS 11 b		35 - 40			
BS 11 c		40 - 45			
BS 11 d		45 - 53			
BS 12 a	112 x 65 M 8	35 - 40	162 x 130	140	50 mm ² 700 mm long
BS 12 b		40 - 45			
BS 12 c		45 - 50			
BS 12 d		50 - 55			
BS 12 e		55 - 60			
BS 12 f		60 - 68			
BS 13 a	112 x 65 M 8 + 112 x 85 M 10	55 - 60	183 x 140	143	50 mm ² 700 mm long
BS 13 b		60 - 65			
BS 13 c		65 - 70			
BS 13 d		70 - 75			
BS 13 e		75 - 80			
BS 13 f		80 - 84			