



ENVIRO-TEC® MODEL VF FAN COIL UNIT

ARCHITECTURALLY
PREFERRED
APPLICATION FLEXIBILITY
QUIET COMFORT
EASILY SERVICED



ENVIRO-TEC® is a registered trademark of Environmental Technologies, Inc. Windows® is a registered trademark of Microsoft Corporation.

©1999 Environmental Technologies, Inc.
All rights reserved.

ENVIRONMENTAL TECHNOLOGIES, INC.
ENGINEERING FOR EXCELLENCE

6750 Bryan Dairy Rd. • Largo, FL 33777 • 727-541-3531 • Fax 727-545-1028
www.enviro-tec.com

SS-FCUVF

ENVIRO-TEC® RAISING THE STANDARD IN F

CONTRACTORS

ENVIRO-TEC® model VFE vertical exposed and VFC vertical concealed fan coil units provide maximum performance while reducing installed cost to the contractor. Ultra narrow profile design (maximum 10" deep and 25" high; up to 1250 CFM) allows installation virtually anywhere. Access to all components through the front panel with only a screw driver makes service easy.

DESIGNERS

The VF's modular construction and number of available sizes renders unparalleled flexibility. Available with chilled water or DX cooling, and hot water, steam or electric heating coils, ENVIRO-TEC® VF fan coils produce the ultimate in comfort and flexibility.

OWNERS

ARI 440 certification ensures exacting performance. Concerned about indoor air quality? Sloped, anti-microbial treated drain pans are standard features on VF Series fan coils. The drain pans and coils are easily removed for cleaning.

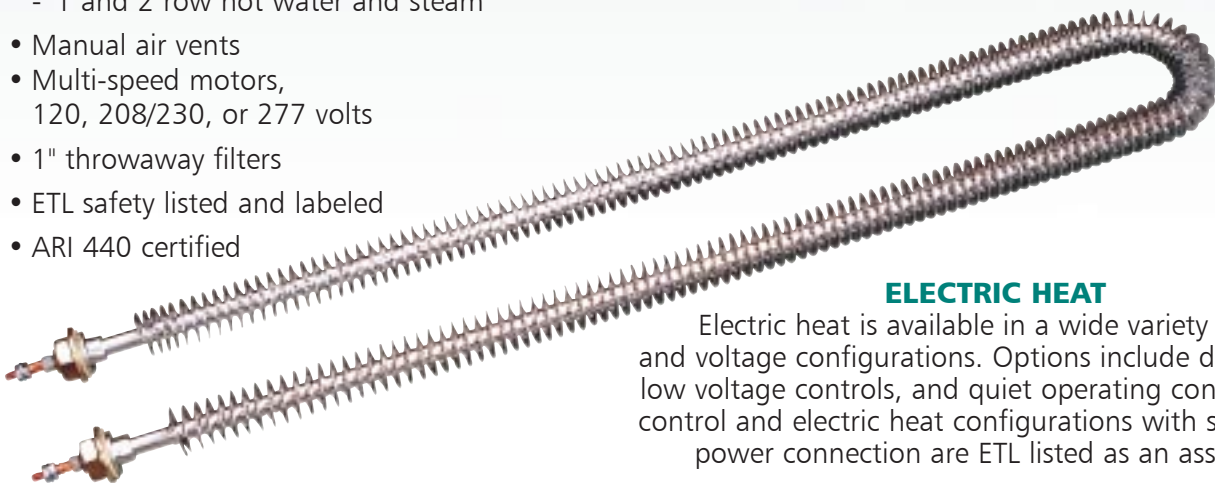


STANDARD FEATURES

- Narrow profile, 10" depth and 25" height for all sizes
- Heavy gauge G 60, chromate coated galvanized steel casing construction
- 18 gauge galvanized steel exterior cabinet construction
- Stamped louver discharge grille
- Durable powder coat paint finish; inside and outside
- 1/2" 4lb. dual-density fiberglass insulation
- Sloped drain pan, internally insulated
- 2 or 4 pipe configuration, heating coil in reheat position
 - 2, 3 or 4 row chilled water, or 3 or 4 row DX
 - 1 and 2 row hot water and steam
- Manual air vents
- Multi-speed motors, 120, 208/230, or 277 volts
- 1" throwaway filters
- ETL safety listed and labeled
- ARI 440 certified

OPTIONAL FEATURES

- Stainless steel drain pan
- Stainless steel coil casings
- Stainless steel auxiliary drain pan
- Factory pre-wired terminal strips for valve and thermostat connections
- 16 gauge front panel construction
- Foil faced insulation
- Auto air vents
- Double deflection discharge grille
- Return air bar grille
- 0 - 25% manual outside air damper



ELECTRIC HEAT

Electric heat is available in a wide variety of kW and voltage configurations. Options include disconnects, low voltage controls, and quiet operating contactors. All control and electric heat configurations with single point power connection are ETL listed as an assembly.

VF Fan Coils

LEXIBILITY AND PERFORMANCE



END POCKETS

The 8" end pockets allow for accessibility and service of optional factory piping packages and controls. End panels are removable to allow for even greater access.



FAN DECK

The fan/drain pan assembly is easily removable for service access to motors and blowers at, or away from, the unit.

DRAIN PAN

The sloped insulated drain pan is available in stainless steel construction. Standard drain pans are internally insulated, single wall galvanized steel. The VF Series fan/drain pan assembly is easily removable for cleaning.



COILS

All fan coils are available in 2 or 4 pipe configurations. The heating coil is standard in the reheat position. Heating and cooling coils are available with the same or opposite end connections. Access for cleaning on the entering air side is available when the drain pan is removed. Coils are removable for service or replacement.



FILTER

The filter is easily replaceable through the return air toe space without requiring removal of the front panel.

POWDER COATED PAINTED SURFACE

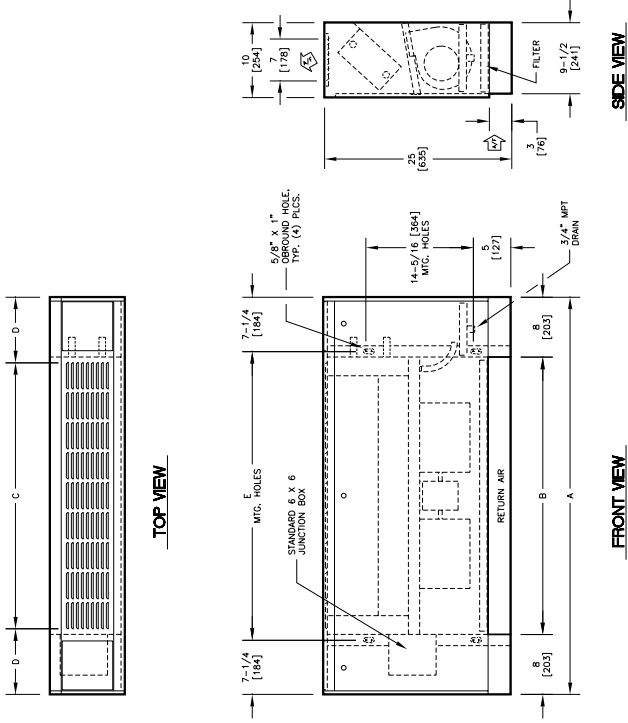
Textured decorator, powder coat finish resists scuffing, scratching, fading, and finger prints.



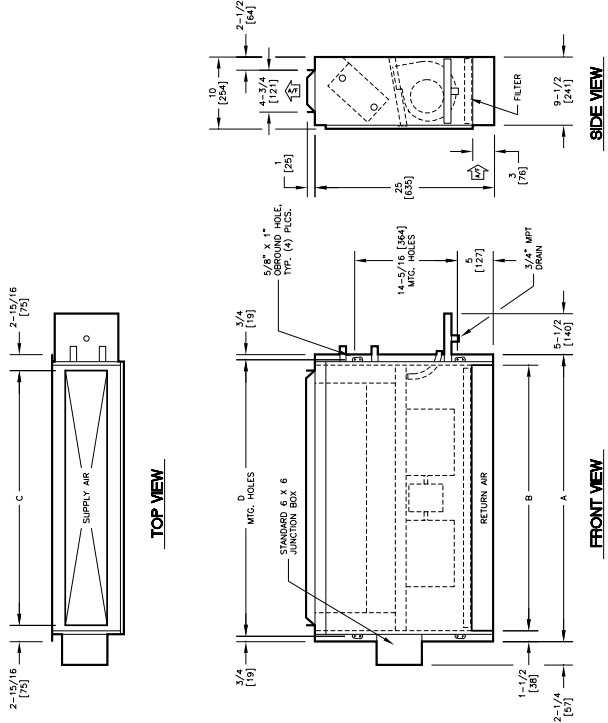
ENVIRO-TEC® offers a Windows® based Selection Program for VF Model coil selection assistance. See your ENVIRO-TEC® representative for complete catalog and product selection information.

STANDARD RATING & DIMENSIONAL INFORMATION

Model VFE



Model VFC



Model VFE

UNIT SIZE	A	B	C	D	E
20	43 [1092]	27 [686]	23 1/2 [597]	9 3/4 [248]	28 1/2 [724]
30	53 [1346]	37 [940]	31 1/2 [800]	10 3/4 [273]	38 1/2 [978]
40	63 [1600]	47 [1194]	43 1/2 [1105]	9 3/4 [248]	48 1/2 [1232]
50	73 [1854]	57 [1448]	51 1/2 [1308]	10 3/4 [273]	58 1/2 [1486]
60	83 [2108]	67 [1702]	63 1/2 [1613]	9 3/4 [248]	68 1/2 [1740]

NOTE:

1. All Dimensions are in inches [millimeters].

ARI Standard Ratings



UNIT TYPE	UNIT SIZE COIL ROWS	NOMINAL CFM	GPM	COOLING CAPACITY		PWR. INPUT WATTS	WATER PRESS. DROP FEET OF WATER
				TOTAL BTUH	SENSIBLE BTUH		
VFE (Exposed)	20, 3 Row (3C)	250	1.5	7,500	5,400	75	1.3
	30, 3 Row (3C)	500	2.4	10,900	8,300	135	2.4
	40, 3 Row (3C)	750	3.2	14,700	11,300	200	3.2
VFC (Concealed)	50, 3 Row (3C)	1000	4.9	22,700	15,700	395	5.5
	60, 3 Row (3C)	1250	5.9	26,900	20,800	355	7.5
	20, 4 Row (4C)	250	1.9	9,100	6,100	65	2.4
VFE	30, 4 Row (4C)	500	2.8	13,200	9,800	125	4.1
	40, 4 Row (4C)	750	3.9	18,200	13,400	185	4.4
VFC	50, 4 Row (4C)	1000	5.8	27,400	20,500	365	8.3
	60, 4 Row (4C)	1250	6.7	32,400	24,000	350	13.6

NOTE:

1. Based on 80°F DB and 67°F WB EAT, 45°F EWT, 10°F temperature rise, high fan speed. Motor voltage 115/1/60. Airflow under dry coil conditions.

Model VFC

UNIT SIZE	A	B	C	D
20	30 [762]	27 [686]	24 1/2 [613]	28 1/2 [724]
30	40 [1016]	37 [940]	34 1/2 [876]	38 1/2 [978]
40	50 [1270]	47 [1194]	44 1/2 [1121]	48 1/2 [1232]
50	60 [1524]	57 [1448]	54 1/2 [1375]	58 1/2 [1486]
60	70 [1778]	67 [1702]	64 1/2 [1629]	68 1/2 [1740]

NOTE:

1. All Dimensions are in inches [millimeters].

Heating Capacity

UNIT TYPE	UNIT SIZE	NOMINAL CFM	1 ROW			2 ROW			3 ROW			4 ROW	
			SMBH	GPM	WPD	SMBH	GPM	WPD	SMBH	GPM	WPD	SMBH	GPM
VFE	20	250	8.6	0.4	0.2	15.7	0.8	0.9	19.7	1.0	0.3	22.9	1.2
	30	500	15.1	0.8	0.6	27.5	1.5	3.2	36.0	2.0	1.2	42.0	2.3
	40	750	21.0	1.2	1.5	36.0	2.1	1.6	49.1	2.8	1.1	57.7	3.3
VFC	50	1000	27.3	1.5	0.7	51.0	2.7	2.9	70.0	3.8	2.0	82.2	4.4
	60	1250	35.4	2.0	4.7	60.9	3.4	4.7	84.1	4.7	3.4	98.5	5.5

NOTE:

1. Based on 70°F DB EAT, 180°F EWT, 40°F temperature drop, high fan speed.

ENVIRONMENTAL TECHNOLOGIES, INC.
ENGINEERING FOR EXCELLENCE

6750 Bryan Dairy Rd. • Largo, FL 33777 • 727-541-3531 • Fax 727-545-1028
www.enviro-tec.com
SS-FCUVF 9/99