

ACDCTouchStudioDaemon User Guide

V1.0

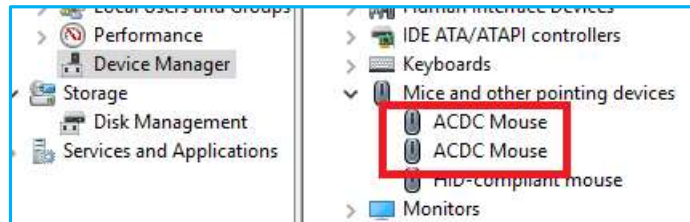
Contents

1. Installation	3
2. Bootloader or Firmware Update.....	5
3. Touch Device Identify	8
4. Beep Setting	9
5. Double Click	10
6. Multi Monitor Mapping	11
7. TouchStudioDeamon version information	13
8. Touch Direction Setting.....	14
9. Touch Mode Switching	15
9.1 Multi-touch Mode	16
9.2 Emulation Mode.....	17
9.3 Mouse Descriptor Mode	18
9.4 Generated by Daemon Mode	19
10. Feature.....	20
11. Information	21

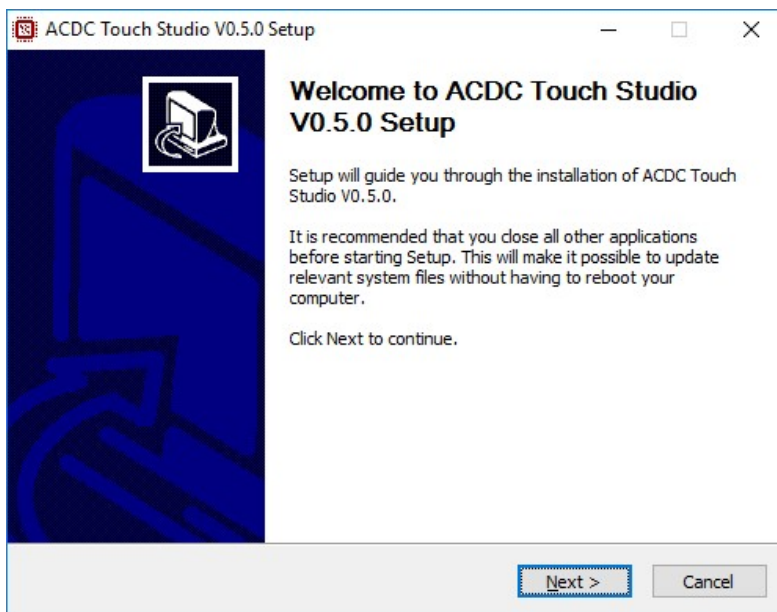
1. Installation

Note1) When installing the daemon in Windows 7 OS, if “KB3033929” is not installed in the OS, you should install KB3033929 first, then try to install daemon.

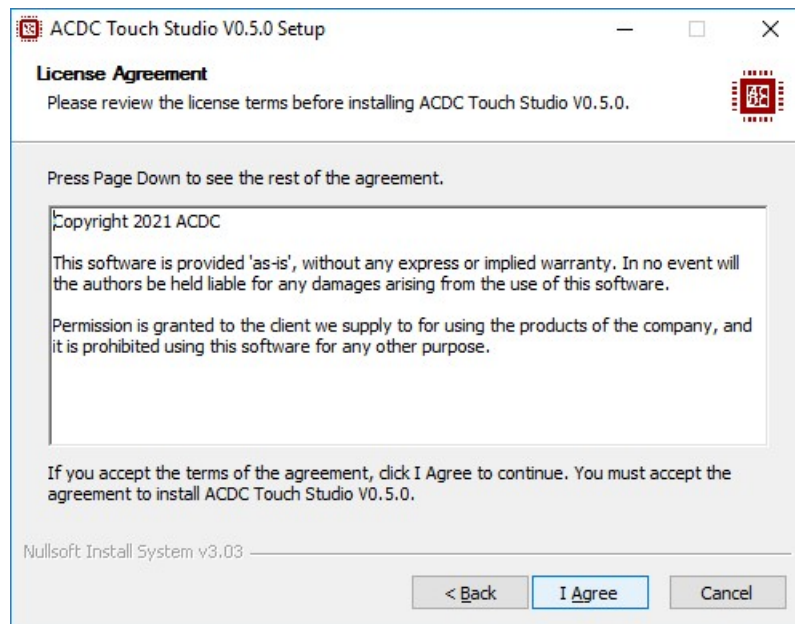
Note2) When the daemon is installed, the touch driver is also installed. Check the device manager to make sure the daemon is installed correctly.



Double click on the “ACDC_Touch_Studio_Installer” installer to install.

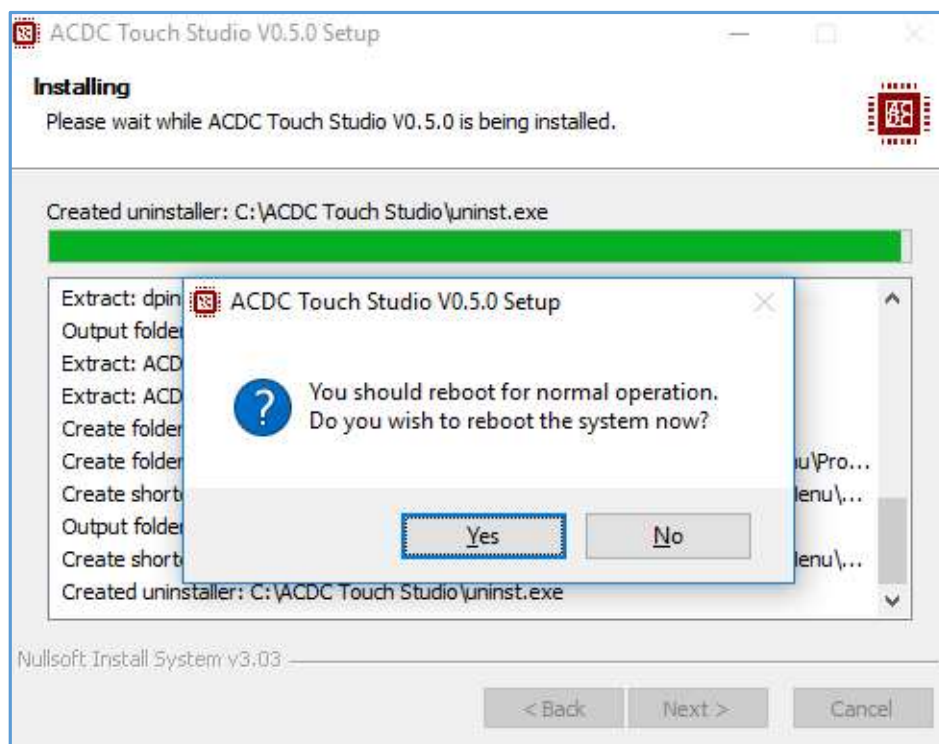


Click "Next" to continue the installation.



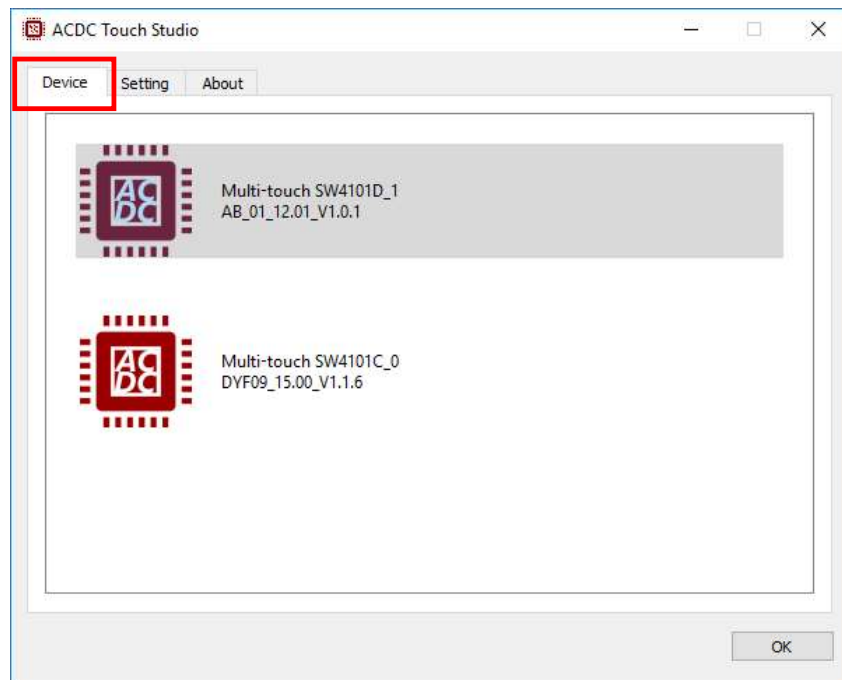
Click "I Agree" to continue the installation.

After the installation is complete, click "Yes" to restart the system.

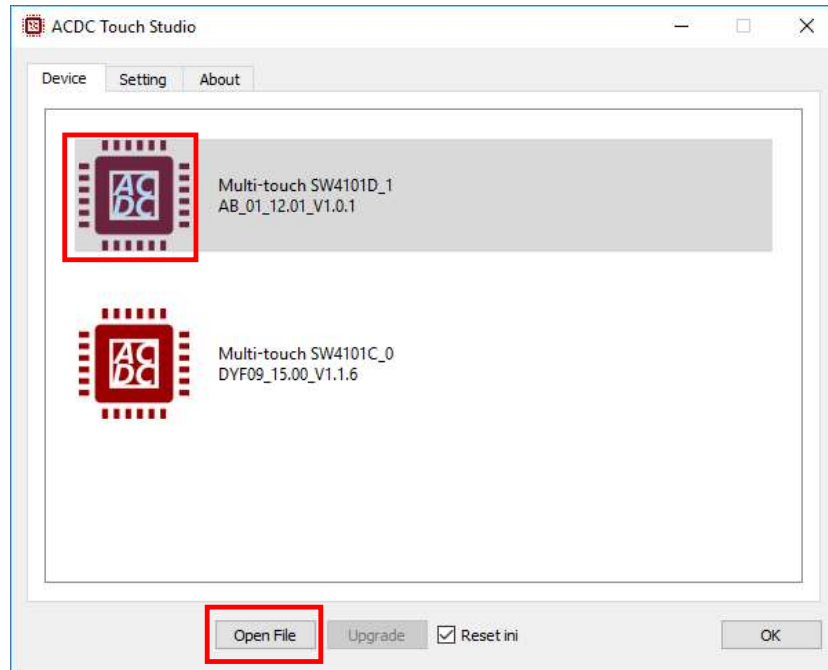


2. Bootloader or Firmware Update

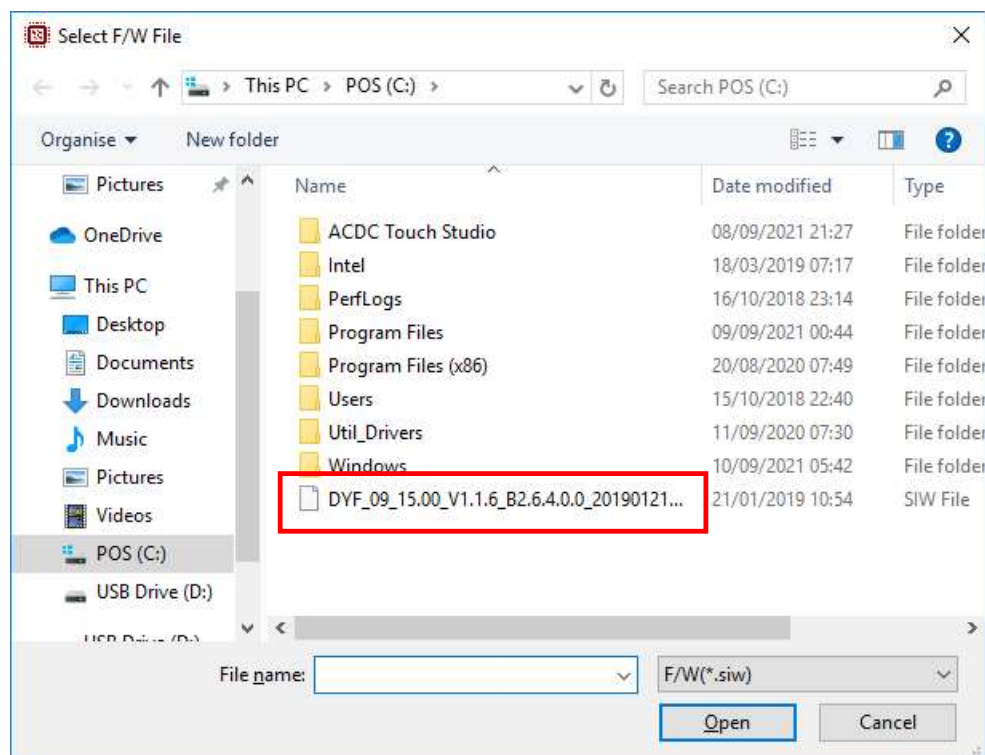
TouchStudioDaemon support bootloader and firmware update, only support updating via USB interface now. Open Daemon, click the “Device” area 5 times to show the function of the upgrade.



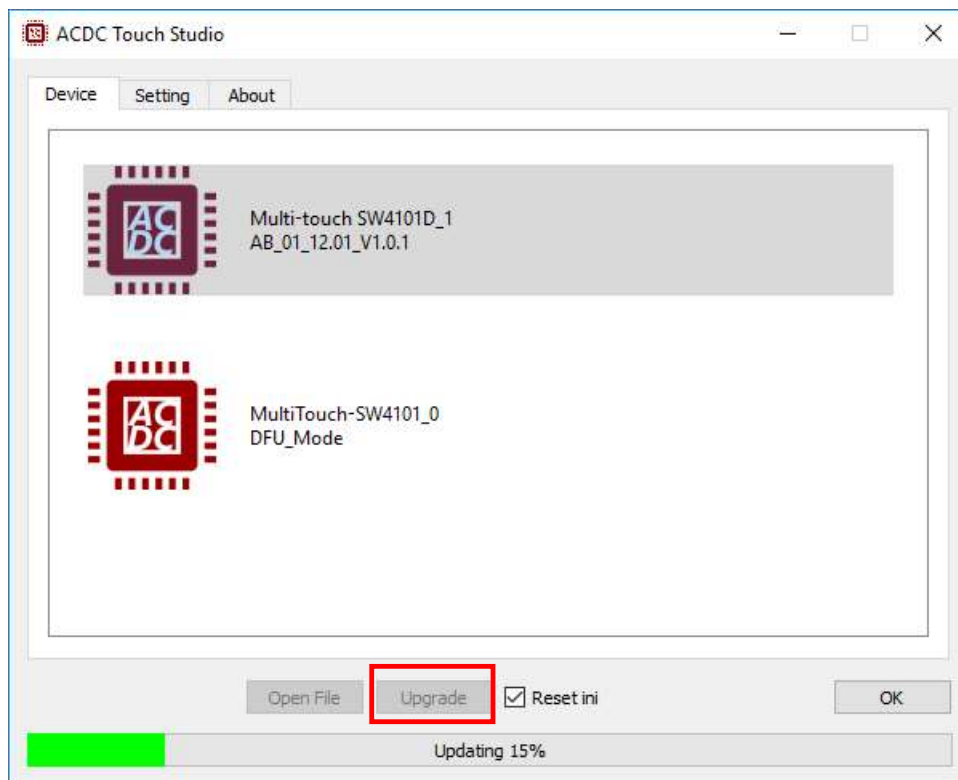
Click the device icon to select the device you want to upgrade, click the “Open File” button to select the bootloader or firmware file.



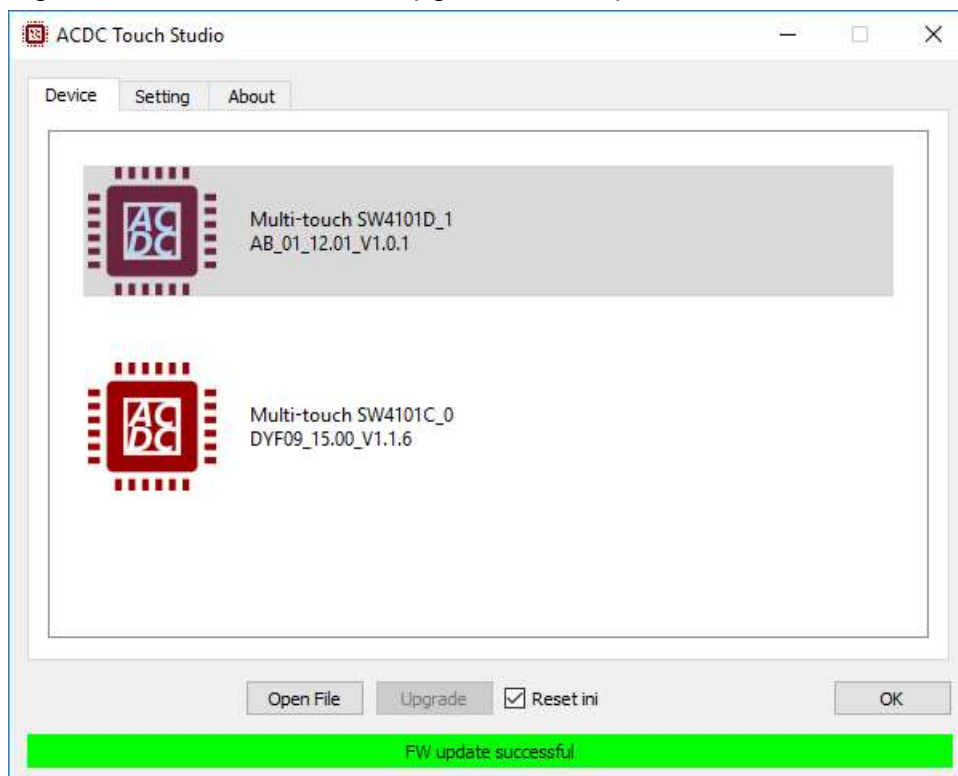
Select the file to upgrade.



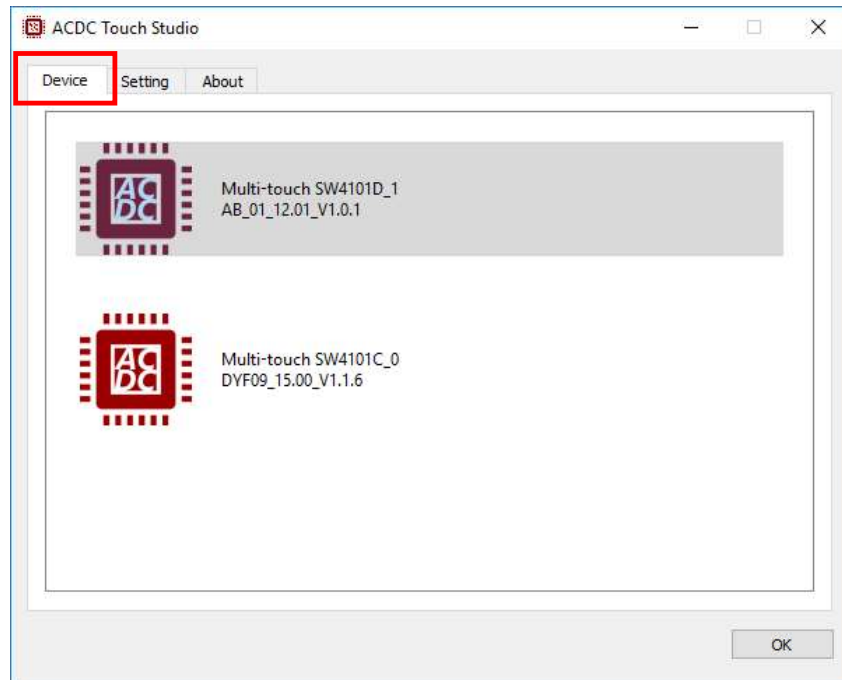
After selecting File, click the “Upgrade” button to start upgrade and it will show upgrade progress.



When the progress reaches 100%, the upgrade is completed.



Click the “Device” area 5 times to hide the function of the upgrade to prevent mis-operation.

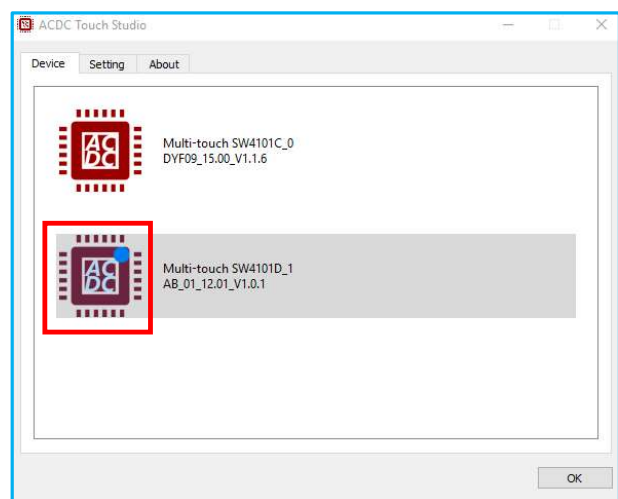
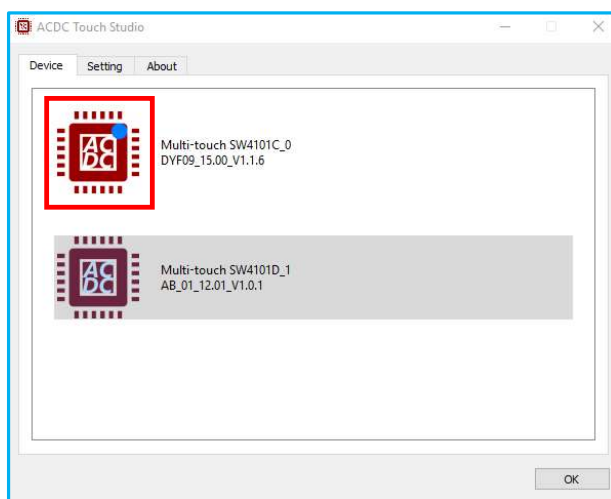


3. Touch Device Identify

When using multiple touch devices, the current touched device can be identified under the interface of the “Device”.

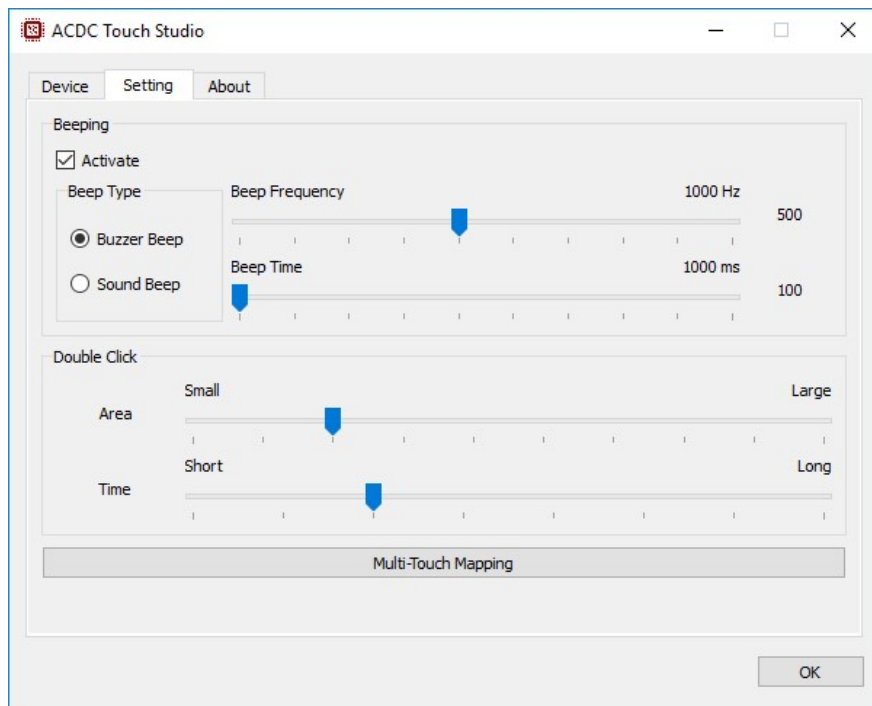
- Identify

when the corresponding device touch, there will be an arrow to indicate.



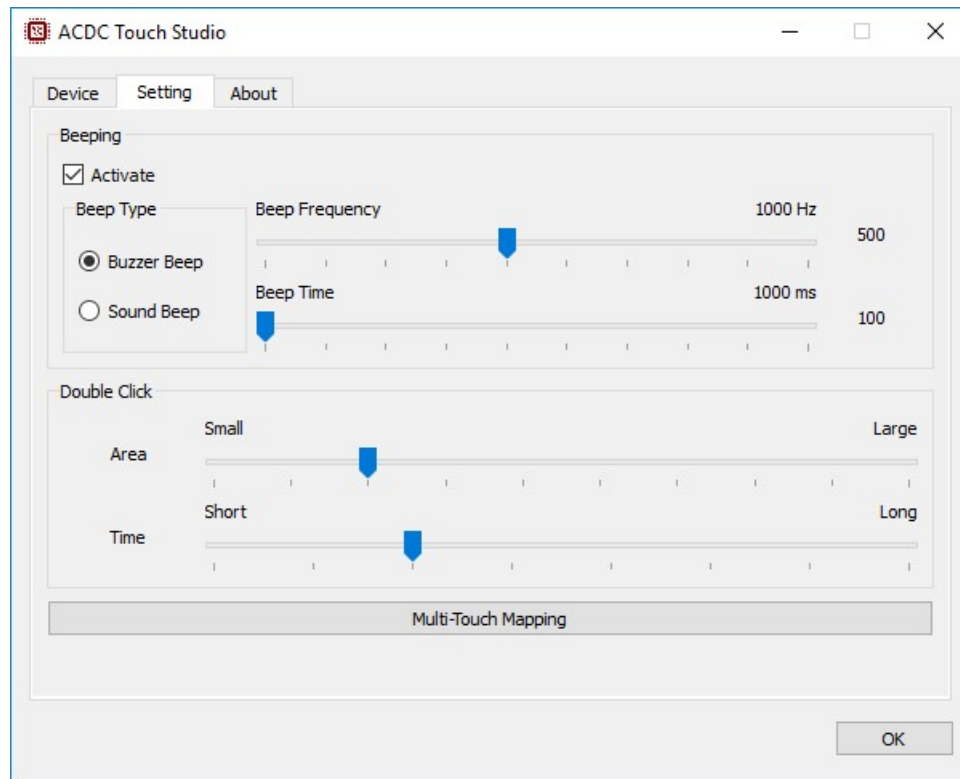
4. Beep Setting

Beep can be set under “Setting” tab.



- **Activate**
Check: enable touch beep.
Uncheck: Disable touch beep.
- **Buzzer Beep**
Use the main board buzzer to make a beep.
- **Sound Beep**
Use sound card to make a beep.

5. Double Click



- Double Click

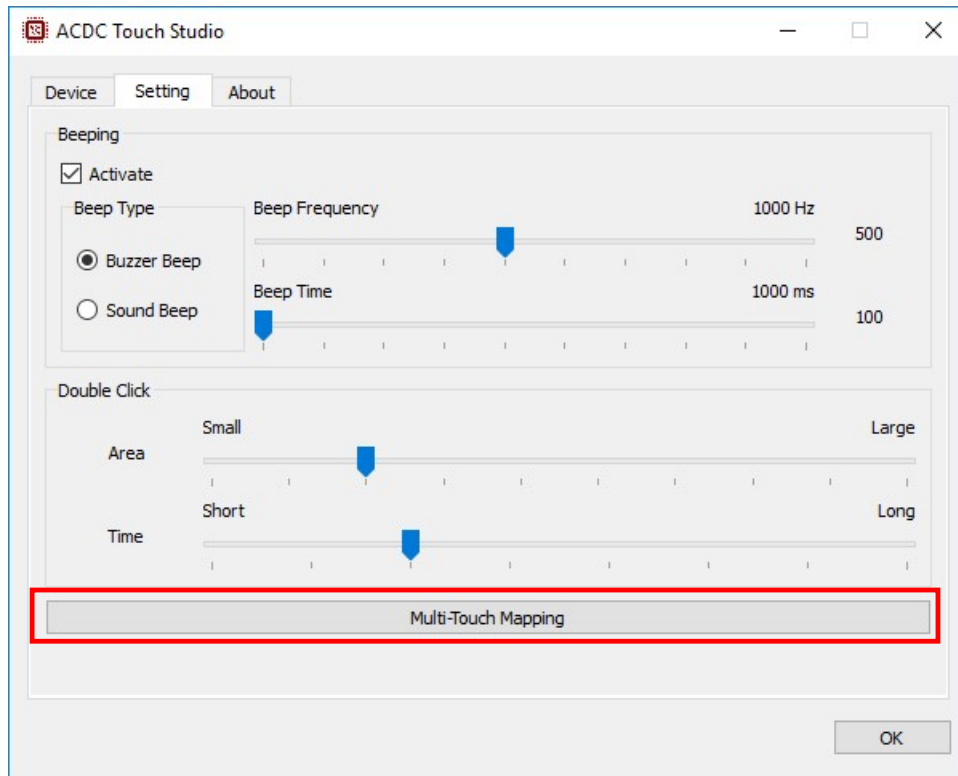
Area: adjust the range between the first and second clicks for a double click.

Time: adjust the time interval between the first and second clicks for a double click

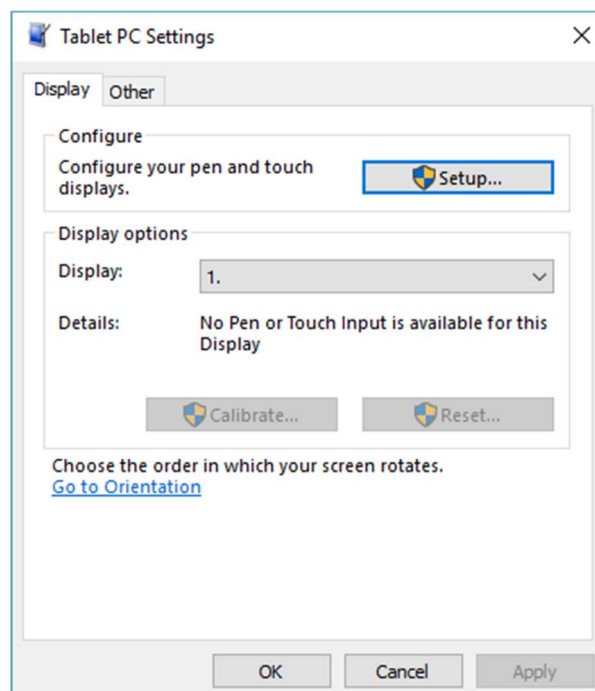
6. Multi Monitor Mapping

Multi monitor mapping supports multi-touch firmware mode.

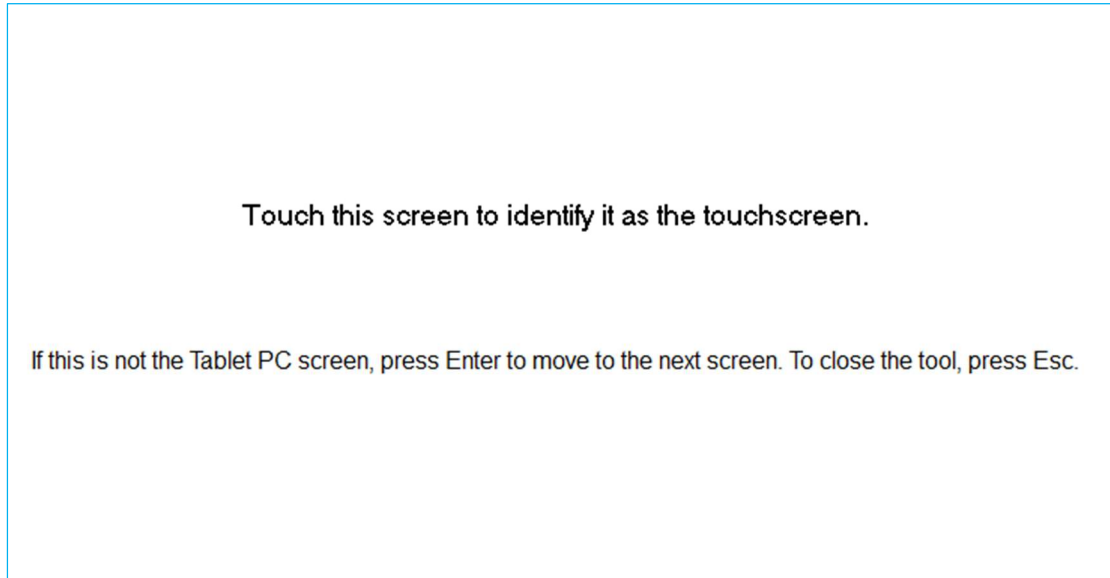
Click the “Multi-Touch Mapping” button under the “Setting” tab.



It will show “Tablet PC Settings” window.



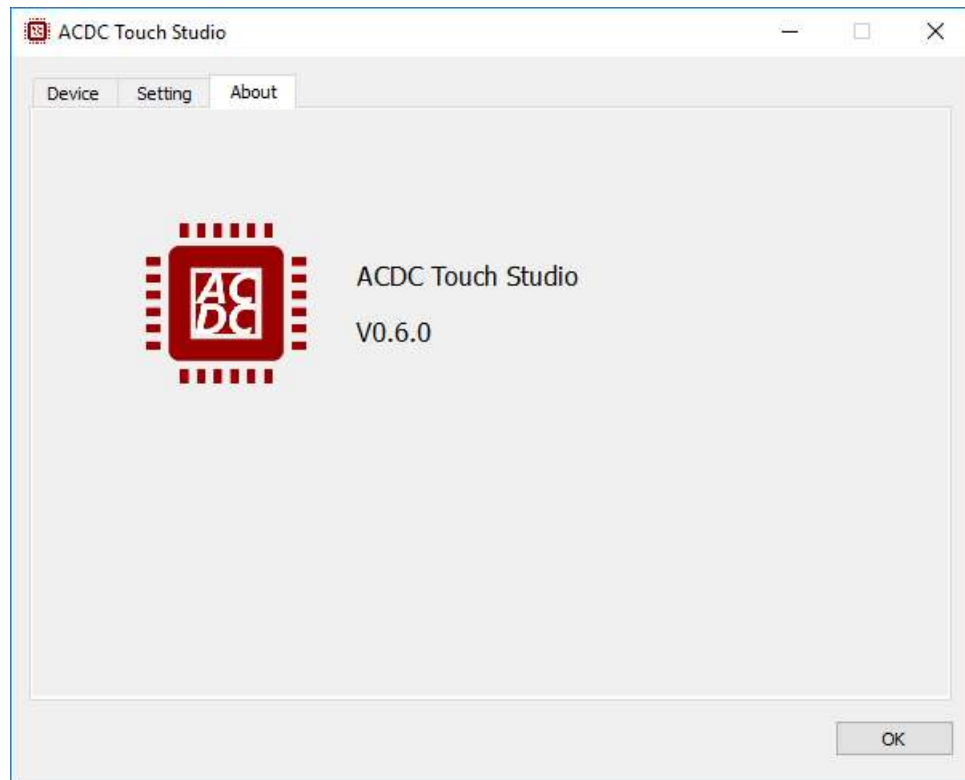
Click the “Setup...” button to start the multi monitor mapping program. According to the prompt, press Enter to switch between different screens. Then touch the touch panel on the screen you want to touch, touch will be fixed on that screen.



When setting is complete, multi monitor mapping program will exit automatically

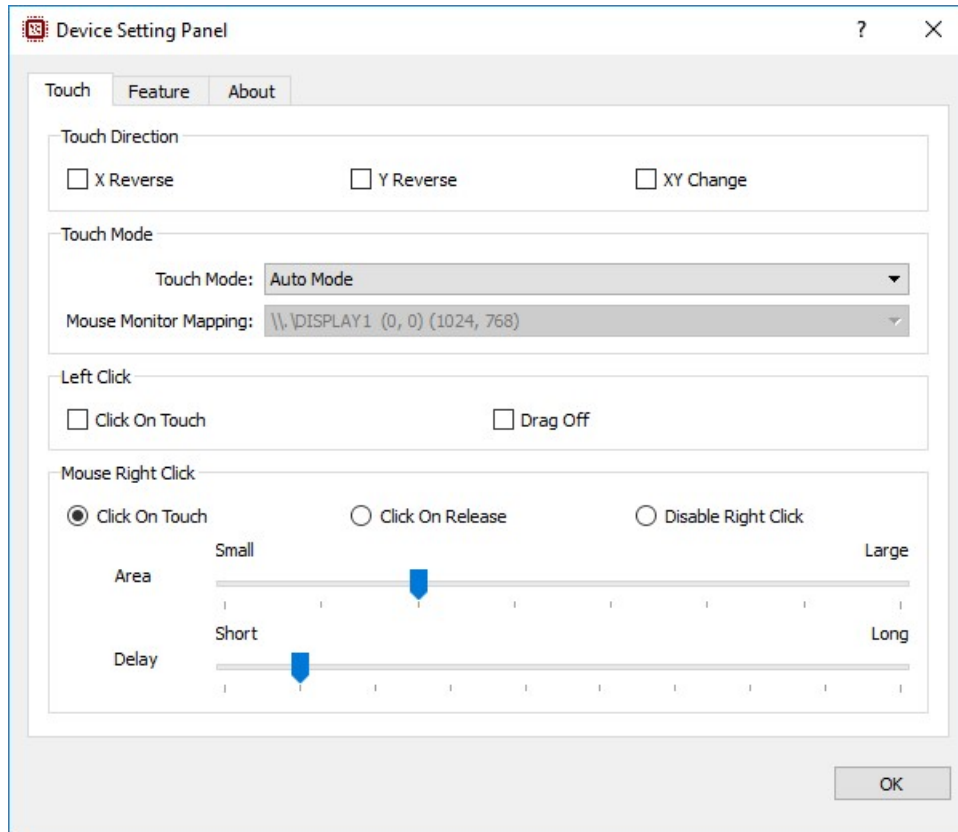
7. TouchStudioDaemon version information

You can check the daemon version.



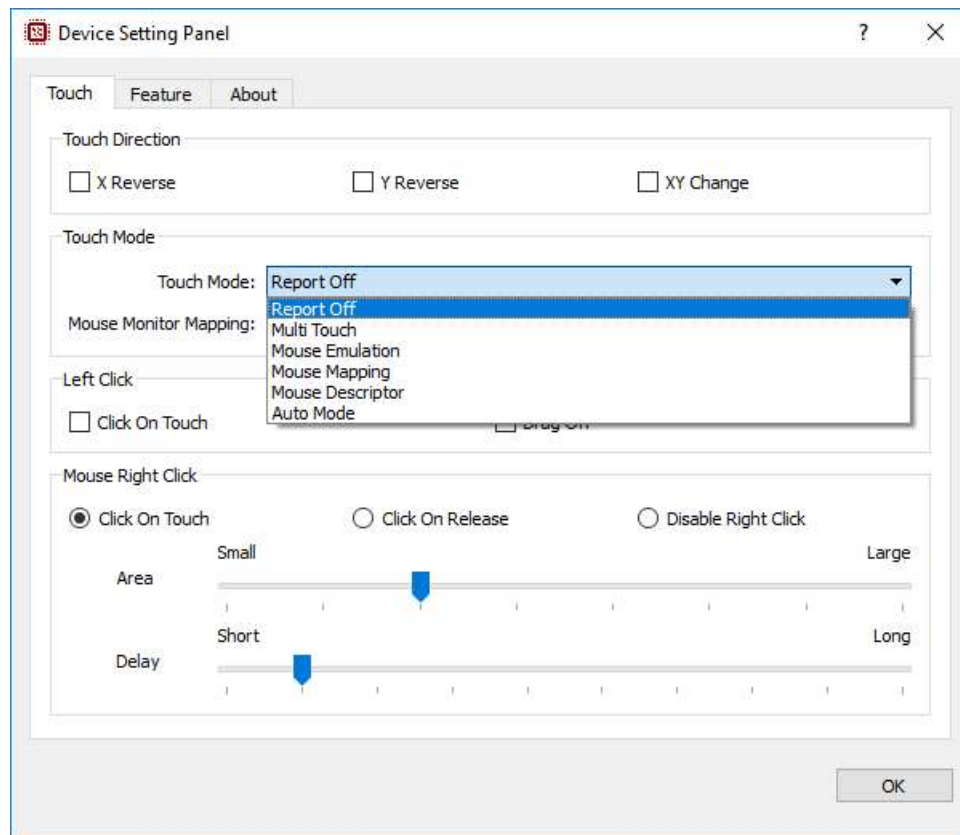
8. Touch Direction Setting

Double-click to open the corresponding device. Touch direction can be set under the “Direction” tab.



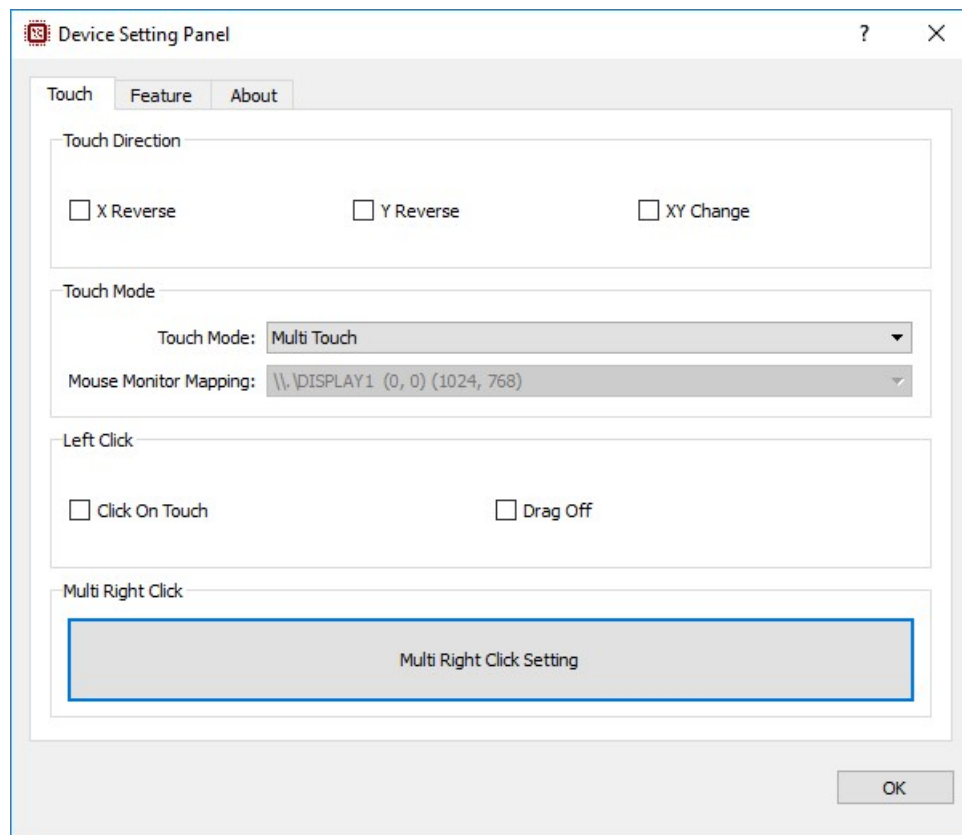
- X Reverse
Set the X axis coordinate direction.
- Y Reverse
Set the Y axis coordinate direction.
- X Y Change
X axis and Y axis coordinate interchange.

9. Touch Mode Switching



- Report off
The touch device is recognized to the OS, but touch data is not output to the OS.
- Multi Touch
Touch works as multi-touch mode.
- Mouse Emulation
Touch works as Emulation mode.
- Mouse Mapping
It can be used when a second monitor is connected and used in mouse touch mode.
- Mouse Descriptor
Touch works as Mouse Descriptor mode.
- Auto
It operates automatically with the mode set in the firmware.

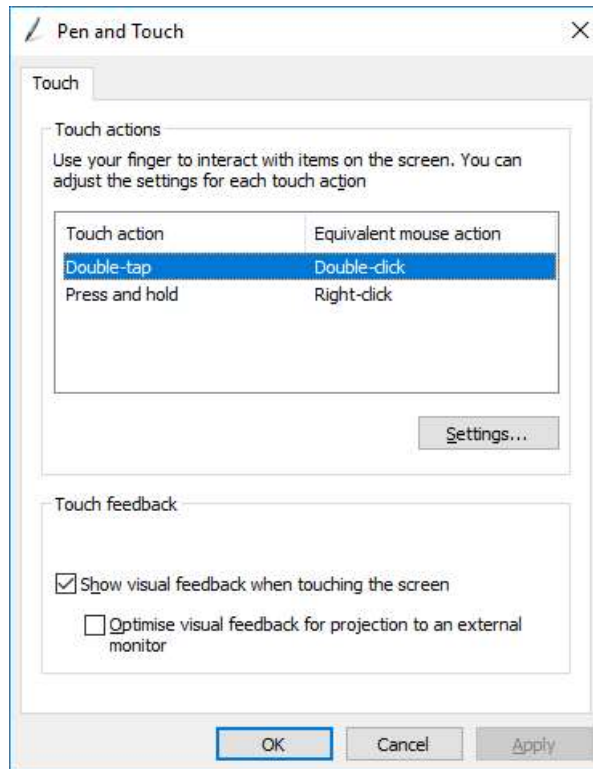
9.1 Multi-touch Mode



- Left Click

Click on Touch : left click on touch.

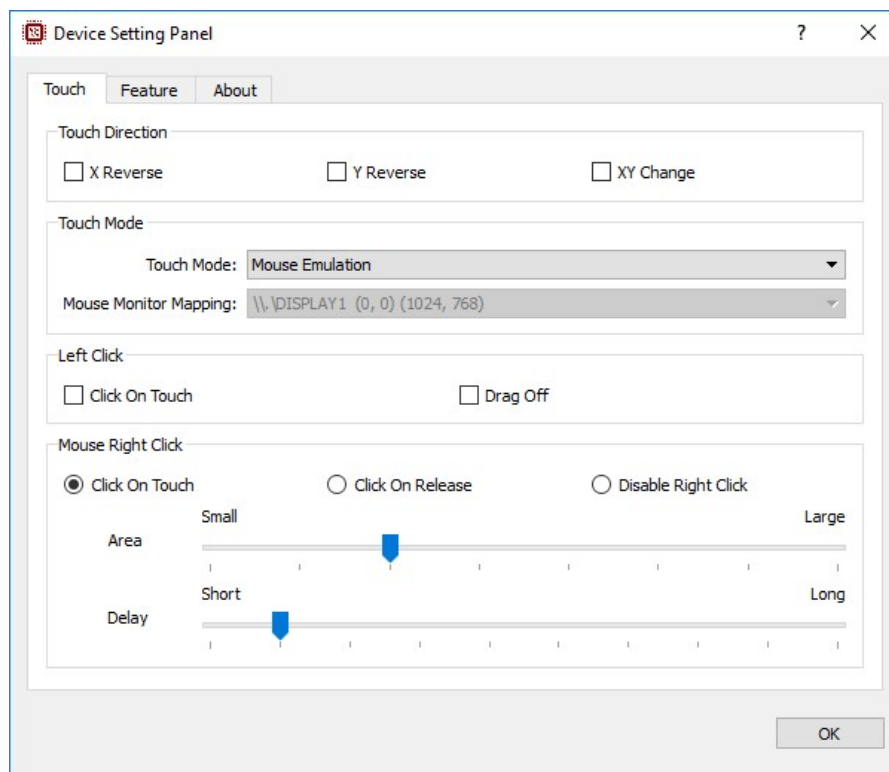
Drag Off : disable drag function



- Multi Right Click

You can use the right click function supported by Windows.

9.2 Emulation Mode



- Mouse Right Click

Click on Touch: right click on touch.

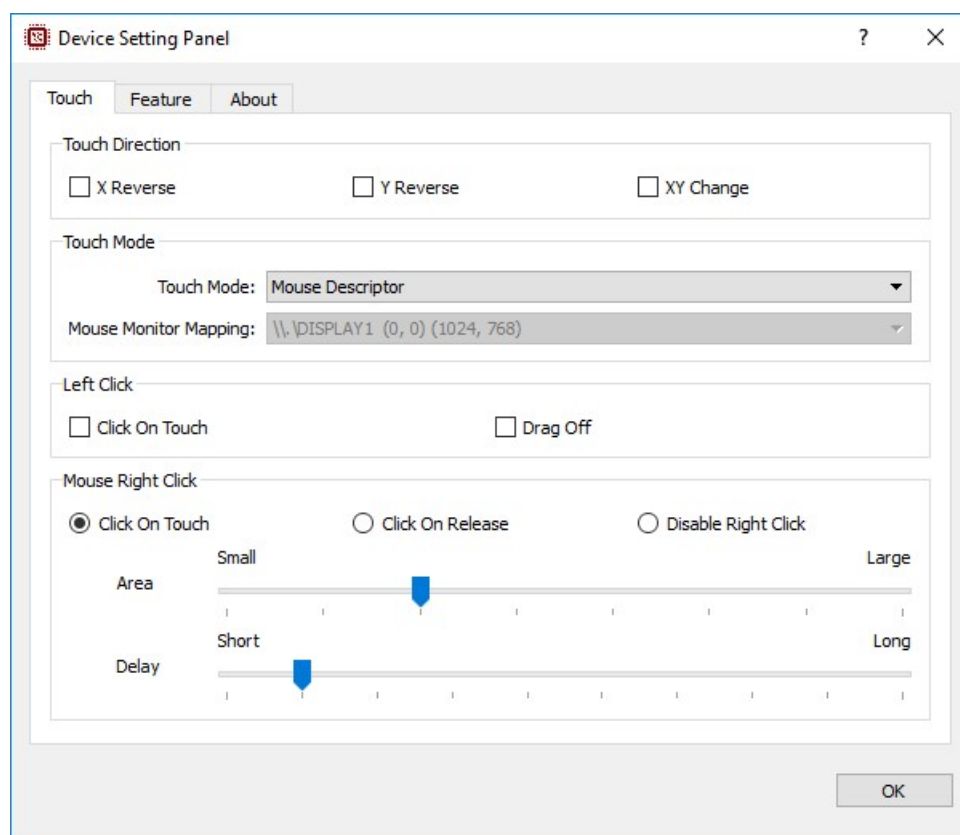
Click on Release: right click on release.

Disable Right Click: disable right click.

Area: set the right-click area.

Delay: set the right-click time.

9.3 Mouse Descriptor Mode



- Mouse Right Click

Click on Touch: right click on touch.

Click on Release: right click on release.

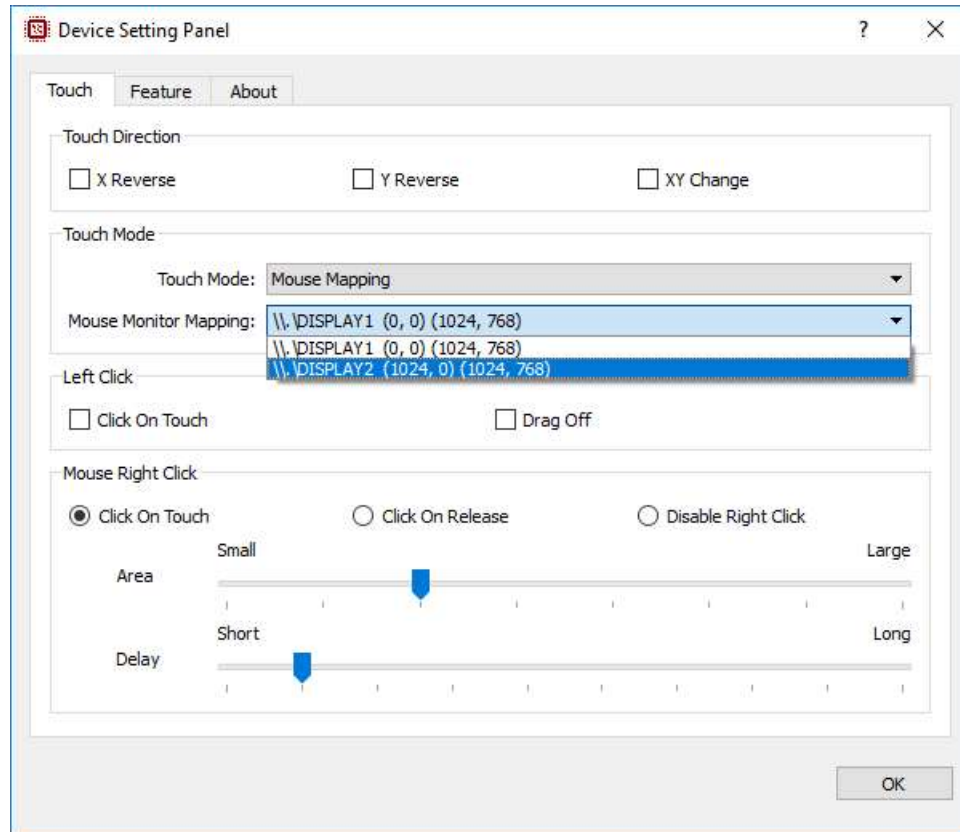
Disable Right Click: disable right click.

Area: set the right-click area.

Delay: set the right-click time.

9.4 Generated by Daemon Mode

When the two touch monitors are single firmware, it supports touch mapping.



- Right Click

Click on Touch: right click on touch.

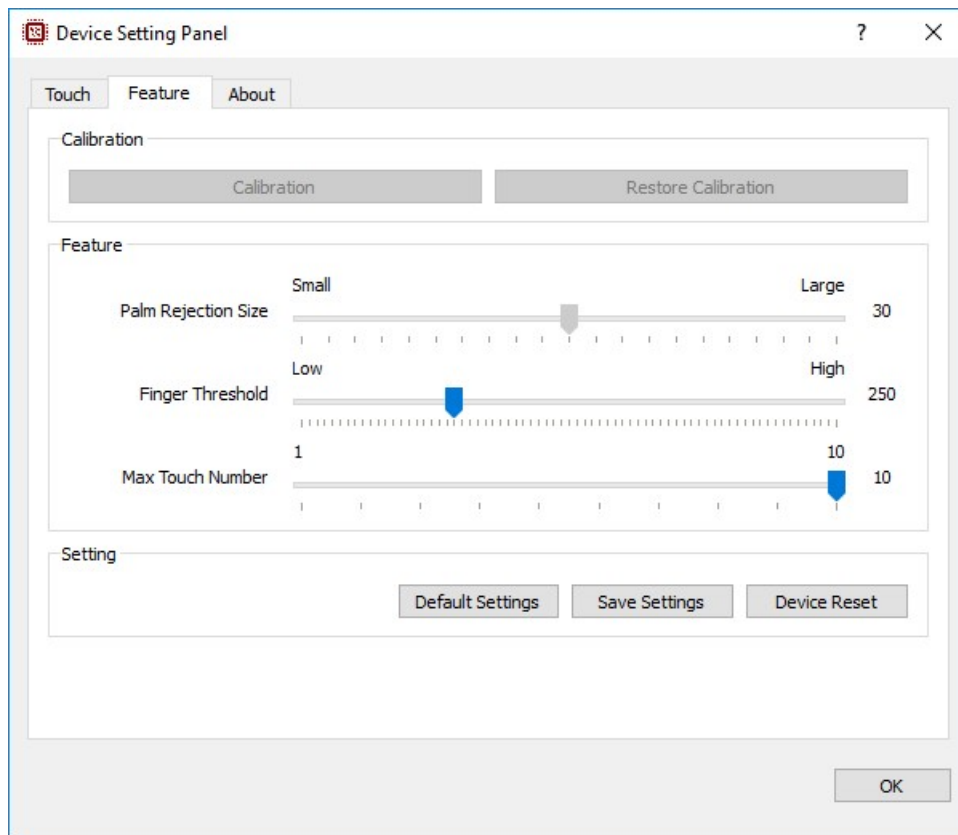
Click on Release: right click on release.

Disable Right Click: disable right click.

Area: set the right-click area.

Delay: set the right-click time.

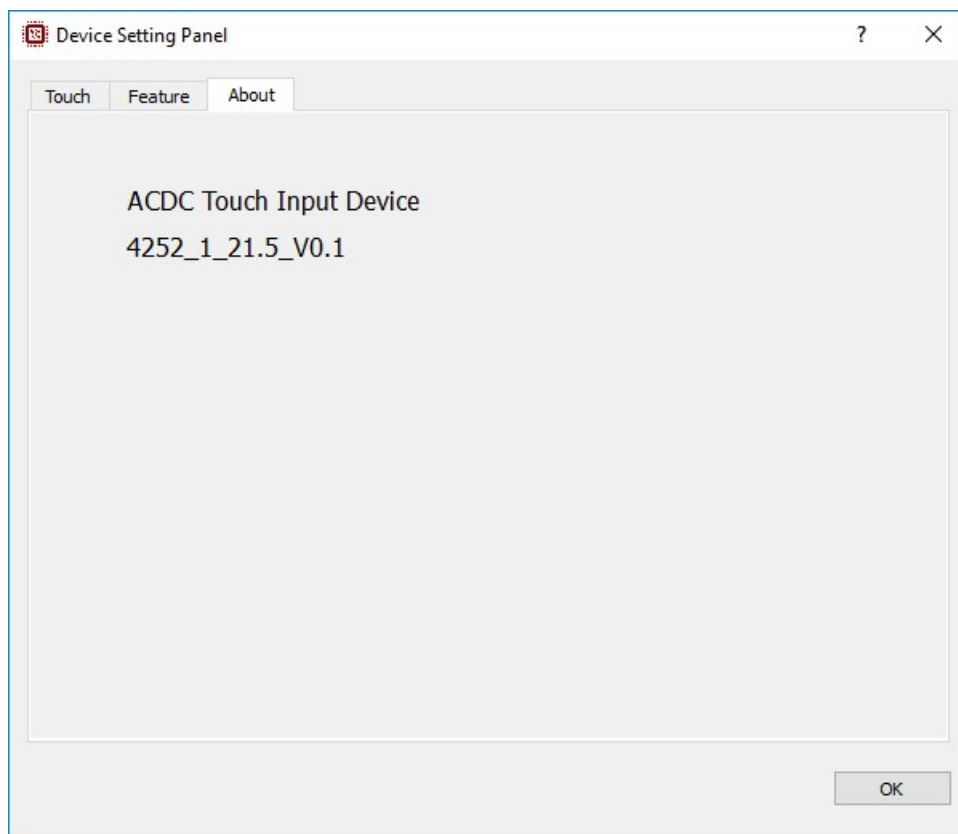
10. Feature



- Palm Rejection Size
Ignore the touch of a large area.
- Finger Threshold
Increase this value will reduce sensitivity, decrease this value will increase sensitivity.
- Max ID Number
Set the number of touch points.
- Default Settings
It can set as the setting value of the original firmware.
- Save Settings
It can save the changed setting value to ic.
- Save Settings
It can reset the ic.

11. Information

You can check the firmware version of the touch device.



THANK YOU



Contact Point

✓ R & D Team

E-mail : ACDCRD@advancustom.com