



# Windows Driver Manual

---

PP-82

Rev.1.0

# CONTENTS

- 1.Manual Information ..... 1
- 2.Operating System (OS) Environment..... 1
- 3.Windows Driver Preparation..... 1
- 4.Windows Driver Installation ..... 2
- 5.Detailed Windows Driver Setting .....10
  - 5.1 Printing Preferences .....10
  - 5.2 Other Settings.....33
- 6.Uninstall Windows Driver.....37
- 7.Specification .....39

## 1.MANUAL INFORMATION

This Windows Driver Installation Manual provides information on installation, detailed specifications, and usage of the printer's Windows Driver according to PC operating system (OS).

We maintain ongoing efforts to enhance and upgrade the functions and quality of all our products. As follow, product specifications and/or user manual content may be changed without prior notice.

## 2.OPERATING SYSTEM (OS) ENVIRONMENT

The following operating systems are supported for usage.

- Microsoft Windows 10 (32 bit/64 bit)
- Microsoft Windows 8 (32 bit/64 bit)
- Microsoft Windows 7 SPI (32 bit/64 bit)
- Microsoft Windows Vista SP2 (32 bit/64 bit)
- Microsoft Windows XP Professional SP3 (32 bit)
- Microsoft Windows Server 2012(64 bit)
- Microsoft Windows Server 2008 R2
- Microsoft Windows Server 2008 SP2(32 bit/64 bit)
- Microsoft Windows Server 2003 R2 SP2(32 bit/64 bit)

## 3.WINDOWS DRIVER PREPARATION

The Windows Driver is included in the enclosed CD.

The installation file name is HPRT POS Printer Driver-V-X.X.X.X.exe

eg : WINTEC POS Printer Driver-v-2.5.5.0.exe

## 4. WINDOWS DRIVER INSTALLATION

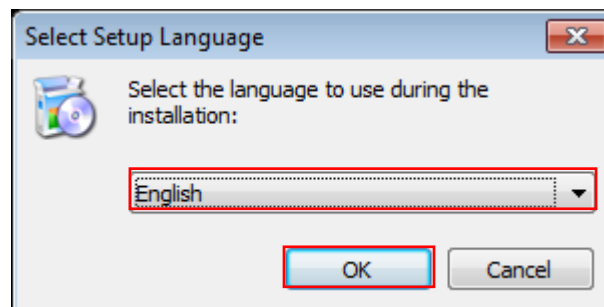


**Warning:**

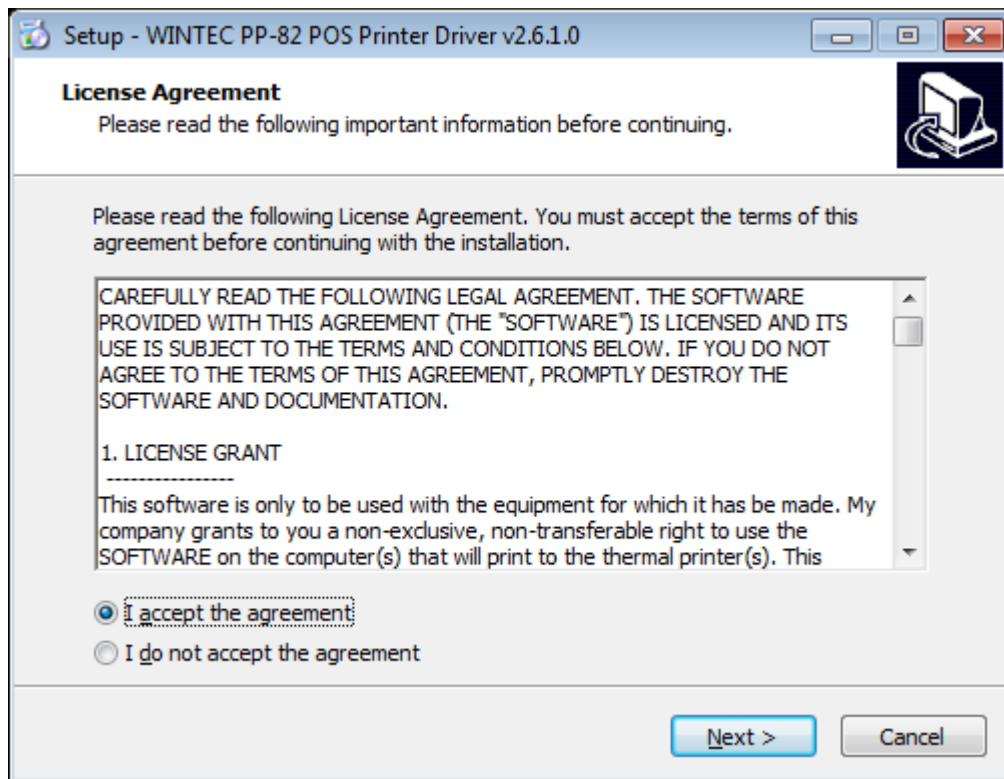
**Under different operating system and different type of driver, the screen has slight difference.**

**Please operate it according to the tips. Take PP-82 (Windows 7) as example.**

- 1) Double click Windows Driver.
- 2) Choose "English" and click "OK".

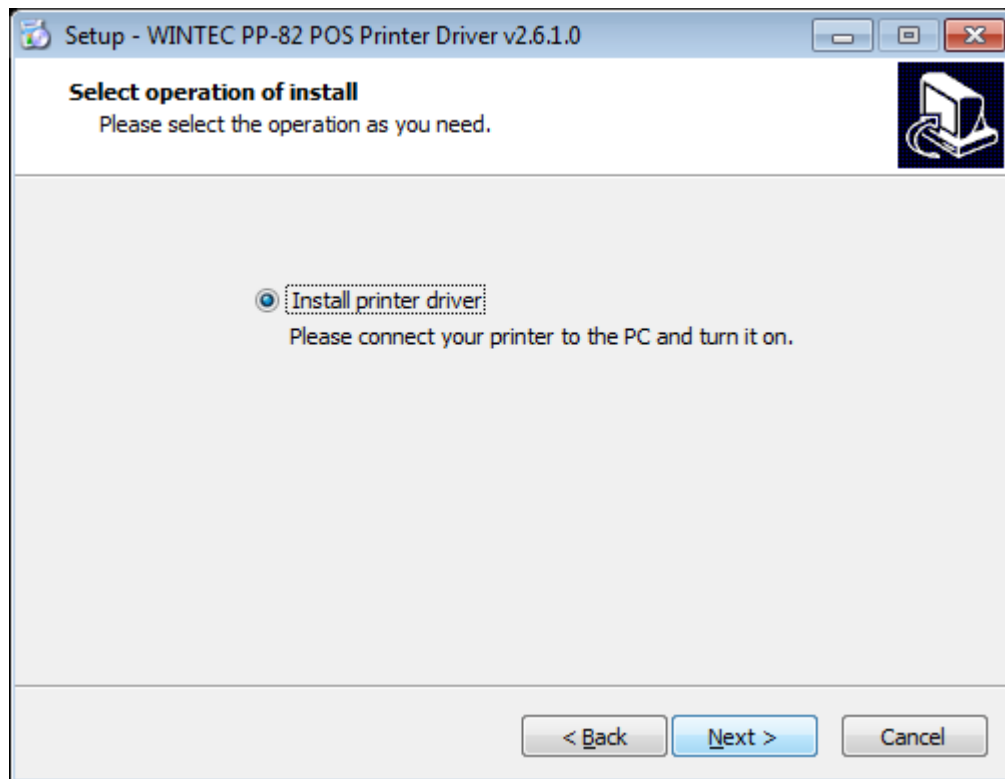


3) Choose "I accept the agreement", then click "Next".

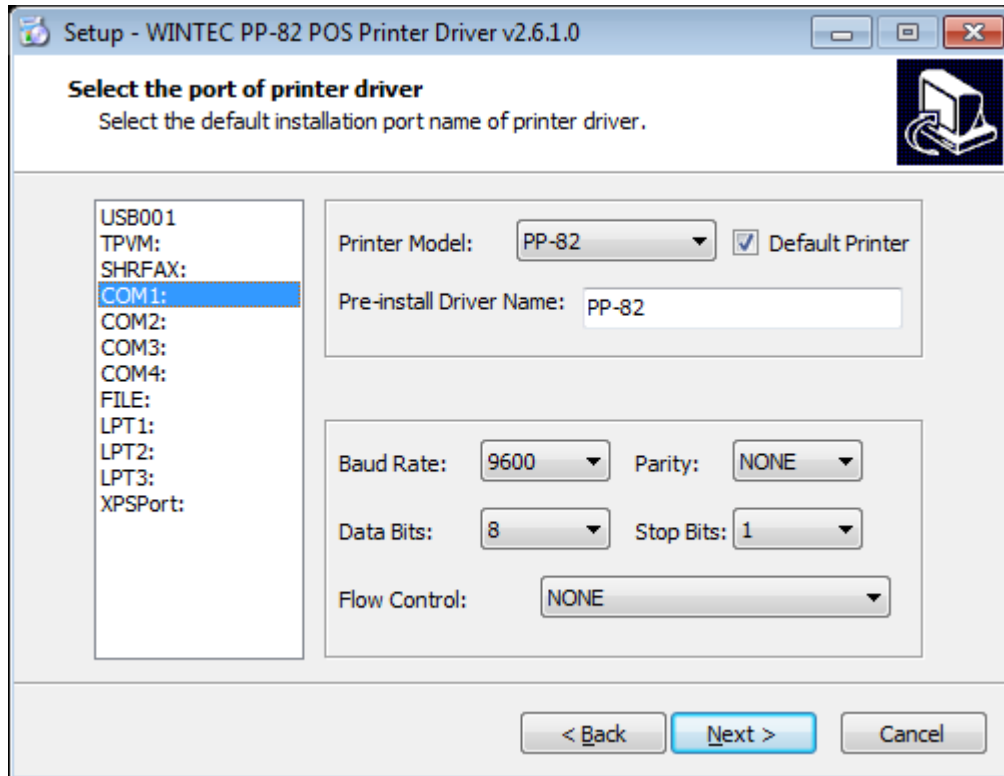


**NOTE:** If printer is already connected with computer by USB port, it only needs to click "Install", then it will be installed automatically. Otherwise, proceed to the next step.

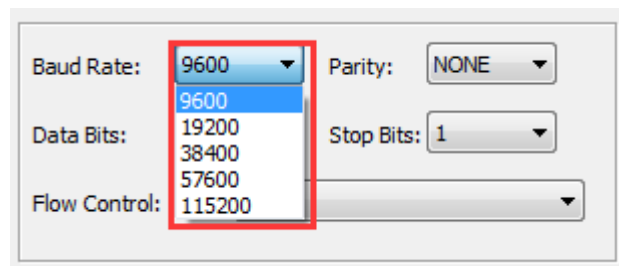
4) Click "Next".



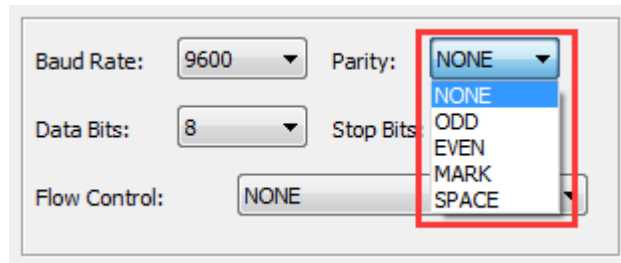
5) Choose the matched type and port (USBxxx is for USB port, COMx is for serial port, LPTx is for parallel port). Choose the type of driver, port, such as "PP-82", "COM1" as port. Click "Next".



■Baud Rate (Range from 9600 to 115200):

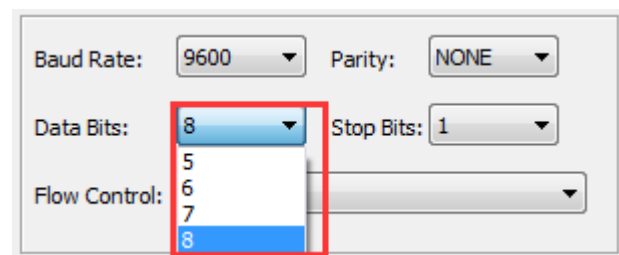


■Parity (ODD, EVEN, MARK, SPACE):



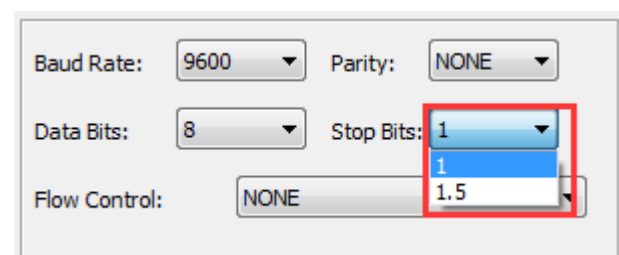
A screenshot of the Wintec driver configuration window. The 'Parity' dropdown menu is open, showing options: NONE, ODD, EVEN, MARK, and SPACE. The 'NONE' option is currently selected. Other settings visible include Baud Rate: 9600, Data Bits: 8, Stop Bits: 1, and Flow Control: NONE.

■Data Bits (Range from 5 to 8):



A screenshot of the Wintec driver configuration window. The 'Data Bits' dropdown menu is open, showing options: 5, 6, 7, and 8. The '8' option is currently selected. Other settings visible include Baud Rate: 9600, Parity: NONE, Stop Bits: 1, and Flow Control: NONE.

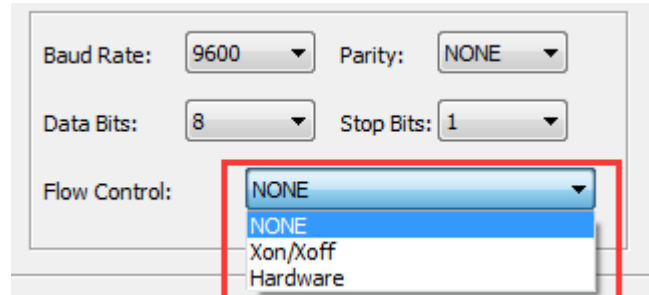
■Stop Bits (Range from 1 to 1.5):



A screenshot of the Wintec driver configuration window. The 'Stop Bits' dropdown menu is open, showing options: 1 and 1.5. The '1' option is currently selected. Other settings visible include Baud Rate: 9600, Parity: NONE, Data Bits: 8, and Flow Control: NONE.



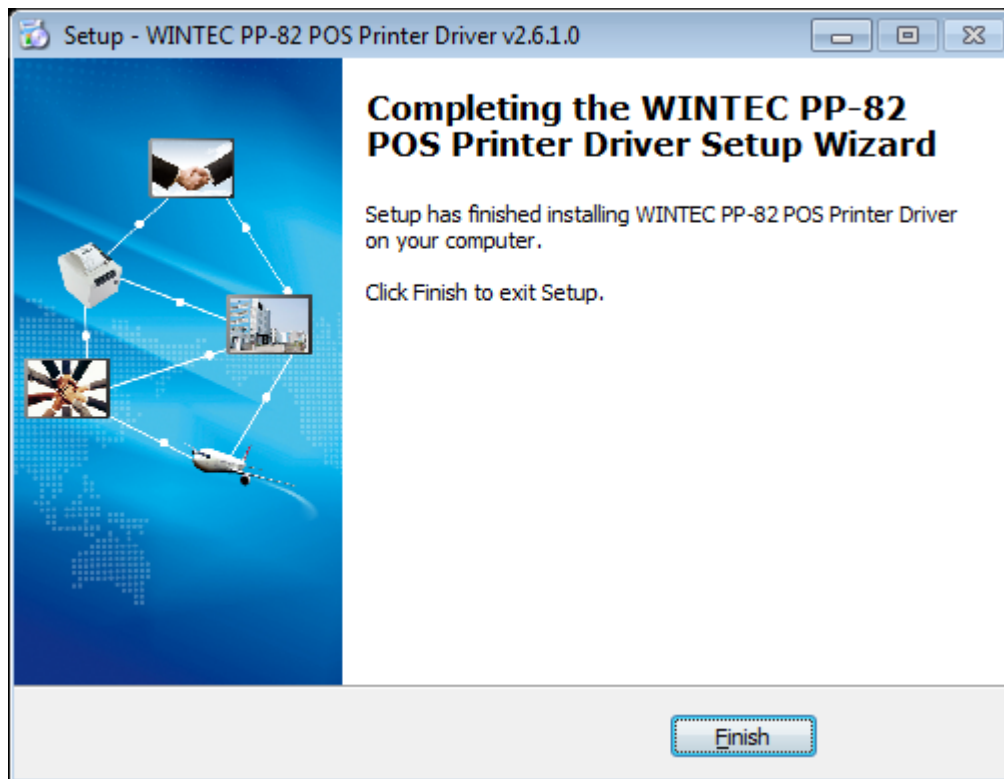
### ■Flow Control:



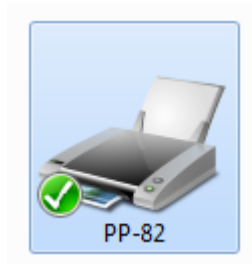
The screenshot shows a configuration window for the Wintec POS Windows Driver. It contains several dropdown menus for serial communication settings. The 'Flow Control' dropdown menu is open, showing three options: 'NONE', 'Xon/Xoff', and 'Hardware'. The 'NONE' option is currently selected and highlighted in blue. A red rectangular box is drawn around the 'Flow Control' dropdown menu and its list of options.

Baud Rate:	9600	Parity:	NONE
Data Bits:	8	Stop Bits:	1
Flow Control:	NONE Xon/Xoff Hardware		

6) Click "Finish". The printer driver is installed successfully.



7) After installation, the icon will be found in "Start" → "Devices and Printers".

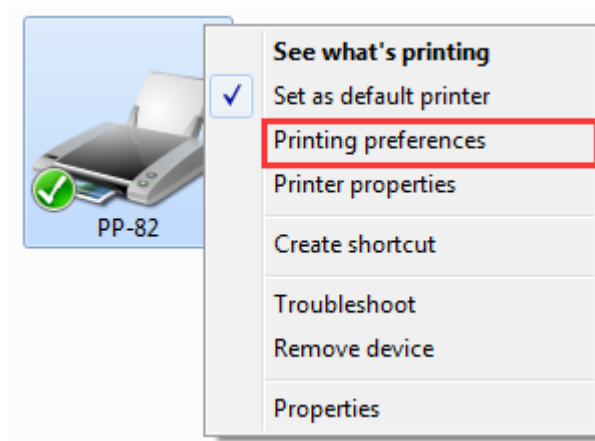


**NOTE:** If you already installed the driver (No matter what kind of port), when you connect the printer with computer, it will create a USB port automatically.

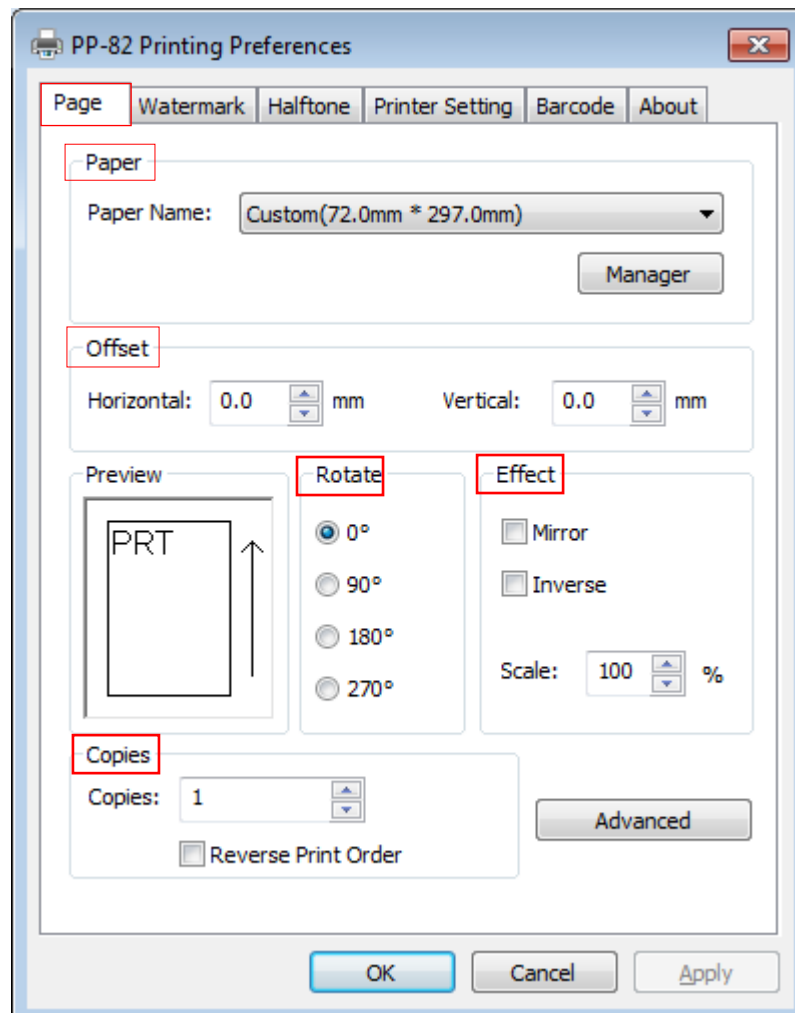
## 5.DETAILED WINDOWS DRIVER SETTING

### 5.1 Printing Preferences

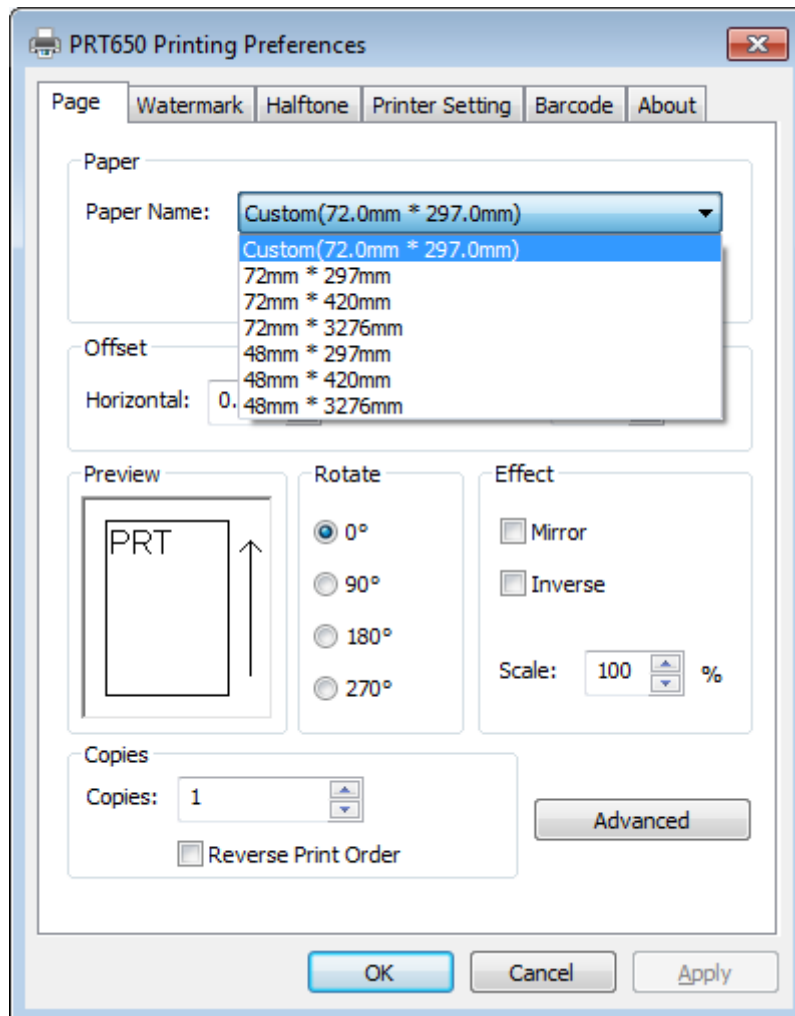
1) Click "Start"→"Devices and Printers". Right click "PP-82" and choose "Printing preferences".



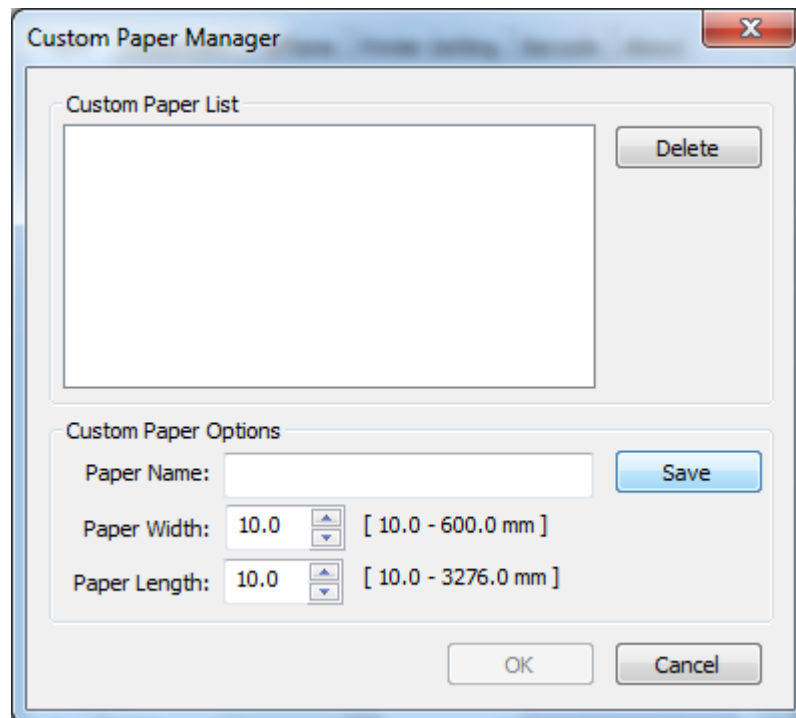
2) According to the different needs, choose "Paper"\'\'Offset"\'\'Rotate"\'\'Effect"\'\'  
"Copies" in "Paper".



- Click “Paper Name”, choose the specifications of paper.



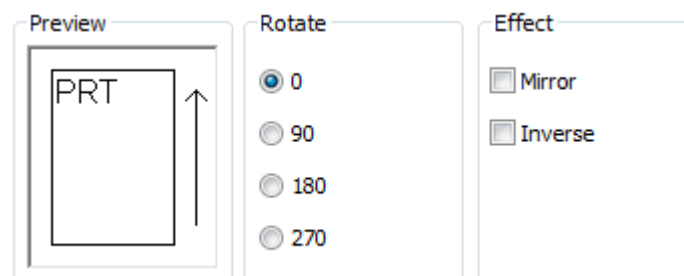
- Click on “Manager”, add or delete paper.



- Choose “Offset”

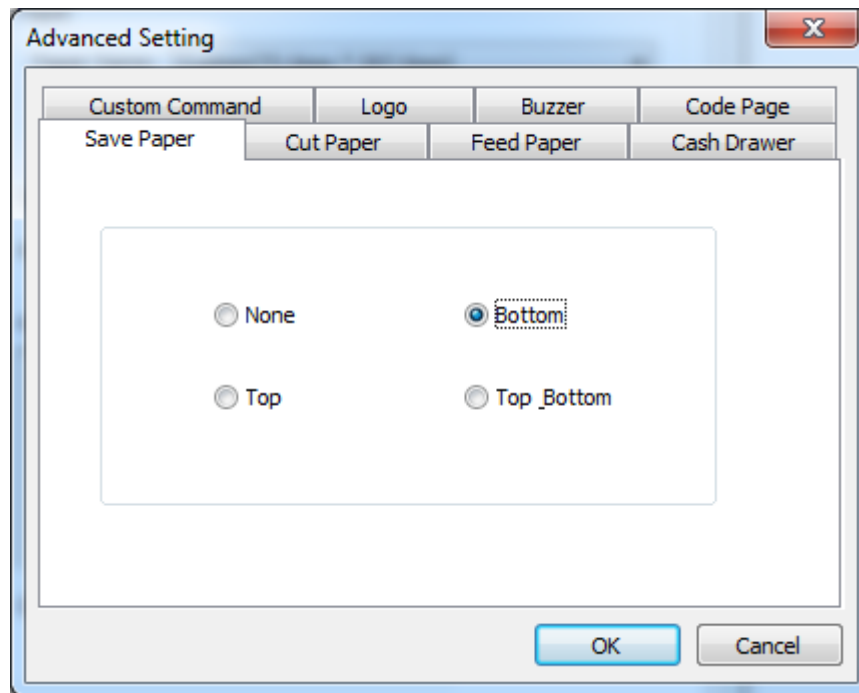


- Choose “Rotate” and “Effect”, you can preview on the left.



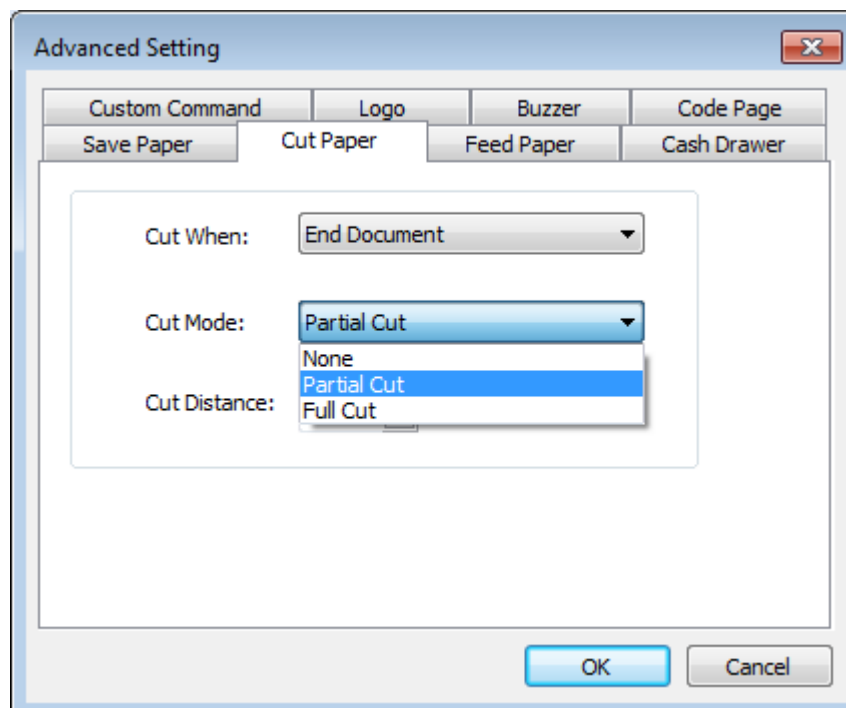
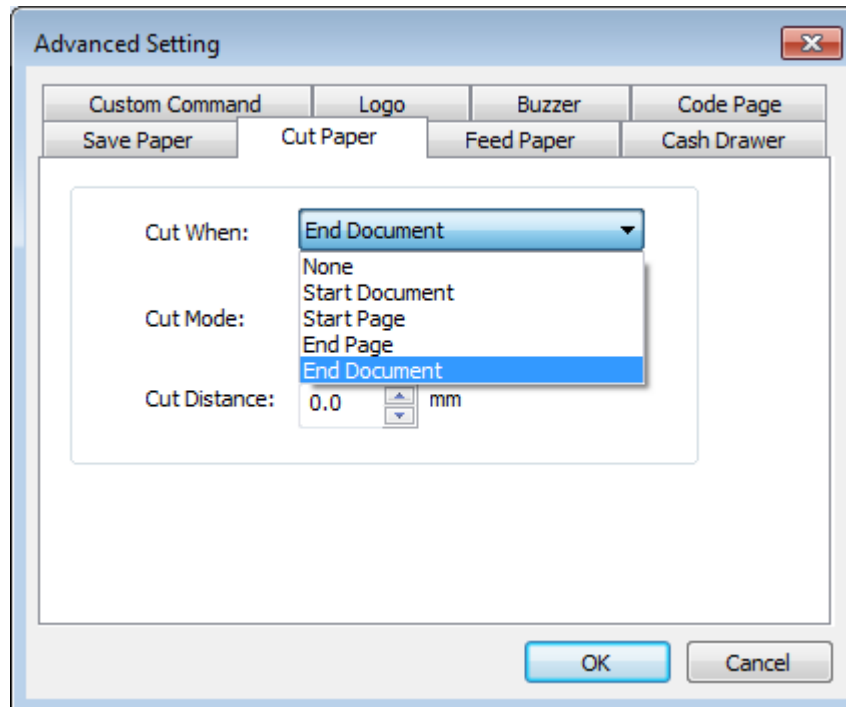
●Click on “Advanced” to set “Custom Command”, “Logo”, “Buzzer”, “Code Page”, “Save Paper”, “Cut Paper”, “Feed Paper”, “Cash Drawer”.

▪ Save paper

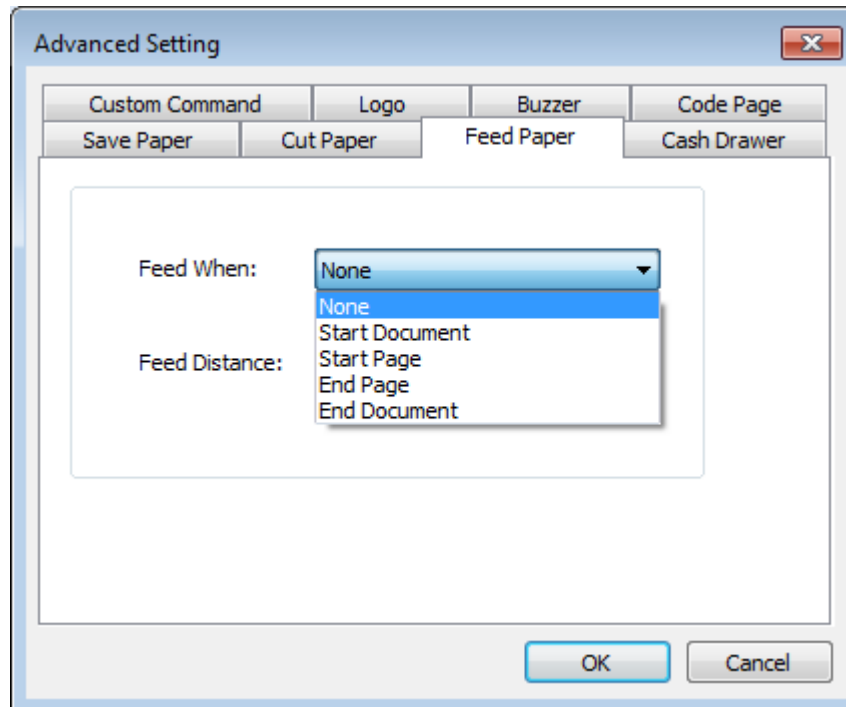




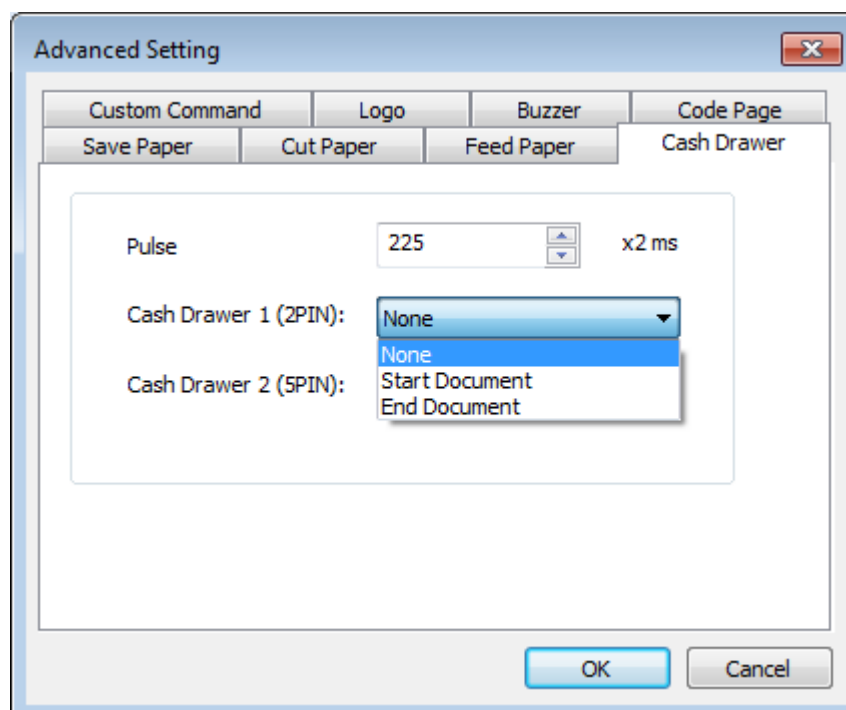
- Cut Paper

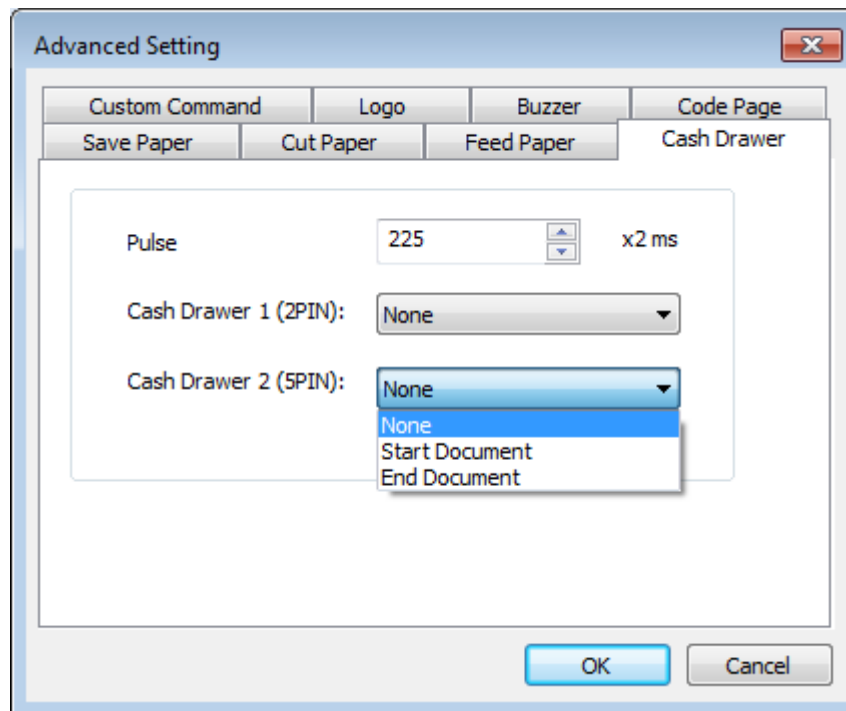


- Feed paper

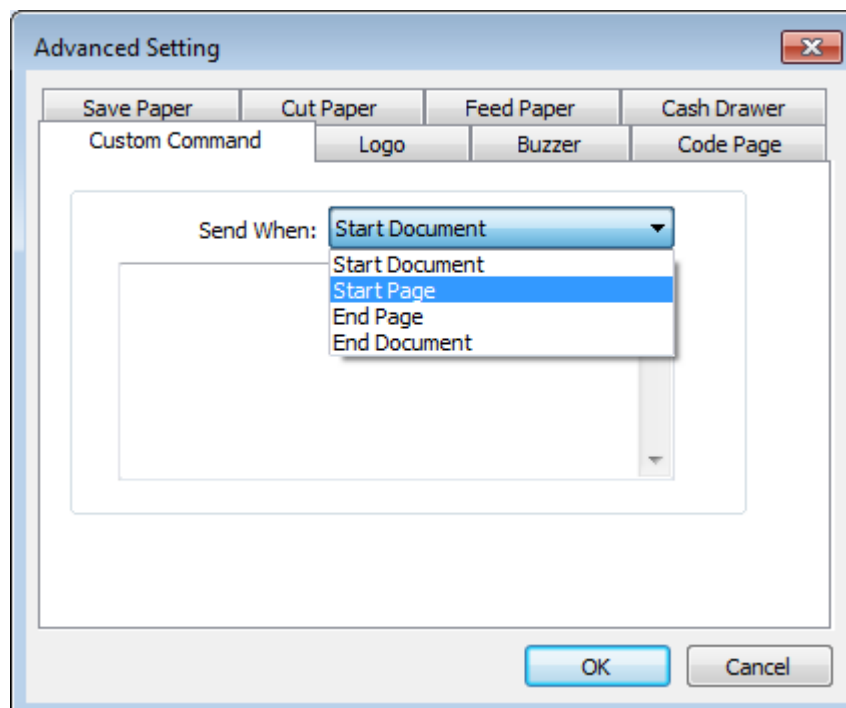


- Cash drawer

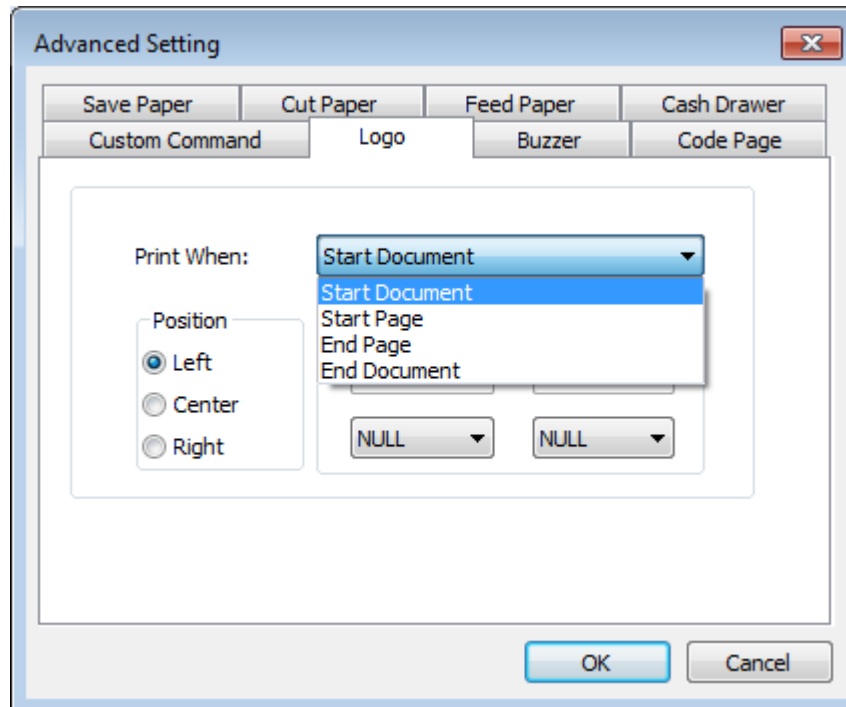




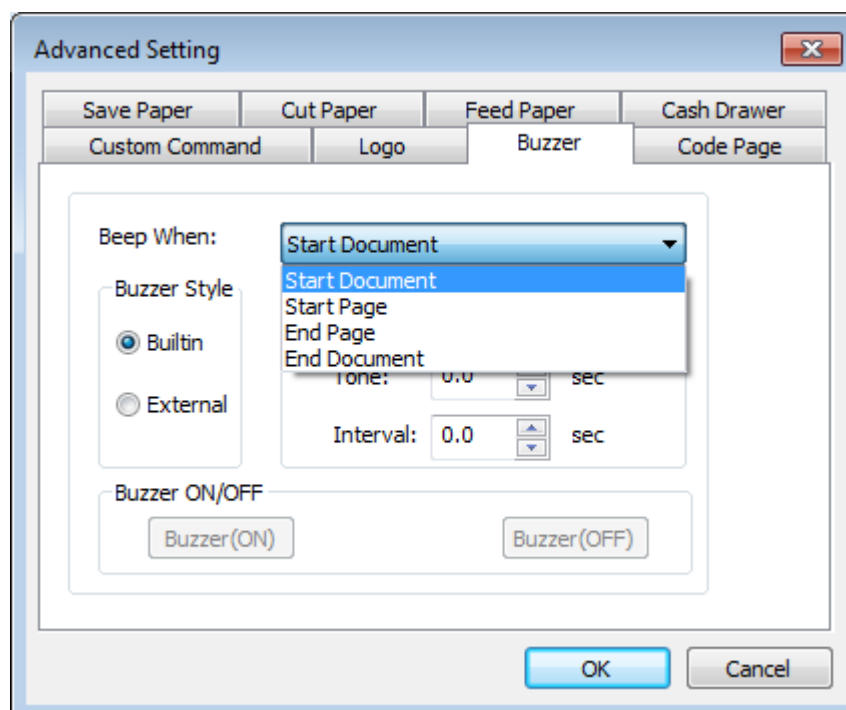
- Custom command



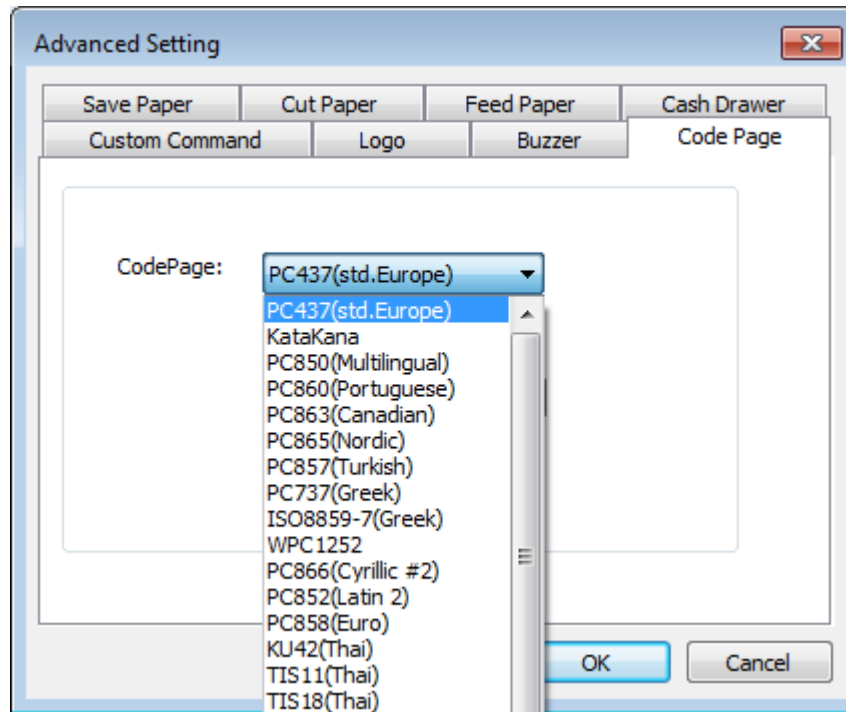
- Logo



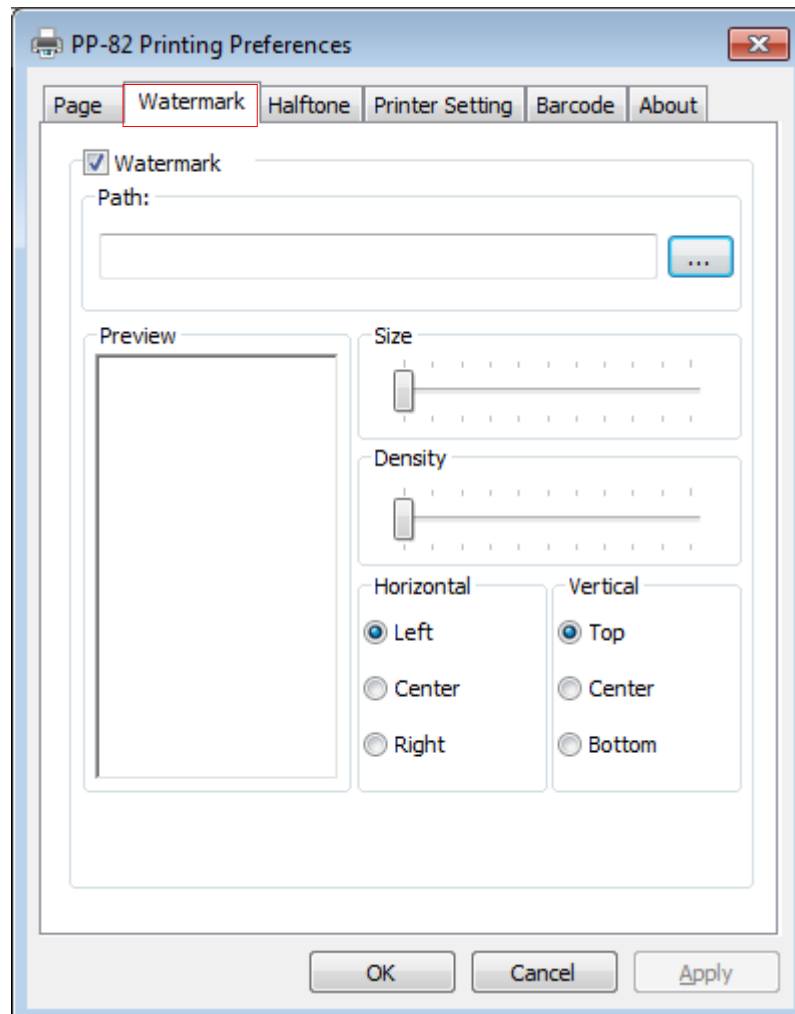
- Buzzer



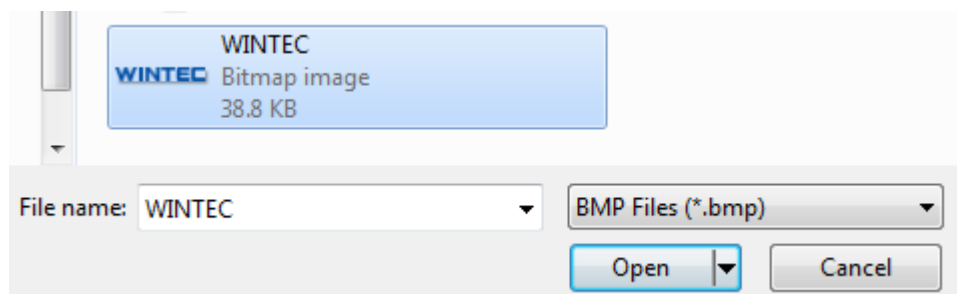
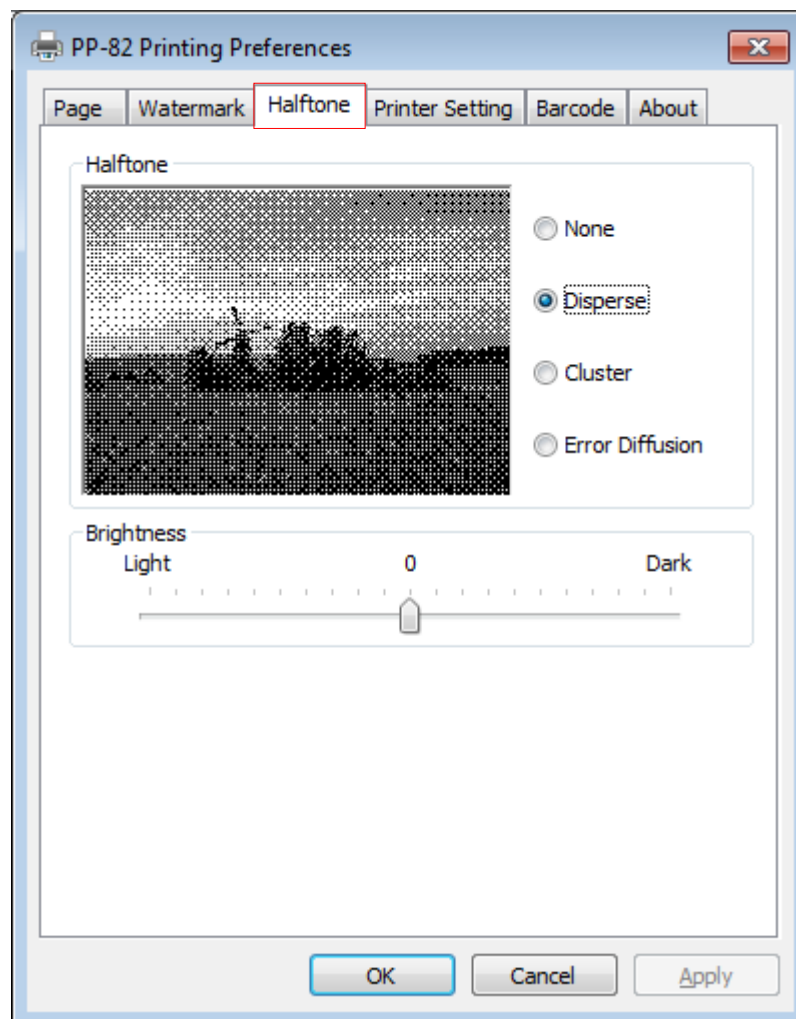
- Code Page



3) Click "Watermark". Set watermark to print (Only BMP file can be selected).

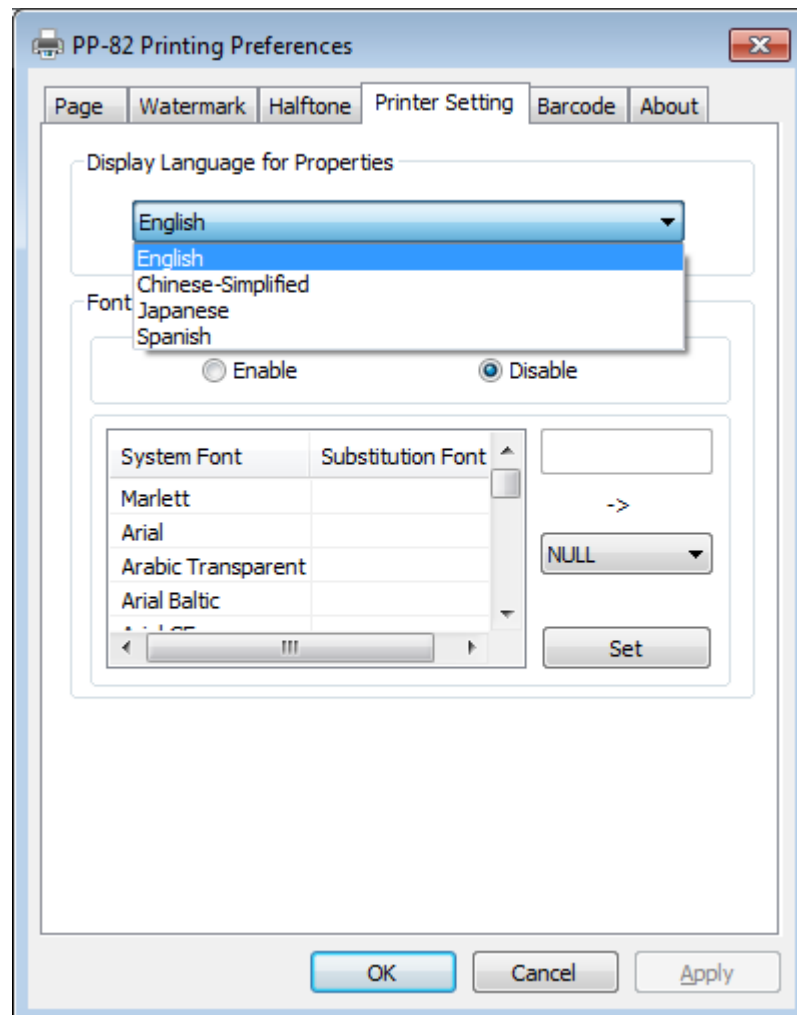


4) Click "Halftone" to set the halftone.

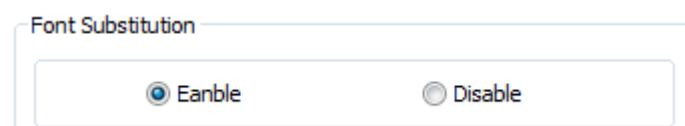


5) Click "Printer Setting" to set "Language for Properties Display" and "Font Substitution".

- Choose the "Display Language for Properties".

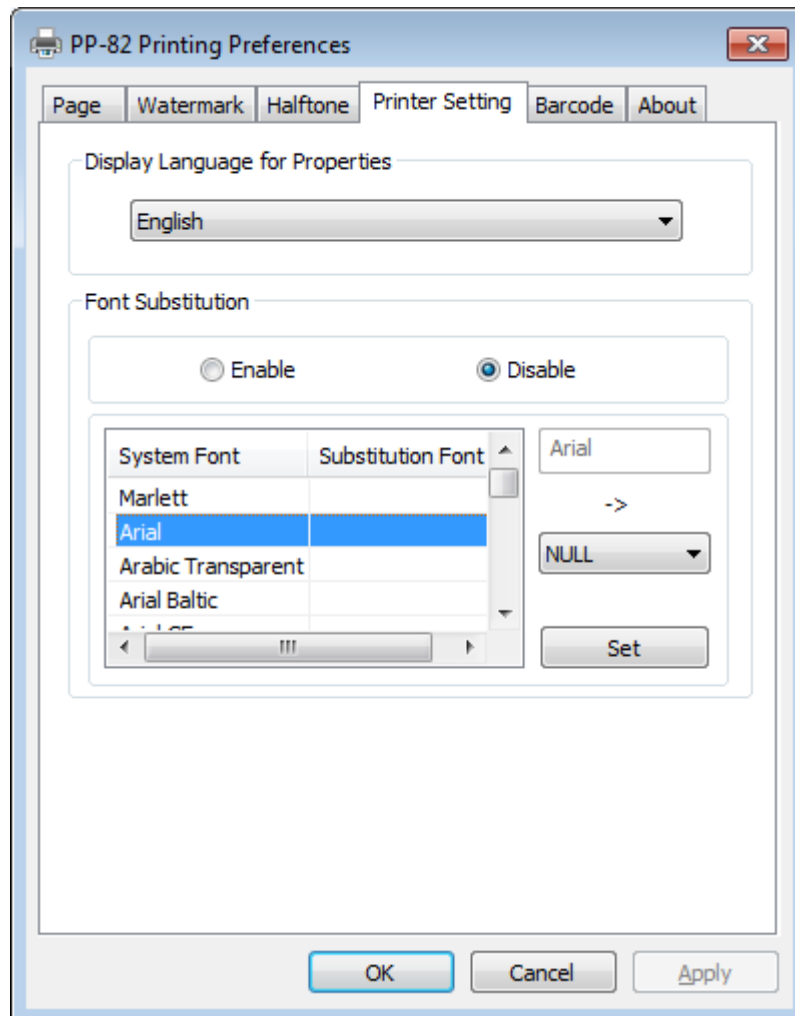


- Turn on the "Font Substitution".

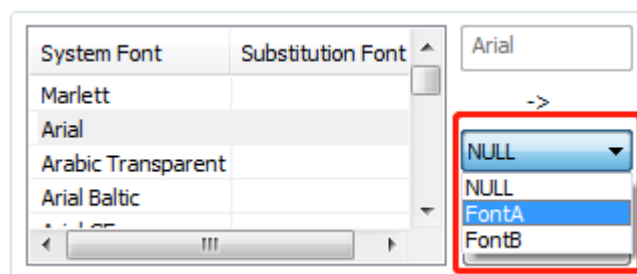




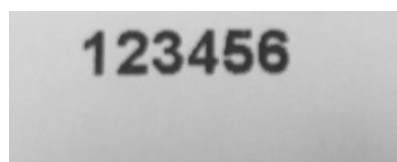
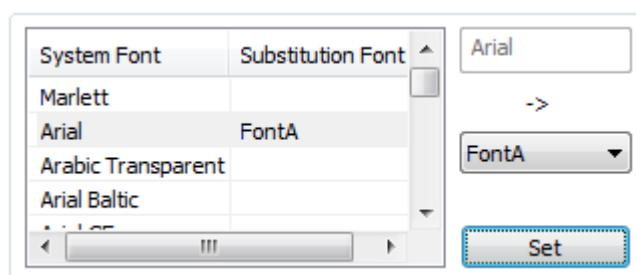
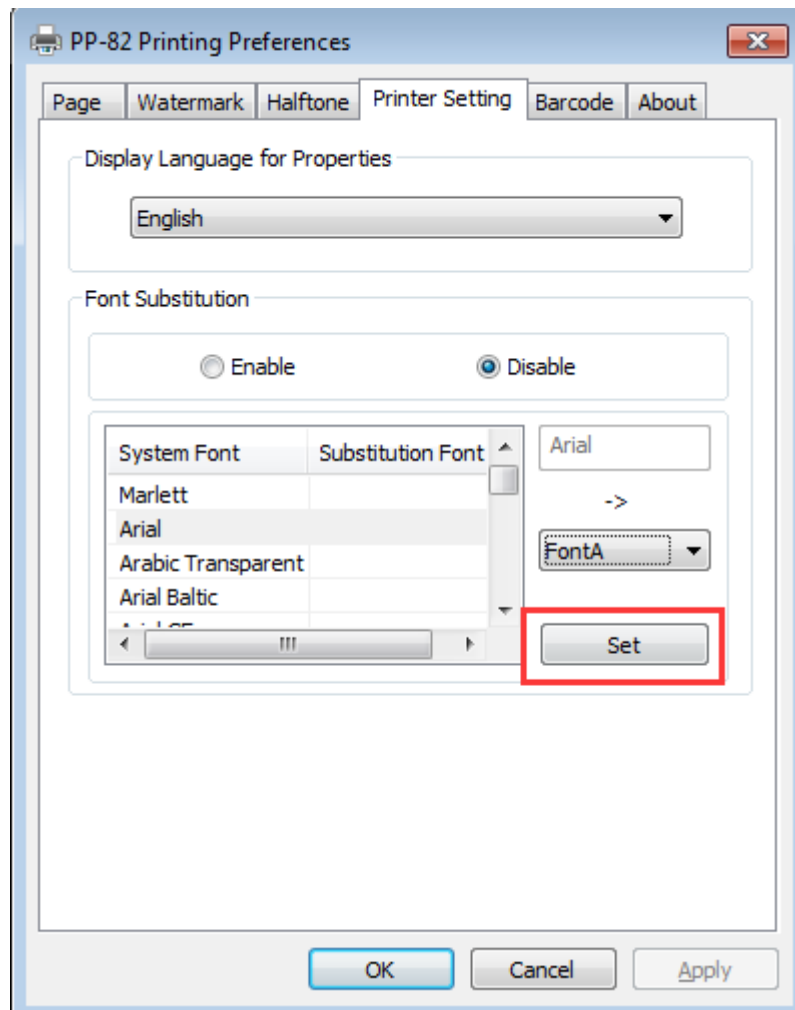
- Select the “System Font”, for example: Arial.



- Select the font to that you went to replace.



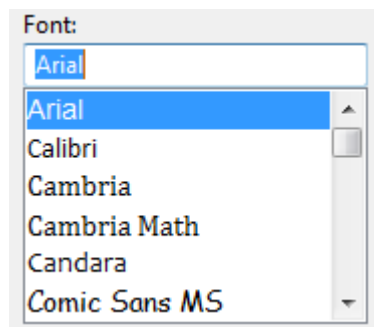
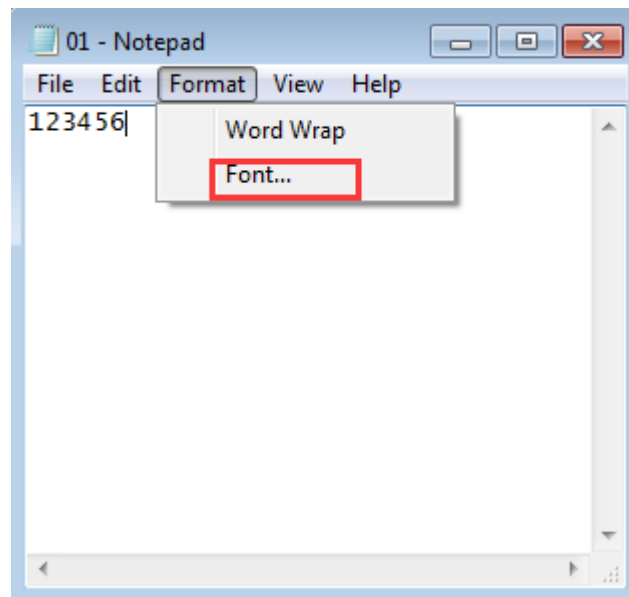
- Click "Setting".



## 6) Set up the "Barcode"

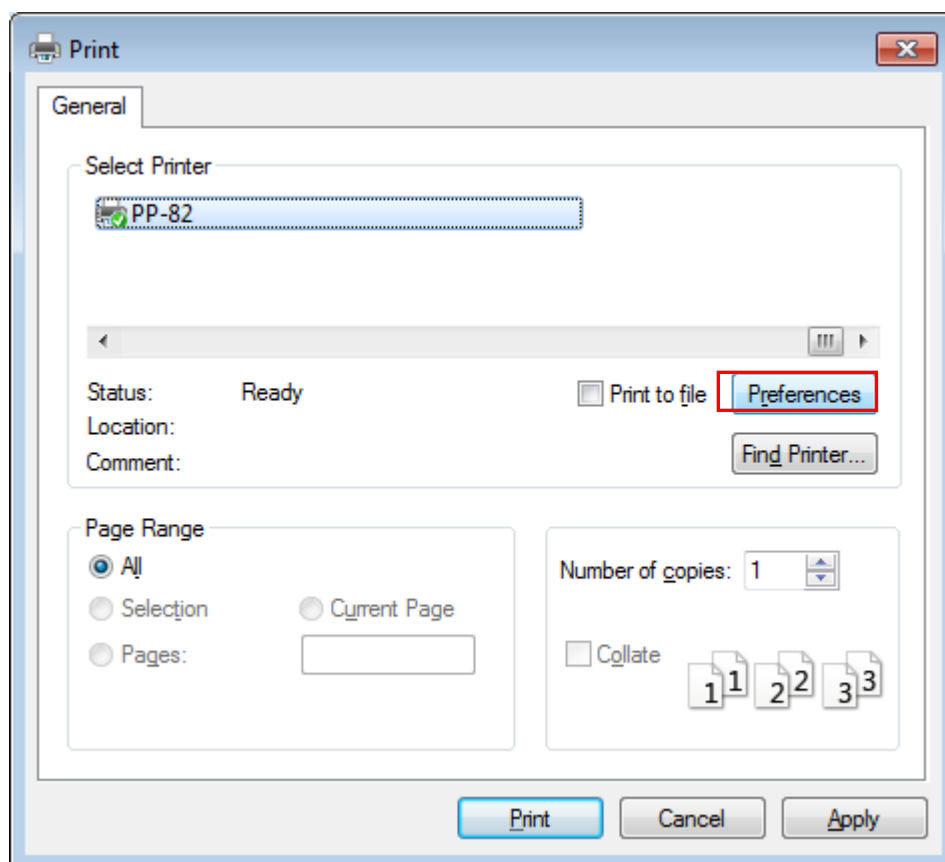
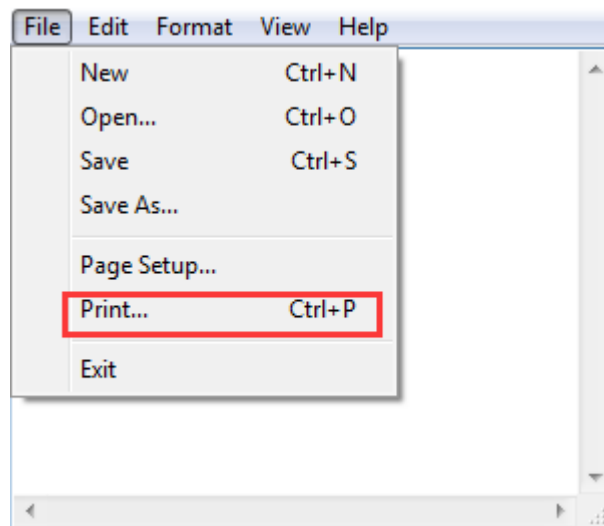
Assuming the font type of the main document is "Italics", if you want to convert the data "123456" to the barcode printing, the steps are as follows:

- Sets the data "123456" font type to a different font from the main document. Such as: Arial.

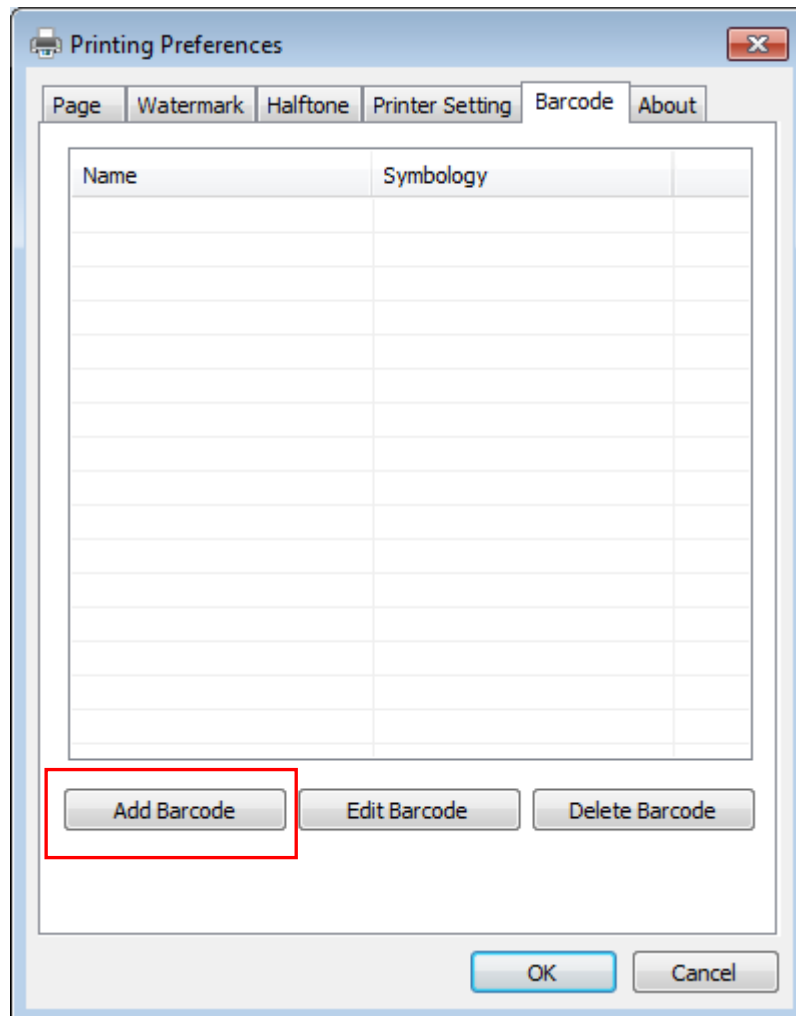


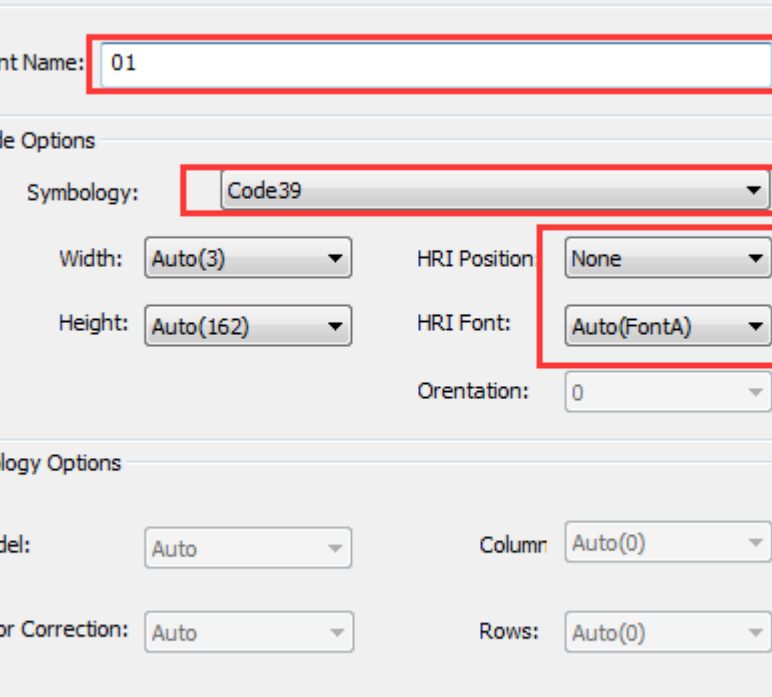
- Open the Preference.

If the document is open, you can set it in the document: file-print-preferences.



- Add Barcode firstly.

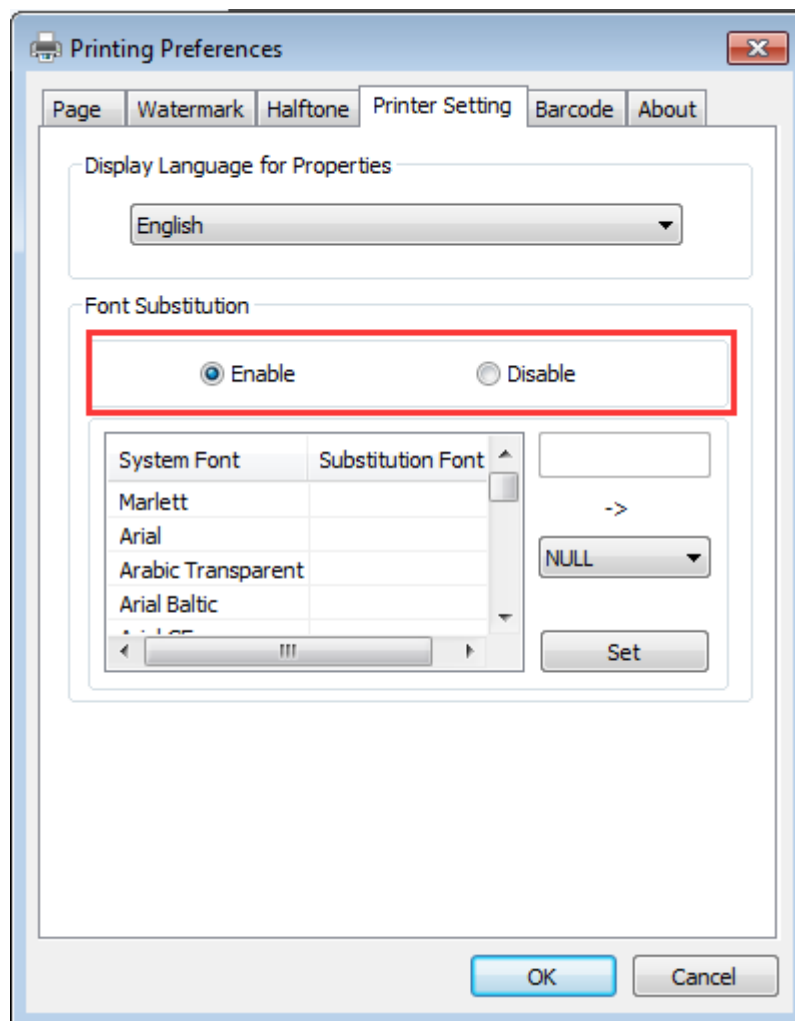


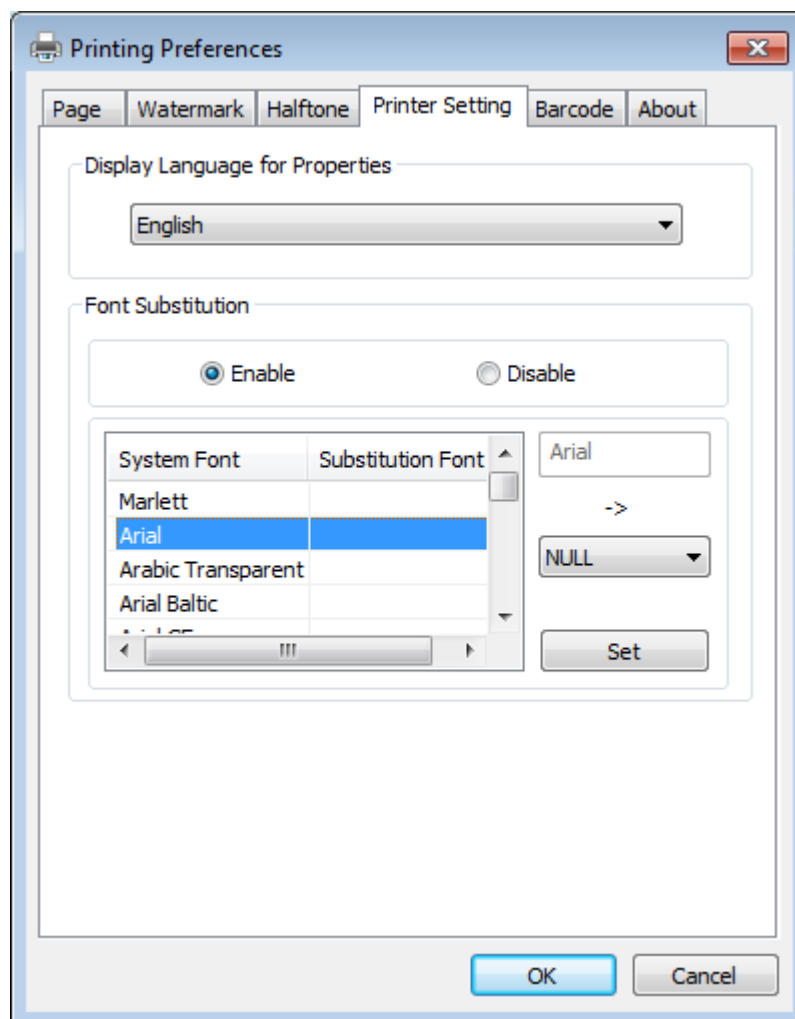
- 
- The image shows a 'Barcode Setting' dialog box with a blue title bar and a close button (X) in the top right corner. The dialog is divided into three sections: 'Font', 'Barcode Options', and 'Symbology Options'. In the 'Font' section, the 'Font Name' is set to '01'. In the 'Barcode Options' section, 'Symbology' is set to 'Code39', 'Width' is 'Auto(3)', 'Height' is 'Auto(162)', 'HRI Position' is 'None', 'HRI Font' is 'Auto(FontA)', and 'Orientation' is '0'. In the 'Symbology Options' section, 'Model' is 'Auto', 'Column' is 'Auto(0)', 'Error Correction' is 'Auto', and 'Rows' is 'Auto(0)'. At the bottom right are 'OK' and 'Cancel' buttons. Red rectangles highlight the 'Font Name' field, the 'Symbology' dropdown, and the 'HRI Position' and 'HRI Font' dropdowns.
- Barcode Setting**
- Font
- Font Name: 01
- Barcode Options
- Symbology: Code39
- Width: Auto(3) HRI Position: None
- Height: Auto(162) HRI Font: Auto(FontA)
- Orentation: 0
- Symbology Options
- Model: Auto Column: Auto(0)
- Error Correction: Auto Rows: Auto(0)
- OK Cancel

[illegible]

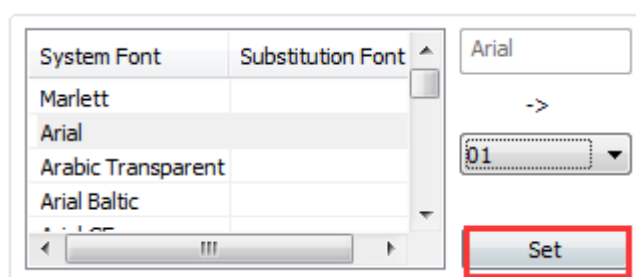
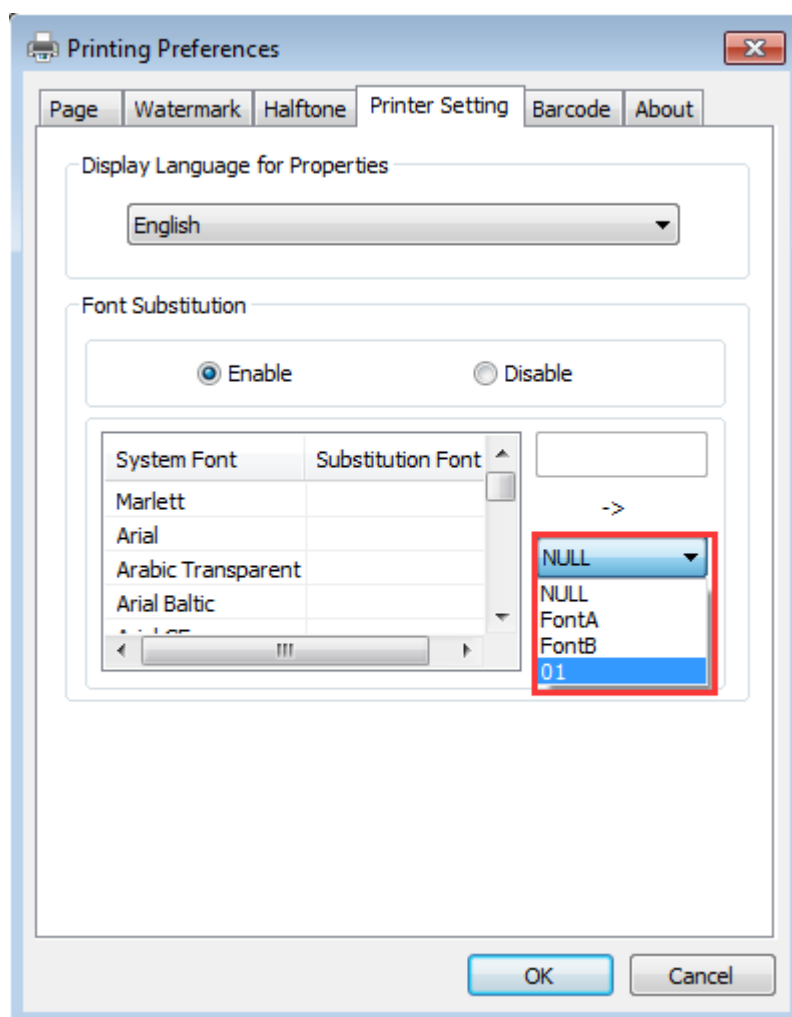
- Click the "Printer Setting".
- Turn on the "Font Substitution", select the system text need to be replaced (for example, Arial), and then select the font you want to replace (for example, 01) and click Settings, and the replacement font will display "01".

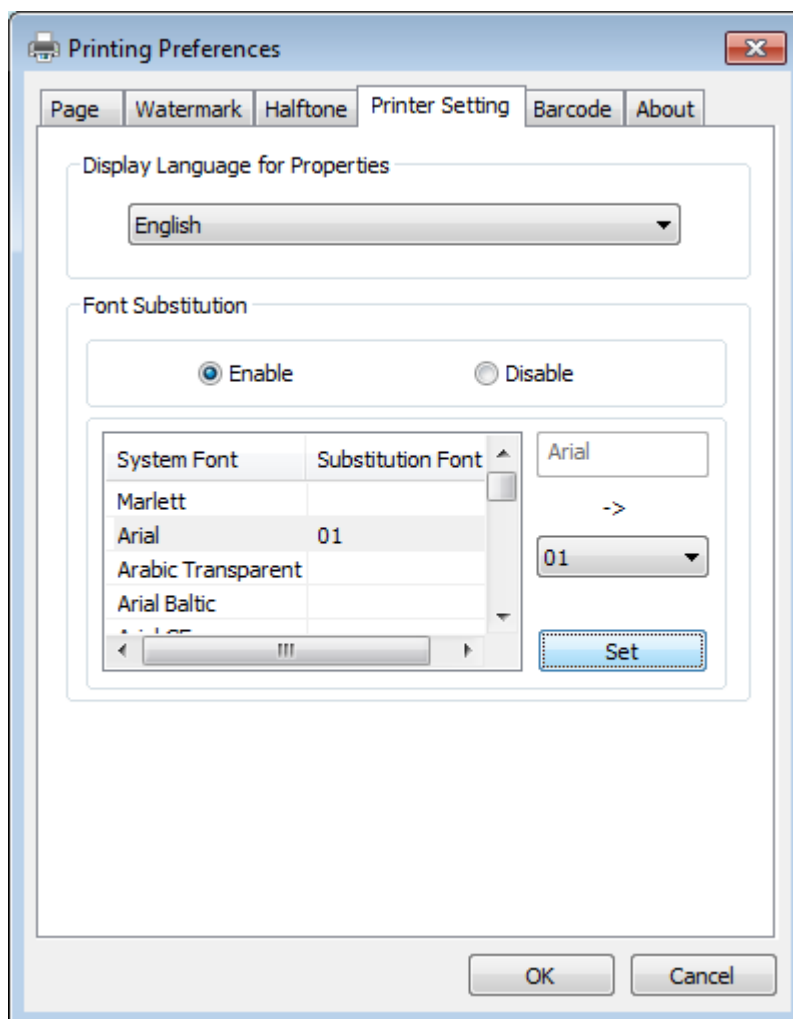
the steps are as follows:







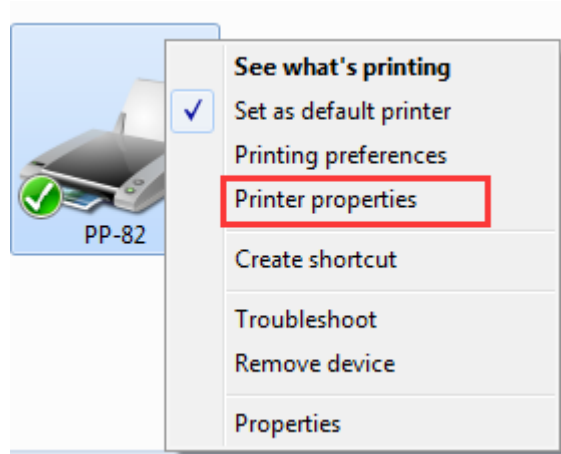




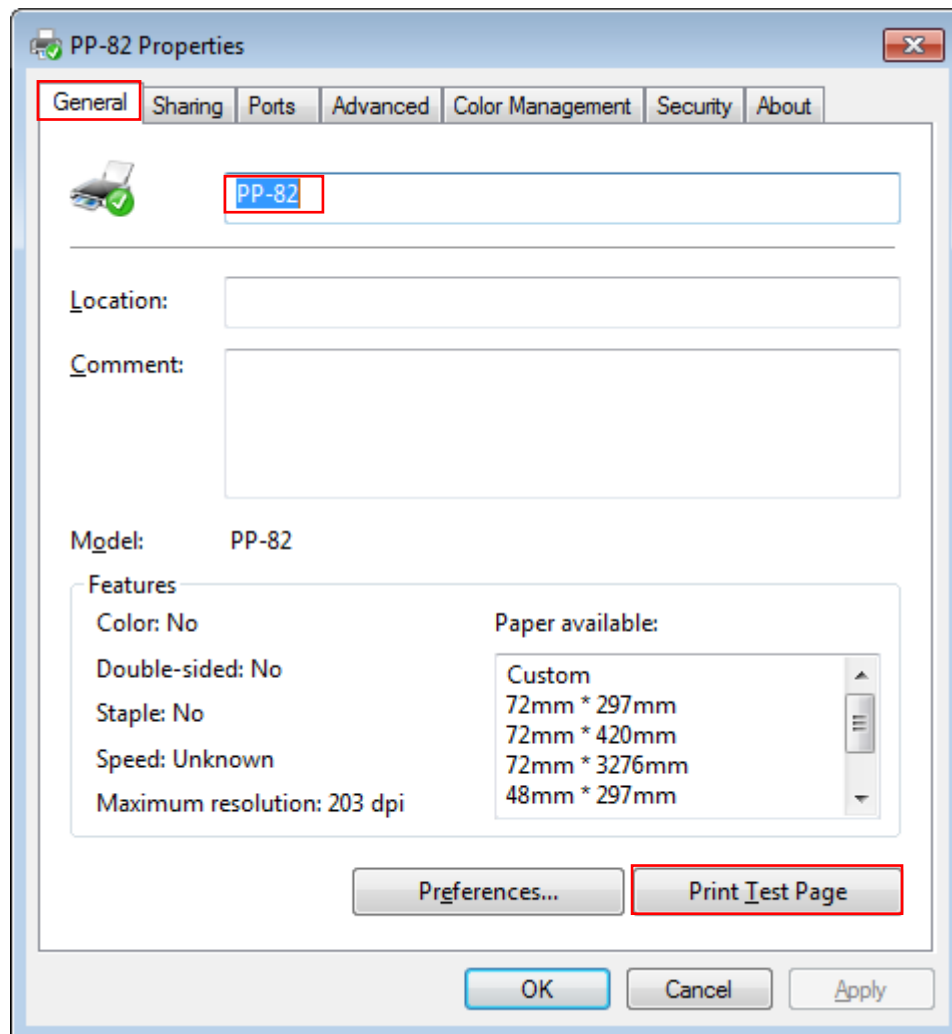
7) After all the setting, click "OK" to save it.

## 5.2 Other Settings

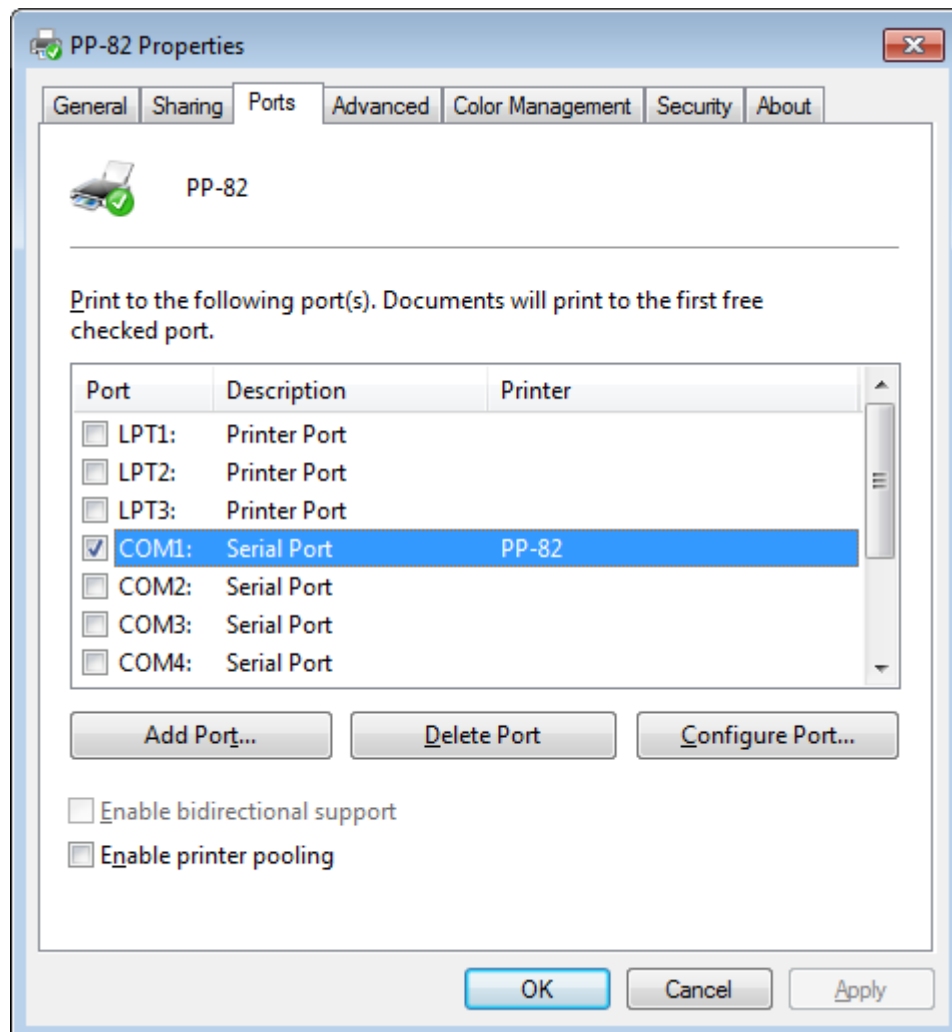
1) Click "Start" → "Devices and Printers". Right click "PP-82" and choose "Printer properties".



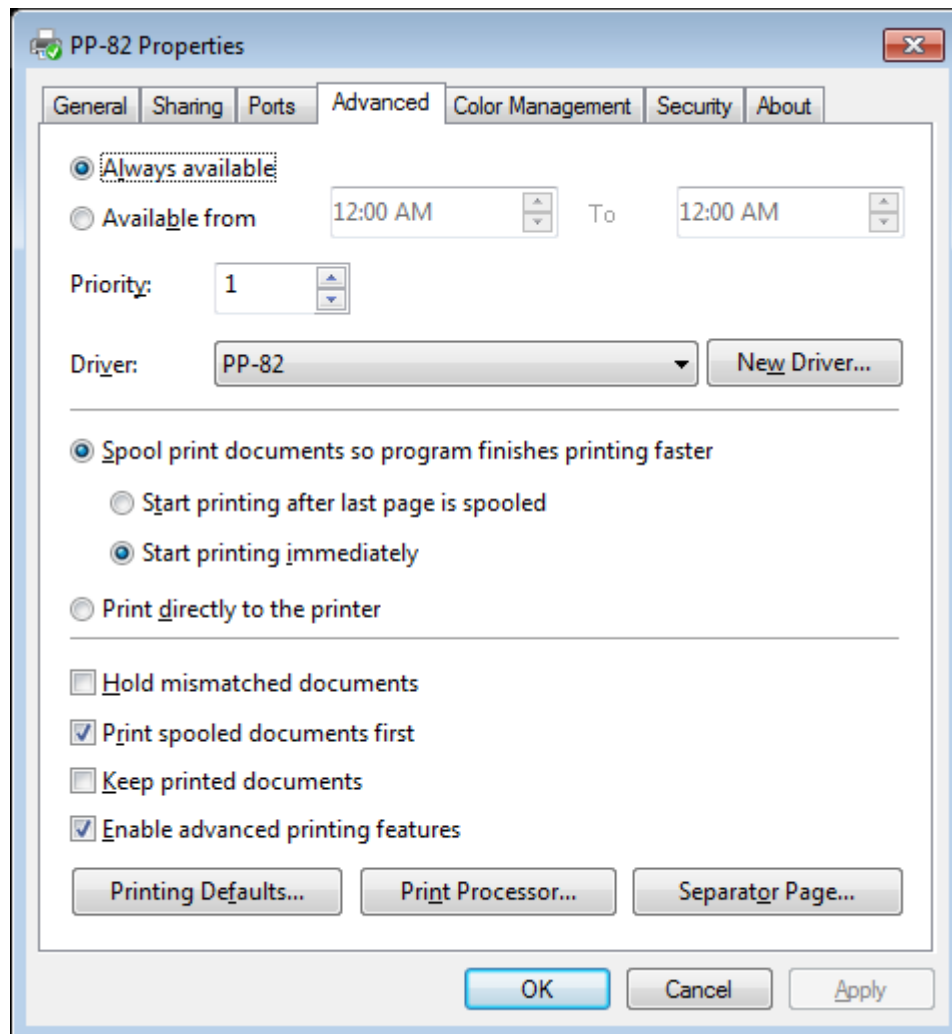
2) Choose "General", click on "Print Test Page", then it will print the current settings.



3) Click “Port” to change the other connecting port.

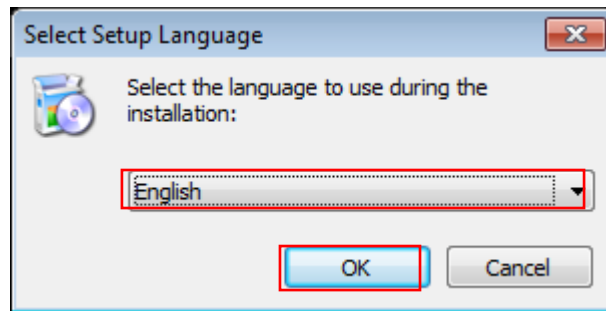


4) Click "Advanced" to set the available time for printer to use.

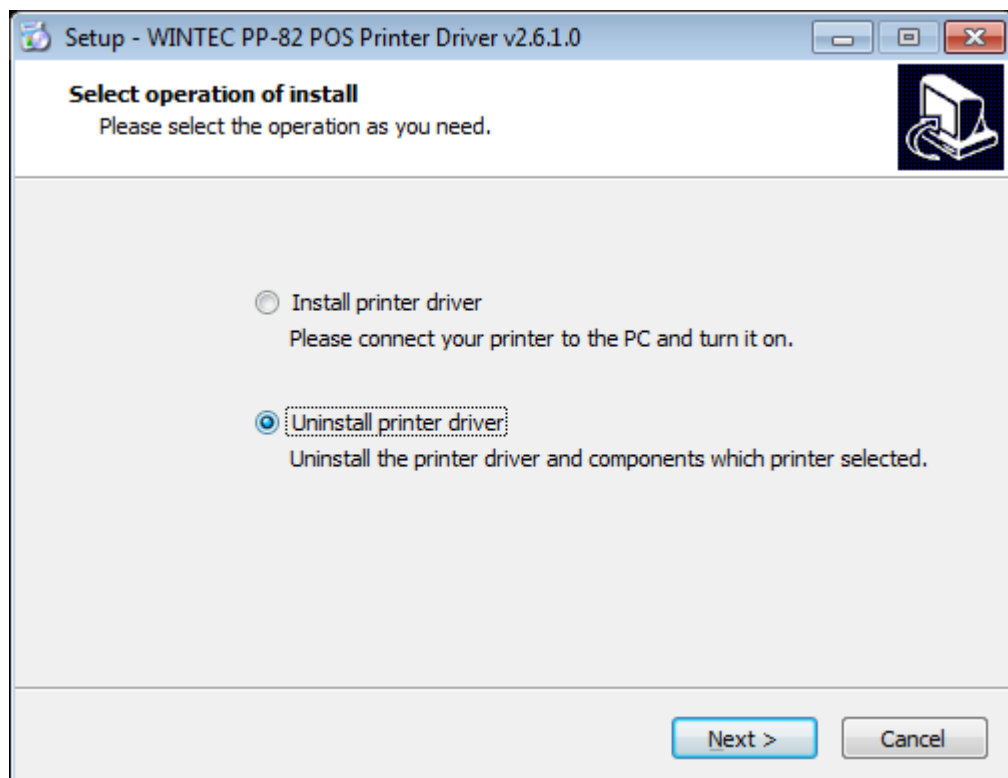


## 6.UNINSTALL WINDOWS DRIVER

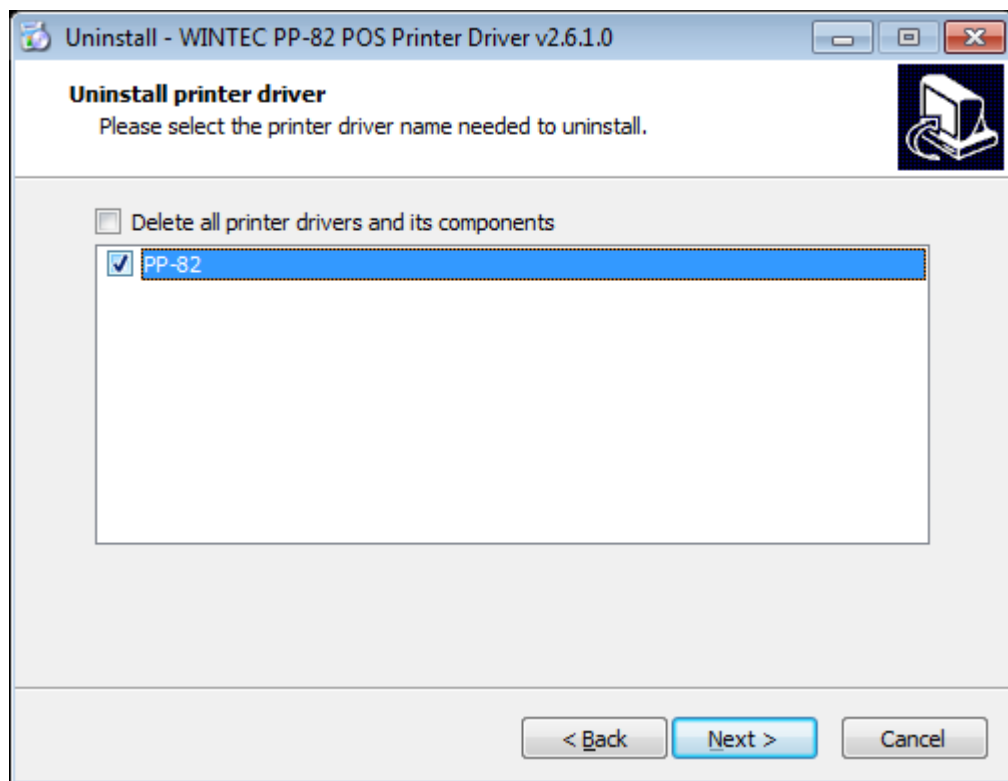
- 1) Double click Windows Driver.
- 2) Choose "English" and click "OK".



- 3) Choose "Uninstall printer driver", click "Next".



4) Choose "PP-82", click "Next".



5) Then it is complete to uninstall the printer driver.



## 7.SPECIFICATION

### **Resolution:**

POS Printer : 203×203dpi

### **Paper Size:**

Custom(72.0mm \* 297.0mm)