

Disable Windows 8 Driver Signature Enforcement

2013

Users need disable windows 8 driver signature enforcement before they install device drivers.

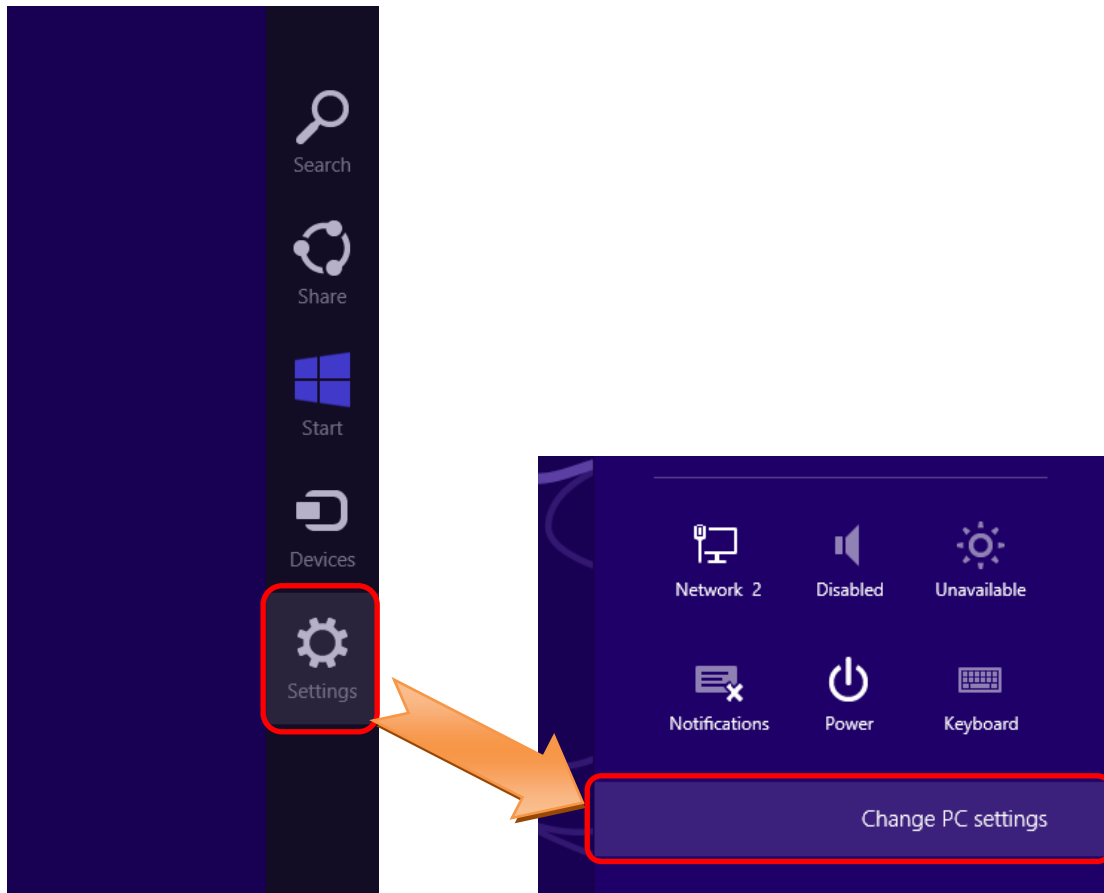
Ver.1.1

IMPORTANT:

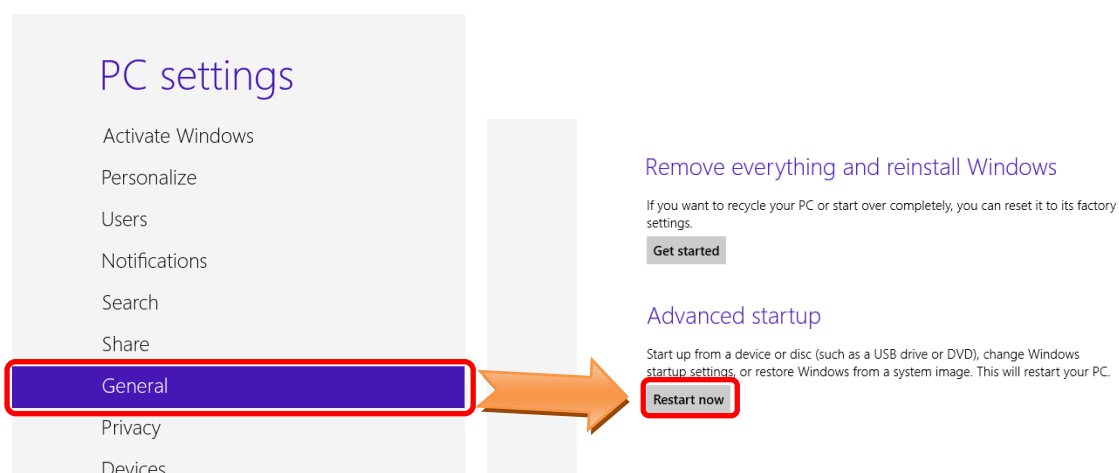
After the next time you restart your windows 8, driver signature enforcement feature will enable automatically. Please disable it again if you need install more drivers for others device.

Disable Windows 8 Driver Signature Enforcement

1. Click **Change PC settings** on the windows side bar. (Move mouse cursor to the lower right corner and click **Settings** on the windows side bar.)

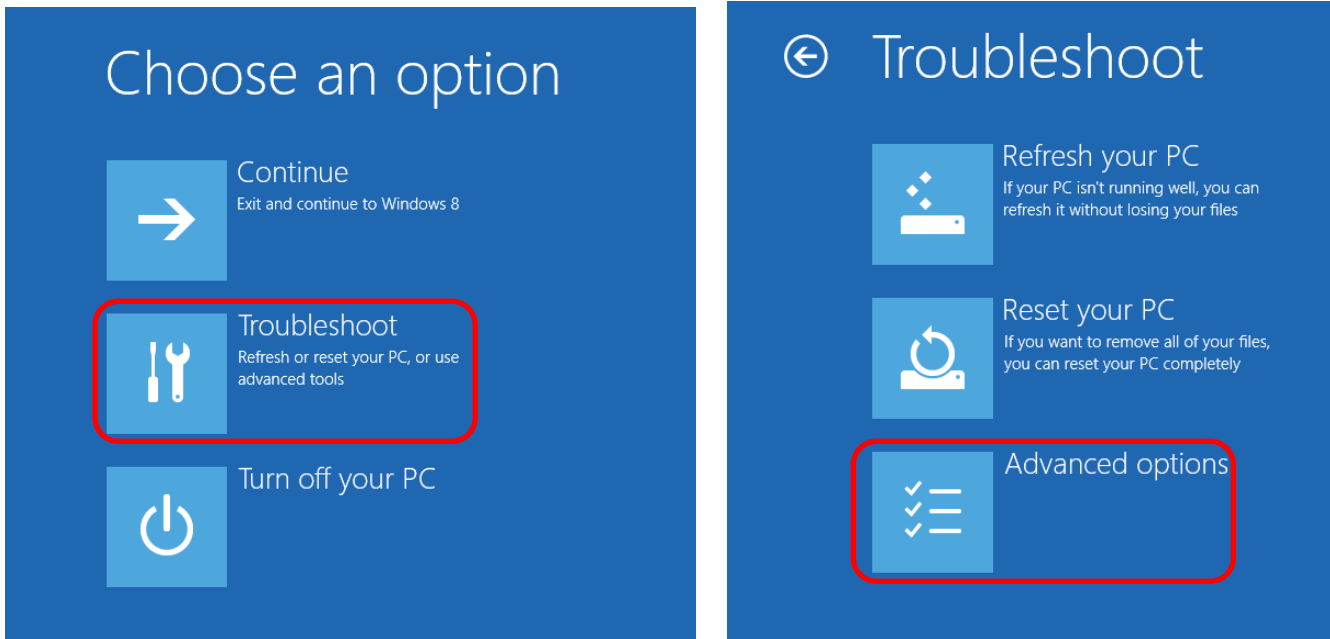


2. Select **General** in the PC settings then click **Restart now** button.

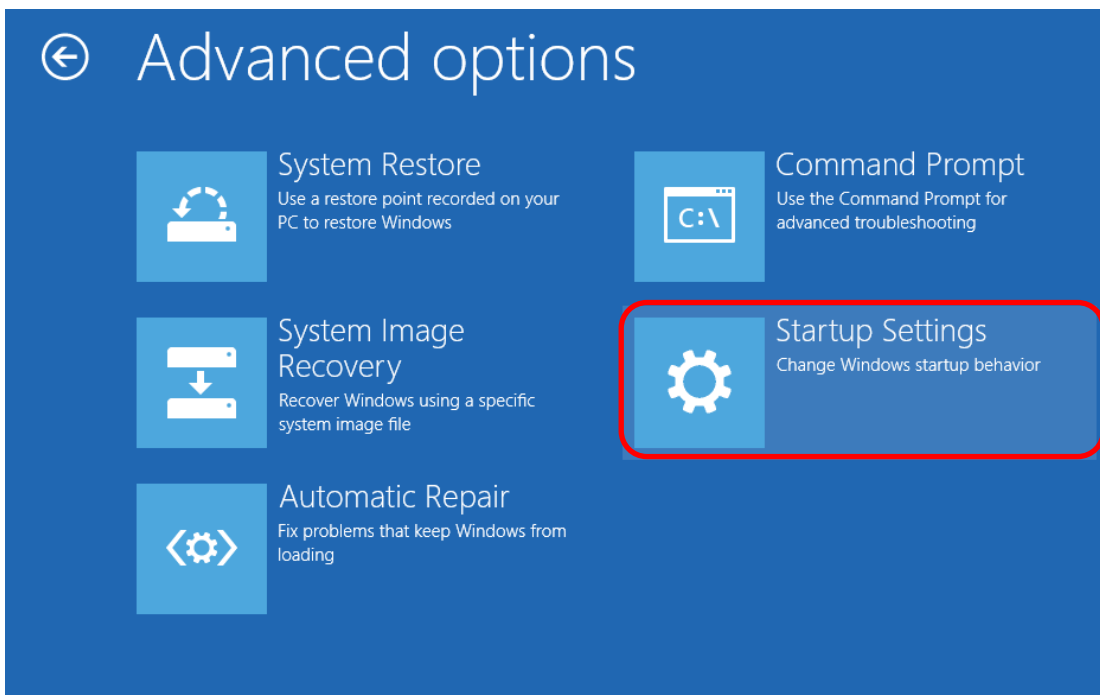


Disable Windows 8 Driver Signature Enforcement

3. Click **Troubleshoot** button then click **Advanced options**.

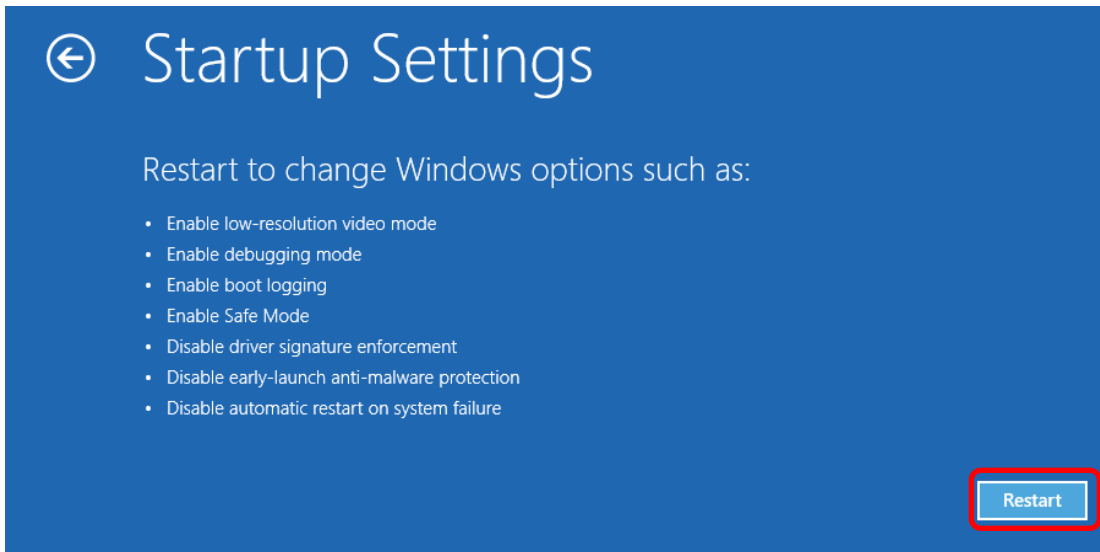


4. Click **Startup Settings** in the **Advanced options**.

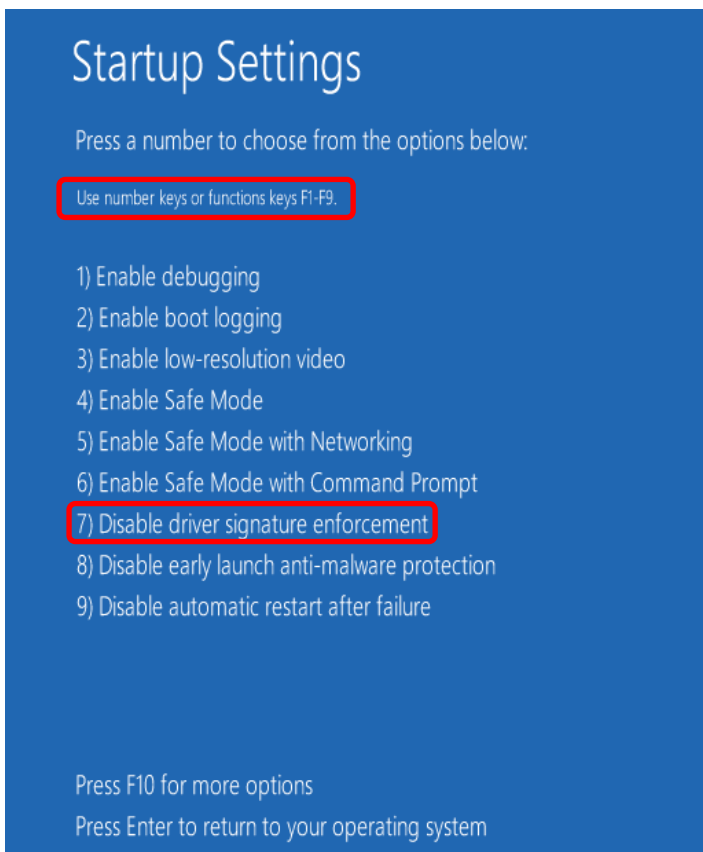


Disable Windows 8 Driver Signature Enforcement

5. Click **Restart** button in the **Startup Settings**.



6. Press **F7** button on your keyboard to disable driver signature enforcement.



7. Please install your device driver after OS reboot.